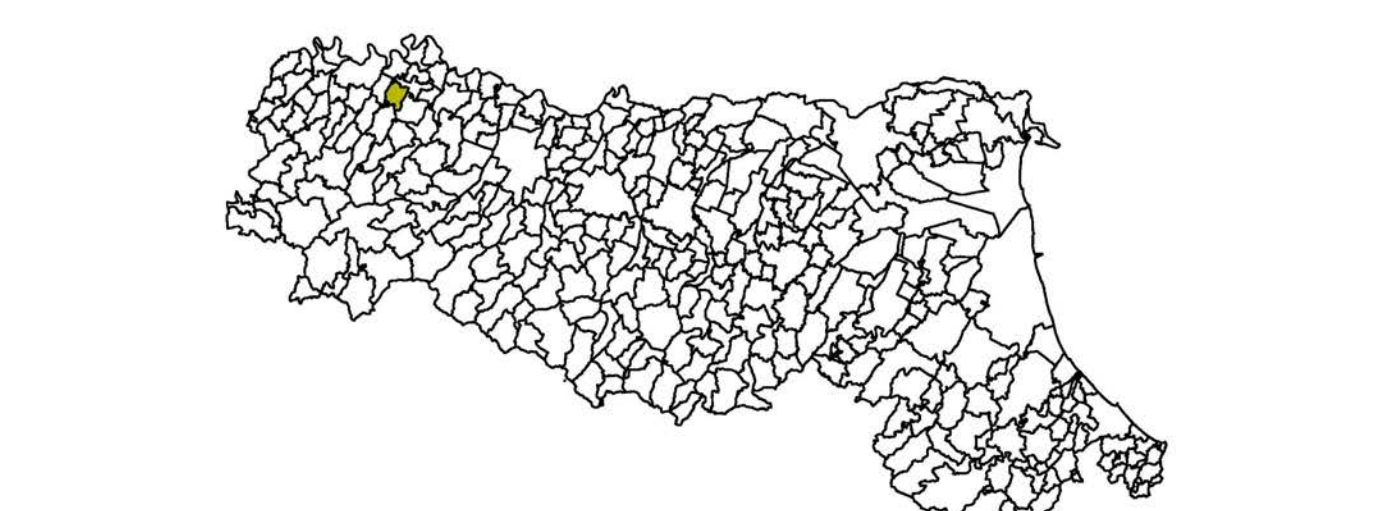


# MICROZONAZIONE SISMICA

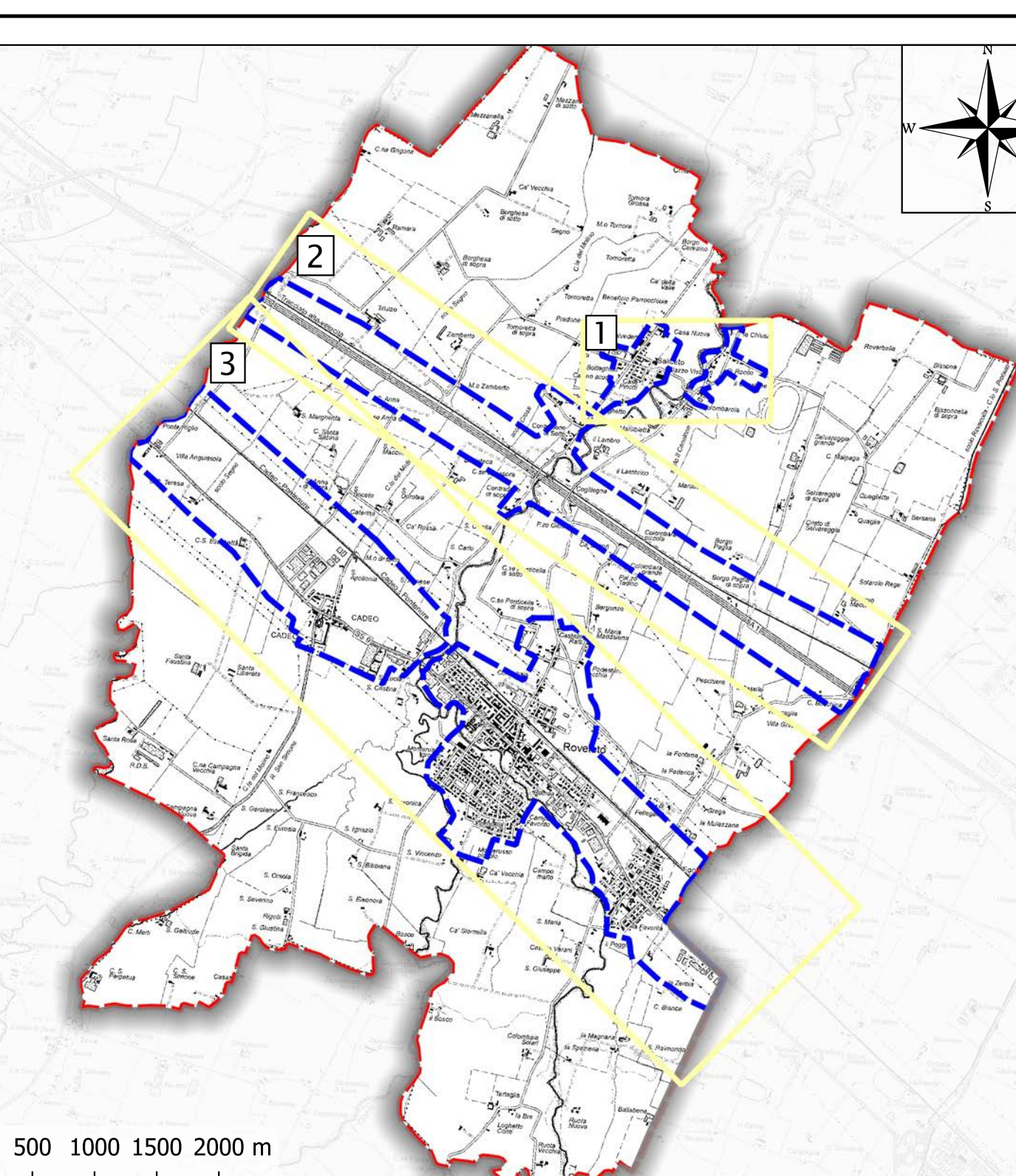
## Carta delle frequenze naturali dei terreni

scala 1:5.000



Regione Emilia-Romagna  
Comune di Cadeo



Regione Emilia-Romagna  
 Soggetto realizzatore: **EN GEO** s.r.l.  
 Direzione tecnica: Dott. Geol. Carlo Calzetti, Dott. Geol. Francesco Cerutti  
 Collaboratori: Dott. Geol. Matteo Baisi, Dott. Geol. Alessandro Ferrari, Dott.ssa Ing. Giulia Mainardi, Dott.ssa Geol. Alessandra Cantoni, Dott. Andrea Conti  
 Data: Ottobre 2019


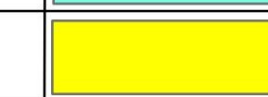






### Legenda

 Confine Comunale  
 Aree oggetto di microzonazione sismica

#### FREQUENZE NATURALI DEI TERRENI

Classi di frequenza (Hz)

Nessun picco significativo	
$f_0 \leq 0,6$ Hz	
$0,6$ Hz < $f_0 \leq 1$ Hz	
$1$ Hz < $f_0 \leq 2$ Hz	
$2$ Hz < $f_0 \leq 8$ Hz	
$f_0 > 8$ Hz	

#### FREQUENZA PRINCIPALE E RELATIVO VALORE (Hz)

 Ampiezza picco  $HSVR \geq 3$   
 Contrasto impedenza elevato  
 Ampiezza picco  $2 \leq HSVR < 3$   
 Contrasto impedenza moderato  
 Ampiezza picco  $1,5 \leq HSVR < 2$   
 Contrasto impedenza basso  
 Ampiezza picco  $HSVR < 1,5$   
 Assenza significativi contrasti impedenza  
 FREQUENZA SECONDARIA (QUANDO PRESENTE) E RELATIVO VALORE (Hz)

