

Attuazione dell'articolo 11 della legge 24 giugno 2009, n. 77

MICROZONAZIONE SISMICA

Verifiche liquefazione

Regione Emilia-Romagna

Comune di Castel San Giovanni



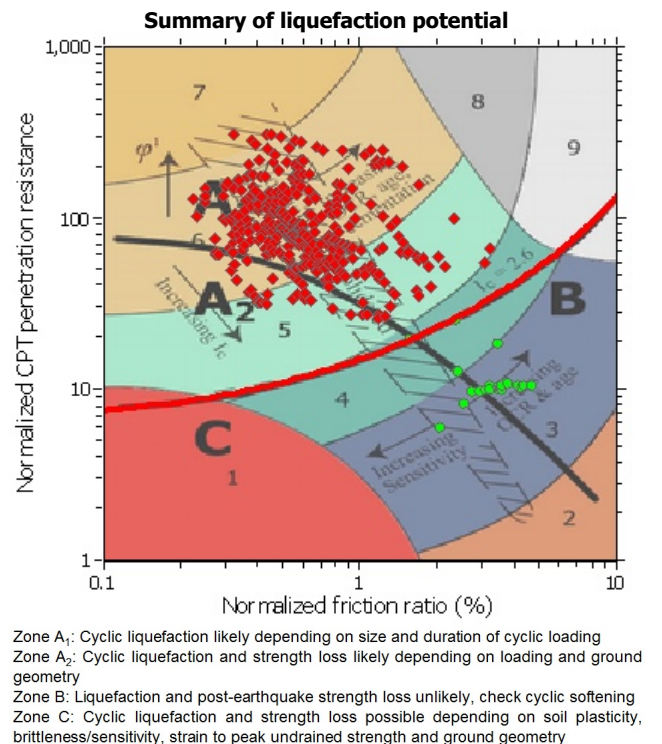
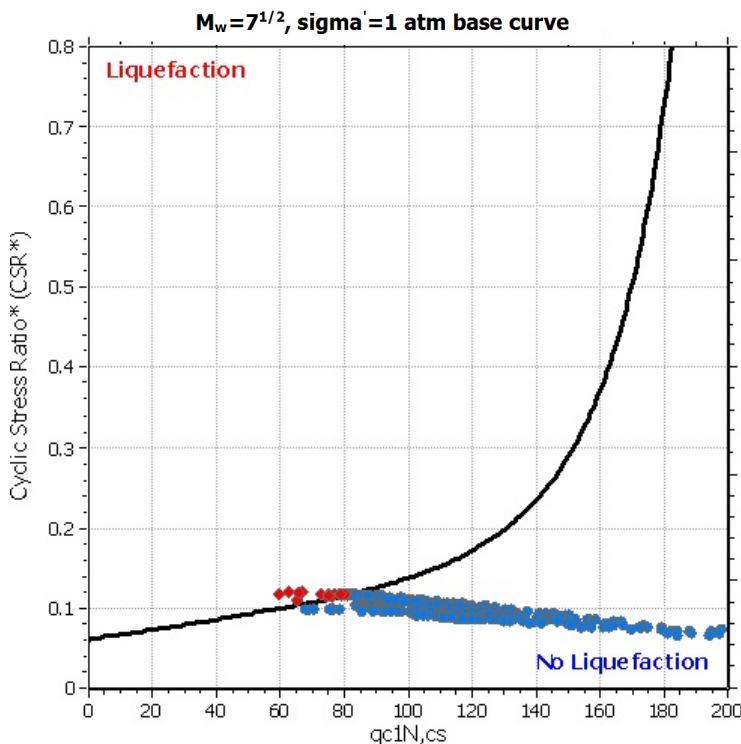
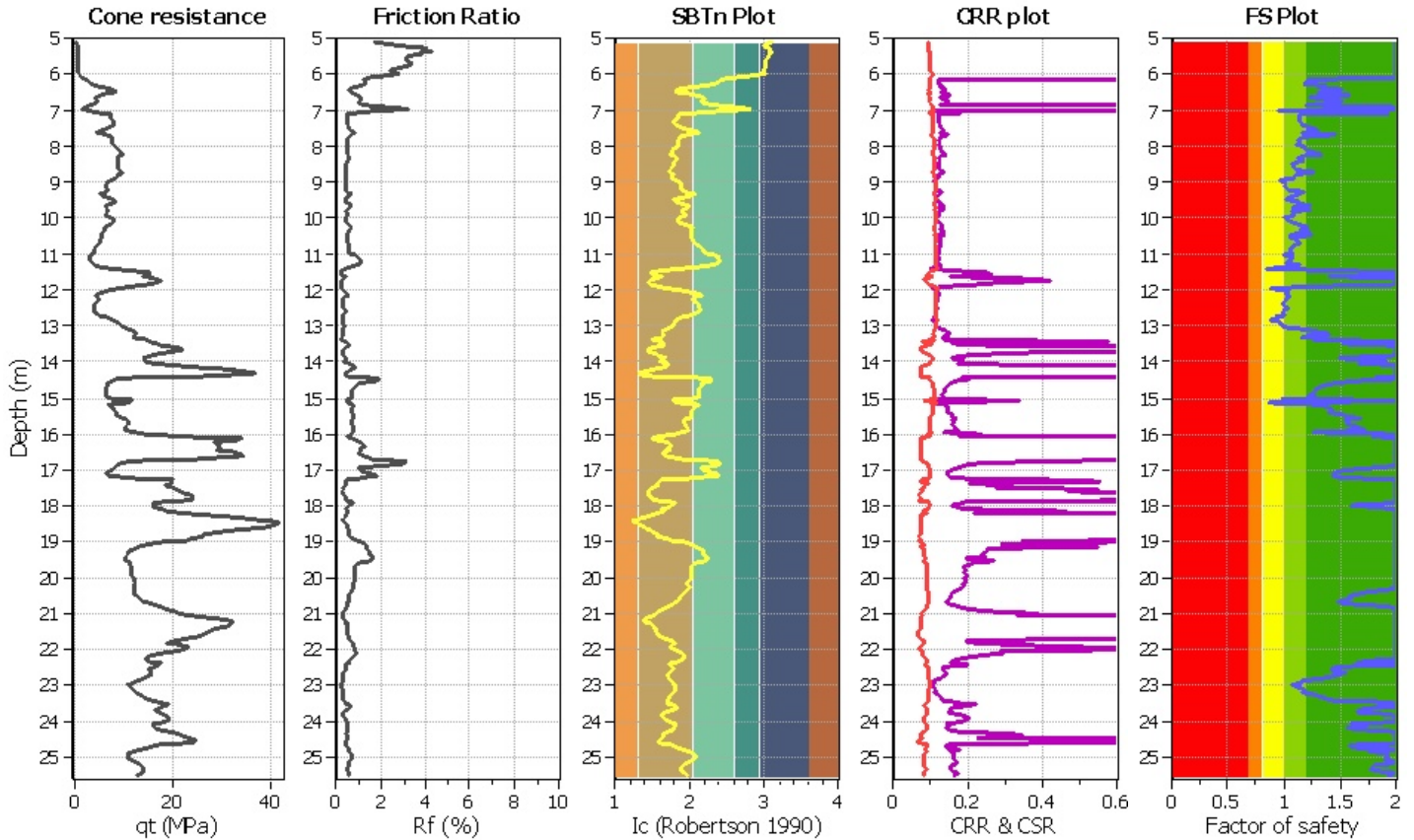
Regione REGIONE EMILIA-ROMAGNA	Soggetto realizzatore Dr.Geol. Gabriele Corbelli	Data Maggio 2018
		Allegato 2

LIQUEFACTION ANALYSIS REPORT

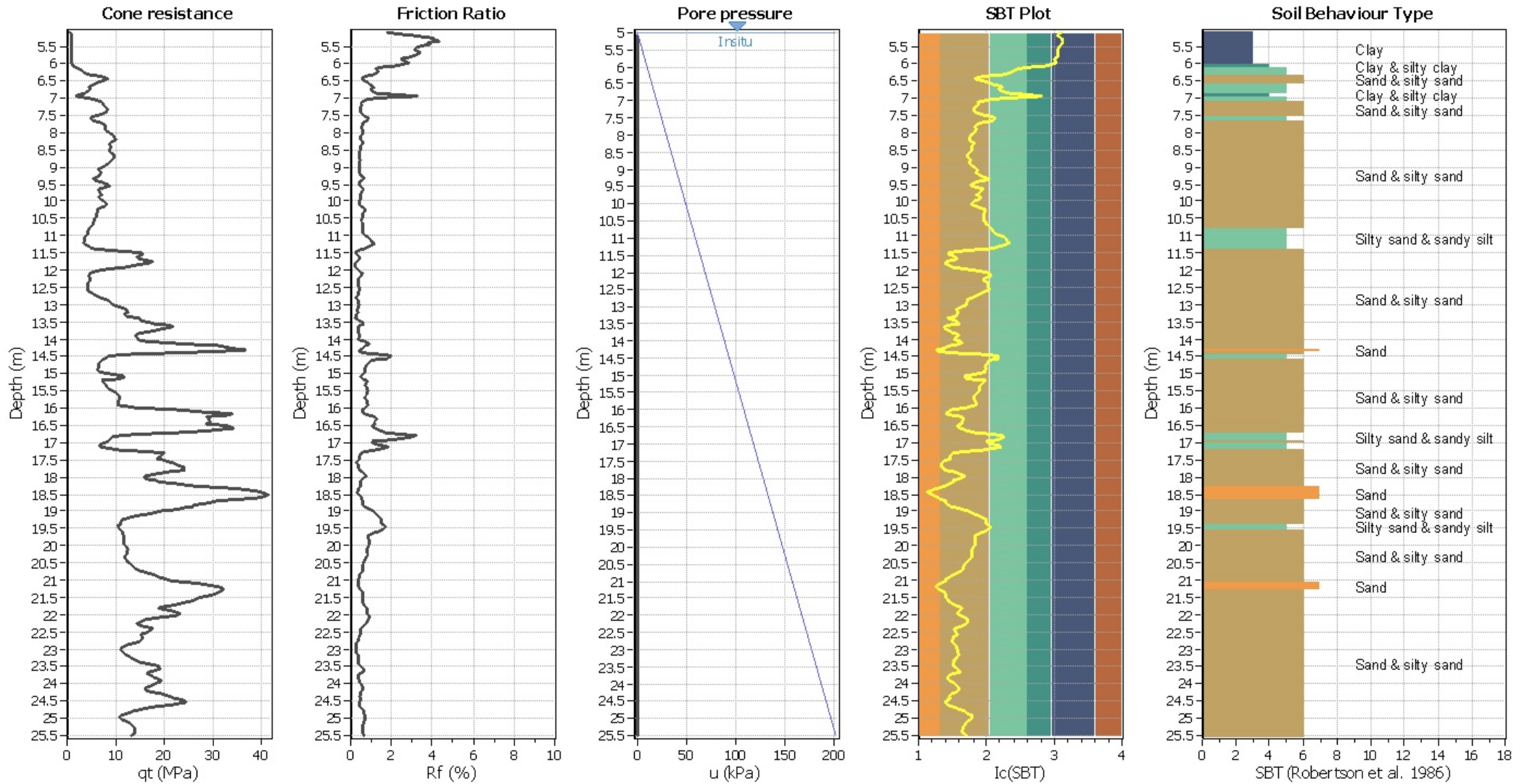
Project title : Microzonazione Sismica - Castel San Giovanni **Location :**
CPT file : 033013P420

Input parameters and analysis data

Analysis method:	B&I (2014)	G.W.T. (in-situ):	5.00 m	Use fill:	No	Clay like behavior applied:	Sands only
Fines correction method:	B&I (2014)	G.W.T. (earthq.):	5.00 m	Fill height:	N/A	Limit depth applied:	No
Points to test:	Based on Ic value	Average results interval:	3	Fill weight:	N/A	Limit depth:	N/A
Earthquake magnitude M_w :	5.68	Ic cut-off value:	2.60	Trans. detect. applied:	No	MSF method:	Method
Peak ground acceleration:	0.15	Unit weight calculation:	Based on SBT	K_G applied:	Yes		



CPT basic interpretation plo



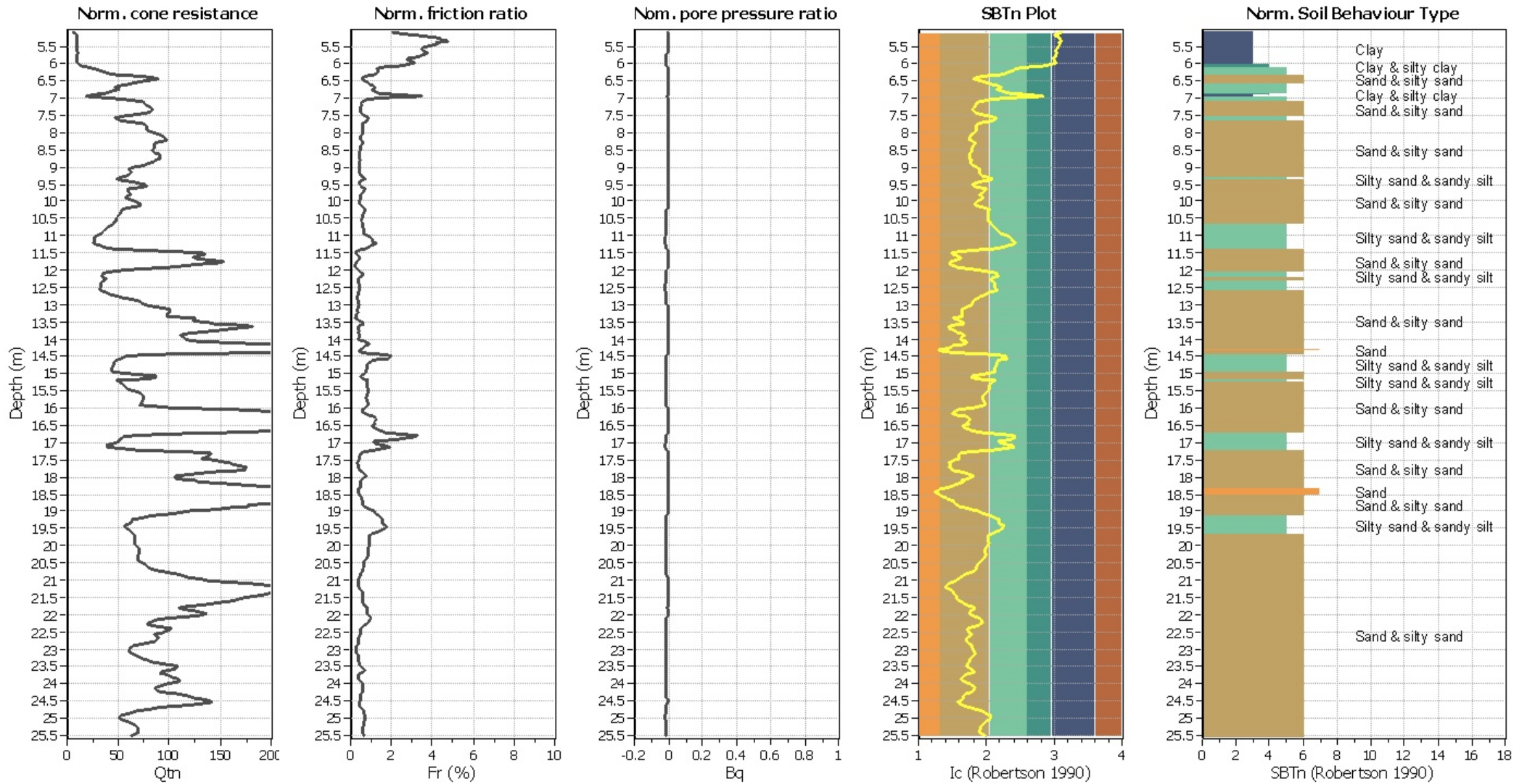
Input parameters and analysis data

Analysis method:	B&I (2014)	Depth to GWT (erthq.):	5.00 m	Fill weight:	N/A
Fines correction method:	B&I (2014)	Average results interval:	3	Transition detect. applied:	No
Points to test:	Based on Ic value	Ic cut-off value:	2.60	K _g applied:	Yes
Earthquake magnitude M _w :	5.68	Unit weight calculation:	Based on SBT	Clay like behavior applied:	Sands only
Peak ground acceleration:	0.15	Use fill:	No	Limit depth applied:	No
Depth to water table (insitu):	5.00 m	Fill height:	N/A	Limit depth:	N/A

SBT legend

1. Sensitive fine grained	4. Clayey silt to silty	7. Gravely sand to sand
2. Organic material	5. Silty sand to sandy silt	8. Very stiff sand to
3. Clay to silty clay	6. Clean sand to silty sand	9. Very stiff fine grained

CPT basic interpretation plots (normaliz)



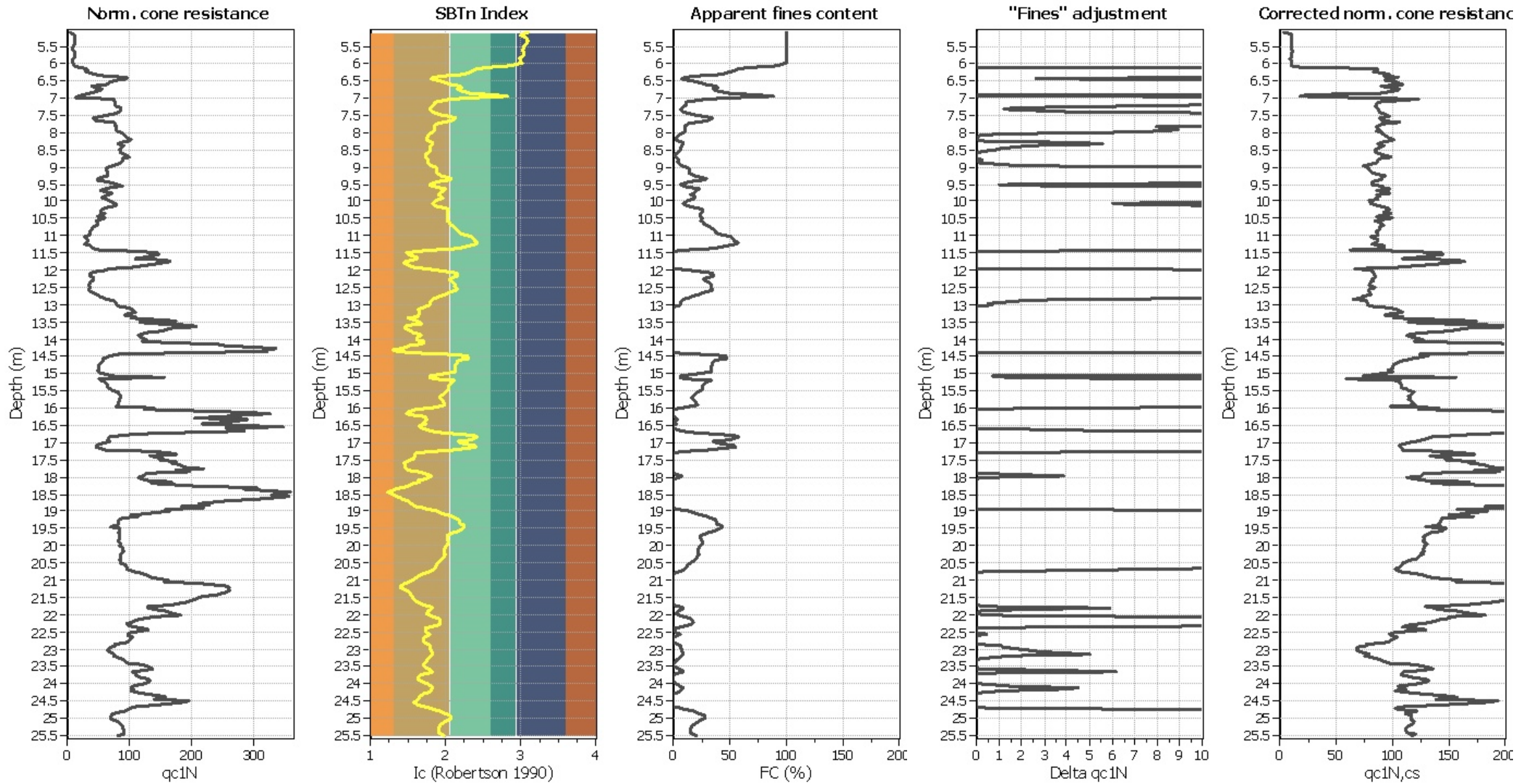
Input parameters and analysis data

Analysis method:	B&I (2014)	Depth to GWT (erthq.):	5.00 m	Fill weight:	N/A
Fines correction method:	B&I (2014)	Average results interval:	3	Transition detect. applied:	No
Points to test:	Based on Ic value	Ic cut-off value:	2.60	K _g applied:	Yes
Earthquake magnitude M _w :	5.68	Unit weight calculation:	Based on SBT	Clay like behavior applied:	Sands only
Peak ground acceleration:	0.15	Use fill:	No	Limit depth applied:	No
Depth to water table (insitu):	5.00 m	Fill height:	N/A	Limit depth:	N/A

SBTn legend

1. Sensitive fine grained	4. Clayey silt to silty	7. Gravely sand to sand
2. Organic material	5. Silty sand to sandy silt	8. Very stiff sand to
3. Clay to silty clay	6. Clean sand to silty sand	9. Very stiff fine grained

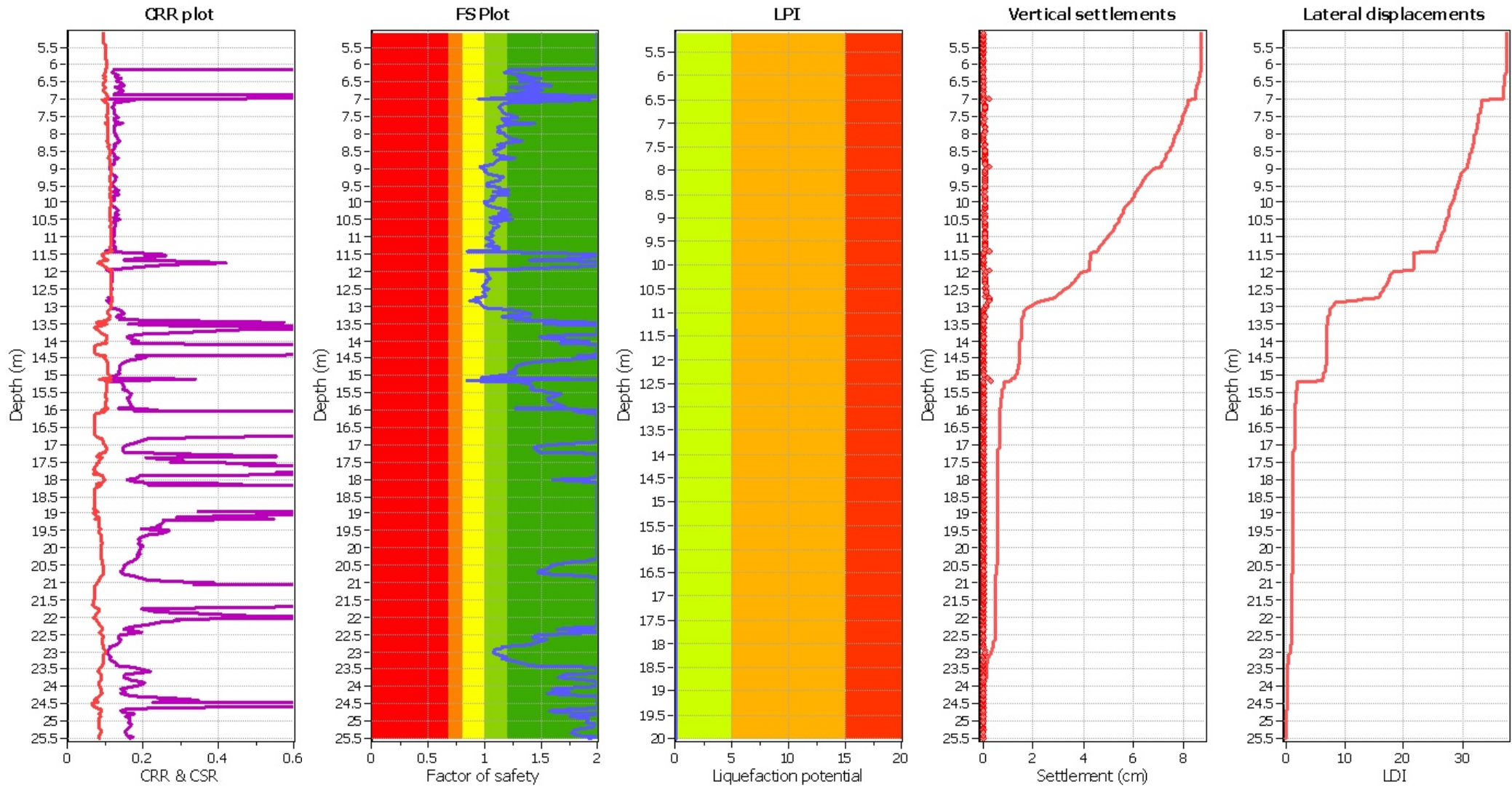
Liquefaction analysis overall plots (intermediate resu



Input parameters and analysis data

Analysis method:	B&I (2014)	Depth to GWT (erthq.):	5.00 m	Fill weight:	N/A
Fines correction method:	B&I (2014)	Average results interval:	3	Transition detect. applied:	No
Points to test:	Based on Ic value	Ic cut-off value:	2.60	K _g applied:	Yes
Earthquake magnitude M _w :	5.68	Unit weight calculation:	Based on SBT	Clay like behavior applied:	Sands only
Peak ground acceleration:	0.15	Use fill:	No	Limit depth applied:	No
Depth to water table (insitu):	5.00 m	Fill height:	N/A	Limit depth:	N/A

Liquefaction analysis overall plot



Input parameters and analysis data

Analysis method:	B&I (2014)	Depth to GWT (erthq.):	5.00 m	Fill weight:	N/A
Fines correction method:	B&I (2014)	Average results interval:	3	Transition detect. applied:	No
Points to test:	Based on Ic value	Ic cut-off value:	2.60	K_g applied:	Yes
Earthquake magnitude M_w :	5.68	Unit weight calculation:	Based on SBT	Clay like behavior applied:	Sands only
Peak ground acceleration:	0.15	Use fill:	No	Limit depth applied:	No
Depth to water table (insitu):	5.00 m	Fill height:	N/A	Limit depth:	N/A

F.S. color scheme

- Almost certain it will liquefy
- Very likely to liquefy
- Liquefaction and no liq. are equally likely
- Unlike to liquefy
- Almost certain it will not liquefy

LPI color scheme

- Very high risk
- High risk
- Low risk