

MICROZONAZIONE SISMICA

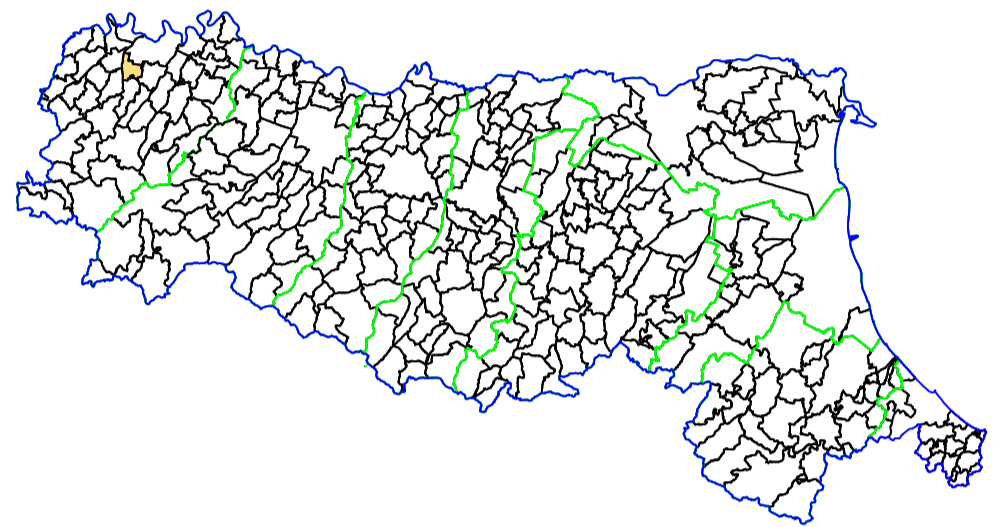
Carta di Microzonazione sismica

Fattore di Amplificazione S12 ($0,5s \leq T \leq 1,0s$)

scala 1 : 5.000

TAV. 07f

Regione Emilia-Romagna
Comune di Gossolengo



Regione	Soggetto realizzatore	Data
	 GEOREFLEX srl Geologia Geofisica Topografia via Carlo Faruzzi, 15 29121 Nicosia - ITALY Tel. +39 0523 454042 Fax. +39 0523 462427 Email: info@georeflex.it	giugno 2020 rev.2

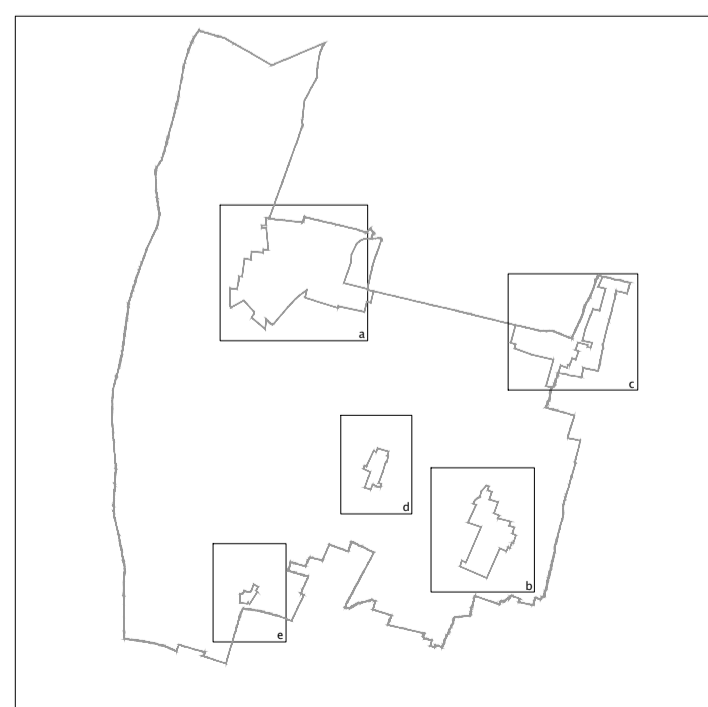
LEGENDA

----- Ambito interessato dallo studio di microzonazione sismica

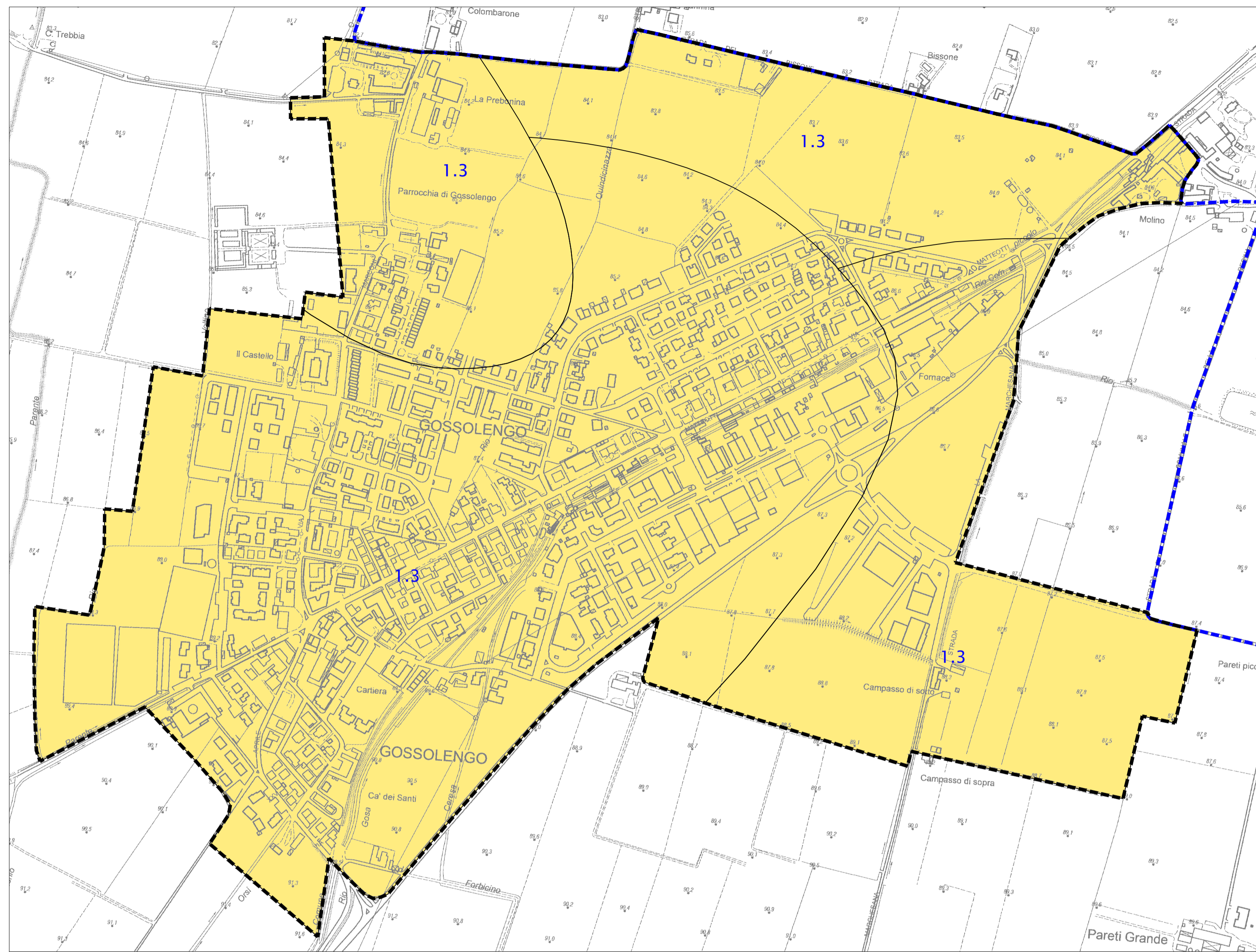
----- Confine comunale

ZONE STABILI SUSCETTIBILI DI AMPLIFICAZIONI LOCALI

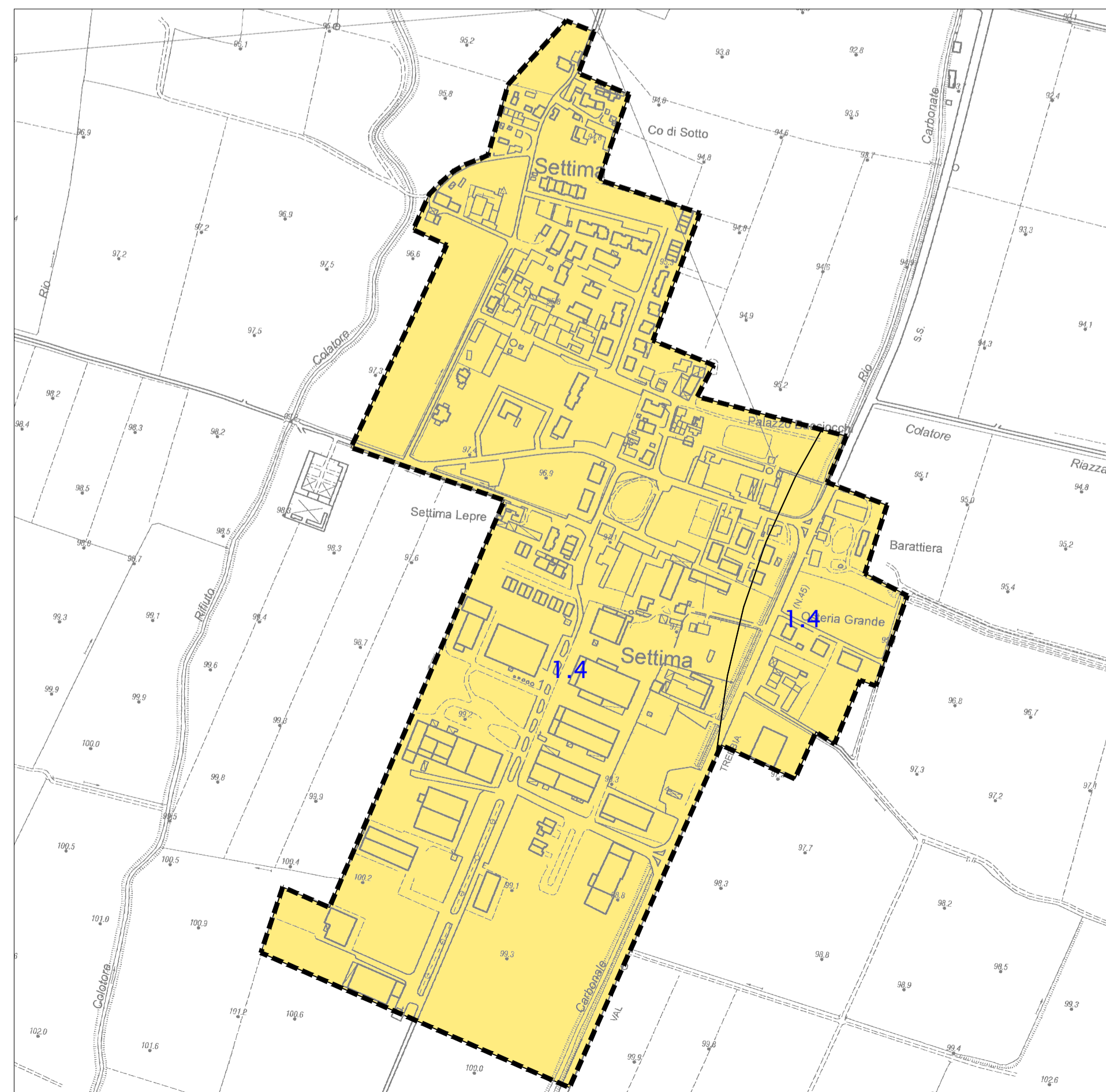
FA (PGA) = 1,3 - 1,4



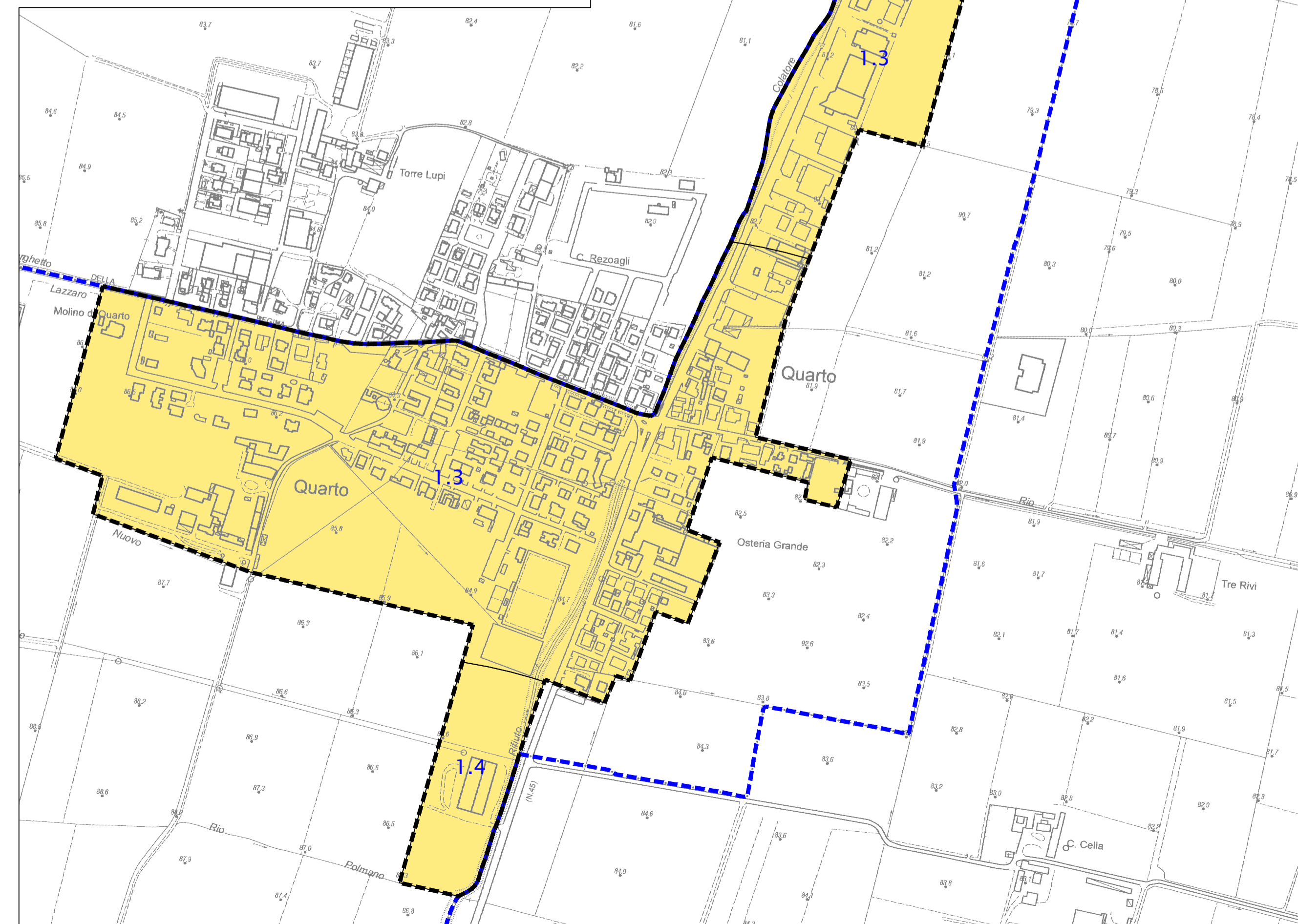
COMUNE DI GOSSOLENGO - SCALA 1:100.000



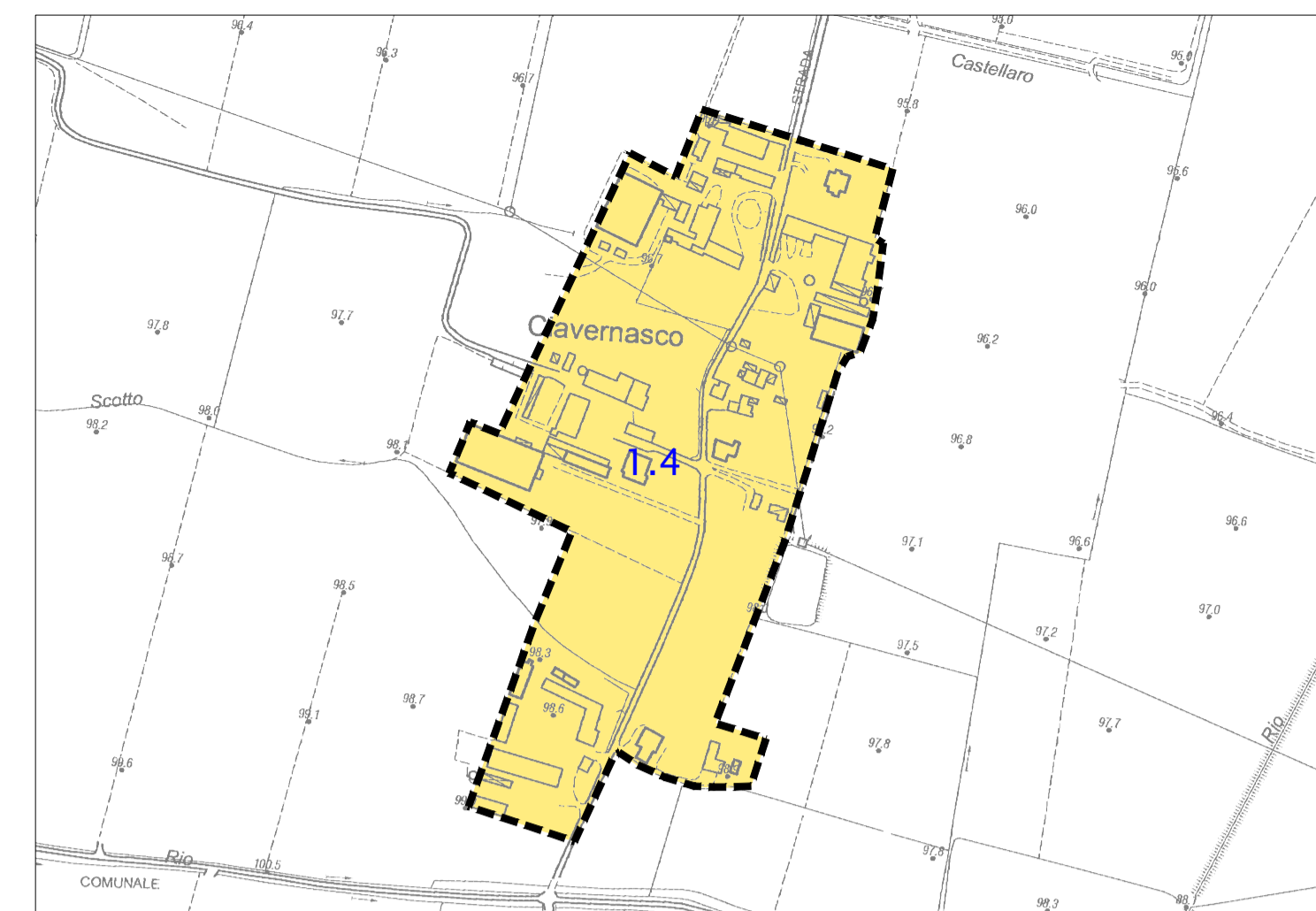
GOSSOLENGO CAPOLUOGO (a)



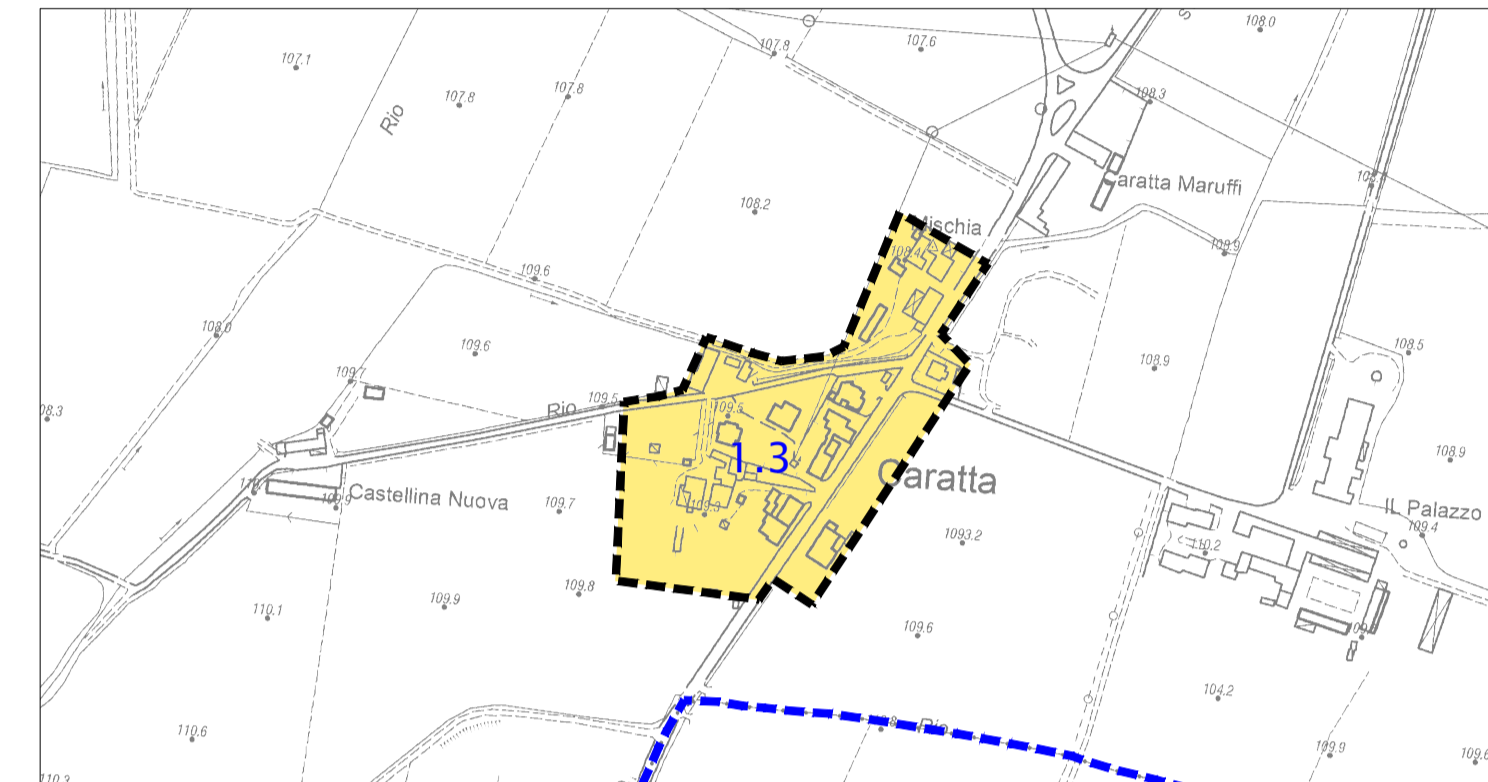
SETTIMA (b)



QUARTO (c)



CIAVENASCO (d)



CARATTA (e)