

MICROZONAZIONE SISMICA

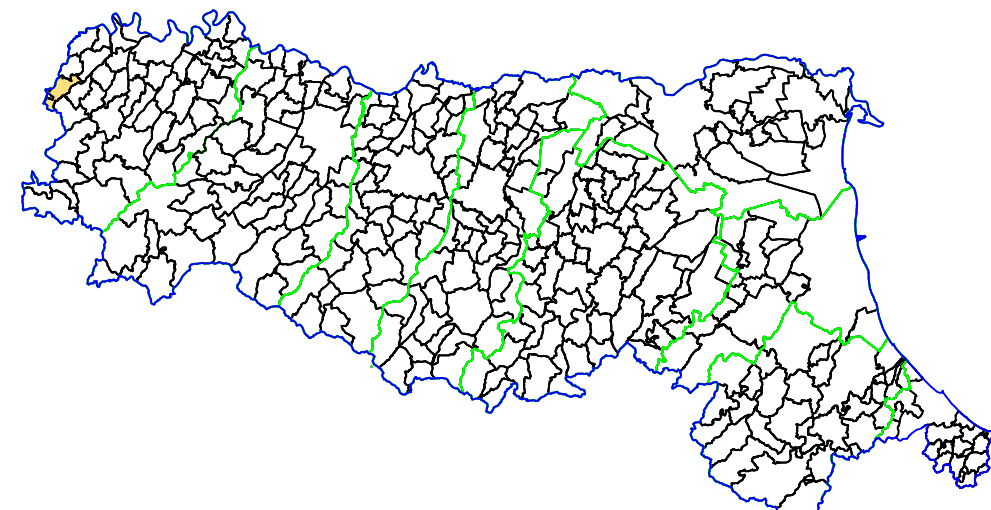
CARTA DI MICROZONAZIONE SISMICA

F.A. PGA

scala 1 : 5.000

TAV. 07a

Regione Emilia-Romagna
Comune di Nibbiano







Regione	Soggetto realizzatore	Data
	 Ambiter S.p.A. società di ingegneria ambientale Via Niccolò, 3/A - 41124 Parma (PR) Tel. 0521/840000 - Fax 0521/840000 email: info@ambiter.it P.I.C. 01678080154	novembre 2017





LEGENDA

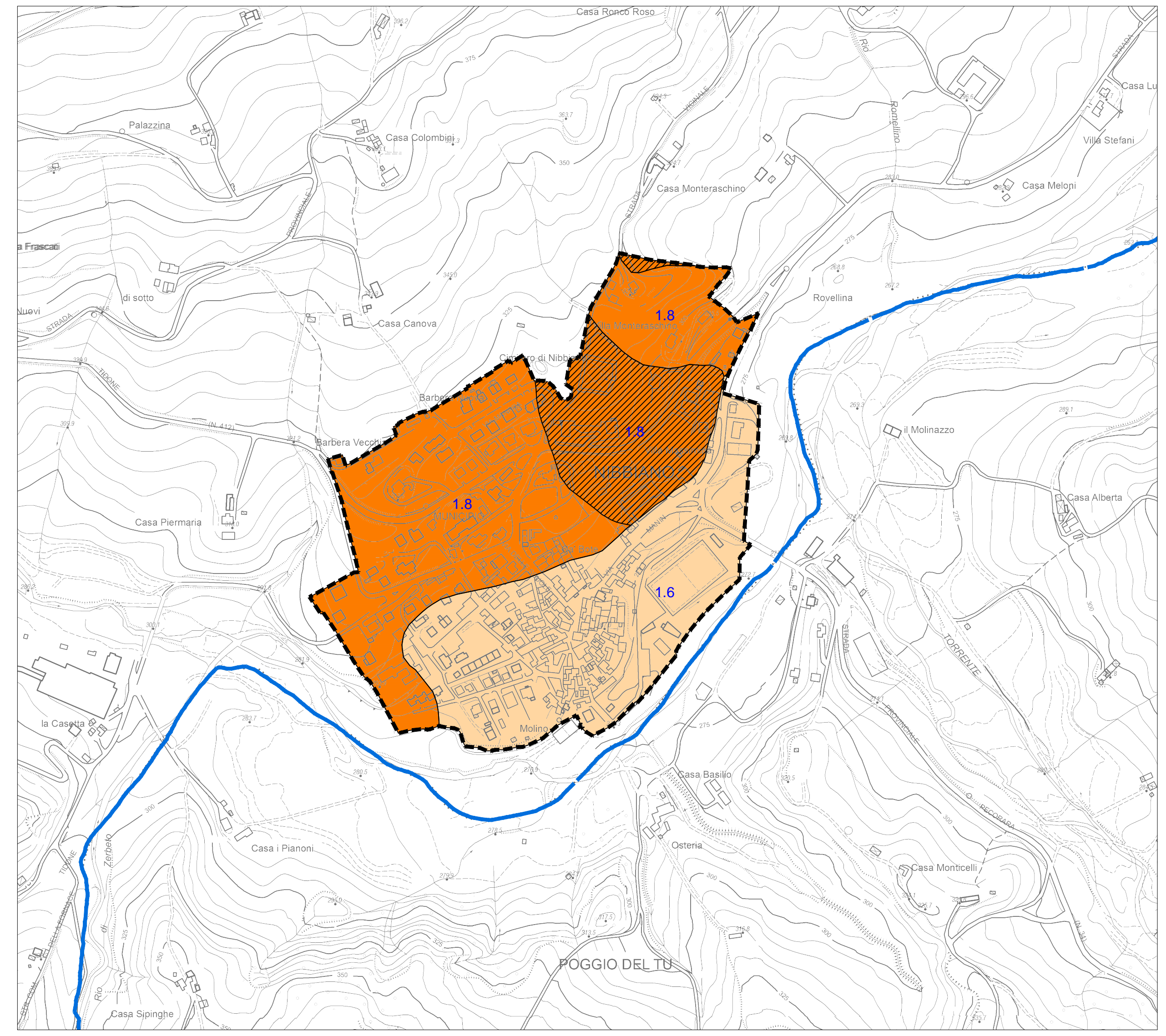
Ambito interessato dallo studio di microzonazione sismica
 Confine comunale

ZONE STABILI SUSCETTIBILI DI AMPLIFICAZIONI LOCALI

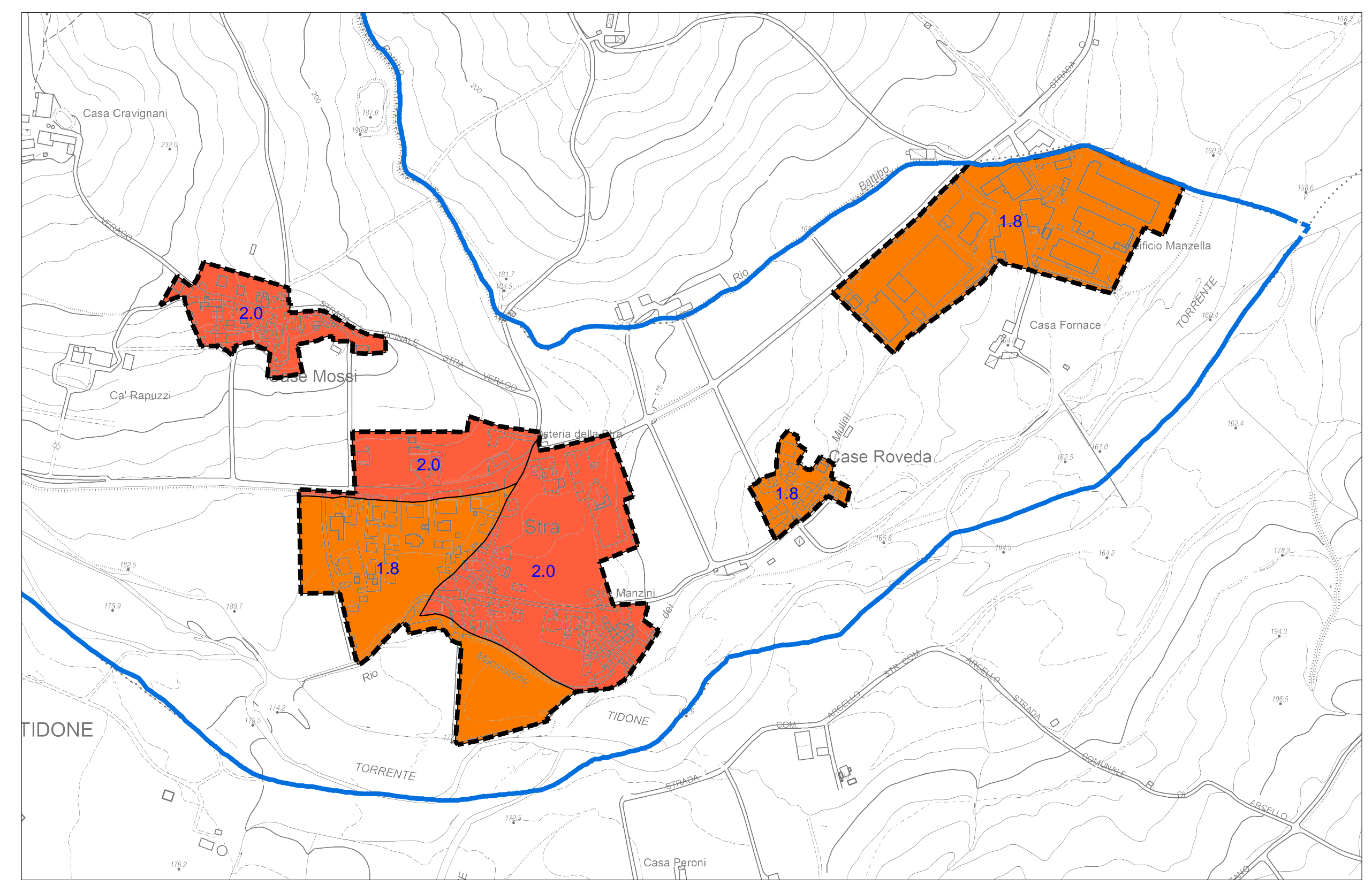
	F.A. PGA = 1.5 - 1.6
	F.A. PGA = 1.7 - 1.8
	F.A. PGA = 1.9 - 2.0
	F.A. PGA = 2.1 - 2.2

ZONE DI ATTENZIONE PER INSTABILITÀ DI VERSANTE

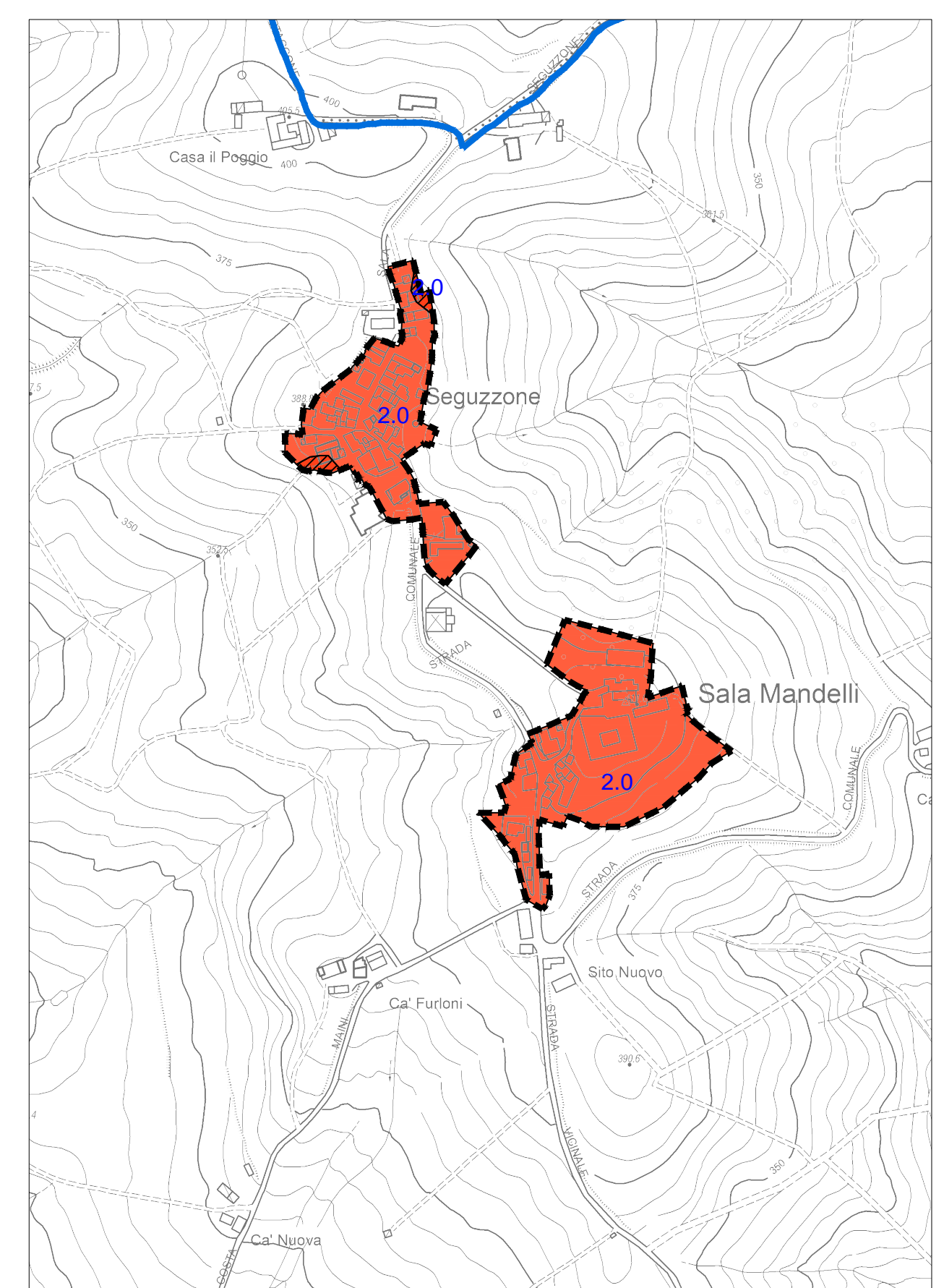
	F.A. PGA = 1.5 - 1.6
	F.A. PGA = 1.7 - 1.8
	F.A. PGA = 1.9 - 2.0
	F.A. PGA = 2.1 - 2.2



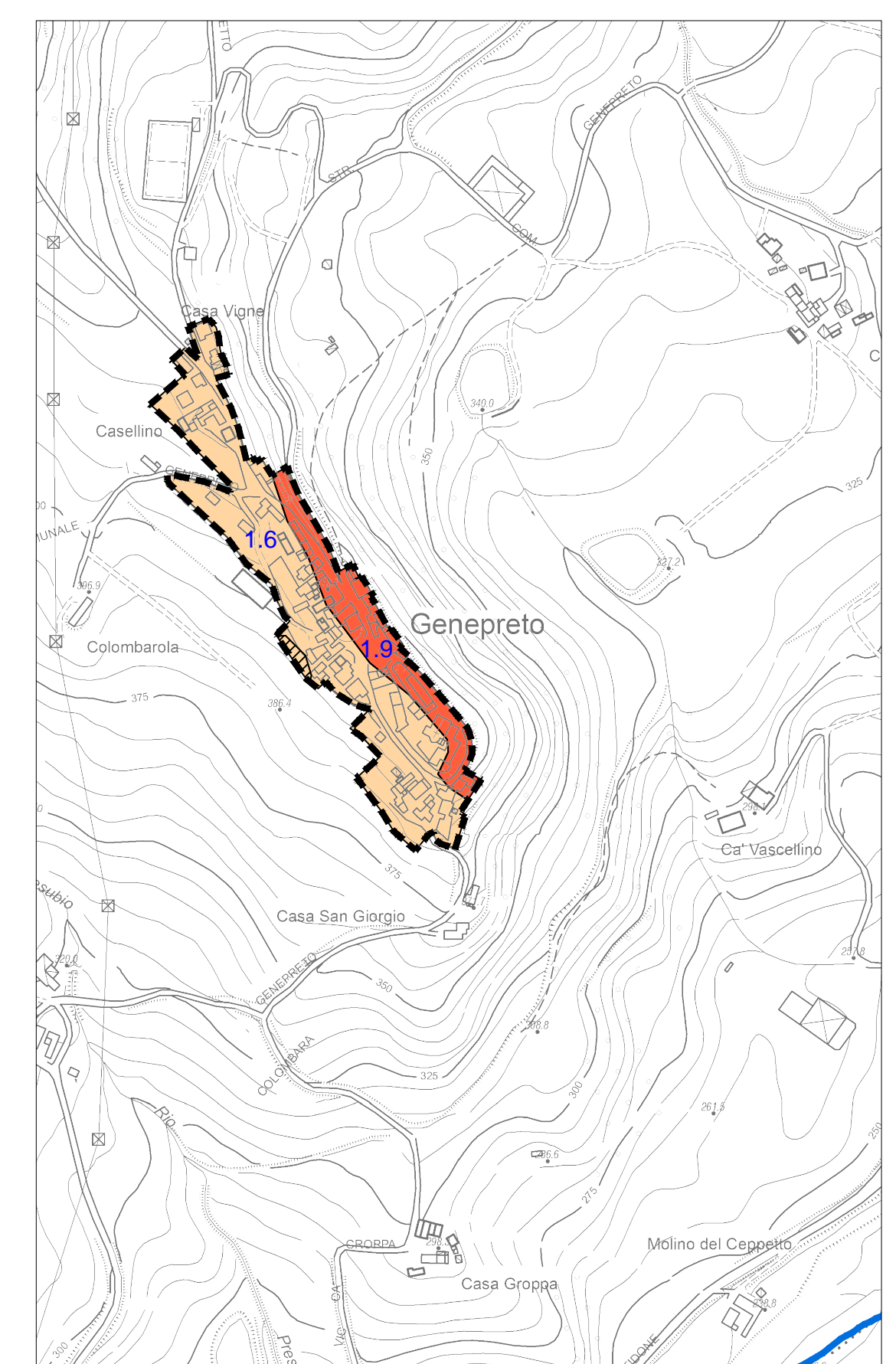
NIBBIANO (A)



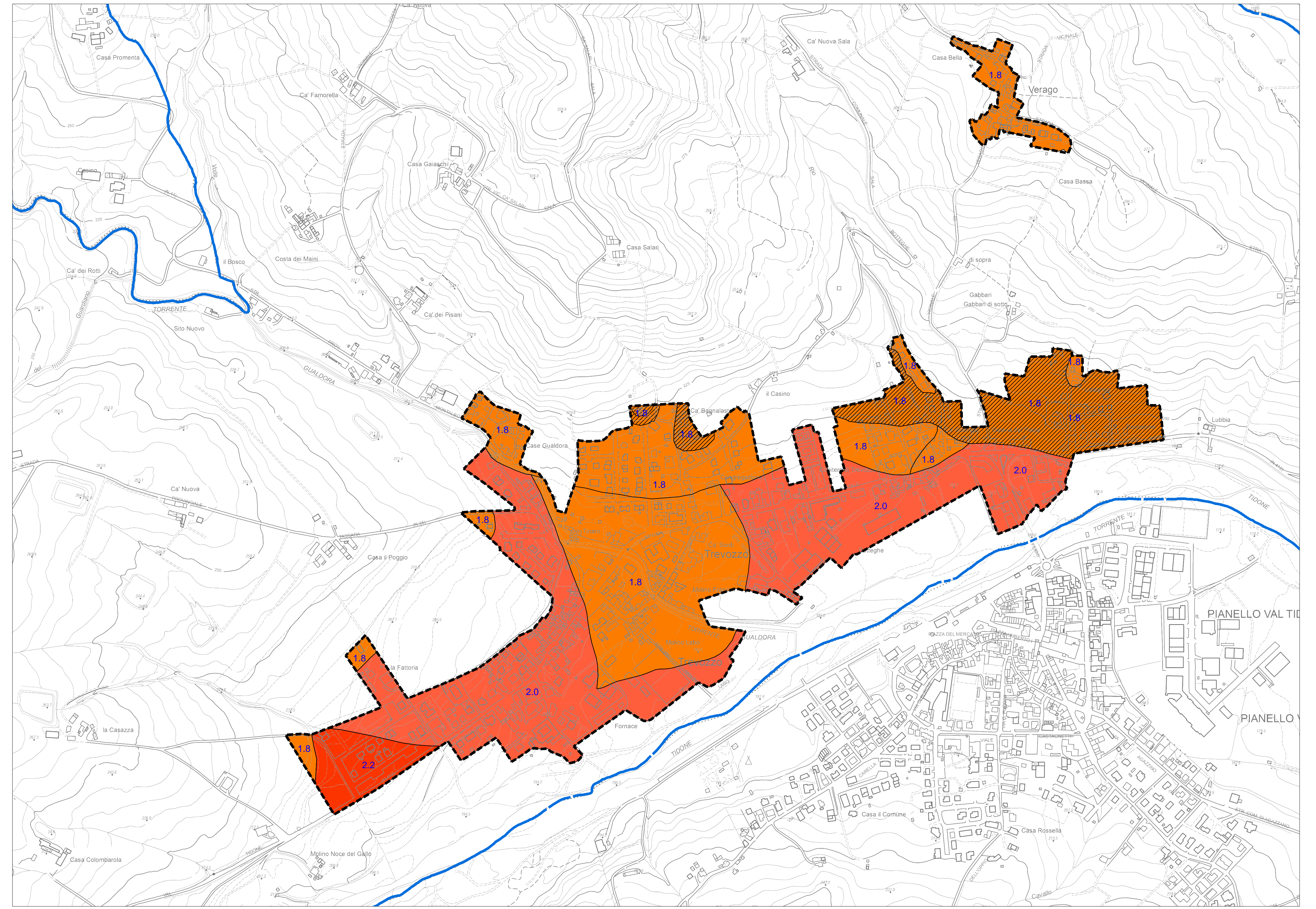
STRA (C)



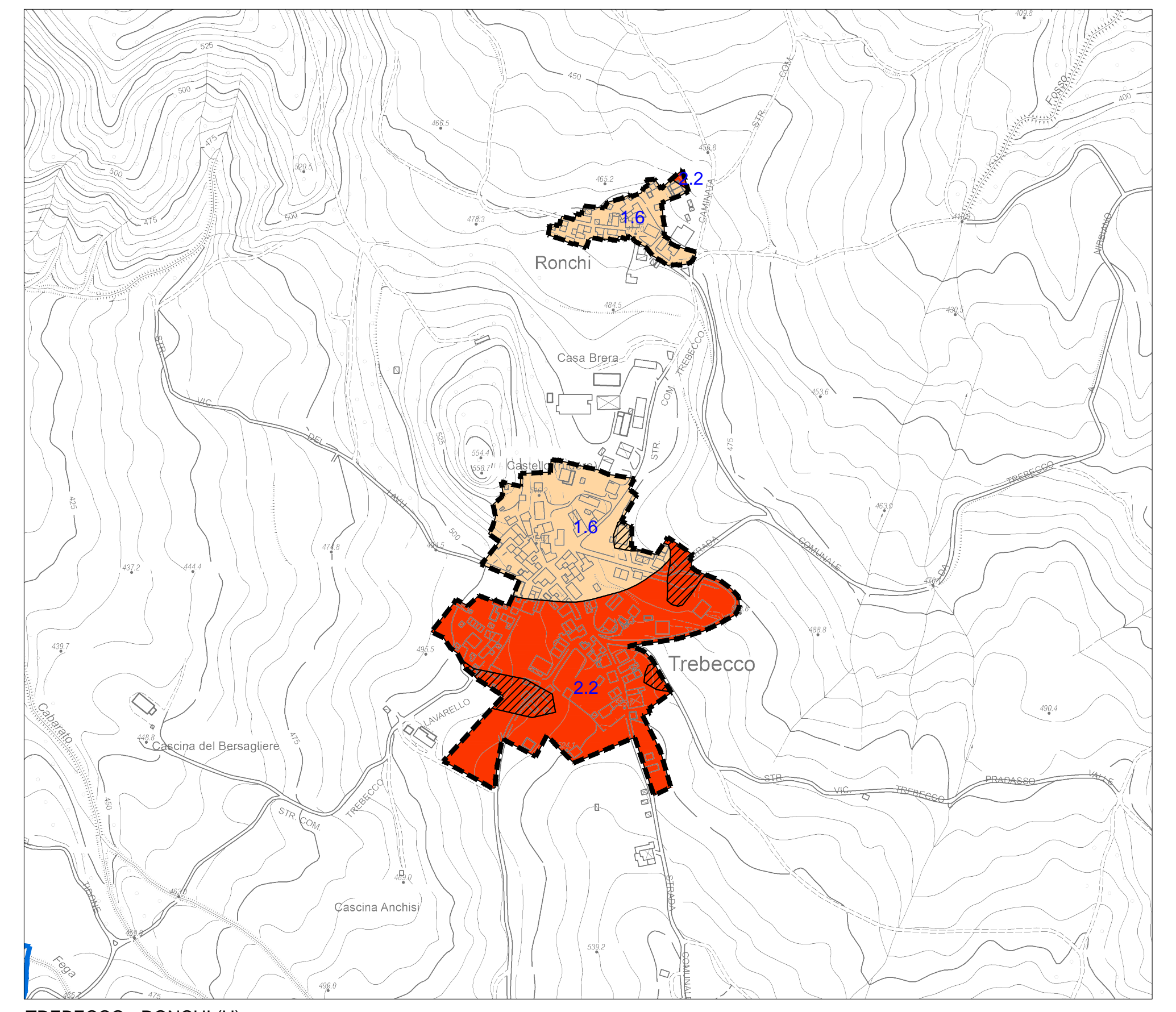
SEGUZZONE - SALA MANDELLI (D)



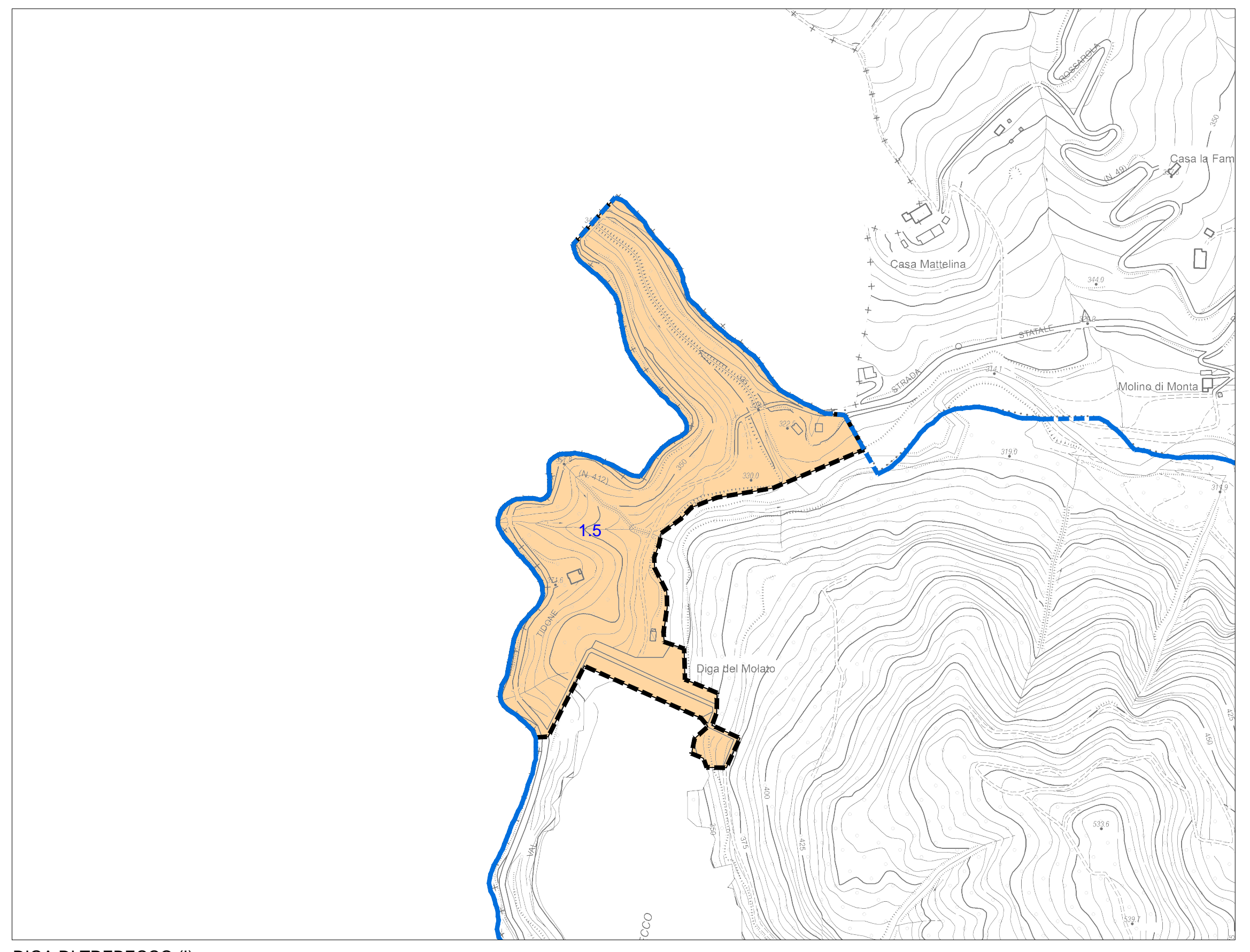
GENEPRETO (E)



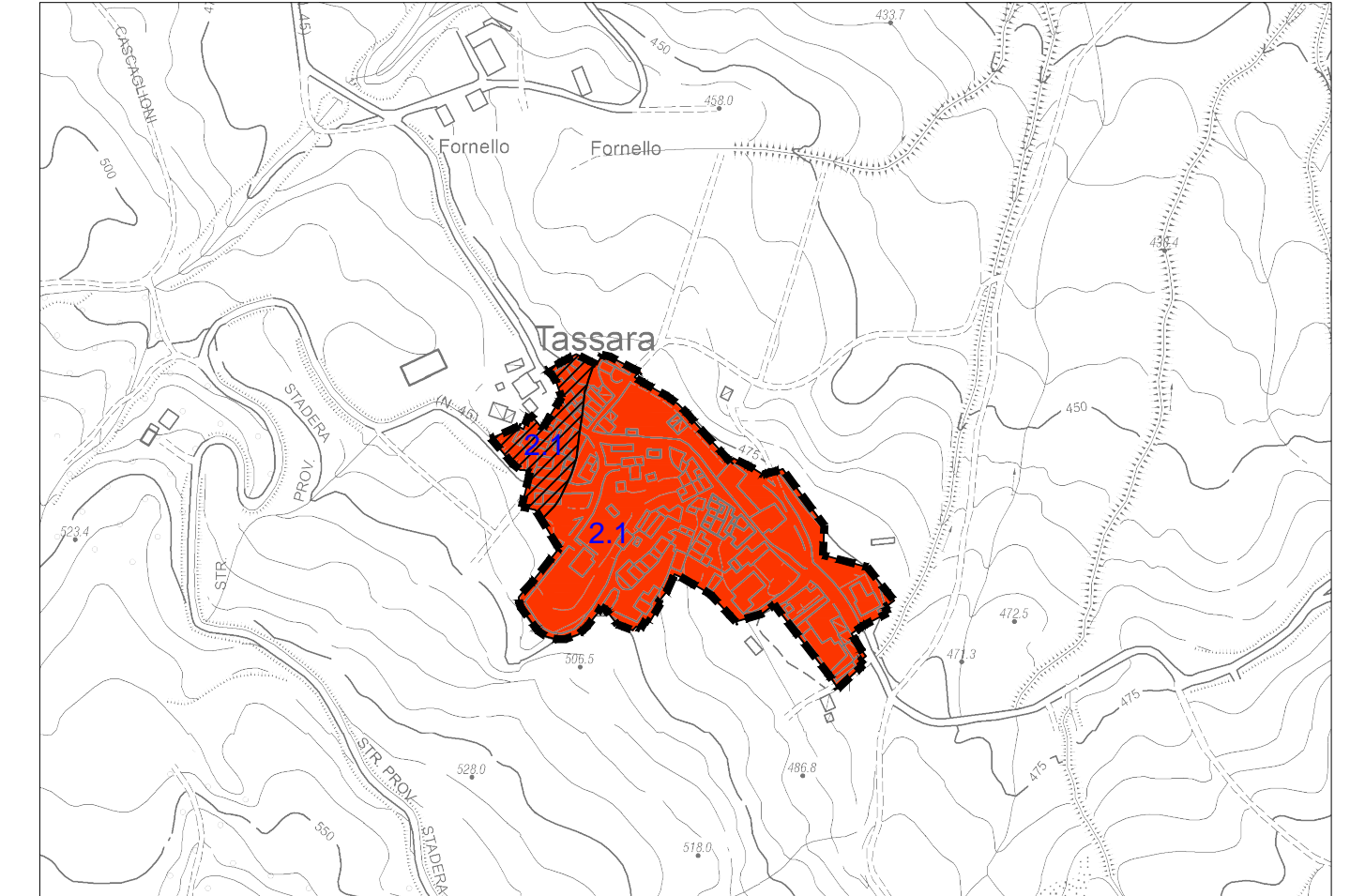
TREVOZZO (B)



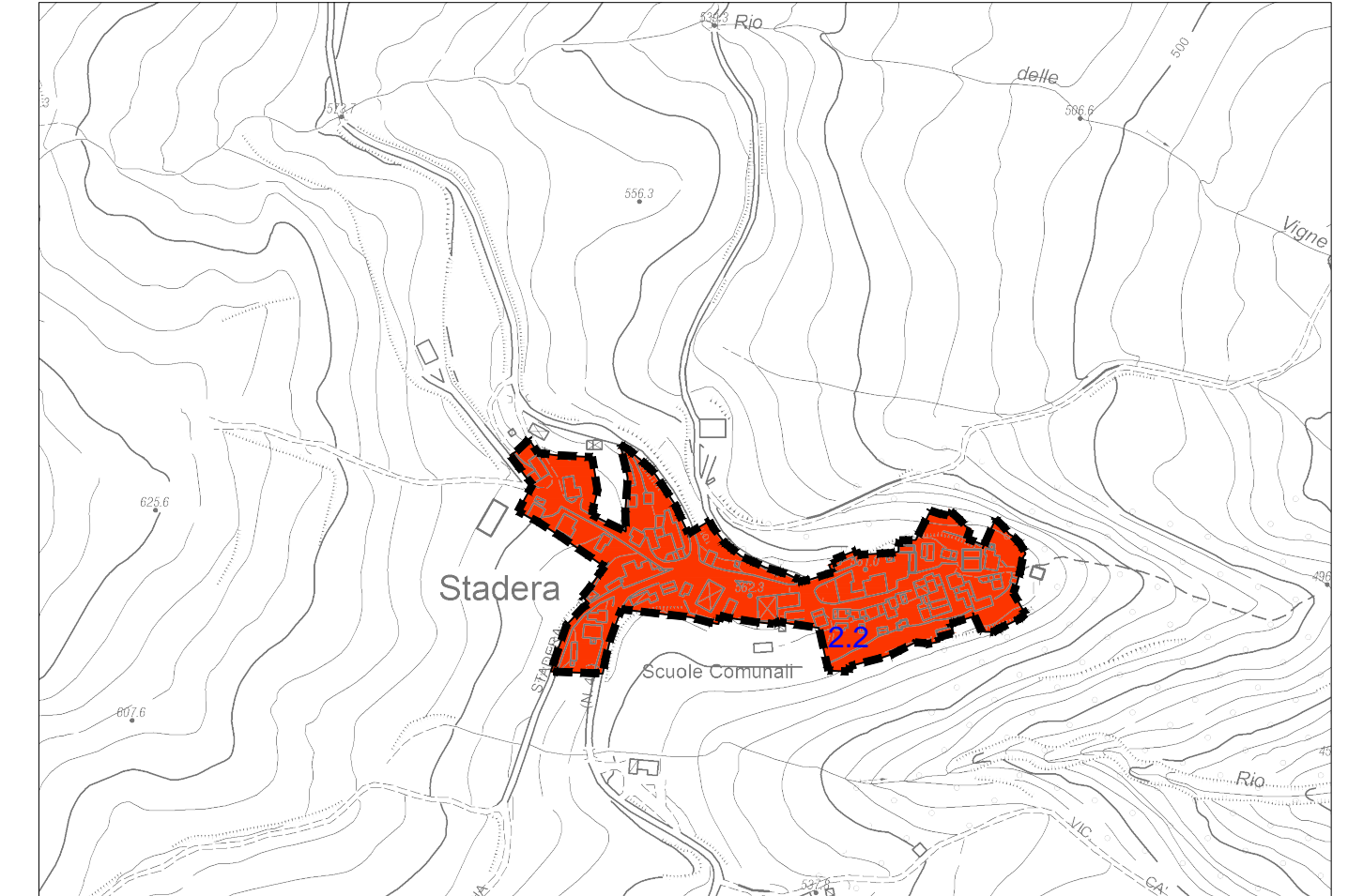
TREBECCO - RONCHI (H)



DIGA DI TREBECCO (I)



TASSARA (F)



STADERA (G)

