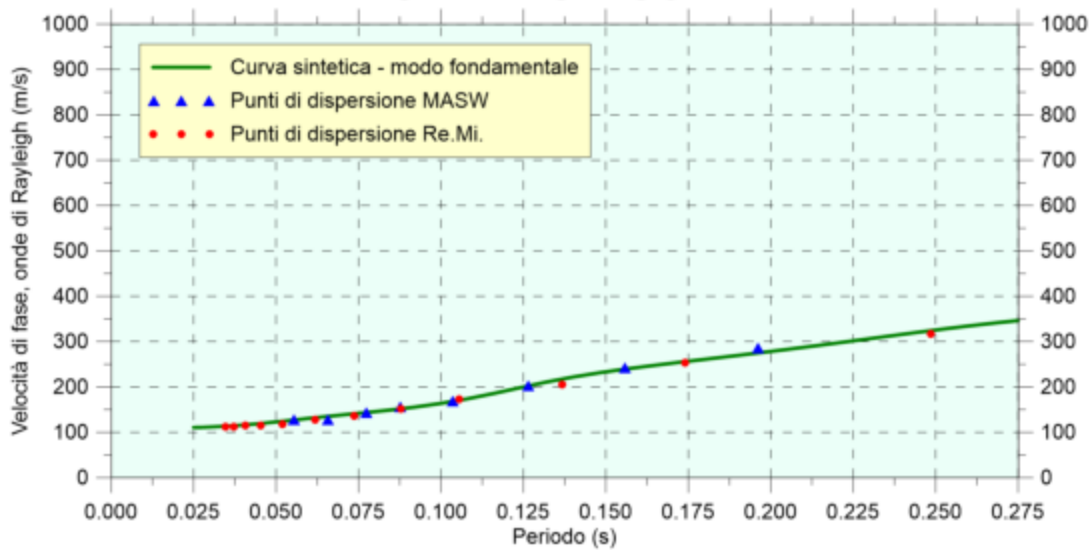

Allegato 2

Monografie prove MASW

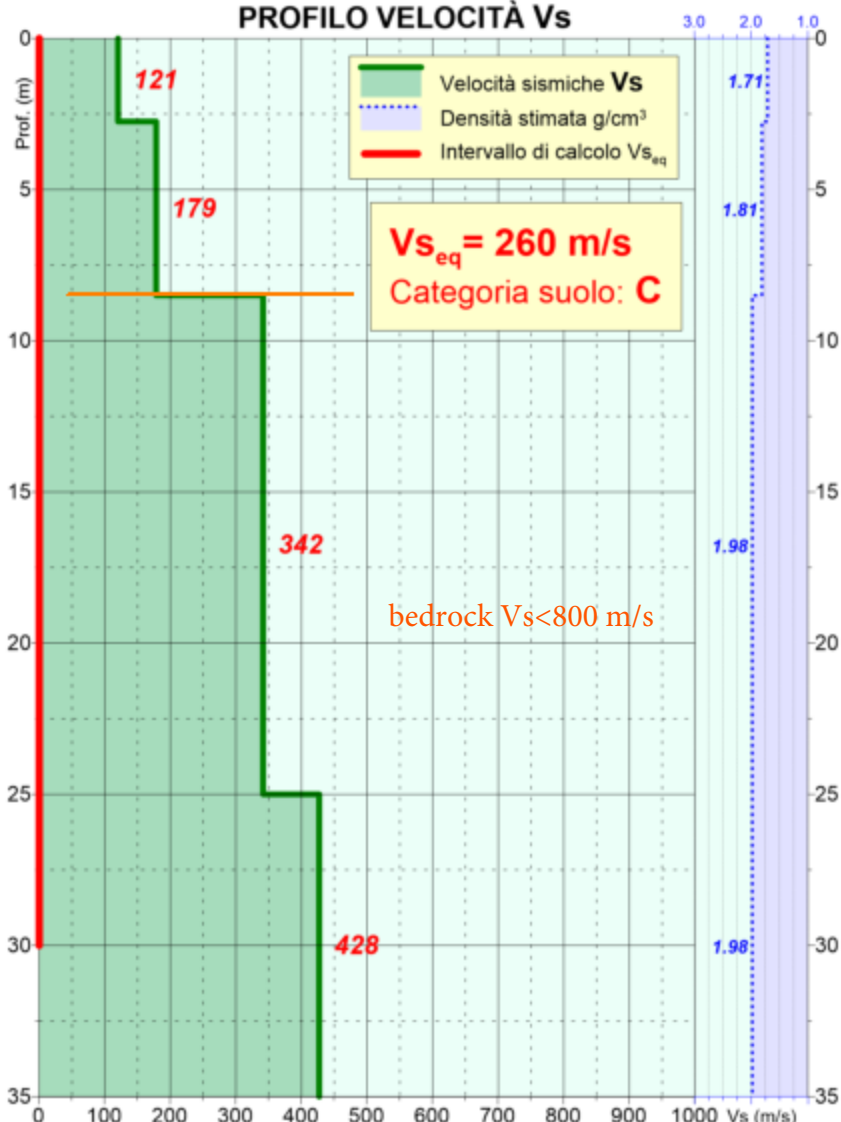
MS2 - Chiosi di Bobbiano - maggio-2022

033043L114MASW116

CURVA DI DISPERSIONE



PROFILO VELOCITÀ Vs



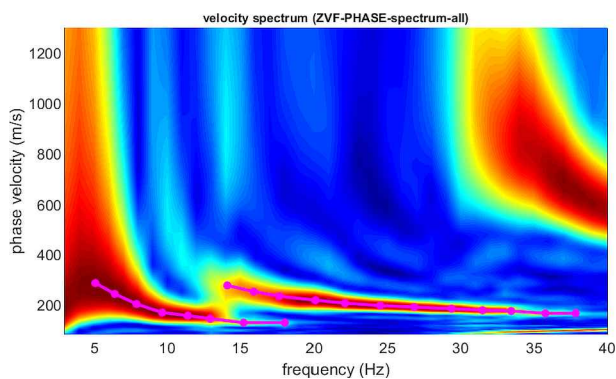
Vs8.5=153 m/s

| prof.(m) | spessore(m) | Vs (m/s) |
|----------|-------------|----------|
| 2.8 | 2.8 | 121 |
| 8.5 | 5.8 | 179 |
| 25.0 | 16.5 | 342 |
| 35.0 | 10.0 | 428 |
| | | |
| | | |
| | | |
| | | |
| | | |
| | | |
| | | |
| | | |
| | | |
| | | |
| | | |
| | | |
| | | |

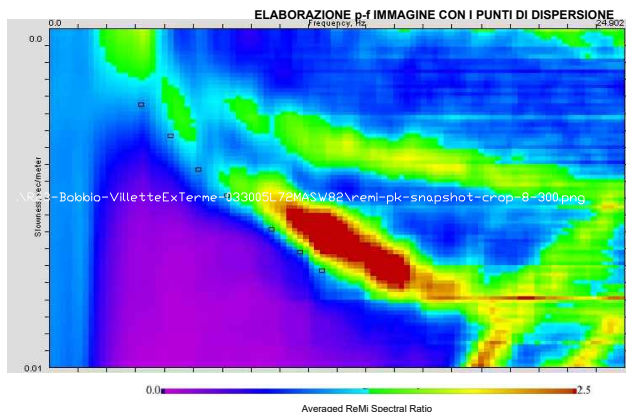
MS2 - Chiosi di Bobbiano - maggio-2022

033043L114MASW116

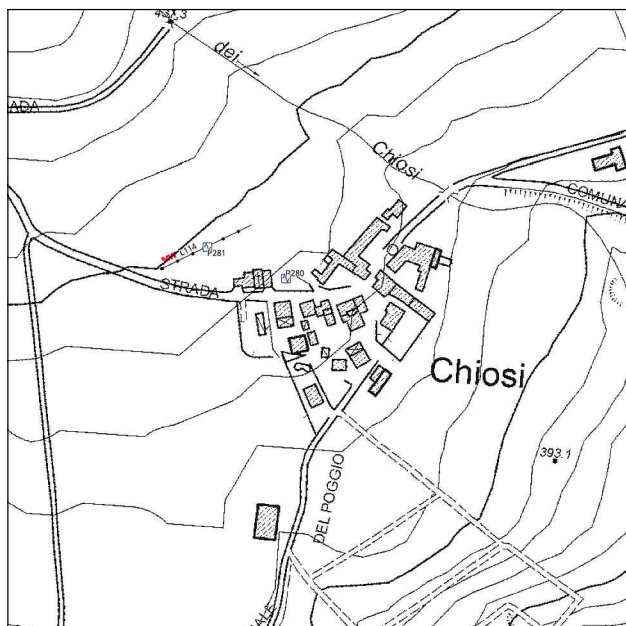
PROVA M.A.S.W. - Spettro medio



PROVA Re.Mi. - Spettro medio



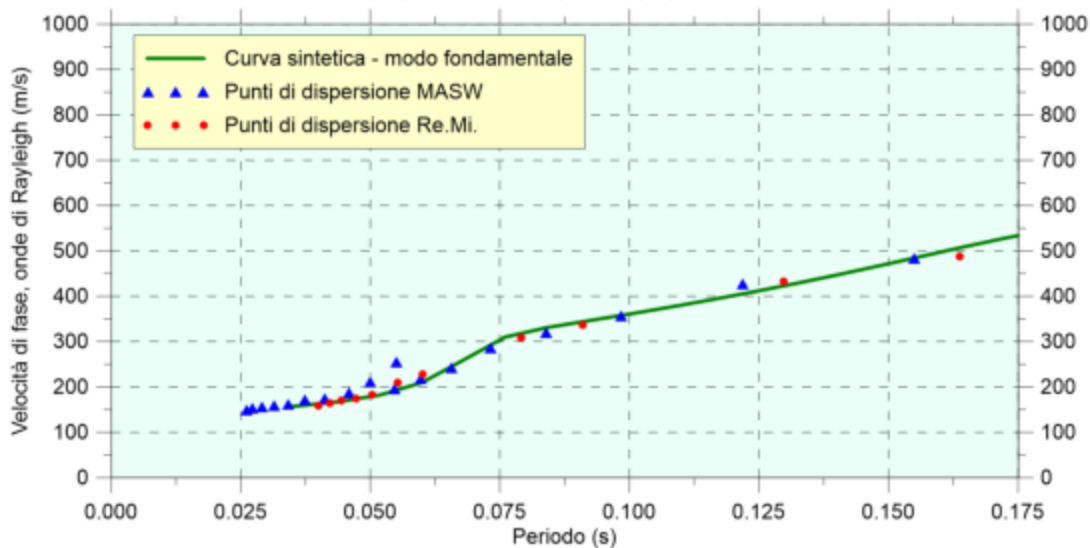
Ubicazione prova



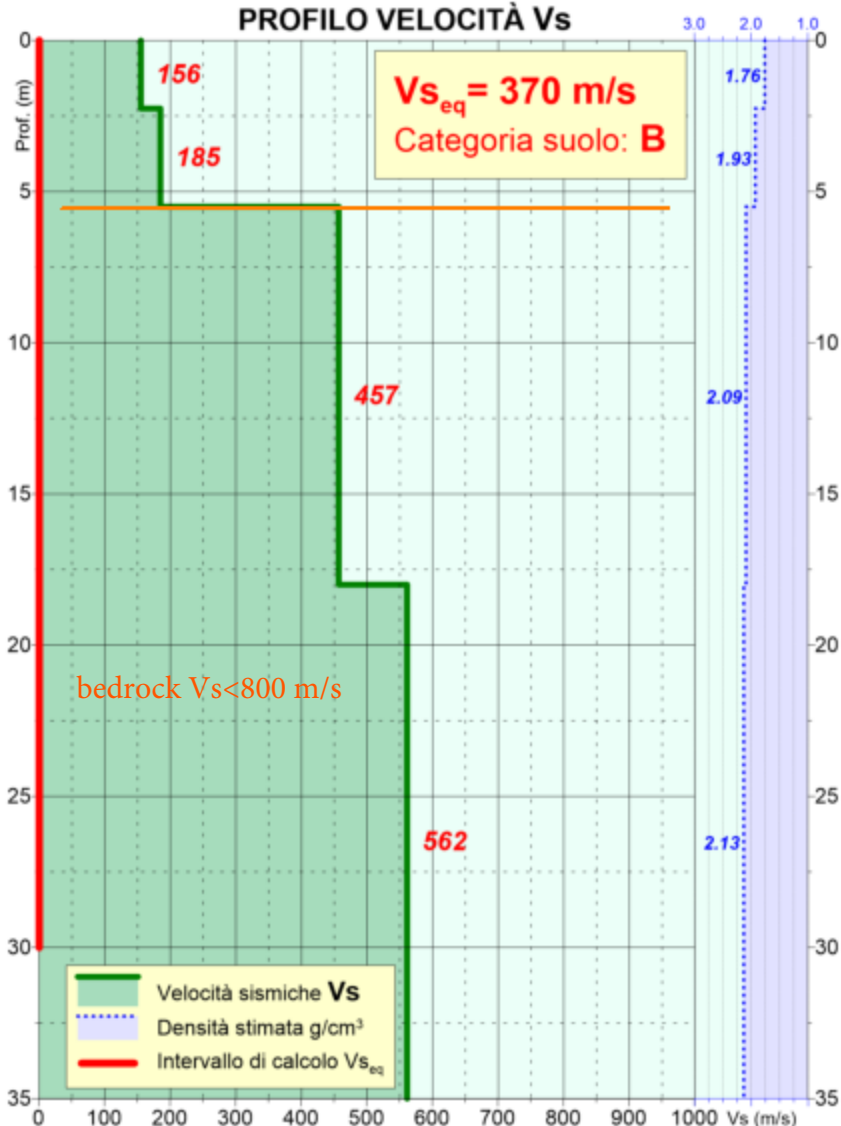
MS2 - Travo Via Borsellino - maggio-2022

033043L115MASW117

CURVA DI DISPERSIONE



PROFILO VELOCITÀ Vs



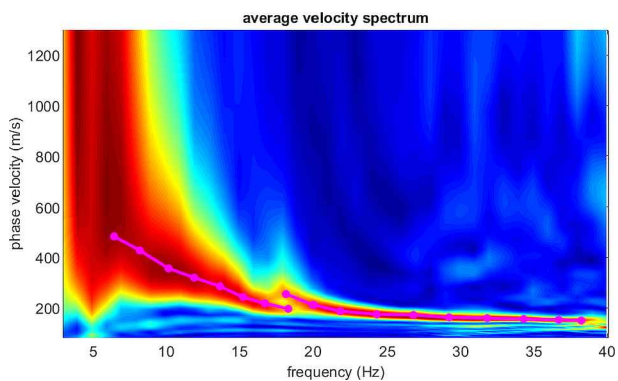
$V_{s5.5} = 172 \text{ m/s}$

| prof.(m) | spessore(m) | Vs (m/s) |
|----------|-------------|----------|
| 2.3 | 2.3 | 156 |
| 5.5 | 3.3 | 185 |
| 18.0 | 12.5 | 457 |
| 35.0 | 17.0 | 562 |
| | | |
| | | |
| | | |
| | | |
| | | |
| | | |
| | | |

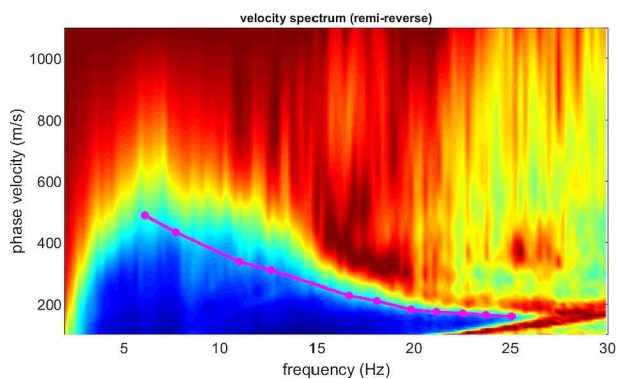
MS2 - Travo Via Borsellino - maggio-2022

033043L115MASW117

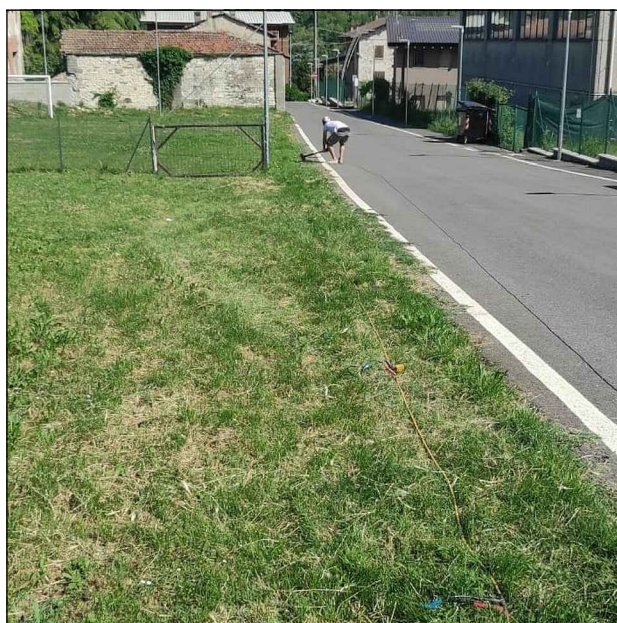
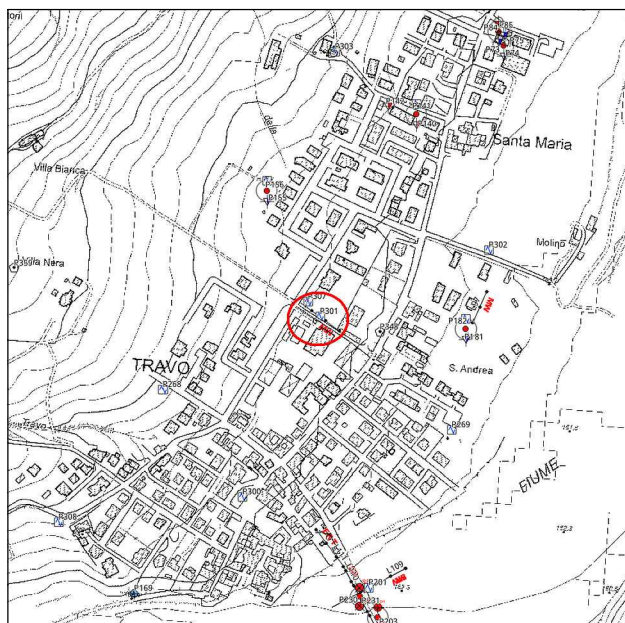
PROVA M.A.S.W. - Spettro medio



PROVA Re.Mi. - Spettro medio



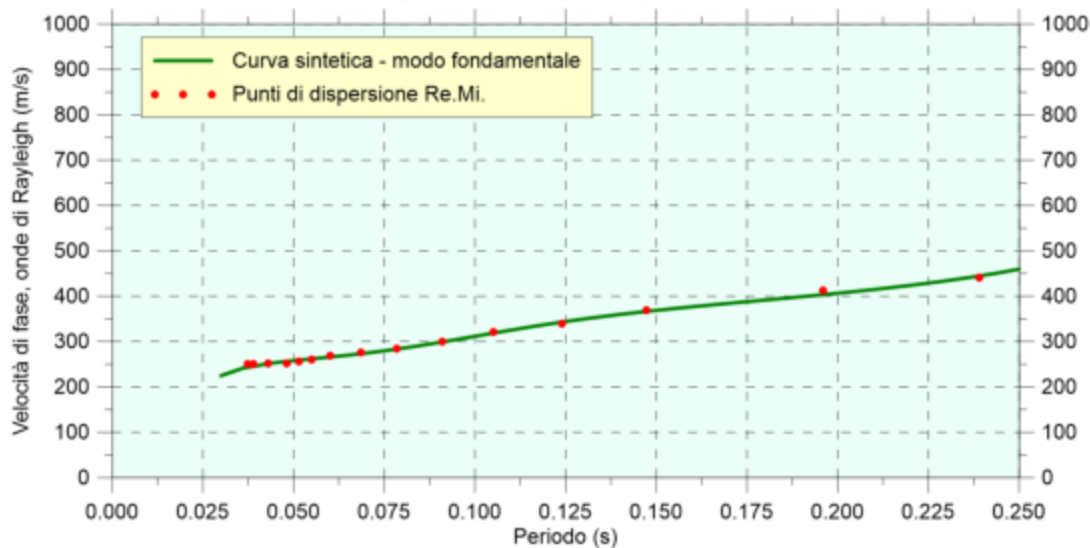
Ubicazione prova



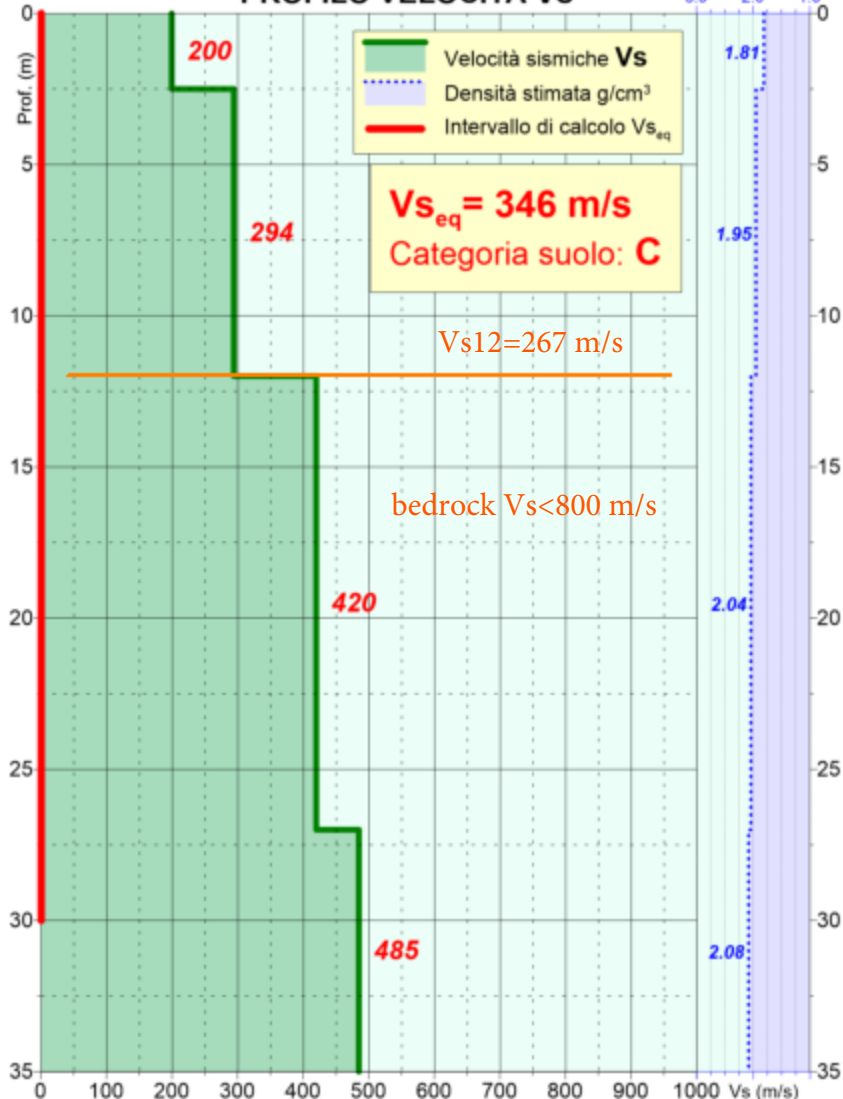
MS2 - Scrivellano - ottobre-2022

033043L118MASW118

CURVA DI DISPERSIONE



PROFILO VELOCITÀ Vs

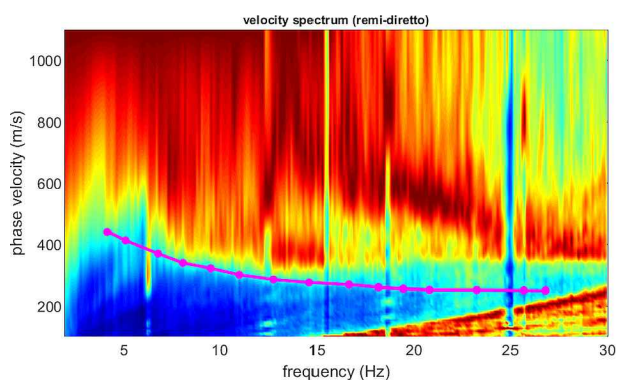


| prof.(m) | spessore(m) | Vs (m/s) |
|----------|-------------|----------|
| 2.5 | 2.5 | 200 |
| 12.0 | 9.5 | 294 |
| 27.0 | 15.0 | 420 |
| 35.0 | 8.0 | 485 |
| | | |
| | | |
| | | |
| | | |
| | | |
| | | |
| | | |
| | | |
| | | |
| | | |

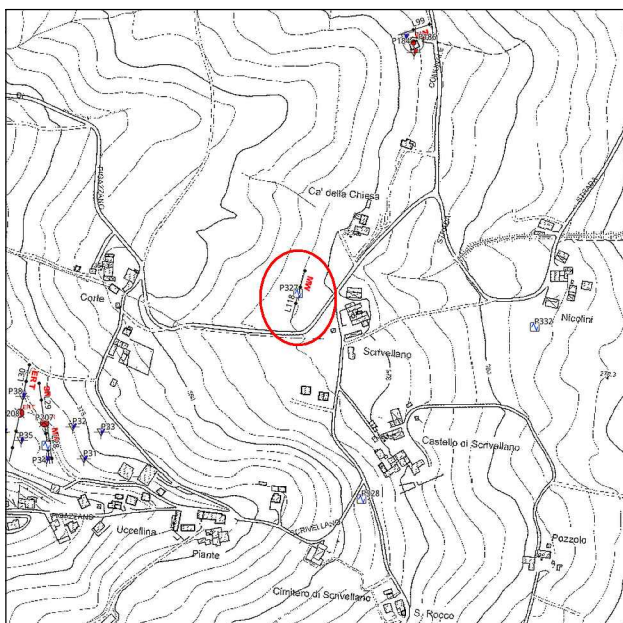
MS2 - Scrivellano - ottobre-2022

033043L118MASW118

PROVA Re.Mi. - Spettro medio

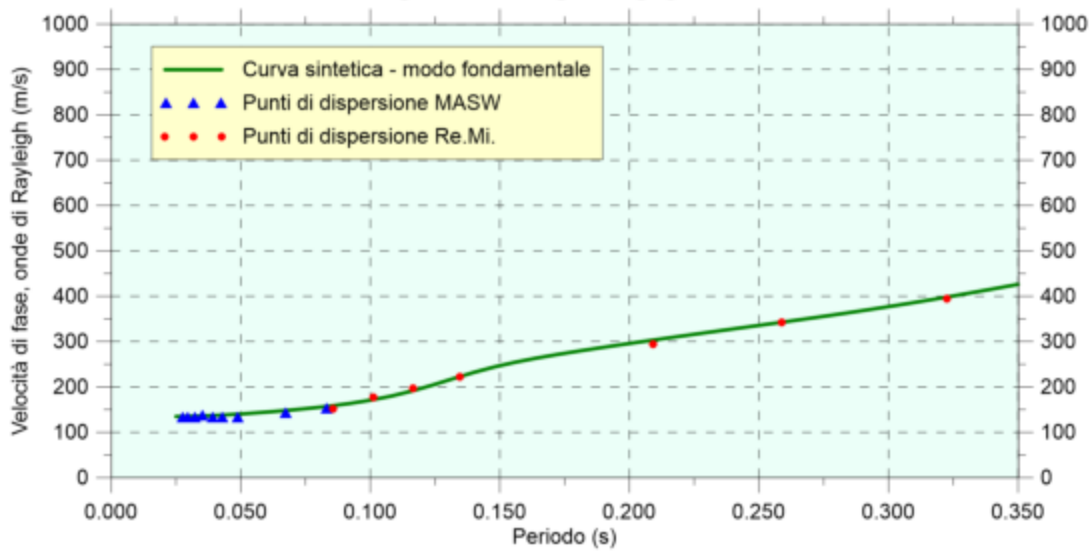


Ubicazione prova

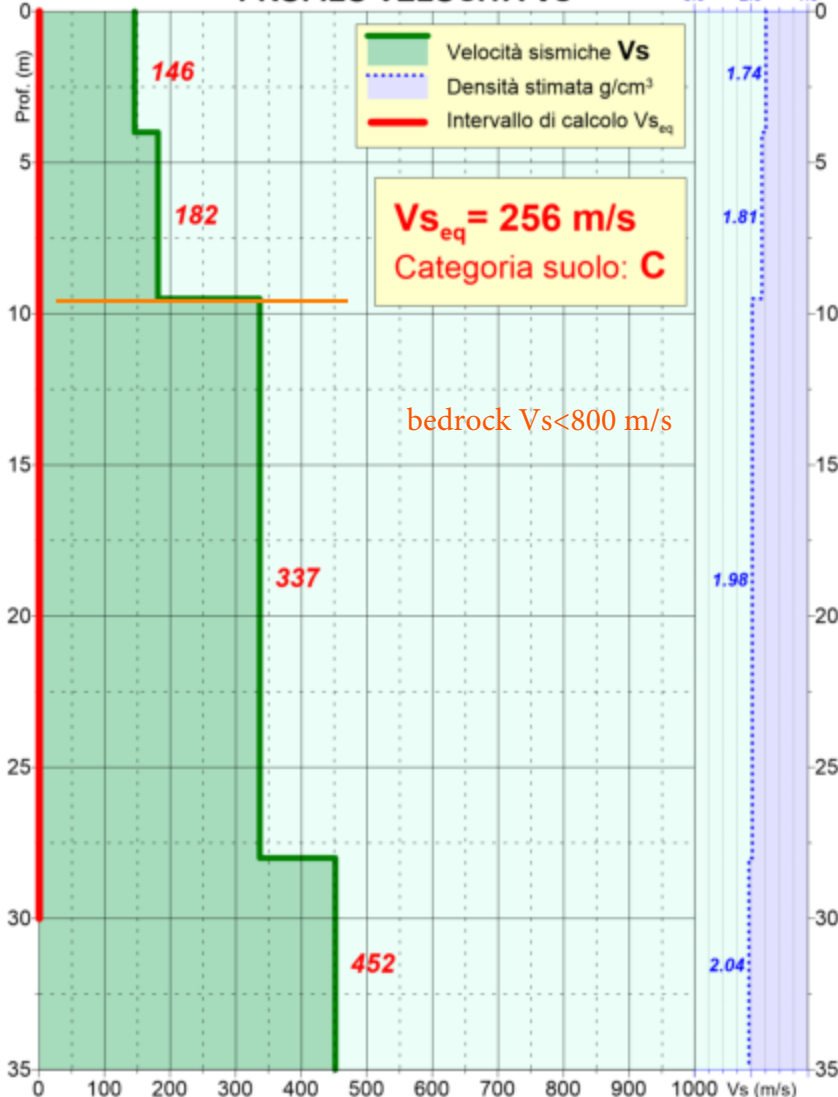


MS2 - Statto - Case Marchesi - ottobre-2022 033043L117MASW119

CURVA DI DISPERSIONE



PROFILO VELOCITÀ Vs



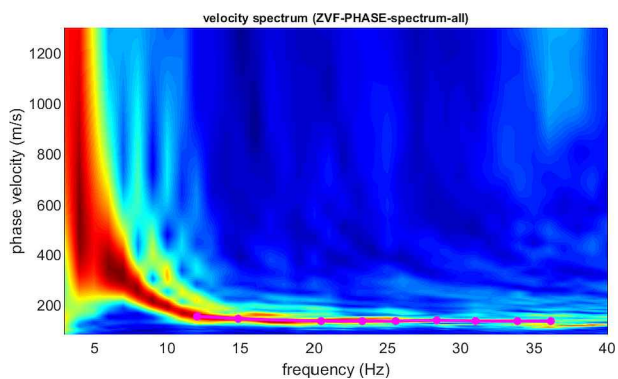
Vs9.5=165 m/s

| prof.(m) | spessore(m) | Vs (m/s) |
|----------|-------------|----------|
| 4.0 | 4.0 | 146 |
| 9.5 | 5.5 | 182 |
| 28.0 | 18.5 | 337 |
| 35.0 | 7.0 | 452 |
| | | |
| | | |
| | | |
| | | |
| | | |
| | | |
| | | |
| | | |
| | | |
| | | |

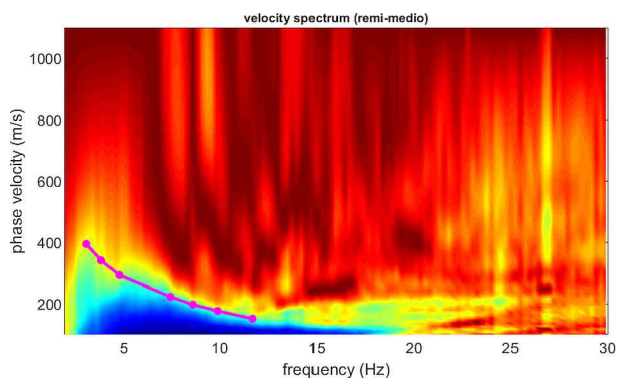
MS2 - Statto - Case Marchesi - ottobre-2022

033043L117MASW119

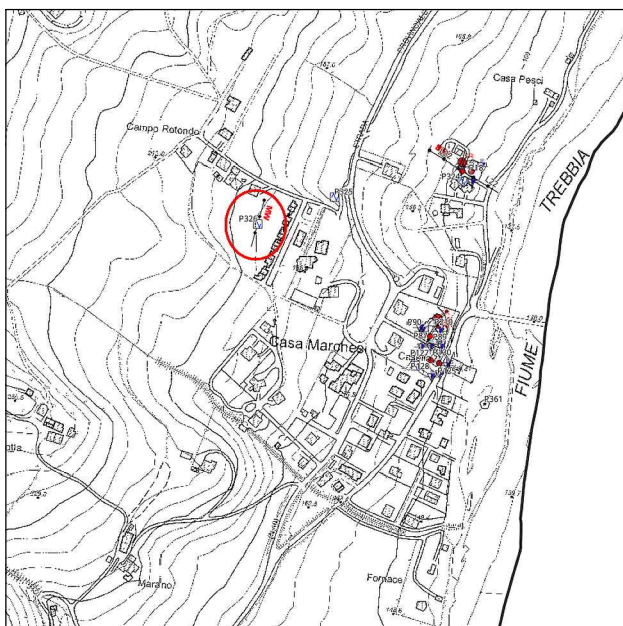
PROVA M.A.S.W. - Spettro medio



PROVA Re.Mi. - Spettro medio



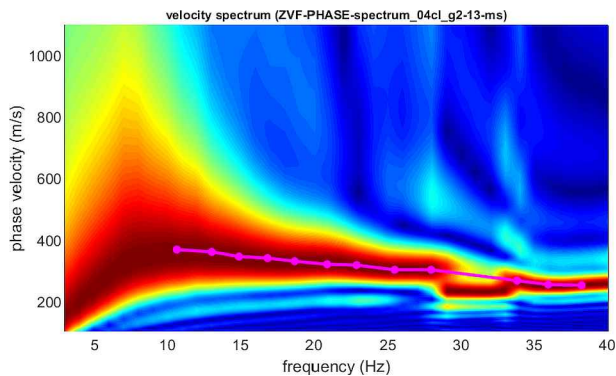
Ubicazione prova



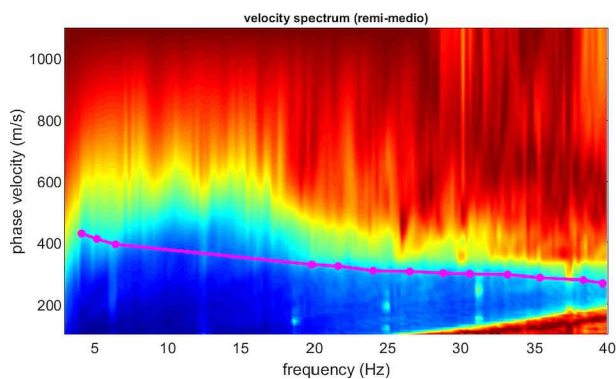
MS2 - Piane sopra - ottobre-2022

033043L116MASW120

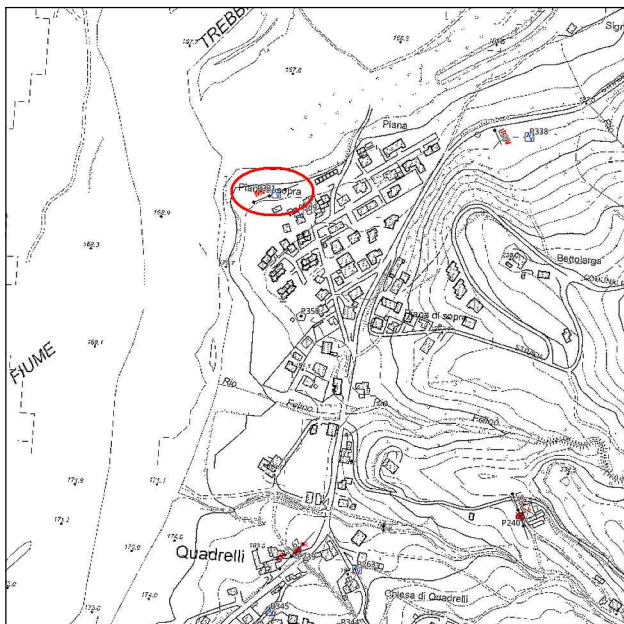
PROVA M.A.S.W. - Spettro medio



PROVA Re.Mi. - Spettro medio



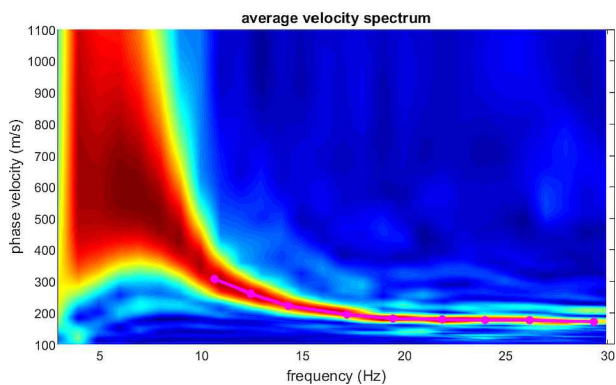
Ubicazione prova



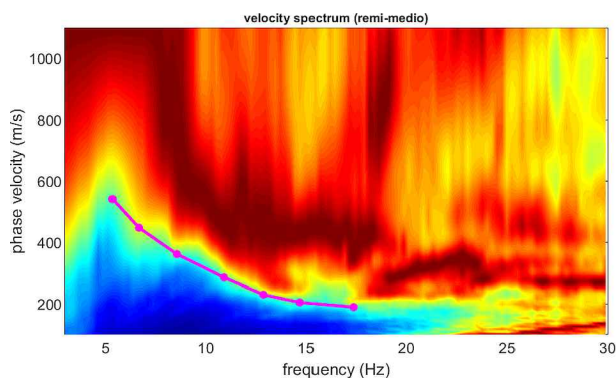
MS2 - Montalbero - ottobre-2022

033043L119MASW121

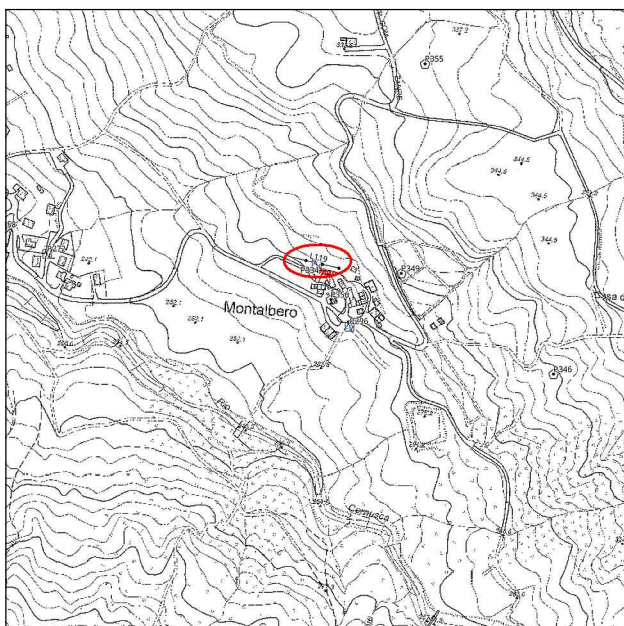
PROVA M.A.S.W. - Spettro medio



PROVA Re.Mi. - Spettro medio



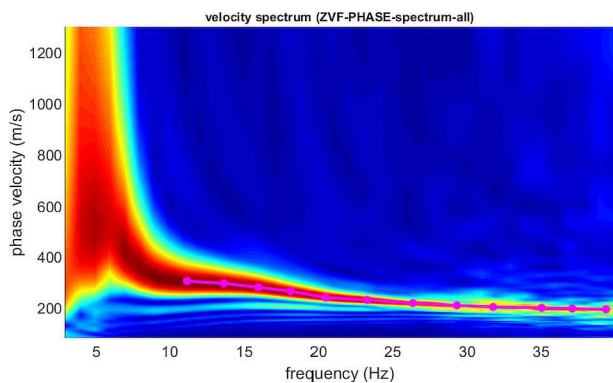
Ubicazione prova



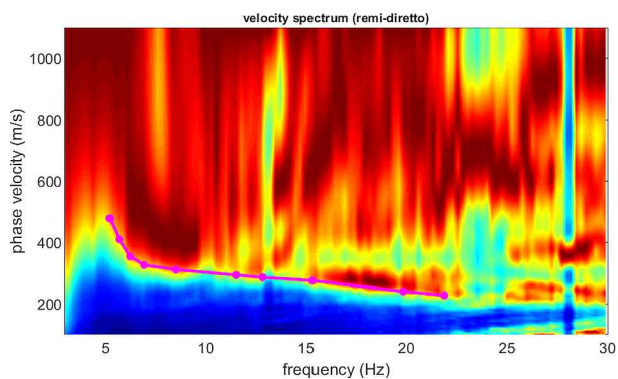
MS2 - Casa dei Re - ottobre-2022

033043L113MASW122

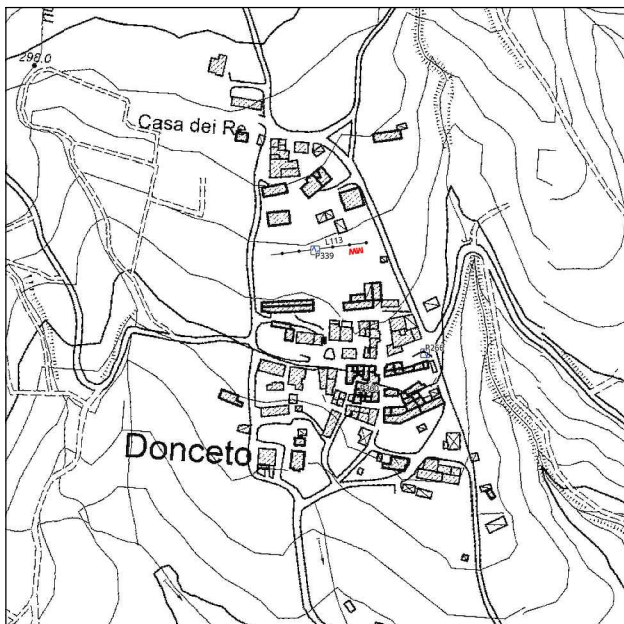
PROVA M.A.S.W. - Spettro medio



PROVA Re.Mi. - Spettro medio



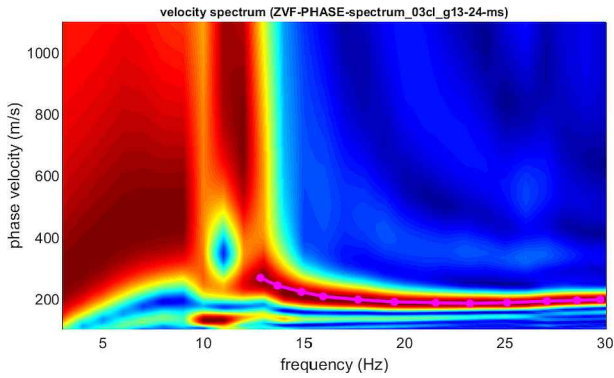
Ubicazione prova



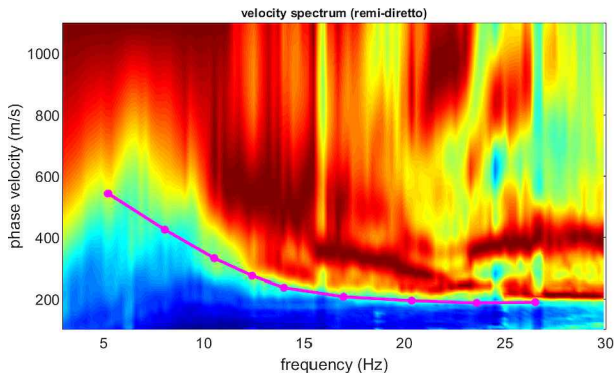
MS2 - Calzarossa - ottobre-2022

033043L112MASW123

PROVA M.A.S.W. - Spettro medio



PROVA Re.Mi. - Spettro medio



Ubicazione prova

