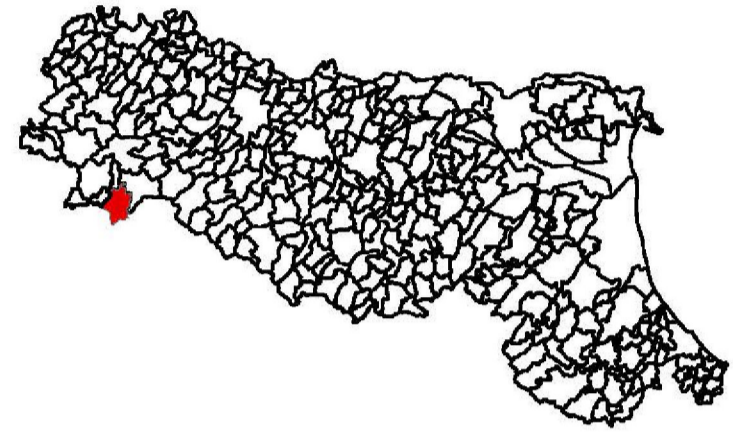


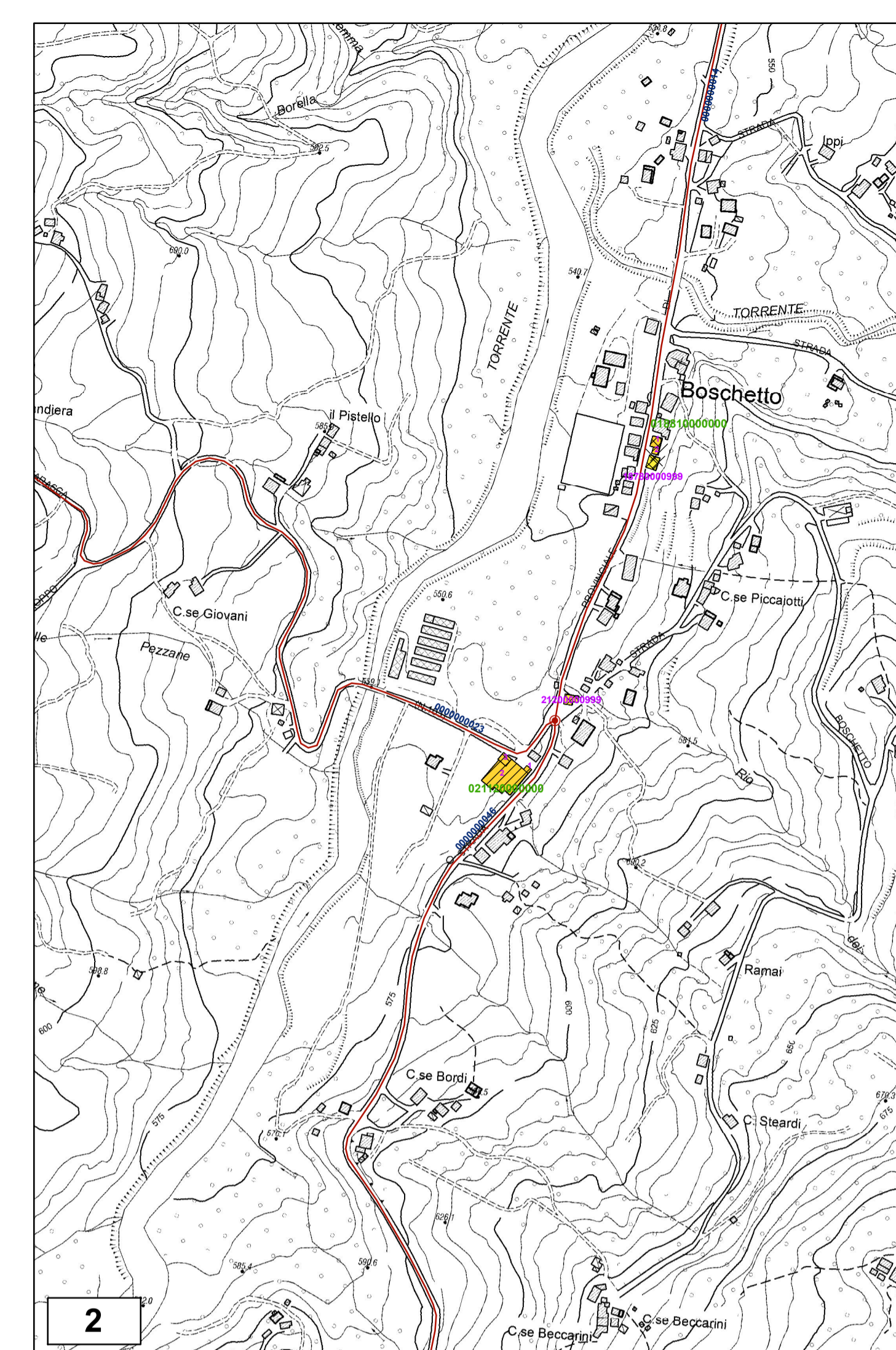
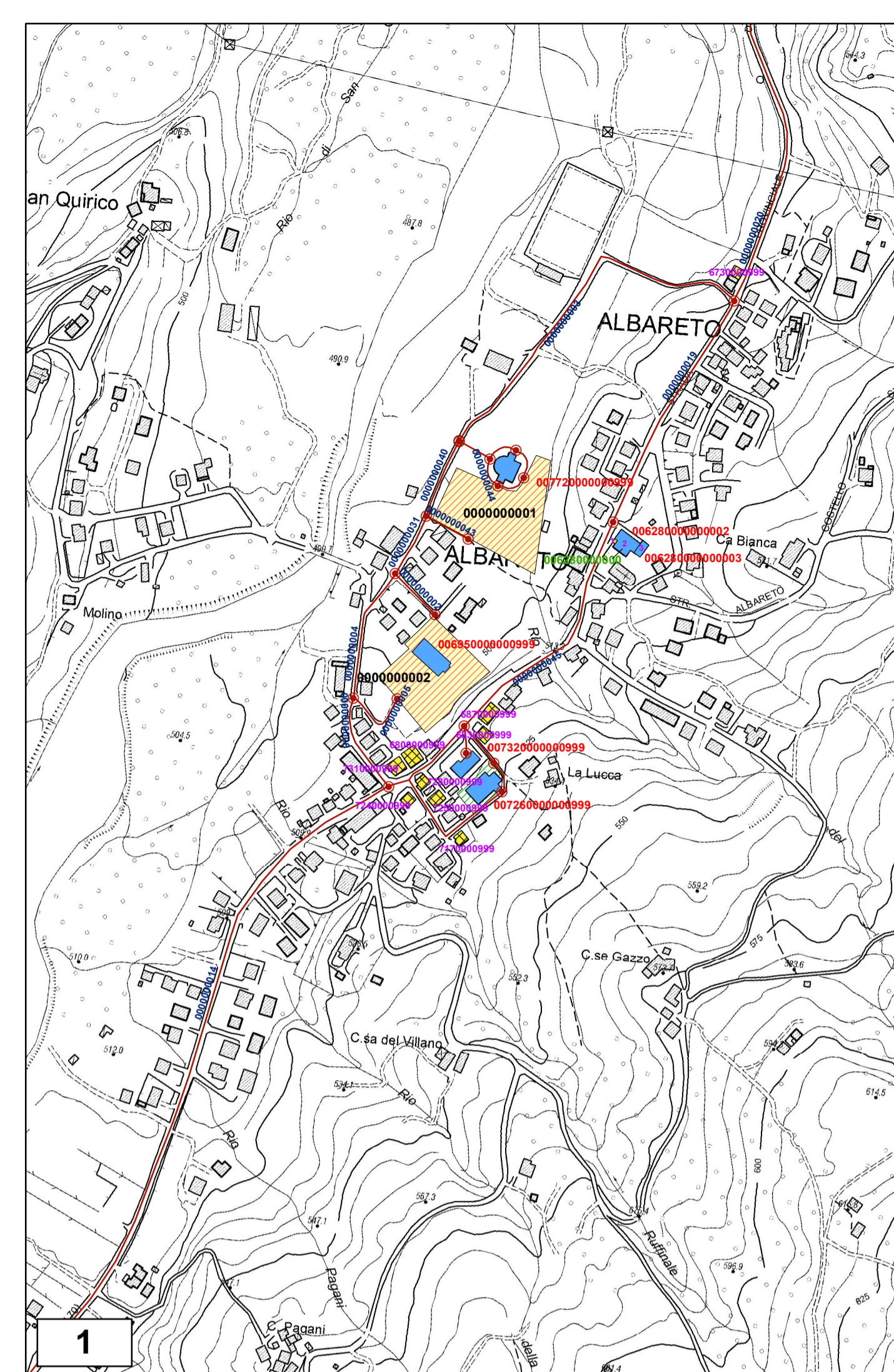
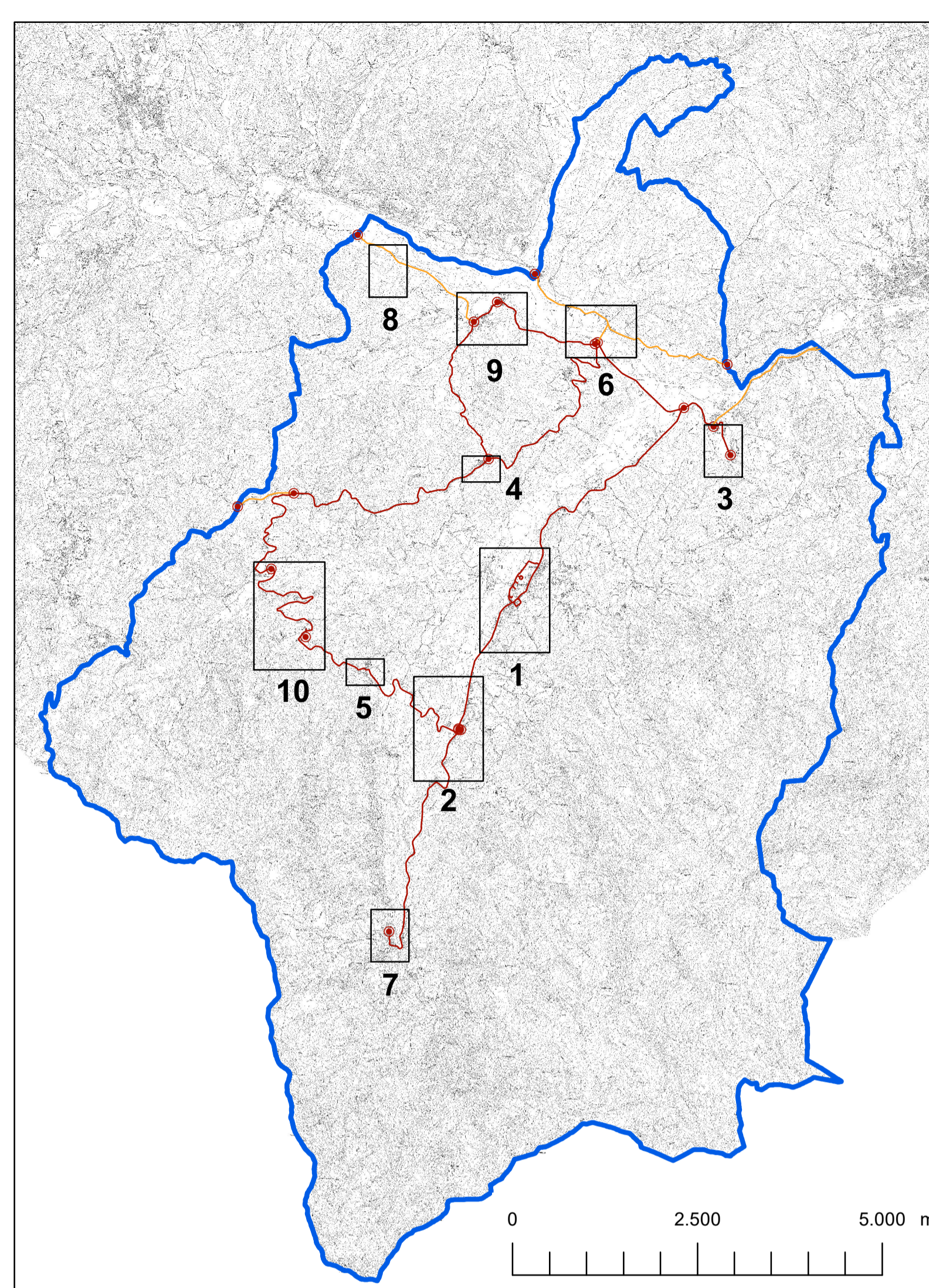
ANALISI DELLA CONDIZIONE LIMITE PER L'EMERGENZA (CLE)

Scala 1:5000

Regione Emilia – Romagna
Comune di Albareto






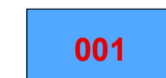



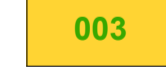


Regione: Emilia Romagna	Soggetto realizzatore: Dott. Geol. Domenico Bianco Dott. Geol. Gabriele Oppò Dott. Geol. Massimiliano Trauzzi	Data: Maggio 2018
----------------------------	--	----------------------



Legenda

Codice Provincia 034
Codice Comune 001

Sistema di gestione dell'emergenza

-  Limite comunale
-  005 Infrastruttura di accessibilità
-  006 Infrastruttura di connessione
-  001 Edificio strategico
-  002 Area di emergenza (RICOVERO + AMMASSAMENTO)
-  Area di attesa
-  003 Aggregato strutturale interferente
-  004 Unità strutturale interferente appartenente ad un AS
-  005 Unità strutturale non interferente appartenente ad un AS
-  006 Unità strutturale interferente isolata

