

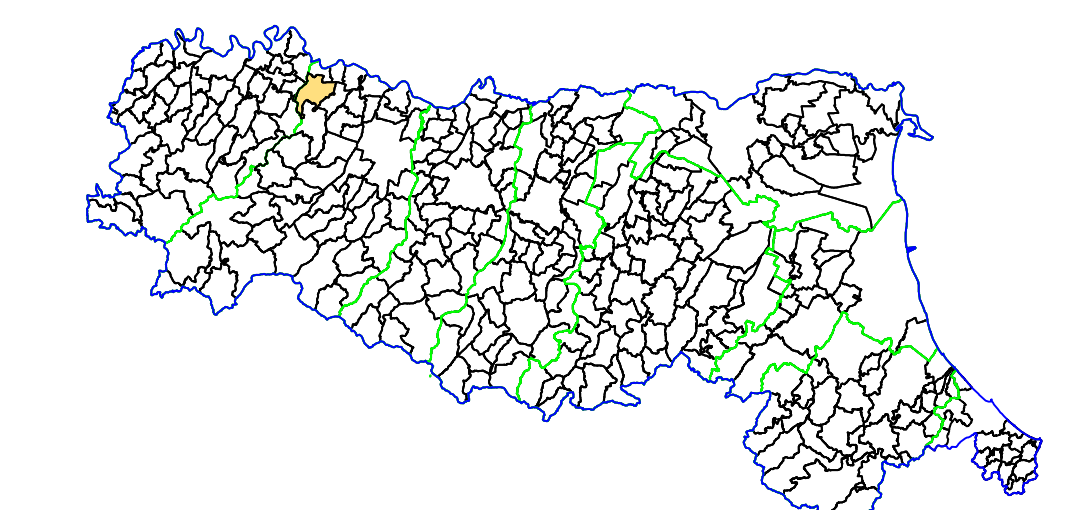
MICROZONAZIONE SISMICA

CARTA DELLE INDAGINI

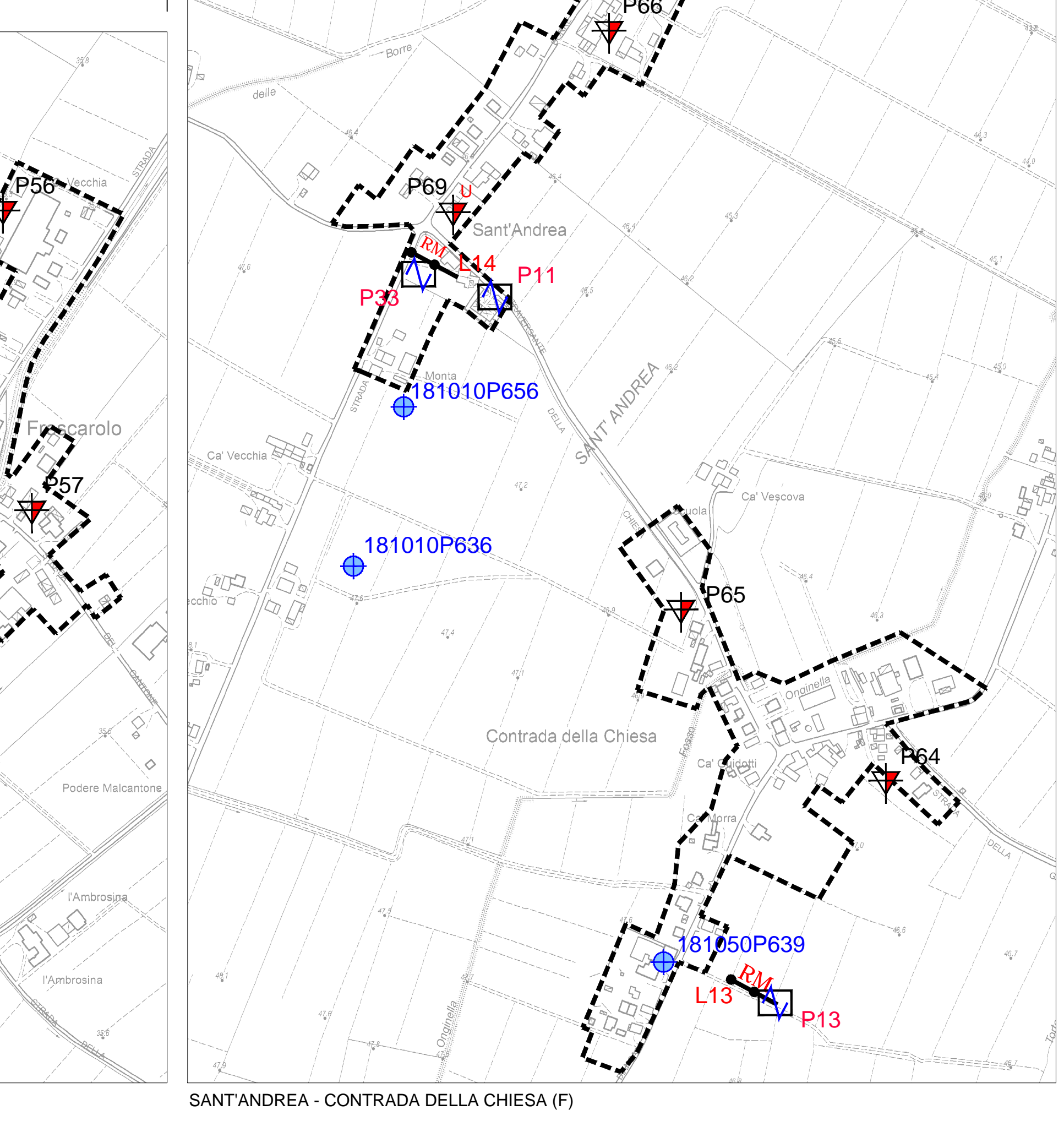
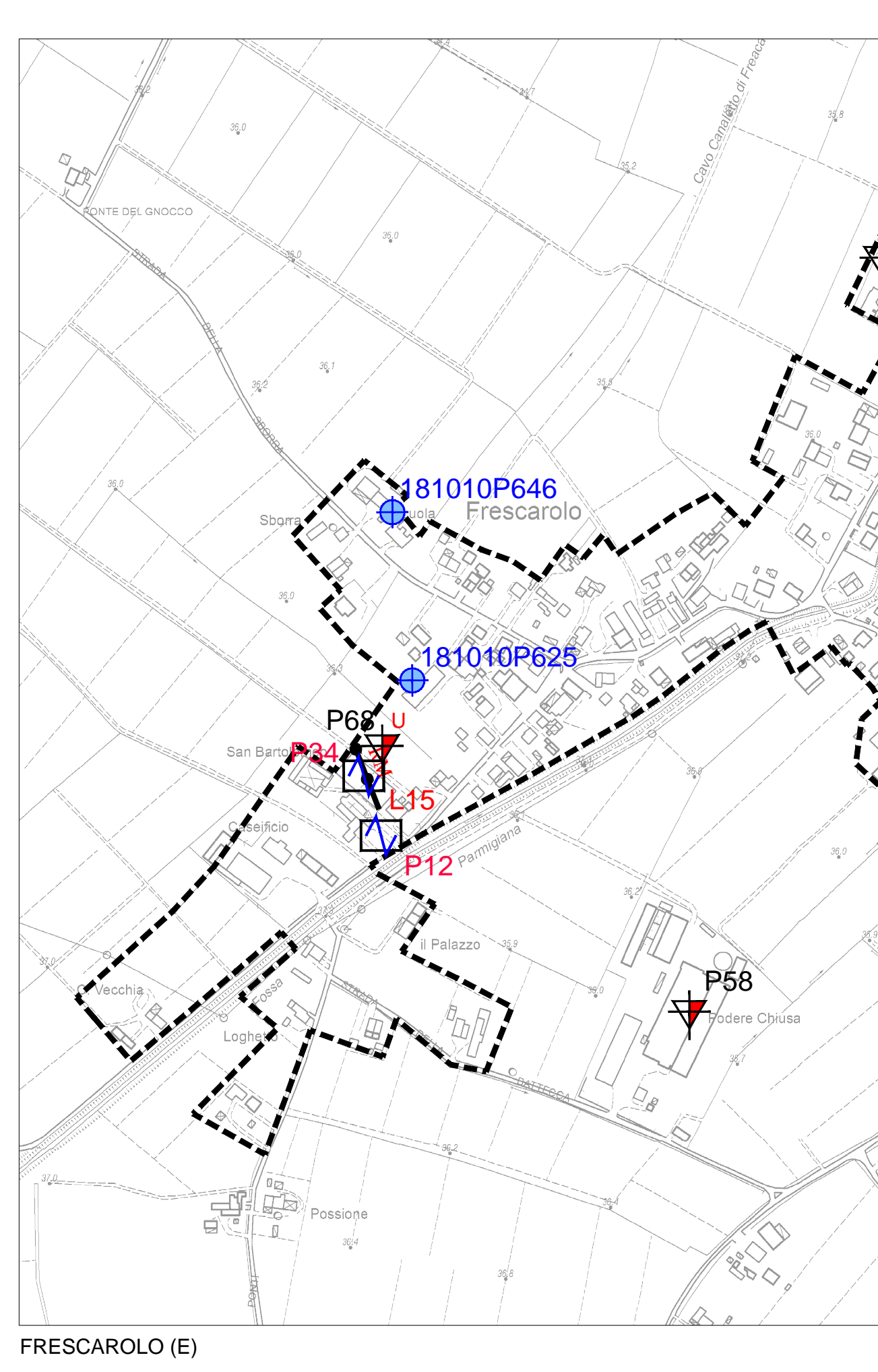
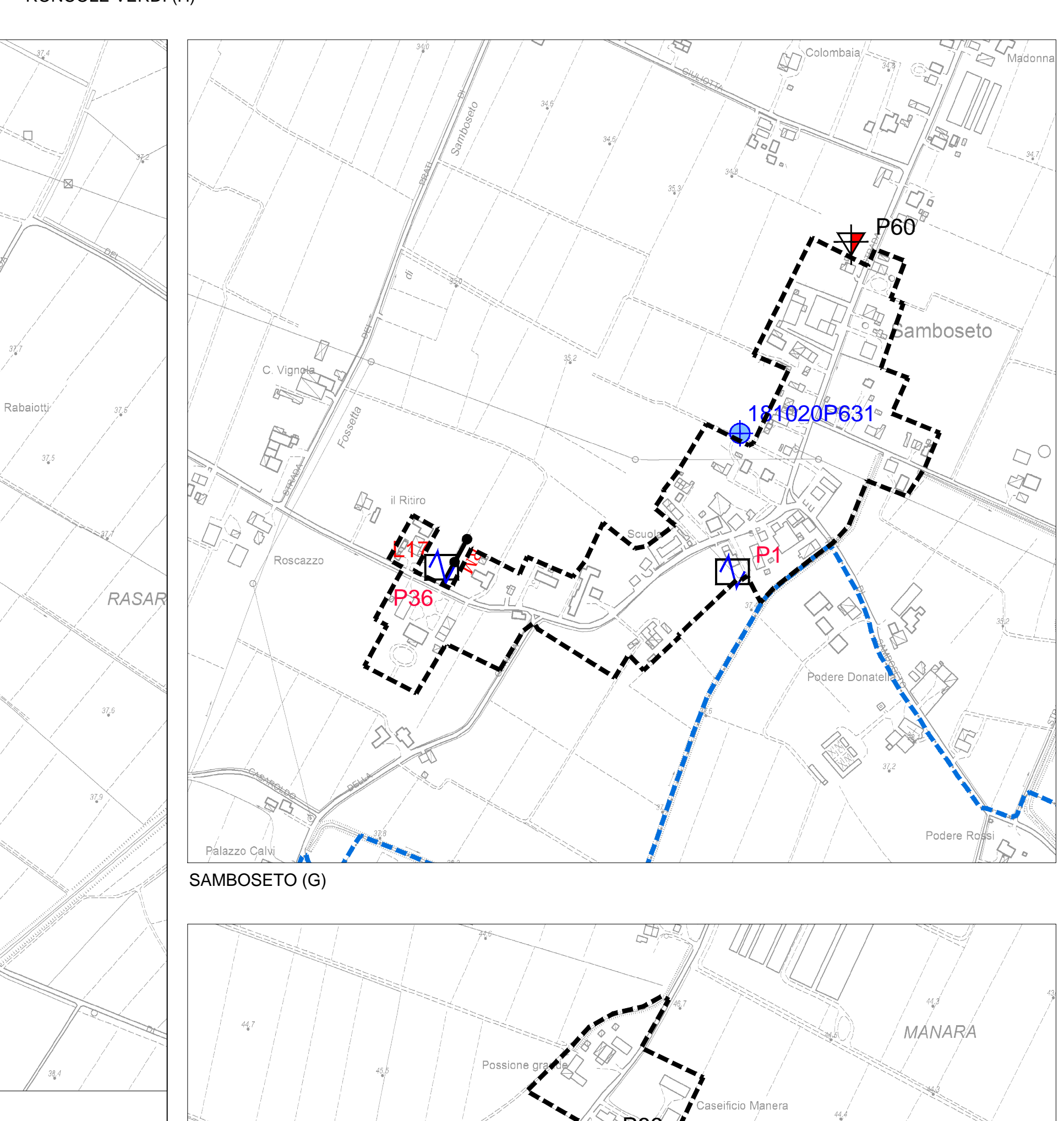
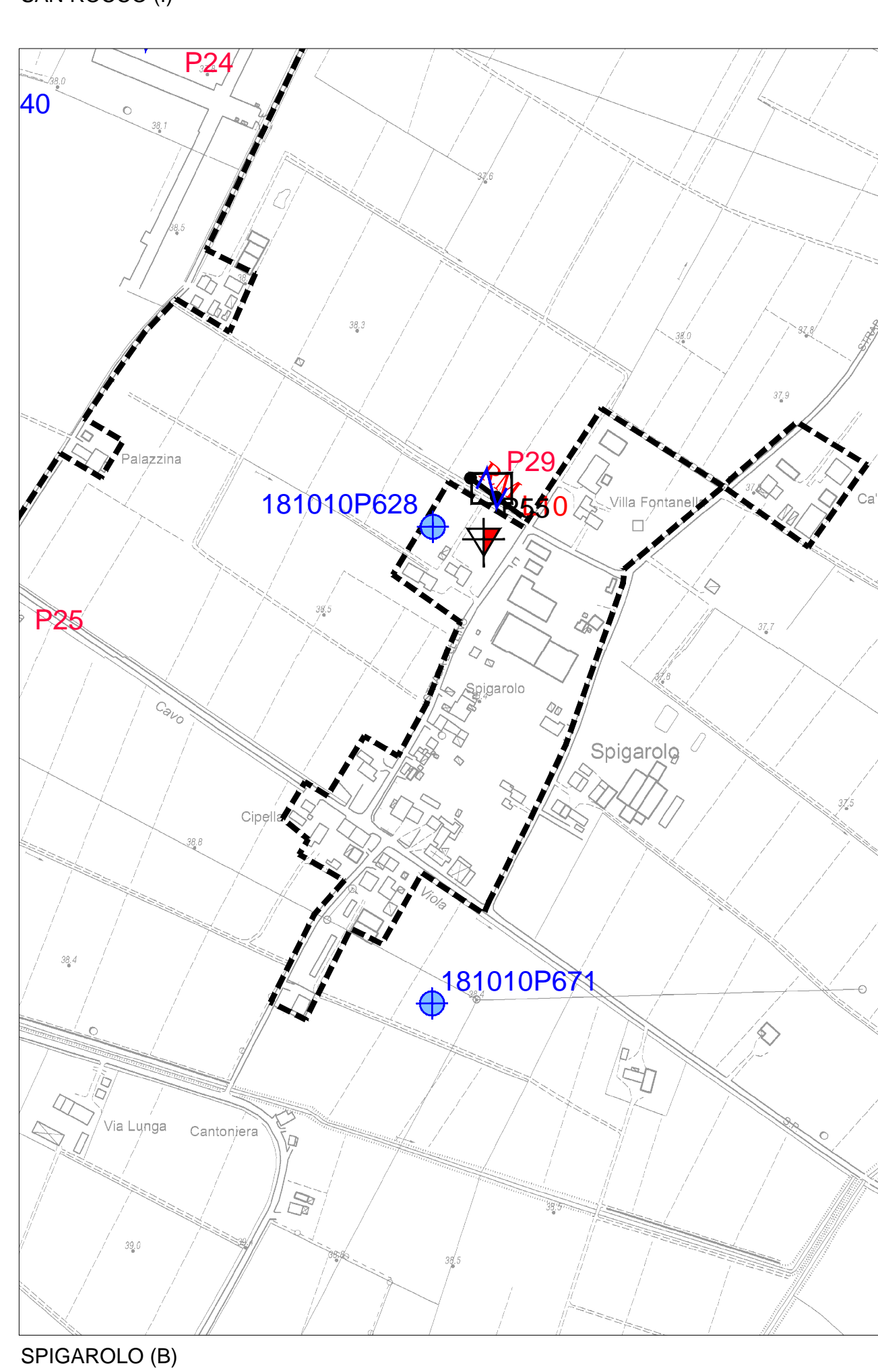
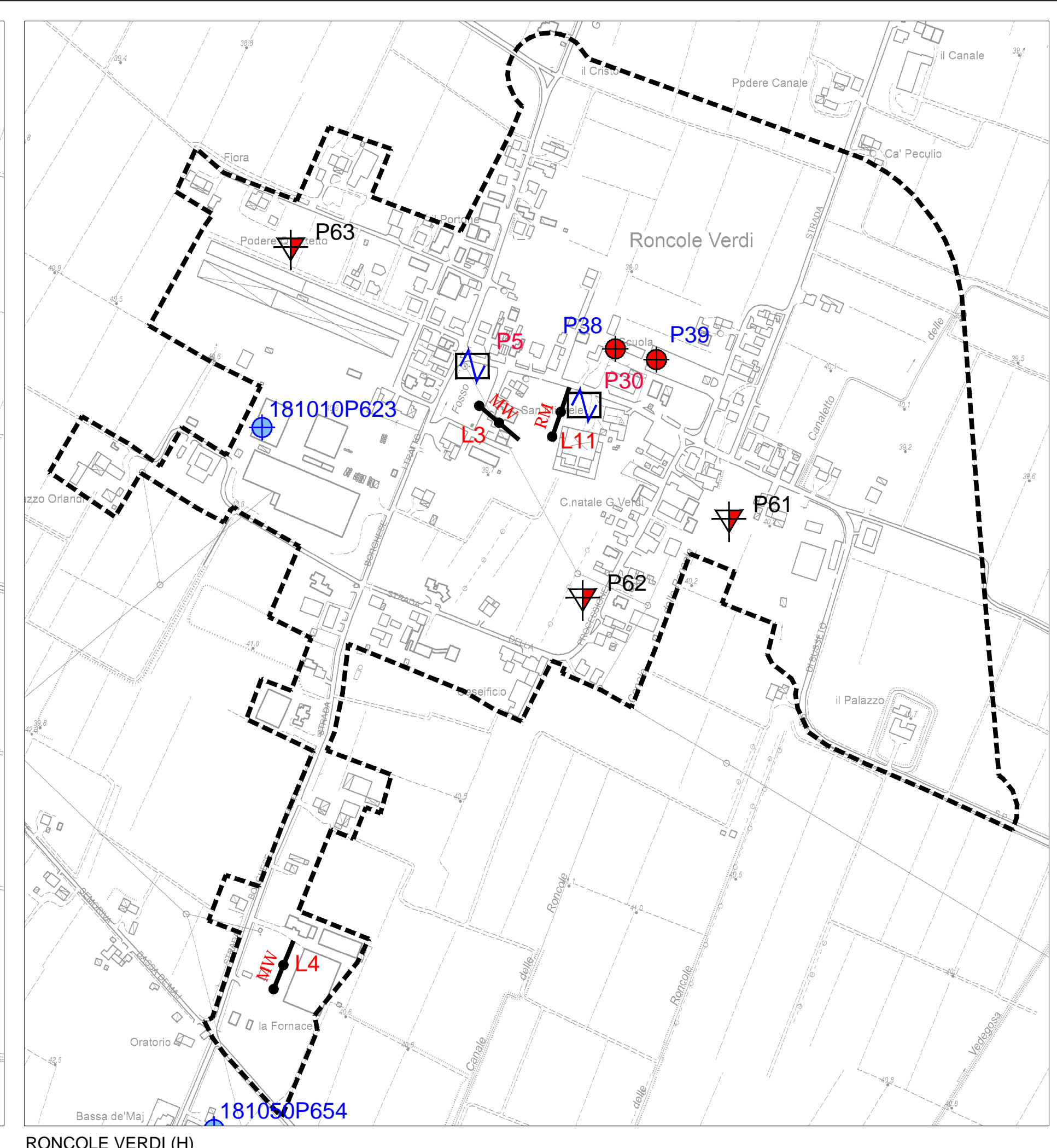
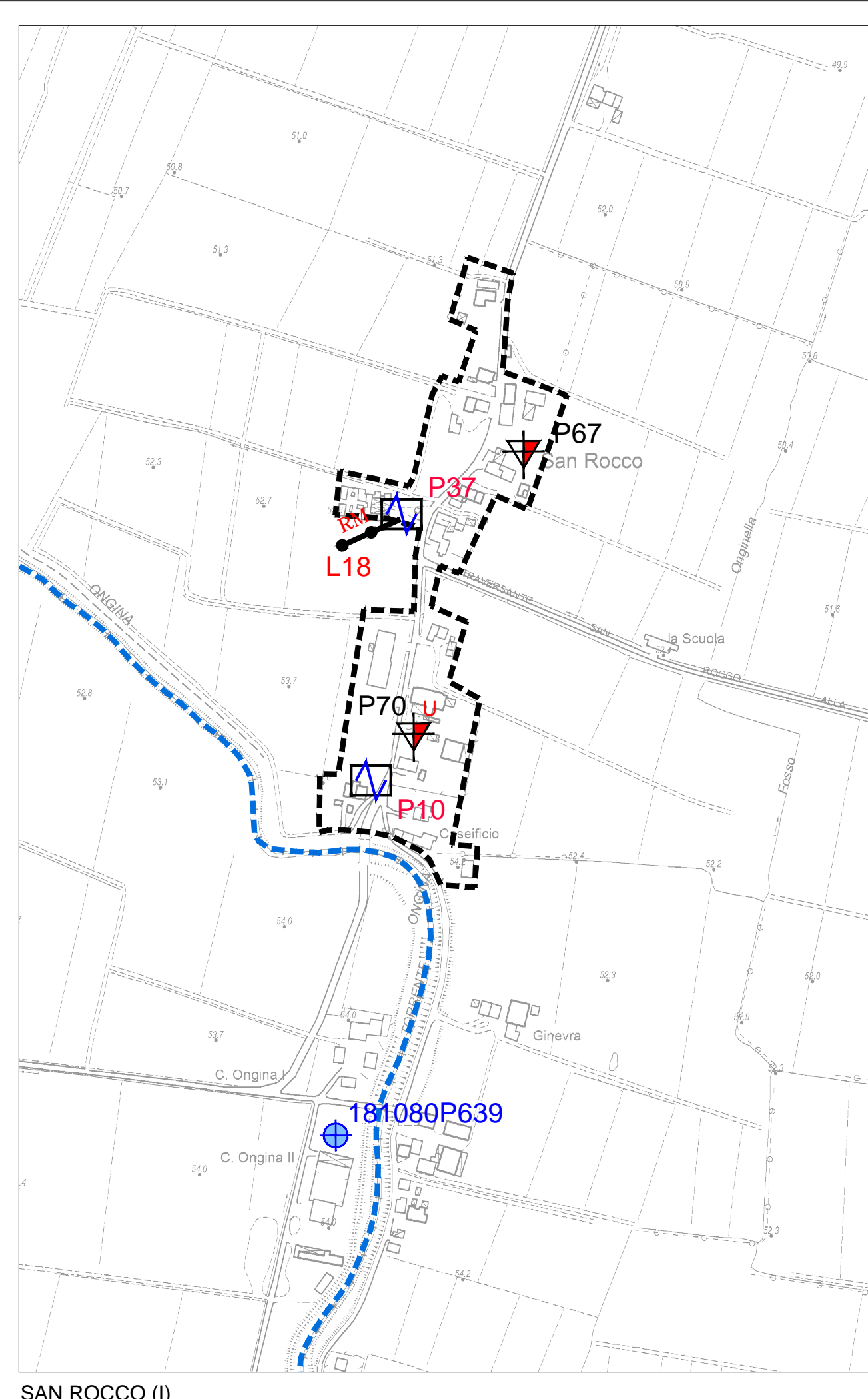
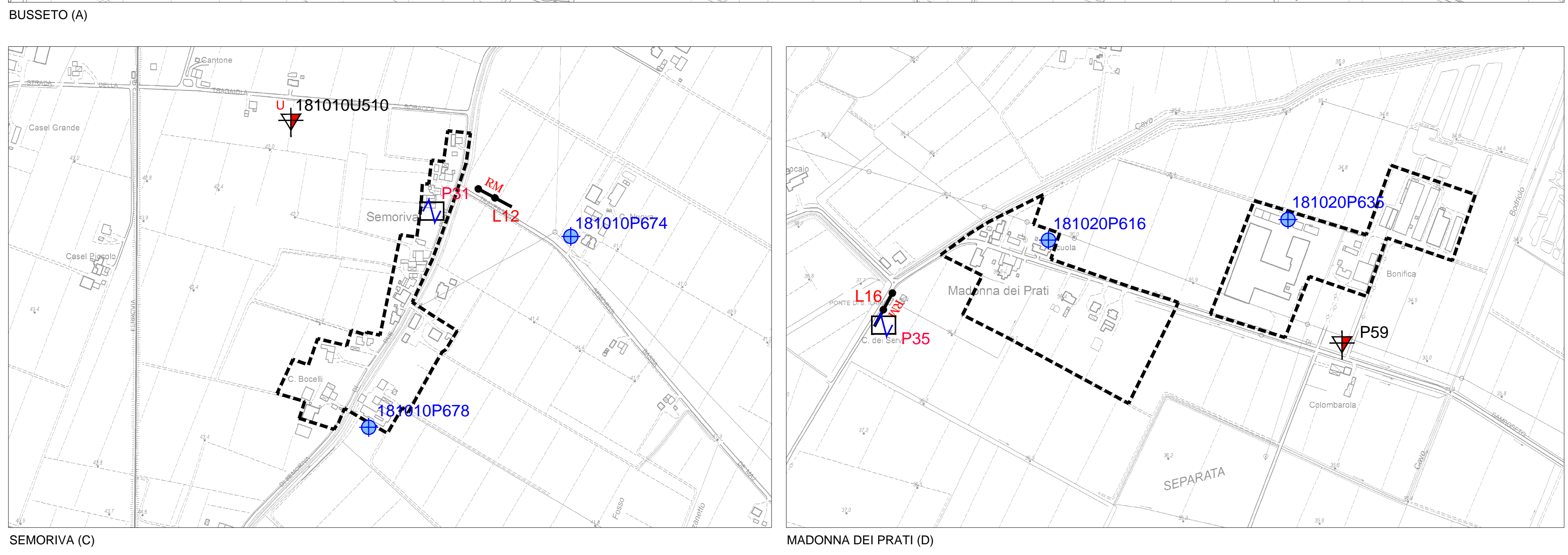
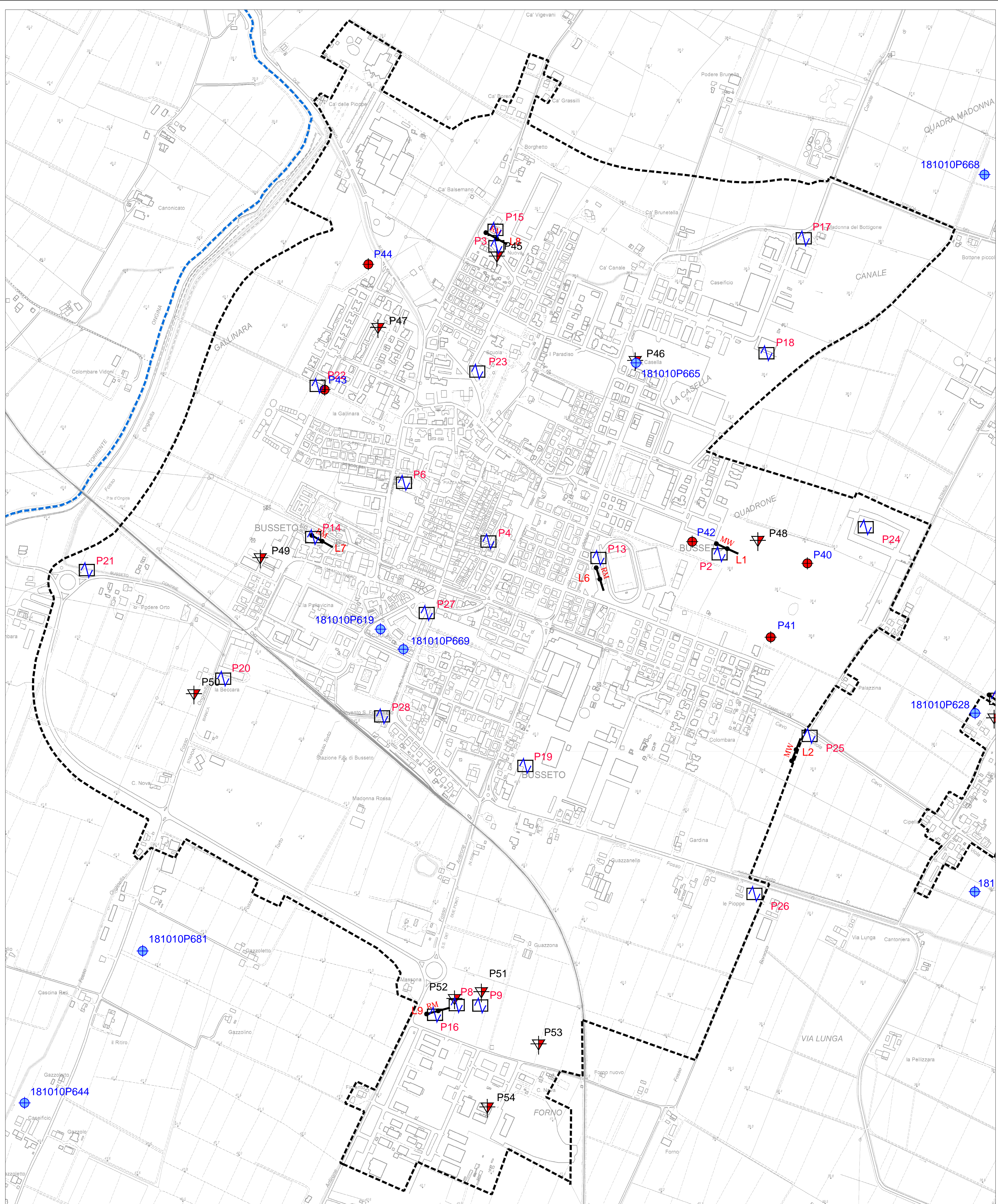
scala 1 : 5.000

TAV. 01

Regione Emilia-Romagna
Comune di Busseto



Regione	Soggetto realizzatore	Data
Emilia-Romagna	AMBITER S.r.l. Via Nisardo 5/A - 41128 Piacenza Tel. 0523-864001 - Fax 0523-864002 www.ambiter.it - PEC: ambiter@ambiter.it	ottobre 2018 (rev.2)



LEGENDA

- Indagine geofisica MASW
- Indagine geofisica ReMi
- Analisi dei microtremori HVSr
- Prova penetrometrica statica con punta meccanica CPT
- Prova penetrometrica statica con piezocono
- Prova penetrometrica dinamica super pesante
- Sondaggio a carotaggio continuo
- Pozzo per acqua
- Ambito interessato dallo studio di microzonazione sismica
- Confine comunale

