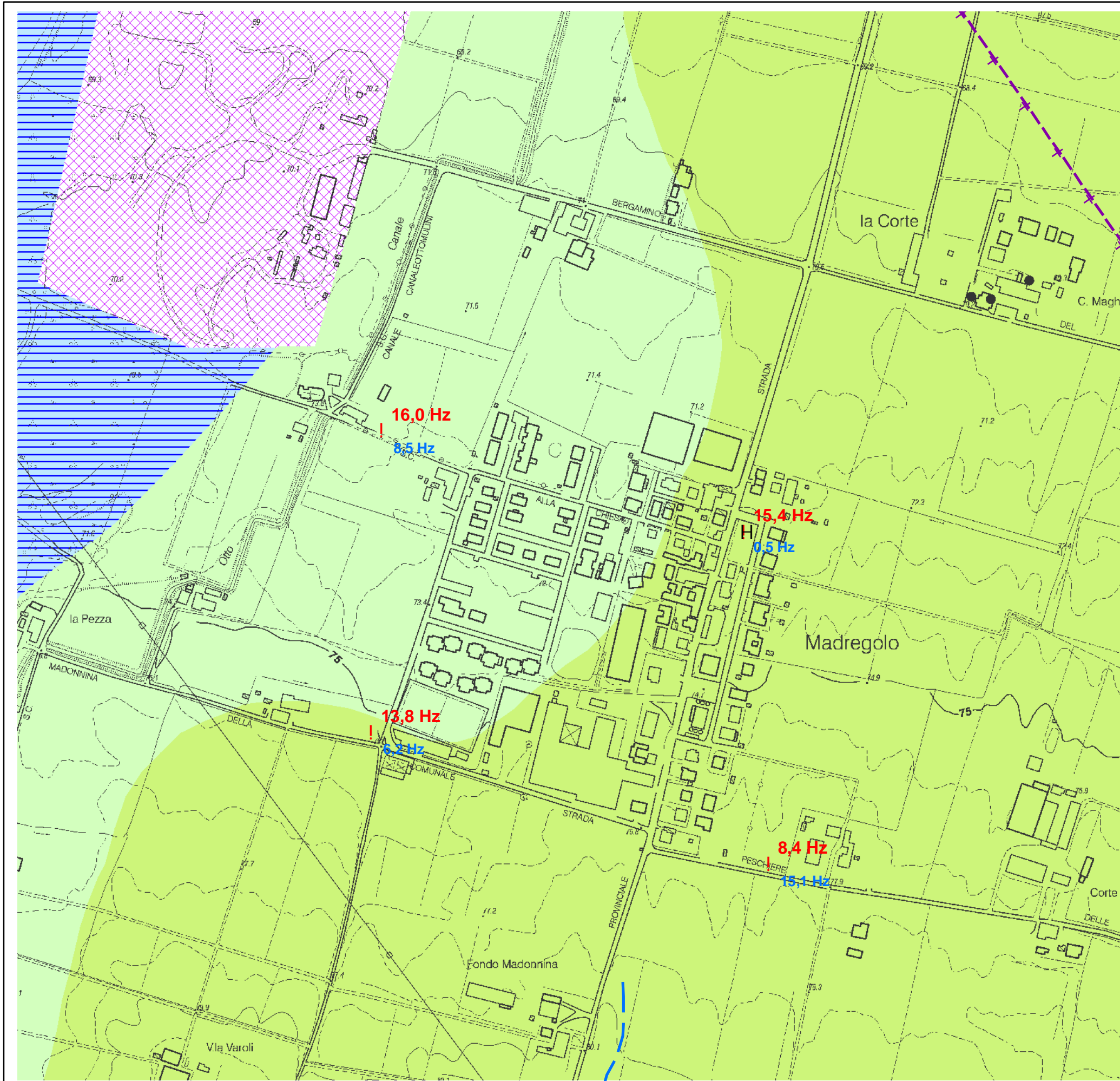


TAV. 7B CARTA DELLE FREQUENZE NATURALI DEI TERRENI



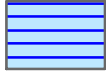
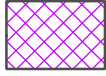
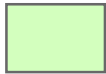



LEGENDA

FREQUENZE

frequenza picco significativo (Hz)	ampiezza picco	
	< 3	> 3
Fo < 0,5	●	H
0,5 < Fo < 1	●	H
1 < Fo < 2	●	H
2 < Fo < 3	●	H
3 < Fo < 5	●	H
5 < Fo < 8	●	H
Fo > 8	●	H

A lato del simbolo sono riportate la frequenza relative al primo picco significativo (in rosso) e al secondo picco (in blu) se presente

LITO-MORFOLOGIA

-  Deposito alluvionale in evoluzione fissato da vegetazione
-  Deposito antropico
-  Sintema Emiliano-Romagnolo Sup. Subsintema di Ravenna - Unità di Modena
-  Sintema Emiliano-Romagnolo Sup. Subsintema di Ravenna
-  Sovrascorrimento principale sepolto
-  Traccia di alveo fluviale abbandonato

0 100 200 400
Meters