



PROTEZIONE CIVILE
Presidenza del Consiglio dei Ministri
Dipartimento della Protezione Civile



CONFERENZA DELLE REGIONI E
DELLE PROVINCE AUTONOME

Attuazione dell'articolo 11 della legge 24 giugno 2009, n. 77

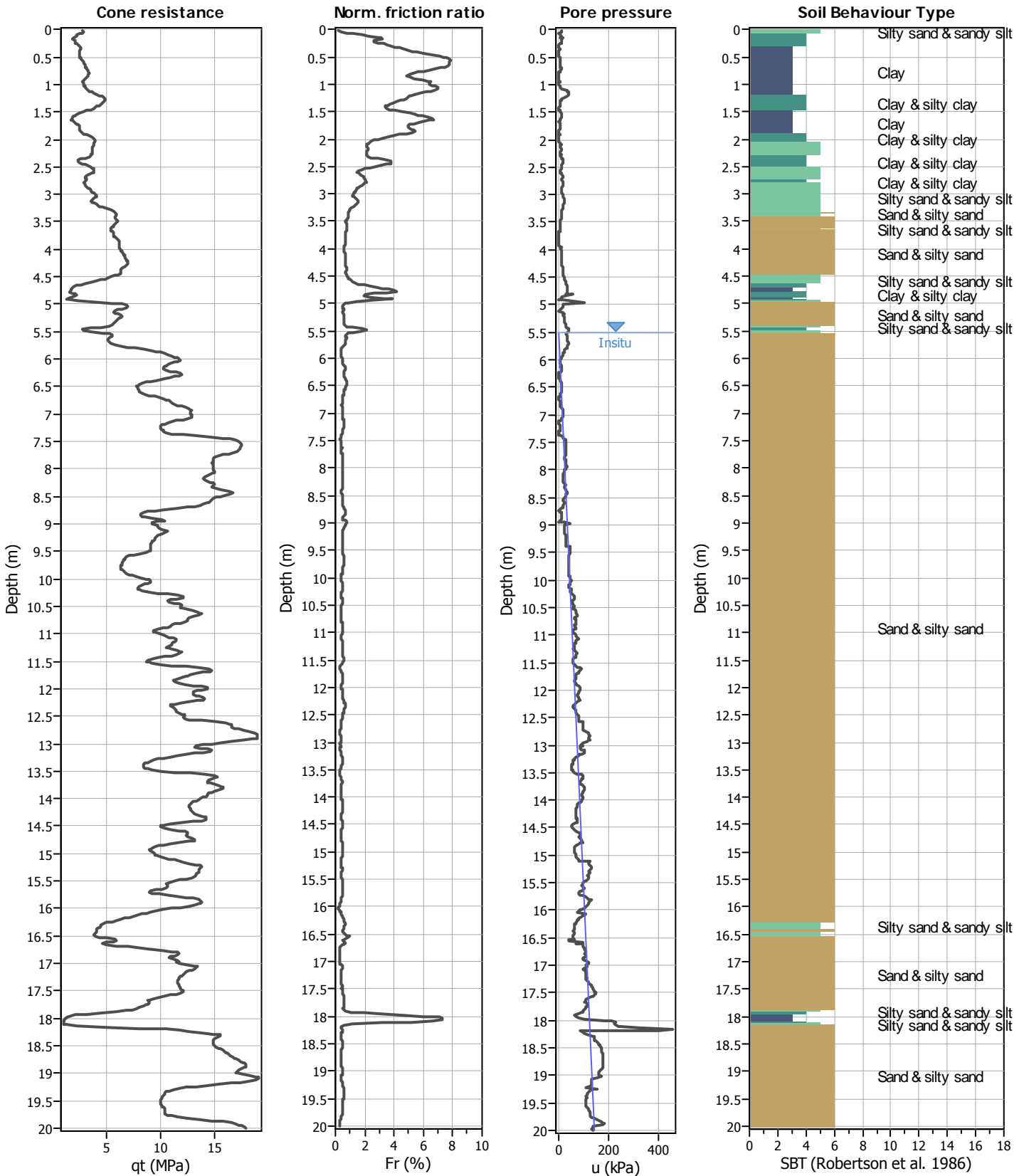
MICROZONAZIONE SISMICA

Verifiche del rischio di liquefazione

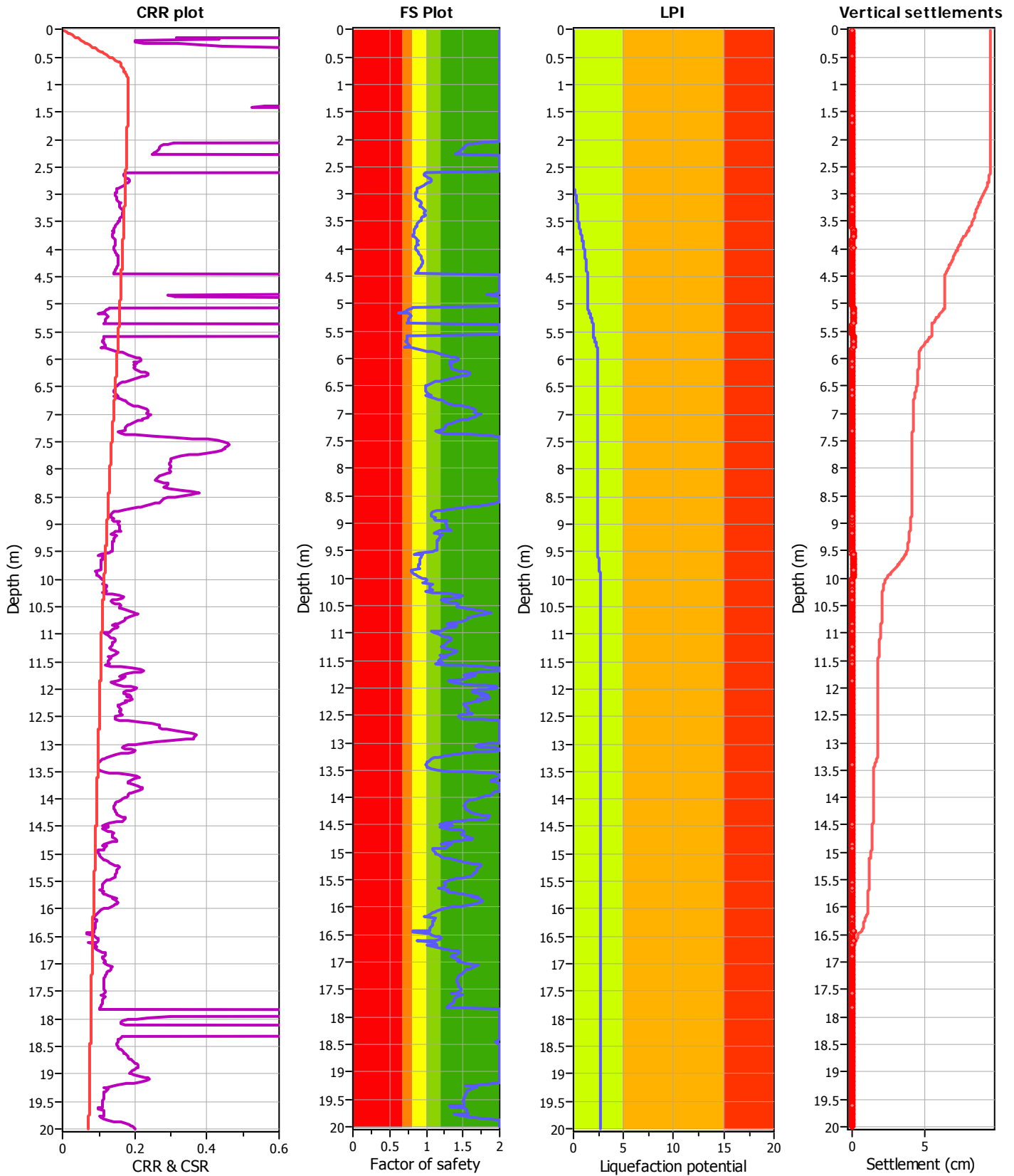
Regione Emilia – Romagna
Comune di Colorno



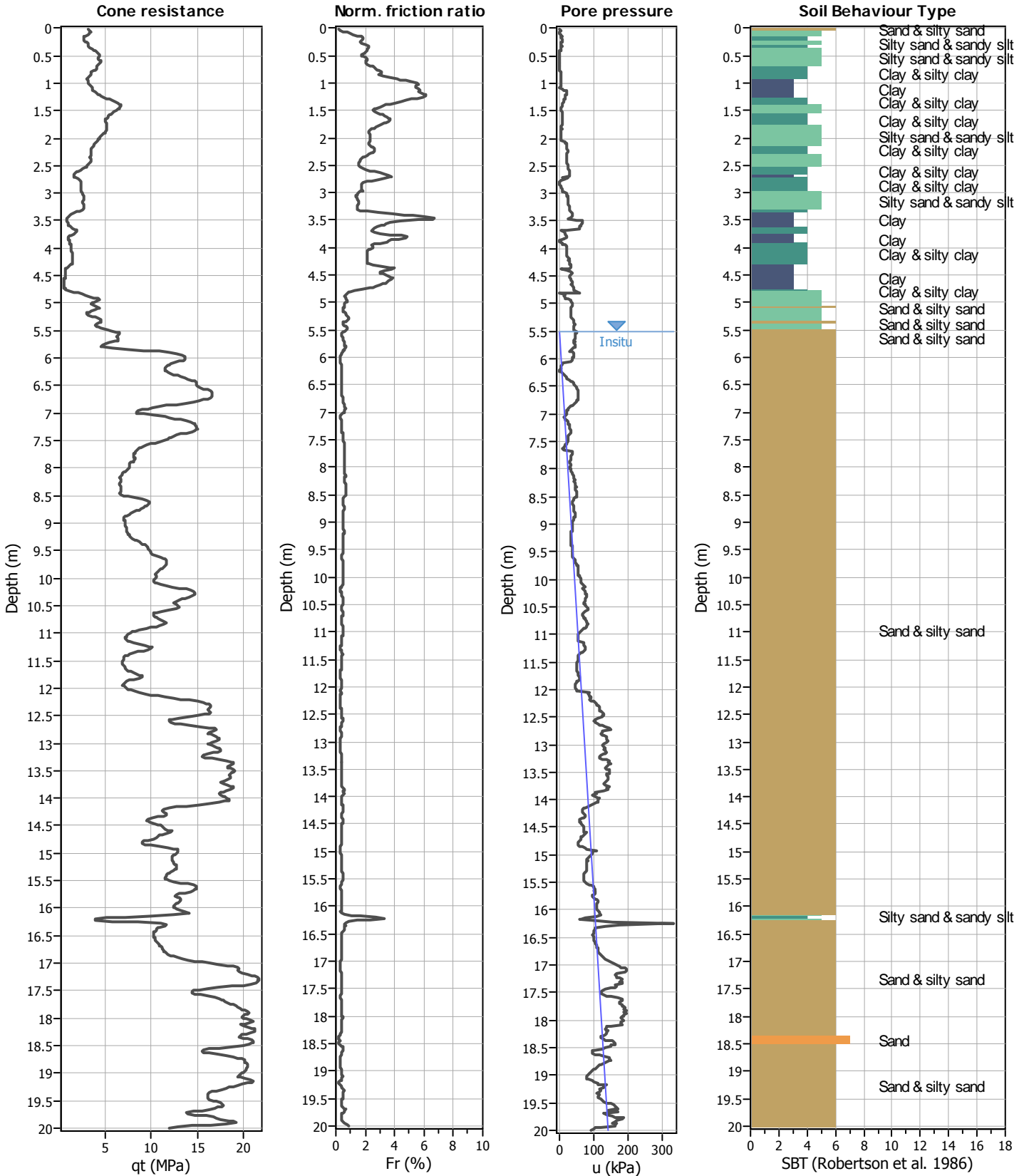
Regione	Soggetto realizzatore	Data
Emilia Romagna	Dott. Geol. Domenico Bianco	Dicembre 2016



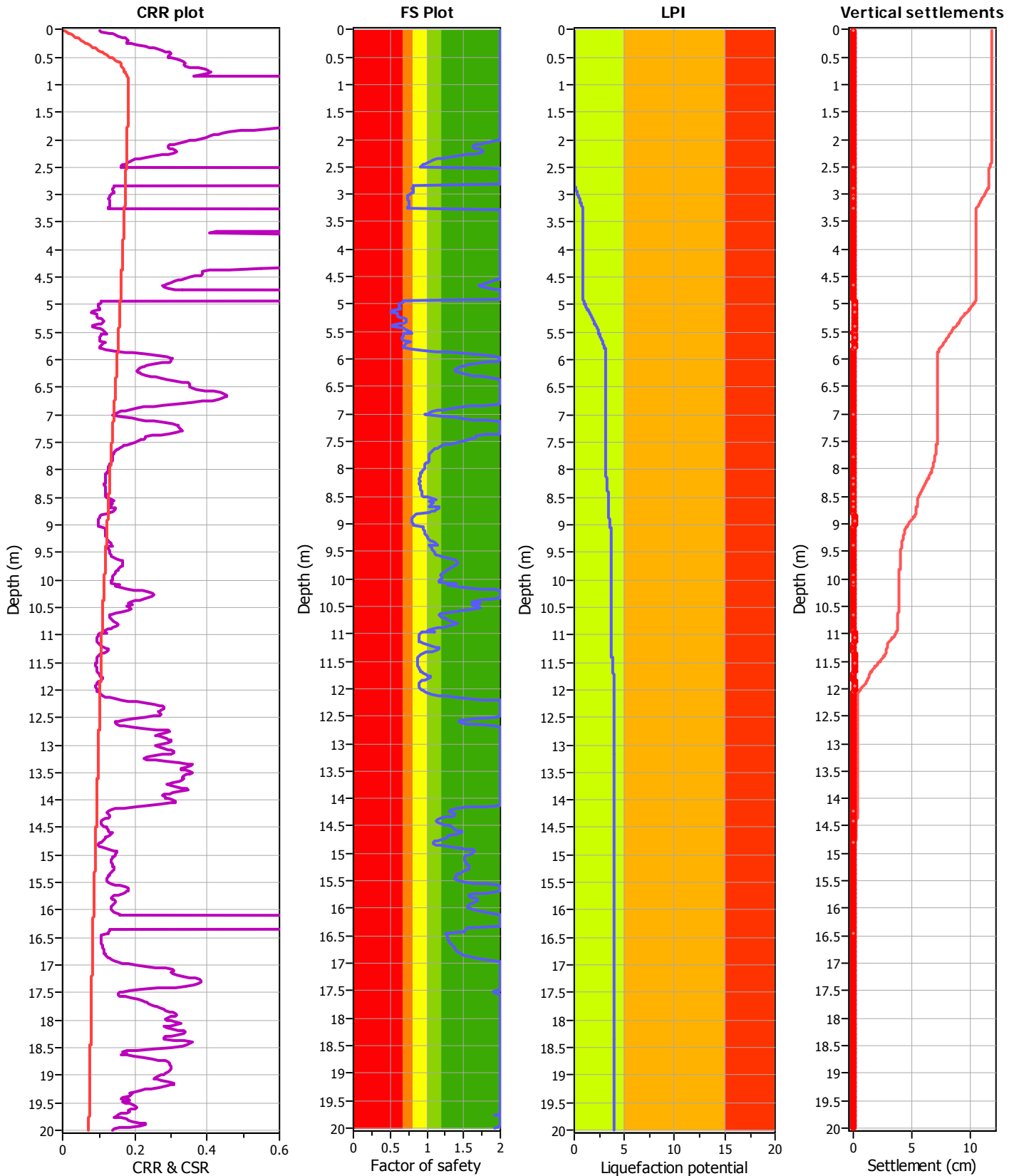
Analysis method:	Robertson (2009)	G.W.T. (in-situ):	5.50 m	Use fill:	No	Clay like behavior	
Fines correction method:	Robertson (2009)	G.W.T. (earthq.):	0.00 m	Fill height:	N/A	applied:	All soils
Points to test:	Based on Ic value	Average results interval:	3	Fill weight:	N/A	Limit depth applied:	Yes
Earthquake magnitude M_w :	5.99	Ic cut-off value:	2.60	Trans. detect. applied:	Yes	Limit depth:	20.00 m
Peak ground acceleration:	0.14	Unit weight calculation:	Based on SBT	K_0 applied:	No	MSF method:	Method based



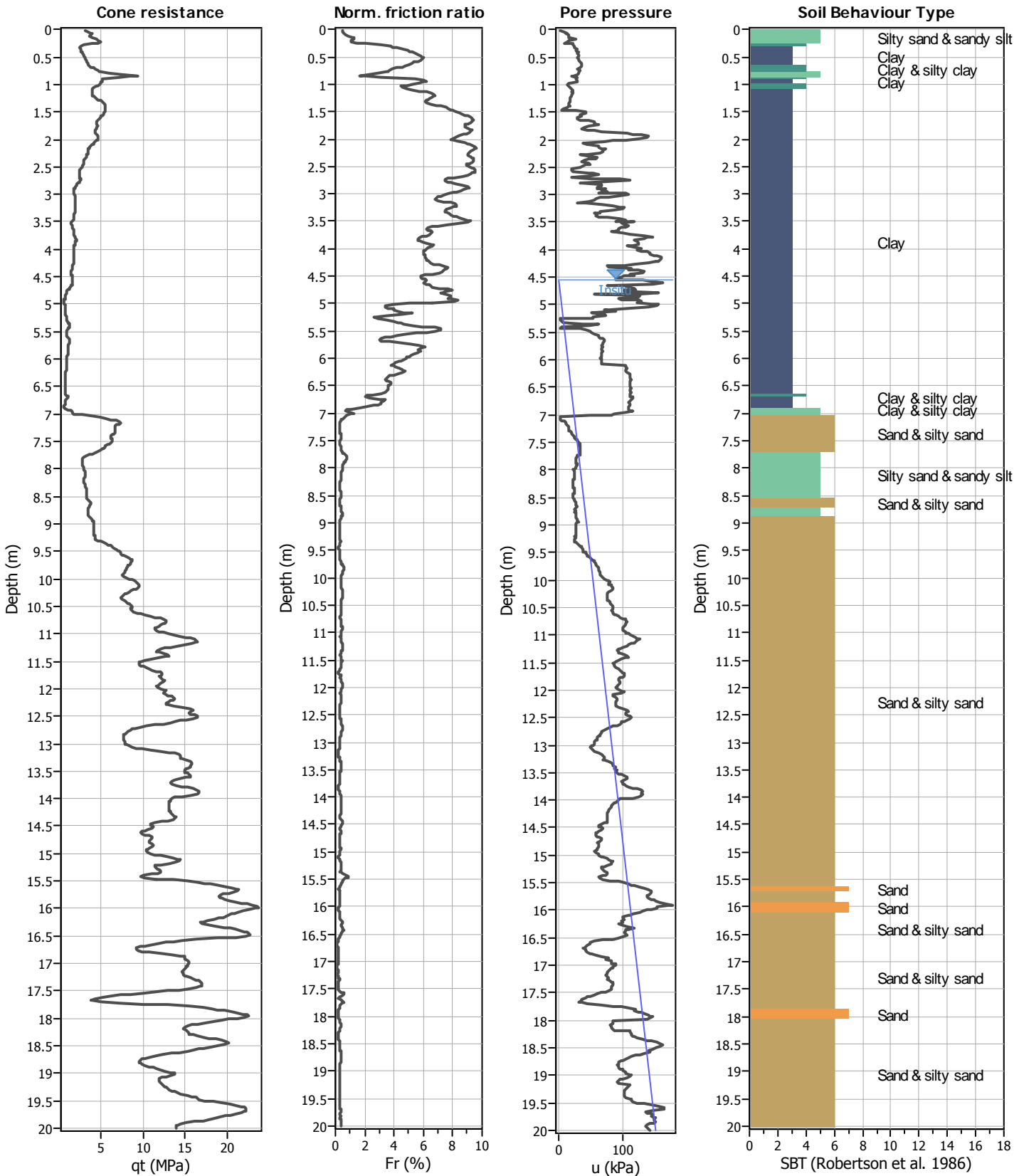
Analysis method:	Robertson (2009)	G.W.T. (in-situ):	5.50 m	Use fill:	No	Clay like behavior	
Fines correction method:	Robertson (2009)	G.W.T. (earthq.):	0.00 m	Fill height:	N/A	applied:	All soils
Points to test:	Based on Ic value	Average results interval:	3	Fill weight:	N/A	Limit depth applied:	Yes
Earthquake magnitude M_w :	5.99	Ic cut-off value:	2.60	Trans. detect. applied:	Yes	Limit depth:	20.00 m
Peak ground acceleration:	0.14	Unit weight calculation:	Based on SBT	K_s applied:	No	MSF method:	Method based



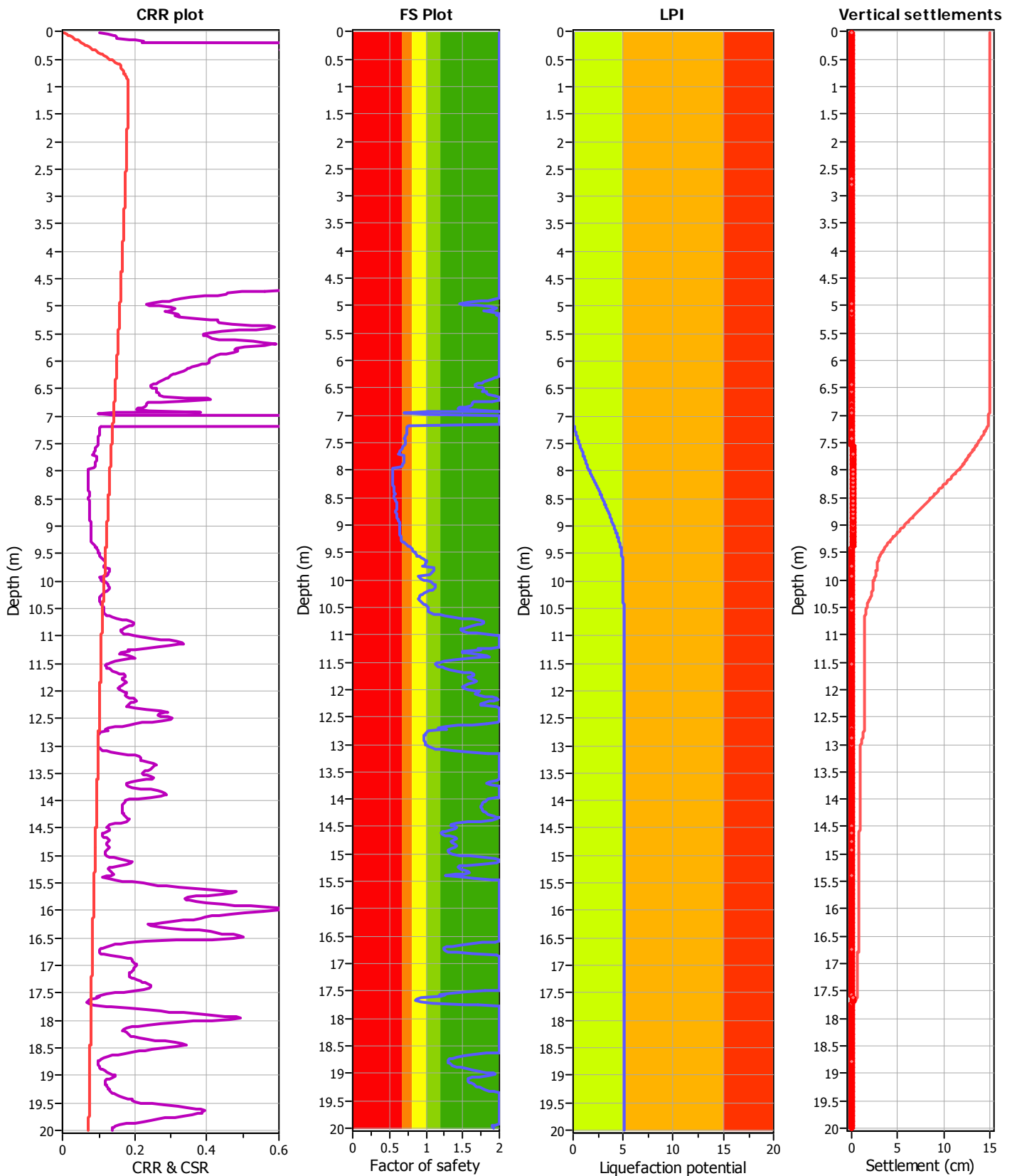
Analysis method:	Robertson (2009)	G.W.T. (in-situ):	5.50 m	Use fill:	No	Clay like behavior	
Fines correction method:	Robertson (2009)	G.W.T. (earthq.):	0.00 m	Fill height:	N/A	applied:	All soils
Points to test:	Based on Ic value	Average results interval:	3	Fill weight:	N/A	Limit depth applied:	Yes
Earthquake magnitude M_w :	5.99	Ic cut-off value:	2.60	Trans. detect. applied:	Yes	Limit depth:	20.00 m
Peak ground acceleration:	0.14	Unit weight calculation:	Based on SBT	K_0 applied:	No	MSF method:	Method based



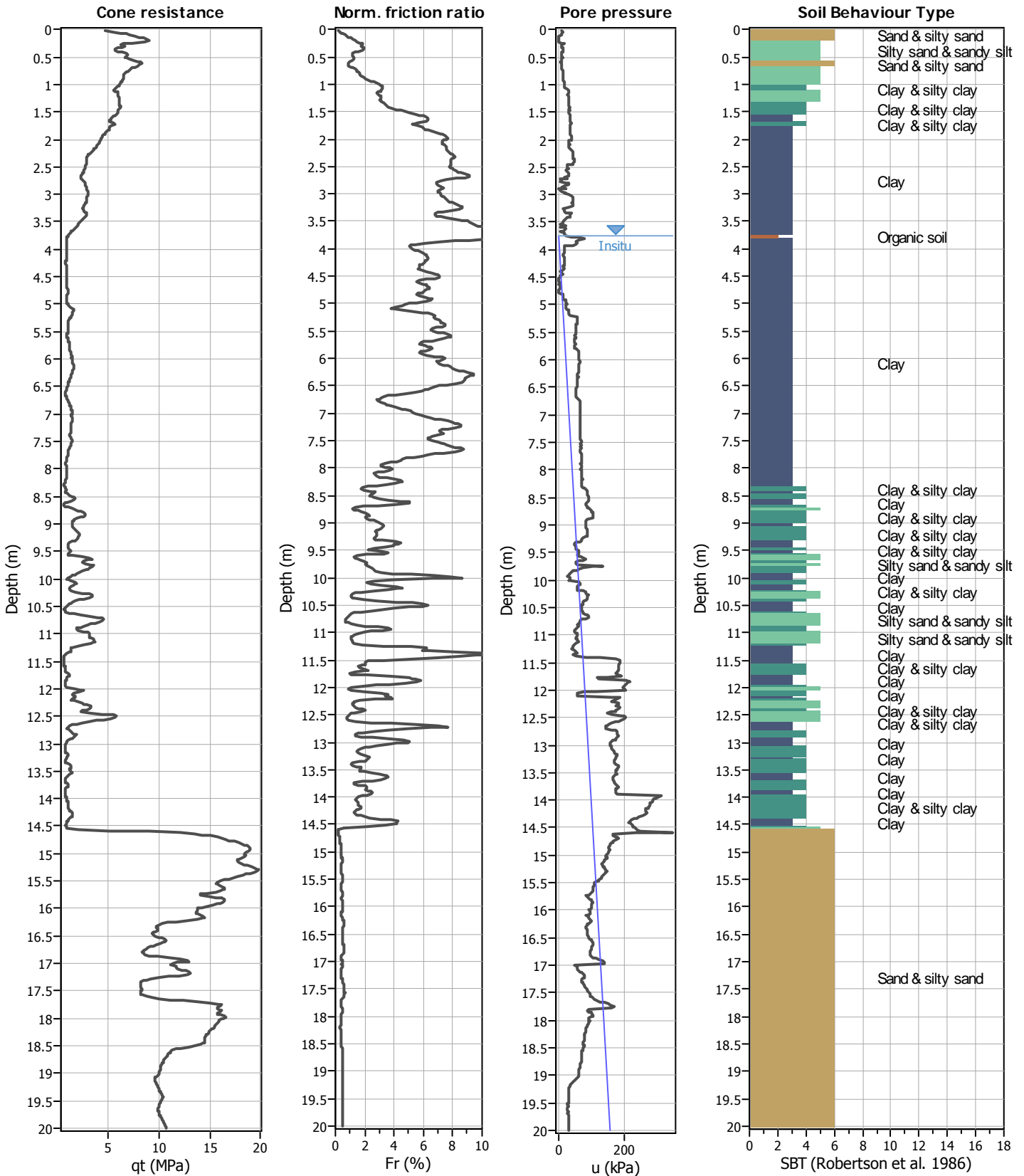
Analysis method:	Robertson (2009)	G.W.T. (in-situ):	5.50 m	Use fill:	No	Clay like behavior	
Fines correction method:	Robertson (2009)	G.W.T. (earthq.):	0.00 m	Fill height:	N/A	applied:	All soils
Points to test:	Based on Ic value	Average results interval:	3	Fill weight:	N/A	Limit depth applied:	Yes
Earthquake magnitude M_w :	5.99	Ic cut-off value:	2.60	Trans. detect. applied:	Yes	Limit depth:	20.00 m
Peak ground acceleration:	0.14	Unit weight calculation:	Based on SBT	K_s applied:	No	MSF method:	Method based



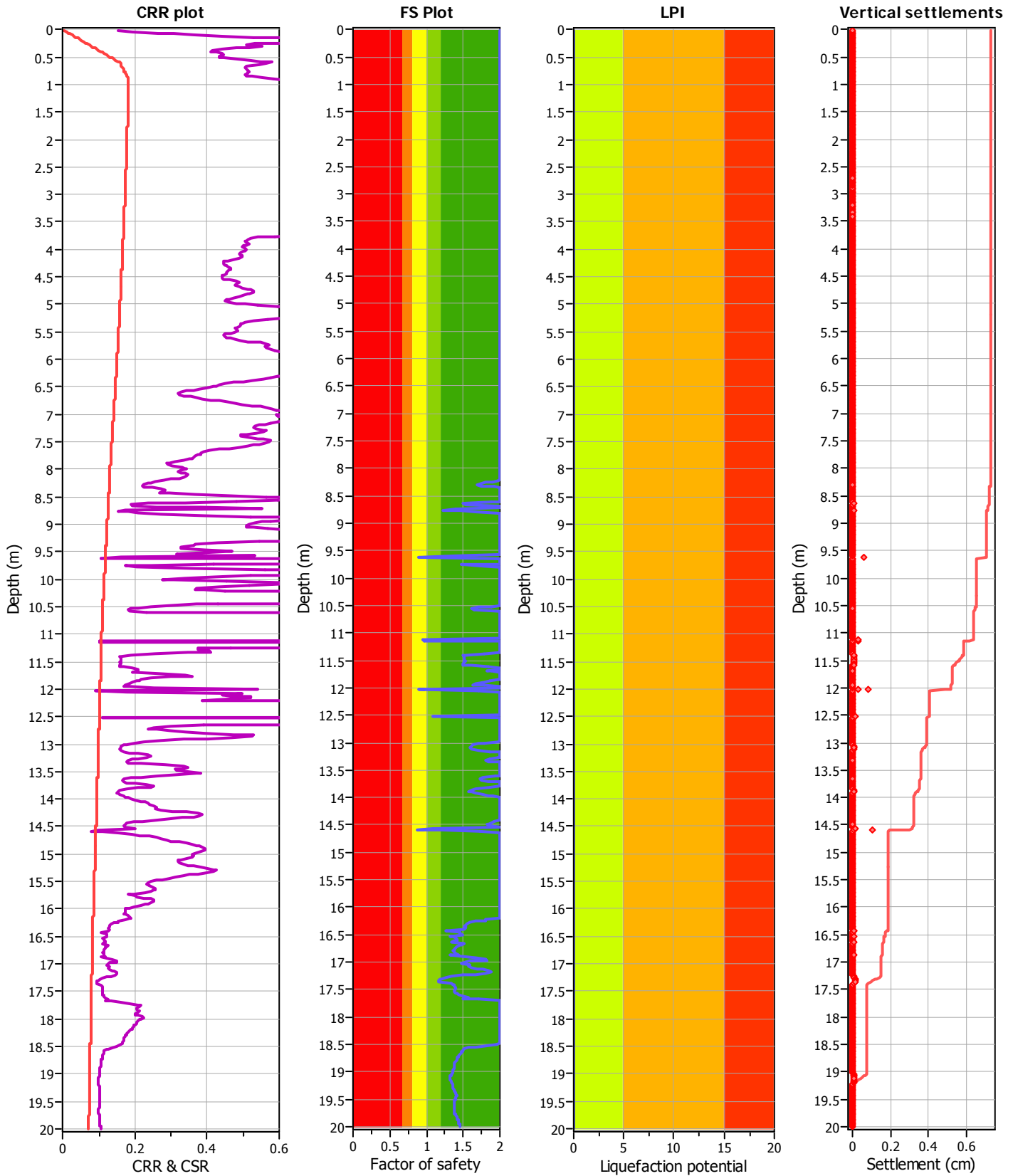
Analysis method:	Robertson (2009)	G.W.T. (in-situ):	4.55 m	Use fill:	No	Clay like behavior	
Fines correction method:	Robertson (2009)	G.W.T. (earthq.):	0.00 m	Fill height:	N/A	applied:	All soils
Points to test:	Based on Ic value	Average results interval:	3	Fill weight:	N/A	Limit depth applied:	Yes
Earthquake magnitude M_w :	5.99	Ic cut-off value:	2.60	Trans. detect. applied:	Yes	Limit depth:	20.00 m
Peak ground acceleration:	0.14	Unit weight calculation:	Based on SBT	K_0 applied:	No	MSF method:	Method based



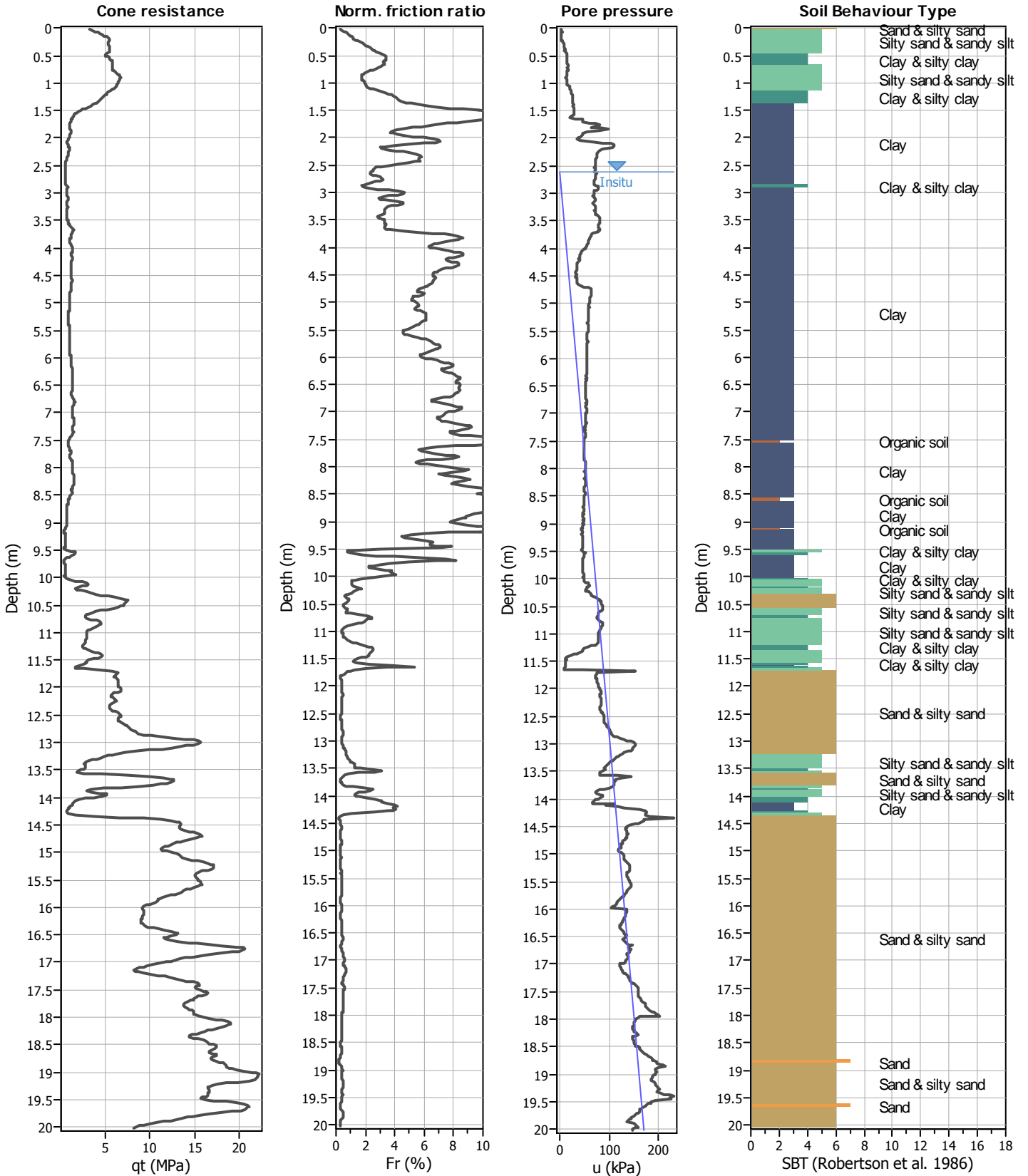
Analysis method:	Robertson (2009)	G.W.T. (in-situ):	4.55 m	Use fill:	No	Clay like behavior	
Fines correction method:	Robertson (2009)	G.W.T. (earthq.):	0.00 m	Fill height:	N/A	applied:	All soils
Points to test:	Based on Ic value	Average results interval:	3	Fill weight:	N/A	Limit depth applied:	Yes
Earthquake magnitude M_w :	5.99	Ic cut-off value:	2.60	Trans. detect. applied:	Yes	Limit depth:	20.00 m
Peak ground acceleration:	0.14	Unit weight calculation:	Based on SBT	K_s applied:	No	MSF method:	Method based



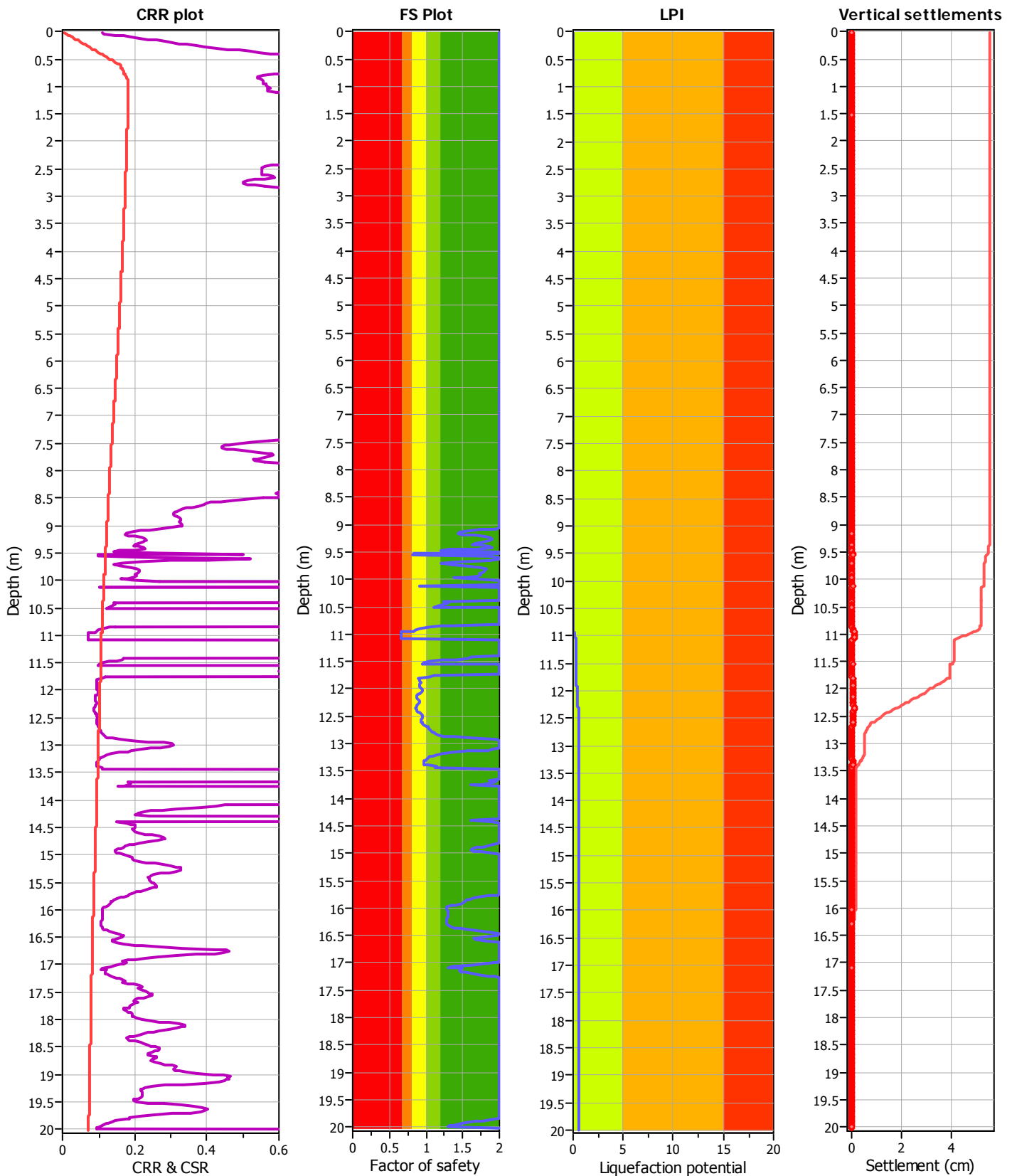
Analysis method:	Robertson (2009)	G.W.T. (in-situ):	3.75 m	Use fill:	No	Clay like behavior	
Fines correction method:	Robertson (2009)	G.W.T. (earthq.):	0.00 m	Fill height:	N/A	applied:	All soils
Points to test:	Based on Ic value	Average results interval:	3	Fill weight:	N/A	Limit depth applied:	Yes
Earthquake magnitude M_w :	5.99	Ic cut-off value:	2.60	Trans. detect. applied:	Yes	Limit depth:	20.00 m
Peak ground acceleration:	0.14	Unit weight calculation:	Based on SBT	K_0 applied:	No	MSF method:	Method based



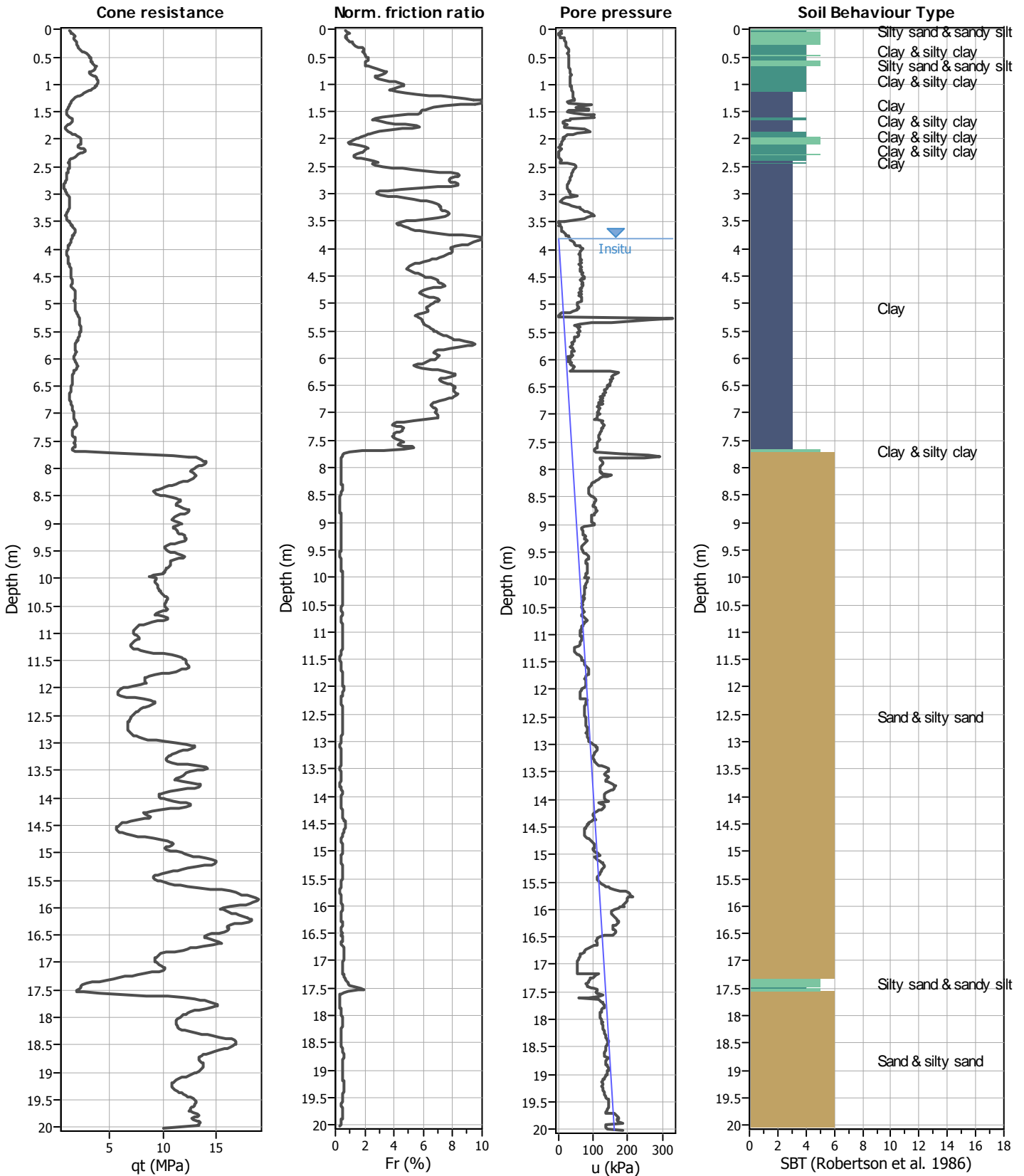
Analysis method:	Robertson (2009)	G.W.T. (in-situ):	3.75 m	Use fill:	No	Clay like behavior	
Fines correction method:	Robertson (2009)	G.W.T. (earthq.):	0.00 m	Fill height:	N/A	applied:	All soils
Points to test:	Based on Ic value	Average results interval:	3	Fill weight:	N/A	Limit depth applied:	Yes
Earthquake magnitude M_w :	5.99	Ic cut-off value:	2.60	Trans. detect. applied:	Yes	Limit depth:	20.00 m
Peak ground acceleration:	0.14	Unit weight calculation:	Based on SBT	K_s applied:	No	MSF method:	Method based



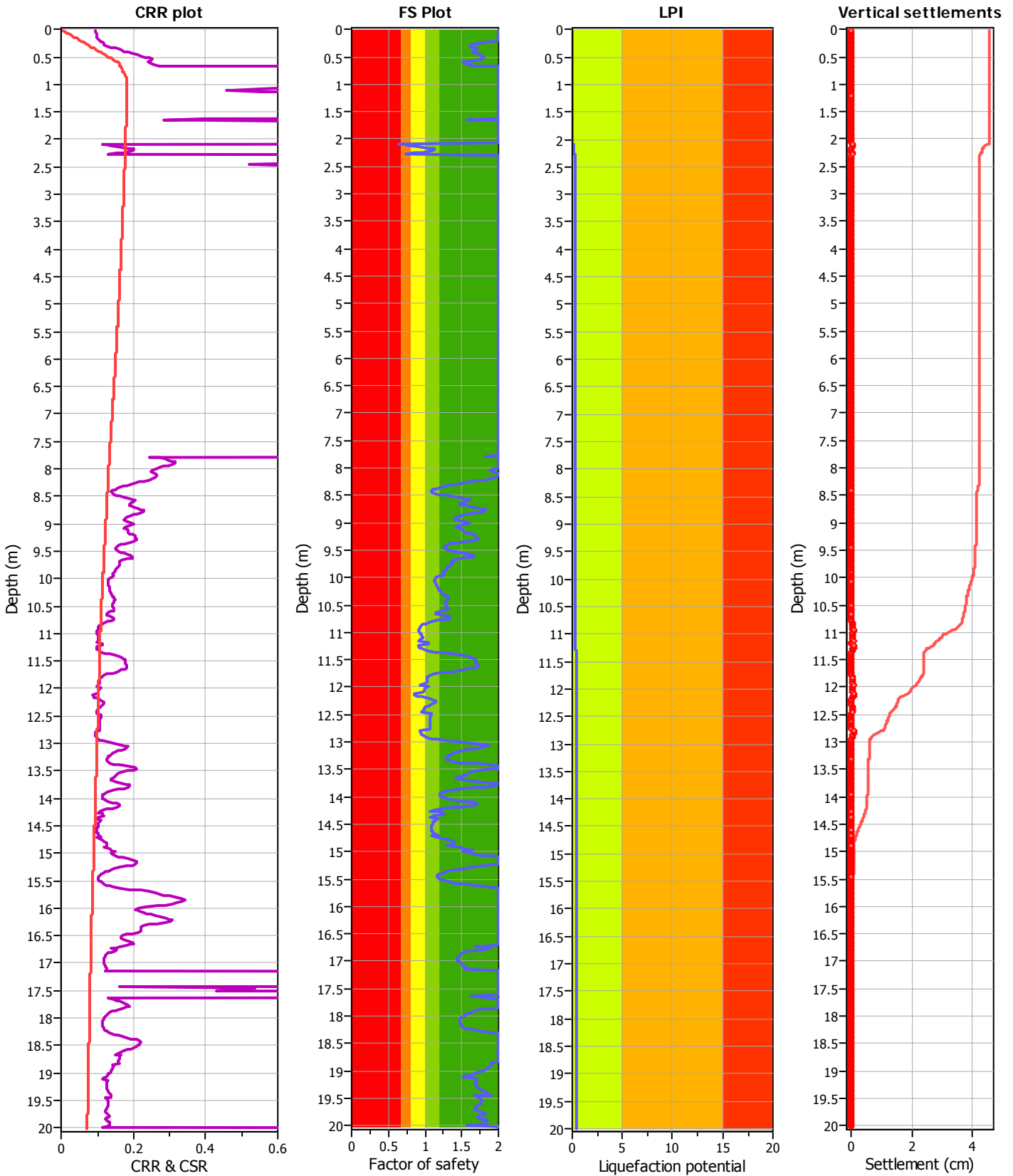
Analysis method:	Robertson (2009)	G.W.T. (in-situ):	2.60 m	Use fill:	No	Clay like behavior	
Fines correction method:	Robertson (2009)	G.W.T. (earthq.):	0.00 m	Fill height:	N/A	applied:	All soils
Points to test:	Based on Ic value	Average results interval:	3	Fill weight:	N/A	Limit depth applied:	Yes
Earthquake magnitude M_w :	5.99	Ic cut-off value:	2.60	Trans. detect. applied:	Yes	Limit depth:	20.00 m
Peak ground acceleration:	0.14	Unit weight calculation:	Based on SBT	K_0 applied:	No	MSF method:	Method based



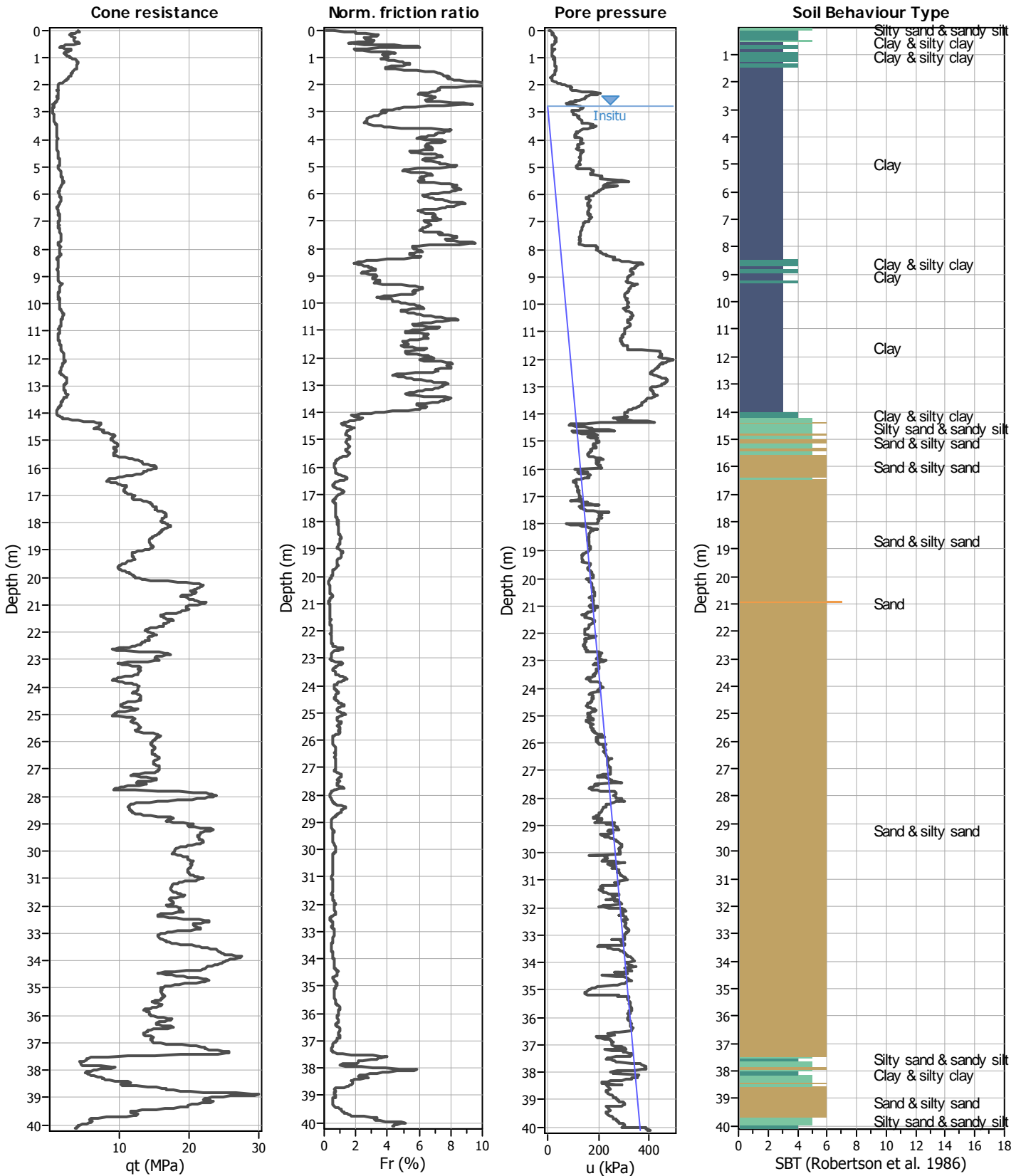
Analysis method:	Robertson (2009)	G.W.T. (in-situ):	2.60 m	Use fill:	No	Clay like behavior	
Fines correction method:	Robertson (2009)	G.W.T. (earthq.):	0.00 m	Fill height:	N/A	applied:	All soils
Points to test:	Based on Ic value	Average results interval:	3	Fill weight:	N/A	Limit depth applied:	Yes
Earthquake magnitude M_w :	5.99	Ic cut-off value:	2.60	Trans. detect. applied:	Yes	Limit depth:	20.00 m
Peak ground acceleration:	0.14	Unit weight calculation:	Based on SBT	K_s applied:	No	MSF method:	Method based



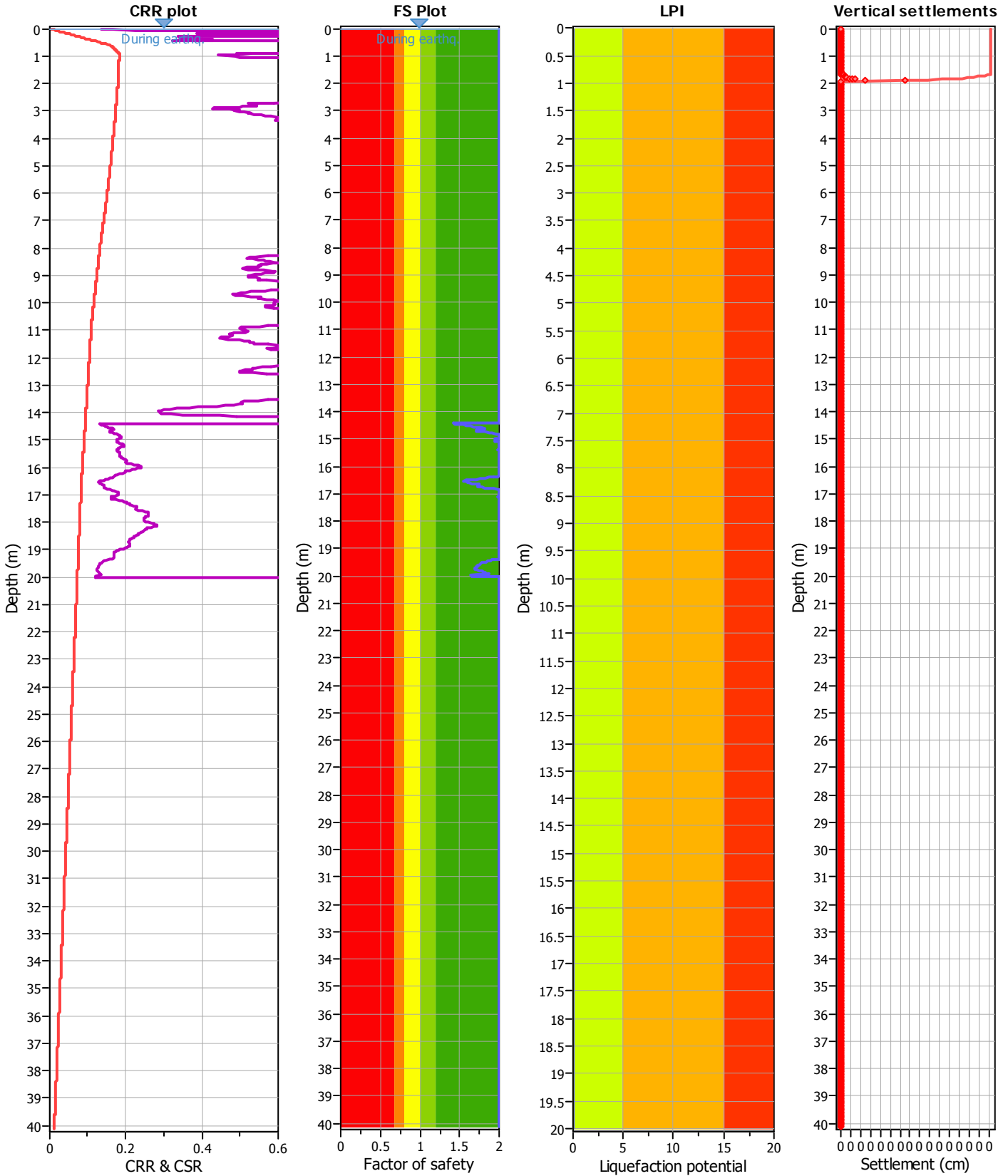
Analysis method:	Robertson (2009)	G.W.T. (in-situ):	3.80 m	Use fill:	No	Clay like behavior	
Fines correction method:	Robertson (2009)	G.W.T. (earthq.):	0.00 m	Fill height:	N/A	applied:	All soils
Points to test:	Based on Ic value	Average results interval:	3	Fill weight:	N/A	Limit depth applied:	Yes
Earthquake magnitude M_w :	5.99	Ic cut-off value:	2.60	Trans. detect. applied:	Yes	Limit depth:	20.00 m
Peak ground acceleration:	0.14	Unit weight calculation:	Based on SBT	K_0 applied:	No	MSF method:	Method based



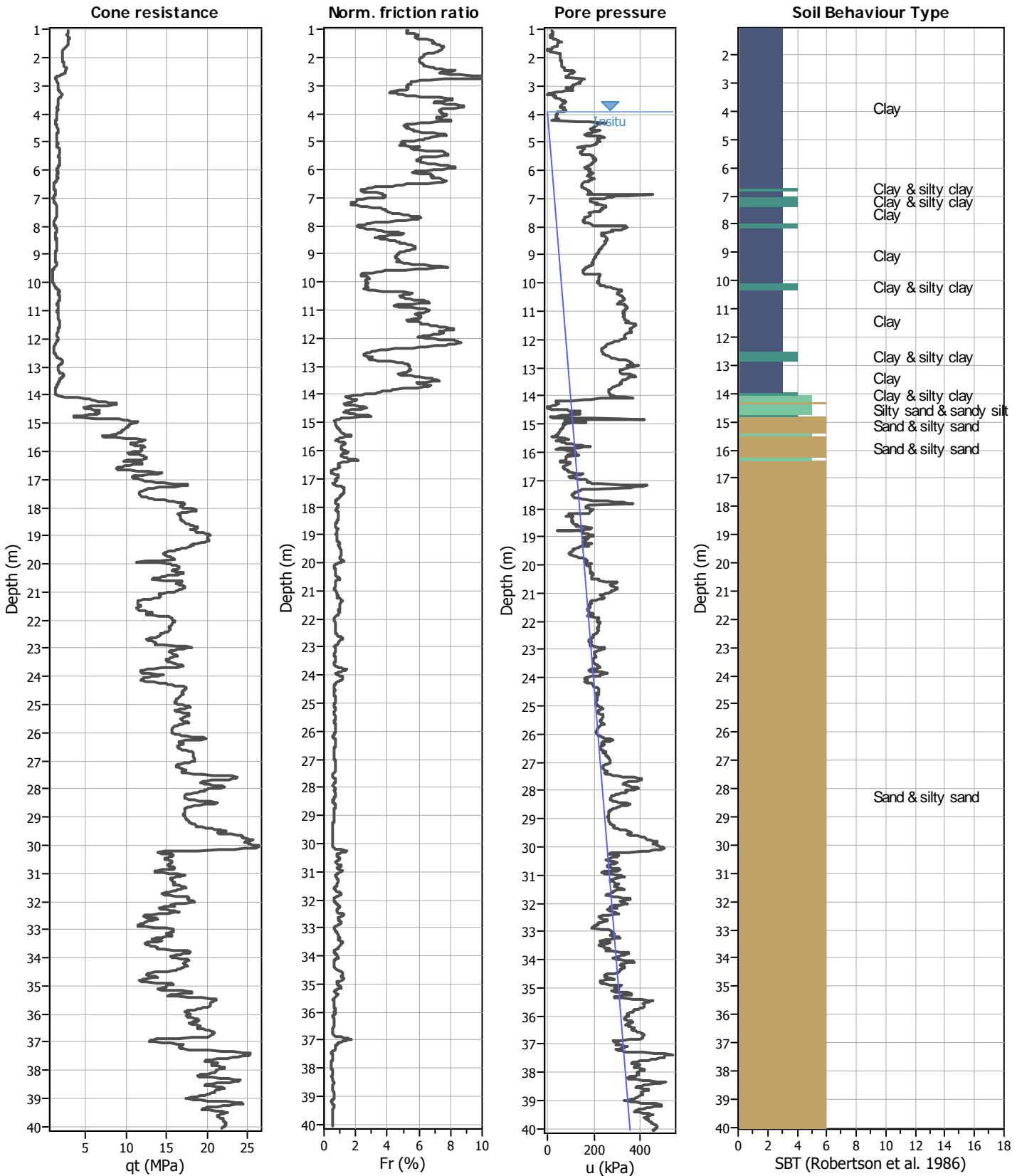
Analysis method:	Robertson (2009)	G.W.T. (in-situ):	3.80 m	Use fill:	No	Clay like behavior	
Fines correction method:	Robertson (2009)	G.W.T. (earthq.):	0.00 m	Fill height:	N/A	applied:	All soils
Points to test:	Based on Ic value	Average results interval:	3	Fill weight:	N/A	Limit depth applied:	Yes
Earthquake magnitude M_w :	5.99	Ic cut-off value:	2.60	Trans. detect. applied:	Yes	Limit depth:	20.00 m
Peak ground acceleration:	0.14	Unit weight calculation:	Based on SBT	K_v applied:	No	MSF method:	Method based



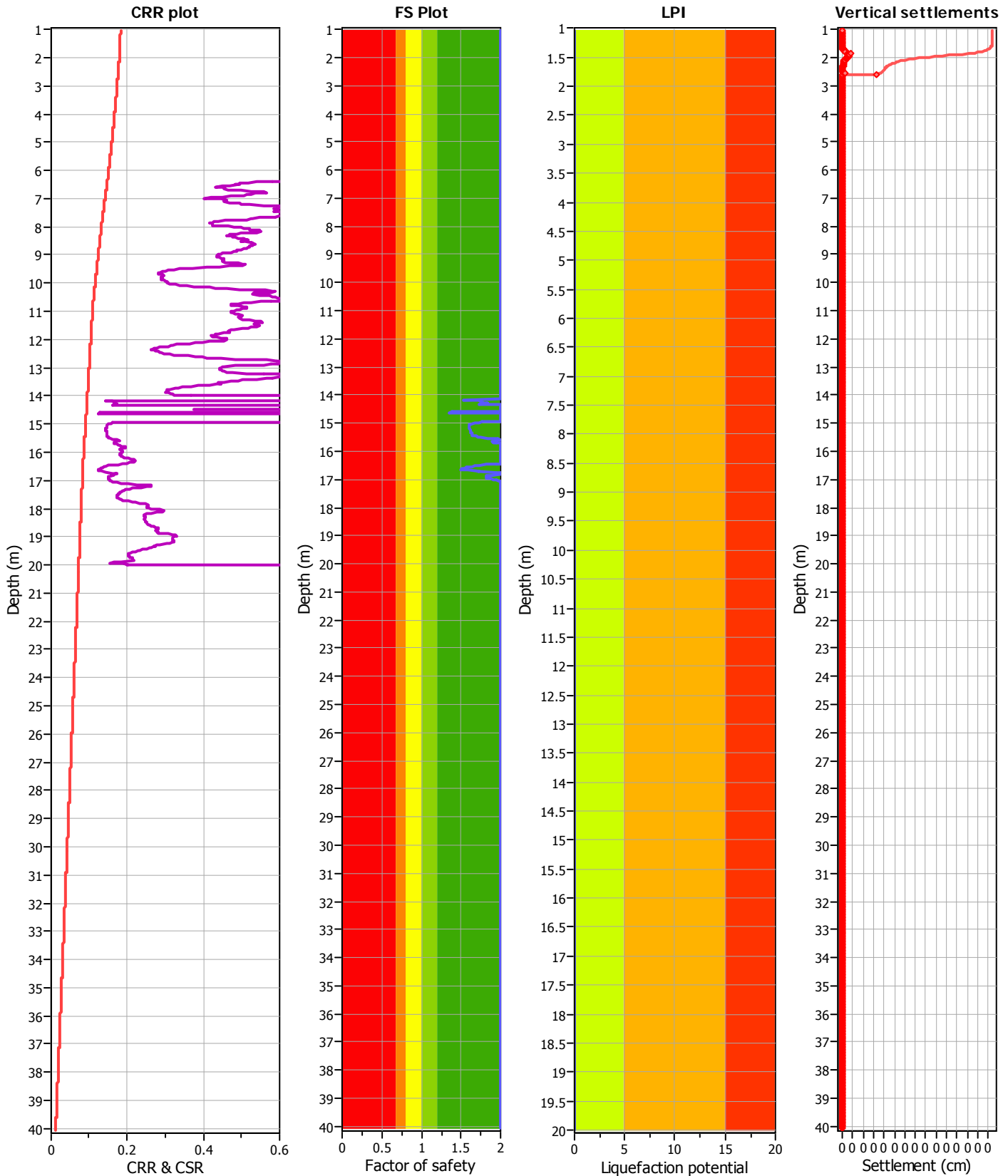
Analysis method:	Robertson (2009)	G.W.T. (in-situ):	2.75 m	Use fill:	No	Clay like behavior	
Fines correction method:	Robertson (2009)	G.W.T. (earthq.):	0.00 m	Fill height:	N/A	applied:	All soils
Points to test:	Based on Ic value	Average results interval:	3	Fill weight:	N/A	Limit depth applied:	Yes
Earthquake magnitude M_w :	5.99	Ic cut-off value:	2.60	Trans. detect. applied:	Yes	Limit depth:	20.00 m
Peak ground acceleration:	0.14	Unit weight calculation:	Based on SBT	K_0 applied:	No	MSF method:	Method based



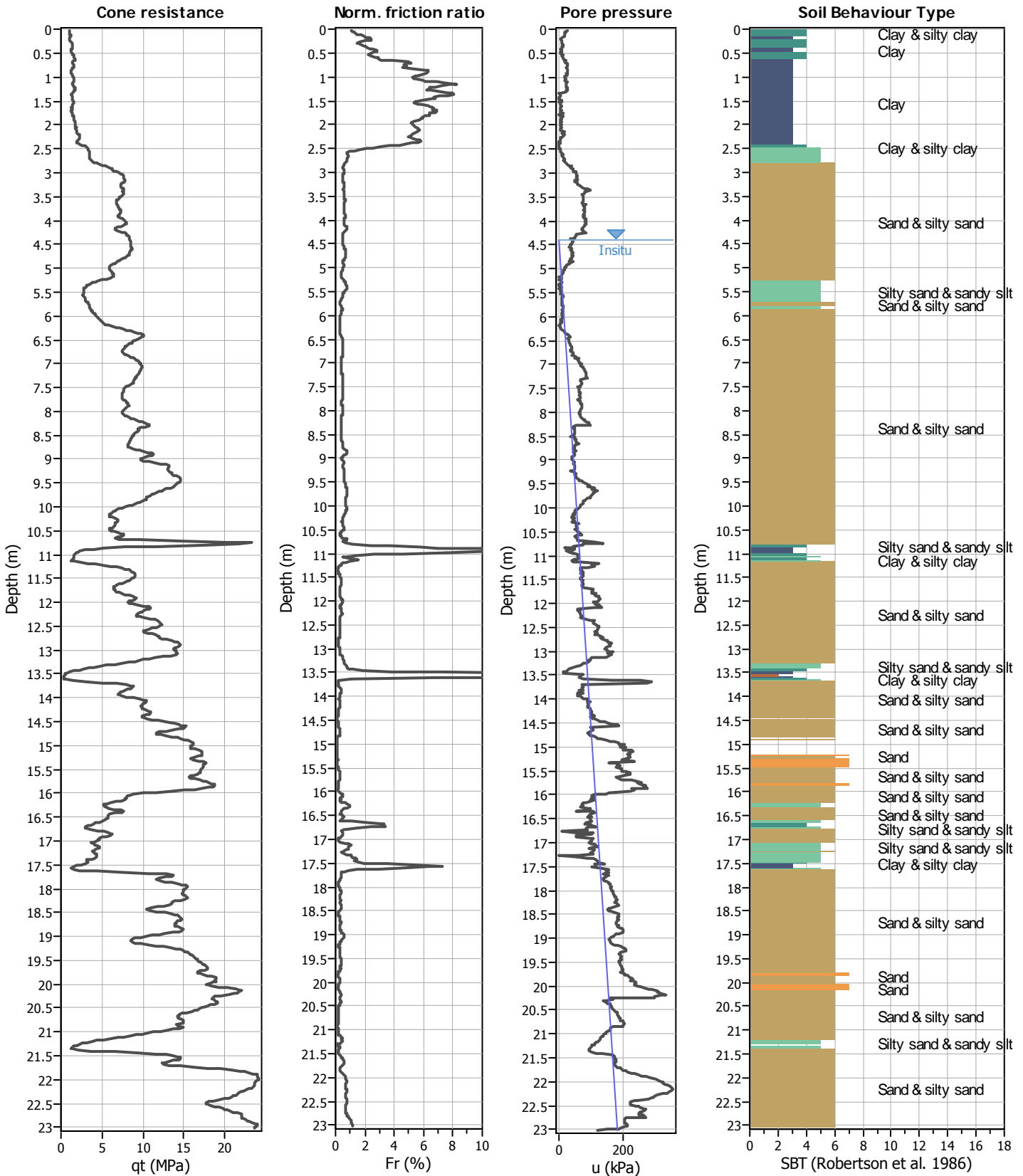
Analysis method:	Robertson (2009)	G.W.T. (in-situ):	2.75 m	Use fill:	No	Clay like behavior	
Fines correction method:	Robertson (2009)	G.W.T. (earthq.):	0.00 m	Fill height:	N/A	applied:	All soils
Points to test:	Based on Ic value	Average results interval:	3	Fill weight:	N/A	Limit depth applied:	Yes
Earthquake magnitude M_w :	5.99	Ic cut-off value:	2.60	Trans. detect. applied:	Yes	Limit depth:	20.00 m
Peak ground acceleration:	0.14	Unit weight calculation:	Based on SBT	K_s applied:	No	MSF method:	Method based



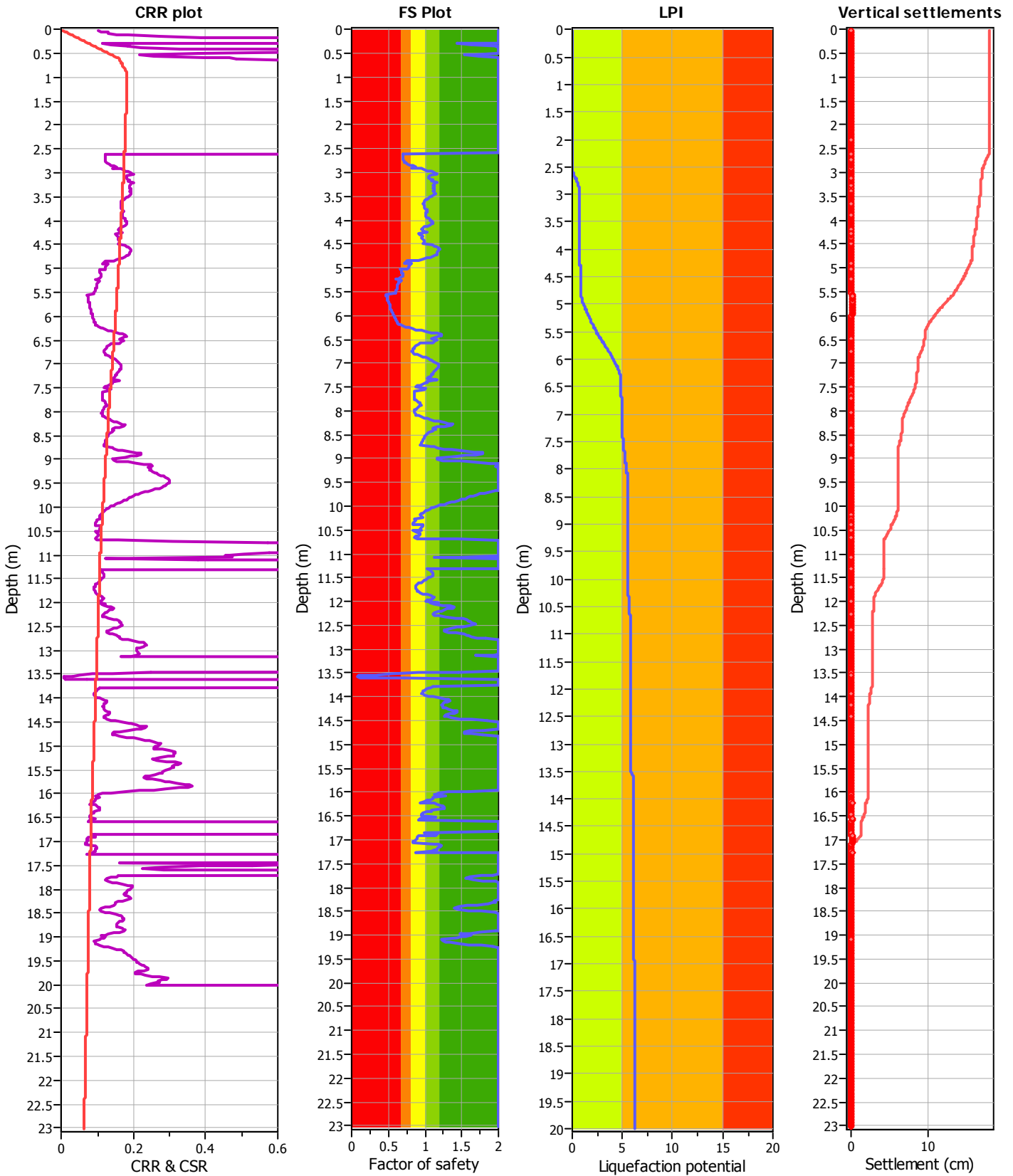
Analysis method:	Robertson (2009)	G.W.T. (in-situ):	3.90 m	Use fill:	No	Clay like behavior	
Fines correction method:	Robertson (2009)	G.W.T. (earthq.):	0.00 m	Fill height:	N/A	applied:	All soils
Points to test:	Based on Ic value	Average results interval:	3	Fill weight:	N/A	Limit depth applied:	Yes
Earthquake magnitude M_w :	5.99	Ic cut-off value:	2.60	Trans. detect. applied:	Yes	Limit depth:	20.00 m
Peak ground acceleration:	0.14	Unit weight calculation:	Based on SBT	K_0 applied:	No	MSF method:	Method based



Analysis method:	Robertson (2009)	G.W.T. (in-situ):	3.90 m	Use fill:	No	Clay like behavior	
Fines correction method:	Robertson (2009)	G.W.T. (earthq.):	0.00 m	Fill height:	N/A	applied:	All soils
Points to test:	Based on Ic value	Average results interval:	3	Fill weight:	N/A	Limit depth applied:	Yes
Earthquake magnitude M_w :	5.99	Ic cut-off value:	2.60	Trans. detect. applied:	Yes	Limit depth:	20.00 m
Peak ground acceleration:	0.14	Unit weight calculation:	Based on SBT	K_s applied:	No	MSF method:	Method based



Analysis method:	Robertson (2009)	G.W.T. (in-situ):	4.40 m	Use fill:	No	Clay like behavior	
Fines correction method:	Robertson (2009)	G.W.T. (earthq.):	0.00 m	Fill height:	N/A	applied:	All soils
Points to test:	Based on Ic value	Average results interval:	3	Fill weight:	N/A	Limit depth applied:	Yes
Earthquake magnitude M_w :	5.99	Ic cut-off value:	2.60	Trans. detect. applied:	Yes	Limit depth:	20.00 m
Peak ground acceleration:	0.14	Unit weight calculation:	Based on SBT	K_0 applied:	No	MSF method:	Method based



Analysis method:	Robertson (2009)	G.W.T. (in-situ):	4.40 m	Use fill:	No	Clay like behavior	
Fines correction method:	Robertson (2009)	G.W.T. (earthq.):	0.00 m	Fill height:	N/A	applied:	All soils
Points to test:	Based on Ic value	Average results interval:	3	Fill weight:	N/A	Limit depth applied:	Yes
Earthquake magnitude M_w :	5.99	Ic cut-off value:	2.60	Trans. detect. applied:	Yes	Limit depth:	20.00 m
Peak ground acceleration:	0.14	Unit weight calculation:	Based on SBT	K_s applied:	No	MSF method:	Method based