

MICROZONAZIONE SISMICA




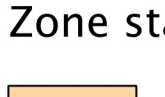
Carta di microzonazione sismica

FA_{IS} 0,5 - 1,5 s
scala 1:5.000

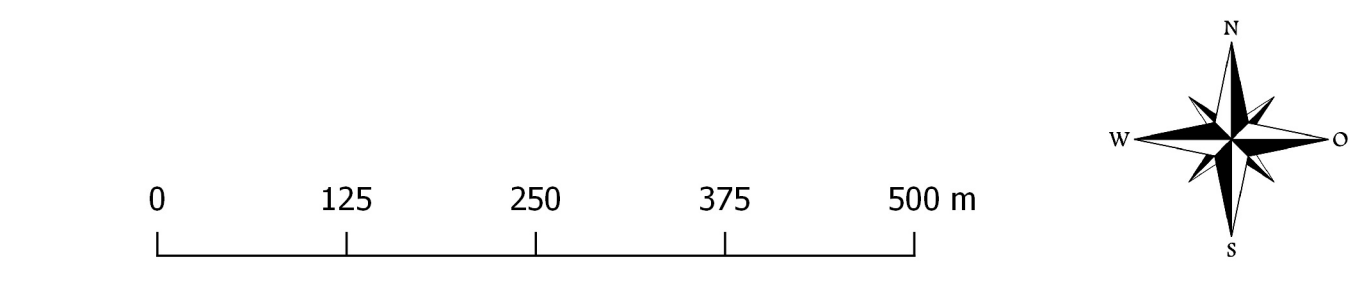
Regione Emilia-Romagna
Comune di Felino



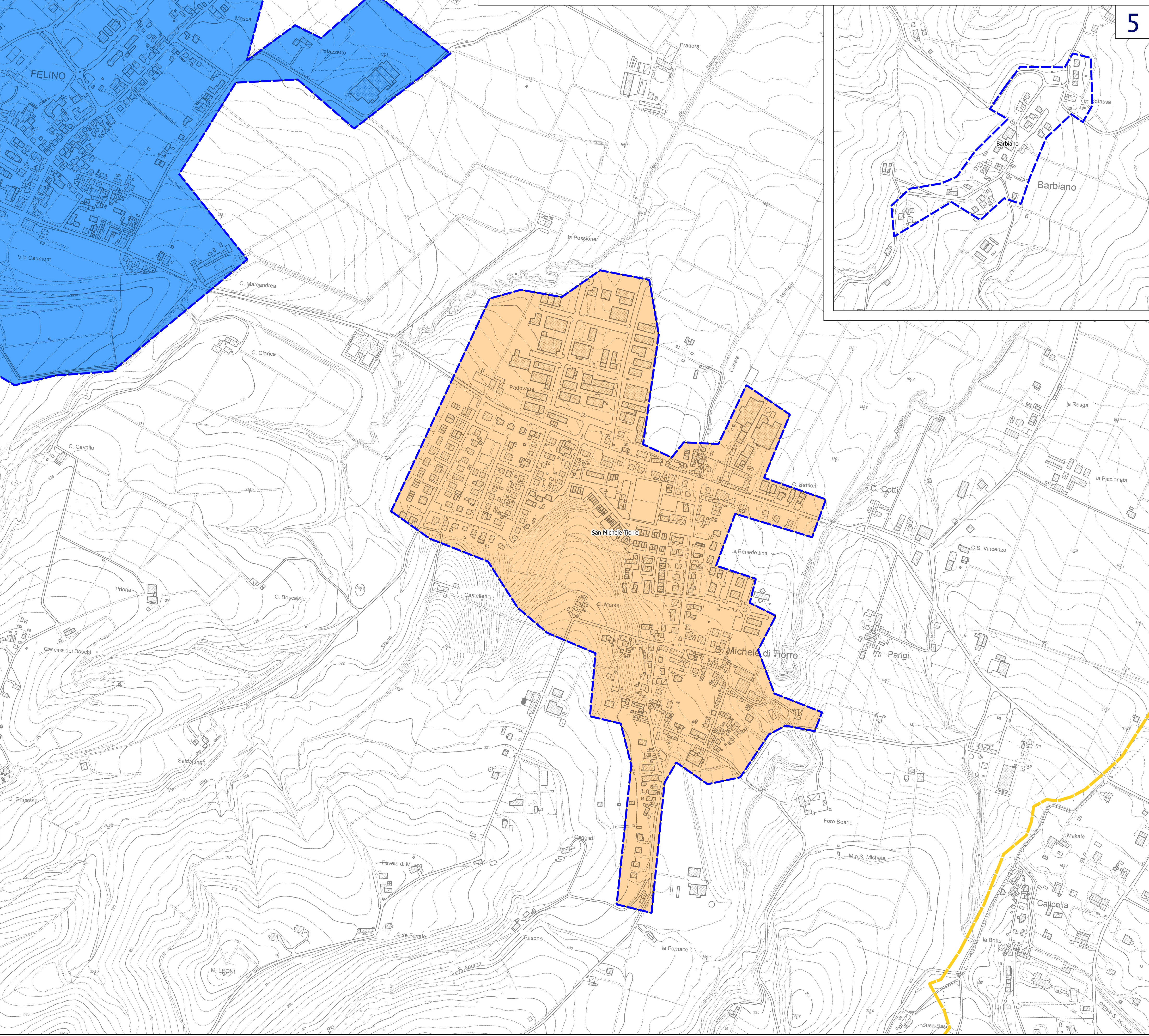
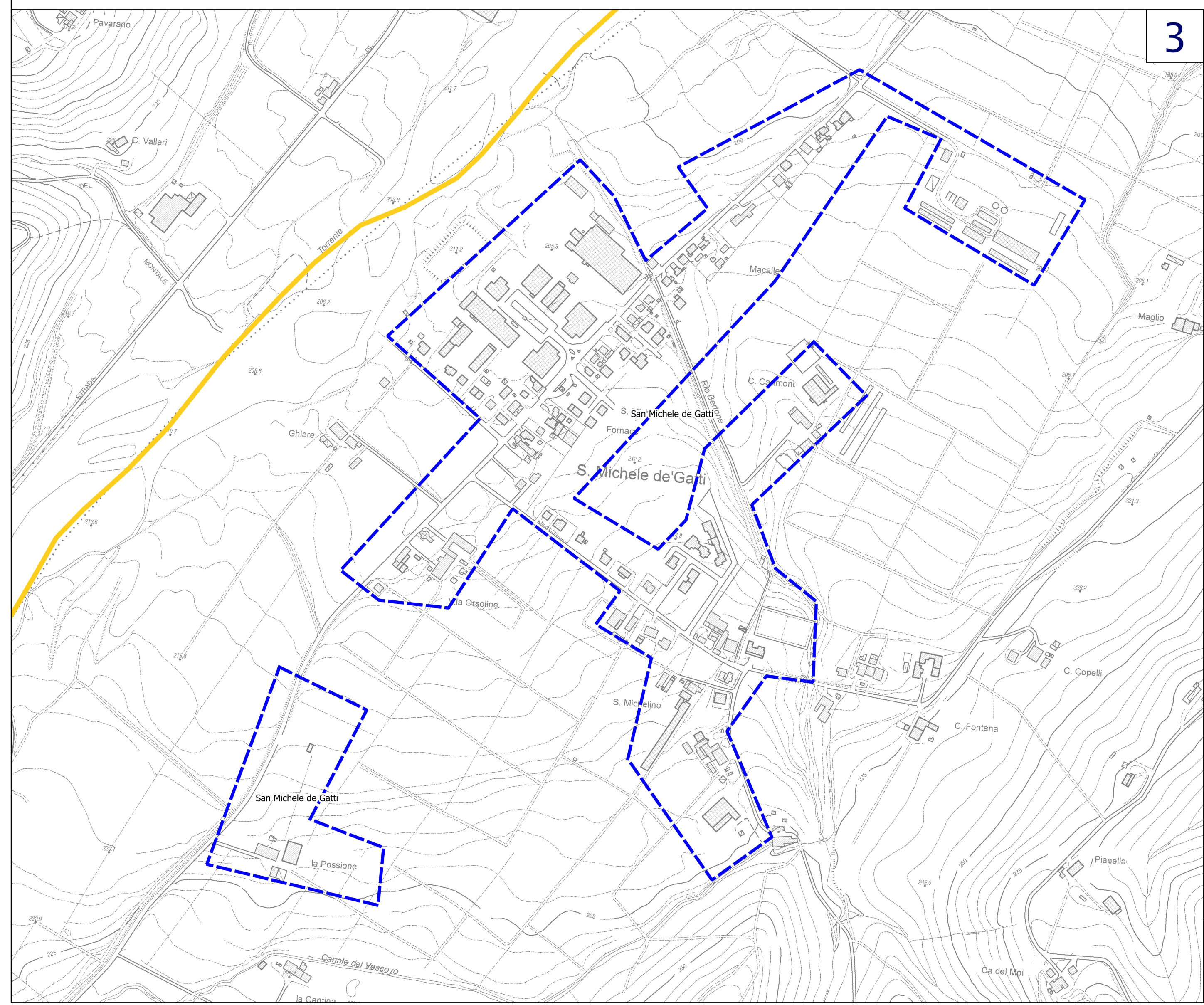
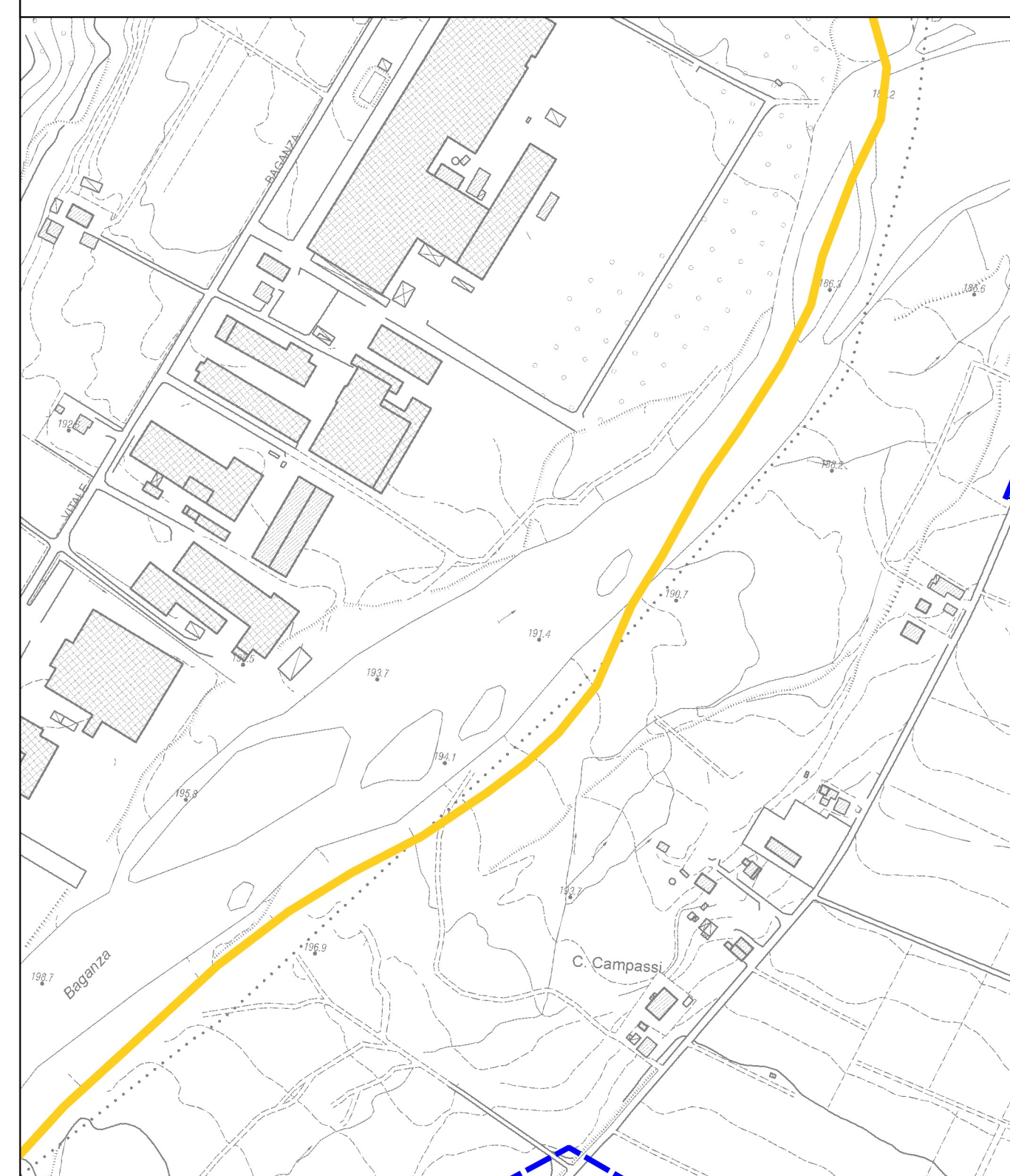
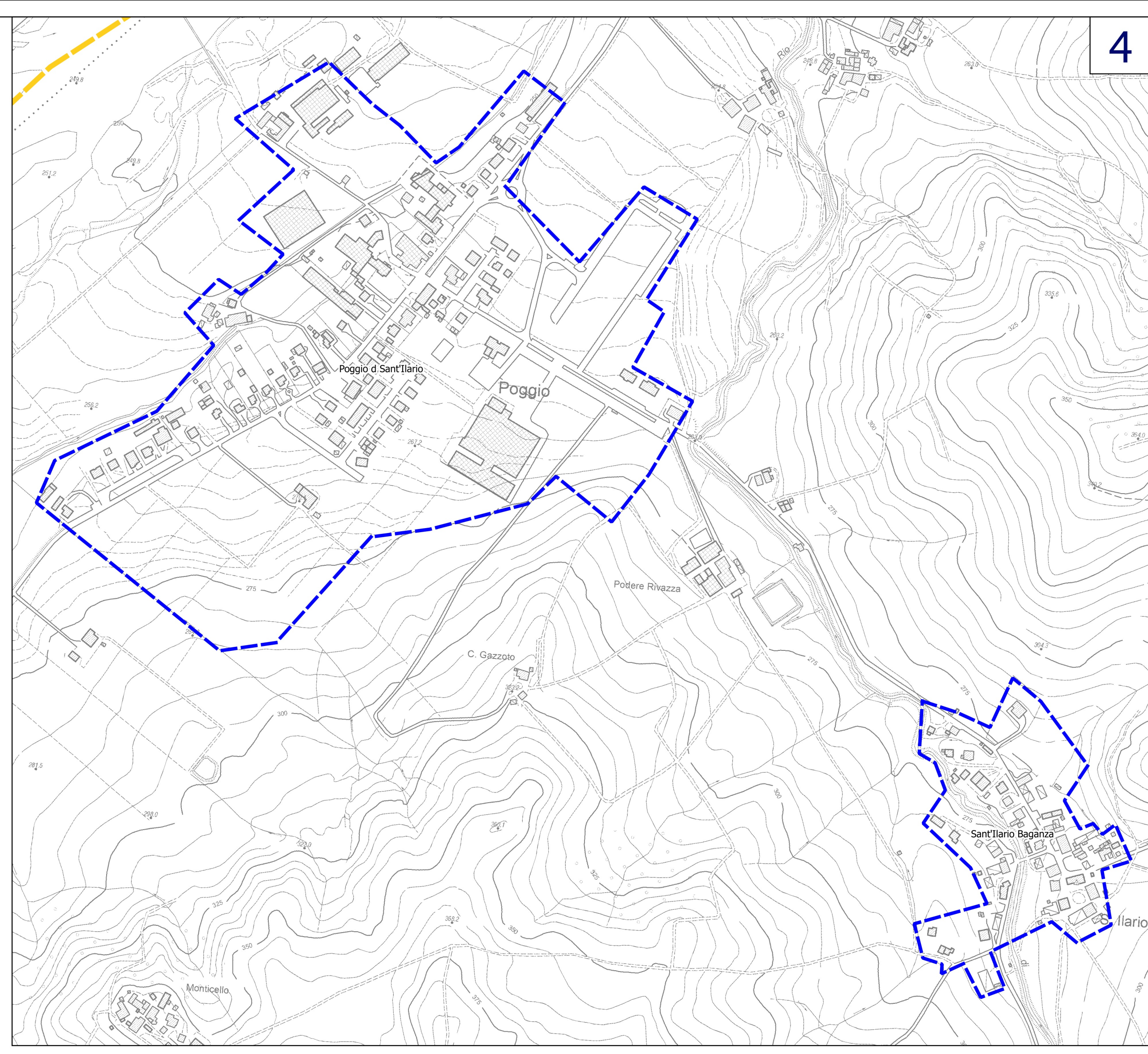
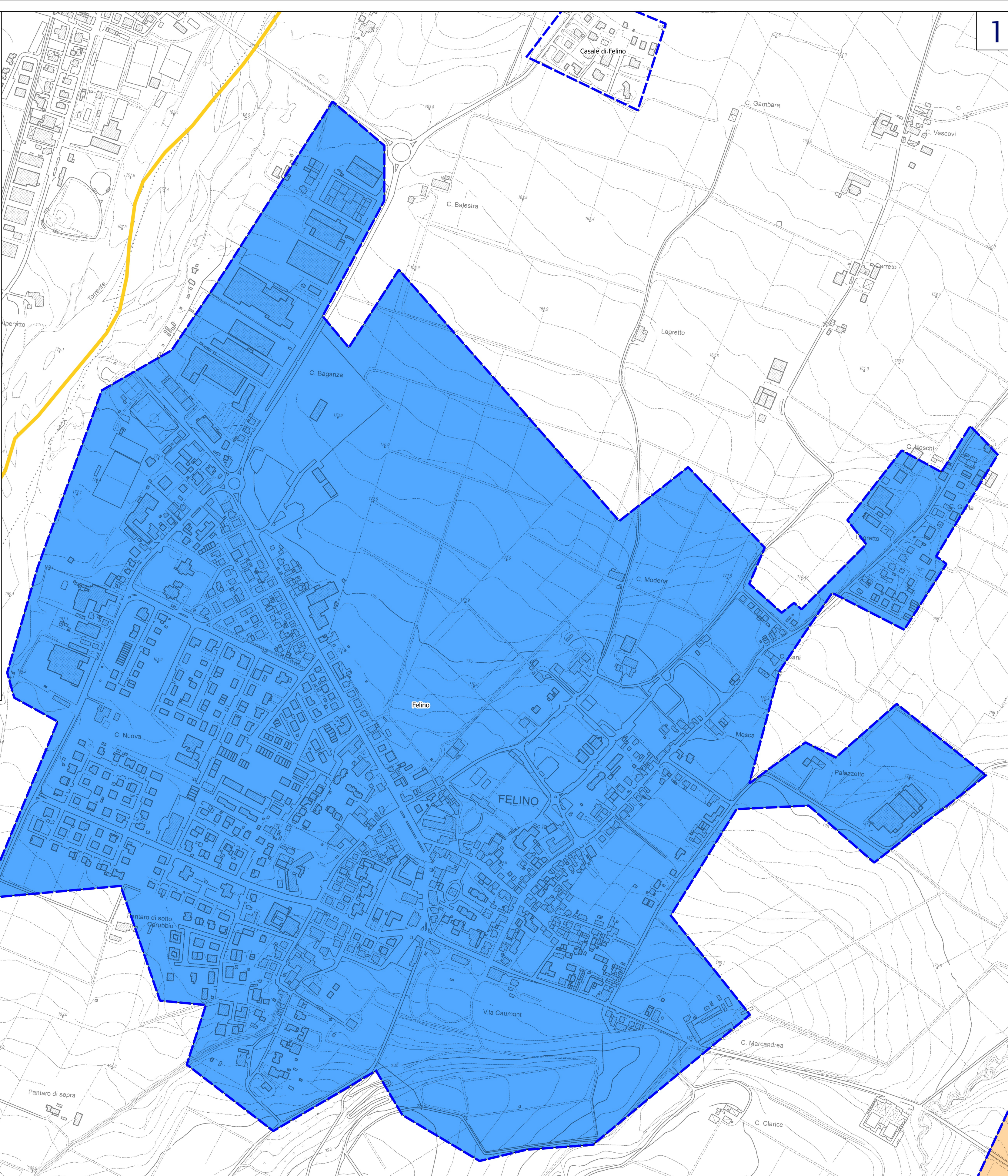
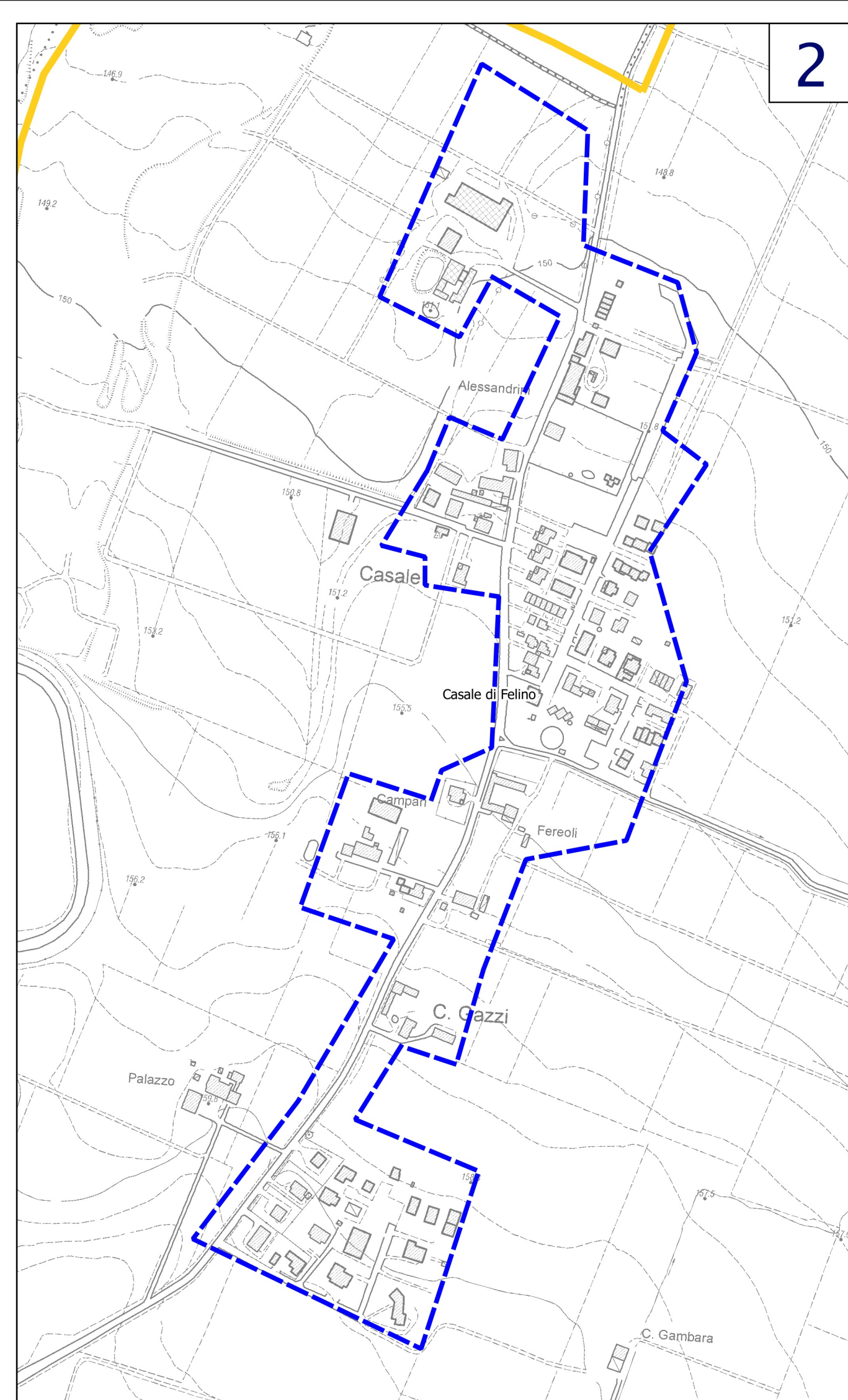
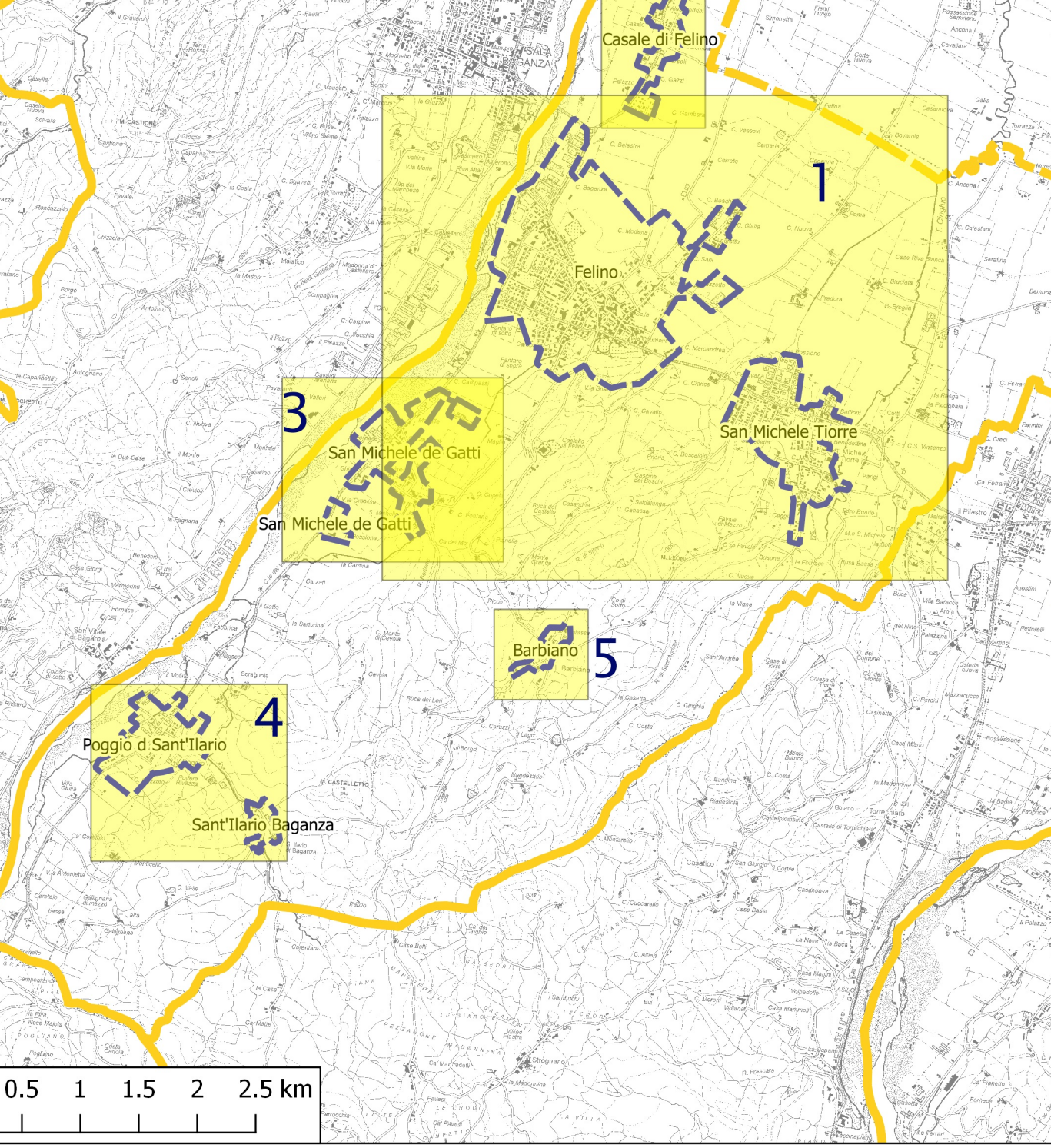
Regione Emilia-Romagna	Soggetto realizzatore ENGEOS DIREZIONE TECNICA Dott. Geol. Carlo Caleffi Dott. Geol. Francesco Cerutti Collaboratori Dott. Geol. Matteo Balsi Dott. Geol. Alessandro Ferrari Dott.ssa Giulia Mainardi	Data Marzo 2018
---------------------------	--	--------------------

- Legenda**
-  Confine Comunale
 -  Area oggetto di microzonazione sismica
 - Zone stabili**
 -  FA_{IS} 0,5 - 1,5 s = 1
 - Zone stabili suscettibili di amplificazioni locali**
 -  FA_{IS} 0,5 - 1,5 s = 1,5 - 1,6

N.B. Sono indicate le aree in cui è stato possibile calcolare fattori di amplificazione per l'intervallo 0,5 - 1,5 s



scala 1:50.000



1

2

4

3

5