

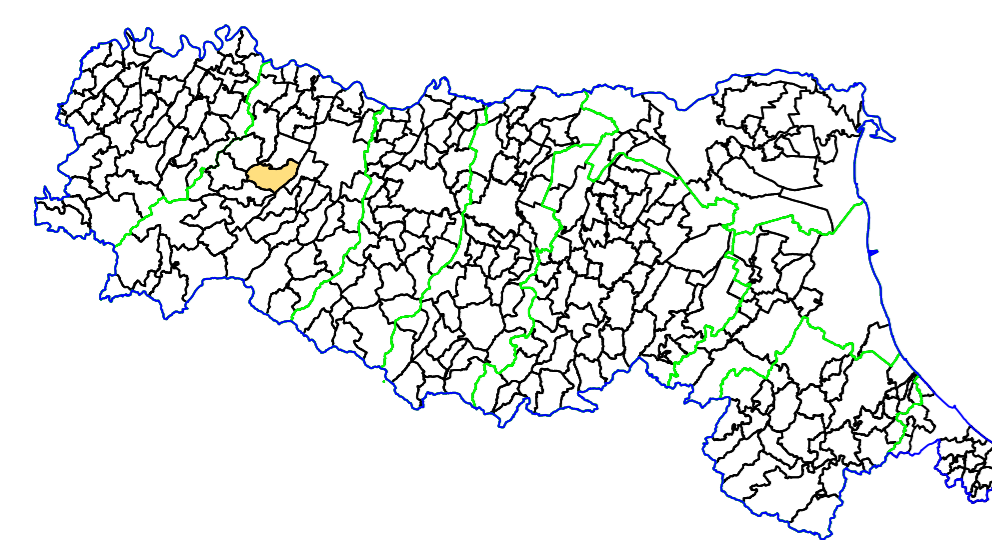
MICROZONAZIONE SISMICA

CARTA DELLE INDAGINI

scala 1 : 5.000

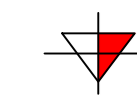
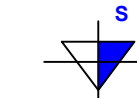
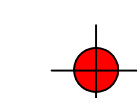


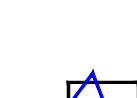
TAV. 01



Regione Emilia-Romagna
Comune di Medesano



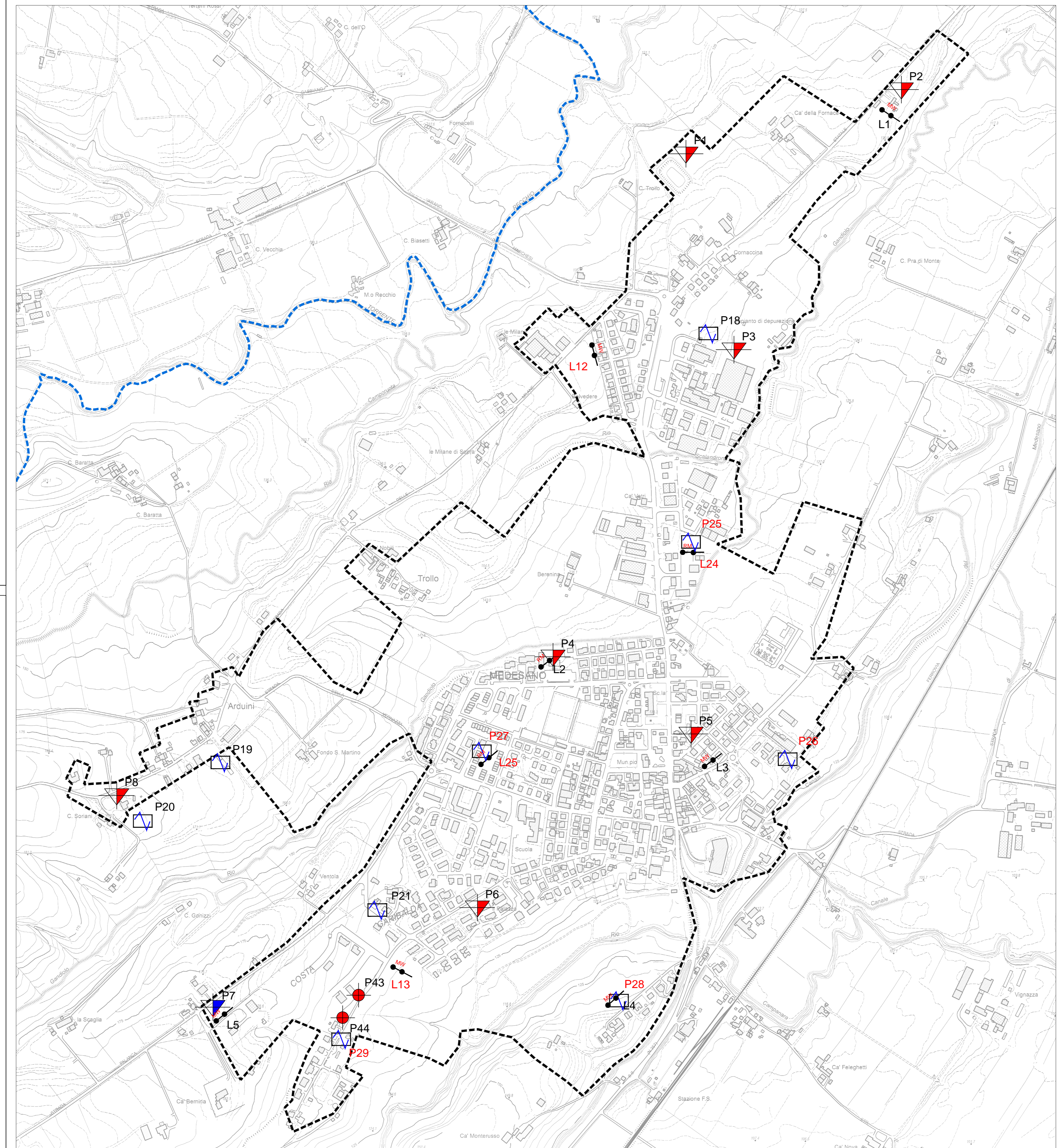
<p>Regione</p> 	<p>Soggetto realizzatore</p> <p>AMBITER S.p.A. <small>Studio di ingegneria sismica</small> Via Nazionale, 5/A - 41123 Parma (PR) Tel. 0521 942920 - Fax 0521 942921 e-mail: info@ambiter.it PEC: ambiter@pec.ambiter.it</p> 	<p>Data maggio 2018</p>
---	---	-------------------------

LEGENDA

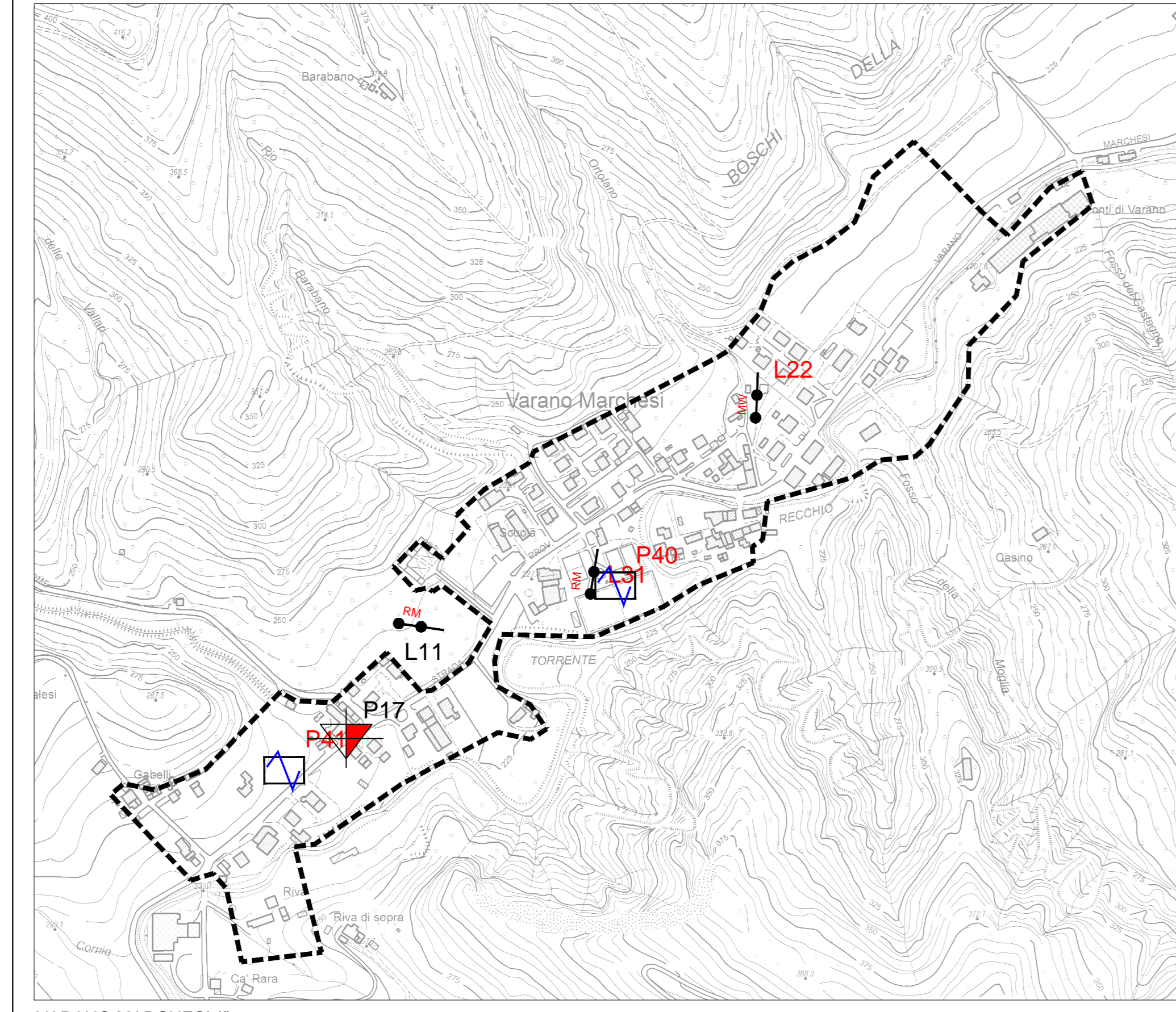
-  Prova penetrometrica statica CPT
-  Prova penetrometrica dinamica superpesante
-  Sondaggio a carotaggio continuo
-  Indagini geofisica MASW (con la sigla in rosso sono indicate le prove realizzate ex-novo)
-  Indagini geofisica ReM (con la sigla in rosso sono indicate le prove realizzate ex-novo)
-  Analisi dei microtremori HVSR (con la sigla in rosso sono indicate le prove realizzate ex-novo per il presente Studio di MS)

-  Ambito interessato dallo studio di microzonazione sismica
-  Confine comunale

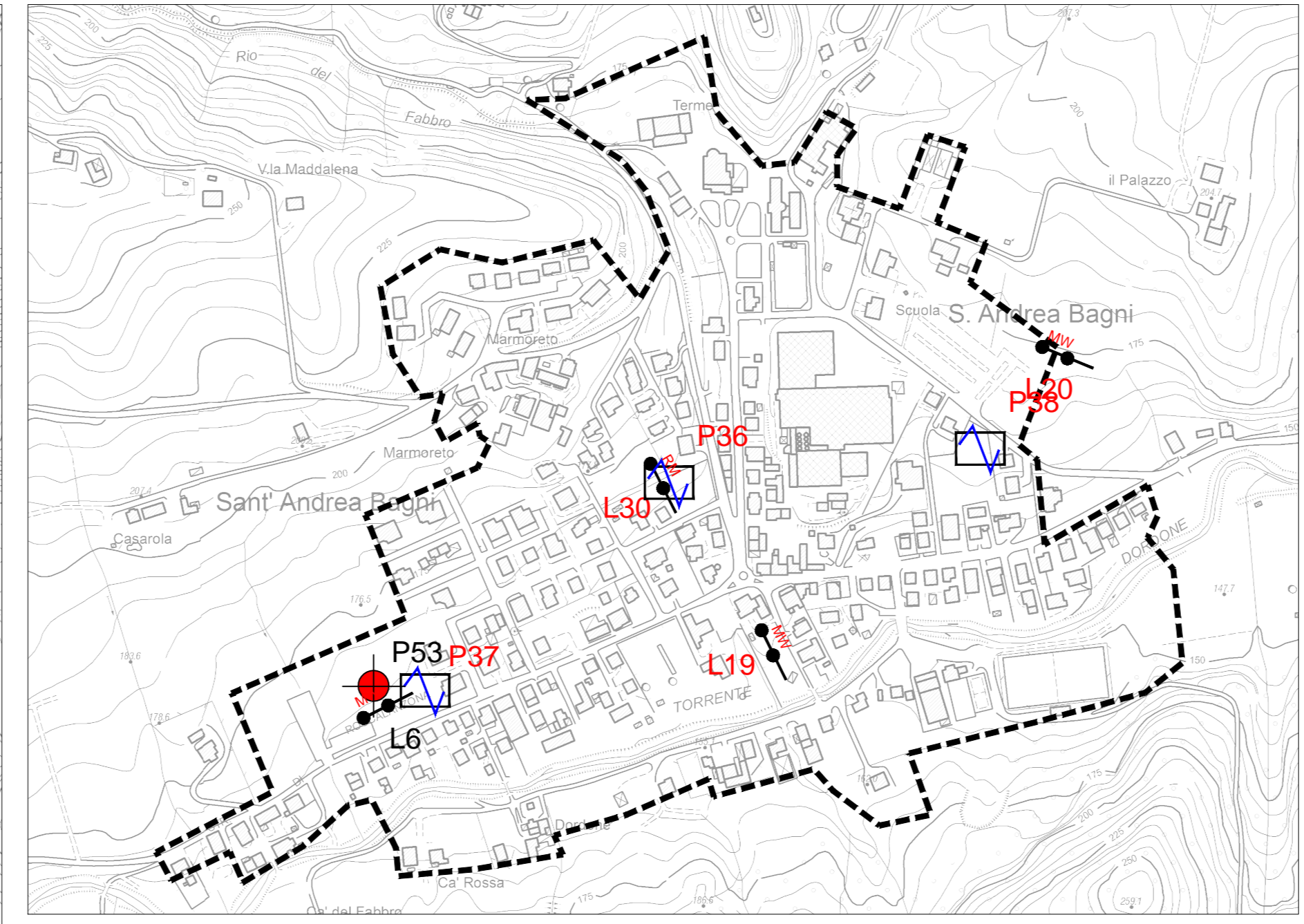
SCALA 1:100.000



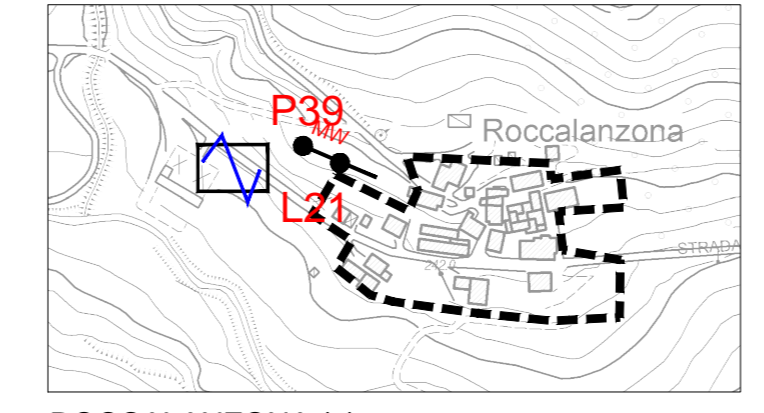
MEDESANO CAPOLUOGO (a)



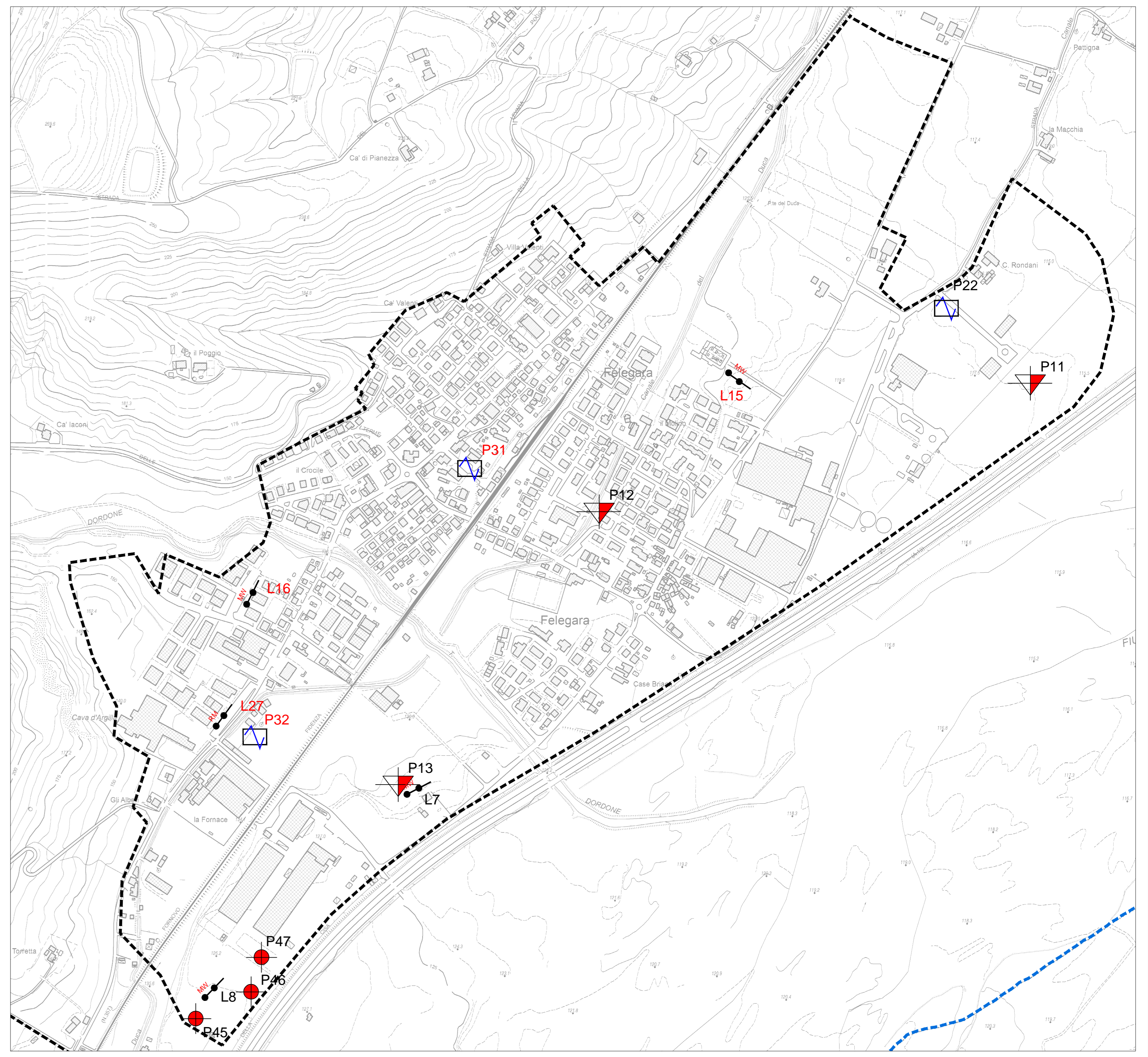
VARANO MARCHESI (f)



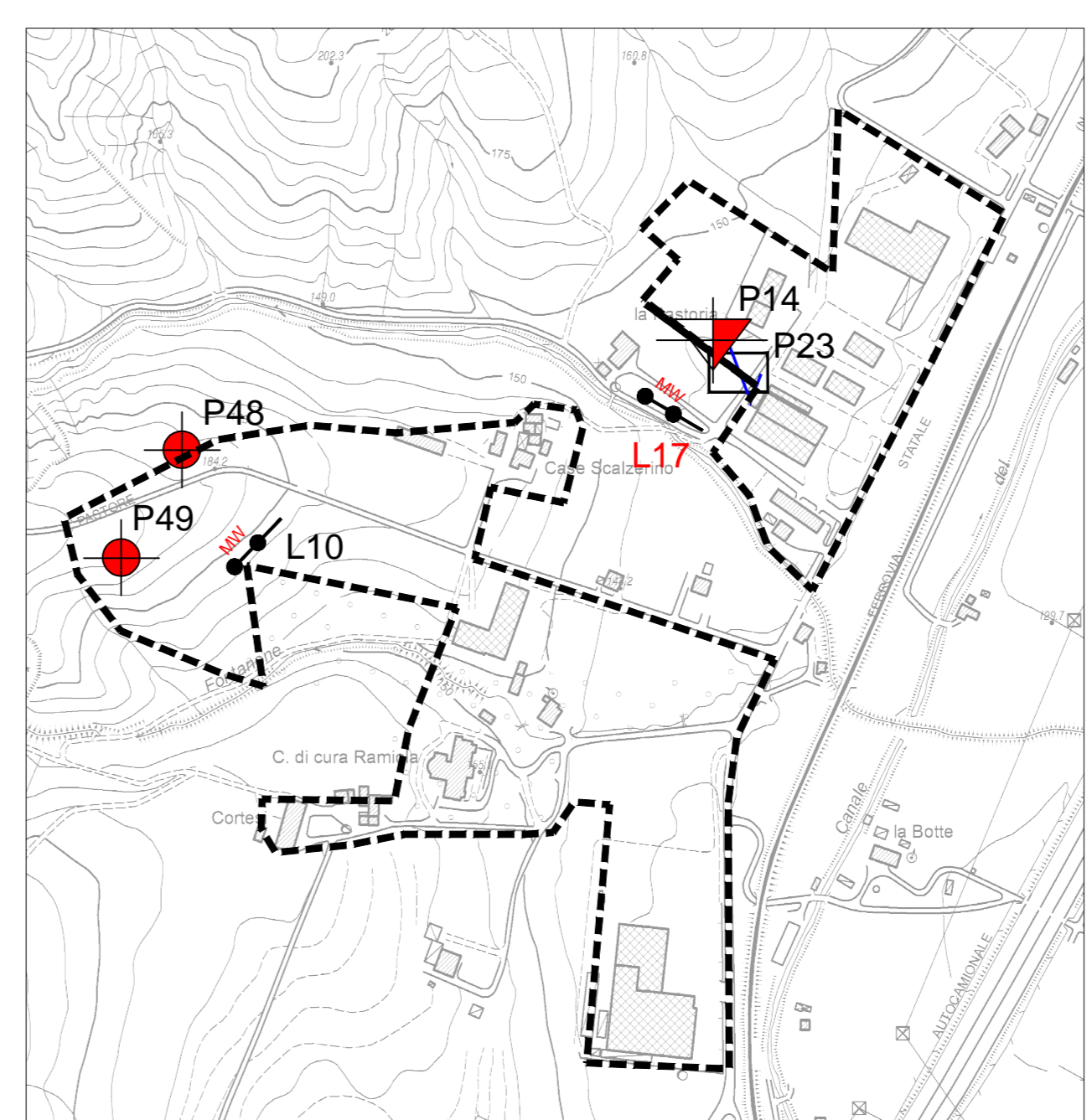
SANT'ANDREA BAGNI (e)



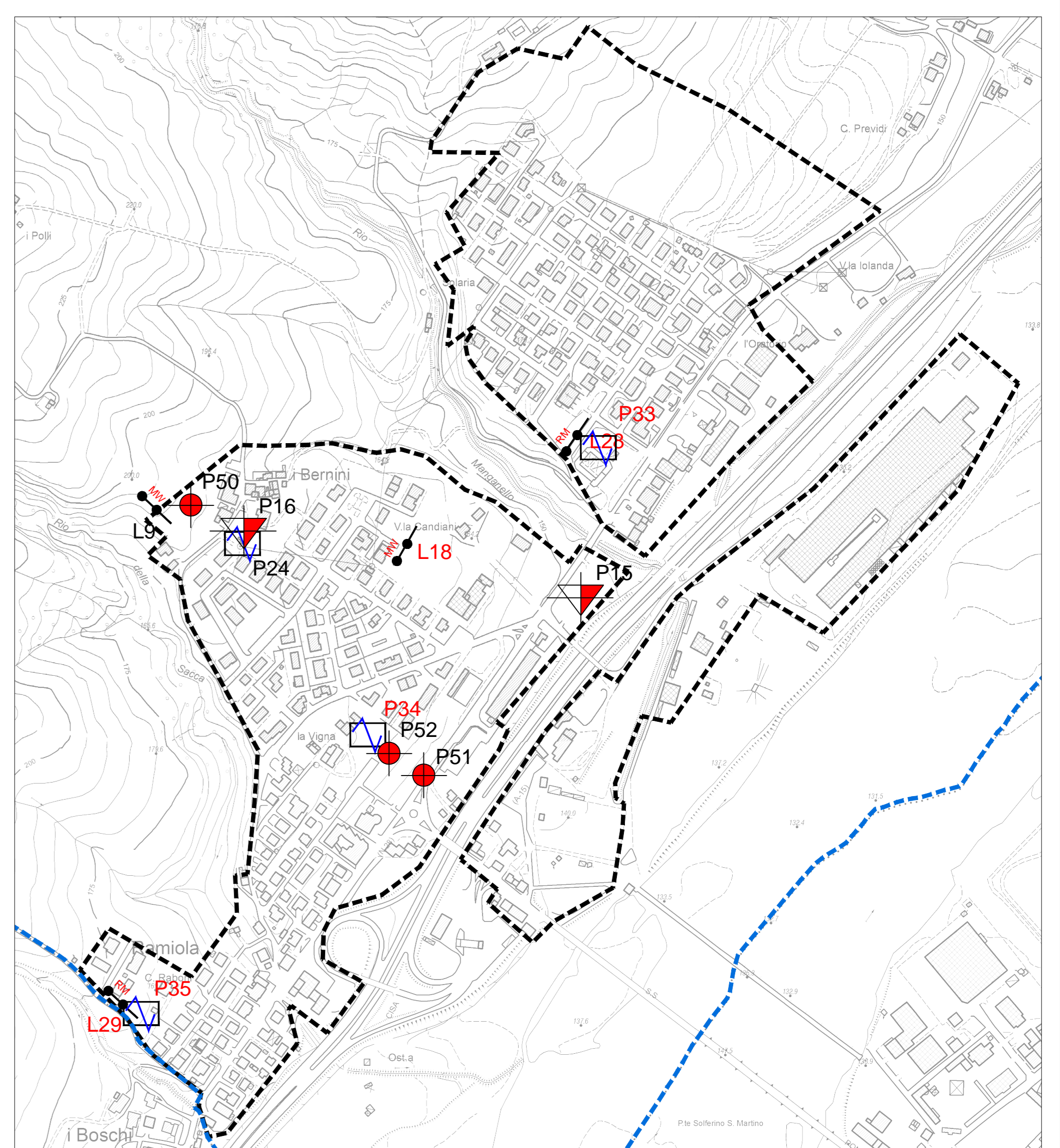
ROCCALANZONA (g)



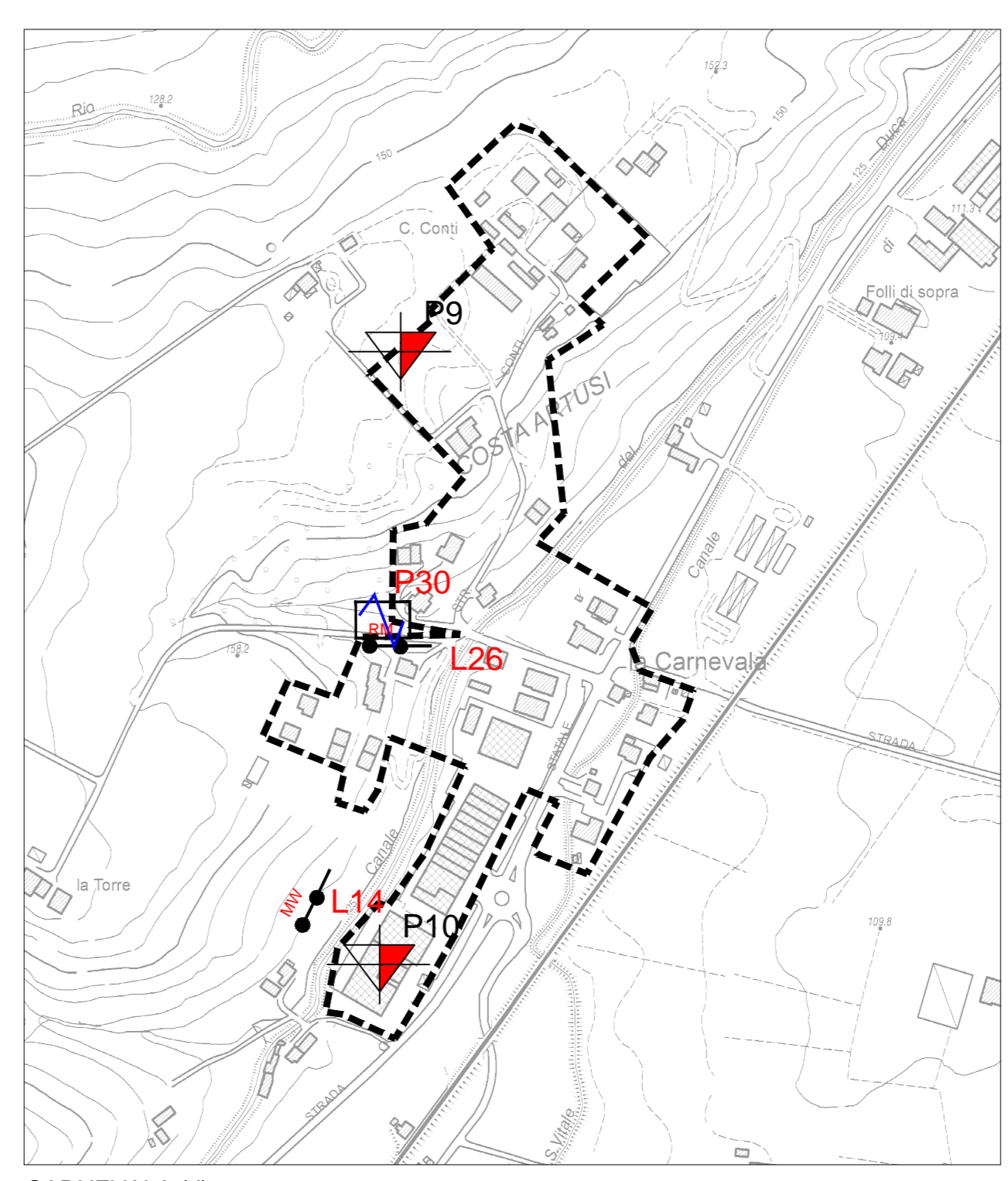
FELEGARA (b)



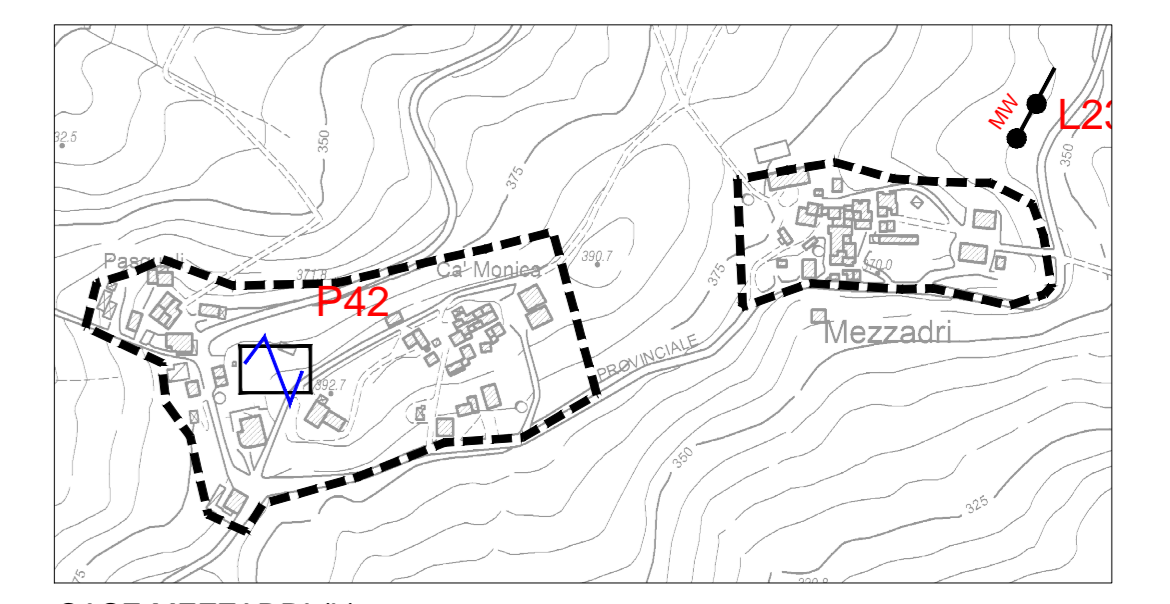
RAMIOLA (c1)



RAMIOLA (c2)



CARNEVALA (d)



CASE MEZZADRI (h)