

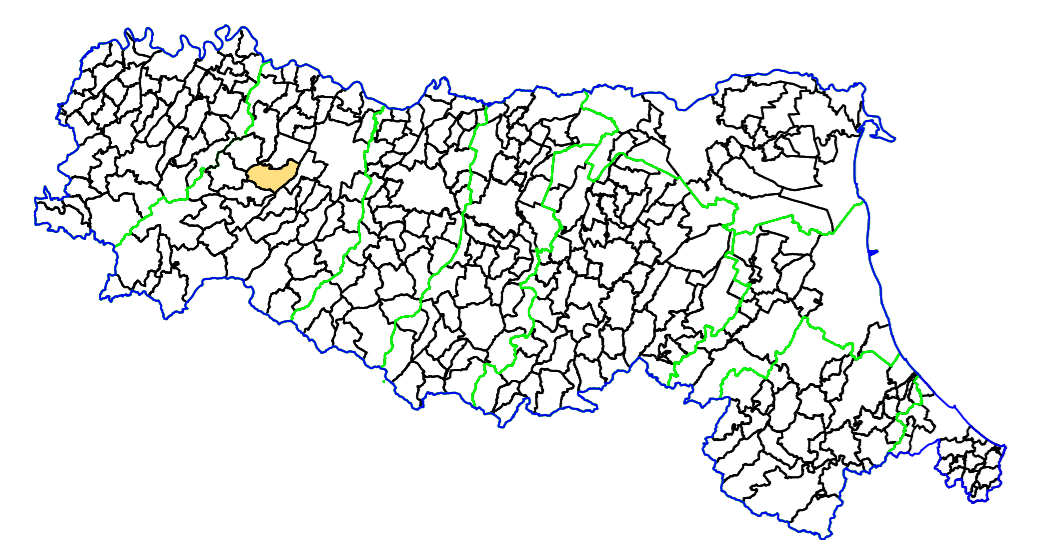
# MICROZONAZIONE SISMICA

CARTA DI MICROZONAZIONE SISMICA  
F.A. PGA

scala 1 : 5.000

TAV. 07a

Regione Emilia-Romagna  
Comune di Medesano



Regione	Soggetto realizzatore <b>AMBITER S.p.A.</b> Via Mazzini 5/A - 41123 Parma (PR) Tel. 0521 942620 - Fax 0521 942621 e-mail: info@ambiter.it PEC: ambiter@pec.ambiter.it	Data maggio 2018
---------	--	---------------------

**LEGENDA**

--- Ambito interessato dallo studio di microzonazione sismica

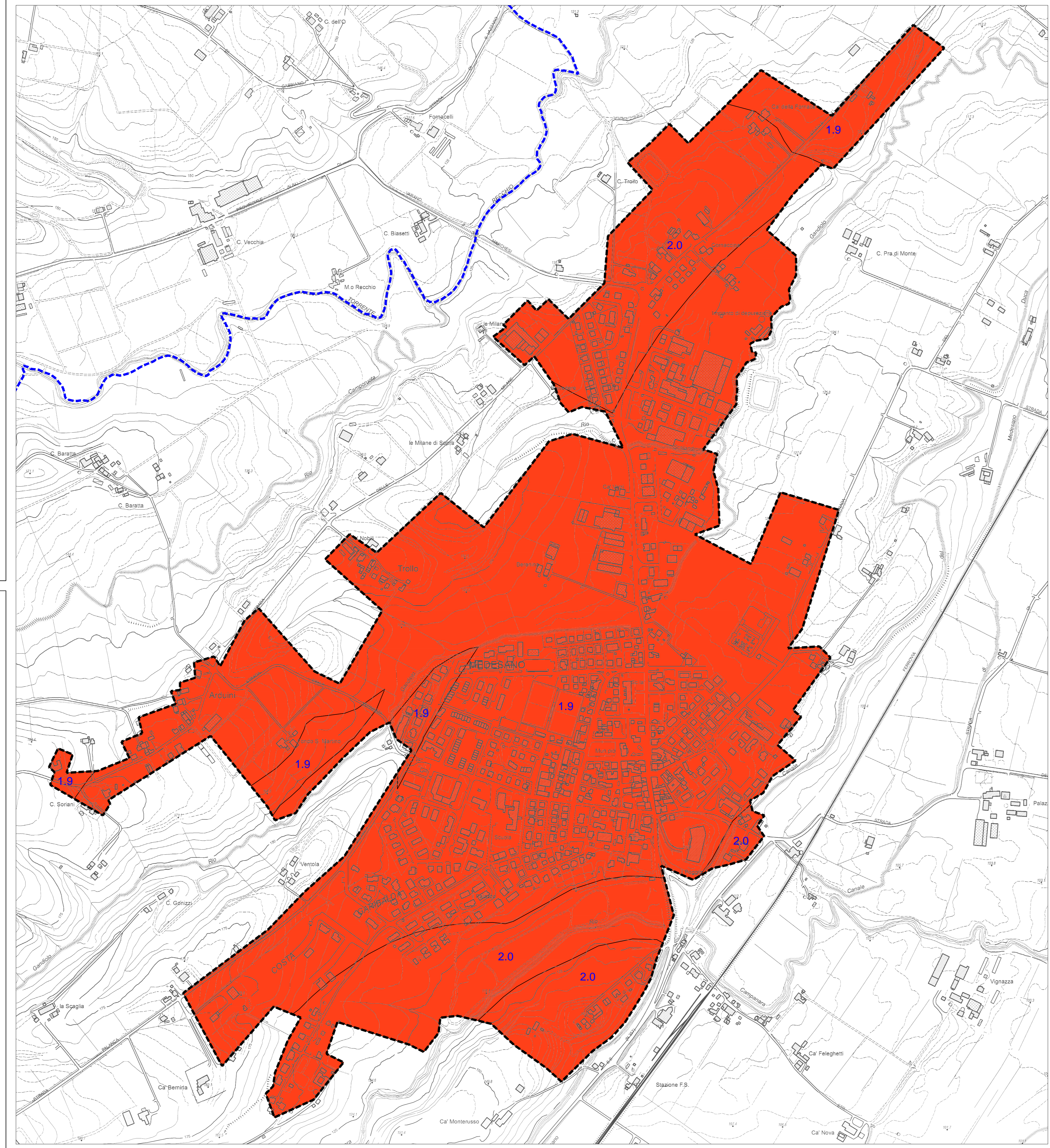
--- Confine comunale

**ZONE STABILI SUSCETTIBILI DI AMPLIFICAZIONI LOCALI**

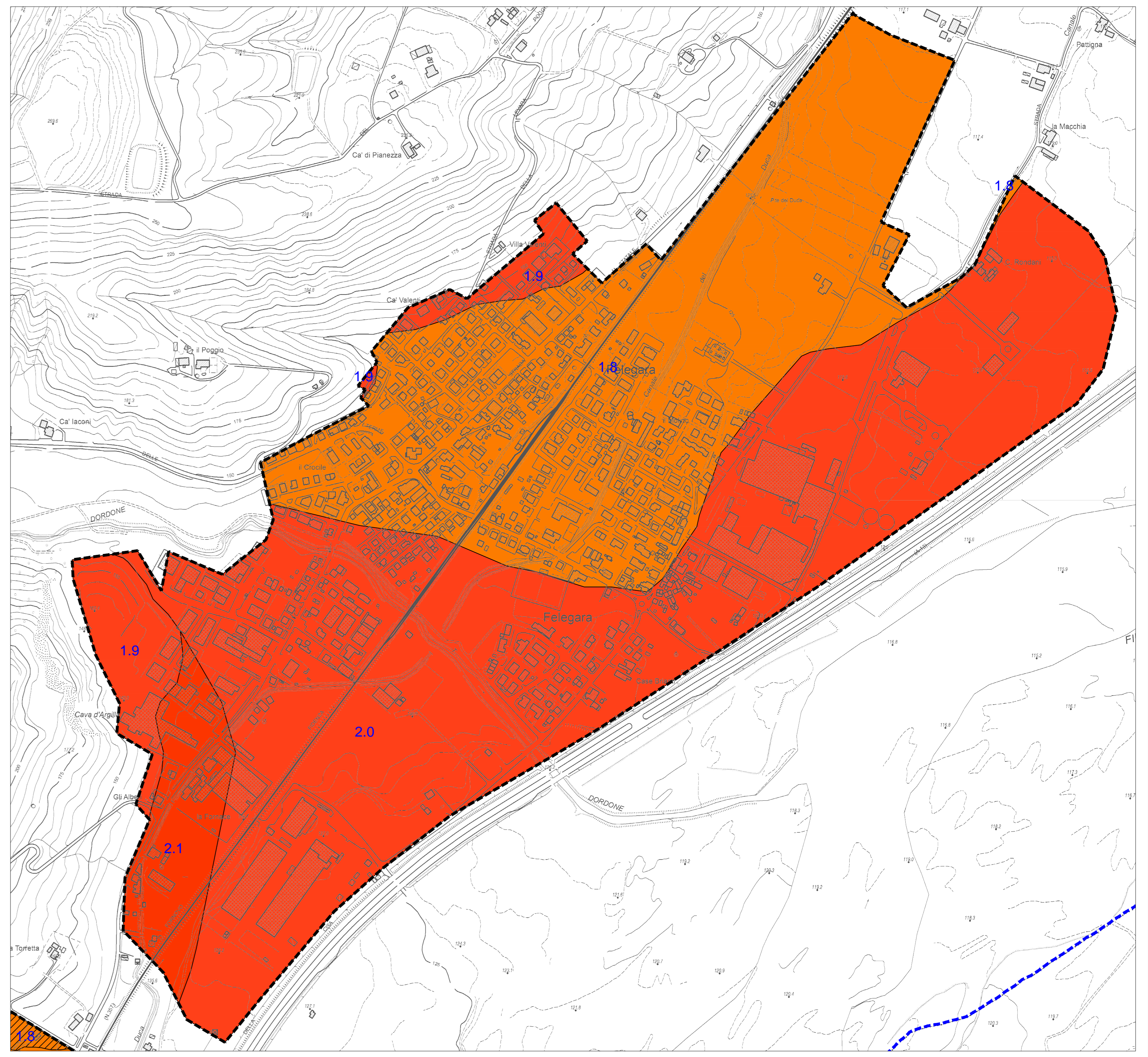
	F.A. PGA = 1.3 - 1.4
	F.A. PGA = 1.7 - 1.8
	F.A. PGA = 1.9 - 2.0
	F.A. PGA = 2.1 - 2.2

**ZONE DI ATTENZIONE PER INSTABILITÀ DI VERSANTE**

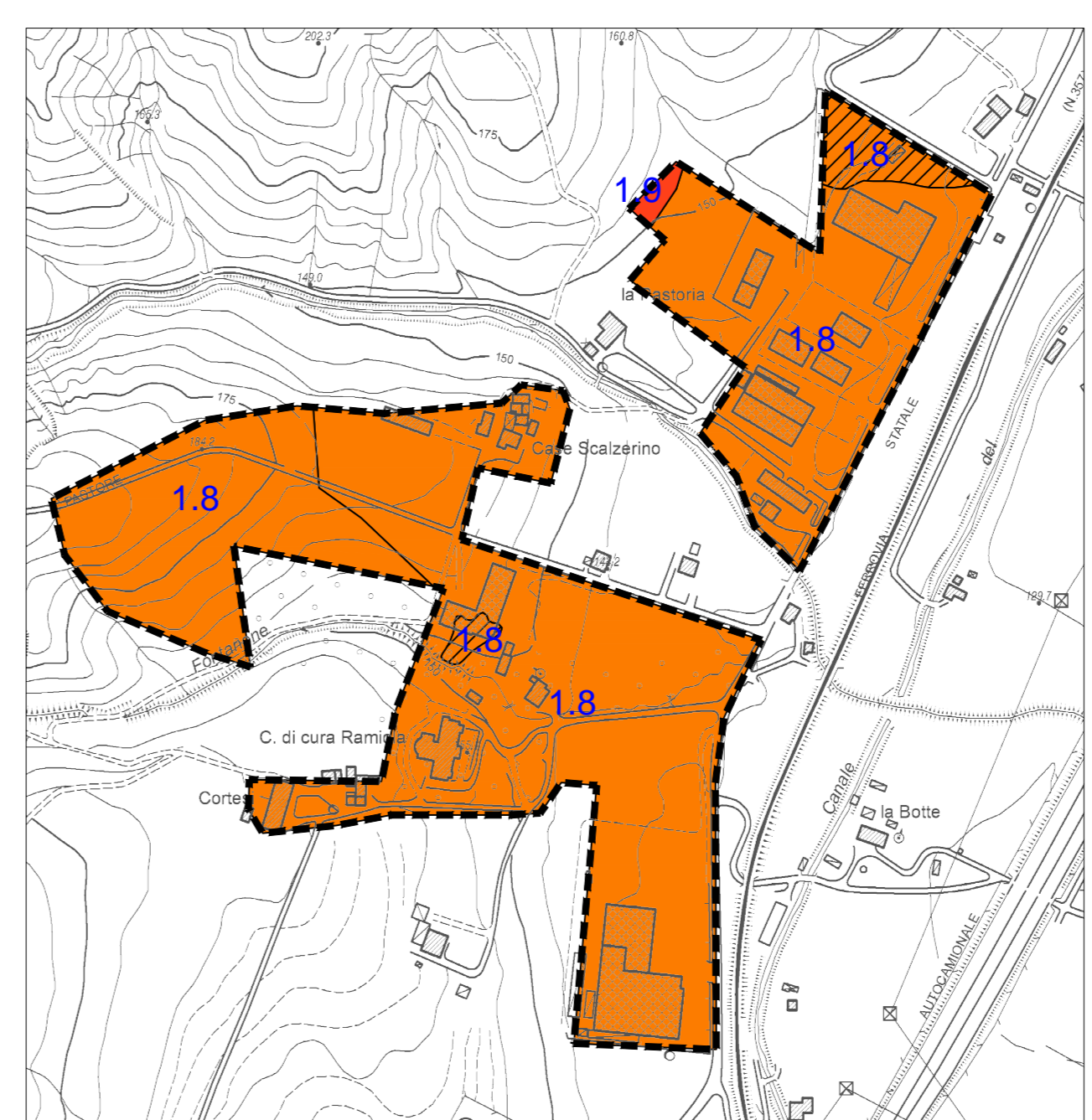
	F.A. PGA = 1.7 - 1.8 - Zona 30122013 e Zona 30242012
	F.A. PGA = 1.9 - 2.0 - Zona 30242012
	F.A. PGA = 2.1 - 2.2 - Zona 30242014



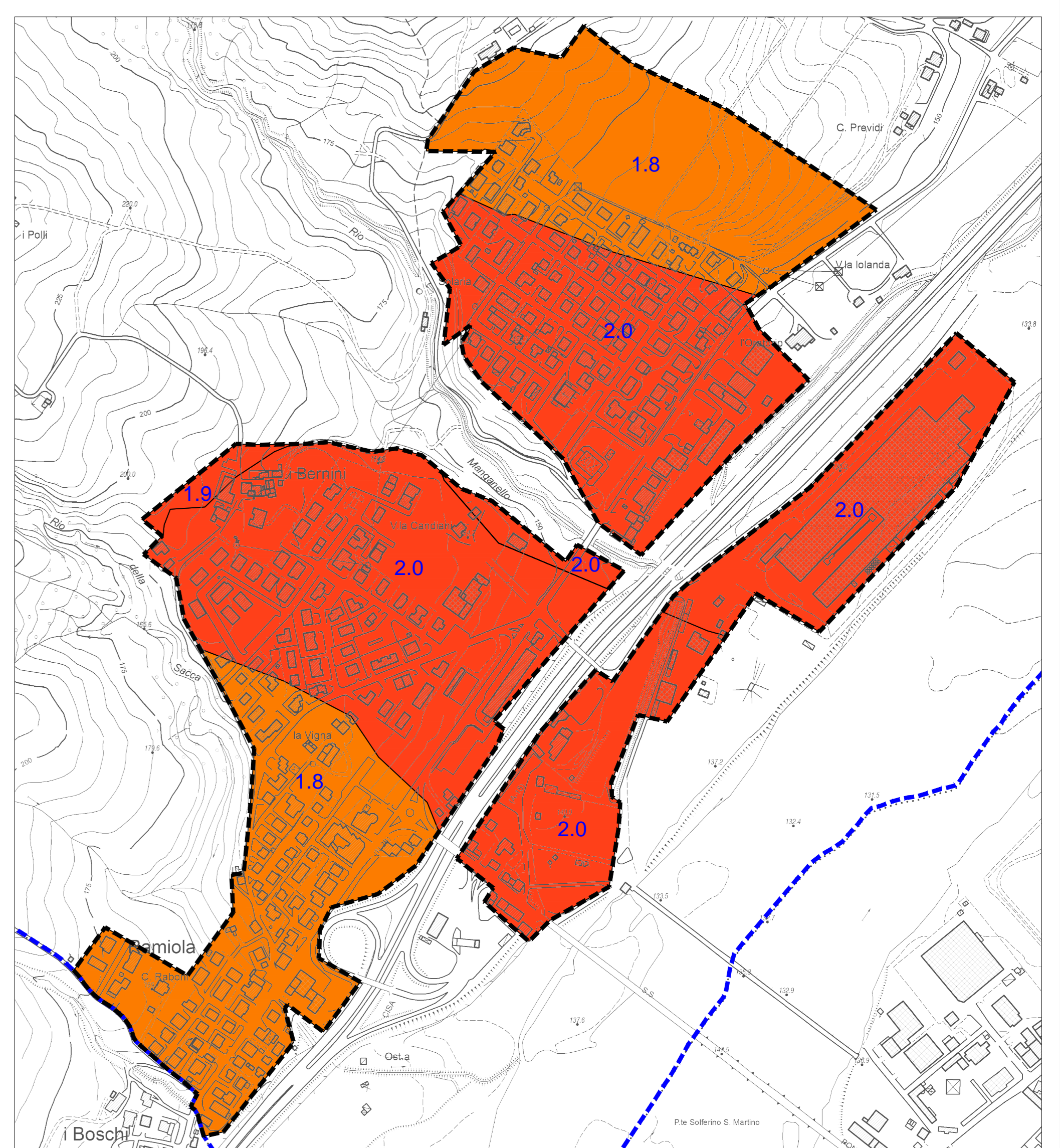
MEDESANO CAPOLUOGO (a)



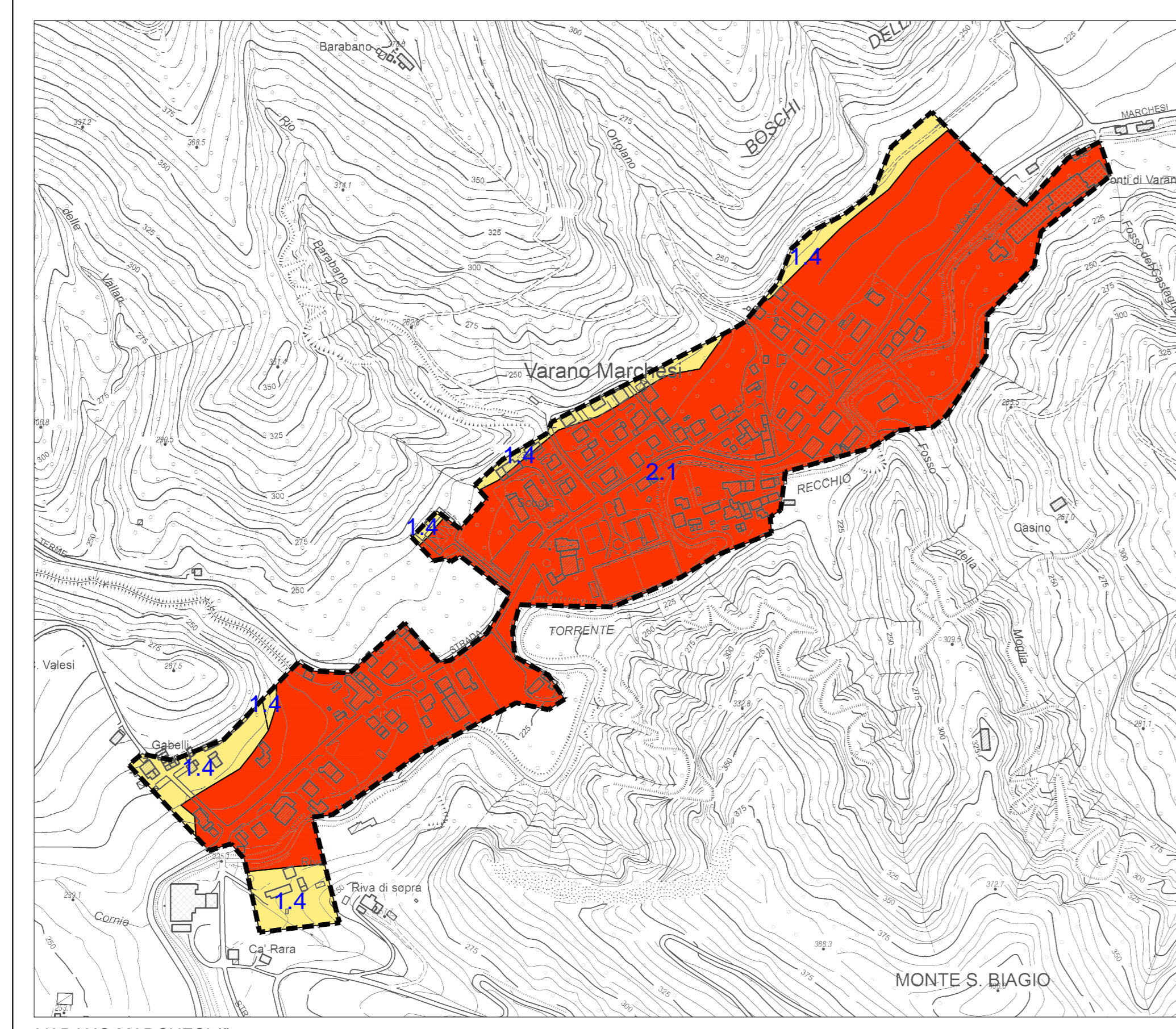
FELEGARA (b)



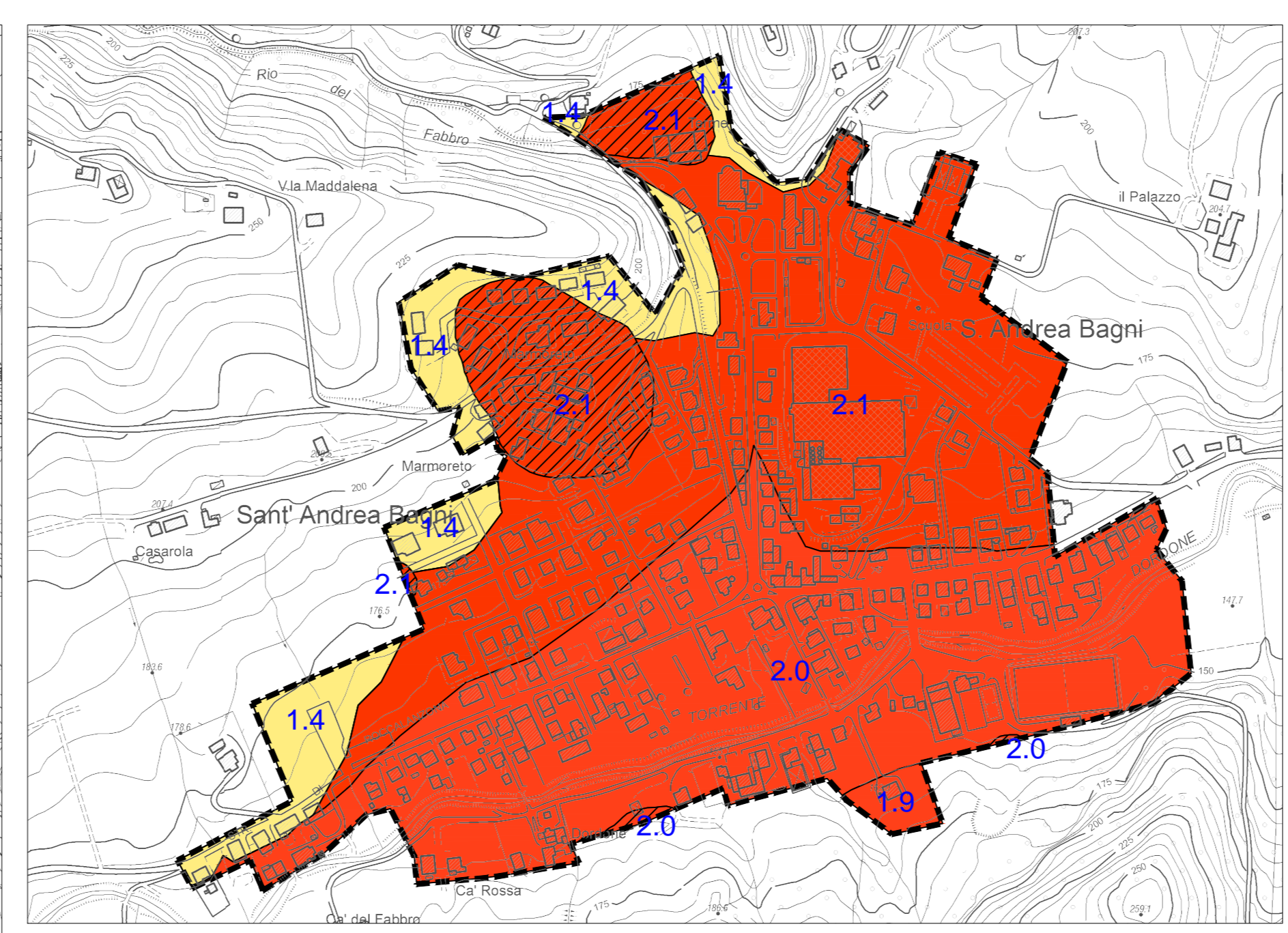
RAMIOLA (c1)



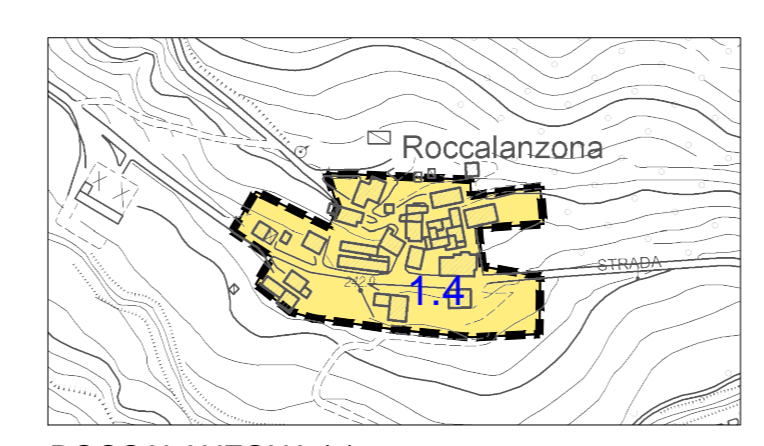
RAMIOLA (c2)



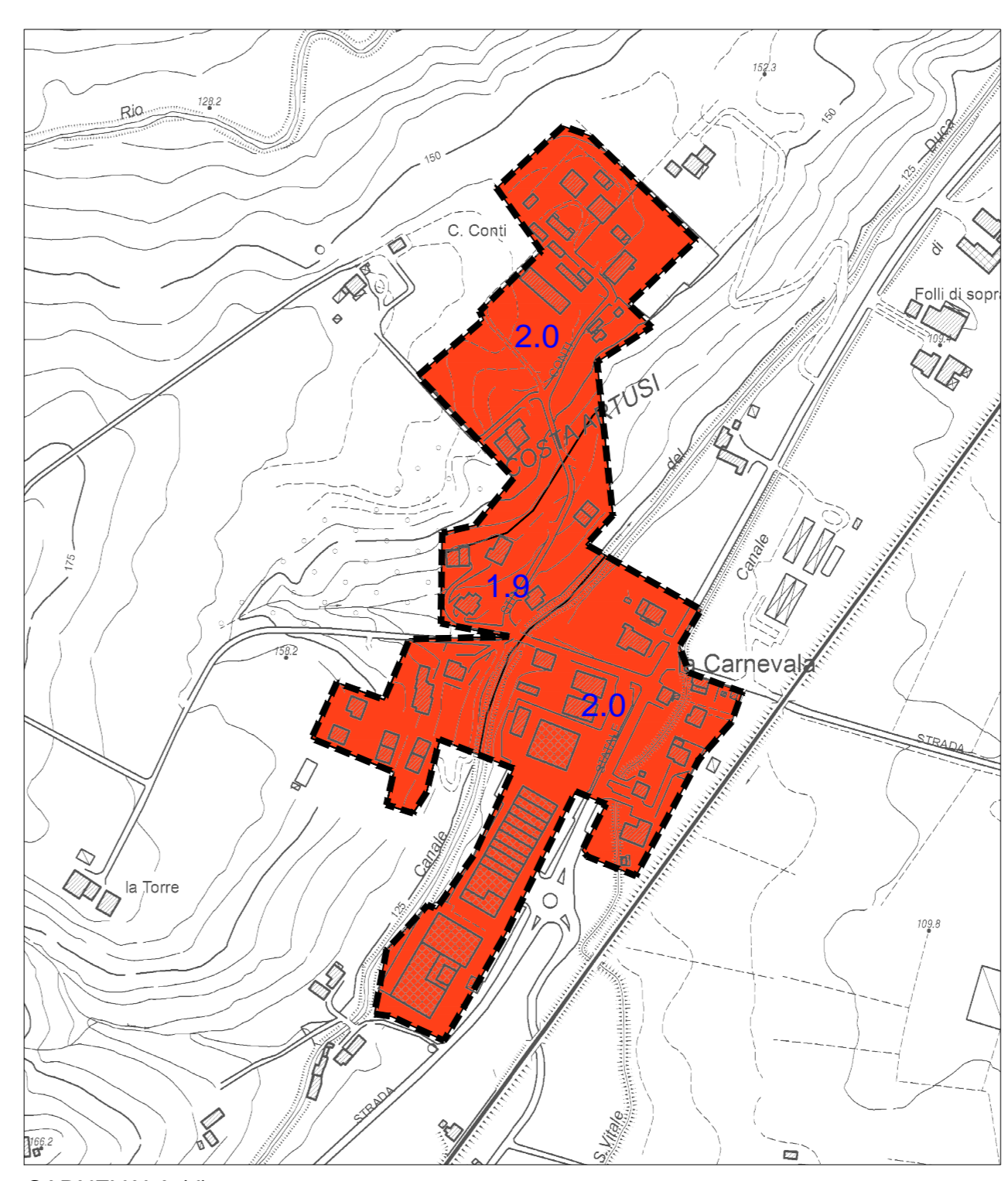
VARANO MARCHESI (f)



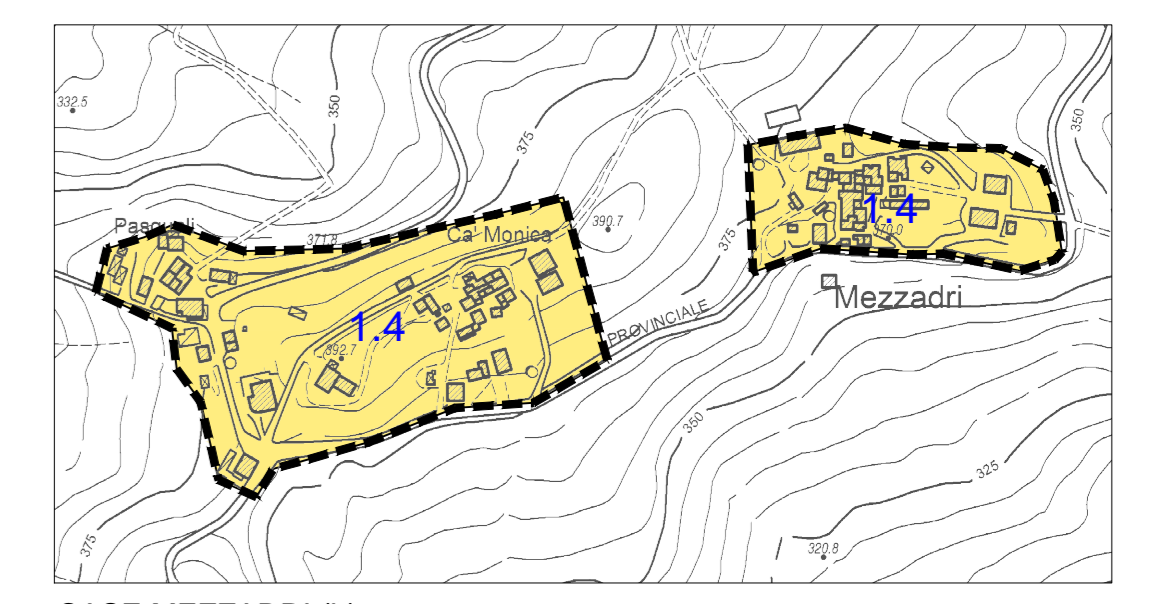
SANT'ANDREA BAGNI (e)



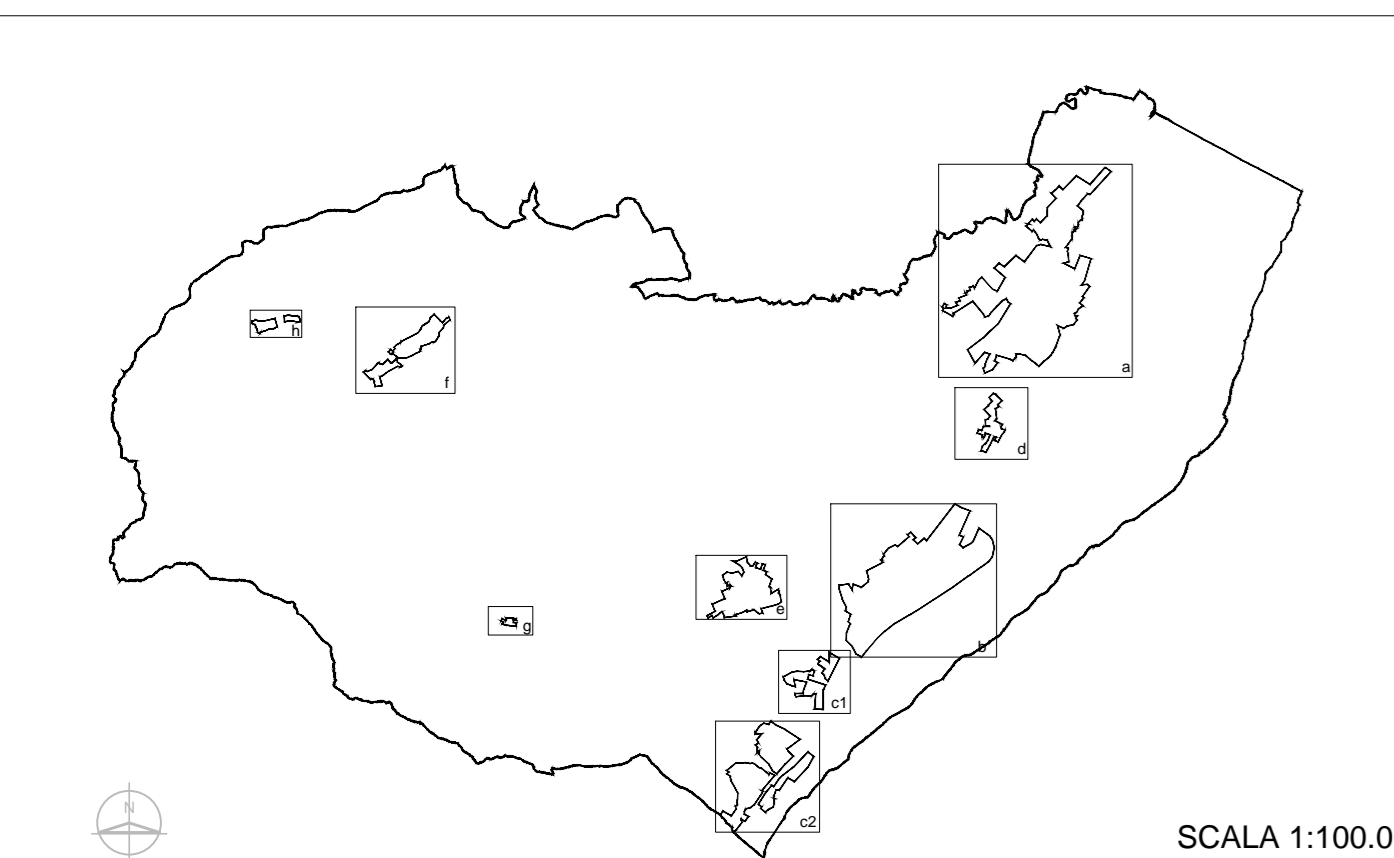
ROCCALANZONA (g)



CARNEVALA (d)



CASE MEZZADRI (h)



SCALA 1:100.000