

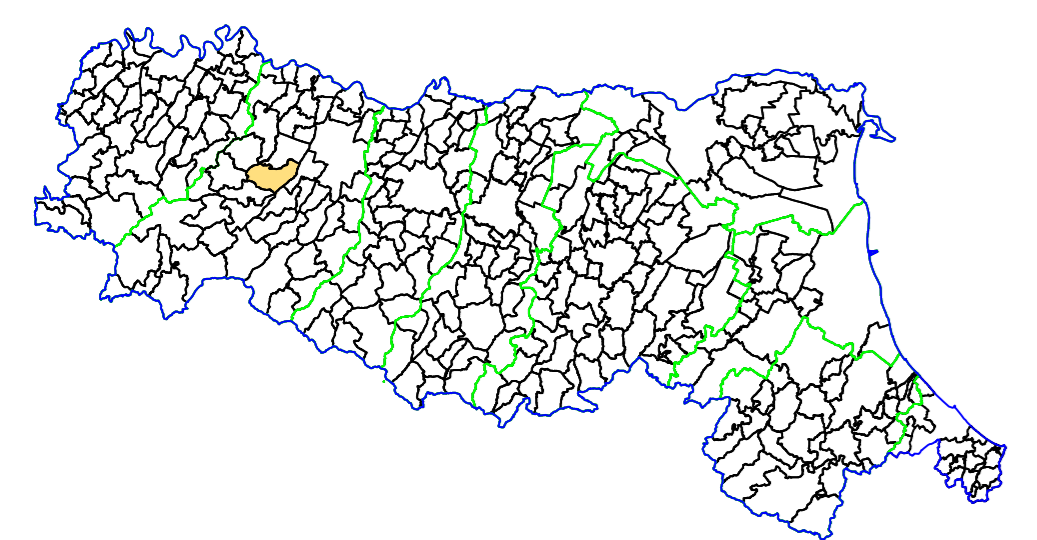
MICROZONAZIONE SISMICA

CARTA DI MICROZONAZIONE SISMICA
F.A. S11: $0.1s \leq T_0 \leq 0.5s$

scala 1 : 5.000

TAV. 07b

Regione Emilia-Romagna
Comune di Medesano



<p>Regione</p>	<p>Soggetto realizzatore</p> <p>AMBITER S.p.A. <small>Officina di ingegneria sismica</small> Via Mezzadri, 5/A - 41123 Parma (PR) Tel. 0521 942420 - Fax 0521 942421 e-mail: info@ambiter.it PEC: ambiter@pec.ambiter.it</p> 	<p>Data</p> <p>maggio 2018</p>
----------------	--	--------------------------------

LEGENDA

--- Ambito interessato dallo studio di microzonazione sismica

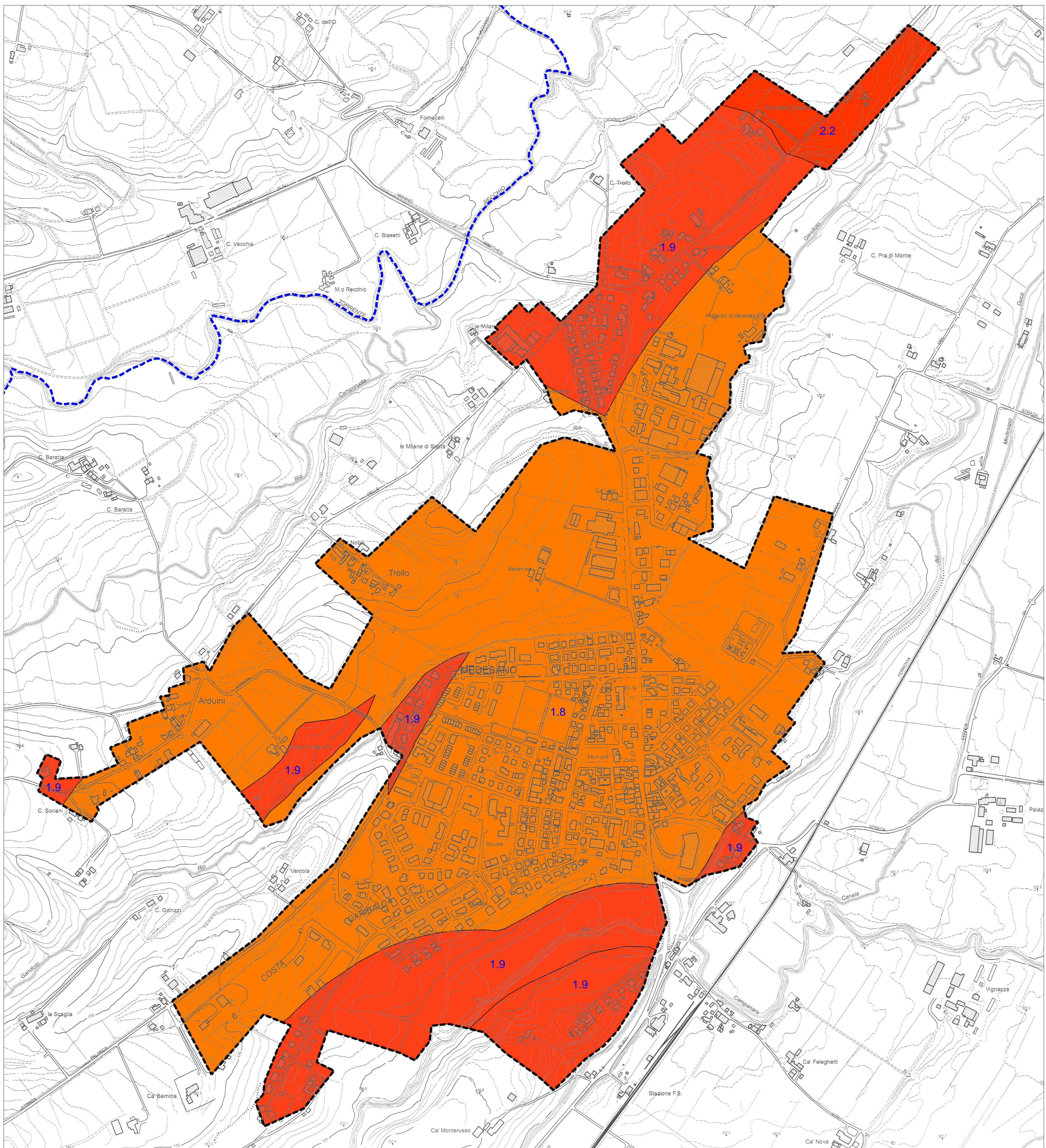
--- Confine comunale

ZONE STABILI SUSCETTIBILI DI AMPLIFICAZIONI LOCALI

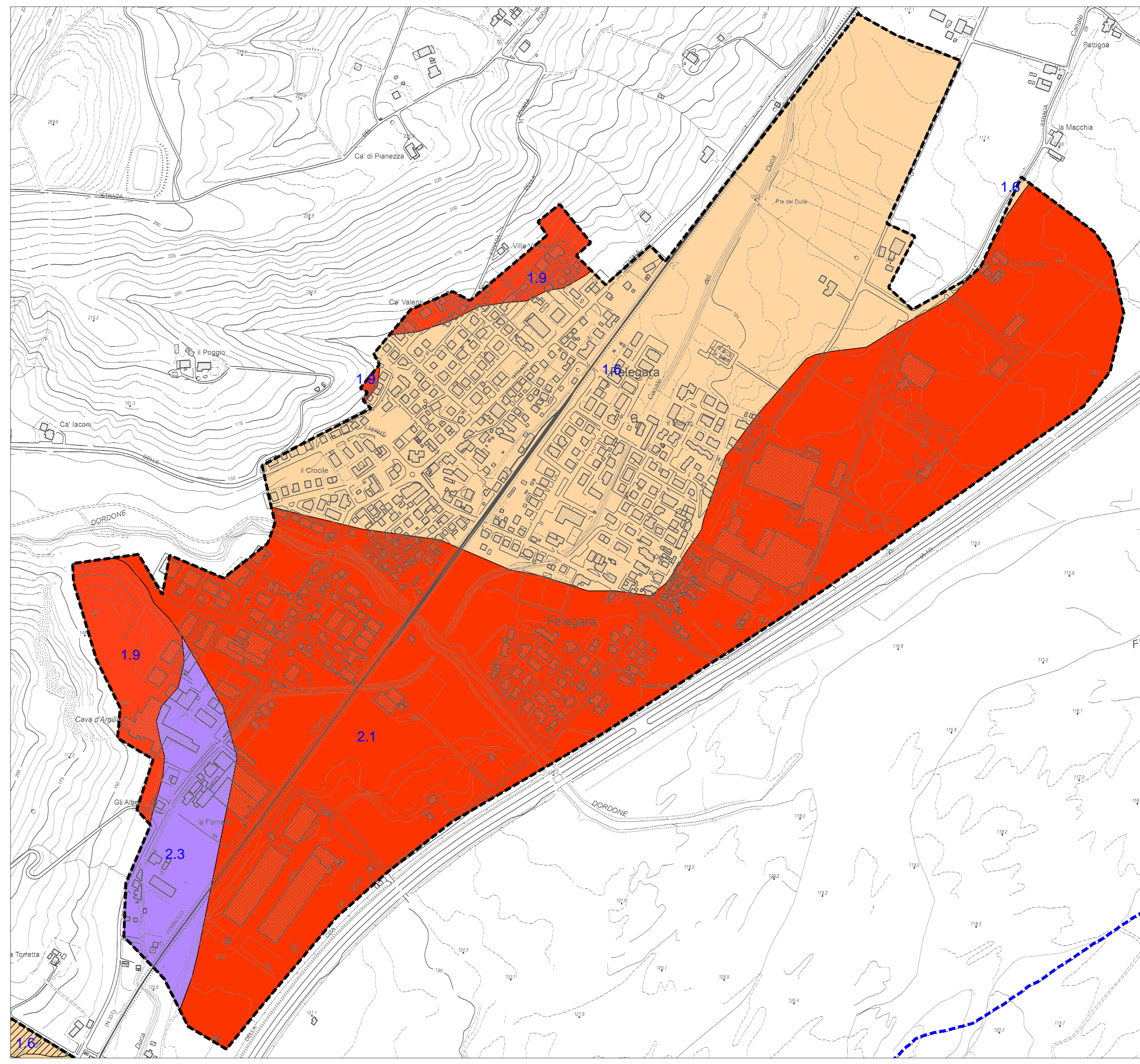
	F.A. S11 = 1.3 - 1.4
	F.A. S11 = 1.5 - 1.6
	F.A. S11 = 1.7 - 1.8
	F.A. S11 = 1.9 - 2.0
	F.A. S11 = 2.1 - 2.2
	F.A. S11 = 2.3 - 2.4

ZONE DI ATTENZIONE PER INSTABILITÀ DI VERSANTE

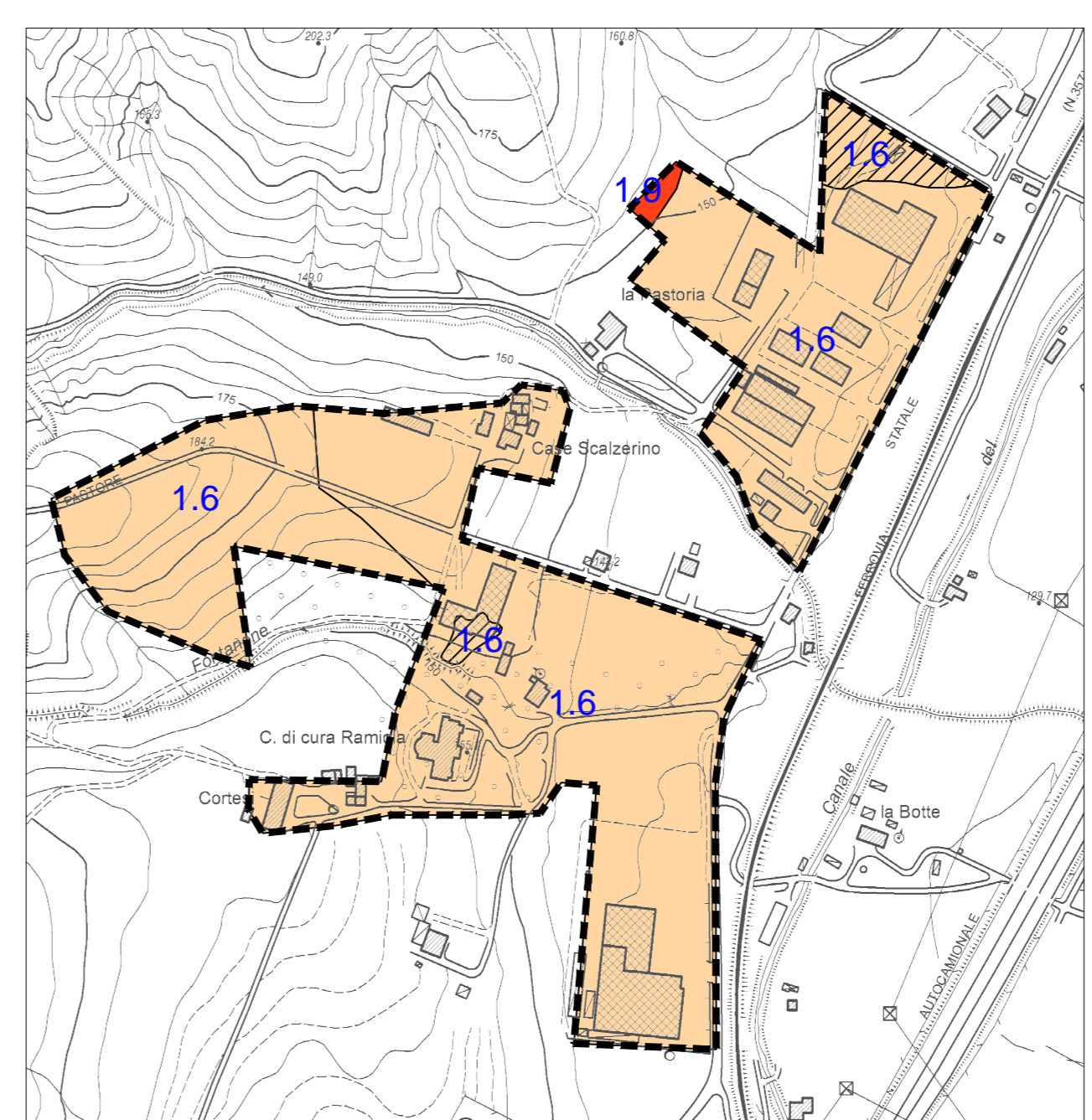
	F.A. S11 = 1.5 - 1.6 - Zona 30122013 e Zona 30242012
	F.A. S11 = 1.9 - 2.0 - Zona 30242012
	F.A. S11 = 2.3 - 2.4 - Zona 30242014



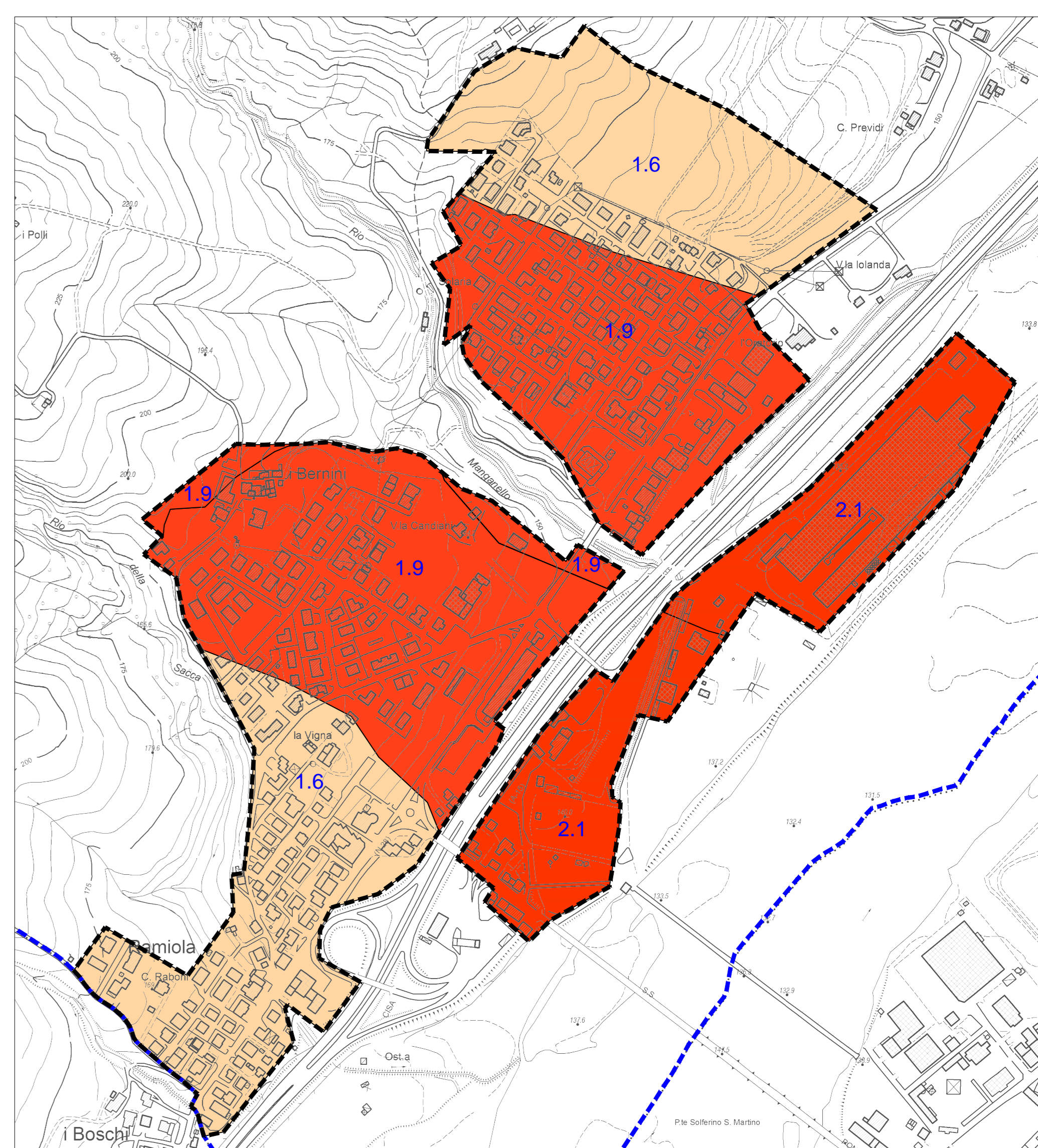
MEDESANO CAPOLUOGO (a)



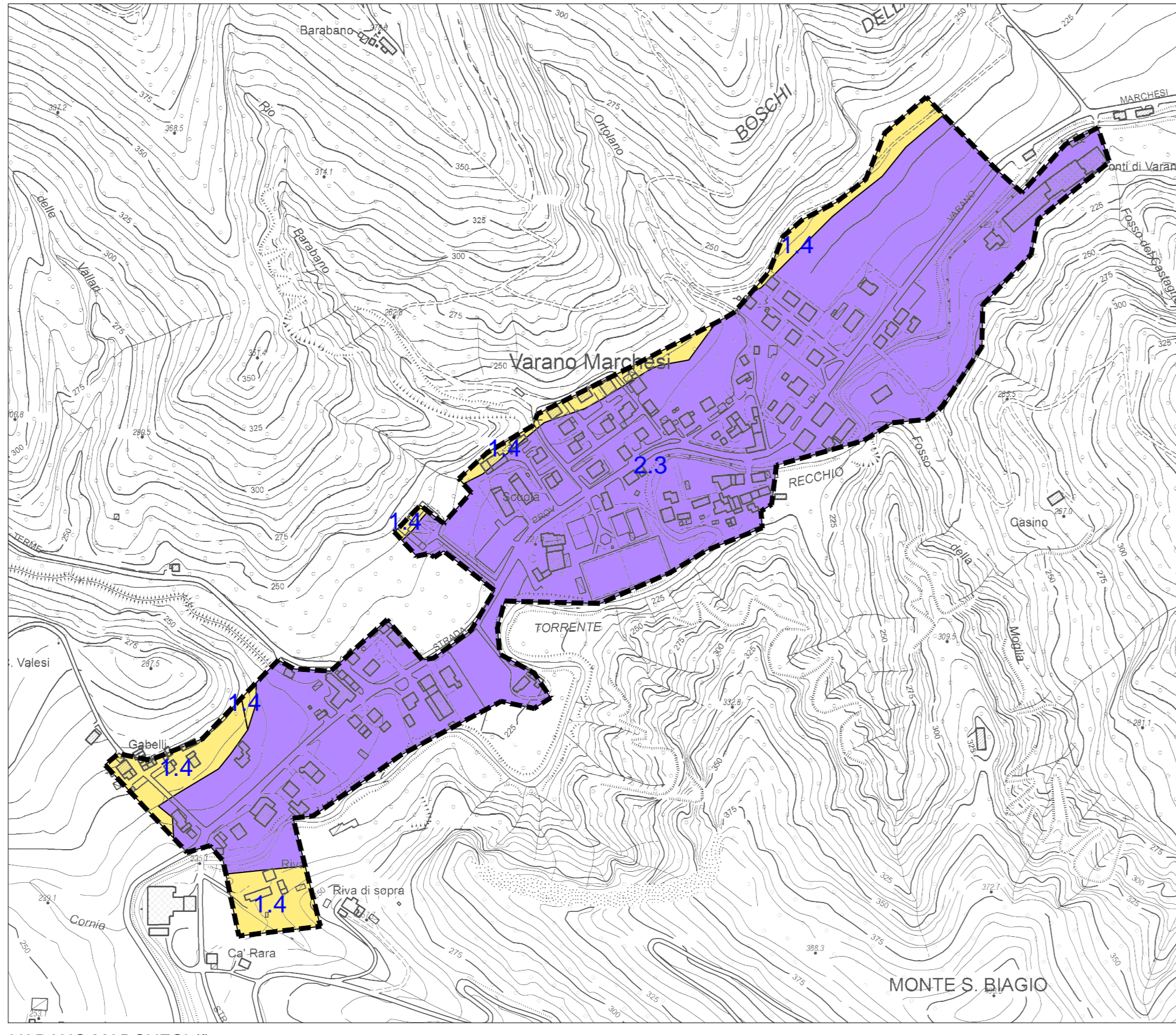
FELEGARA (b)



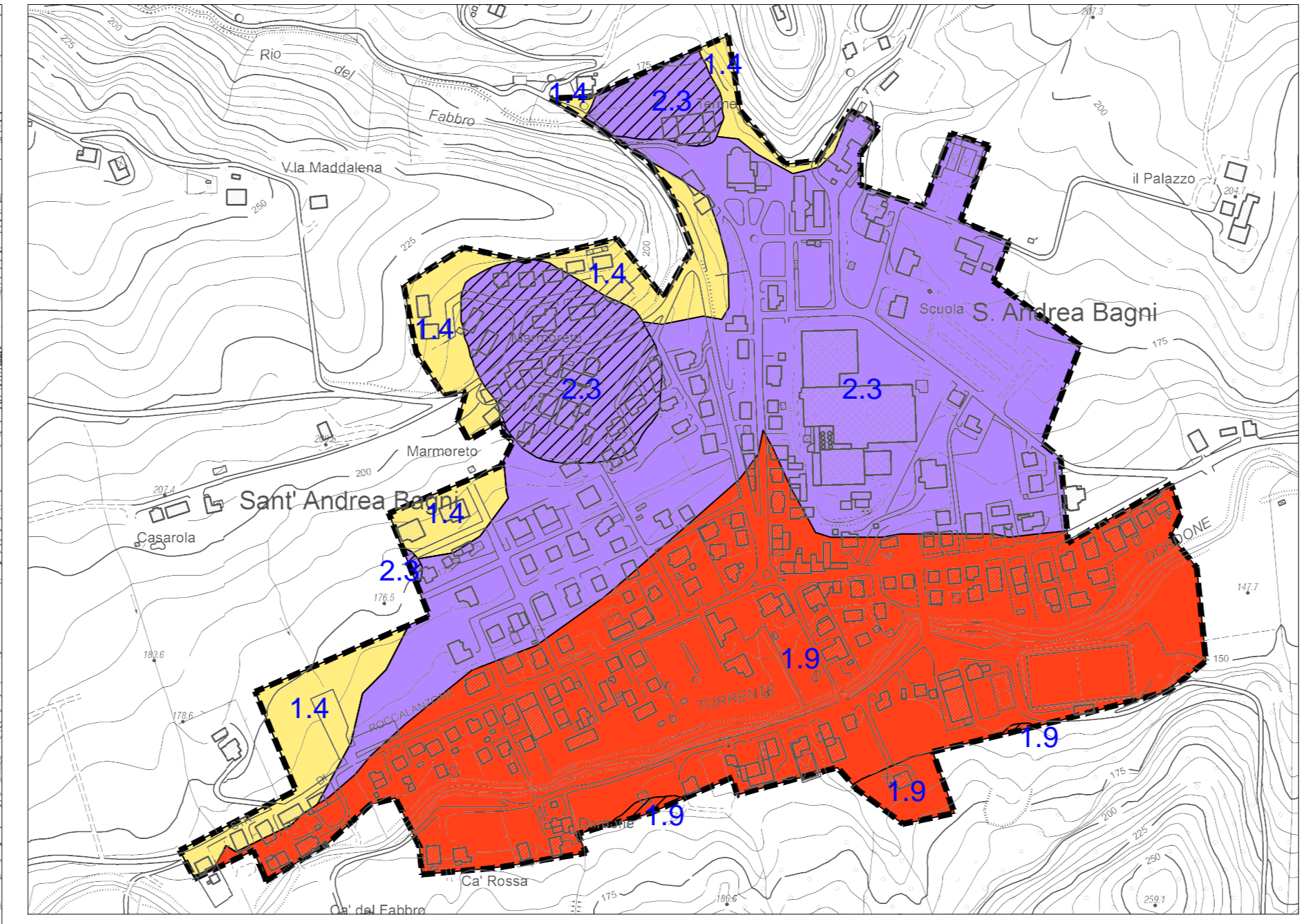
RAMIOLA (c1)



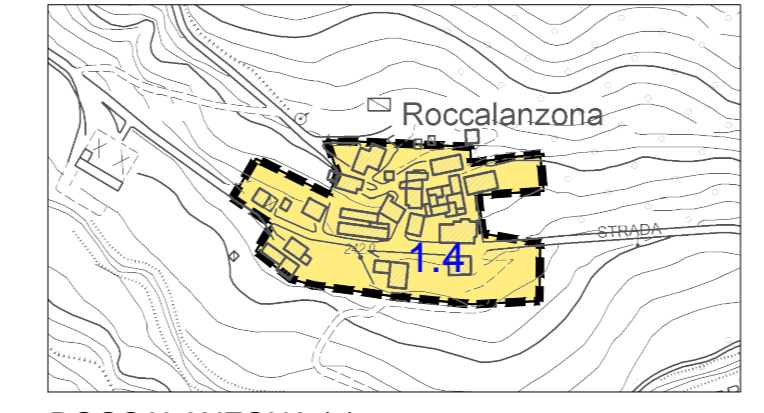
RAMIOLA (c2)



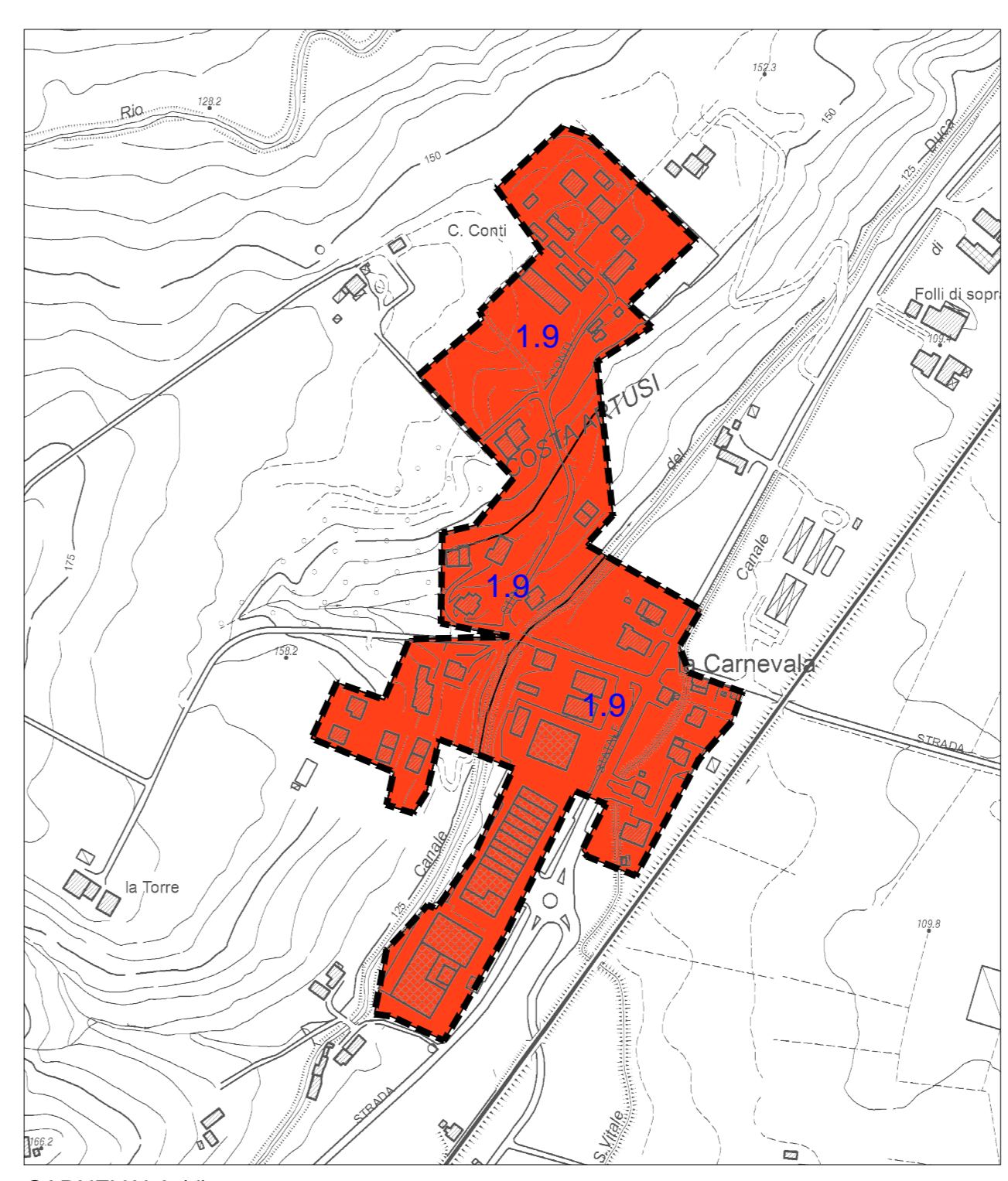
VARANO MARCHESI (f)



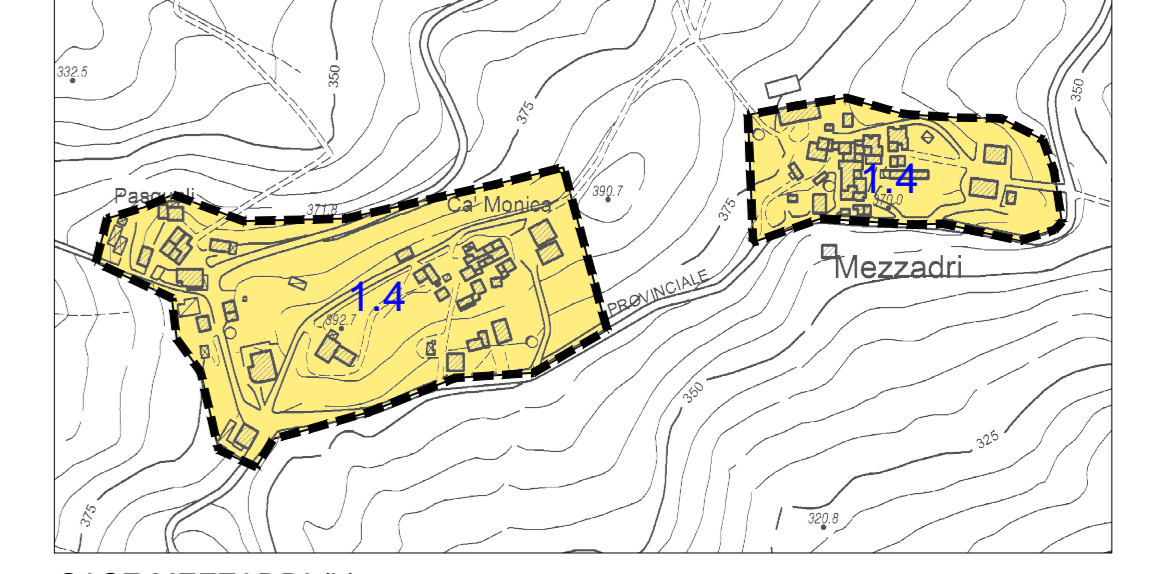
SANT'ANDREA BAGNI (e)



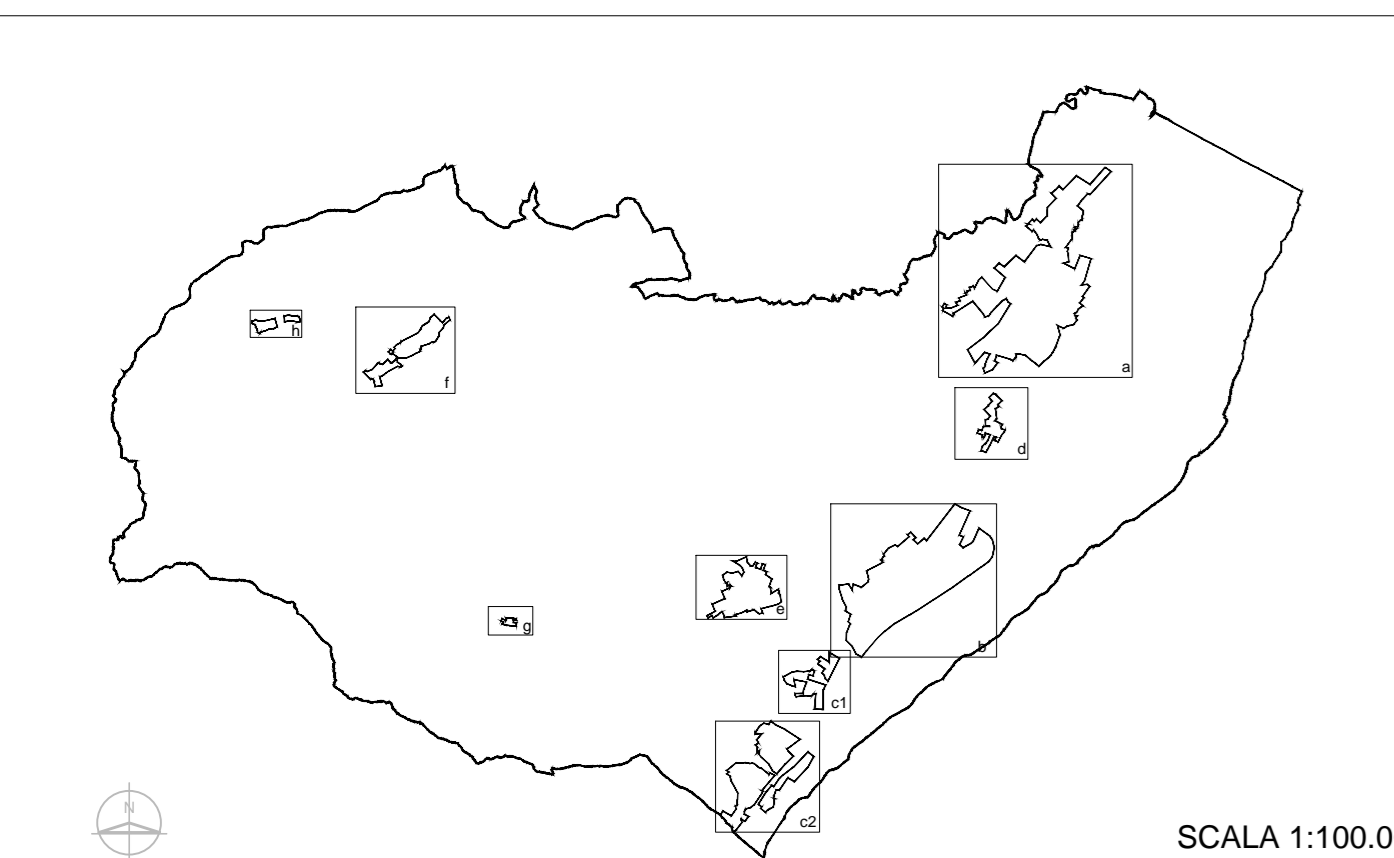
ROCCALANZONA (g)



CARNEVALA (d)



CASE MEZZADRI (h)



SCALA 1:100.000