

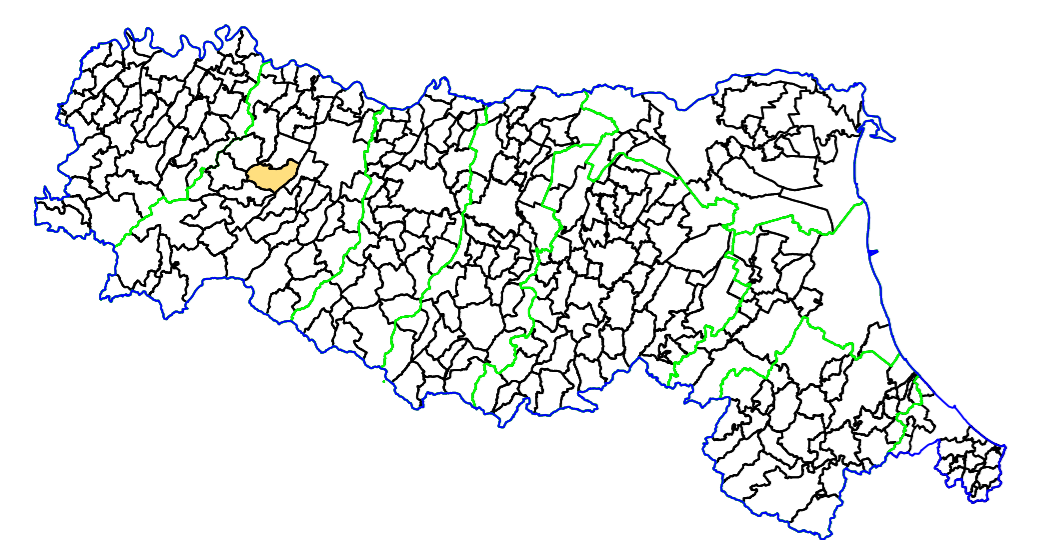
MICROZONAZIONE SISMICA

CARTA DI MICROZONAZIONE SISMICA
F.A. S12: 0.5s ≤ T0 ≤ 1.0s

scala 1 : 5.000

TAV. 07c

Regione Emilia-Romagna
Comune di Medesano



<p>Regione</p> 	<p>Soggetto realizzatore</p> <p>AMBITER S.p.A. Via Medesano, 5/A - 41028 Ravenna (RN) Tel. 0521 942620 - Fax 0521 942621 e-mail: info@ambiter.it www.ambiter.it</p>	<p>Data</p> <p>maggio 2018</p>
--	--	--------------------------------

LEGENDA

--- Ambito interessato dallo studio di microzonazione sismica

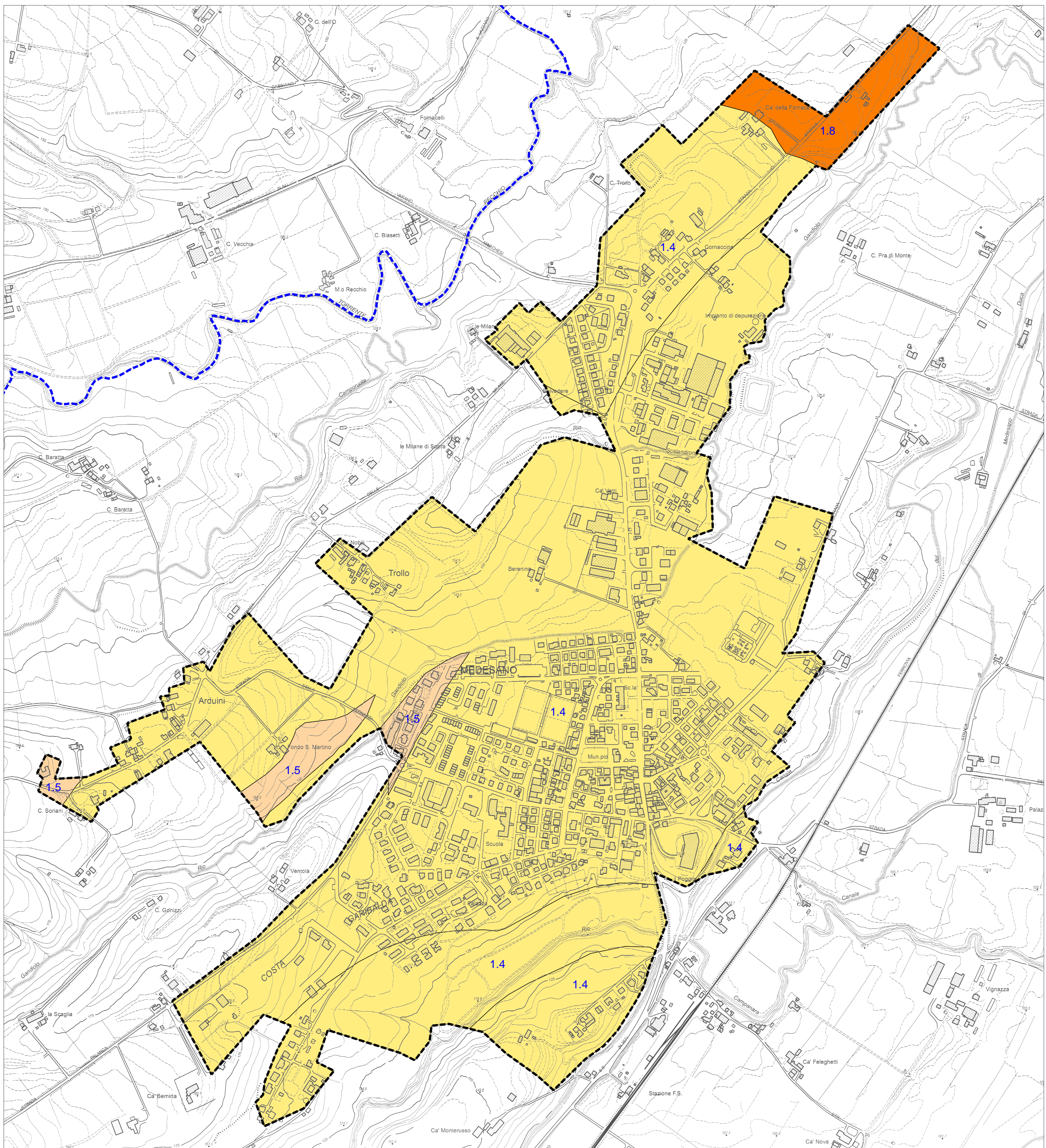
--- Confine comunale

ZONE STABILI SUSCETTIBILI DI AMPLIFICAZIONI LOCALI

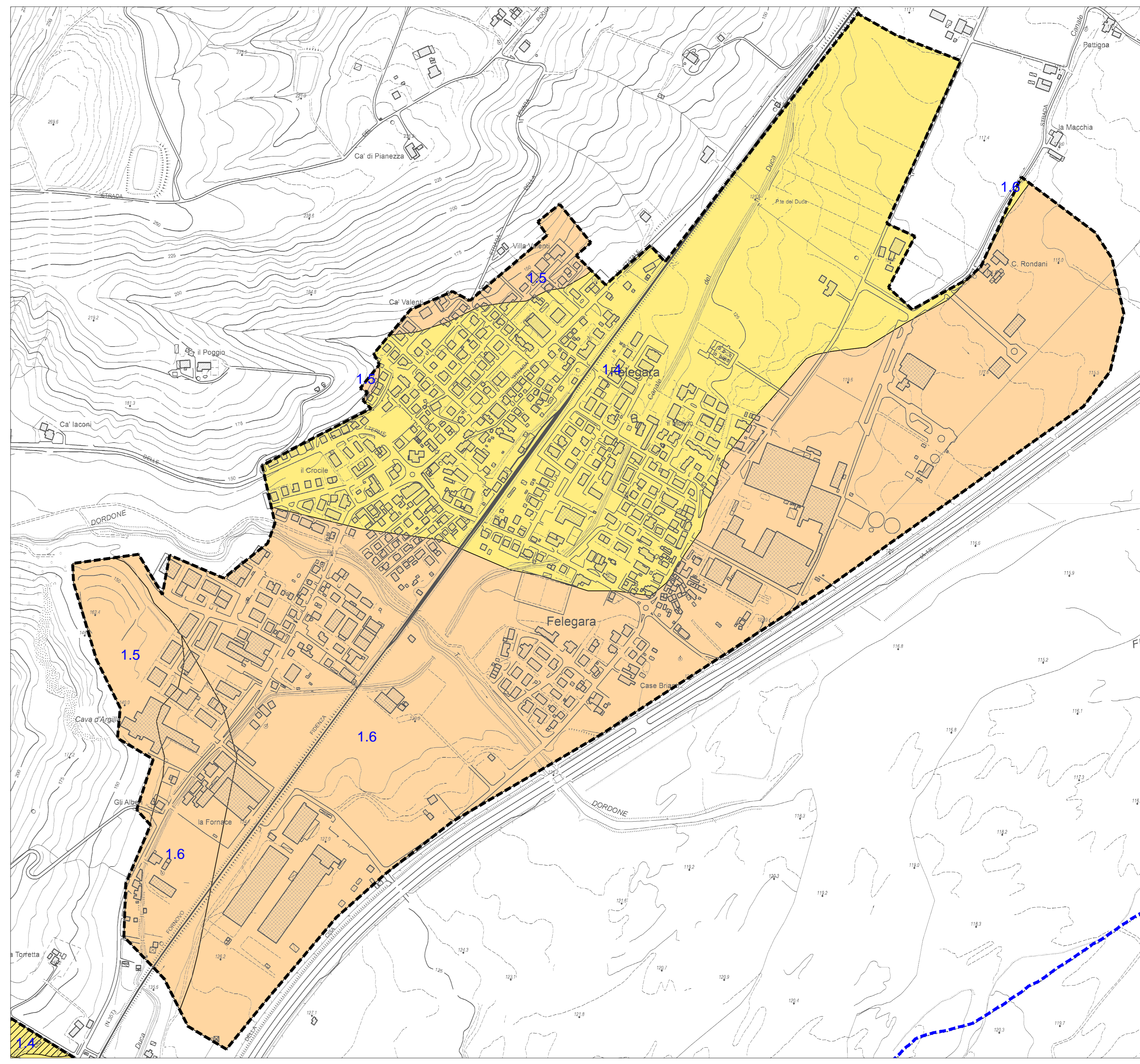
- F.A. S12 = 1.3 - 1.4
- F.A. S12 = 1.5 - 1.6
- F.A. S12 = 1.7 - 1.8

ZONE DI ATTENZIONE PER INSTABILITÀ DI VERSANTE

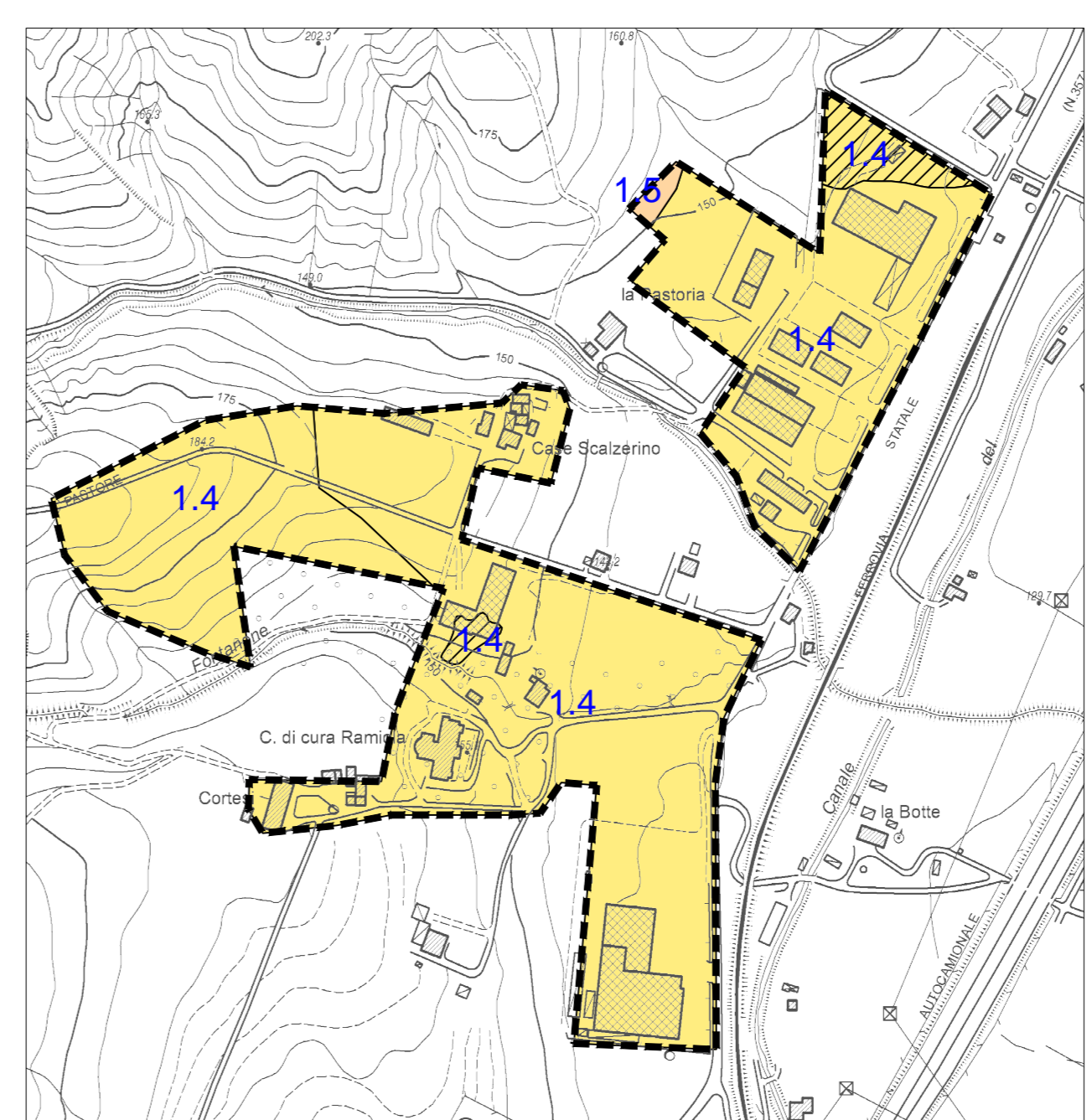
- F.A. S12 = 1.3 - 1.4 - Zona 30122013 e Zona 30242012
- F.A. S12 = 1.5 - 1.6 - Zona 30242014



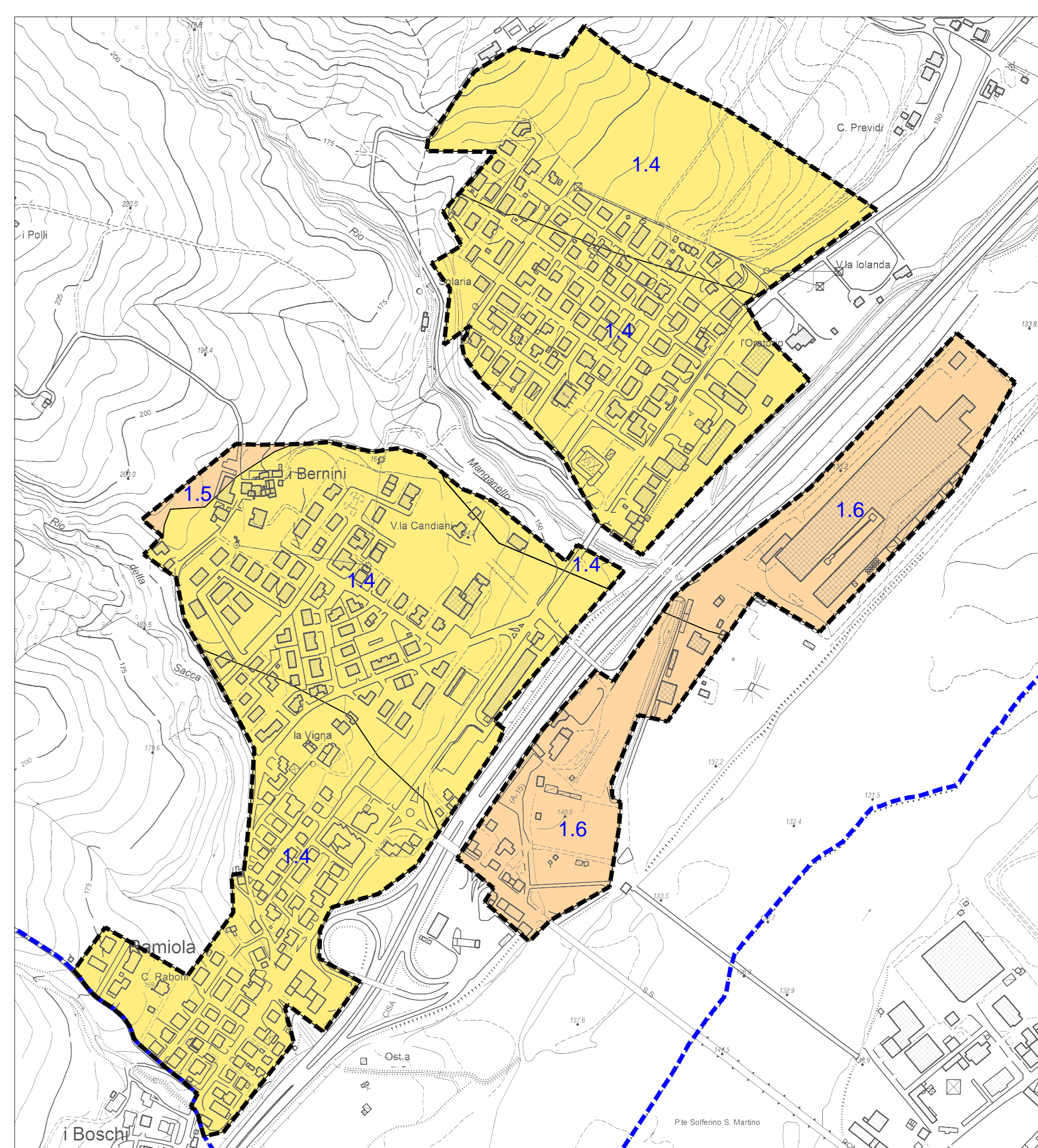
MEDESANO CAPOLUOGO (a)



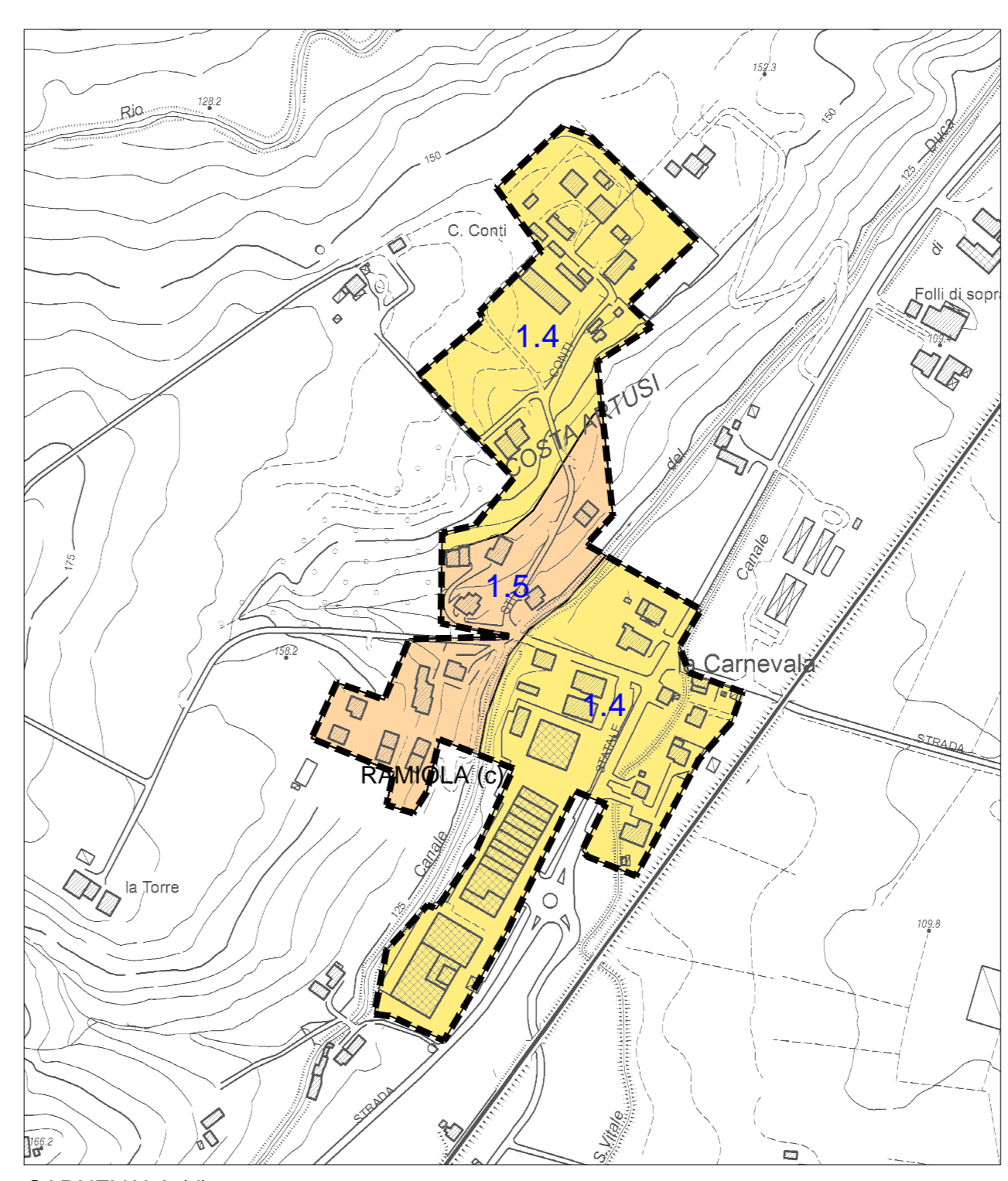
FELEGARA (b)



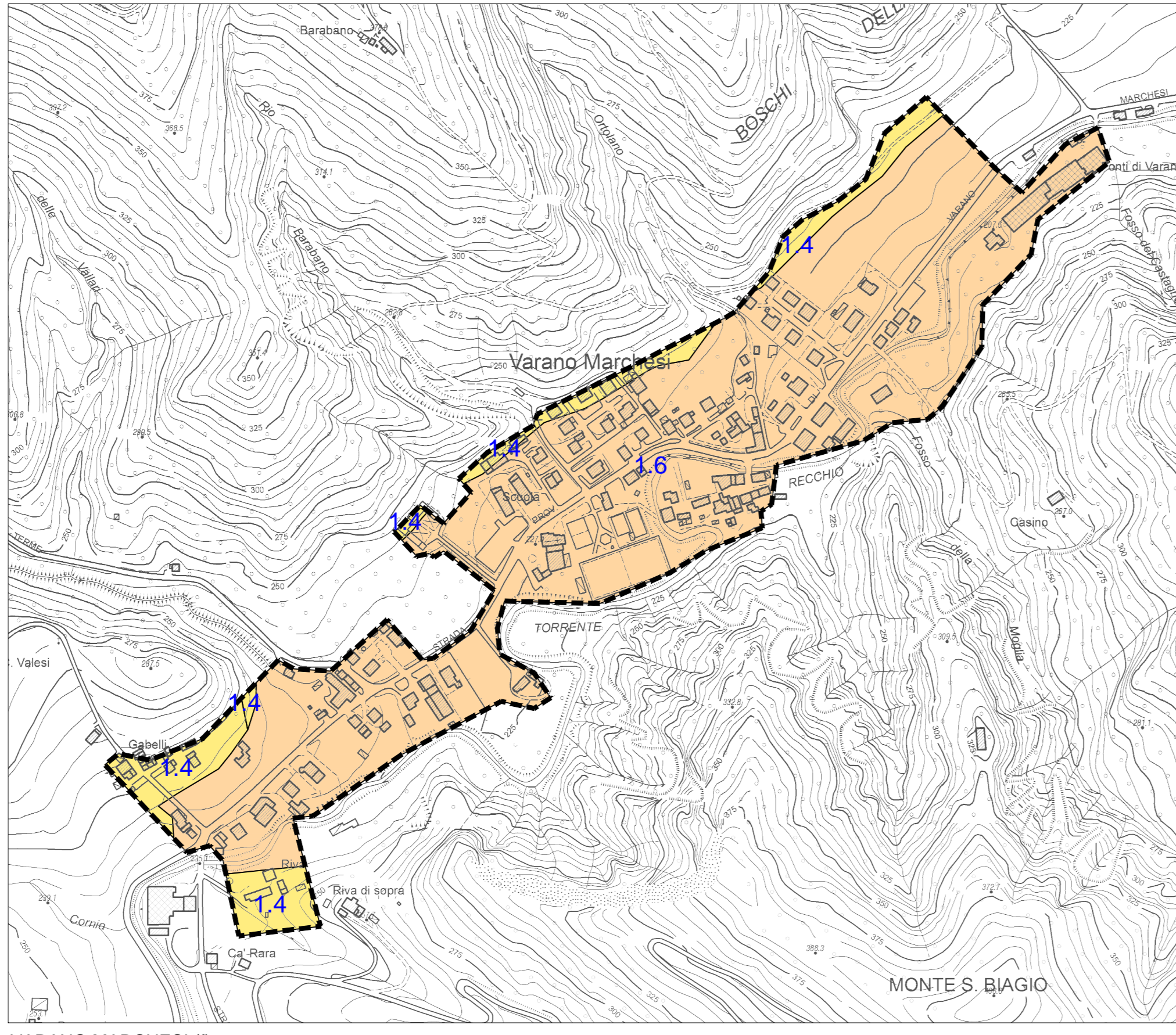
RAMIOLA (c1)



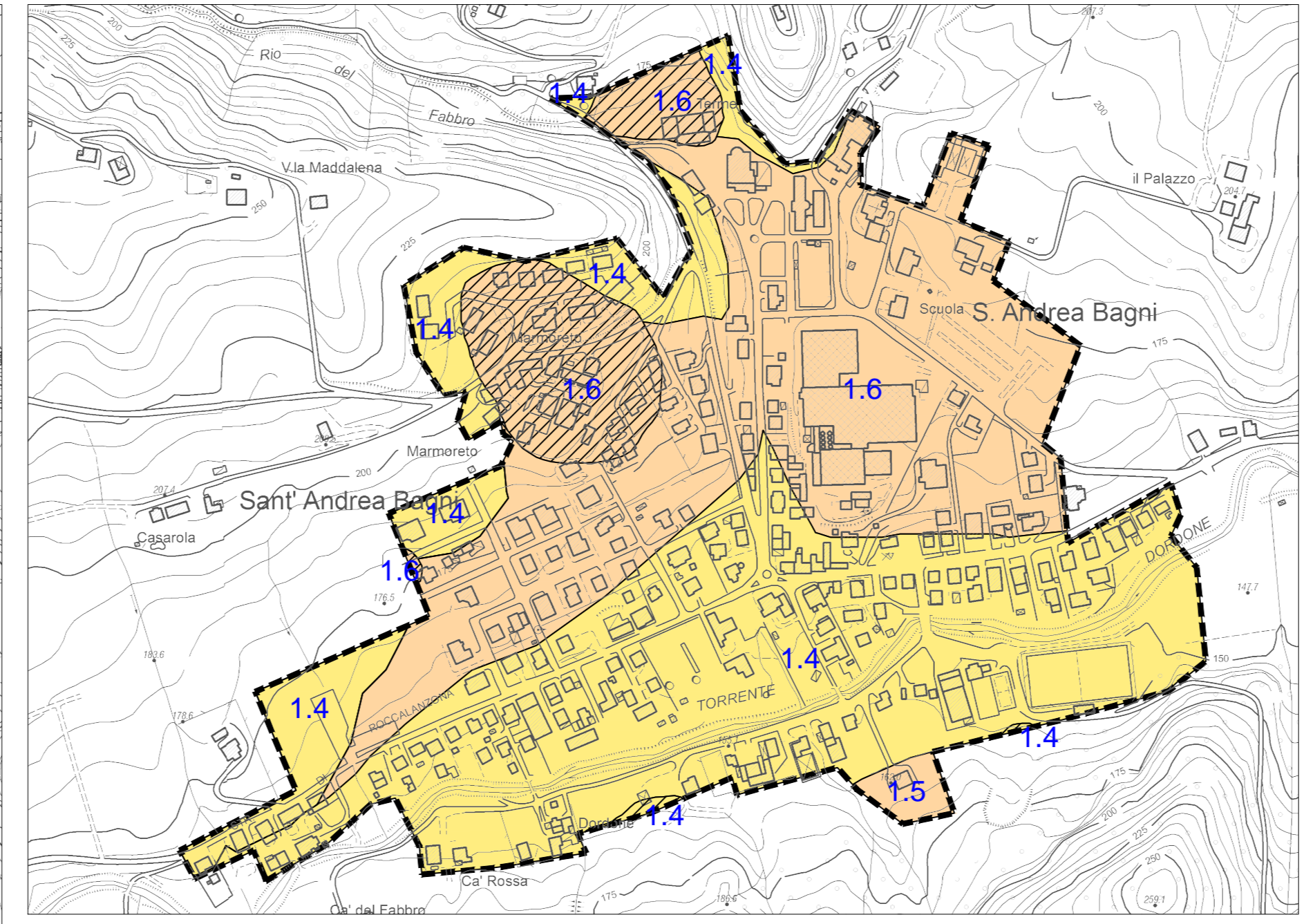
RAMIOLA (c2)



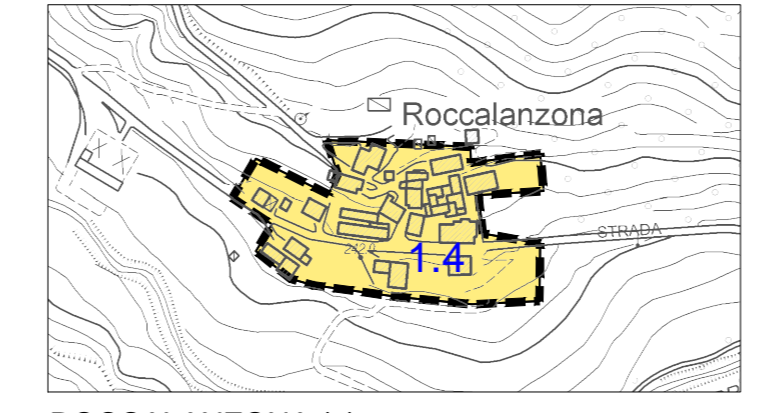
CARNEVALA (d)



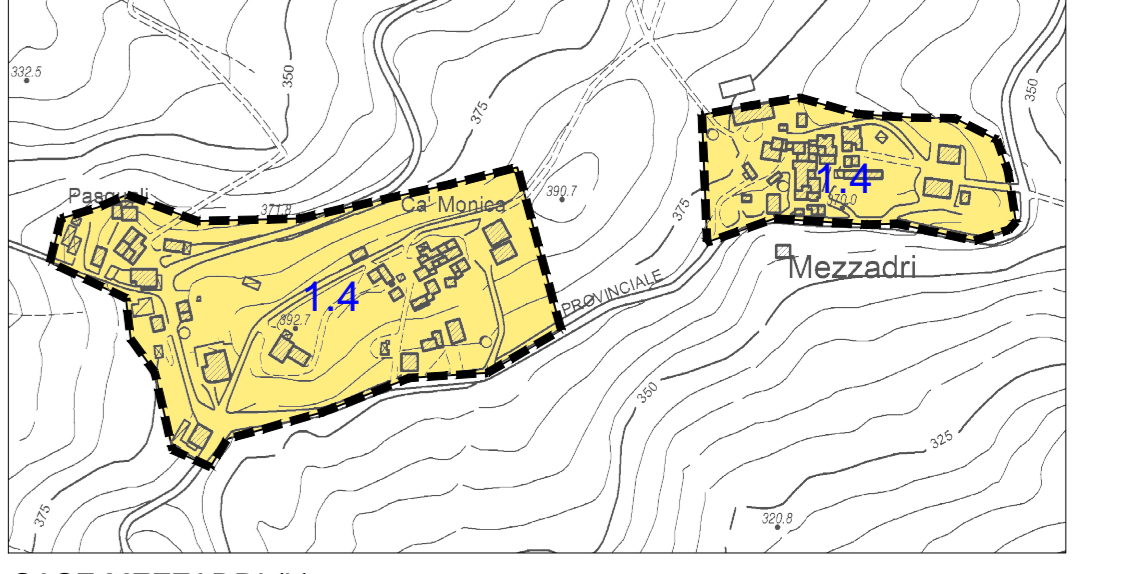
VARANO MARCHESI (f)



SANT'ANDREA BAGNI (e)



ROCCALANZONA (g)



CASE MEZZADRI (h)

SCALA 1:100.000