



PROTEZIONE CIVILE
Presidenza del Consiglio dei Ministri
Dipartimento della Protezione Civile



CONFERENZA DELLE REGIONI E
DELLE PROVINCE AUTONOME

Attuazione dell'articolo 11 della legge 24 giugno 2009, n. 77

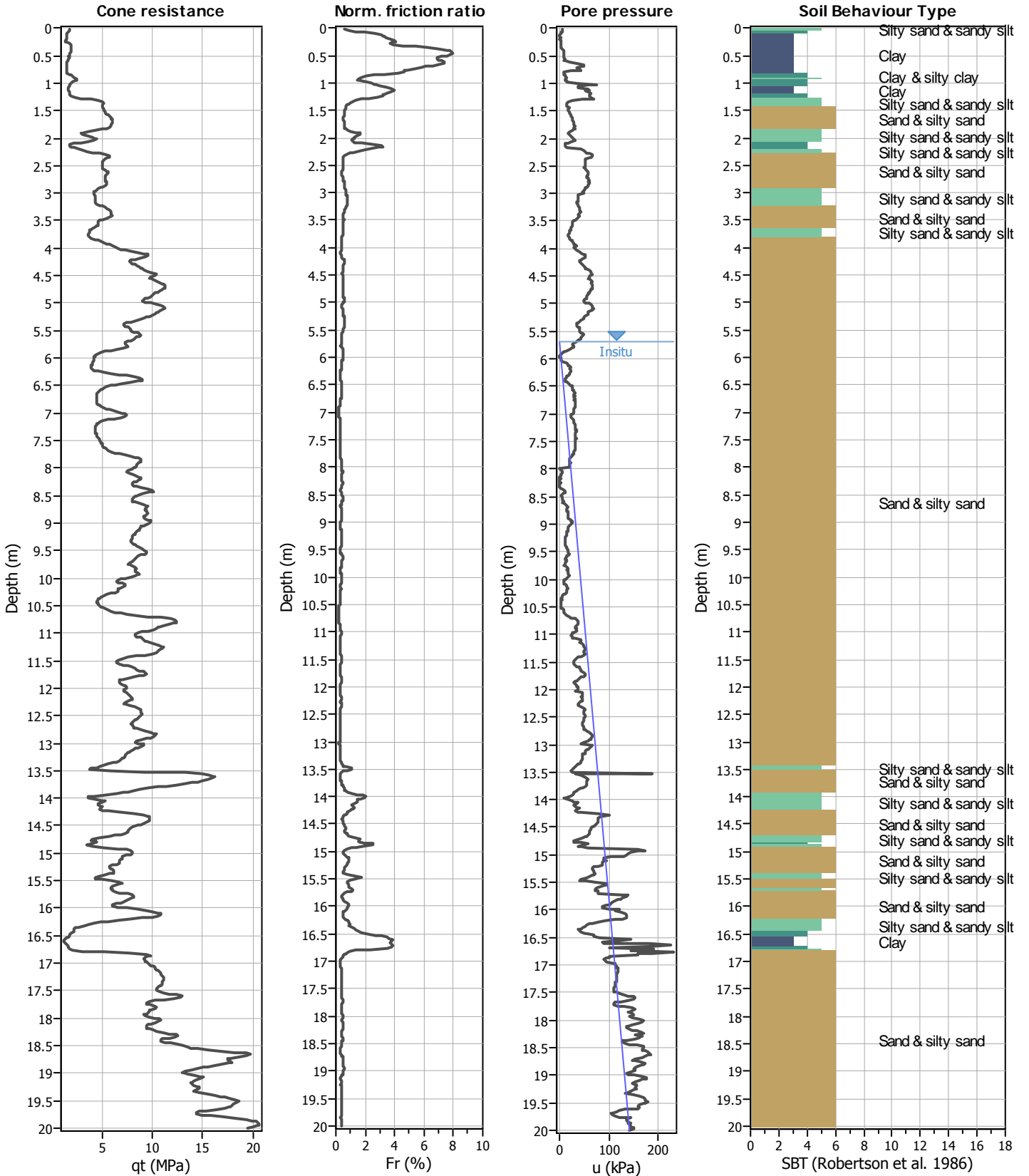
MICROZONAZIONE SISMICA

Verifiche del rischio di liquefazione

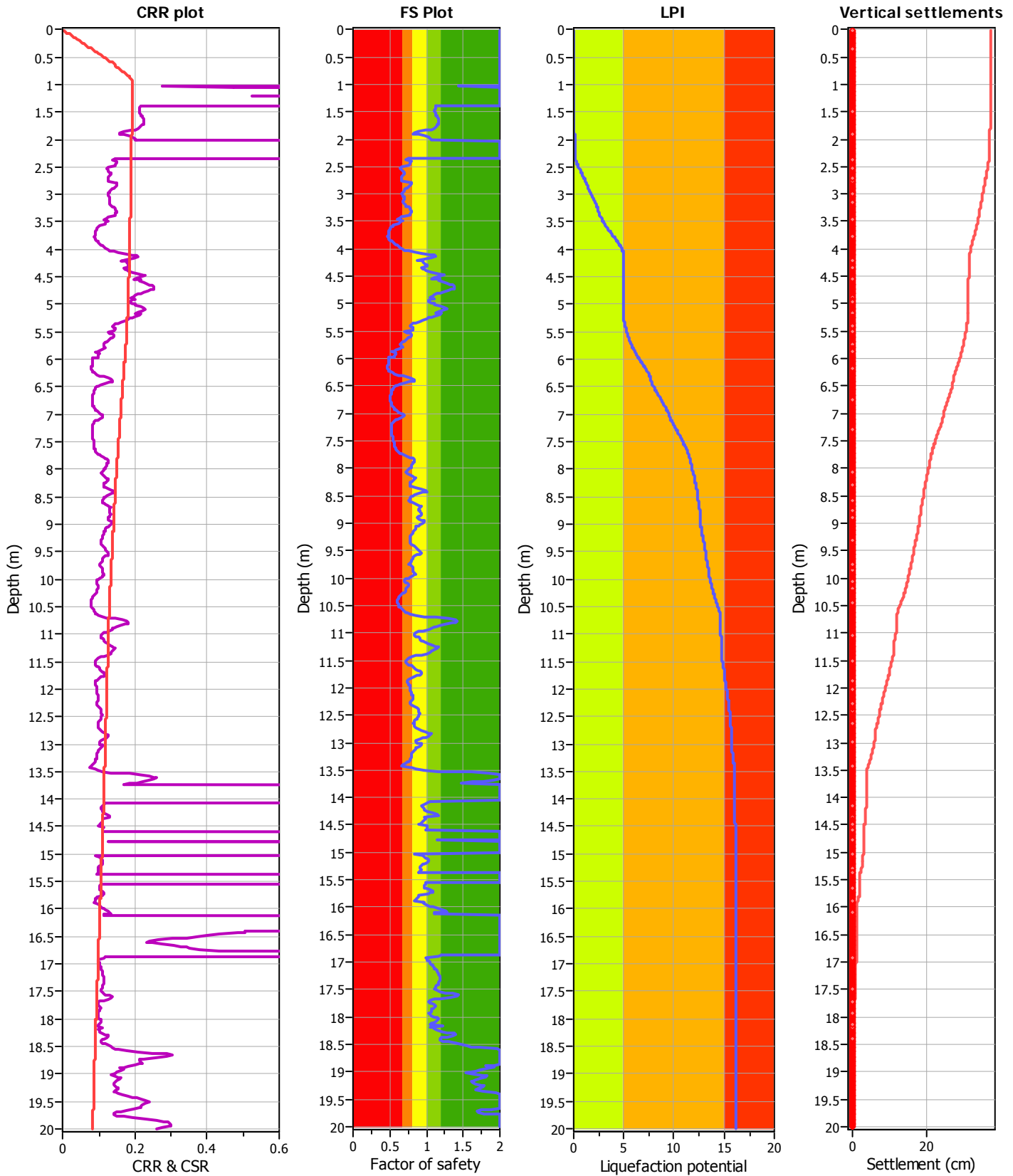
Regione Emilia – Romagna
Comune di Mezzani



Regione	Soggetto realizzatore	Data
Emilia Romagna	Dott. Geol. Massimiliano Trauzzi	Dicembre 2016



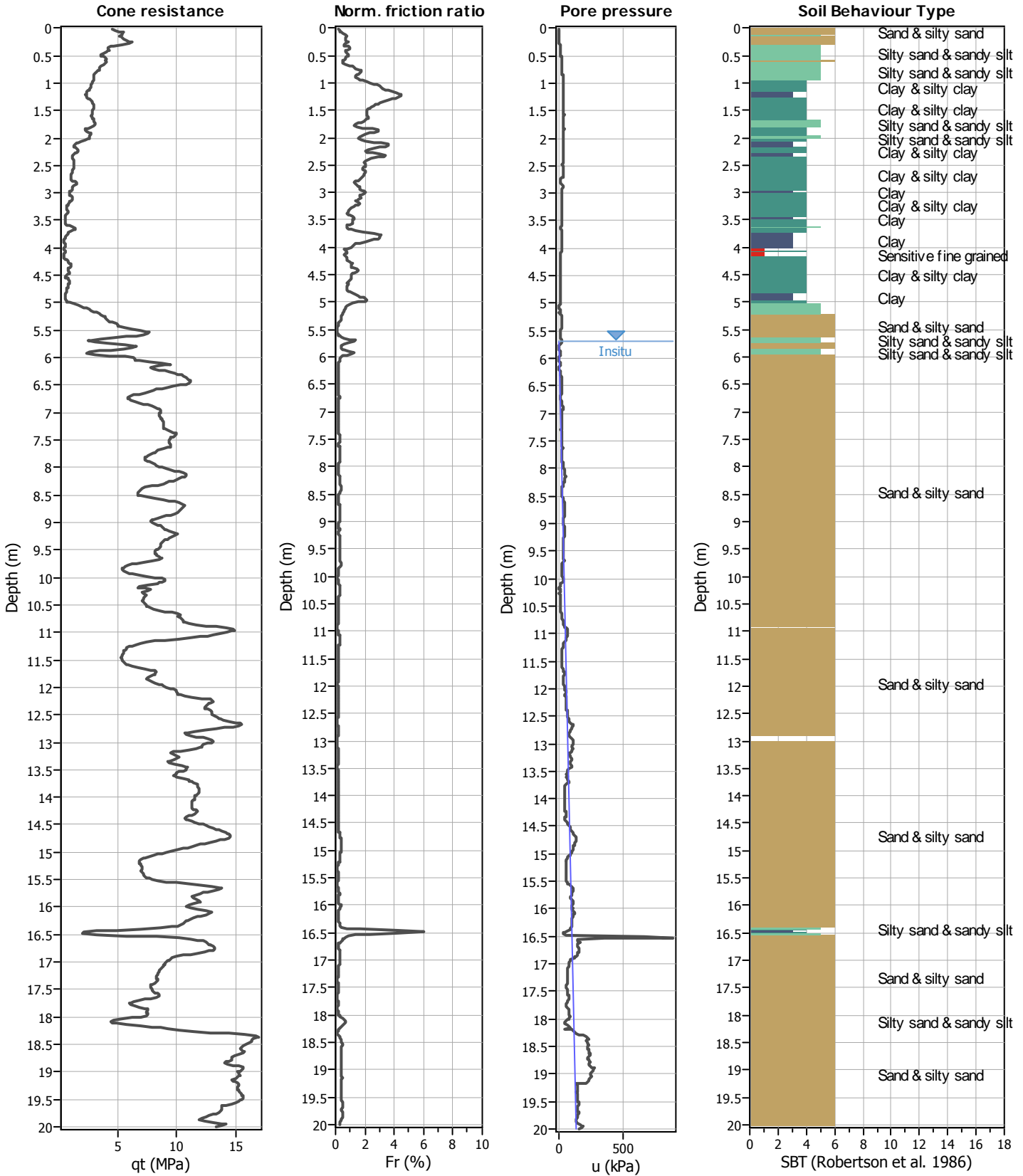
Analysis method:	Robertson (2009)	G.W.T. (in-situ):	5.70 m	Use fill:	No	Clay like behavior	
Fines correction method:	Robertson (2009)	G.W.T. (earthq.):	0.00 m	Fill height:	N/A	applied:	All soils
Points to test:	Based on Ic value	Average results interval:	3	Fill weight:	N/A	Limit depth applied:	No
Earthquake magnitude M_w :	5.95	Ic cut-off value:	2.60	Trans. detect. applied:	Yes	Limit depth:	N/A
Peak ground acceleration:	0.13	Unit weight calculation:	Based on SBT	K_0 applied:	No	MSF method:	Method based



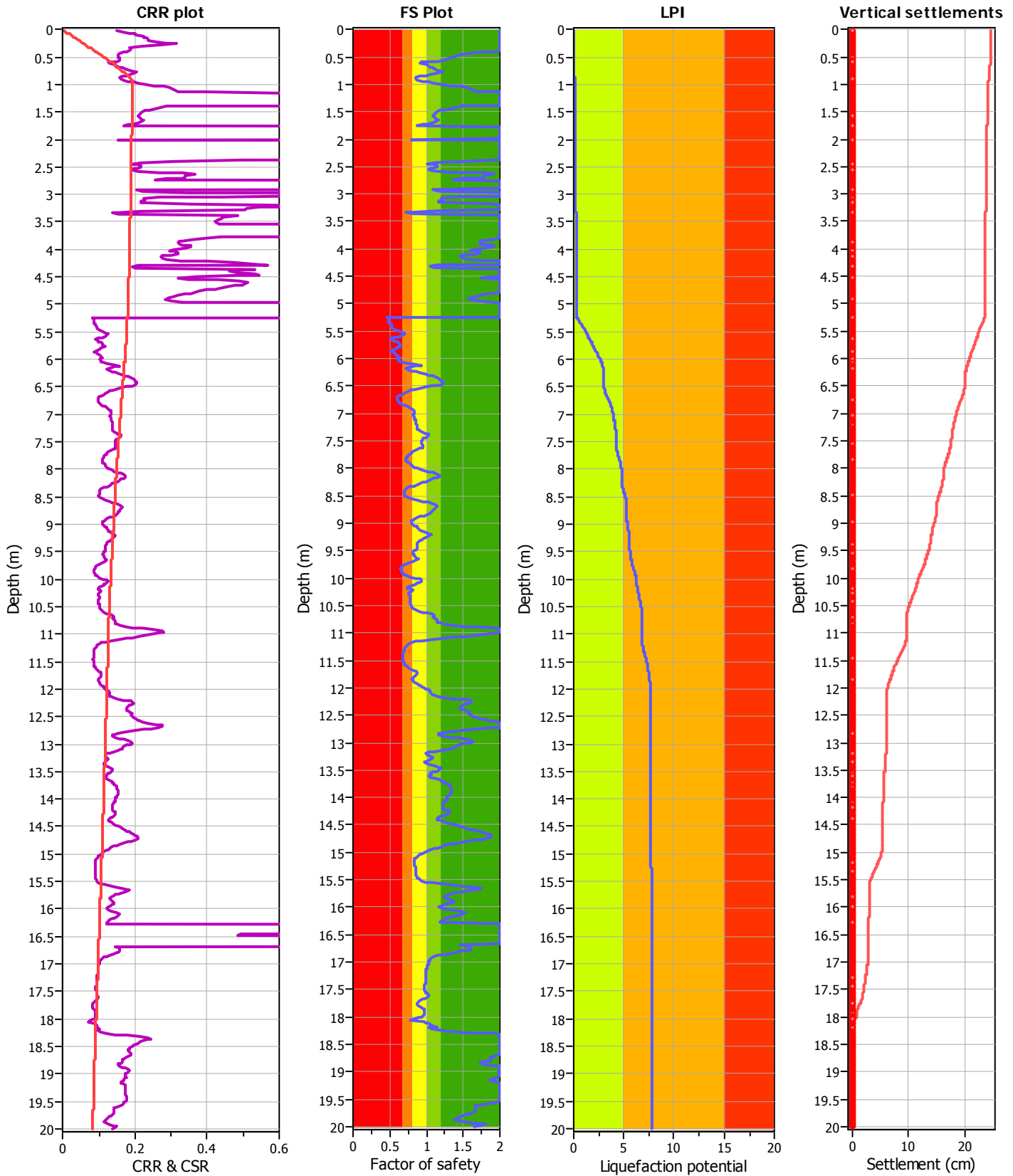
Analysis method:	Robertson (2009)	G.W.T. (in-situ):	5.70 m
Fines correction method:	Robertson (2009)	G.W.T. (earthq.):	0.00 m
Points to test:	Based on Ic value	Average results interval:	3
Earthquake magnitude M_w :	5.95	Ic cut-off value:	2.60
Peak ground acceleration:	0.13	Unit weight calculation:	Based on SBT

Use fill:	No
Fill height:	N/A
Fill weight:	N/A
Trans. detect. applied:	Yes
K_s applied:	No

Clay like behavior applied:	All soils
Limit depth applied:	No
Limit depth:	N/A
MSF method:	Method based



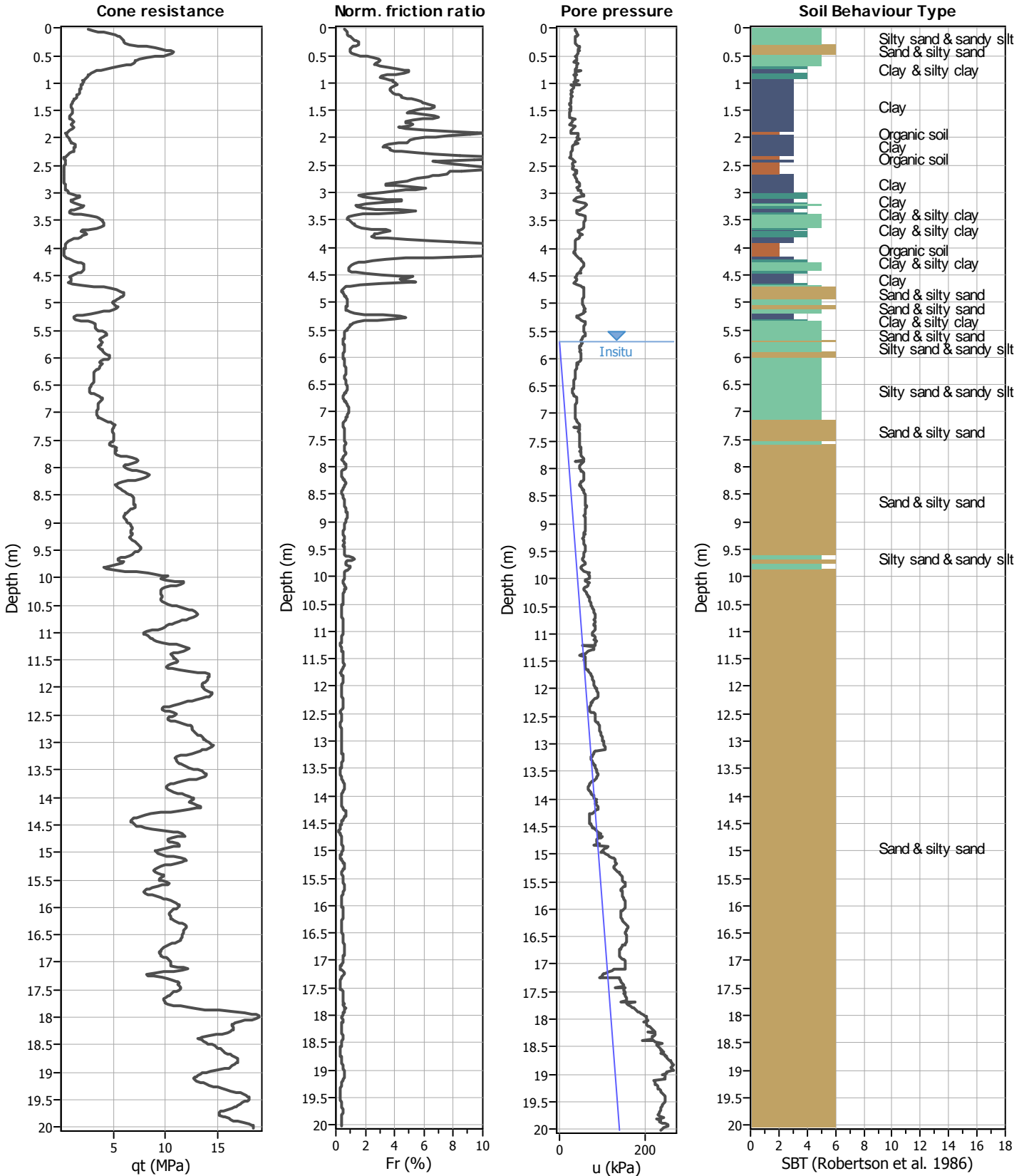
Analysis method:	Robertson (2009)	G.W.T. (in-situ):	5.70 m	Use fill:	No	Clay like behavior	
Fines correction method:	Robertson (2009)	G.W.T. (earthq.):	0.00 m	Fill height:	N/A	applied:	All soils
Points to test:	Based on Ic value	Average results interval:	3	Fill weight:	N/A	Limit depth applied:	No
Earthquake magnitude M_w :	5.95	Ic cut-off value:	2.60	Trans. detect. applied:	Yes	Limit depth:	N/A
Peak ground acceleration:	0.13	Unit weight calculation:	Based on SBT	K_0 applied:	No	MSF method:	Method based



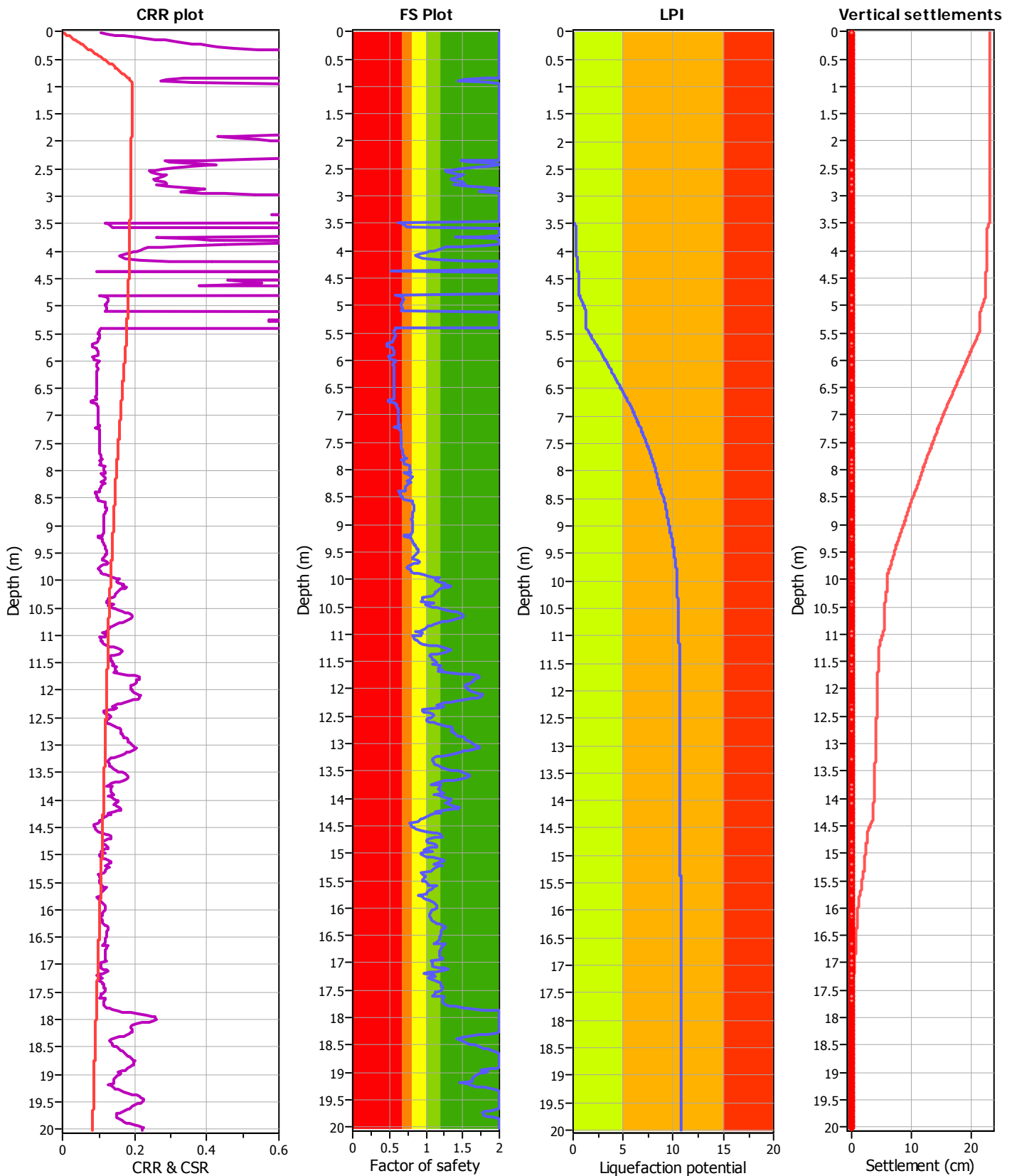
Analysis method:	Robertson (2009)	G.W.T. (in-situ):	5.70 m
Fines correction method:	Robertson (2009)	G.W.T. (earthq.):	0.00 m
Points to test:	Based on Ic value	Average results interval:	3
Earthquake magnitude M_w :	5.95	Ic cut-off value:	2.60
Peak ground acceleration:	0.13	Unit weight calculation:	Based on SBT

Use fill:	No
Fill height:	N/A
Fill weight:	N/A
Trans. detect. applied:	Yes
K_s applied:	No

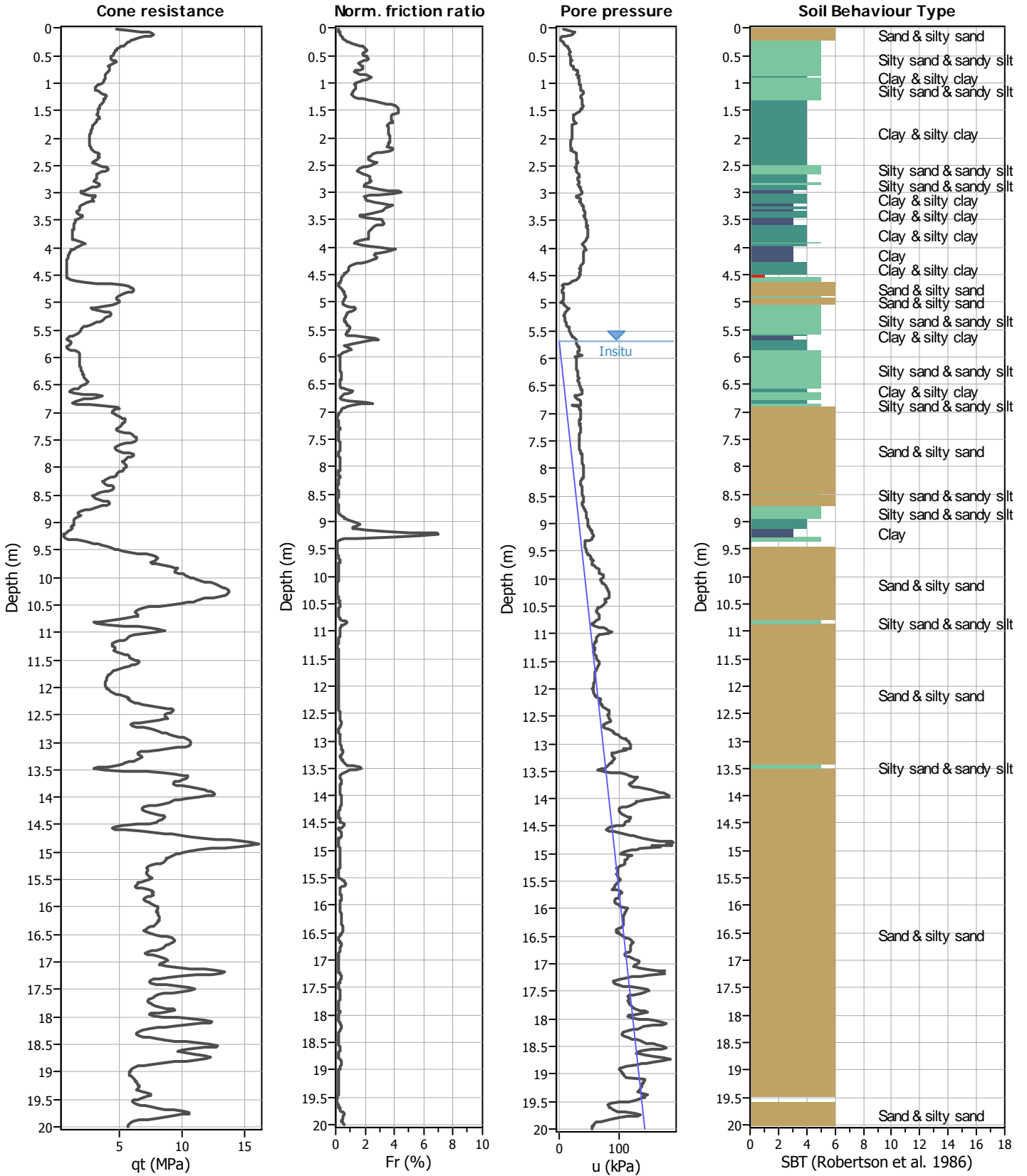
Clay like behavior applied:	All soils
Limit depth applied:	No
Limit depth:	N/A
MSF method:	Method based



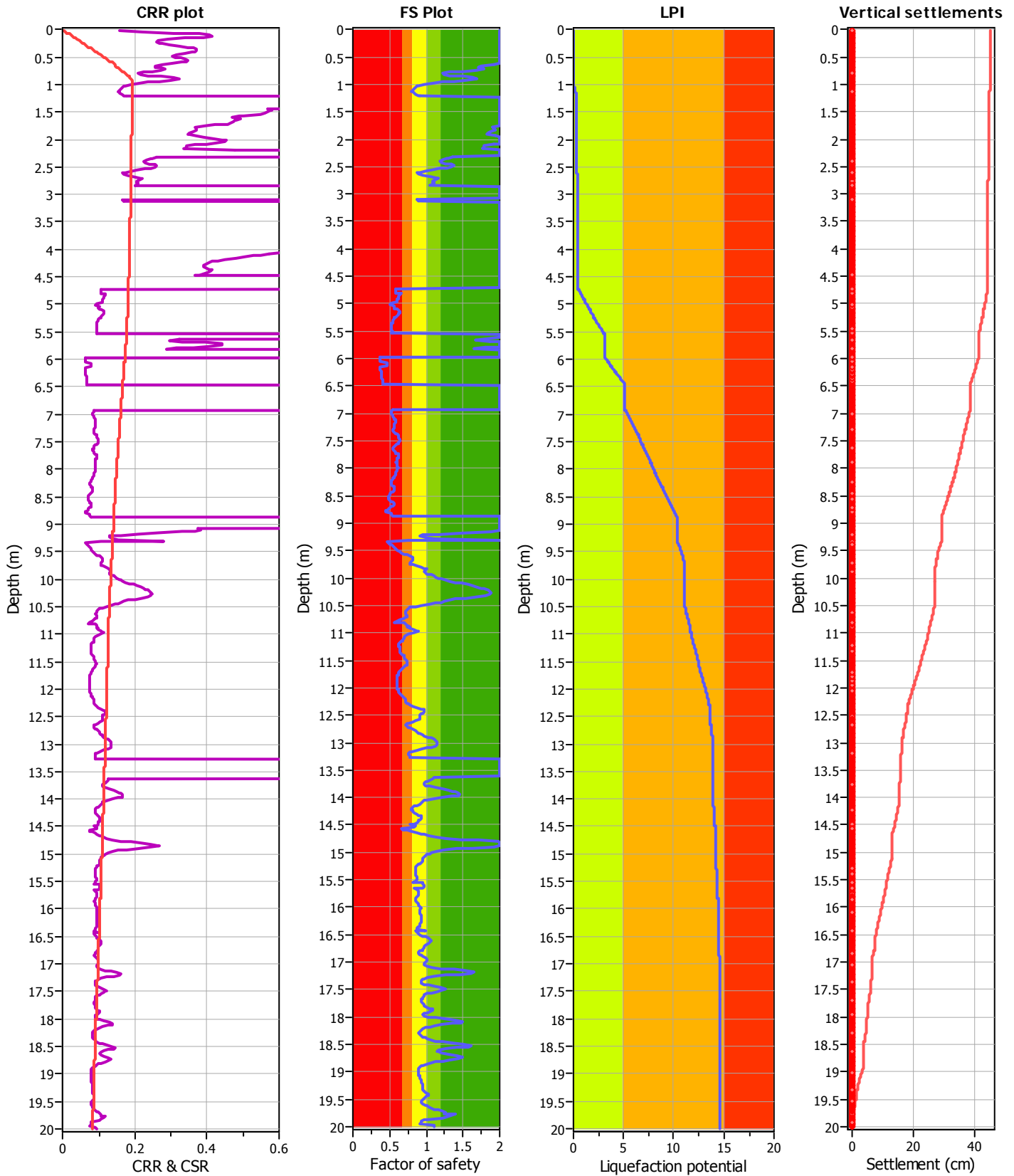
Analysis method:	Robertson (2009)	G.W.T. (in-situ):	5.70 m	Use fill:	No	Clay like behavior	
Fines correction method:	Robertson (2009)	G.W.T. (earthq.):	0.00 m	Fill height:	N/A	applied:	All soils
Points to test:	Based on I_c value	Average results interval:	3	Fill weight:	N/A	Limit depth applied:	No
Earthquake magnitude M_w :	5.95	I_c cut-off value:	2.60	Trans. detect. applied:	Yes	Limit depth:	N/A
Peak ground acceleration:	0.13	Unit weight calculation:	Based on SBT	K_0 applied:	No	MSF method:	Method based



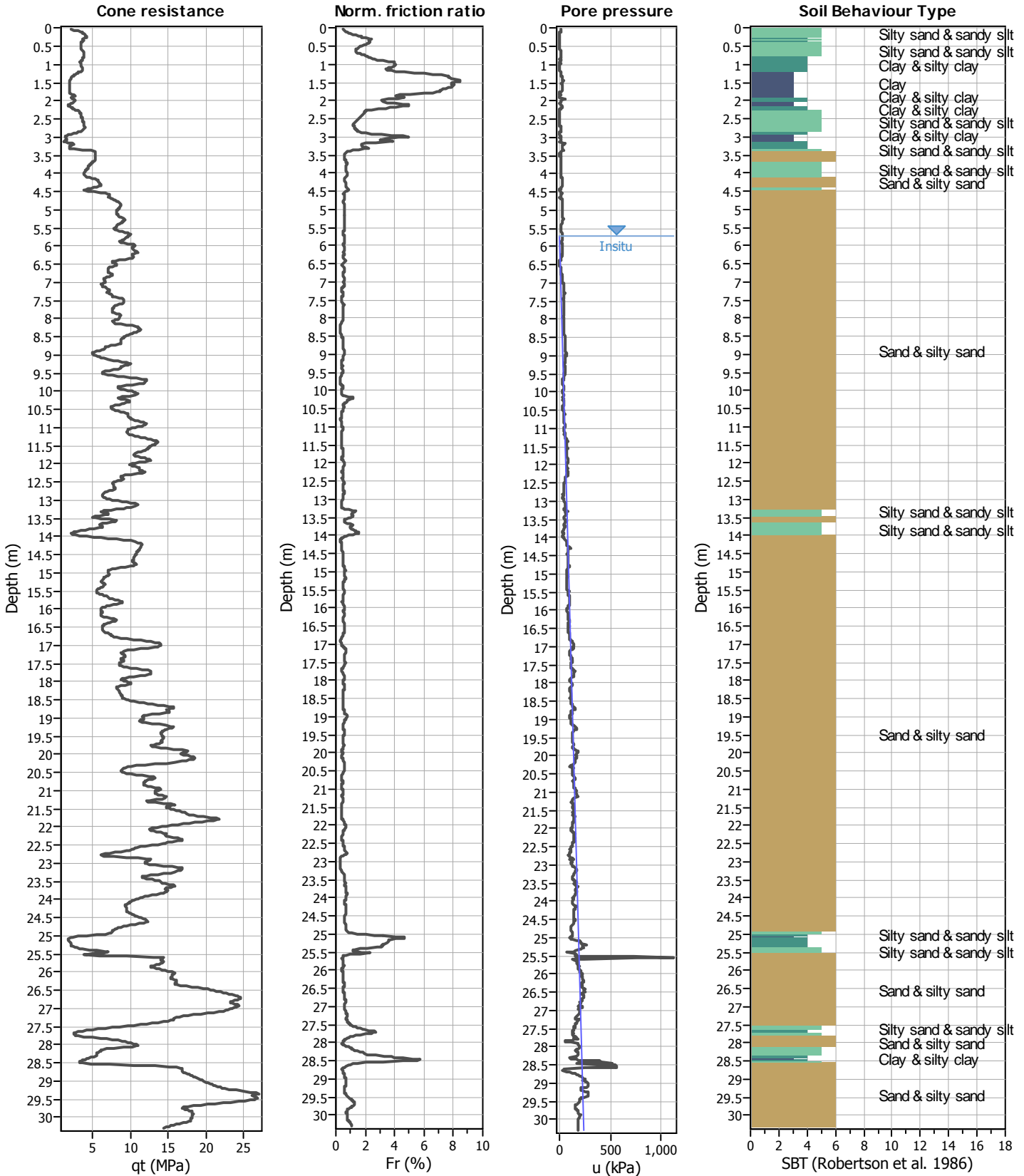
Analysis method:	Robertson (2009)	G.W.T. (in-situ):	5.70 m	Use fill:	No	Clay like behavior	
Fines correction method:	Robertson (2009)	G.W.T. (earthq.):	0.00 m	Fill height:	N/A	applied:	All soils
Points to test:	Based on Ic value	Average results interval:	3	Fill weight:	N/A	Limit depth applied:	No
Earthquake magnitude M_w :	5.95	Ic cut-off value:	2.60	Trans. detect. applied:	Yes	Limit depth:	N/A
Peak ground acceleration:	0.13	Unit weight calculation:	Based on SBT	K_0 applied:	No	MSF method:	Method based



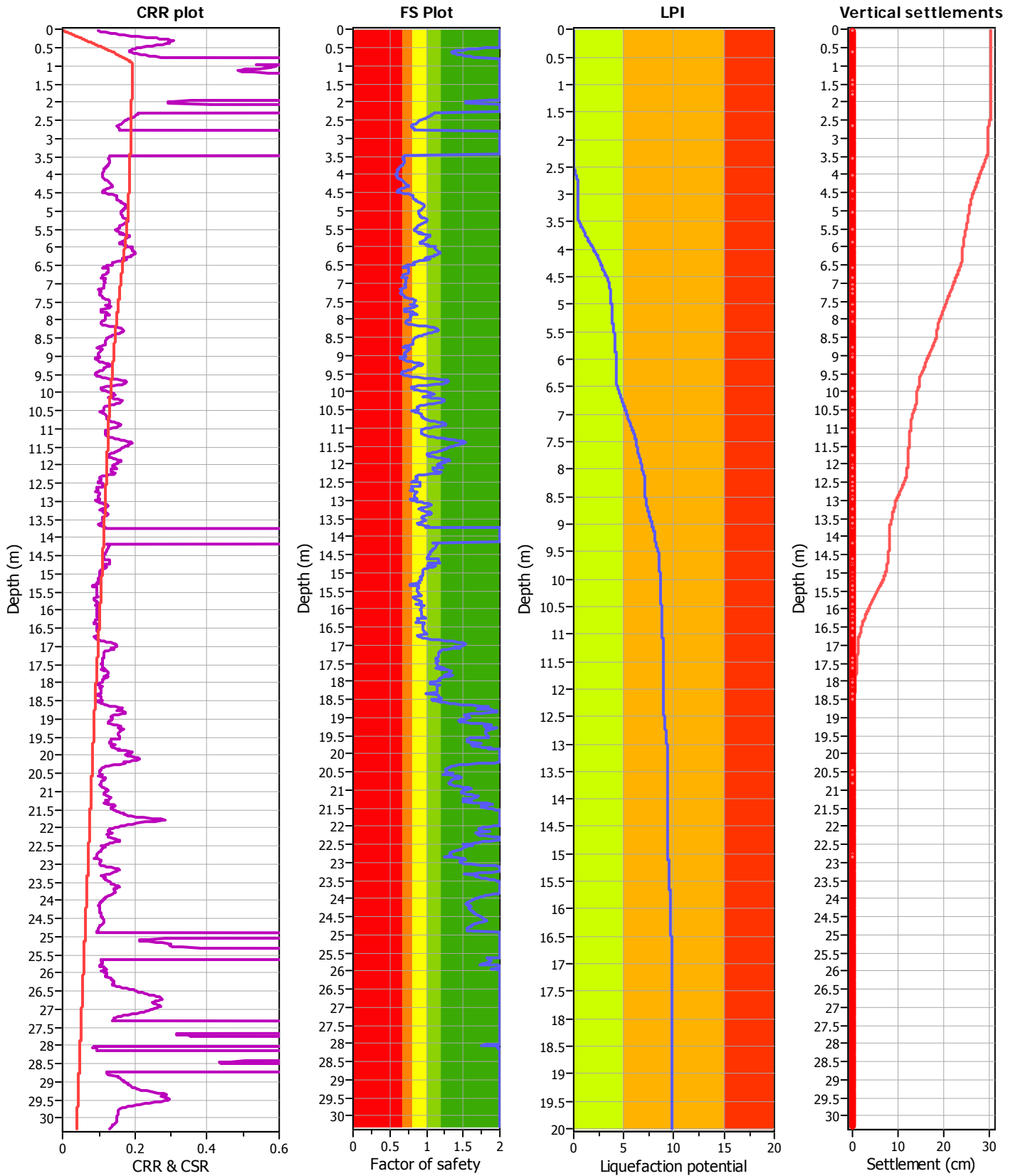
Analysis method:	Robertson (2009)	G.W.T. (in-situ):	5.70 m	Use fill:	No	Clay like behavior	
Fines correction method:	Robertson (2009)	G.W.T. (earthq.):	0.00 m	Fill height:	N/A	applied:	All soils
Points to test:	Based on Ic value	Average results interval:	3	Fill weight:	N/A	Limit depth applied:	No
Earthquake magnitude M_w :	5.95	Ic cut-off value:	2.60	Trans. detect. applied:	Yes	Limit depth:	N/A
Peak ground acceleration:	0.13	Unit weight calculation:	Based on SBT	K_0 applied:	No	MSF method:	Method based



Analysis method:	Robertson (2009)	G.W.T. (in-situ):	5.70 m	Use fill:	No	Clay like behavior	
Fines correction method:	Robertson (2009)	G.W.T. (earthq.):	0.00 m	Fill height:	N/A	applied:	All soils
Points to test:	Based on Ic value	Average results interval:	3	Fill weight:	N/A	Limit depth applied:	No
Earthquake magnitude M_w :	5.95	Ic cut-off value:	2.60	Trans. detect. applied:	Yes	Limit depth:	N/A
Peak ground acceleration:	0.13	Unit weight calculation:	Based on SBT	K_s applied:	No	MSF method:	Method based



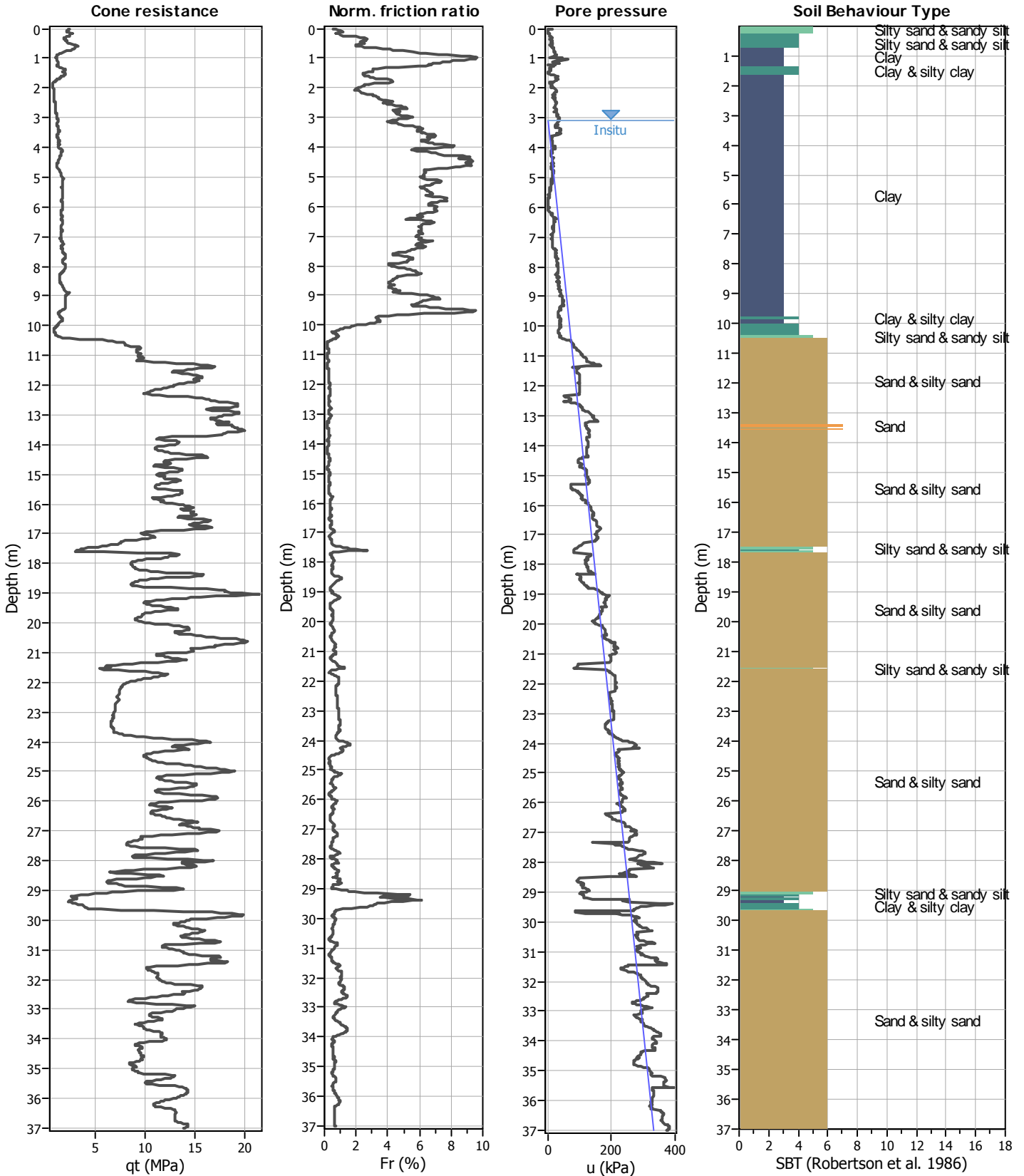
Analysis method:	Robertson (2009)	G.W.T. (in-situ):	5.70 m	Use fill:	No	Clay like behavior	
Fines correction method:	Robertson (2009)	G.W.T. (earthq.):	0.00 m	Fill height:	N/A	applied:	All soils
Points to test:	Based on Ic value	Average results interval:	3	Fill weight:	N/A	Limit depth applied:	No
Earthquake magnitude M_w :	5.95	Ic cut-off value:	2.60	Trans. detect. applied:	Yes	Limit depth:	N/A
Peak ground acceleration:	0.13	Unit weight calculation:	Based on SBT	K_0 applied:	No	MSF method:	Method based



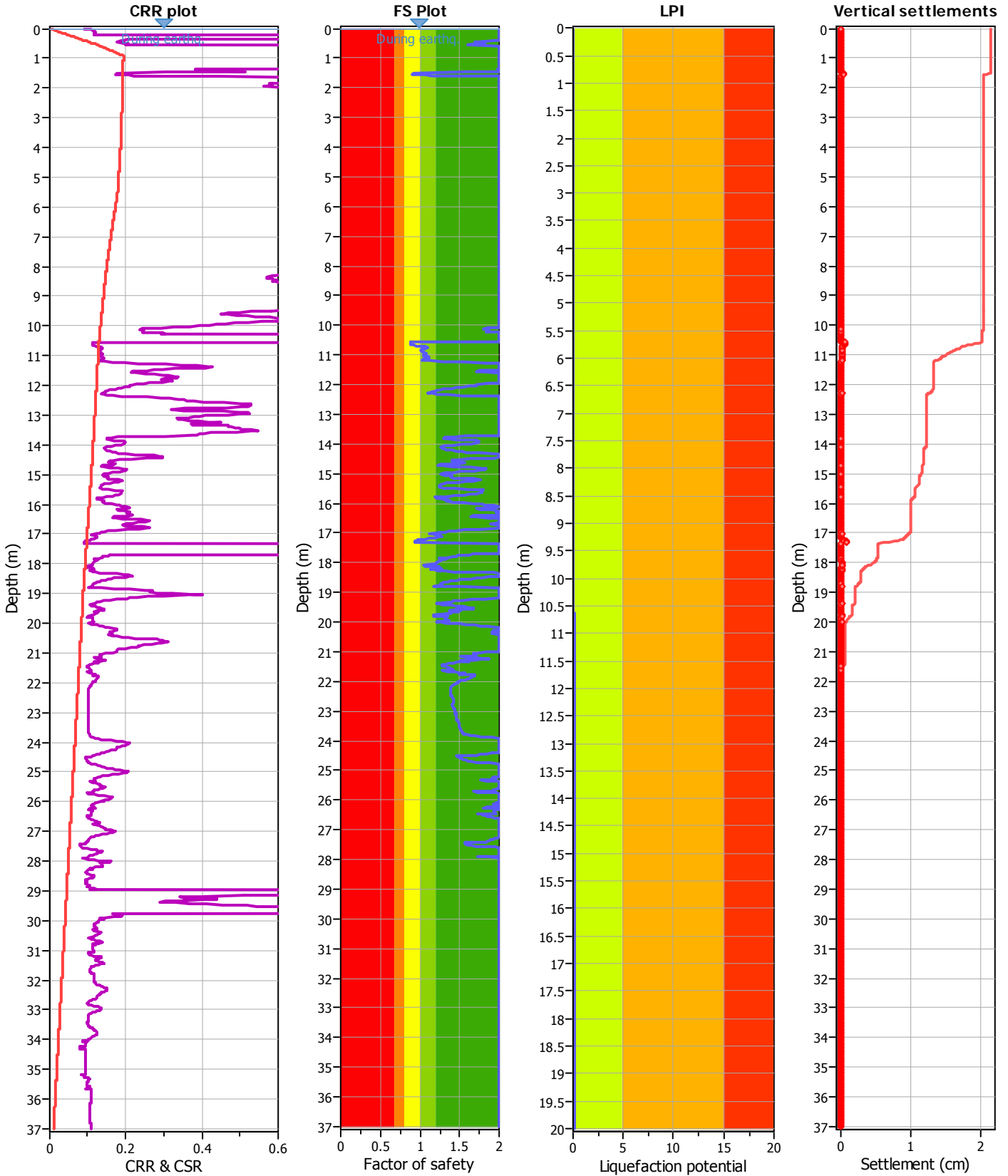
Analysis method:	Robertson (2009)	G.W.T. (in-situ):	5.70 m
Fines correction method:	Robertson (2009)	G.W.T. (earthq.):	0.00 m
Points to test:	Based on Ic value	Average results interval:	3
Earthquake magnitude M_w :	5.95	Ic cut-off value:	2.60
Peak ground acceleration:	0.13	Unit weight calculation:	Based on SBT

Use fill:	No
Fill height:	N/A
Fill weight:	N/A
Trans. detect. applied:	Yes
K_v applied:	No

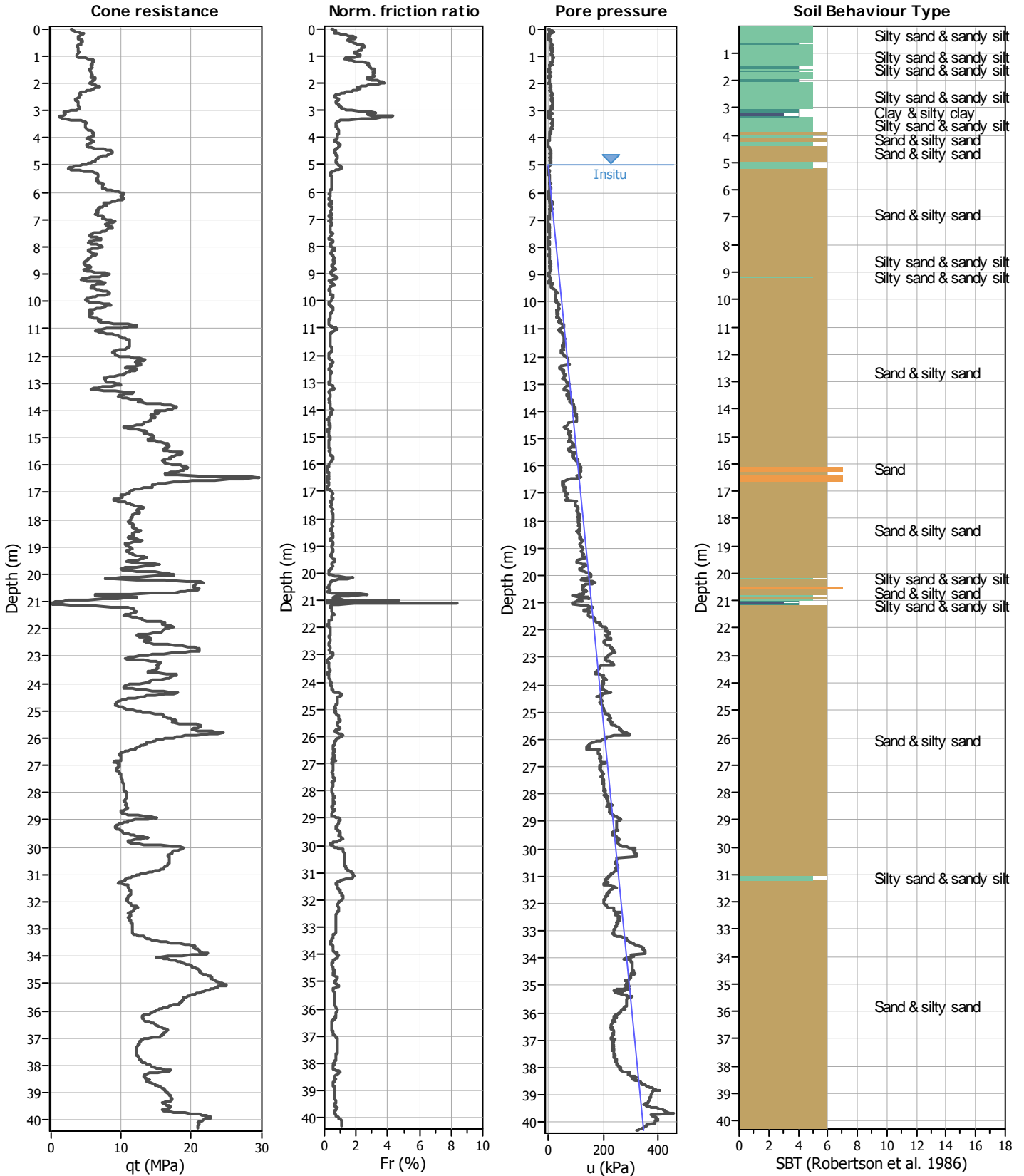
Clay like behavior applied:	All soils
Limit depth applied:	No
Limit depth:	N/A
MSF method:	Method based



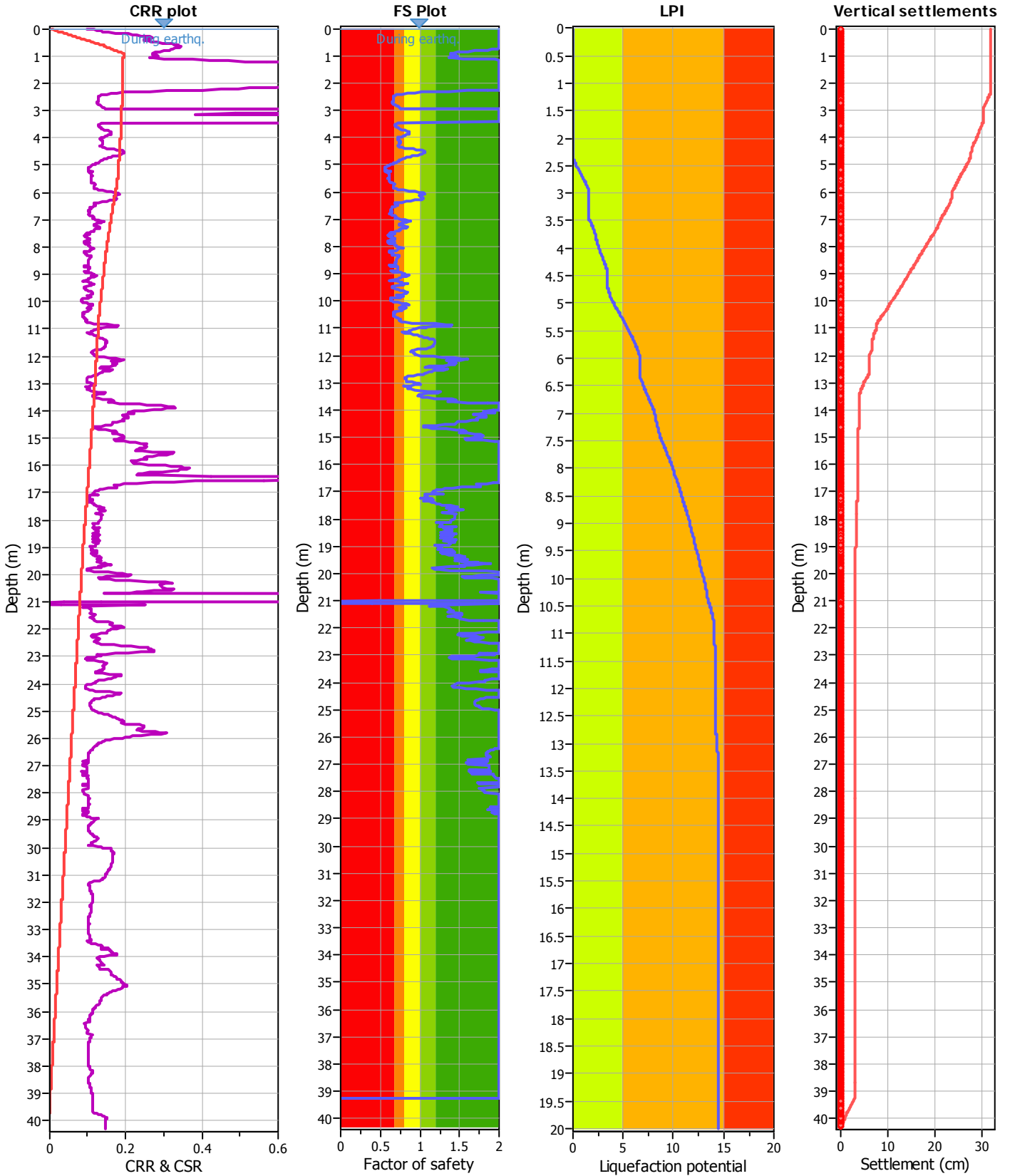
Analysis method:	Robertson (2009)	G.W.T. (in-situ):	3.10 m	Use fill:	No	Clay like behavior	
Fines correction method:	Robertson (2009)	G.W.T. (earthq.):	0.00 m	Fill height:	N/A	applied:	All soils
Points to test:	Based on I_c value	Average results interval:	3	Fill weight:	N/A	Limit depth applied:	No
Earthquake magnitude M_w :	5.95	I_c cut-off value:	2.60	Trans. detect. applied:	Yes	Limit depth:	N/A
Peak ground acceleration:	0.13	Unit weight calculation:	Based on SBT	K_0 applied:	No	MSF method:	Method based



Analysis method:	Robertson (2009)	G.W.T. (in-situ):	3.10 m	Use fill:	No	Clay like behavior	
Fines correction method:	Robertson (2009)	G.W.T. (earthq.):	0.00 m	Fill height:	N/A	applied:	All soils
Points to test:	Based on Ic value	Average results interval:	3	Fill weight:	N/A	Limit depth applied:	No
Earthquake magnitude M_w :	5.95	Ic cut-off value:	2.60	Trans. detect. applied:	Yes	Limit depth:	N/A
Peak ground acceleration:	0.13	Unit weight calculation:	Based on SBT	K_s applied:	No	MSF method:	Method based



Analysis method:	Robertson (2009)	G.W.T. (in-situ):	5.00 m	Use fill:	No	Clay like behavior	
Fines correction method:	Robertson (2009)	G.W.T. (earthq.):	0.00 m	Fill height:	N/A	applied:	All soils
Points to test:	Based on Ic value	Average results interval:	3	Fill weight:	N/A	Limit depth applied:	No
Earthquake magnitude M_w :	5.95	Ic cut-off value:	2.60	Trans. detect. applied:	Yes	Limit depth:	N/A
Peak ground acceleration:	0.13	Unit weight calculation:	Based on SBT	K_0 applied:	No	MSF method:	Method based



Analysis method:	Robertson (2009)	G.W.T. (in-situ):	5.00 m	Use fill:	No	Clay like behavior	
Fines correction method:	Robertson (2009)	G.W.T. (earthq.):	0.00 m	Fill height:	N/A	applied:	All soils
Points to test:	Based on Ic value	Average results interval:	3	Fill weight:	N/A	Limit depth applied:	No
Earthquake magnitude M_w :	5.95	Ic cut-off value:	2.60	Trans. detect. applied:	Yes	Limit depth:	N/A
Peak ground acceleration:	0.13	Unit weight calculation:	Based on SBT	K_s applied:	No	MSF method:	Method based