

# MICROZONAZIONE SISMICA

## Carta di microzonazione sismica



FA IS 0,5 - 1,5 s  
scala 1:5.000

Regione Emilia-Romagna  
Comune di San Secondo

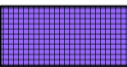



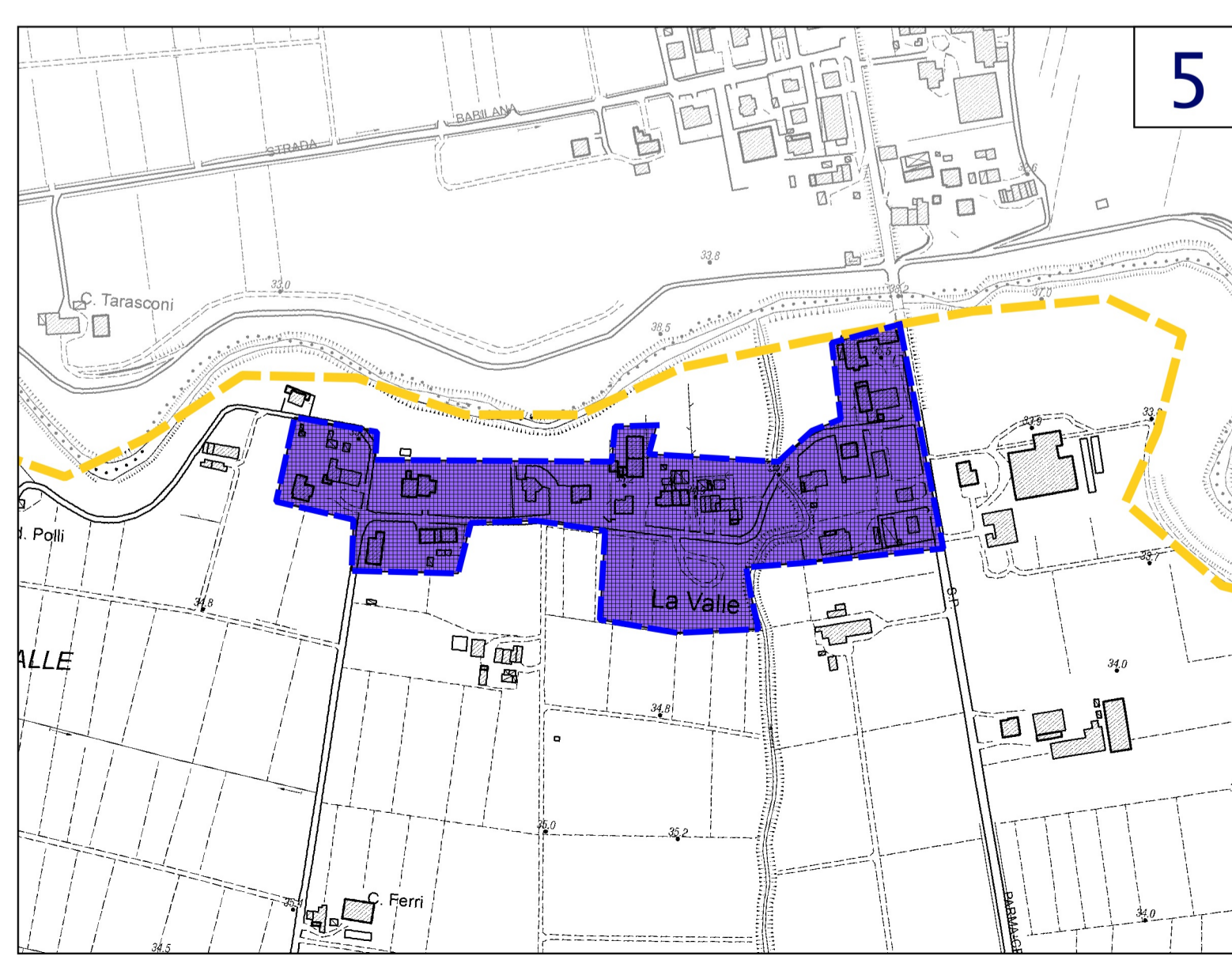
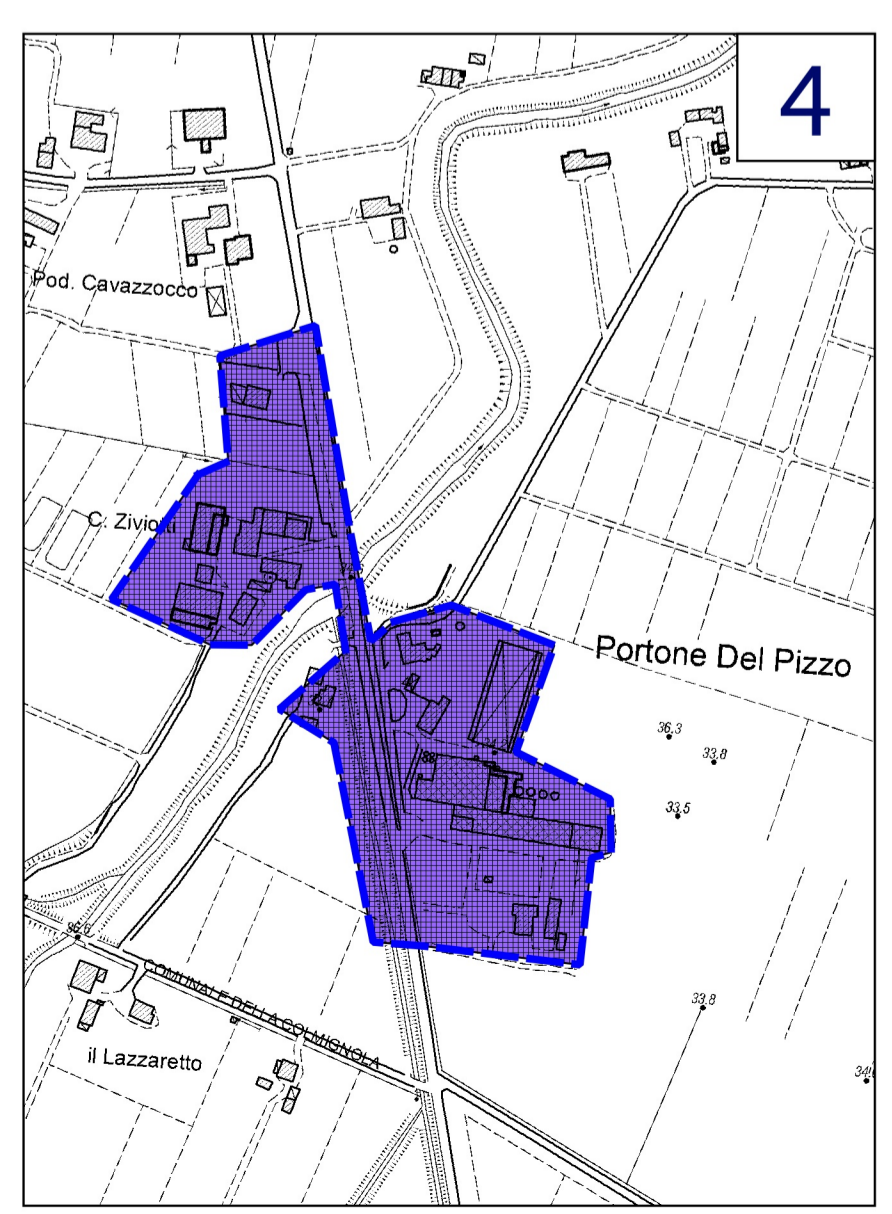
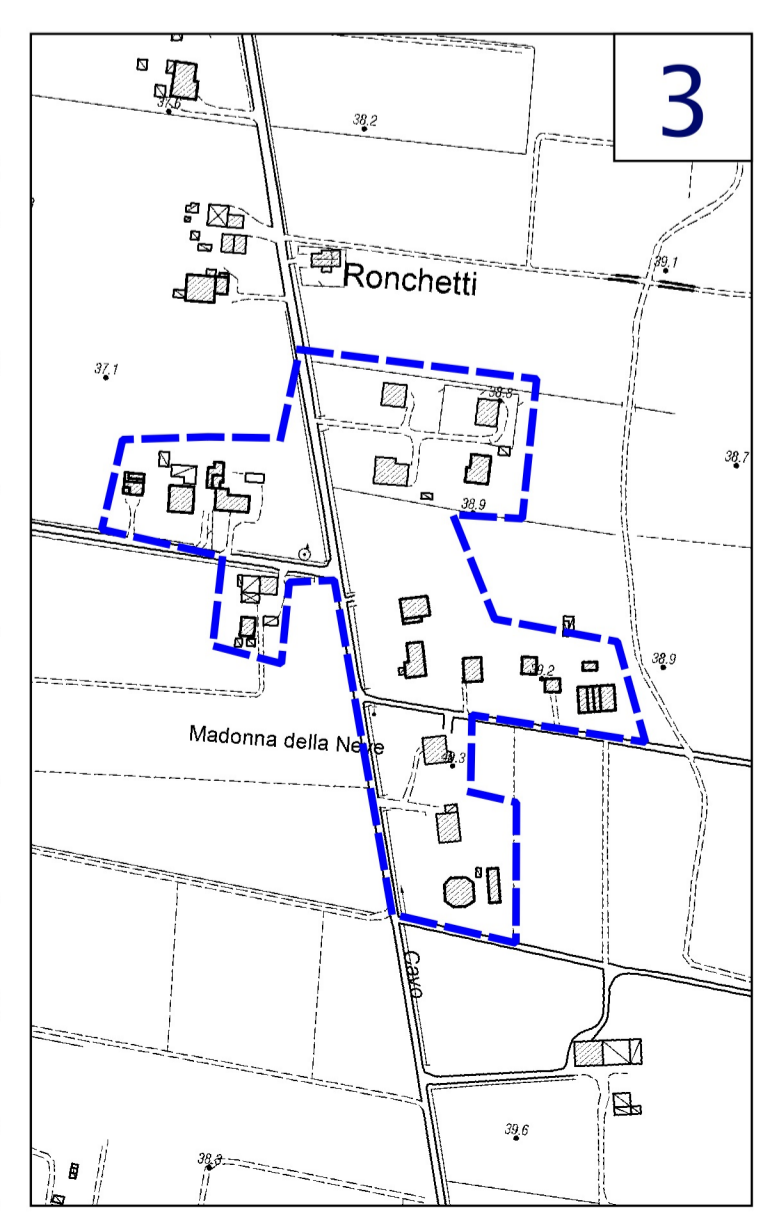
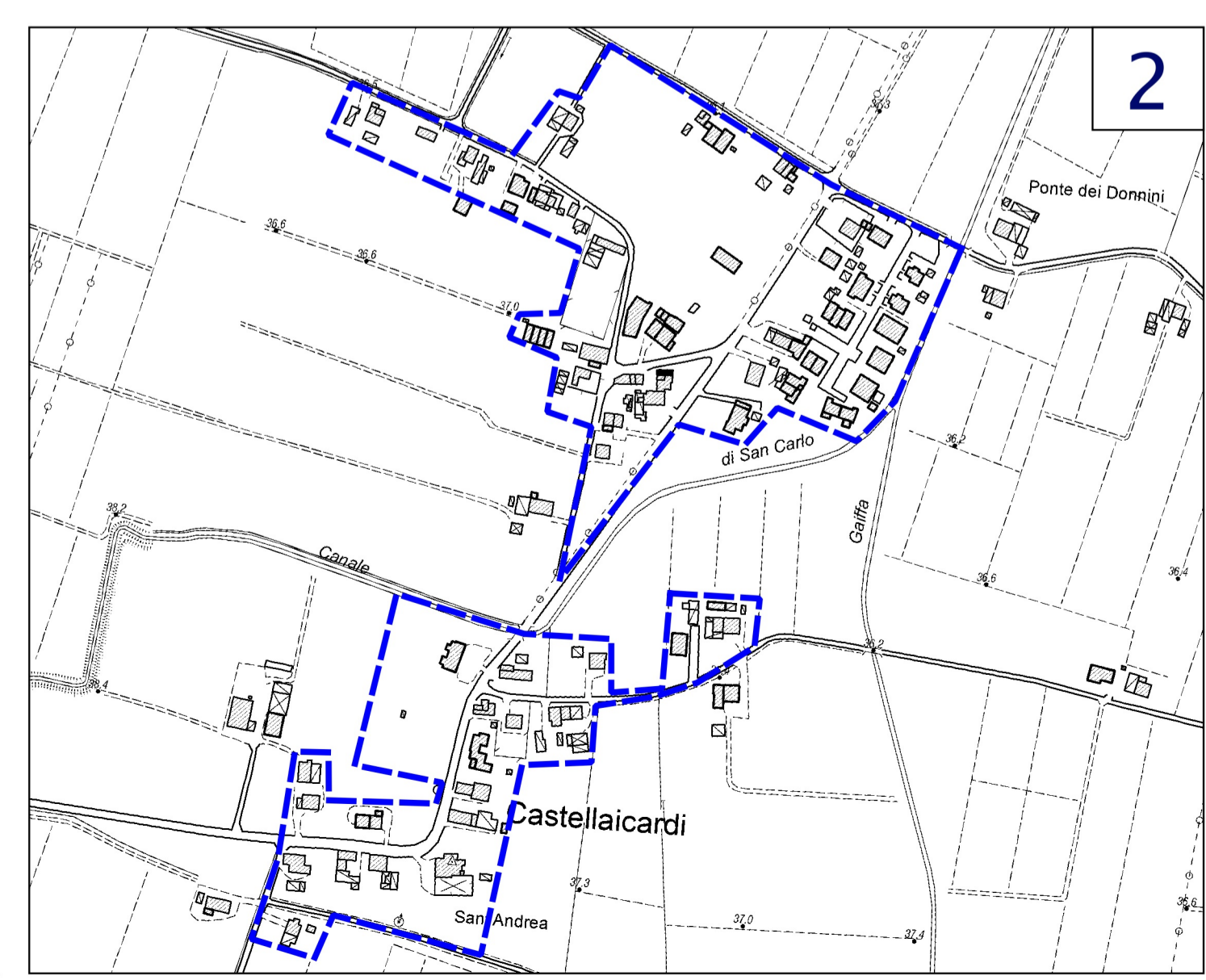
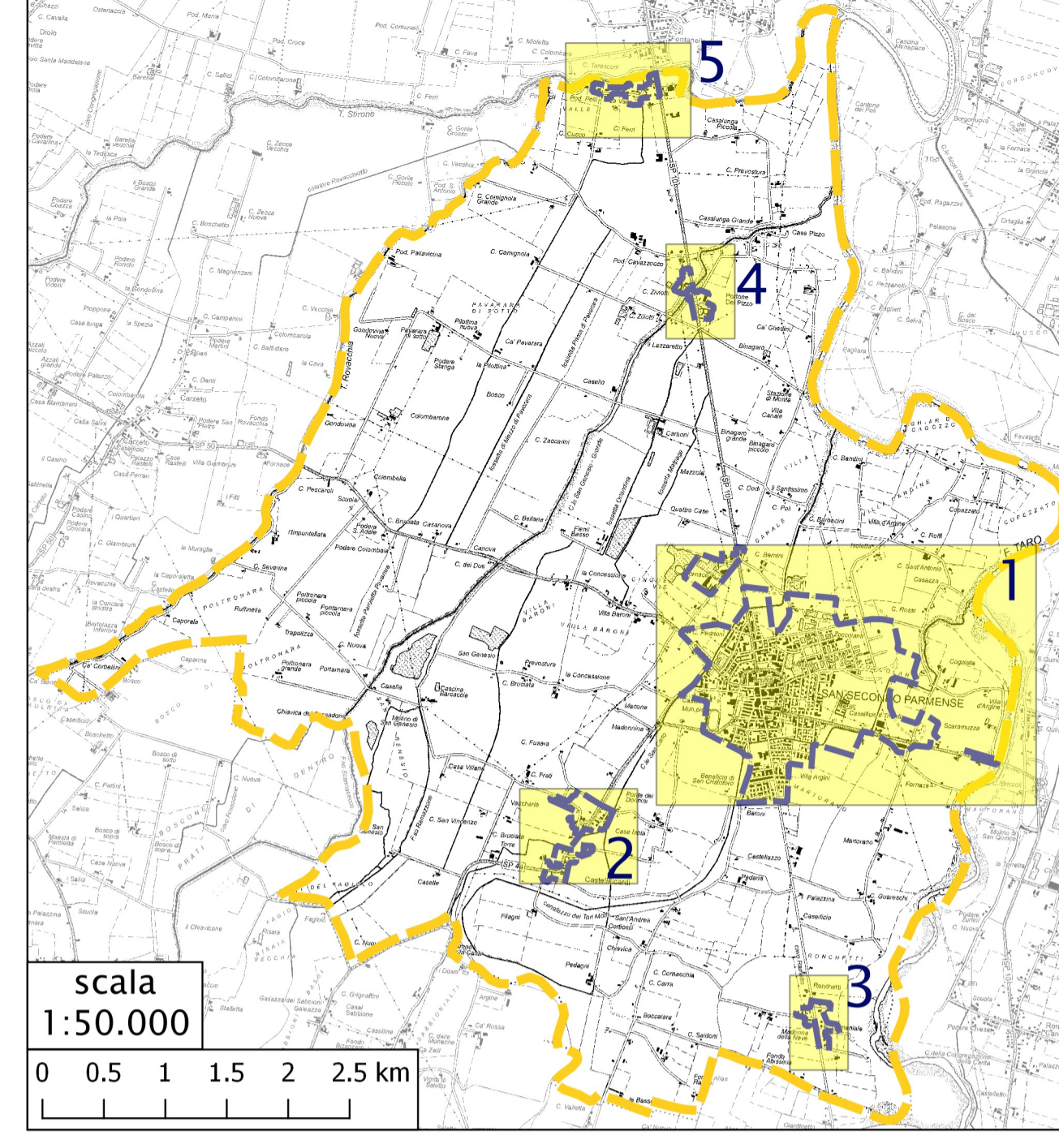
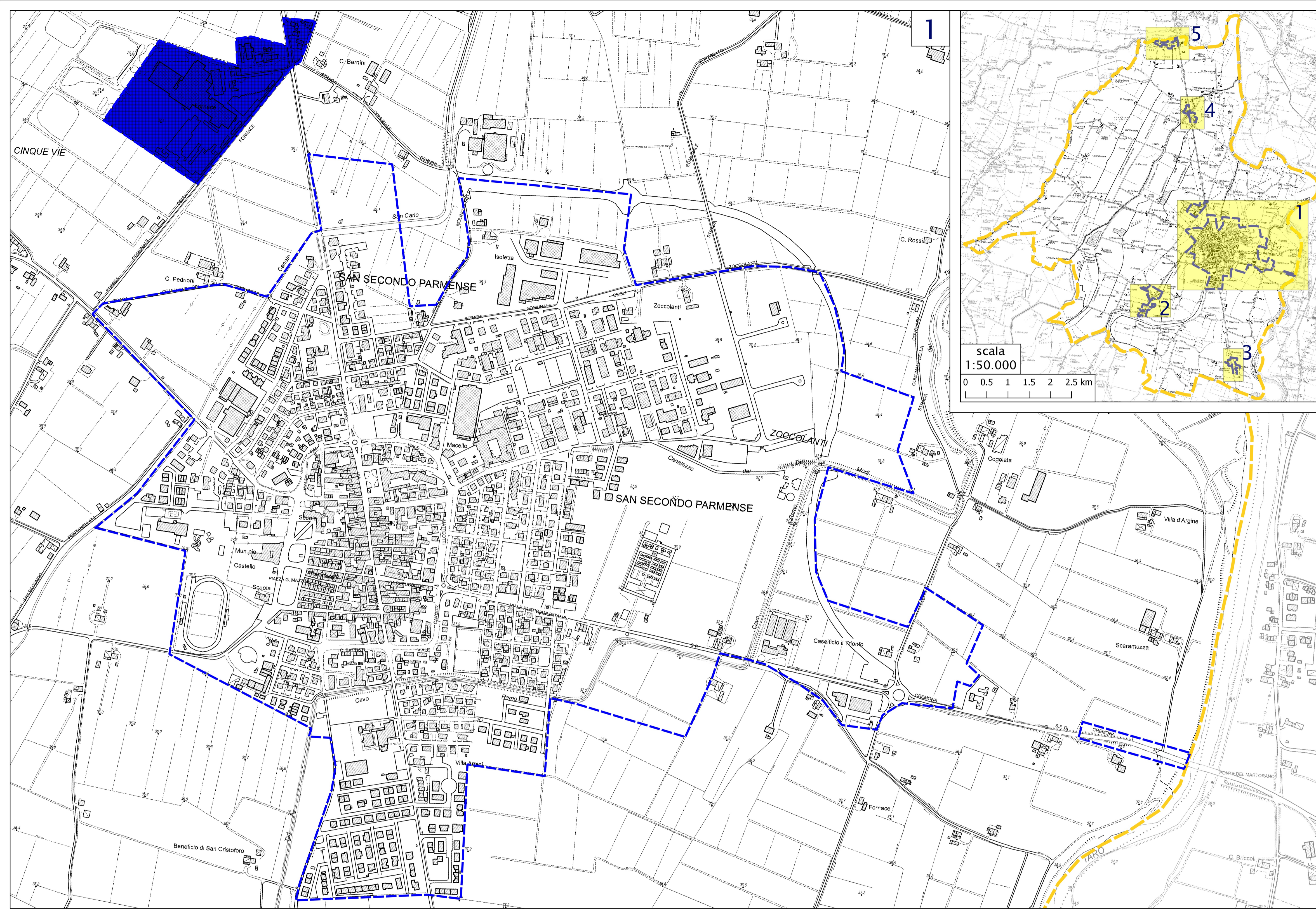
Regione Emilia-Romagna	Soggetto realizzatore  Direzione tecnica Dott. Geol. Carlo Caleffi Dott. Geol. Francesco Cerutti Collaboratori Dott. Geol. Matteo Baisi Dott. Geol. Alessandro Ferrari Dott.ssa Giulia Mainardi	Data Dicembre 2017
---------------------------	--	-----------------------

### Legenda

-  Confine Comunale
-  Area oggetto di microzonazione sismica

### Zone di attenzione per instabilità (Livello 2)

-  ZA.LQ - Zona di attenzione per Liquefazione - FA IS 0,5-1,5 s = 1,9 - 2,0
-  ZA.LQ - Zona di attenzione per Liquefazione - FA IS 0,5-1,5 s = 2,3 - 2,4



0 125 250 375 500 m

