

MICROZONAZIONE SISMICA

Carta di microzonazione sismica

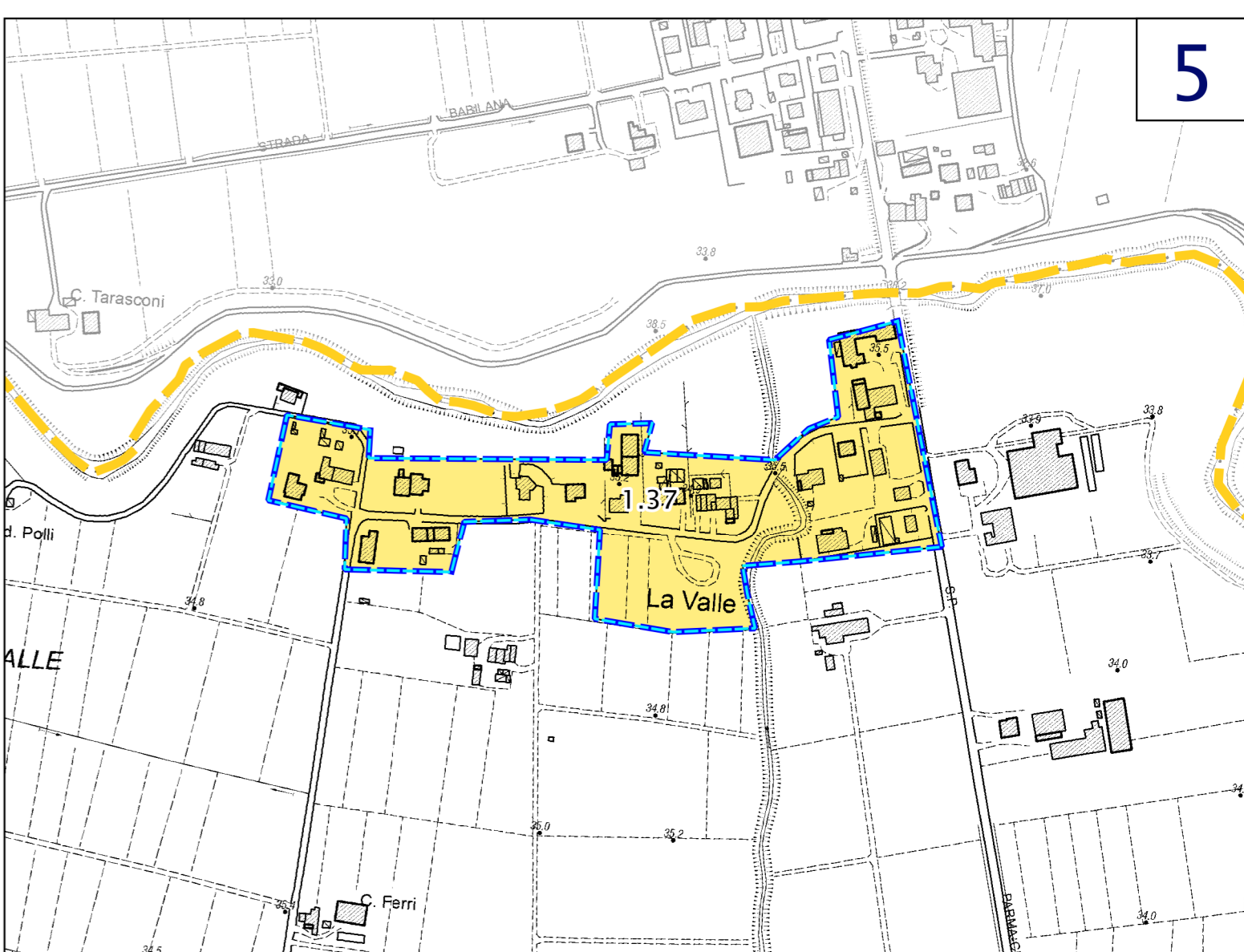
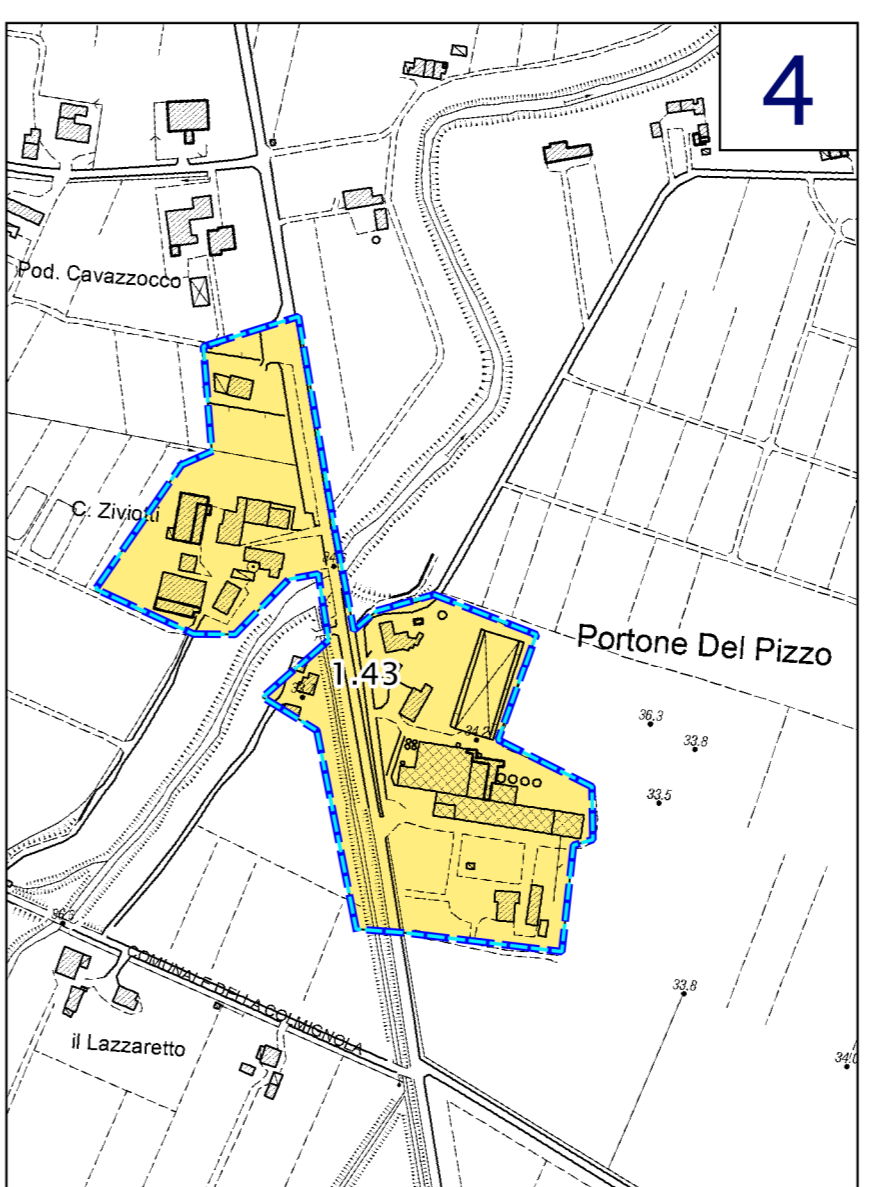
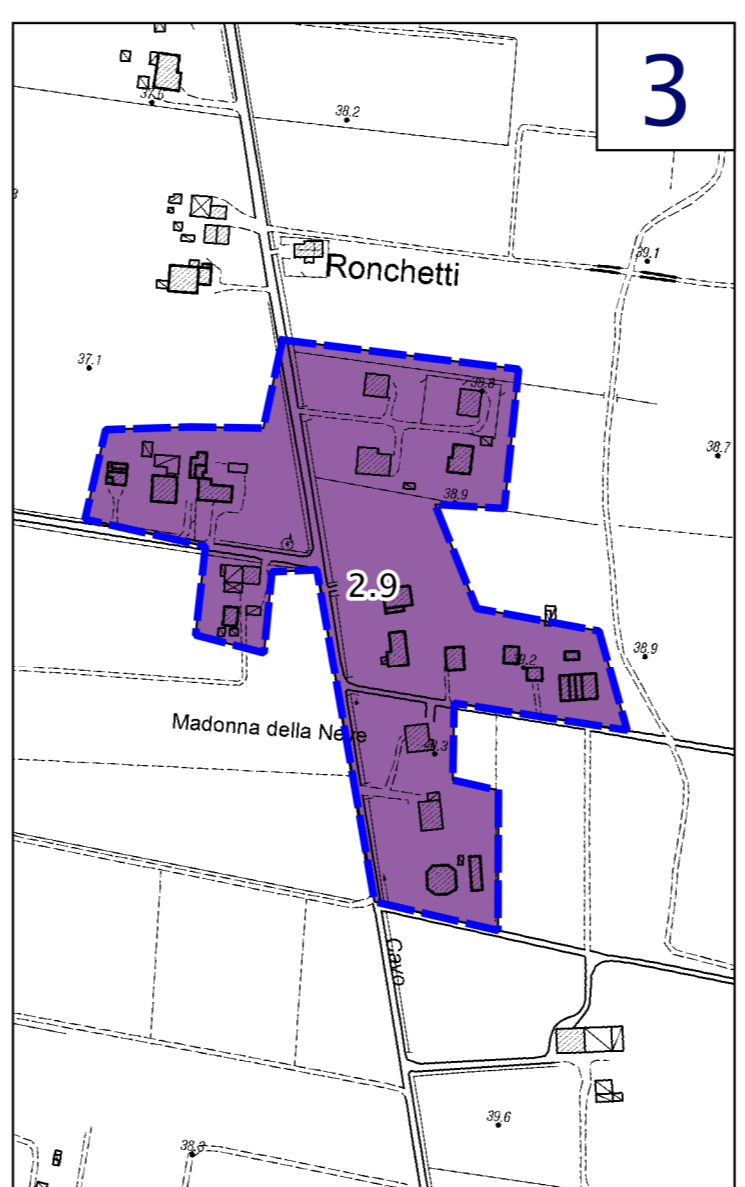
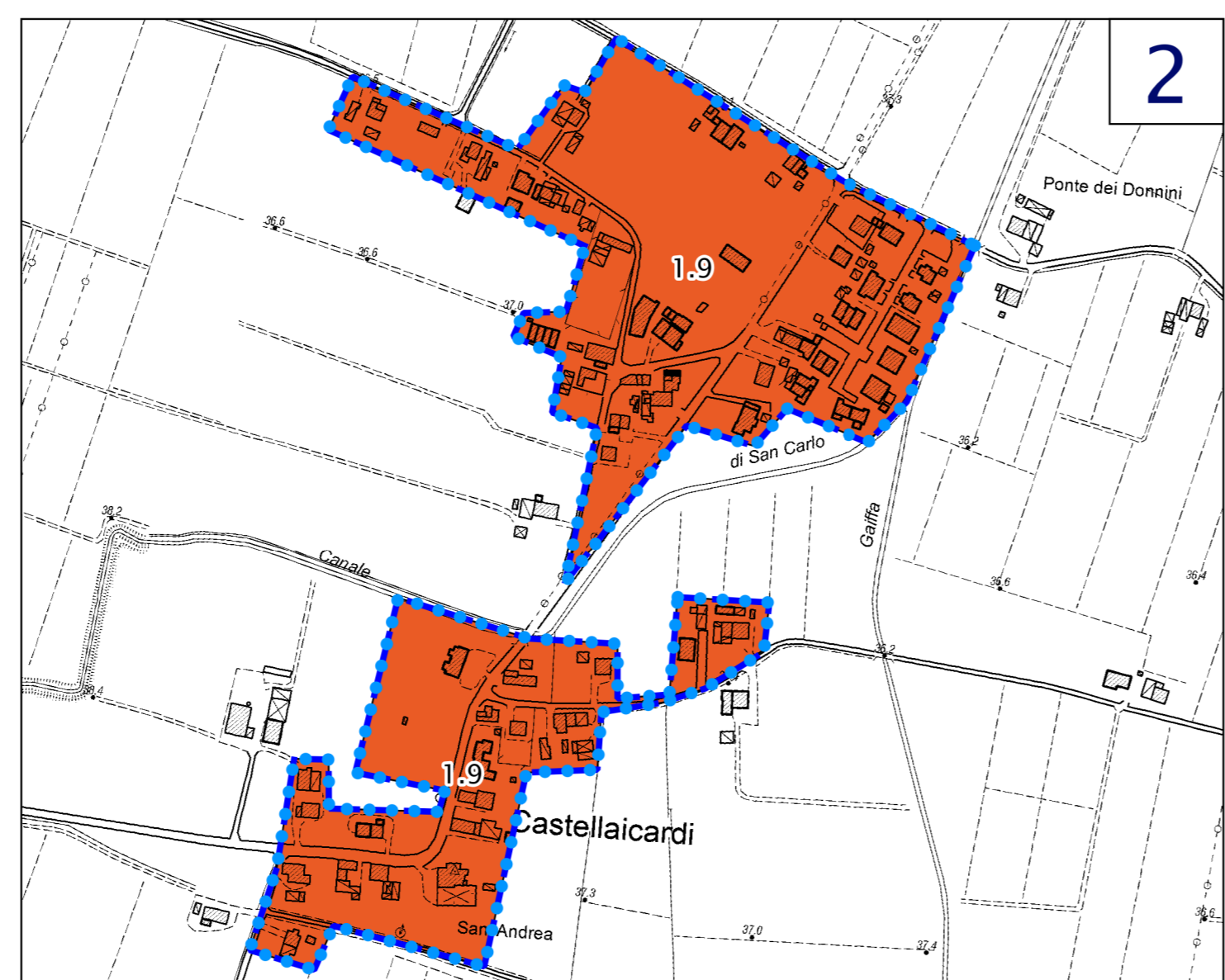
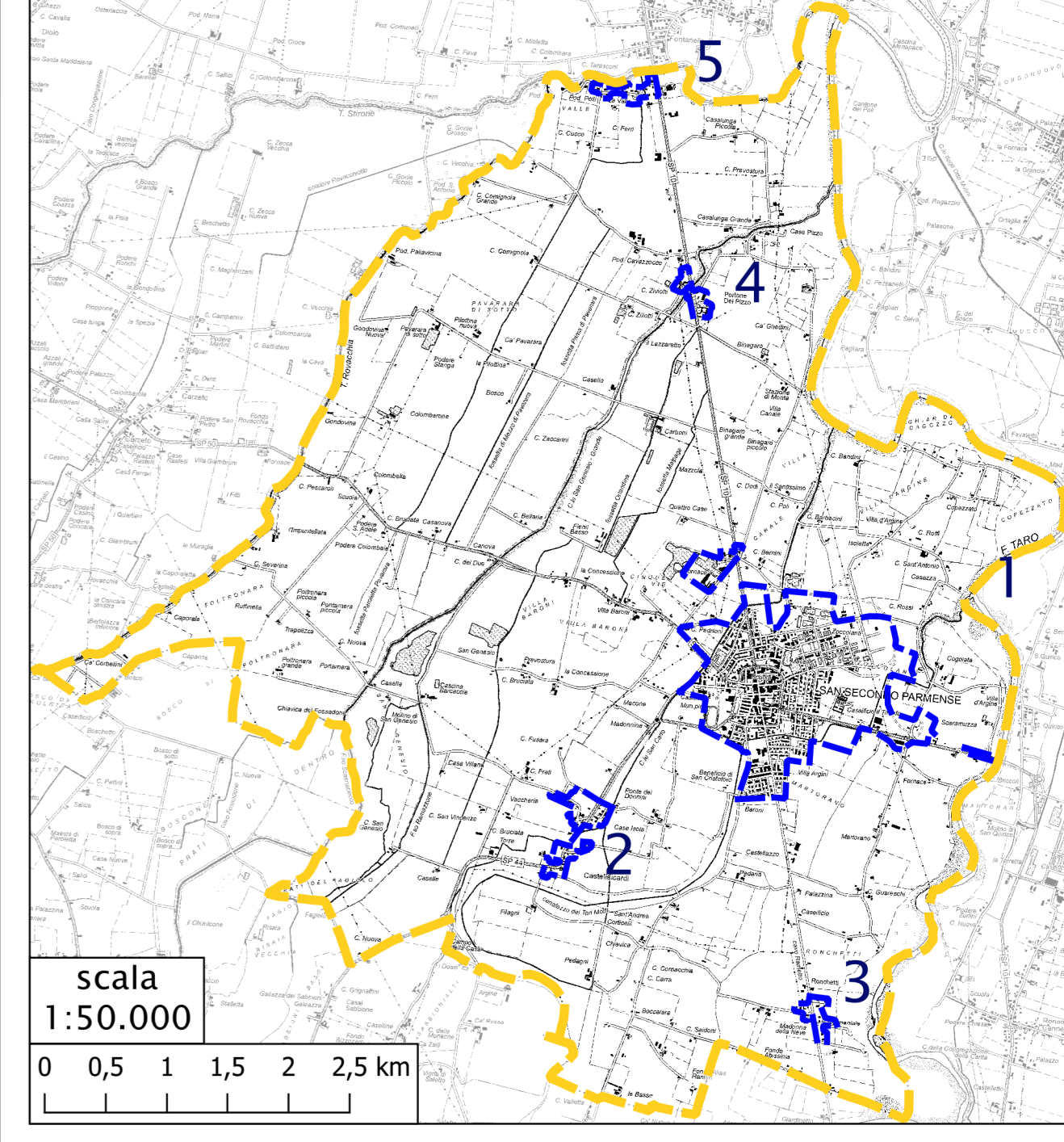
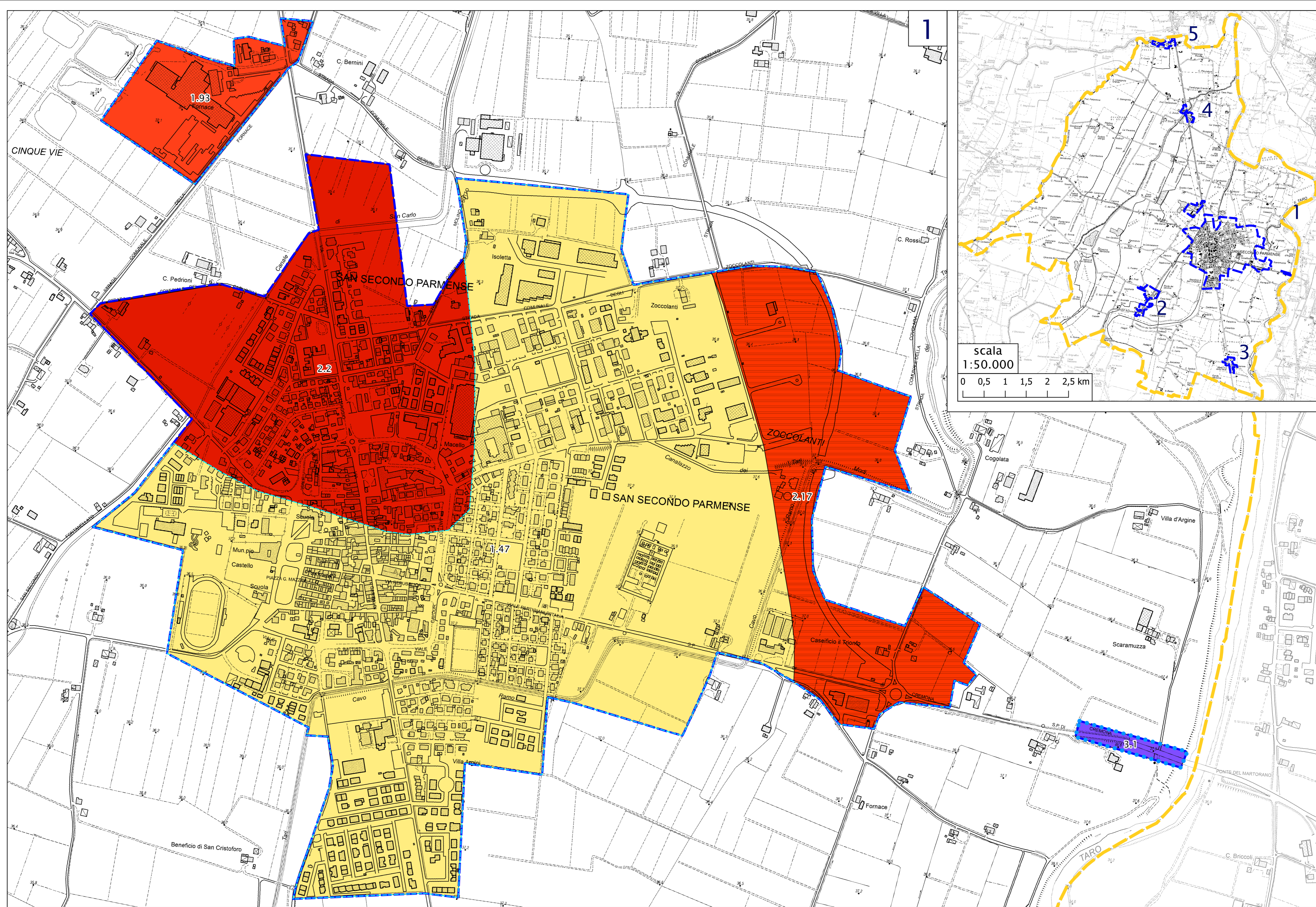
Fa SA2 $(0,4s < T < 0,8 s)$

scala 1:5.000





Regione Emilia-Romagna
Comune di San Secondo







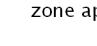
Regione Emilia-Romagna	Soggetto realizzatore Dott. Geol. Fabio Picinotti	Data Marzo 2020
MS3		



Legenda


-  Confine Comunale
-  Area oggetto di microzonazione sismica di II livello
-  Area oggetto di microzonazione sismica di III livello
-  Area oggetto di Risposta Sismica Locale (RSL)

Zone stabili suscettibili di amplificazioni locali

-  Fa SA2 $(0,4s < T < 0,8 s)$ 1.3 - 1.4
-  Fa SA2 $(0,4s < T < 0,8 s)$ 1.9 - 2.0
-  Fa SA2 $(0,4s < T < 0,8 s)$ 2.1 - 2.0
-  Fa SA2 $(0,4s < T < 0,8 s)$ 2.5 - 3.0
-  Fa SA2 $(0,4s < T < 0,8 s)$ 3.1 - 3.5

I fattori amplificativi relativi alle zone stabili suscettibili di amplificazione locale, sono stati stimati sulla base delle tabelle della DGR 630/2019 riferite alle zone appartenenti al MARGINE di tipo A per le quali non vengono indicati i fattori amplificativi nel periodo $0,5s < T < 1,5s$

Zone suscettibili di instabilità (livello 3)

-  $Zs_{(L)}$ Zone suscettibili per liquefazioni Fa SA2 $(0,4s < T < 0,8 s)$ 2.1 - 2.2