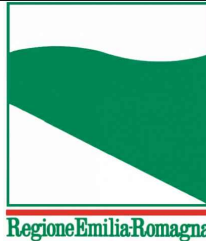




PROTEZIONE CIVILE
Presidenza del Consiglio dei Ministri
Dipartimento della Protezione Civile



Regione Emilia-Romagna



CONFERENZA DELLE REGIONI E
DELLE PROVINCE AUTONOME

Attuazione dell'articolo 11 della legge 24 giugno 2009, n. 77

MICROZONAZIONE SISMICA

Prove penetrometriche con punta elettrica e piezocono

Regione Emilia-Romagna
Comune di Soragna



<p>Regione Emilia-Romagna</p>	<p>Soggetto realizzatore</p>  <p>EN GEO S.r.l. ENGINEERING GEOLOGY www.engeo.it</p> <p><u>Direzione tecnica</u> Dott. Geol. Carlo Caleffi Dott. Geol. Francesco Cerutti</p> <p><u>Collaboratori</u> Dott. Geol. Matteo Baisi Dott.ssa Geol. Melinda Raimondo Dott. Lorenzo Dalle Luche</p>	<p>Data Ottobre 2022</p> <p>MS3</p>
-----------------------------------	--	--

FERRARA DEPARTMENT

Via Annibale Zucchini, 69 - 44122 Ferrara (FE)

Tel.: +39 0532 56771 - Fax.: +39 0532 56119

SOCOTEC ITALIA Srl - P.Iva 01872430648

Headquarters: Via Bariola, 101-103 - 20020 Lainate (MI)

Tel.: +39 02 9375 0000 - Fax: +39 02 9375 0099

www.socotec.it



COMMITTENTE: ENGE0 S.r.l. - Via Suor Maria Adorni, 2

CANTIERE: Soragna (PR) - Strada Provinciale 12

PROVA N°: CPTU 01 PROF. FALDA (m da p.c.): 2.80

PUNTA: Tecnopenta G1-CPL2IN (matr. 121114)[a = 0.66]

DATA: 26/10/22

PREFORO (m da p.c.):

LAT. (WGS 84): 44.911586°

LONG. (WGS 84): 10.104950°

COMMESSA: 21399FE/20

C. SITO N°: SF221122 del 08.11.22 OPERATORE: L. Formisano

prof. m	qc Mpa	fs kPa	U kPa	incl. gradi	prof. m	qc Mpa	fs kPa	U kPa	incl. gradi	prof. m	qc Mpa	fs kPa	U kPa	incl. gradi	prof. m	qc Mpa	fs kPa	U kPa	incl. gradi	prof. m	qc Mpa	fs kPa	U kPa	incl. gradi
0.02	1.03	4.40	2.19	0.03	2.02	0.98	81.29	76.30	0.58	4.02	1.04	59.02	39.50	1.13	6.02	1.41	62.43	134.55	1.68	8.02	1.33	136.20	159.99	2.23
0.04	1.54	10.22	1.10	0.03	2.04	0.94	80.81	95.15	0.58	4.04	1.10	59.34	43.09	1.13	6.04	1.39	59.84	136.25	1.68	8.04	1.21	133.58	157.79	2.23
0.06	2.12	14.02	1.20	0.04	2.06	0.93	77.72	101.24	0.59	4.06	1.10	59.34	43.69	1.14	6.06	1.40	57.96	136.05	1.69	8.06	1.11	130.19	156.29	2.24
0.08	2.20	19.28	0.70	0.04	2.08	0.92	75.90	95.65	0.59	4.08	1.13	60.07	44.38	1.14	6.08	1.50	57.09	136.15	1.69	8.08	1.03	126.71	154.80	2.24
0.10	2.49	25.29	1.20	0.05	2.10	0.89	74.82	74.01	0.60	4.10	1.19	59.24	44.78	1.15	6.10	1.67	54.83	137.04	1.70	8.10	0.97	121.92	153.80	2.25
0.12	2.57	26.72	0.90	0.05	2.12	0.82	73.70	53.66	0.60	4.12	1.21	58.51	44.58	1.15	6.12	1.78	52.18	137.34	1.70	8.12	0.93	118.18	153.40	2.25
0.14	2.74	27.27	0.90	0.06	2.14	0.78	71.05	60.24	0.61	4.14	1.21	59.53	44.48	1.16	6.14	1.75	49.98	136.05	1.71	8.14	0.85	113.42	153.00	2.26
0.16	2.52	40.97	0.10	0.06	2.16	0.74	68.50	105.63	0.61	4.16	1.19	60.58	44.38	1.16	6.16	1.68	47.36	134.75	1.71	8.16	0.80	101.93	153.10	2.26
0.18	2.92	41.35	0.70	0.07	2.18	0.74	67.39	138.94	0.62	4.18	1.15	61.96	44.09	1.17	6.18	1.68	47.65	134.15	1.72	8.18	0.81	92.41	153.20	2.27
0.20	3.32	41.06	0.80	0.07	2.20	0.73	68.06	149.21	0.62	4.20	1.13	64.48	43.99	1.17	6.20	1.62	54.10	133.25	1.72	8.20	0.80	84.30	153.50	2.27
0.22	3.02	45.60	1.40	0.08	2.22	0.74	64.10	98.94	0.63	4.22	1.13	65.09	43.89	1.18	6.22	1.61	60.03	132.66	1.73	8.22	0.81	78.81	153.90	2.28
0.24	3.21	48.95	1.50	0.08	2.24	0.74	61.33	83.58	0.63	4.24	1.13	65.98	44.38	1.18	6.24	1.58	63.99	132.06	1.73	8.24	0.82	76.06	154.50	2.28
0.26	3.35	51.32	2.29	0.09	2.26	0.72	58.87	68.82	0.64	4.26	1.13	65.66	45.28	1.19	6.26	1.50	69.36	131.46	1.74	8.26	0.86	73.70	155.40	2.29
0.28	3.21	59.05	4.09	0.09	2.28	0.71	56.99	68.22	0.64	4.28	1.16	64.55	46.98	1.19	6.28	1.40	74.72	131.26	1.74	8.28	0.86	73.45	155.90	2.29
0.30	2.97	54.41	10.27	0.10	2.30	0.70	55.43	75.30	0.65	4.30	1.18	64.26	47.68	1.20	6.30	1.40	74.50	133.15	1.75	8.30	0.95	73.70	156.79	2.30
0.32	3.15	59.05	11.77	0.11	2.32	0.71	53.55	61.24	0.66	4.32	1.12	62.58	46.78	1.21	6.32	1.40	75.17	135.75	1.76	8.32	0.98	73.86	157.19	2.31
0.34	2.98	66.44	12.87	0.12	2.34	0.68	54.86	56.65	0.67	4.34	1.24	61.52	47.18	1.22	6.34	1.37	80.15	138.64	1.77	8.34	0.99	75.14	157.49	2.32
0.36	2.96	64.30	13.96	0.12	2.36	0.69	56.23	58.45	0.67	4.36	1.26	60.34	47.18	1.22	6.36	1.35	84.33	144.53	1.77	8.36	1.01	76.42	157.89	2.32
0.38	3.06	66.19	14.66	0.13	2.38	0.69	57.23	68.82	0.68	4.38	1.27	59.92	47.98	1.23	6.38	1.34	88.45	156.29	1.78	8.38	1.01	76.77	157.79	2.33
0.40	3.05	78.36	15.16	0.13	2.40	0.68	56.21	64.83	0.68	4.40	1.27	59.22	47.48	1.23	6.40	1.37	88.16	160.08	1.78	8.40	1.03	76.61	157.39	2.33
0.42	3.12	76.26	15.56	0.14	2.42	0.67	55.95	60.64	0.69	4.42	1.25	60.24	47.08	1.24	6.42	1.45	86.09	162.48	1.79	8.42	0.98	76.58	156.59	2.34
0.44	3.16	80.12	15.56	0.14	2.44	0.65	54.77	60.24	0.69	4.44	1.23	62.22	46.58	1.24	6.44	1.58	77.47	162.08	1.79	8.44	0.92	75.43	155.10	2.34
0.46	3.50	81.34	14.86	0.15	2.46	0.65	54.75	57.75	0.70	4.46	1.18	66.47	46.08	1.25	6.46	1.60	65.46	161.38	1.80	8.46	0.87	74.82	153.70	2.35
0.48	3.70	92.68	14.76	0.15	2.48	0.64	55.07	66.93	0.70	4.48	1.14	68.51	46.28	1.25	6.48	1.60	61.73	160.88	1.80	8.48	0.84	73.23	153.40	2.35
0.50	3.72	106.19	14.66	0.16	2.50	0.64	54.85	68.42	0.71	4.50	1.15	69.49	47.47	1.26	6.50	1.57	58.79	160.48	1.81	8.50	0.84	67.58	153.40	2.36
0.52	3.76	123.53	14.26	0.16	2.52	0.64	55.07	79.09	0.71	4.52	1.15	68.42	48.97	1.26	6.52	1.57	55.63	159.79	1.81	8.52	0.84	61.09	153.50	2.36
0.54	3.51	122.36	13.96	0.17	2.54	0.64	53.38	77.30	0.72	4.54	1.17	66.95	48.57	1.27	6.54	1.54	52.44	159.39	1.82	8.54	0.85	52.31	153.50	2.37
0.56	3.49	130.34	15.16	0.17	2.56	0.66	50.70	75.11	0.72	4.56	1.12	65.87	48.18	1.27	6.56	1.50	48.54	158.99	1.82	8.56	0.94	44.59	155.20	2.37
0.58	3.39	140.12	15.86	0.18	2.58	0.66	50.48	73.91	0.73	4.58	1.12	63.70	47.88	1.28	6.58	1.47	49.02	158.29	1.83	8.58	1.08	42.58	157.99	2.38
0.60	3.33	154.17	16.06	0.18	2.60	0.66	50.04	69.12	0.73	4.60	1.07	61.43	47.48	1.28	6.60	1.42	52.63	157.69	1.83	8.60	1.26	37.28	159.99	2.38
0.62	3.28	150.88	16.76	0.19	2.62	0.66	49.63	47.88	0.74	4.62	1.06	59.87	47.18	1.29	6.62	1.36	54.42	156.79	1.84	8.62	1.30	34.31	160.08	2.39
0.64	3.25	143.70	17.45	0.19	2.64	0.60	49.60	48.27	0.74	4.64	0.98	59.36	46.48	1.29	6.64	1.27	56.33	155.40	1.84	8.64	1.30	35.27	159.69	2.39
0.66	3.17	136.17	17.95	0.20	2.66	0.60	49.22	49.47	0.75	4.66	0.94	59.52	45.88	1.30	6.66	1.18	57.42	154.20	1.85	8.66	1.32	36.71	159.49	2.40
0.68	3.17	134.92	17.95	0.20	2.68	0.59	49.12	53.96	0.75	4.68	0.89	59.04	45.28	1.30	6.68	1.09	55.82	153.00	1.85	8.68	1.34	36.52	159.29	2.40
0.70	3.20	126.63	17.95	0.21	2.70	0.59	46.70	54.66	0.76	4.70	0.83	57.57	44.78	1.31	6.70	1.03	53.11	152.31	1.86	8.70	1.38	39.17	159.59	2.41
0.72	3.26	122.70	18.35	0.22	2.72	0.63	43.80	57.25	0.77	4.72	0.78	56.68	44.38	1.32	6.72	1.02	48.70	151.81	1.87	8.72	1.40	42.27	159.39	2.42
0.74	3.37	111.78	18.25	0.23	2.74	0.66	42.71	65.63	0.78	4.74	0.76	54.92	44.19	1.33	6.74	1.04	45.86	152.11	1.88	8.74	1.41	48.01	158.99	2.43
0.76	3.47	110.15	18.05	0.23	2.76	0.69	42.52	70.52	0.78	4.76	0.76	51.92	44.09	1.33	6.76	1.02	43.21	152.21	1.88	8.76	1.40	54.34	158.59	2.43
0.78	3.54	110.31	17.85	0.24	2.78	0.69	40.90	55.95	0.79	4.78	0.72	49.66	43.99	1.34	6.78	1.06	41.20	152.50	1.89	8.78	1.37	59.96	157.89	2.44
0.80	3.61	114.66	17.65	0.24	2.80	0.71	40.32	48.47	0.79	4.80	0.69	46.53	43.69	1.34	6.80	1.13	39.83	152.80	1.89	8.80	1.35	64.40	157.49	2.44
0.82	3.75	115.97	17.26	0.25	2.82	0.69	41.67	44.19	0.80	4.82	0.70	42.70	43.39	1.35	6.82	1.15	40.60	152.70	1.90	8.82	1.33	68.90	157.69	2.45
0.84	3.84	125.35	16.96	0.25	2.84	0.67	43.14	44.19	0.80	4.84	0.68	39.06	43.09	1.35	6.84	1.18	41.40	152.40	1.90	8.84	1.34	76.46	154.30	2.45
0.86	3.86	134.90	16.66	0.26	2.86	0.68	42.69	45.88	0.81	4.86	0.66	38.45	42.79	1.36	6.86	1.17	42.23	152.11	1.91	8.86	1.25	77.36	152.60	2.46
0.88	3.88	153.51	17.06	0.26	2.88	0.85	35.64	43.49	0.81	4.88	0.63	36.85	42.49	1.36	6.88	1.23	39.54	149.51	1.91	8.88	1.20	71.42	151.41	2.46
0.90	3.96	165.60	16.76	0.27	2.90	0.85	37.68	43.69	0.82	4.90	0.60	38.27	42.09	1.37	6.90	1.22	42.70	149.31	1.92	8.90	1.19	66.85	150.91	2.47
0.92	3.98	179.98	16.56	0.27	2.92	0.87	37.46	38.																

FERRARA DEPARTMENT

Via Annibale Zucchini, 69 – 44122 Ferrara (FE)

Tel.: +39 0532 56771 - Fax.: +39 0532 56119

SOCOTEC ITALIA Srl – P.Iva 01872430648

Headquarters: Via Bariola, 101-103 - 20020 Lainate (MI)

Tel.: +39 02 9375 0000 - Fax: +39 02 9375 0099

www.socotec.it



COMMITTENTE: ENGE0 S.r.l. - Via Suor Maria Adorni, 2

CANTIERE: Soragna (PR) - Strada Provinciale 12

PROVA N°: CPTU 01 PROF. FALDA (m da p.c.): 2.80

PUNTA: Tecnopenta G1-CPL2IN (matr. 121114)[a = 0.66]

DATA: 26/10/22

PREFORO (m da p.c.):

LAT. (WGS 84): 44.911586°

LONG. (WGS 84): 10.104950°

COMMESSA: 21399FE/20

C. SITO N°: SF221122 del 08.11.22 OPERATORE: L. Formisano

prof. m	qc Mpa	fs kPa	U kPa	incl. gradi	prof. m	qc Mpa	fs kPa	U kPa	incl. gradi	prof. m	qc Mpa	fs kPa	U kPa	incl. gradi	prof. m	qc Mpa	fs kPa	U kPa	incl. gradi	prof. m	qc Mpa	fs kPa	U kPa	incl. gradi
10.02	1.03	44.36	183.32	2.78	12.02	0.85	29.23	184.82	3.33	14.02	1.30	45.99	222.72	3.88	16.02	3.07	76.76	306.31	4.43	18.02	3.01	152.63	314.58	4.98
10.04	1.07	41.93	183.72	2.78	12.04	0.84	29.07	184.62	3.33	14.04	1.30	45.48	221.13	3.88	16.04	3.06	79.79	305.31	4.43	18.04	3.07	151.90	317.58	4.98
10.06	1.12	41.93	184.12	2.79	12.06	0.85	29.19	184.82	3.34	14.06	1.24	45.87	218.43	3.89	16.06	2.85	82.92	301.42	4.44	18.06	2.84	152.82	312.69	4.99
10.08	1.12	43.88	184.12	2.79	12.08	0.88	29.10	185.62	3.34	14.08	1.25	54.14	219.13	3.89	16.08	2.68	86.66	301.52	4.44	18.08	2.61	151.41	308.80	4.99
10.10	1.15	44.58	184.02	2.80	12.10	0.90	28.33	186.22	3.35	14.10	1.31	56.66	220.93	3.90	16.10	2.66	89.05	303.51	4.45	18.10	2.32	132.57	302.52	5.00
10.12	1.13	45.13	183.82	2.80	12.12	0.92	28.37	186.32	3.35	14.12	1.31	59.98	221.82	3.90	16.12	2.85	96.63	306.91	4.45	18.12	2.30	128.66	479.66	5.00
10.14	1.13	48.73	183.42	2.81	12.14	0.92	28.97	186.22	3.36	14.14	1.31	55.45	220.73	3.91	16.14	2.67	99.70	306.10	4.46	18.14	2.31	127.32	457.91	5.01
10.16	1.14	53.30	183.52	2.81	12.16	0.91	31.05	185.92	3.36	14.16	1.25	58.32	219.13	3.91	16.16	2.63	97.53	308.11	4.46	18.16	2.32	125.98	423.20	5.01
10.18	1.14	56.62	183.52	2.82	12.18	0.92	32.01	185.92	3.37	14.18	1.18	60.52	216.84	3.92	16.18	2.62	97.17	309.48	4.47	18.18	2.31	124.99	405.45	5.02
10.20	1.14	58.34	183.03	2.82	12.20	0.94	33.00	185.82	3.37	14.20	1.15	58.64	215.74	3.92	16.20	2.61	96.22	319.29	4.47	18.20	2.07	109.02	382.81	5.02
10.22	1.16	58.09	183.42	2.83	12.22	0.93	35.74	185.72	3.38	14.22	1.12	58.83	215.14	3.93	16.22	2.54	96.98	308.85	4.48	18.22	2.11	110.52	380.51	5.03
10.24	1.16	59.43	183.62	2.83	12.24	0.97	37.66	185.82	3.38	14.24	1.08	61.32	214.74	3.93	16.24	2.55	95.55	314.69	4.48	18.24	2.13	110.74	368.84	5.03
10.26	1.16	60.13	183.62	2.84	12.26	0.99	38.14	186.42	3.39	14.26	1.09	63.40	214.94	3.94	16.26	2.62	98.26	308.71	4.49	18.26	2.12	110.75	378.72	5.04
10.28	1.12	62.08	183.42	2.84	12.28	1.01	37.50	186.82	3.39	14.28	1.06	66.56	215.24	3.94	16.28	2.69	100.36	319.85	4.49	18.28	2.14	111.58	370.34	5.04
10.30	1.14	62.08	183.32	2.85	12.30	1.02	38.20	186.82	3.40	14.30	1.04	61.83	215.44	3.95	16.30	2.77	101.70	315.98	4.50	18.30	2.12	110.44	391.34	5.05
10.32	1.15	61.88	183.32	2.86	12.32	1.02	40.98	187.11	3.41	14.32	1.08	56.31	215.94	3.96	16.32	2.92	103.11	333.84	4.51	18.32	2.24	123.03	335.23	5.06
10.34	1.12	62.46	183.13	2.87	12.34	1.04	41.84	187.21	3.42	14.34	1.10	51.87	216.64	3.97	16.34	2.91	113.49	314.15	4.52	18.34	2.24	125.13	337.33	5.07
10.36	1.09	62.27	183.03	2.87	12.36	1.04	42.55	187.41	3.42	14.36	1.11	50.62	217.04	3.97	16.36	2.81	118.05	309.42	4.52	18.36	2.23	125.19	341.81	5.07
10.38	1.07	63.35	183.32	2.88	12.38	1.07	43.44	187.61	3.43	14.38	1.09	49.22	216.34	3.98	16.38	2.80	120.95	308.32	4.53	18.38	2.19	124.55	340.12	5.08
10.40	1.06	62.20	183.52	2.88	12.40	1.06	45.07	187.31	3.43	14.40	1.07	48.74	215.94	3.98	16.40	2.83	120.48	308.92	4.53	18.40	2.22	123.37	342.01	5.08
10.42	1.04	60.28	183.72	2.89	12.42	1.04	46.54	187.11	3.44	14.42	0.98	45.54	213.05	3.99	16.42	2.88	118.43	305.77	4.54	18.42	2.21	120.37	342.31	5.09
10.44	1.04	58.46	183.62	2.89	12.44	1.04	46.95	186.62	3.44	14.44	0.97	49.02	212.45	3.99	16.44	2.89	117.47	310.06	4.54	18.44	2.35	118.45	347.10	5.09
10.46	1.00	56.87	183.32	2.90	12.46	1.05	47.75	186.32	3.45	14.46	1.09	55.09	214.34	4.00	16.46	2.90	116.45	309.86	4.55	18.46	2.47	113.53	350.89	5.10
10.48	1.00	53.58	183.03	2.90	12.48	1.04	47.78	186.32	3.45	14.48	1.10	53.84	214.74	4.00	16.48	2.94	114.37	311.65	4.55	18.48	2.60	114.49	357.87	5.10
10.50	1.01	49.58	182.63	2.91	12.50	1.06	48.93	186.52	3.46	14.50	1.08	54.29	214.54	4.01	16.50	2.93	113.83	310.08	4.56	18.50	2.67	124.90	360.76	5.11
10.52	1.03	45.88	182.23	2.91	12.52	1.10	50.08	187.31	3.46	14.52	1.07	55.28	214.14	4.01	16.52	2.91	113.80	319.49	4.56	18.52	2.54	122.60	377.48	5.11
10.54	1.00	46.49	181.73	2.92	12.54	1.16	49.66	188.11	3.47	14.54	1.04	54.86	213.55	4.02	16.54	2.89	114.34	309.62	4.57	18.54	2.41	117.52	388.87	5.12
10.56	0.98	48.11	181.53	2.92	12.56	1.21	49.28	188.91	3.47	14.56	1.02	52.88	212.95	4.02	16.56	2.89	114.11	309.75	4.57	18.56	2.39	112.29	388.01	5.12
10.58	1.00	48.85	181.73	2.93	12.58	1.24	47.24	189.31	3.48	14.58	1.01	50.78	212.85	4.03	16.58	2.96	113.28	313.31	4.58	18.58	2.46	107.53	374.49	5.13
10.60	0.97	48.97	182.03	2.93	12.60	1.26	45.80	189.01	3.48	14.60	0.99	51.51	212.65	4.03	16.60	2.93	117.24	317.80	4.58	18.60	2.49	103.66	394.56	5.13
10.62	0.97	48.94	182.43	2.94	12.62	1.25	46.15	189.71	3.49	14.62	1.01	53.17	212.55	4.04	16.62	2.95	122.16	308.98	4.59	18.62	2.44	101.89	367.73	5.14
10.64	0.98	49.23	182.83	2.94	12.64	1.22	47.20	189.71	3.49	14.64	1.00	52.53	212.55	4.04	16.64	2.97	122.67	308.88	4.59	18.64	2.46	103.89	357.31	5.14
10.66	1.00	48.17	183.22	2.95	12.66	1.21	46.85	189.41	3.50	14.66	1.00	52.15	212.45	4.05	16.66	3.01	124.36	309.86	4.60	18.66	2.46	106.54	352.72	5.15
10.68	0.98	46.93	183.52	2.95	12.68	1.15	48.64	188.71	3.50	14.68	1.02	51.22	212.95	4.05	16.68	3.29	125.38	308.92	4.60	18.68	2.37	105.64	474.47	5.15
10.70	0.95	40.96	182.73	2.96	12.70	1.11	49.72	188.11	3.51	14.70	1.06	51.00	213.65	4.06	16.70	3.26	128.09	300.64	4.61	18.70	2.31	105.80	466.89	5.16
10.72	0.94	39.23	181.93	2.97	12.72	1.00	51.80	186.62	3.52	14.72	1.09	51.28	214.34	4.07	16.72	2.85	136.13	289.49	4.62	18.72	2.26	107.56	481.05	5.17
10.74	1.09	46.58	183.32	2.98	12.74	0.90	50.78	184.82	3.53	14.74	1.14	51.38	213.34	4.08	16.74	2.79	138.91	301.08	4.63	18.74	2.17	110.72	484.74	5.18
10.76	1.09	46.35	183.42	2.98	12.76	0.89	49.40	183.82	3.53	14.76	1.20	51.92	216.64	4.08	16.76	2.71	137.76	307.02	4.63	18.76	2.16	110.49	485.34	5.18
10.78	1.10	45.97	183.52	2.99	12.78	0.85	50.78	182.93	3.54	14.78	1.25	52.40	218.13	4.09	16.78	2.69	137.66	309.26	4.64	18.78	2.16	109.09	487.84	5.19
10.80	1.12	45.97	183.82	2.99	12.80	0.82	52.28	183.13	3.54	14.80	1.32	52.85	219.23	4.09	16.80	2.83	131.66	308.54	4.64	18.80	2.20	106.76	494.62	5.19
10.82	1.12	47.63	183.82	3.00	12.82	0.82	49.31	183.13	3.55	14.82	1.38	54.13	220.33	4.10	16.82	2.42	147.24	305.09	4.65	18.82	2.26	103.40	500.10	5.20
10.84	1.12	48.94	183.42	3.00	12.84	0.82	46.59	183.32	3.55	14.84	1.44	55.23	221.13	4.10	16.84	2.29	142.80	337.11	4.65	18.84	2.33	101.46	503.69	5.20
10.86	1.13	49.83	183.72	3.01	12.86	0.84	44.20	184.02	3.56	14.86	1.47	58.02	222.02	4.11	16.86	2.22	137.66	308.83	4.66	18.86	2.29	100.59	504.39	5.21
10.88	1.14	50.25	183.72	3.01	12.88	0.83	39.95	184.42	3.56	14.88	1.53	59.55	222.32	4.11	16.88	2.23								

FERRARA DEPARTMENT

Via Annibale Zucchini, 69 – 44122 Ferrara (FE)

Tel.: +39 0532 56771 - Fax.: +39 0532 56119

SOCOTEC ITALIA Srl – P.Iva 01872430648

Headquarters: Via Bariola, 101-103 - 20020 Lainate (MI)

Tel.: +39 02 9375 0000 - Fax: +39 02 9375 0099

www.socotec.it



COMMITTENTE: ENGE0 S.r.l. - -Via Suor Maria Adorni, 2

CANTIERE: Soragna (PR) - Strada Provinciale 12

PROVA N°: CPTU 01 PROF. FALDA (m da p.c.): 2.80

DATA: 26/10/22

PREFORO (m da p.c.):

PUNTA: Tecnopenta G1-CPL2IN (matr. 121114)[a = 0.66]

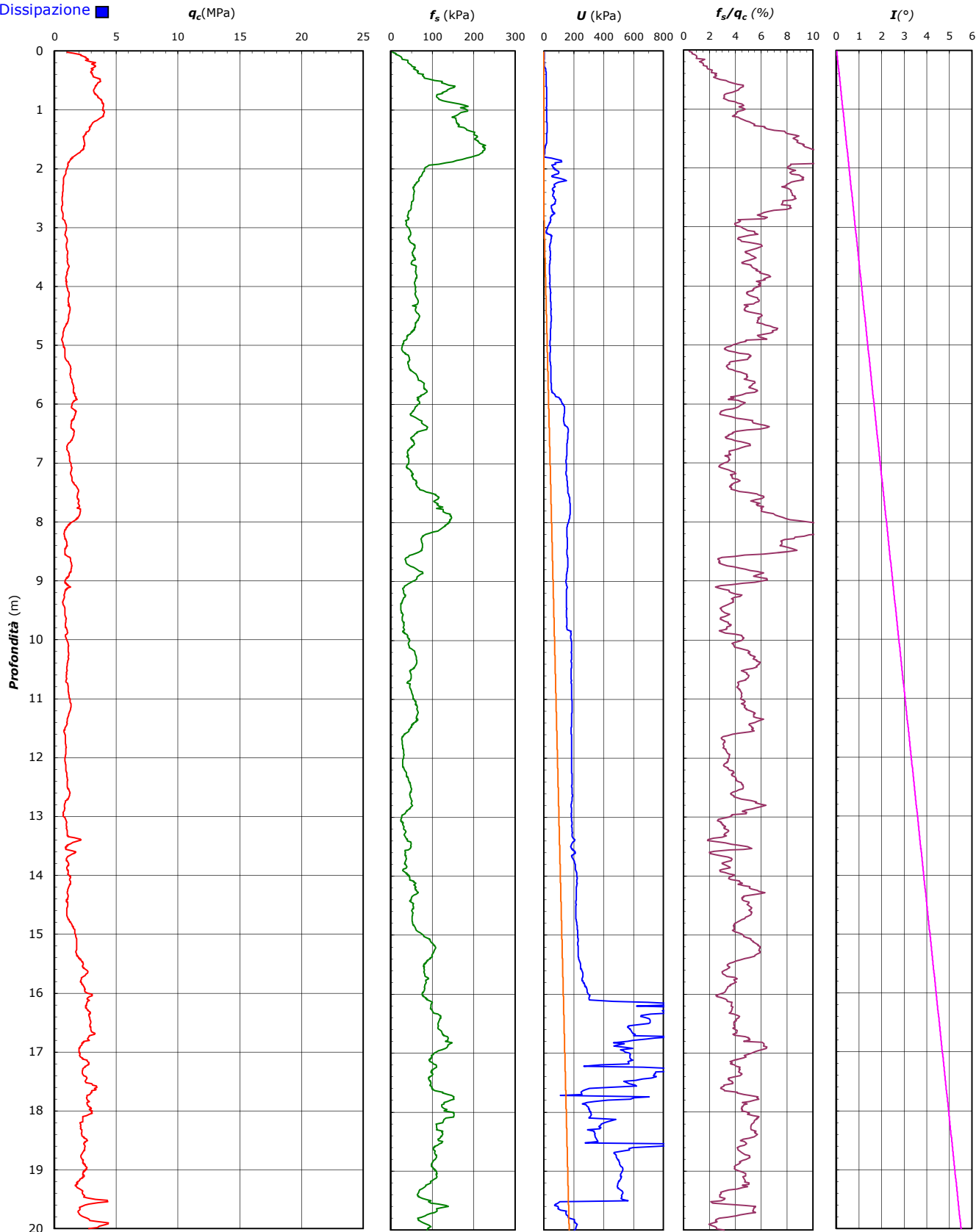
LAT. (WGS 84): 44.911586°

LONG. (WGS 84): 10.104950°

COMMESSA: 21399FE/20

C. SITO N°: SF221122 del 08.11.22 OPERATORE: L. Formisano

Dissipazione



FERRARA DEPARTMENT

Via Annibale Zucchini, 69 – 44122 Ferrara (FE)

Tel.: +39 0532 56771 - Fax.: +39 0532 56119

SOCOTEC ITALIA Srl – P.Iva 01872430648

Headquarters: Via Bariola, 101-103 - 20020 Lainate (MI)

Tel.: +39 02 9375 0000 - Fax: +39 02 9375 0099

www.socotec.it



COMMITTENTE: ENGEO S.r.l. - -Via Suor Maria Adorni, 2

CANTIERE: Soragna (PR) - Strada Provinciale 12

PROVA N°: CPTU 01 PROF. FALDA (m da p.c.): 2.80 PUNTA: Tecnopenta G1-CPL2IN (matr. 121114)[a = 0.66]
DATA: 26/10/22 PREFORO (m da p.c.): LAT. (WGS 84): 44.911586° LONG. (WGS 84): 10.104950°
COMMESSA: 21399FE/20 C. SITO N°: SF221122 del 08.11.22 OPERATORE: L. Formisano

UBICAZIONE

Località: Soragna (PR) - Strada Provinciale 12



NOTE: Utilizzato 1 anello allargatore da inizio prova

FERRARA DEPARTMENT

Via Annibale Zucchini, 69 - 44122 Ferrara (FE)

Tel.: +39 0532 56771 - Fax.: +39 0532 56119

SOCOTEC ITALIA Srl - P.Iva 01872430648

Headquarters: Via Bariola, 101-103 - 20020 Lainate (MI)

Tel.: +39 02 9375 0000 - Fax: +39 02 9375 0099

www.socotec.it



COMMITTENTE: ENGE0 S.r.l. - Via Suor Maria Adorni, 2

CANTIERE: Str Rossetti - Pongennaro - 43019 (PR)

PROVA N°: CPTU 02 PROF. FALDA (m da p.c.): n.r. PUNTA: Tecnopenta G1-CPL2IN (matr. 121114)[a = 0.66]

DATA: 24/10/22 PREFORO (m da p.c.): n.r. LAT. (WGS 84): 44.922915° LONG. (WGS 84): 10.138049°

COMMESSA: 0345FE/22 C. SITO N°: SF221123 del 08.11.22 OPERATORE: L. Formisano

prof. m	qc Mpa	fs kPa	U kPa	incl. gradi	prof. m	qc Mpa	fs kPa	U kPa	incl. gradi	prof. m	qc Mpa	fs kPa	U kPa	incl. gradi	prof. m	qc Mpa	fs kPa	U kPa	incl. gradi	prof. m	qc Mpa	fs kPa	U kPa	incl. gradi
0.02	4.23	6.64	34.51	0.02	2.02	2.96	218.77	7.88	0.77	4.02	0.80	30.39	17.55	1.51	6.02	6.18	21.20	40.50	2.26	8.02	1.53	82.15	13.76	3.00
0.04	5.03	12.03	36.21	0.03	2.04	2.99	218.58	8.58	0.78	4.04	0.78	30.29	20.05	1.52	6.04	5.75	18.36	36.21	2.27	8.04	1.56	76.56	14.96	3.01
0.06	4.90	27.49	22.24	0.04	2.06	3.01	224.49	8.98	0.78	4.06	0.85	31.35	20.35	1.53	6.06	4.67	18.29	27.23	2.27	8.06	1.61	70.85	16.26	3.02
0.08	4.67	41.95	18.25	0.05	2.08	3.06	226.07	9.18	0.79	4.08	0.95	28.99	21.54	1.54	6.08	3.91	20.94	23.14	2.28	8.08	1.62	65.93	16.96	3.03
0.10	4.46	64.40	17.45	0.05	2.10	3.11	226.03	8.68	0.80	4.10	1.04	27.81	21.44	1.54	6.10	3.69	36.14	23.34	2.29	8.10	1.68	62.54	17.65	3.03
0.12	4.48	71.58	16.76	0.06	2.12	3.17	224.33	7.88	0.81	4.12	1.09	29.19	22.64	1.55	6.12	3.24	73.78	19.35	2.30	8.12	1.71	61.55	17.95	3.04
0.14	4.53	76.53	15.76	0.07	2.14	3.18	221.00	7.08	0.81	4.14	1.16	31.78	23.74	1.56	6.14	3.57	73.78	38.70	2.30	8.14	1.74	61.71	17.65	3.05
0.16	4.50	92.91	17.36	0.08	2.16	3.19	213.22	6.18	0.82	4.16	1.19	33.79	24.34	1.57	6.16	4.22	78.51	50.37	2.31	8.16	1.77	66.06	17.45	3.06
0.18	4.42	111.20	13.37	0.08	2.18	3.12	210.07	4.59	0.83	4.18	1.16	37.15	24.94	1.57	6.18	4.78	84.77	54.56	2.32	8.18	1.77	69.41	16.46	3.06
0.20	4.23	131.51	12.27	0.09	2.20	3.06	207.12	4.29	0.84	4.20	1.16	39.35	25.73	1.58	6.20	5.09	78.41	55.56	2.33	8.20	1.78	70.81	13.27	3.07
0.22	3.79	143.05	14.06	0.10	2.22	2.95	206.99	3.69	0.84	4.22	1.12	43.35	27.13	1.59	6.22	5.21	73.85	55.56	2.33	8.22	1.74	75.19	11.57	3.08
0.24	3.70	153.94	8.98	0.11	2.24	2.85	205.32	3.49	0.85	4.24	1.07	49.26	24.94	1.60	6.24	5.32	69.12	56.45	2.34	8.24	1.69	79.72	9.28	3.09
0.26	3.52	165.31	7.08	0.11	2.26	2.85	205.06	3.99	0.86	4.26	1.05	49.93	26.03	1.60	6.26	5.47	57.31	57.45	2.35	8.26	1.60	87.19	8.58	3.09
0.28	3.54	162.66	5.19	0.12	2.28	2.90	202.98	5.19	0.87	4.28	1.02	48.21	27.13	1.61	6.28	5.66	45.14	59.45	2.36	8.28	1.55	90.83	8.78	3.10
0.30	3.35	170.58	3.59	0.13	2.30	2.96	203.40	6.58	0.87	4.30	1.00	47.42	27.23	1.62	6.30	5.88	36.07	60.24	2.36	8.30	1.53	91.95	8.68	3.11
0.32	3.31	176.58	3.89	0.13	2.32	3.05	198.99	7.48	0.88	4.32	0.99	44.32	26.43	1.63	6.32	6.07	33.84	61.34	2.37	8.32	1.54	91.79	9.28	3.12
0.34	3.30	177.28	4.79	0.14	2.34	3.00	193.18	4.29	0.89	4.34	1.01	40.36	24.24	1.63	6.34	6.77	38.15	65.83	2.38	8.34	1.57	89.62	10.57	3.12
0.36	3.45	179.51	6.98	0.15	2.36	2.89	185.77	2.39	0.90	4.36	1.09	36.41	17.85	1.64	6.36	7.56	42.20	66.33	2.39	8.36	1.57	85.91	10.87	3.13
0.38	3.50	180.41	7.38	0.16	2.38	2.78	181.24	0.70	0.90	4.38	1.13	33.76	13.17	1.65	6.38	7.88	46.64	65.43	2.39	8.38	1.59	82.72	11.17	3.14
0.40	3.68	179.60	10.57	0.16	2.40	2.61	180.09	0.90	0.91	4.40	1.13	34.15	14.36	1.66	6.40	7.84	48.43	63.04	2.40	8.40	1.58	76.72	10.87	3.15
0.42	3.71	178.87	9.87	0.17	2.42	2.56	174.34	0.92	0.92	4.42	1.12	36.00	16.56	1.66	6.42	7.83	51.49	63.14	2.41	8.42	1.64	73.68	11.37	3.15
0.44	3.52	191.73	5.49	0.18	2.44	2.61	175.65	3.99	0.92	4.44	1.26	35.30	14.56	1.67	6.44	7.70	52.04	62.64	2.42	8.44	1.67	71.80	12.27	3.16
0.46	3.71	192.02	8.88	0.19	2.46	2.60	167.54	2.09	0.93	4.46	1.52	36.10	9.58	1.68	6.46	7.05	55.48	56.35	2.42	8.46	1.70	72.02	13.86	3.17
0.48	3.78	198.69	9.18	0.19	2.48	2.58	167.00	1.60	0.94	4.48	1.92	39.11	5.39	1.69	6.48	6.07	65.67	50.37	2.43	8.48	1.76	70.78	15.06	3.18
0.50	3.57	209.29	4.79	0.20	2.50	2.68	169.52	3.39	0.95	4.50	2.18	42.94	9.87	1.69	6.50	4.70	76.68	39.00	2.44	8.50	1.74	71.83	13.96	3.18
0.52	3.53	212.09	4.59	0.21	2.52	2.70	168.40	3.69	0.95	4.52	2.25	45.24	12.07	1.70	6.52	3.28	108.19	28.43	2.45	8.52	1.75	72.82	12.87	3.19
0.54	3.46	214.60	4.79	0.22	2.54	2.83	163.07	5.19	0.96	4.54	2.32	47.29	14.86	1.71	6.54	2.35	134.95	22.94	2.45	8.54	1.72	72.60	11.57	3.20
0.56	3.55	213.21	7.28	0.22	2.56	2.79	163.33	2.99	0.97	4.56	2.42	48.57	15.96	1.72	6.56	1.85	156.37	21.44	2.46	8.56	1.66	74.13	9.77	3.21
0.58	3.71	202.37	9.58	0.23	2.58	2.74	166.39	0.10	0.98	4.58	2.21	52.88	22.34	1.72	6.58	1.70	150.72	25.63	2.47	8.58	1.62	74.38	8.48	3.21
0.60	3.70	200.07	7.08	0.24	2.60	2.64	167.86	1.40	0.98	4.60	2.04	57.67	26.93	1.73	6.60	1.62	141.08	26.43	2.48	8.60	1.59	76.94	7.68	3.22
0.62	3.64	189.56	5.29	0.25	2.62	2.73	165.18	0.20	0.99	4.62	1.84	64.09	29.12	1.74	6.62	1.57	128.98	26.73	2.48	8.62	1.58	80.10	7.78	3.23
0.64	3.61	178.41	4.69	0.25	2.64	2.93	162.98	3.89	1.00	4.64	1.54	70.57	30.72	1.74	6.64	1.51	117.29	25.63	2.49	8.64	1.60	81.73	7.88	3.24
0.66	3.68	174.00	6.88	0.26	2.66	3.20	163.24	8.78	1.01	4.66	1.42	73.32	29.92	1.75	6.66	1.51	104.17	25.43	2.50	8.66	1.55	84.09	7.48	3.24
0.68	3.65	173.39	5.59	0.27	2.68	3.52	161.58	12.07	1.01	4.68	1.33	78.91	26.93	1.76	6.68	1.48	83.79	26.43	2.51	8.68	1.55	86.42	8.08	3.25
0.70	3.72	170.61	7.48	0.28	2.70	3.70	151.62	11.57	1.02	4.70	1.48	78.59	17.65	1.77	6.70	1.45	68.95	25.43	2.51	8.70	1.58	84.60	8.88	3.26
0.72	3.76	172.07	8.18	0.28	2.72	3.67	142.43	8.08	1.03	4.72	1.60	72.98	12.77	1.77	6.72	1.43	63.80	24.64	2.52	8.72	1.59	85.05	9.97	3.27
0.74	3.68	168.97	6.78	0.29	2.74	3.55	129.34	3.39	1.04	4.74	1.77	67.55	16.86	1.78	6.74	1.40	63.36	23.84	2.53	8.74	1.62	78.41	11.17	3.28
0.76	3.70	165.04	8.18	0.30	2.76	3.35	124.77	1.20	1.04	4.76	2.17	64.52	15.46	1.79	6.76	1.38	62.08	22.14	2.53	8.76	1.64	75.79	11.47	3.28
0.78	3.68	163.05	8.98	0.31	2.78	3.91	115.23	12.47	1.05	4.78	2.49	63.43	22.44	1.80	6.78	1.42	60.64	23.64	2.54	8.78	1.64	71.96	11.17	3.29
0.80	3.87	160.88	13.96	0.31	2.80	4.79	111.11	21.64	1.06	4.80	2.68	59.70	24.14	1.80	6.80	1.39	58.89	21.64	2.55	8.80	1.65	71.78	19.45	3.30
0.82	4.01	160.39	16.36	0.32	2.82	5.82	116.51	22.54	1.07	4.82	2.47	61.68	25.43	1.81	6.82	1.42	56.65	22.14	2.56	8.82	1.65	72.42	18.25	3.30
0.84	4.04	158.22	15.76	0.33	2.84	6.69	125.49	24.84	1.07	4.84	2.06	63.31	27.63	1.82	6.84	1.50	51.30	33.21	2.56	8.84	1.62	75.65	17.16	3.31
0.86	3.34	135.38	0.50	0.34	2.86	6.61	118.13	21.05	1.08	4.86	1.51	72.15	23.54	1.83	6.86	1.50	49.17	31.92	2.57	8.86	1.60	77.50	17.16	3.32
0.88	4.16	138.51	16.26	0.34	2.88	6.56	105.11	15.06	1.09	4.88	1.29	82.02	25.53	1.83	6.88	1.47	46.49	30.22	2.58	8.88	1.62	78.91	18.45	3.32
0.90	4.15	145.85	12.37	0.35	2.90	6.71	88.38	16.26	1.10	4.90	1.20	89.65	21.64	1.84	6.90	1.50	45.79	29.12	2.59	8.90	1.71	79.23	20.85	3.33
0.92	4.16	154.92	10.87	0.36	2.92	7.14	70.22	21.84	1.10	4.92	1.32	89.87	28.63	1.85	6.92	1.52	46.30	27.93	2.59	8.92	1.75	76.86	21.44	3.34
0.94	4.10	169.73	9.38	0.37	2.94	7.56	55.63	23.04	1.11	4.94	1.67	85.24												

FERRARA DEPARTMENT

Via Annibale Zucchini, 69 – 44122 Ferrara (FE)

Tel.: +39 0532 56771 - Fax.: +39 0532 56119

SOCOTEC ITALIA Srl – P.Iva 01872430648

Headquarters: Via Bariola, 101-103 - 20020 Lainate (MI)

Tel.: +39 02 9375 0000 - Fax: +39 02 9375 0099

www.socotec.it



COMMITTENTE: ENGE0 S.r.l. - Via Suor Maria Adorni, 2

CANTIERE: Str Rossetti - Pongennaro - 43019 (PR)

PROVA N°: CPTU 02 PROF. FALDA (m da p.c.): n.r. PUNTA: Tecnopenta G1-CPL2IN (matr. 121114)[a = 0.66]

DATA: 24/10/22 PREFORO (m da p.c.): LAT. (WGS 84): 44.922915° LONG. (WGS 84): 10.138049°

COMMESSA: 0345FE/22 C. SITO N°: SF221123 del 08.11.22 OPERATORE: L. Formisano

prof. m	qc Mpa	fs kPa	U kPa	incl. gradi	prof. m	qc Mpa	fs kPa	U kPa	incl. gradi	prof. m	qc Mpa	fs kPa	U kPa	incl. gradi	prof. m	qc Mpa	fs kPa	U kPa	incl. gradi	prof. m	qc Mpa	fs kPa	U kPa	incl. gradi
10.02	1.40	42.91	38.80	3.75	12.02	1.73	90.00	55.44	4.49	14.02	7.56	88.99	130.66	5.24	16.02	7.66	149.12	70.62	5.99	18.02	5.68	150.86	63.64	6.73
10.04	1.46	43.45	39.10	3.76	12.04	1.73	91.43	55.04	4.50	14.04	6.74	72.29	115.00	5.25	16.04	7.30	142.95	63.83	5.99	18.04	6.45	149.87	69.62	6.74
10.06	1.44	46.80	39.60	3.76	12.06	1.75	86.31	54.86	4.51	14.06	5.50	54.47	99.14	5.26	16.06	7.12	139.79	60.14	6.00	18.06	3.76	119.25	61.34	6.75
10.08	1.48	50.86	40.20	3.77	12.08	1.76	87.05	55.86	4.52	14.08	4.59	64.56	92.66	5.26	16.08	6.97	118.14	59.15	6.01	18.08	6.96	120.34	69.02	6.75
10.10	1.56	53.83	41.29	3.78	12.10	1.77	87.80	56.85	4.52	14.10	3.43	126.05	78.20	5.27	16.10	6.14	106.81	50.77	6.02	18.10	7.73	120.66	73.31	6.76
10.12	1.60	57.18	41.49	3.79	12.12	1.79	87.54	57.85	4.53	14.12	4.04	123.30	105.43	5.28	16.12	4.95	116.45	42.59	6.02	18.12	8.31	119.83	75.90	6.77
10.14	1.65	58.59	41.89	3.79	12.14	1.83	81.99	62.24	4.54	14.14	5.19	114.36	117.30	5.29	16.14	4.16	143.33	37.60	6.03	18.14	8.83	115.64	76.60	6.78
10.16	1.68	62.39	41.59	3.80	12.16	1.92	81.57	61.54	4.55	14.16	6.00	123.62	124.78	5.29	16.16	3.71	178.93	36.90	6.04	18.16	9.04	109.51	76.20	6.78
10.18	1.69	65.07	40.99	3.81	12.18	1.91	81.31	61.04	4.55	14.18	6.52	128.44	128.37	5.30	16.18	3.46	197.55	42.79	6.05	18.18	9.02	115.77	72.21	6.79
10.20	1.70	69.51	41.19	3.82	12.20	1.85	83.90	60.04	4.56	14.20	5.67	123.45	110.61	5.31	16.20	3.07	177.66	37.10	6.05	18.20	8.80	117.49	71.51	6.80
10.22	1.70	73.12	40.59	3.82	12.22	1.82	82.52	60.24	4.57	14.22	4.55	118.98	93.86	5.31	16.22	2.57	183.94	32.12	6.06	18.22	8.68	123.40	70.02	6.81
10.24	1.71	74.81	39.90	3.83	12.24	1.83	79.11	62.04	4.58	14.24	3.54	123.54	83.18	5.32	16.24	2.17	195.79	32.22	6.07	18.24	8.48	124.29	69.42	6.82
10.26	1.69	77.30	39.20	3.84	12.26	1.91	77.89	63.14	4.58	14.26	3.06	134.90	83.78	5.33	16.26	1.98	162.93	31.32	6.08	18.26	8.38	117.74	70.62	6.83
10.28	1.67	82.88	38.20	3.85	12.28	1.91	79.52	63.54	4.59	14.28	2.75	141.89	90.96	5.34	16.28	1.75	141.09	30.52	6.08	18.28	8.32	111.87	71.71	6.84
10.30	1.65	86.62	38.10	3.85	12.30	1.92	76.96	63.64	4.60	14.30	2.76	125.80	91.76	5.34	16.30	1.85	111.52	34.31	6.09	18.30	8.47	99.61	75.30	6.83
10.32	1.67	88.22	38.50	3.86	12.32	1.97	74.03	64.03	4.61	14.32	2.82	123.05	93.76	5.35	16.32	1.94	104.56	40.20	6.10	18.32	8.55	91.75	75.70	6.84
10.34	1.69	89.59	39.40	3.87	12.34	2.00	71.63	64.83	4.61	14.34	2.66	129.08	65.23	5.36	16.34	1.91	96.64	40.79	6.10	18.34	8.29	84.53	77.10	6.85
10.36	1.70	91.50	39.10	3.88	12.36	2.00	72.33	65.83	4.62	14.36	2.18	128.86	59.65	5.37	16.36	2.06	84.41	41.99	6.11	18.36	8.23	85.36	77.90	6.86
10.38	1.70	92.81	39.40	3.88	12.38	2.00	69.07	65.13	4.63	14.38	2.02	125.18	62.24	5.37	16.38	2.88	82.72	52.26	6.12	18.38	8.08	79.77	77.60	6.87
10.40	1.67	93.22	38.20	3.89	12.40	1.92	70.13	62.74	4.64	14.40	2.10	111.55	68.02	5.38	16.40	2.73	53.57	39.60	6.13	18.40	7.69	73.74	73.01	6.87
10.42	1.66	91.31	38.00	3.90	12.42	1.80	74.69	62.44	4.64	14.42	2.51	104.84	82.09	5.39	16.42	3.93	72.88	53.96	6.13	18.42	6.98	76.80	64.23	6.88
10.44	1.64	91.34	38.10	3.91	12.44	1.77	72.39	62.54	4.65	14.44	2.52	98.19	82.09	5.40	16.44	4.05	75.86	53.26	6.14	18.44	6.39	75.91	59.84	6.89
10.46	1.60	91.05	37.20	3.91	12.46	1.84	70.64	66.63	4.66	14.46	2.61	95.70	85.48	5.40	16.46	4.08	79.18	50.87	6.15	18.46	5.56	80.50	54.86	6.89
10.48	1.55	92.93	37.00	3.92	12.48	1.98	65.78	69.22	4.67	14.48	2.57	95.51	86.18	5.41	16.48	4.02	78.22	46.78	6.16	18.48	4.72	95.22	50.17	6.90
10.50	1.52	90.44	38.60	3.93	12.50	2.00	61.66	67.82	4.67	14.50	2.48	87.72	85.08	5.42	16.50	3.94	81.32	44.48	6.16	18.50	4.46	107.38	50.67	6.91
10.52	1.50	86.70	36.80	3.94	12.52	1.91	62.40	66.23	4.68	14.52	2.51	87.81	85.98	5.43	16.52	4.06	91.55	41.29	6.17	18.52	4.46	139.79	57.25	6.92
10.54	1.43	85.81	36.11	3.94	12.54	1.82	60.77	64.83	4.69	14.54	2.67	91.57	89.97	5.43	16.54	4.03	98.51	38.80	6.18	18.54	5.30	168.08	71.91	6.92
10.56	1.38	81.53	36.61	3.95	12.56	1.77	62.24	65.93	4.70	14.56	2.97	92.88	93.86	5.44	16.56	4.00	109.59	35.41	6.19	18.56	6.29	166.58	79.29	6.93
10.58	1.38	77.50	38.90	3.96	12.58	1.87	61.25	69.62	4.70	14.58	3.57	102.56	101.04	5.45	16.58	4.03	119.05	35.11	6.19	18.58	6.92	159.07	83.08	6.94
10.60	1.40	74.88	40.30	3.97	12.60	2.04	59.17	71.61	4.71	14.60	4.30	107.06	107.72	5.46	16.60	3.30	113.12	25.04	6.20	18.60	7.31	157.03	84.78	6.95
10.62	1.39	70.67	40.00	3.97	12.62	2.05	58.34	71.12	4.72	14.62	6.60	119.38	115.80	5.46	16.62	4.64	128.80	42.09	6.21	18.62	7.61	137.10	86.78	6.96
10.64	1.40	70.28	41.49	3.98	12.64	2.08	59.43	71.32	4.73	14.64	6.70	128.90	121.09	5.47	16.64	4.96	121.17	42.49	6.22	18.64	7.83	107.28	86.68	6.96
10.66	1.45	68.85	42.09	3.99	12.66	2.10	64.12	71.91	4.73	14.66	7.77	132.02	125.37	5.48	16.66	5.19	117.63	41.69	6.22	18.66	7.58	77.61	80.39	6.97
10.68	1.47	66.80	41.79	4.00	12.68	2.01	65.94	69.72	4.74	14.68	8.57	137.36	128.37	5.49	16.68	5.41	118.37	41.79	6.23	18.68	6.94	66.40	71.02	6.98
10.70	1.45	65.56	41.49	4.00	12.70	1.84	59.71	66.03	4.75	14.70	9.16	131.13	131.66	5.49	16.70	6.01	135.55	45.48	6.24	18.70	6.38	68.54	67.03	6.98
10.72	1.47	65.14	41.09	4.01	12.72	1.84	56.84	68.62	4.76	14.72	9.56	87.24	92.76	5.50	16.72	6.09	149.34	45.68	6.25	18.72	5.43	95.20	58.05	6.99
10.74	1.45	65.33	41.59	4.02	12.74	2.02	56.69	76.30	4.76	14.74	9.80	66.55	89.07	5.51	16.74	6.25	161.83	50.27	6.25	18.74	4.47	132.14	52.86	7.00
10.76	1.48	68.71	43.49	4.03	12.76	1.91	56.02	74.21	4.77	14.76	9.90	61.10	88.77	5.52	16.76	7.68	149.95	53.76	6.26	18.76	4.73	139.54	63.24	7.01
10.78	1.58	65.08	49.87	4.03	12.78	1.90	53.88	75.21	4.78	14.78	10.07	64.16	91.56	5.52	16.78	7.27	138.94	51.67	6.27	18.78	5.25	146.92	68.02	7.02
10.80	1.59	63.74	48.77	4.04	12.80	1.97	54.20	79.39	4.79	14.80	10.23	64.67	97.35	5.53	16.80	6.50	120.71	41.69	6.28	18.80	5.65	157.42	71.51	7.02
10.82	1.62	64.48	48.37	4.05	12.82	2.05	55.99	79.29	4.79	14.82	10.37	71.06	99.04	5.54	16.82	5.14	106.15	29.92	6.28	18.82	5.63	166.36	70.92	7.03
10.84	1.67	64.60	49.07	4.06	12.84	2.16	57.43	81.29	4.80	14.84	10.40	85.40	88.47	5.55	16.84	3.60	94.71	19.05	6.29	18.84	5.28	178.81	65.23	7.04
10.86	1.76	63.20	49.27	4.06	12.86	2.07	57.05	78.70	4.81	14.86	9.64	97.21	84.08	5.55	16.86	2.79	91.30	15.66	6.30	18.86	5.22	192.92	65.83	7.04
10.88	1.80	64.64	49.17	4.07	12.88	1.92	54.91	77.00	4.82	14.88	9.14	92.49	77.50	5.56	16.88	2.35	86.22	15.56	6.31	18.88	5.41	196.46	68.42	7.05
10.90	1.86	69.75	49.47	4.08	12.90	1.86	57.81	77.30	4.82	14.90	8.60	80.39	74.31	5.57	16.90	2.33	77.55	36.90	6.31	18.90	5.88	208.33	75.40	7.06
10.92	1.90	74.47	50.47	4																				

FERRARA DEPARTMENT

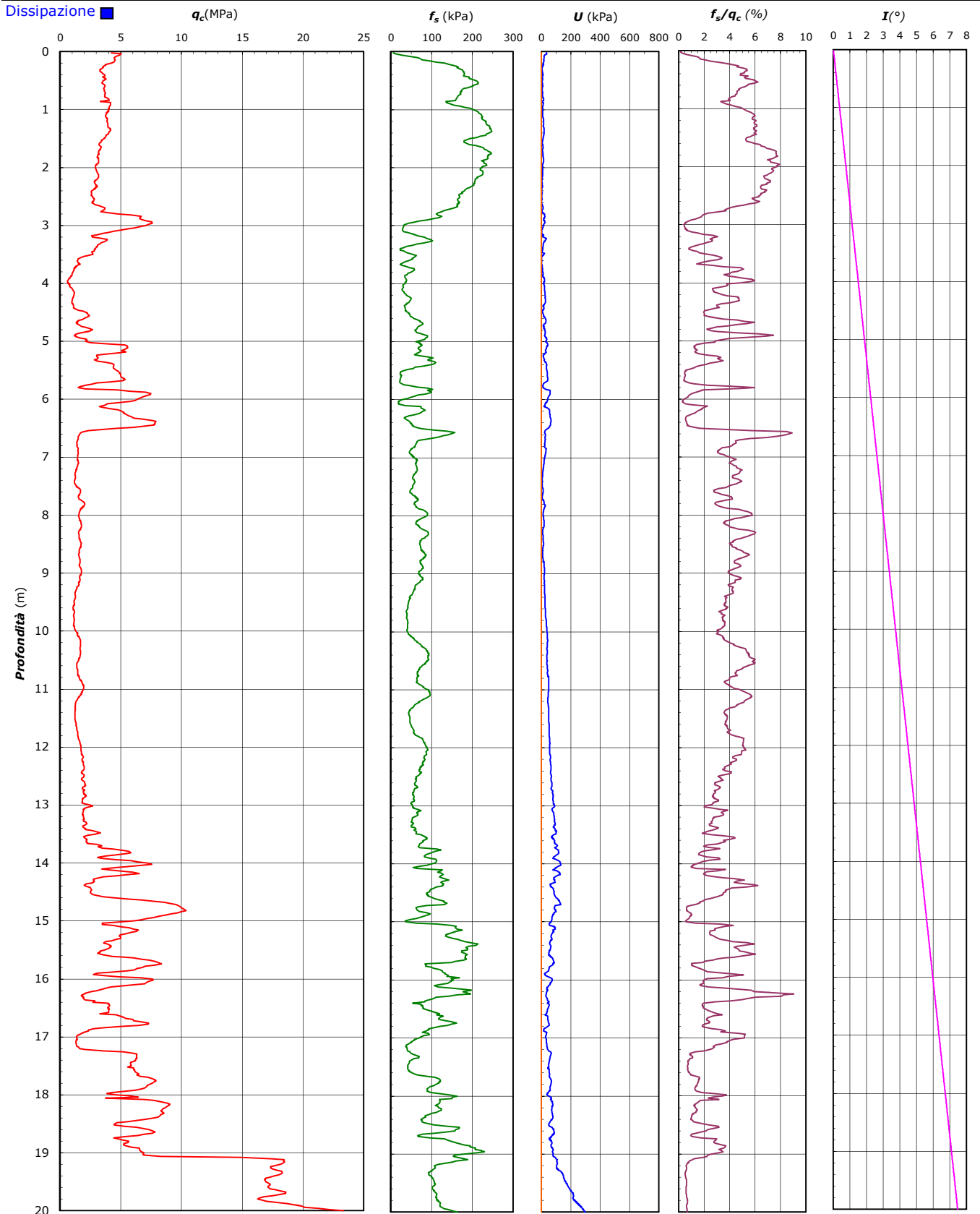
Via Annibale Zucchini, 69 – 44122 Ferrara (FE)
 Tel.: +39 0532 56771 - Fax.: +39 0532 56119

SOCOTEC ITALIA Srl – P.Iva 01872430648
 Headquarters: Via Bariola, 101-103 - 20020 Lainate (MI)
 Tel.: +39 02 9375 0000 - Fax: +39 02 9375 0099
www.socotec.it



COMMITTENTE: ENGEO S.r.l. - -Via Suor Maria Adorni, 2
CANTIERE: Str Rossetti - Pongennaro - 43019 (PR)

PROVA N°: CPTU 02 PROF. FALDA (m da p.c.): n.r. PUNTA: Tecnopenta G1-CPL2IN (matr. 121114)[a = 0.66]
 DATA: 24/10/22 PREFORO (m da p.c.): LAT. (WGS 84): 44.922915° LONG. (WGS 84): 10.138049°
 COMMESSA: 0345FE/22 C. SITO N°: SF221123 del 08.11.22 OPERATORE: L. Formisano



FERRARA DEPARTMENT

Via Annibale Zucchini, 69 – 44122 Ferrara (FE)

Tel.: +39 0532 56771 - Fax.: +39 0532 56119

SOCOTEC ITALIA Srl – P.Iva 01872430648

Headquarters: Via Bariola, 101-103 - 20020 Lainate (MI)

Tel.: +39 02 9375 0000 - Fax: +39 02 9375 0099

www.socotec.it



COMMITTENTE: ENGEO S.r.l. - -Via Suor Maria Adorni, 2

CANTIERE: Str Rossetti - Pongennaro - 43019 (PR)

PROVA N°: CPTU 02 PROF. FALDA (m da p.c.): n.r. PUNTA: Tecnopenta G1-CPL2IN (matr. 121114)[a = 0.66]

DATA: 24/10/22 PREFORO (m da p.c.): LAT. (WGS 84): 44.922915° LONG. (WGS 84): 10.138049°

COMMESSA: 0345FE/22 C. SITO N°: SF221123 del 08.11.22 OPERATORE: L. Formisano

UBICAZIONE

Località: Str Rossetti - Pongennaro - 43019 (PR)



NOTE: Utilizzato 1 anello allargatore da inizio prova

FERRARA DEPARTMENT

Via Annibale Zucchini, 69 – 44122 Ferrara (FE)

Tel.: +39 0532 56771 - Fax.: +39 0532 56119

SOCOTEC ITALIA Srl – P.Iva 01872430648

Headquarters: Via Bariola, 101-103 - 20020 Lainate (MI)

Tel.: +39 02 9375 0000 - Fax: +39 02 9375 0099

www.socotec.it



COMMITTENTE: ENGEО S.r.l. - Via Suor Maria Adorni, 2

CANTIERE: Strada Provinciale 59 - Soragna (PR)

PROVA N°: CPTU 03 PROF. FALDA (m da p.c.): 3.00

PUNTA: Tecnopenta G1-CPL2IN (matr. 121114)[a = 0.66]

DATA: 25/10/22

PREFORO (m da p.c.):

LAT. (WGS 84): 44.951296°

LONG. (WGS 84): 10.143726°

COMMESSA: 0345-22

C. SITO N°: SF221124 del 08.11.22 OPERATORE: L. Formisano

prof. m	qc Mpa	fs kPa	U kPa	incl. gradi	prof. m	qc Mpa	fs kPa	U kPa	incl. gradi	prof. m	qc Mpa	fs kPa	U kPa	incl. gradi	prof. m	qc Mpa	fs kPa	U kPa	incl. gradi	prof. m	qc Mpa	fs kPa	U kPa	incl. gradi
0.02	1.49	7.01	5.19	0.08	2.02	0.08	1.76	10.87	0.83	4.02	0.66	21.40	59.55	1.59	6.02	1.32	58.95	44.98	2.34	8.02	1.04	50.71	68.32	3.10
0.04	2.68	11.51	19.35	0.08	2.04	0.12	3.70	10.47	0.84	4.04	0.71	19.75	62.04	1.60	6.04	1.25	59.36	44.19	2.35	8.04	1.12	53.17	68.02	3.11
0.06	3.80	17.52	18.55	0.09	2.06	0.09	2.65	10.47	0.85	4.06	0.75	21.80	62.44	1.60	6.06	1.22	58.09	43.39	2.36	8.06	1.15	53.94	68.02	3.12
0.08	3.71	34.41	13.76	0.10	2.08	0.11	3.10	10.17	0.85	4.08	0.76	23.87	63.24	1.61	6.08	1.17	56.24	42.39	2.37	8.08	1.15	53.24	67.13	3.12
0.10	3.73	39.07	11.87	0.11	2.10	0.11	3.13	9.97	0.86	4.10	0.80	24.45	62.94	1.62	6.10	1.14	54.61	41.49	2.37	8.10	1.17	52.09	66.13	3.13
0.12	3.79	51.65	11.17	0.11	2.12	0.55	28.47	21.24	0.87	4.12	0.79	26.08	58.15	1.63	6.12	1.10	53.46	40.69	2.38	8.12	1.13	51.67	65.03	3.14
0.14	3.72	59.66	9.67	0.12	2.14	0.58	27.13	20.15	0.88	4.14	0.76	29.66	41.29	1.63	6.14	1.07	51.07	40.20	2.39	8.14	1.02	55.89	63.73	3.15
0.16	3.70	69.08	8.58	0.13	2.16	0.63	25.47	18.95	0.89	4.16	0.78	31.96	41.99	1.64	6.16	1.09	48.61	39.90	2.40	8.16	0.99	59.11	62.54	3.15
0.18	3.73	75.24	8.18	0.14	2.18	0.73	23.91	15.96	0.89	4.18	0.76	34.03	46.08	1.65	6.18	1.10	45.35	39.70	2.41	8.18	0.93	63.74	60.54	3.16
0.20	3.79	83.00	8.28	0.14	2.20	0.76	24.26	13.76	0.90	4.20	0.76	34.86	46.58	1.66	6.20	1.07	43.72	39.30	2.41	8.20	0.89	67.29	60.84	3.17
0.22	3.56	98.80	6.38	0.15	2.22	0.77	24.81	12.47	0.91	4.22	0.75	35.25	45.08	1.66	6.22	1.05	42.64	38.90	2.42	8.22	0.86	63.23	62.84	3.18
0.24	3.19	103.21	4.59	0.16	2.24	0.76	23.88	12.67	0.92	4.24	0.77	35.92	44.68	1.67	6.24	1.03	40.53	38.20	2.43	8.24	0.98	61.86	64.53	3.18
0.26	3.12	98.77	4.19	0.17	2.26	0.74	25.77	15.36	0.92	4.26	0.76	36.24	43.79	1.68	6.26	1.01	40.31	37.50	2.44	8.26	0.97	57.77	65.83	3.19
0.28	2.82	95.97	1.10	0.17	2.28	0.74	25.99	14.26	0.93	4.28	0.80	36.01	40.99	1.69	6.28	0.96	41.62	36.51	2.44	8.28	0.98	50.49	65.43	3.20
0.30	2.59	100.09	2.69	0.18	2.30	0.72	25.67	8.08	0.94	4.30	0.81	35.28	39.70	1.69	6.30	0.90	43.09	35.61	2.45	8.30	0.94	47.68	65.53	3.21
0.32	2.44	98.34	3.79	0.19	2.32	0.65	26.47	7.18	0.95	4.32	0.84	35.06	38.40	1.70	6.32	0.85	42.83	35.11	2.46	8.32	0.92	43.82	65.53	3.21
0.34	2.39	100.93	4.69	0.20	2.34	0.60	26.60	9.38	0.95	4.34	0.85	35.98	36.31	1.71	6.34	0.85	42.23	34.81	2.47	8.34	0.92	40.91	65.23	3.22
0.36	2.47	92.56	4.69	0.20	2.36	0.61	25.19	12.67	0.96	4.36	0.86	38.06	34.31	1.72	6.36	0.90	40.57	35.71	2.47	8.36	0.92	41.65	64.93	3.23
0.38	2.47	94.19	4.89	0.21	2.38	0.68	26.98	12.37	0.97	4.38	0.83	39.62	31.72	1.72	6.38	0.97	36.36	36.61	2.48	8.38	0.93	43.31	64.73	3.24
0.40	2.49	94.00	5.59	0.22	2.40	0.74	29.31	14.16	0.98	4.40	0.81	41.06	26.23	1.73	6.40	1.04	32.01	37.40	2.49	8.40	0.95	46.60	65.23	3.24
0.42	2.50	96.14	6.08	0.23	2.42	0.76	29.12	16.06	0.98	4.42	0.79	43.42	22.64	1.74	6.42	1.10	30.61	37.90	2.50	8.42	0.98	47.14	66.23	3.25
0.44	2.47	96.40	6.58	0.23	2.44	0.71	28.80	22.04	0.99	4.44	0.76	45.50	15.56	1.75	6.44	1.09	30.99	37.80	2.50	8.44	1.02	46.15	67.23	3.26
0.46	2.41	99.82	7.08	0.24	2.46	0.55	28.10	25.33	1.00	4.46	0.75	47.45	12.67	1.75	6.46	1.09	31.31	37.90	2.51	8.46	1.08	46.18	67.72	3.27
0.48	2.58	99.82	6.88	0.25	2.48	0.49	27.98	23.34	1.01	4.48	0.75	48.31	9.48	1.76	6.48	1.08	31.99	37.60	2.52	8.48	1.11	47.97	67.92	3.27
0.50	2.62	103.72	7.28	0.26	2.50	0.48	25.90	15.56	1.01	4.50	0.75	48.92	8.08	1.77	6.50	1.04	32.91	36.80	2.53	8.50	1.13	48.42	67.82	3.28
0.52	2.68	117.93	7.58	0.26	2.52	0.48	22.17	9.38	1.02	4.52	0.76	48.76	7.98	1.78	6.52	1.00	34.61	35.81	2.53	8.52	1.11	47.43	66.33	3.29
0.54	2.77	124.83	7.68	0.27	2.54	0.51	19.74	2.79	1.03	4.54	0.75	47.19	9.28	1.78	6.54	0.98	37.61	34.91	2.54	8.54	1.09	49.66	65.93	3.30
0.56	2.87	132.49	7.98	0.28	2.56	0.51	19.61	6.08	1.04	4.56	0.76	46.75	10.67	1.79	6.56	0.97	38.79	34.01	2.55	8.56	1.12	51.96	66.43	3.31
0.58	2.99	141.21	7.78	0.29	2.58	0.49	18.53	9.58	1.04	4.58	0.75	45.89	12.57	1.80	6.58	0.94	39.78	33.61	2.56	8.58	1.15	54.90	66.03	3.31
0.60	3.09	152.00	8.08	0.30	2.60	0.51	17.83	9.97	1.05	4.60	0.77	44.99	13.07	1.81	6.60	1.01	38.41	34.11	2.56	8.60	1.09	59.11	65.13	3.32
0.62	3.15	159.00	8.28	0.30	2.62	0.50	17.06	8.68	1.06	4.62	0.79	42.92	11.27	1.82	6.62	1.04	36.97	34.01	2.57	8.62	1.10	61.03	64.33	3.33
0.64	3.16	162.34	8.58	0.31	2.64	0.51	16.46	8.68	1.07	4.64	0.81	41.74	9.38	1.82	6.64	1.03	36.27	33.81	2.58	8.64	1.11	65.79	64.03	3.34
0.66	3.15	167.09	9.18	0.32	2.66	0.58	15.12	6.28	1.07	4.66	0.81	41.19	8.18	1.83	6.66	1.03	36.02	33.81	2.59	8.66	1.06	70.58	64.03	3.34
0.68	3.18	169.70	9.38	0.33	2.68	0.84	15.05	2.99	1.08	4.68	0.86	41.07	6.58	1.84	6.68	1.10	32.51	35.01	2.59	8.68	1.06	72.27	64.63	3.35
0.70	3.28	176.22	9.48	0.33	2.70	0.86	16.30	16.10	1.09	4.70	0.87	41.48	5.98	1.85	6.70	1.17	29.06	34.91	2.60	8.70	1.00	73.19	65.03	3.36
0.72	3.36	178.70	9.38	0.34	2.72	0.73	18.85	23.64	1.10	4.72	0.93	42.50	6.28	1.85	6.72	1.16	29.38	34.71	2.61	8.72	1.02	71.56	64.83	3.37
0.74	3.56	178.10	9.67	0.35	2.74	0.62	22.88	21.05	1.10	4.74	0.93	45.09	5.88	1.86	6.74	1.13	30.91	33.91	2.62	8.74	1.01	67.96	64.23	3.37
0.76	3.65	178.98	9.48	0.36	2.76	0.61	22.69	3.39	1.11	4.76	0.93	46.18	4.49	1.87	6.76	1.05	36.92	33.61	2.62	8.76	1.00	63.77	63.64	3.38
0.78	3.74	170.83	9.28	0.36	2.78	0.61	21.60	15.96	1.12	4.78	0.93	46.75	3.29	1.88	6.78	1.02	42.50	34.21	2.63	8.78	1.02	58.50	63.44	3.39
0.80	3.78	162.40	9.18	0.37	2.80	0.63	21.86	12.37	1.13	4.80	0.95	46.40	3.49	1.88	6.80	0.96	46.30	34.51	2.64	8.80	0.99	58.44	63.04	3.40
0.82	3.74	154.59	9.28	0.38	2.82	0.64	23.11	9.18	1.13	4.82	0.97	46.53	6.98	1.89	6.82	0.87	48.41	35.81	2.65	8.82	1.00	57.80	62.64	3.40
0.85	3.74	144.53	9.58	0.39	2.84	0.62	24.16	5.88	1.14	4.84	1.02	47.23	11.07	1.90	6.84	0.81	47.74	35.11	2.65	8.84	0.99	61.37	62.24	3.41
0.86	3.75	139.71	9.58	0.39	2.86	0.60	25.02	2.29	1.15	4.86	1.02	48.54	10.77	1.91	6.86	0.78	43.98	36.61	2.66	8.86	0.97	62.78	62.04	3.42
0.89	3.74	133.77	9.67	0.40	2.88	0.59	25.31	1.40	1.16	4.88	1.01	49.76	7.78	1.91	6.88	0.83	39.95	38.50	2.67	8.88	1.00	62.55	62.14	3.43
0.90	3.70	123.81	9.97	0.41	2.90	0.57	26.40	4.39	1.16	4.90	1.04	50.17	7.38	1.92	6.90	0.82	35.20	41.99	2.68	8.90	1.00	63.10	62.14	3.43
0.92	3.61	114.00	10.07	0.42	2.92	0.56	28.16	5.79	1.17	4.92	1.06	51.04	6.88	1.93	6.92	0.84	32.96	44.38	2.68	8.92	0.98	65.65	62.24	3.44
0.94																								

FERRARA DEPARTMENT

Via Annibale Zucchini, 69 – 44122 Ferrara (FE)

Tel.: +39 0532 56771 - Fax.: +39 0532 56119

SOCOTEC ITALIA Srl – P.Iva 01872430648

Headquarters: Via Bariola, 101-103 - 20020 Lainate (MI)

Tel.: +39 02 9375 0000 - Fax: +39 02 9375 0099

www.socotec.it



COMMITTENTE: ENGEО S.r.l. - -Via Suor Maria Adorni, 2

CANTIERE: Strada Provinciale 59 - Soragna (PR)

PROVA N°: CPTU 03 PROF. FALDA (m da p.c.): 3.00

PUNTA: Tecnopenta G1-CPL2IN (matr. 121114)[a = 0.66]

DATA: 25/10/22

PREFORO (m da p.c.):

LAT. (WGS 84): 44.951296°

LONG. (WGS 84): 10.143726°

COMMESSA: 0345-22

C. SITO N°: SF221124 del 08.11.22 OPERATORE: L. Formisano

prof. m	qc Mpa	fs kPa	U kPa	incl. gradi	prof. m	qc Mpa	fs kPa	U kPa	incl. gradi	prof. m	qc Mpa	fs kPa	U kPa	incl. gradi	prof. m	qc Mpa	fs kPa	U kPa	incl. gradi	prof. m	qc Mpa	fs kPa	U kPa	incl. gradi
10.02	1.45	108.32	82.98	3.86	12.02	1.87	107.42	75.01	4.61	14.02	1.99	95.70	113.51	5.37	16.02	16.32	91.77	53.86	6.13	18.02	16.32	91.77	53.86	6.13
10.04	1.42	106.63	82.19	3.86	12.04	1.87	109.11	74.61	4.62	14.04	1.96	86.47	115.00	5.38	16.04	16.28	91.13	52.66	6.13	18.04	16.28	91.13	52.66	6.13
10.06	1.40	104.52	81.69	3.87	12.06	1.88	111.16	79.29	4.63	14.06	2.02	82.45	117.50	5.38	16.06	15.89	90.14	50.37	6.14	18.06	15.89	90.14	50.37	6.14
10.08	1.36	105.13	81.29	3.88	12.08	1.93	111.73	78.80	4.64	14.08	2.32	84.21	125.77	5.39	16.08	15.24	89.97	46.98	6.15	18.08	15.24	89.97	46.98	6.15
10.10	1.34	106.76	81.69	3.89	12.10	1.94	113.11	78.30	4.64	14.10	2.88	84.24	135.25	5.40	16.10	14.94	89.94	45.98	6.16	18.10	14.94	89.94	45.98	6.16
10.12	1.31	105.99	81.69	3.89	12.12	1.92	119.40	77.40	4.65	14.12	4.14	96.56	152.50	5.41	16.12	14.72	89.68	45.18	6.16	18.12	14.72	89.68	45.18	6.16
10.14	1.32	102.83	81.79	3.90	12.14	1.90	123.67	76.60	4.66	14.14	5.18	109.69	165.67	5.41	16.14	14.71	87.80	46.58	6.17	18.14	14.71	87.80	46.58	6.17
10.16	1.33	101.65	82.19	3.91	12.16	1.88	128.49	77.60	4.67	14.16	5.62	105.98	171.46	5.42	16.16	14.88	86.20	48.97	6.18	18.16	14.88	86.20	48.97	6.18
10.18	1.32	101.61	82.39	3.92	12.18	1.86	129.45	79.49	4.67	14.18	6.01	105.79	177.54	5.43	16.18	15.08	84.60	51.77	6.19	18.18	15.08	84.60	51.77	6.19
10.20	1.34	100.78	82.79	3.93	12.20	1.86	131.97	78.50	4.68	14.20	6.88	112.05	194.60	5.44	16.20	15.08	82.20	52.66	6.19	18.20	15.08	82.20	52.66	6.19
10.22	1.37	97.97	83.48	3.93	12.22	1.86	136.44	81.89	4.69	14.22	8.04	110.10	217.84	5.45	16.22	15.04	79.17	52.86	6.20	18.22	15.04	79.17	52.86	6.20
10.24	1.37	96.73	83.18	3.94	12.24	1.93	133.86	83.18	4.70	14.24	9.15	116.87	210.85	5.45	16.24	15.13	78.02	54.46	6.21	18.24	15.13	78.02	54.46	6.21
10.26	1.33	98.64	82.49	3.95	12.26	2.03	132.99	85.18	4.70	14.26	9.56	115.37	176.54	5.46	16.26	15.11	77.86	55.46	6.22	18.26	15.11	77.86	55.46	6.22
10.28	1.33	101.29	81.79	3.96	12.28	2.14	128.30	86.68	4.71	14.28	9.59	121.40	128.17	5.47	16.28	14.94	78.84	54.96	6.22	18.28	14.94	78.84	54.96	6.22
10.30	1.34	103.65	81.99	3.96	12.30	2.13	129.38	86.08	4.72	14.30	9.59	121.95	120.99	5.48	16.30	14.93	80.47	56.95	6.23	18.30	14.93	80.47	56.95	6.23
10.32	1.39	104.96	82.79	3.97	12.32	2.14	127.59	85.98	4.73	14.32	9.72	122.74	121.29	5.48	16.32	15.06	81.30	59.84	6.24	18.32	15.06	81.30	59.84	6.24
10.34	1.40	104.93	83.38	3.98	12.34	2.15	125.80	85.28	4.73	14.34	10.08	114.12	121.98	5.49	16.34	15.18	81.08	62.24	6.25	18.34	15.18	81.08	62.24	6.25
10.36	1.41	105.82	84.98	3.99	12.36	2.14	125.83	85.28	4.74	14.36	10.64	108.47	112.21	5.50	16.36	15.45	80.60	65.33	6.25	18.36	15.45	80.60	65.33	6.25
10.38	1.42	107.16	88.27	3.99	12.38	2.18	127.08	84.98	4.75	14.38	11.12	110.41	107.72	5.51	16.38	15.57	81.23	66.73	6.26	18.38	15.57	81.23	66.73	6.26
10.40	1.44	107.99	87.67	4.00	12.40	2.14	132.50	83.98	4.76	14.40	11.55	115.93	101.04	5.51	16.40	15.69	83.15	69.02	6.27	18.40	15.69	83.15	69.02	6.27
10.42	1.47	106.24	87.27	4.01	12.42	2.07	138.60	83.08	4.76	14.42	11.87	127.23	96.35	5.52	16.42	15.49	83.31	67.62	6.28	18.42	15.49	83.31	67.62	6.28
10.44	1.52	102.76	87.17	4.02	12.44	2.05	141.69	82.69	4.77	14.44	11.88	127.28	131.76	5.53	16.44	15.00	82.73	63.04	6.28	18.44	15.00	82.73	63.04	6.28
10.46	1.51	99.95	86.58	4.02	12.46	2.03	144.06	82.19	4.78	14.46	12.42	130.41	127.17	5.54	16.46	14.85	82.86	61.64	6.29	18.46	14.85	82.86	61.64	6.29
10.48	1.55	98.22	86.48	4.03	12.48	1.95	143.29	81.59	4.79	14.48	13.14	128.43	120.69	5.54	16.48	14.74	82.61	59.75	6.30	18.48	14.74	82.61	59.75	6.30
10.50	1.56	97.04	86.68	4.04	12.50	1.95	140.03	80.79	4.79	14.50	13.60	126.00	108.12	5.55	16.50	14.57	82.64	57.45	6.31	18.50	14.57	82.64	57.45	6.31
10.52	1.59	92.34	86.38	4.05	12.52	1.92	139.71	80.49	4.80	14.52	13.87	119.35	104.33	5.56	16.52	14.31	80.37	54.76	6.31	18.52	14.31	80.37	54.76	6.31
10.54	1.53	95.09	85.58	4.05	12.54	1.93	138.30	80.49	4.81	14.54	13.93	117.34	104.13	5.57	16.54	14.05	77.81	52.16	6.32	18.54	14.05	77.81	52.16	6.32
10.56	1.51	95.34	84.38	4.06	12.56	1.88	139.71	80.39	4.82	14.56	13.78	112.77	104.93	5.57	16.56	13.72	75.67	49.77	6.33	18.56	13.72	75.67	49.77	6.33
10.58	1.49	97.26	83.98	4.07	12.58	1.84	138.78	80.39	4.83	14.58	13.53	108.65	105.43	5.58	16.58	13.54	72.16	48.37	6.34	18.58	13.54	72.16	48.37	6.34
10.60	1.45	98.21	83.88	4.08	12.60	1.81	137.18	80.09	4.83	14.60	13.13	99.90	104.33	5.59	16.60	13.40	70.37	47.08	6.35	18.60	13.40	70.37	47.08	6.35
10.62	1.45	100.29	83.98	4.08	12.62	1.81	134.91	79.59	4.84	14.62	12.75	93.93	104.73	5.60	16.62	13.23	69.48	45.88	6.35	18.62	13.23	69.48	45.88	6.35
10.64	1.45	99.24	83.68	4.09	12.64	1.79	135.87	79.39	4.85	14.64	12.30	90.35	105.13	5.60	16.64	13.06	68.52	44.19	6.36	18.64	13.06	68.52	44.19	6.36
10.66	1.46	96.78	83.48	4.10	12.66	1.80	133.35	79.79	4.86	14.66	11.85	90.12	108.02	5.61	16.66	12.87	67.53	42.79	6.37	18.66	12.87	67.53	42.79	6.37
10.68	1.47	98.18	83.18	4.11	12.68	1.80	131.30	79.79	4.86	14.68	11.64	88.68	111.31	5.62	16.68	12.88	66.12	42.69	6.38	18.68	12.88	66.12	42.69	6.38
10.70	1.45	103.48	83.68	4.11	12.70	1.79	127.44	79.59	4.87	14.70	11.57	86.51	115.10	5.63	16.70	12.89	66.41	42.29	6.38	18.70	12.89	66.41	42.29	6.38
10.72	1.52	103.32	84.78	4.12	12.72	1.84	125.08	79.59	4.88	14.72	11.57	84.65	119.59	5.63	16.72	13.23	66.41	44.68	6.39	18.72	13.23	66.41	44.68	6.39
10.74	1.34	104.53	83.08	4.13	12.74	1.86	123.45	79.69	4.89	14.74	11.67	85.51	125.08	5.64	16.74	13.63	67.24	46.68	6.40	18.74	13.63	67.24	46.68	6.40
10.76	1.30	102.58	83.18	4.14	12.76	1.88	118.11	79.79	4.89	14.76	11.91	85.63	130.96	5.65	16.76	14.12	69.16	50.17	6.41	18.76	14.12	69.16	50.17	6.41
10.78	1.30	101.75	84.18	4.14	12.78	1.92	115.59	80.49	4.90	14.78	12.40	87.39	139.24	5.66	16.78	14.69	69.80	52.76	6.41	18.78	14.69	69.80	52.76	6.41
10.80	1.34	100.13	85.38	4.15	12.80	1.95	115.11	80.59	4.91	14.80	12.62	91.37	140.64	5.66	16.80	15.41	72.48	56.85	6.42	18.80	15.41	72.48	56.85	6.42
10.82	1.37	95.08	86.18	4.16	12.82	1.96	115.94	80.99	4.92	14.82	12.81	94.88	132.36	5.67	16.82	15.88	72.24	59.25	6.43	18.82	15.88	72.24	59.25	6.43
10.84	1.42	87.54	86.38	4.17	12.84	1.94	118.91	80.89	4.92	14.84	12.92	95.36	131.66	5.68	16.84	16.73	82.51	63.34	6.44	18.84	16.73	82.51	63.34	6.44
10.86	1.39	87.13	85.98	4.17	12.86	1.92	120.03	80.59	4.93	14.86	13.11	96.28	133.95	5.69	16.86	17.42	88.61	66.63	6.44	18.86	17.42	88.61	66.63	6.44
10.88	1.38	84.67	85.88	4.18	12.88	1.90	119.42	80.09	4.94	14.88	13.25	100.53	135.15	5.69	16.88	18.78	94.74	68.32	6.45	18.88				

FERRARA DEPARTMENT

Via Annibale Zucchini, 69 – 44122 Ferrara (FE)

Tel.: +39 0532 56771 - Fax.: +39 0532 56119

SOCOTEC ITALIA Srl – P.Iva 01872430648

Headquarters: Via Bariola, 101-103 - 20020 Lainate (MI)

Tel.: +39 02 9375 0000 - Fax: +39 02 9375 0099

www.socotec.it



COMMITTENTE: ENGEО S.r.l. - -Via Suor Maria Adorni, 2

CANTIERE: Strada Provinciale 59 - Soragna (PR)

PROVA N°: CPTU 03 PROF. FALDA (m da p.c.): 3.00

DATA: 25/10/22

PREFORO (m da p.c.):

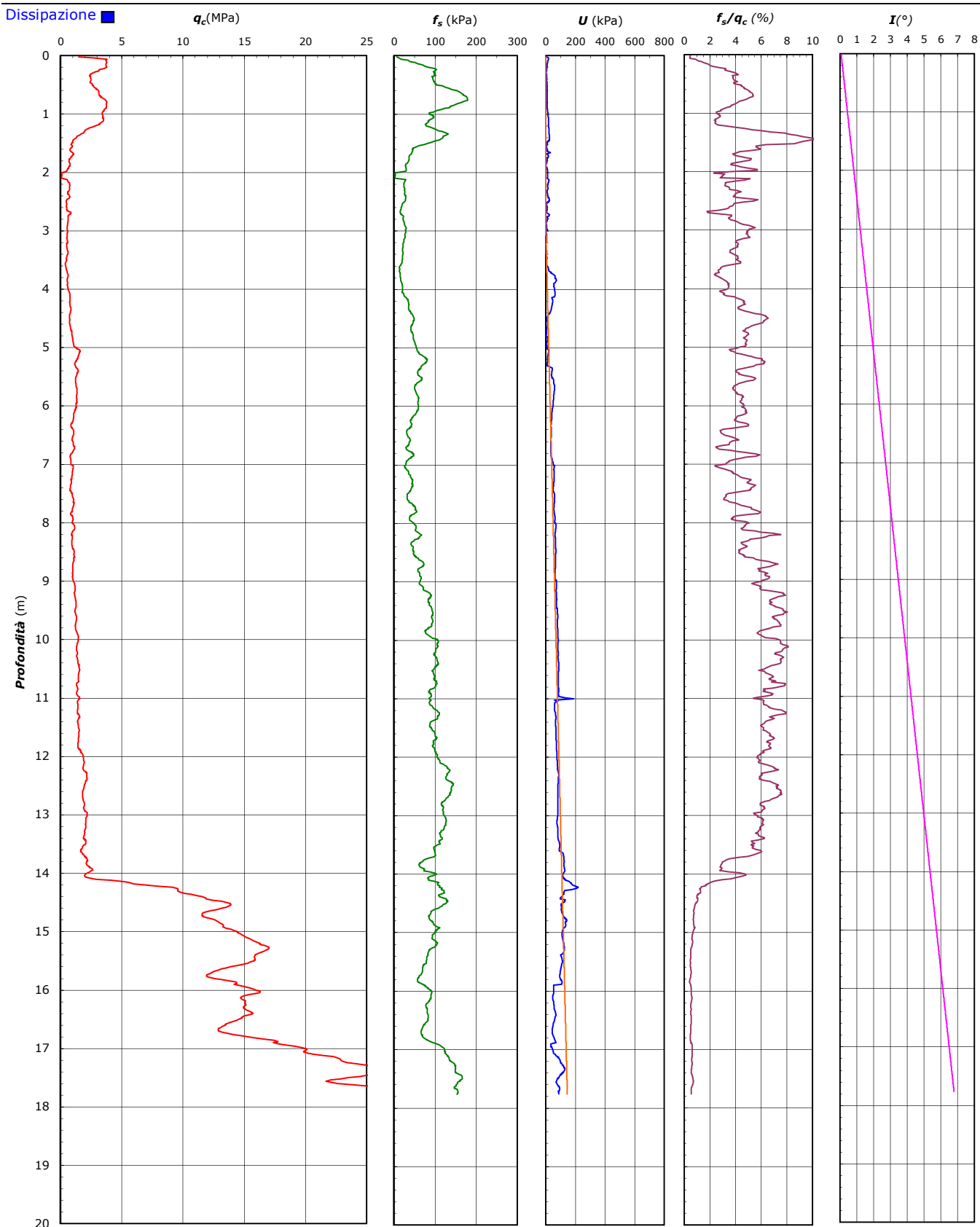
PUNTA: Tecnopenta G1-CPL2IN (matr. 121114)[a = 0.66]

LAT. (WGS 84): 44.951296°

LONG. (WGS 84): 10.143726°

COMMESSA: 0345-22

C. SITO N°: SF221124 del 08.11.22 OPERATORE: L. Formisano



FERRARA DEPARTMENT

Via Annibale Zucchini, 69 – 44122 Ferrara (FE)

Tel.: +39 0532 56771 - Fax.: +39 0532 56119

SOCOTEC ITALIA Srl – P.Iva 01872430648

Headquarters: Via Bariola, 101-103 - 20020 Lainate (MI)

Tel.: +39 02 9375 0000 - Fax: +39 02 9375 0099

www.socotec.it



COMMITTENTE: ENGEO S.r.l. - -Via Suor Maria Adorni, 2

CANTIERE: Strada Provinciale 59 - Soragna (PR)

PROVA N°: CPTU 03	PROF. FALDA (m da p.c.): 3.00	PUNTA: Tecnopenta G1-CPL2IN (matr. 121114)[a = 0.66]
DATA: 25/10/22	PREFORO (m da p.c.):	LAT. (WGS 84): 44.951296° LONG. (WGS 84): 10.143726°
COMMESSA: 0345-22	C. SITO N°: SF221124 del 08.11.22	OPERATORE: L. Formisano

UBICAZIONE

Località: Strada Provinciale 59 - Soragna (PR)



NOTE: Utilizzato 1 anello allargatore da inizio prova

FERRARA DEPARTMENT

Via Annibale Zucchini, 69 – 44122 Ferrara (FE)

Tel.: +39 0532 56771 - Fax.: +39 0532 56119

SOCOTEC ITALIA Srl – P.Iva 01872430648

Headquarters: Via Bariola, 101-103 - 20020 Lainate (MI)

Tel.: +39 02 9375 0000 - Fax: +39 02 9375 0099

www.socotec.it



COMMITTENTE: ENGE0 S.r.l. - Via Suor Maria Adorni, 2
CANTIERE: SP 12 - Qre Artigianale di Soragna 43019 (PR)

PROVA N°: CPTU 04 PROF. FALDA (m da p.c.): n.r. PUNTA: Tecnopenta G1-CPL2IN (matr. 121114)[a = 0.66]
 DATA: 26/10/22 PREFORO (m da p.c.): LAT. (WGS 84): 44.922582° LONG. (WGS 84): 10.114498°
 COMMESSA: 0345FE/22 C. SITO N°: SF221125 del 08.11.22 OPERATORE: L. Formisano

prof. m	qc Mpa	fs kPa	U kPa	incl. gradi	prof. m	qc Mpa	fs kPa	U kPa	incl. gradi	prof. m	qc Mpa	fs kPa	U kPa	incl. gradi	prof. m	qc Mpa	fs kPa	U kPa	incl. gradi	prof. m	qc Mpa	fs kPa	U kPa	incl. gradi
0.02	1.58	14.30	18.35	0.06	2.02	1.90	164.27	21.94	1.00	4.02	1.24	79.32	69.62	1.93	6.02	2.48	145.18	62.44	2.87	8.02	1.98	123.06	469.68	3.80
0.04	1.60	17.08	18.95	0.07	2.04	1.85	168.04	22.14	1.01	4.04	1.24	74.79	40.69	1.94	6.04	2.50	144.15	58.95	2.88	8.04	1.93	120.19	395.08	3.81
0.06	1.57	22.38	19.75	0.08	2.06	1.83	169.33	22.44	1.02	4.06	1.32	72.84	70.42	1.95	6.06	2.50	143.20	59.94	2.89	8.06	1.91	115.59	380.21	3.82
0.08	1.57	23.25	20.85	0.09	2.08	1.83	168.86	22.74	1.03	4.08	1.35	75.56	61.84	1.96	6.08	2.55	144.06	59.55	2.90	8.08	1.90	113.00	352.79	3.83
0.10	1.57	26.41	20.95	0.10	2.10	1.83	168.70	23.04	1.04	4.10	1.37	77.22	63.73	1.97	6.10	2.54	144.95	58.25	2.91	8.10	1.91	109.87	328.75	3.84
0.12	1.64	29.54	20.35	0.11	2.12	1.87	166.72	23.14	1.05	4.12	1.36	73.49	61.84	1.98	6.12	2.50	149.26	41.89	2.91	8.12	1.96	109.30	351.99	3.85
0.14	1.53	37.20	20.65	0.12	2.14	1.83	167.44	23.54	1.06	4.14	1.36	75.08	61.34	1.99	6.14	2.50	150.95	38.40	2.92	8.14	2.00	109.87	287.95	3.86
0.16	1.39	35.10	21.84	0.13	2.16	1.83	164.39	23.64	1.06	4.16	1.39	75.02	60.64	2.00	6.16	2.49	155.39	36.51	2.93	8.16	2.01	115.78	232.40	3.87
0.18	1.31	35.29	22.14	0.14	2.18	1.86	165.08	23.74	1.07	4.18	1.42	78.66	59.35	2.01	6.18	2.48	158.52	35.31	2.94	8.18	2.01	118.30	194.79	3.88
0.20	1.54	31.86	23.14	0.15	2.20	1.86	164.89	23.74	1.08	4.20	1.40	79.11	57.75	2.02	6.20	2.45	164.24	46.88	2.95	8.20	2.06	118.18	191.50	3.89
0.22	1.56	34.48	24.14	0.16	2.22	1.93	161.64	23.34	1.09	4.22	1.43	78.73	55.66	2.03	6.22	2.33	170.22	434.87	2.96	8.22	2.09	117.19	185.22	3.90
0.24	1.57	33.88	24.84	0.17	2.24	2.01	160.29	22.64	1.10	4.24	1.43	82.53	54.36	2.04	6.24	2.30	166.41	320.27	2.97	8.24	2.07	119.87	178.64	3.90
0.26	1.57	30.27	25.23	0.18	2.26	2.06	162.02	22.24	1.11	4.26	1.43	87.19	53.66	2.05	6.26	2.29	157.44	321.77	2.98	8.26	2.07	112.87	178.34	3.91
0.28	1.51	26.35	25.43	0.19	2.28	2.07	164.88	22.24	1.12	4.28	1.44	88.15	53.06	2.05	6.28	2.28	150.21	277.08	2.99	8.28	1.96	128.52	486.74	3.92
0.30	1.78	24.50	24.24	0.20	2.30	2.09	165.95	22.24	1.13	4.30	1.46	90.45	52.36	2.06	6.30	2.48	152.26	222.22	3.00	8.30	1.95	126.86	439.56	3.93
0.32	1.96	22.77	23.94	0.20	2.32	2.12	166.23	22.24	1.14	4.32	1.46	92.82	51.77	2.07	6.32	2.51	146.03	194.99	3.01	8.32	1.93	123.58	442.35	3.94
0.34	2.06	26.86	24.54	0.21	2.34	2.15	168.43	22.24	1.15	4.34	1.45	90.55	57.65	2.08	6.34	2.61	137.12	167.77	3.02	8.34	1.92	125.19	375.33	3.95
0.36	2.22	34.46	24.24	0.22	2.36	2.18	171.36	22.14	1.16	4.36	1.48	97.19	69.42	2.09	6.36	2.61	136.39	183.13	3.03	8.36	1.94	120.15	275.59	3.96
0.38	2.28	40.47	24.44	0.23	2.38	2.20	172.55	22.24	1.17	4.38	1.54	97.38	69.62	2.10	6.38	2.68	139.20	206.66	3.04	8.38	1.96	115.62	225.12	3.97
0.40	2.23	41.81	25.04	0.24	2.40	2.21	173.53	22.44	1.18	4.40	1.59	97.64	68.32	2.11	6.40	2.70	146.92	208.76	3.05	8.40	1.98	111.28	151.11	3.98
0.42	2.35	48.97	24.64	0.25	2.42	2.20	172.36	22.64	1.19	4.42	1.58	98.89	67.13	2.12	6.42	2.71	154.77	47.38	3.05	8.42	1.99	109.17	146.72	3.99
0.44	2.55	56.18	23.84	0.26	2.44	2.22	173.68	22.74	1.20	4.44	1.59	101.00	66.23	2.13	6.44	2.59	166.34	51.77	3.06	8.44	2.00	111.82	122.58	4.00
0.46	2.46	62.74	23.84	0.27	2.46	2.23	175.29	22.64	1.20	4.46	1.59	102.66	65.03	2.14	6.46	2.53	172.45	50.47	3.07	8.46	2.00	118.46	98.84	4.01
0.48	2.79	71.55	22.64	0.28	2.48	2.28	176.89	22.54	1.21	4.48	1.58	104.60	64.63	2.15	6.48	2.46	176.76	34.31	3.08	8.48	2.03	126.76	65.63	4.02
0.50	2.80	83.08	22.84	0.29	2.50	2.32	177.24	22.54	1.22	4.50	1.56	109.30	65.83	2.16	6.50	2.44	177.54	29.92	3.09	8.50	2.06	132.54	66.63	4.03
0.52	2.55	99.01	24.14	0.30	2.52	2.37	177.83	22.04	1.23	4.52	1.59	109.91	64.53	2.17	6.52	2.42	177.51	18.45	3.10	8.52	1.95	139.34	39.90	4.04
0.54	2.64	107.06	23.54	0.31	2.54	2.43	177.11	21.24	1.24	4.54	1.65	110.48	64.43	2.18	6.54	2.41	176.35	17.65	3.11	8.54	1.93	142.03	28.23	4.04
0.56	2.88	106.62	22.44	0.32	2.56	2.51	175.57	20.65	1.25	4.56	1.70	117.19	63.83	2.19	6.56	2.42	173.51	17.55	3.12	8.56	1.91	138.45	26.93	4.05
0.58	3.04	119.55	20.75	0.33	2.58	2.54	175.35	18.85	1.26	4.58	1.64	118.88	47.68	2.19	6.58	2.39	172.19	19.85	3.13	8.58	1.91	133.50	17.65	4.06
0.60	3.04	134.30	20.65	0.34	2.60	2.59	174.15	17.75	1.27	4.60	1.57	119.77	48.47	2.20	6.60	2.38	172.41	20.05	3.14	8.60	1.94	130.50	21.24	4.07
0.62	2.97	145.54	20.95	0.34	2.62	2.60	173.52	17.85	1.28	4.62	1.56	117.41	54.46	2.21	6.62	2.37	173.70	19.15	3.15	8.62	1.90	135.35	23.94	4.08
0.64	2.85	151.06	21.64	0.35	2.64	2.58	170.97	18.15	1.29	4.64	1.55	115.62	55.95	2.22	6.64	2.39	168.98	18.15	3.16	8.64	1.90	130.80	28.53	4.09
0.66	2.87	148.77	21.74	0.36	2.66	2.50	167.38	18.85	1.30	4.66	1.55	116.71	56.35	2.23	6.66	2.41	165.80	21.64	3.17	8.66	1.84	132.54	18.85	4.10
0.68	3.05	151.38	20.85	0.37	2.68	2.41	162.91	20.35	1.31	4.68	1.56	118.15	57.05	2.24	6.68	2.39	166.68	22.14	3.18	8.68	1.87	128.81	19.95	4.11
0.70	3.41	144.58	19.35	0.38	2.70	2.33	157.75	23.24	1.32	4.70	1.55	118.46	57.05	2.25	6.70	2.40	167.31	22.04	3.19	8.70	1.90	127.50	21.05	4.12
0.72	3.32	145.32	19.75	0.39	2.72	2.29	154.36	24.04	1.33	4.72	1.53	115.18	56.85	2.26	6.72	2.41	167.88	22.84	3.19	8.72	1.92	127.91	21.44	4.13
0.74	3.12	154.19	20.15	0.40	2.74	2.24	147.69	24.64	1.34	4.74	1.54	112.85	56.85	2.27	6.74	2.44	167.21	23.54	3.20	8.74	1.90	130.12	21.94	4.14
0.76	3.04	149.79	21.05	0.41	2.76	2.20	143.32	25.04	1.34	4.76	1.56	112.78	56.25	2.28	6.76	2.40	164.79	23.94	3.21	8.76	1.91	130.24	22.14	4.15
0.78	2.89	160.19	21.64	0.42	2.78	2.19	141.34	25.13	1.35	4.78	1.55	110.23	55.56	2.29	6.78	2.39	162.24	26.63	3.22	8.78	1.93	129.67	22.34	4.16
0.80	2.99	167.27	21.15	0.43	2.80	2.16	139.68	25.23	1.36	4.80	1.56	107.64	54.96	2.30	6.80	2.32	159.75	28.13	3.23	8.80	1.90	129.83	22.94	4.17
0.82	2.50	126.32	24.14	0.44	2.82	2.15	139.70	19.65	1.37	4.82	1.58	106.24	58.05	2.31	6.82	2.38	148.70	33.41	3.24	8.82	1.92	129.22	23.44	4.18
0.84	3.13	143.90	17.75	0.45	2.84	2.12	138.33	22.84	1.38	4.84	1.61	106.32	48.57	2.32	6.84	2.20	152.27	32.22	3.25	8.84	1.95	128.65	24.04	4.19
0.86	3.15	141.48	18.05	0.46	2.86	2.08	138.97	24.04	1.39	4.86	1.61	106.80	48.27	2.33	6.86	1.88	122.71	30.42	3.26	8.86	1.98	128.71	24.64	4.19
0.88	3.24	149.04	17.95	0.47	2.88	2.03	139.04	25.33	1.40	4.88	1.60	108.08	49.37	2.34	6.88	2.16	147.67	38.30	3.27	8.88	1.94	135.93	24.84	4.20
0.90	3.06	150.74	19.05	0.48	2.90	2.00	138.72	25.73	1.41	4.90	1.59	110.51	71.91	2.34	6.90	2.15	145.37	37.80	3.28	8.90	1.86	139.31	24.44	4.21
0.92	3.11	149.27	18.95	0.49	2.92	1.98	138.94	26.23	1.42	4.92	1.62	112.01	75.30	2.35	6.92	2.17	143.71	37.60	3.29	8.92	1.79	139.67	23.94	4.22
0.9																								

FERRARA DEPARTMENT

Via Annibale Zucchini, 69 – 44122 Ferrara (FE)

Tel.: +39 0532 56771 - Fax.: +39 0532 56119

SOCOTEC ITALIA Srl – P.Iva 01872430648

Headquarters: Via Bariola, 101-103 - 20020 Lainate (MI)

Tel.: +39 02 9375 0000 - Fax: +39 02 9375 0099

www.socotec.it



COMMITTENTE: ENGE0 S.r.l. - Via Suor Maria Adorni, 2
CANTIERE: SP 12 - Qre Artigianale di Soragna 43019 (PR)

PROVA N°: CPTU 04 PROF. FALDA (m da p.c.): n.r. PUNTA: Tecnopenta G1-CPL2IN (matr. 121114)[a = 0.66]
 DATA: 26/10/22 PREFORO (m da p.c.): LAT. (WGS 84): 44.922582° LONG. (WGS 84): 10.114498°
 COMMESSA: 0345FE/22 C. SITO N°: SF221125 del 08.11.22 OPERATORE: L. Formisano

prof. m	qc Mpa	fs kPa	U kPa	incl. gradi	prof. m	qc Mpa	fs kPa	U kPa	incl. gradi	prof. m	qc Mpa	fs kPa	U kPa	incl. gradi	prof. m	qc Mpa	fs kPa	U kPa	incl. gradi	prof. m	qc Mpa	fs kPa	U kPa	incl. gradi
10.02	2.32	133.70	82.09	4.74	12.02	1.80	114.90	79.19	5.67	14.02	1.25	36.04	347.30	6.60	16.02	1.64	92.62	103.83	7.54	18.02	15.25	104.07	172.15	8.47
10.04	2.33	134.50	81.09	4.75	12.04	1.73	115.63	78.50	5.68	14.04	1.28	34.70	347.60	6.61	16.04	1.51	86.08	101.64	7.55	18.04	15.67	119.82	142.83	8.48
10.06	2.34	136.35	80.29	4.76	12.06	1.77	110.64	75.11	5.69	14.06	1.34	32.85	349.79	6.62	16.06	1.47	79.28	100.94	7.56	18.06	15.85	122.38	135.95	8.49
10.08	2.30	147.22	82.89	4.76	12.08	1.72	109.27	74.21	5.70	14.08	1.33	35.08	349.59	6.63	16.08	1.41	75.99	104.73	7.57	18.08	15.93	124.96	132.06	8.50
10.10	2.25	152.45	82.39	4.77	12.10	1.69	105.51	73.11	5.71	14.10	1.32	37.96	348.00	6.64	16.10	1.39	72.41	106.92	7.58	18.10	16.18	131.06	133.95	8.51
10.12	2.28	151.30	82.49	4.78	12.12	1.68	103.53	72.61	5.72	14.12	1.31	39.33	343.61	6.65	16.12	1.49	61.50	115.70	7.59	18.12	16.50	131.89	136.05	8.52
10.14	2.30	147.92	82.49	4.79	12.14	1.69	100.30	72.11	5.73	14.14	1.27	41.28	339.62	6.66	16.14	1.75	56.29	118.59	7.60	18.14	17.15	135.98	142.73	8.53
10.16	2.29	146.10	81.79	4.80	12.16	1.68	98.64	71.41	5.74	14.16	1.25	44.79	336.93	6.67	16.16	2.27	54.86	125.37	7.60	18.16	18.20	134.42	152.80	8.54
10.18	2.30	140.83	81.89	4.81	12.18	1.67	99.25	71.22	5.75	14.18	1.21	48.59	334.03	6.68	16.18	2.90	54.57	131.06	7.61	18.18	18.83	127.42	154.40	8.55
10.20	2.31	136.87	81.69	4.82	12.20	1.65	96.60	70.72	5.75	14.20	1.20	49.81	336.23	6.69	16.20	2.99	62.26	130.36	7.62	18.20	19.31	122.09	157.79	8.56
10.22	2.29	136.14	81.39	4.83	12.22	1.62	95.32	70.02	5.76	14.22	1.18	49.11	337.23	6.70	16.22	3.04	78.87	128.57	7.63	18.22	19.79	119.79	160.78	8.57
10.24	2.29	139.30	81.19	4.84	12.24	1.60	94.56	69.52	5.77	14.24	1.15	44.54	335.13	6.71	16.24	3.12	95.18	130.86	7.64	18.24	20.11	118.51	162.78	8.58
10.26	2.24	144.63	80.99	4.85	12.26	1.54	93.92	68.82	5.78	14.26	1.11	42.69	334.43	6.72	16.26	3.12	98.28	130.26	7.65	18.26	20.40	118.89	164.27	8.59
10.28	2.20	152.26	80.99	4.86	12.28	1.47	91.43	67.82	5.79	14.28	1.08	39.63	334.93	6.73	16.28	3.64	110.51	137.74	7.66	18.28	20.62	117.42	165.27	8.60
10.30	2.15	155.77	81.69	4.87	12.30	1.44	89.29	67.03	5.80	14.30	1.11	36.44	334.93	6.74	16.30	5.14	123.54	162.48	7.67	18.30	20.94	116.07	168.96	8.60
10.32	2.15	159.83	82.79	4.88	12.32	1.39	86.99	66.33	5.81	14.32	1.21	33.15	338.92	6.75	16.32	6.28	127.72	175.64	7.68	18.32	21.29	117.25	171.56	8.61
10.34	2.17	158.32	83.28	4.89	12.34	1.33	85.24	65.53	5.82	14.34	1.34	30.69	341.11	6.76	16.34	6.80	134.30	181.83	7.69	18.34	21.51	118.97	173.35	8.62
10.36	2.17	158.41	83.68	4.90	12.36	1.36	79.11	65.03	5.83	14.36	1.48	32.10	349.59	6.76	16.36	6.87	129.96	183.22	7.70	18.36	21.65	121.40	175.94	8.63
10.38	2.09	160.49	85.68	4.90	12.38	1.36	75.25	64.83	5.84	14.38	1.53	35.51	348.30	6.77	16.38	6.40	124.56	175.25	7.71	18.38	21.71	123.34	177.54	8.64
10.40	2.04	162.41	86.28	4.91	12.40	1.37	69.44	64.23	5.85	14.40	1.66	37.27	352.19	6.78	16.40	5.39	119.20	158.09	7.72	18.40	22.12	125.92	180.73	8.65
10.42	2.05	158.28	86.28	4.92	12.42	1.34	66.63	63.64	5.86	14.42	1.91	40.14	362.16	6.79	16.42	4.29	113.65	143.23	7.73	18.42	22.42	127.36	181.53	8.66
10.44	1.98	154.51	86.28	4.93	12.44	1.30	67.81	63.24	5.87	14.44	2.64	47.20	386.90	6.80	16.44	3.44	112.88	133.75	7.74	18.44	22.84	126.59	183.03	8.67
10.46	1.98	152.60	87.17	4.94	12.46	1.33	64.74	63.24	5.88	14.46	3.69	52.25	52.36	6.81	16.46	2.93	120.54	128.67	7.74	18.46	23.13	130.39	183.42	8.68
10.48	2.04	144.74	88.07	4.95	12.48	1.33	62.86	63.34	5.89	14.48	3.69	56.43	57.05	6.82	16.48	3.01	119.58	141.03	7.75	18.48	23.66	134.41	184.52	8.69
10.50	2.07	135.00	88.17	4.96	12.50	1.37	61.58	63.64	5.89	14.50	2.99	70.67	53.62	6.83	16.50	3.43	114.22	150.41	7.76	18.50	23.98	135.08	182.03	8.70
10.52	2.10	130.08	87.77	4.97	12.52	1.39	61.46	63.44	5.90	14.52	2.32	94.36	48.18	6.84	16.52	3.65	118.05	156.49	7.77	18.52	24.11	137.02	178.44	8.71
10.54	2.11	131.33	87.77	4.98	12.54	1.44	60.47	64.03	5.91	14.54	1.78	120.22	52.26	6.85	16.54	3.95	111.05	161.68	7.78	18.54	24.84	138.04	150.51	8.72
10.56	2.16	130.53	87.97	4.99	12.56	1.49	59.10	64.53	5.92	14.56	1.58	127.34	148.81	6.86	16.56	3.83	113.67	147.32	7.79	18.56	24.04	138.56	132.56	8.73
10.58	2.15	131.58	87.77	5.00	12.58	1.50	59.04	64.83	5.93	14.58	1.56	109.24	221.43	6.87	16.58	3.55	116.35	104.13	7.80	18.58	23.82	134.45	121.29	8.74
10.60	2.16	137.52	88.07	5.01	12.60	1.51	58.49	64.83	5.94	14.60	1.54	101.99	241.37	6.88	16.60	3.47	117.02	76.00	7.81	18.60	22.96	136.24	109.02	8.74
10.62	2.13	139.53	87.57	5.02	12.62	1.55	60.73	65.13	5.95	14.62	1.48	96.18	275.19	6.89	16.62	3.74	114.88	72.01	7.82	18.62	22.39	133.97	103.33	8.75
10.64	2.13	142.97	87.37	5.03	12.64	1.64	62.62	66.43	5.96	14.64	1.40	85.16	301.82	6.89	16.64	4.19	111.52	70.32	7.83	18.64	21.81	130.36	105.43	8.76
10.66	2.11	143.32	87.17	5.04	12.66	1.71	65.75	68.12	5.97	14.66	1.35	62.65	297.23	6.90	16.66	4.48	110.24	68.42	7.84	18.66	21.47	147.00	100.44	8.77
10.68	2.13	144.28	87.47	5.04	12.68	1.79	67.54	69.32	5.98	14.68	1.29	52.44	299.12	6.91	16.68	4.64	110.08	66.23	7.85	18.68	21.63	141.92	98.35	8.78
10.70	2.15	143.80	87.77	5.05	12.70	1.82	69.90	69.92	5.99	14.70	1.30	50.77	299.72	6.92	16.70	4.65	114.36	63.83	7.86	18.70	22.03	167.20	100.94	8.79
10.72	2.16	145.05	87.77	5.06	12.72	1.92	72.20	71.61	6.00	14.72	1.29	50.84	300.12	6.93	16.72	4.60	120.17	62.44	7.87	18.72	22.47	178.56	105.83	8.80
10.74	2.20	146.32	88.27	5.07	12.74	2.00	76.00	72.61	6.01	14.74	1.37	48.47	302.12	6.94	16.74	4.57	124.67	61.74	7.88	18.74	22.95	164.40	107.82	8.81
10.76	2.23	144.09	88.67	5.08	12.76	2.05	78.05	72.91	6.02	14.76	1.43	45.02	302.52	6.95	16.76	4.57	128.28	61.54	7.89	18.76	23.21	164.38	109.32	8.82
10.78	2.26	144.05	88.87	5.09	12.78	2.07	79.83	73.31	6.03	14.78	1.53	44.83	305.71	6.96	16.78	4.58	130.48	61.44	7.89	18.78	23.20	185.92	107.12	8.83
10.80	2.22	144.15	88.47	5.10	12.80	2.11	82.33	73.71	6.04	14.80	1.85	50.99	317.68	6.97	16.80	4.62	133.99	61.34	7.90	18.80	22.91	184.25	106.82	8.84
10.82	2.19	146.70	88.17	5.11	12.82	2.11	86.22	73.51	6.04	14.82	2.19	59.07	328.75	6.98	16.82	4.78	137.31	61.94	7.91	18.82	22.46	188.25	104.93	8.85
10.84	2.19	148.30	88.07	5.12	12.84	2.13	89.77	73.51	6.05	14.84	2.15	56.74	279.18	6.99	16.84	5.14	137.66	64.03	7.92	18.84	22.17	182.36	104.43	8.86
10.86	2.19	147.21	88.27	5.13	12.86	2.12	93.18	75.60	6.06	14.86	2.02	55.49	254.14	7.00	16.86	5.87	143.28	68.32	7.93	18.86	21.79	178.20	103.13	8.87
10.88	2.18	146.76	88.37	5.14	12.88	2.13	102.35	77.30	6.07	14.88	2.01	72.89	274.79	7.01	16.88	6.67	154.10	74.01	7.94	18.88	21.44	180.21	103.63	8.88
10.90	2.20	148.20	89.37	5.15	12.90	2.17	103.85	79.89	6.08	14.90	2.16	89.98	291.74	7.02	16.90	8.76	172.82	94.46	7.95</					

FERRARA DEPARTMENT

Via Annibale Zucchini, 69 – 44122 Ferrara (FE)

Tel.: +39 0532 56771 - Fax.: +39 0532 56119

SOCOTEC ITALIA Srl – P.Iva 01872430648

Headquarters: Via Bariola, 101-103 - 20020 Lainate (MI)

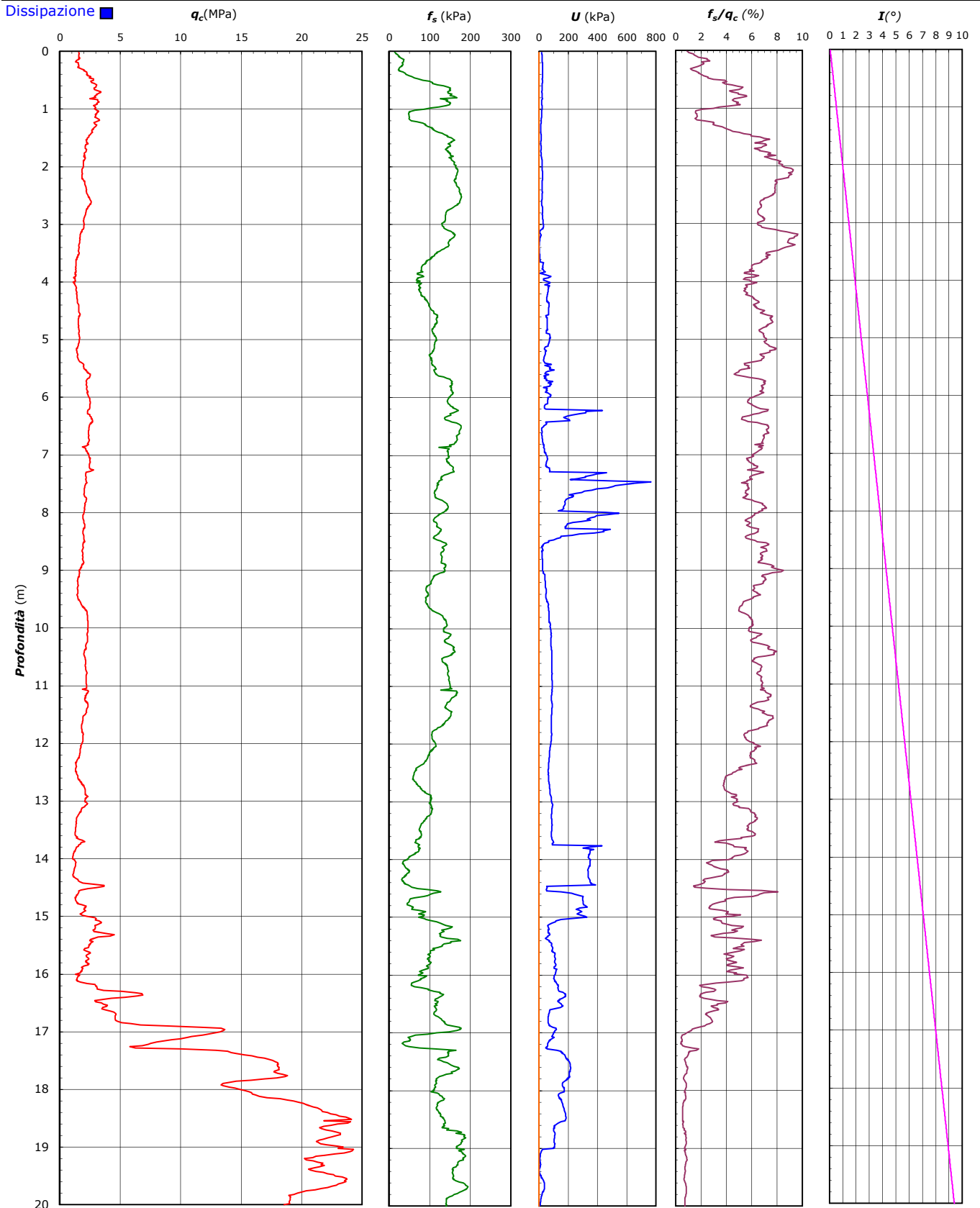
Tel.: +39 02 9375 0000 - Fax: +39 02 9375 0099

www.socotec.it



COMMITTENTE: ENGEO S.r.l. - -Via Suor Maria Adorni, 2
CANTIERE: SP 12 - Qre Artigianale di Soragna 43019 (PR)

PROVA N°: CPTU 04 PROF. FALDA (m da p.c.): n.r. PUNTA: Tecnopenta G1-CPL2IN (matr. 121114)[a = 0.66]
 DATA: 26/10/22 PREFORO (m da p.c.): LAT. (WGS 84): 44.922582° LONG. (WGS 84): 10.114498°
 COMMESSA: 0345FE/22 C. SITO N°: SF221125 del 08.11.22 OPERATORE: L. Formisano



FERRARA DEPARTMENT

Via Annibale Zucchini, 69 – 44122 Ferrara (FE)

Tel.: +39 0532 56771 - Fax.: +39 0532 56119

SOCOTEC ITALIA Srl – P.Iva 01872430648

Headquarters: Via Bariola, 101-103 - 20020 Lainate (MI)

Tel.: +39 02 9375 0000 - Fax: +39 02 9375 0099

www.socotec.it



COMMITTENTE: ENGEO S.r.l. - -Via Suor Maria Adorni, 2

CANTIERE: SP 12 - Qre Artigianale di Soragna 43019 (PR)

PROVA N°: CPTU 04 PROF. FALDA (m da p.c.): n.r. PUNTA: Tecnopenta G1-CPL2IN (matr. 121114)[a = 0.66]
DATA: 26/10/22 PREFORO (m da p.c.): LAT. (WGS 84): 44.922582° LONG. (WGS 84): 10.114498°
COMMESSA: 0345FE/22 C. SITO N°: SF221125 del 08.11.22 OPERATORE: L. Formisano

UBICAZIONE

Località: SP 12 - Qre Artigianale di Soragna 43019 (PR)



NOTE: Utilizzato 1 anello allargatore da inizio prova

FERRARA DEPARTMENT

Via Annibale Zucchini, 69 – 44122 Ferrara (FE)

Tel.: +39 0532 56771 - Fax.: +39 0532 56119

SOCOTEC ITALIA Srl – P.Iva 01872430648

Headquarters: Via Bariola, 101-103 - 20020 Lainate (MI)

Tel.: +39 02 9375 0000 - Fax: +39 02 9375 0099

www.socotec.it



COMMITTENTE: ENGEО S.r.l. - -Via Suor Maria Adorni, 2

CANTIERE: Via IV Novembre- Orsigna (PR)

PROVA N°: CPTU 05 PROF. FALDA (m da p.c.): 10.30

PUNTA: Tecnopenta G1-CPL2IN (matr. 121114)[a = 0.66]

DATA: 24/10/22

PREFORO (m da p.c.):

LAT. (WGS 84): 44.931180°

LONG. (WGS 84): 10.116159°

COMMESSA: 0345FE/22

C. SITO N°: SF221126 del 08.11.22 OPERATORE: L. Formisano

prof. m	qc Mpa	fs kPa	U kPa	incl. gradi	prof. m	qc Mpa	fs kPa	U kPa	incl. gradi	prof. m	qc Mpa	fs kPa	U kPa	incl. gradi	prof. m	qc Mpa	fs kPa	U kPa	incl. gradi	prof. m	qc Mpa	fs kPa	U kPa	incl. gradi
0.02	2.21	16.14	10.37	0.52	2.02	3.08	160.57	16.96	1.34	4.02	1.70	116.55	34.91	2.15	6.02	1.48	103.66	40.79	2.97	8.02	1.68	111.78	13.76	3.78
0.04	2.88	32.77	12.57	0.53	2.04	2.95	149.71	20.05	1.34	4.04	1.68	115.88	31.52	2.16	6.04	1.57	103.56	41.29	2.98	8.04	1.69	111.01	13.96	3.79
0.06	3.58	32.49	12.57	0.54	2.06	2.45	146.26	22.14	1.35	4.06	1.64	115.40	31.12	2.17	6.06	1.53	104.87	40.69	2.98	8.06	1.70	111.62	13.66	3.80
0.08	3.78	35.49	10.47	0.55	2.08	2.72	160.92	23.34	1.36	4.08	1.56	117.13	31.12	2.18	6.08	1.54	107.20	40.59	2.99	8.08	1.70	113.92	13.27	3.81
0.10	3.95	40.76	9.77	0.55	2.10	2.99	142.24	29.72	1.37	4.10	1.48	117.73	25.23	2.18	6.10	1.59	108.22	40.89	3.00	8.10	1.66	113.47	13.37	3.82
0.12	3.74	58.57	6.28	0.56	2.12	3.72	113.44	24.64	1.38	4.12	1.39	114.96	25.33	2.19	6.12	1.68	105.64	41.69	3.01	8.12	1.67	112.51	13.56	3.82
0.14	3.80	60.17	4.99	0.57	2.14	4.84	93.81	18.95	1.39	4.14	1.34	112.82	40.20	2.20	6.14	1.60	103.53	40.59	3.02	8.14	1.72	111.56	13.86	3.83
0.16	3.92	64.35	4.59	0.58	2.16	4.52	61.94	22.74	1.39	4.16	1.28	109.98	63.64	2.21	6.16	1.63	99.41	40.40	3.02	8.16	1.79	106.10	13.96	3.84
0.18	3.96	66.01	1.80	0.59	2.18	3.72	112.74	26.13	1.40	4.18	1.26	103.76	60.74	2.22	6.18	1.72	97.97	40.59	3.03	8.18	1.75	109.42	13.86	3.85
0.20	3.88	71.17	1.40	0.59	2.20	2.97	145.24	28.03	1.41	4.20	1.22	95.90	64.33	2.23	6.20	1.83	101.45	41.29	3.04	8.20	1.79	113.09	14.16	3.86
0.22	3.84	77.40	5.39	0.60	2.22	2.02	164.02	34.61	1.42	4.22	1.20	89.90	57.75	2.23	6.22	1.82	103.37	41.59	3.05	8.22	1.83	112.99	14.36	3.86
0.24	3.89	78.43	7.18	0.61	2.24	2.01	180.94	30.82	1.43	4.24	1.19	84.96	50.27	2.24	6.24	1.91	104.71	42.39	3.06	8.24	1.84	116.99	14.76	3.87
0.26	4.04	83.19	6.78	0.62	2.26	1.81	196.11	31.02	1.43	4.26	1.23	79.05	51.47	2.25	6.26	2.04	103.94	44.48	3.07	8.26	1.80	121.90	14.86	3.88
0.28	3.90	95.99	9.08	0.63	2.28	1.62	211.53	31.72	1.44	4.28	1.28	74.87	48.87	2.26	6.28	2.15	105.73	45.98	3.07	8.28	1.77	128.29	14.86	3.89
0.30	3.96	109.25	8.98	0.64	2.30	1.63	219.65	31.52	1.45	4.30	1.31	73.66	45.48	2.27	6.30	2.24	105.32	46.18	3.08	8.30	1.76	133.68	17.45	3.90
0.32	4.03	129.01	10.17	0.64	2.32	1.68	204.83	30.52	1.46	4.32	1.32	75.58	32.62	2.27	6.32	2.39	102.28	45.98	3.09	8.32	1.83	133.37	17.95	3.91
0.34	3.93	145.49	11.77	0.65	2.34	1.74	180.03	29.52	1.47	4.34	1.28	79.25	33.71	2.28	6.34	2.39	105.41	45.58	3.10	8.34	1.88	133.33	18.45	3.91
0.36	3.97	156.96	11.37	0.66	2.36	1.68	146.62	29.92	1.48	4.36	1.23	83.31	43.69	2.29	6.36	2.32	108.16	44.88	3.11	8.36	1.86	132.21	18.35	3.92
0.38	3.91	162.33	11.17	0.67	2.38	1.71	137.58	29.42	1.48	4.38	1.21	85.90	57.25	2.30	6.38	2.24	110.14	44.48	3.11	8.38	1.88	128.48	18.45	3.93
0.40	3.77	154.60	11.97	0.68	2.40	1.76	133.04	29.32	1.49	4.40	1.16	85.42	94.26	2.31	6.40	2.25	115.92	44.09	3.12	8.40	1.88	128.57	18.35	3.94
0.42	3.75	138.67	12.57	0.68	2.42	1.78	128.96	29.32	1.50	4.42	1.14	83.83	116.10	2.32	6.42	2.22	124.92	43.69	3.13	8.42	1.89	127.77	18.15	3.95
0.44	3.46	114.03	15.26	0.69	2.44	1.81	131.95	29.12	1.51	4.44	1.14	82.10	115.90	2.32	6.44	2.15	132.74	43.29	3.14	8.44	1.84	129.21	18.35	3.95
0.46	3.51	104.42	14.66	0.70	2.46	1.87	138.78	28.03	1.52	4.46	1.12	79.49	111.81	2.33	6.46	2.13	139.00	42.89	3.15	8.46	1.82	133.42	18.45	3.96
0.48	3.49	91.27	15.16	0.71	2.48	1.80	143.99	27.83	1.52	4.48	1.11	74.80	100.34	2.34	6.48	2.07	147.24	42.59	3.16	8.48	1.80	134.64	18.45	3.97
0.50	3.43	84.57	16.66	0.72	2.50	1.63	140.79	29.62	1.53	4.50	1.12	69.79	105.83	2.35	6.50	2.05	150.75	41.89	3.16	8.50	1.83	133.71	19.35	3.98
0.52	3.45	86.62	16.46	0.72	2.52	1.57	143.06	29.92	1.54	4.52	1.14	65.64	104.23	2.36	6.52	2.15	153.27	42.49	3.17	8.52	1.87	131.95	19.95	3.99
0.54	3.45	87.67	17.26	0.73	2.54	1.66	141.27	29.62	1.55	4.54	1.19	60.53	109.42	2.36	6.54	2.14	155.16	42.39	3.18	8.54	1.87	131.79	19.95	4.00
0.56	3.49	92.43	17.45	0.74	2.56	1.61	136.60	30.82	1.56	4.56	1.25	59.71	121.98	2.37	6.56	2.19	155.00	42.59	3.19	8.56	1.85	129.78	20.05	4.00
0.58	3.48	96.62	17.85	0.75	2.58	1.48	132.51	32.81	1.57	4.58	1.29	60.57	117.79	2.38	6.58	2.19	155.25	42.69	3.20	8.58	1.86	126.62	20.75	4.01
0.60	3.42	106.96	18.35	0.76	2.60	1.44	124.28	33.41	1.57	4.60	1.33	61.47	111.21	2.39	6.60	2.21	156.94	42.89	3.20	8.60	1.86	124.99	23.24	4.02
0.62	3.53	110.06	17.85	0.77	2.62	1.62	112.93	32.72	1.58	4.62	1.38	63.07	56.85	2.40	6.62	2.24	158.19	43.09	3.21	8.62	1.86	124.67	23.94	4.03
0.64	3.75	109.49	16.86	0.77	2.64	1.66	117.35	32.62	1.59	4.64	1.42	64.73	65.53	2.41	6.64	2.21	158.28	43.29	3.22	8.64	1.93	118.92	24.34	4.04
0.66	3.99	104.35	14.86	0.78	2.66	1.62	121.62	32.72	1.60	4.66	1.42	69.20	84.48	2.41	6.66	2.22	152.31	42.99	3.23	8.66	1.94	113.52	24.44	4.04
0.69	4.38	105.72	11.97	0.79	2.68	1.81	119.52	30.62	1.61	4.68	1.45	75.10	90.17	2.42	6.68	2.13	152.79	42.49	3.24	8.68	1.92	107.07	24.34	4.05
0.70	4.62	116.64	10.27	0.80	2.70	1.94	117.67	29.32	1.61	4.70	1.43	79.23	72.61	2.43	6.70	2.11	142.73	42.09	3.25	8.70	1.89	103.56	27.33	4.06
0.72	4.74	126.96	10.47	0.81	2.72	2.07	114.99	30.02	1.62	4.72	1.45	82.78	72.51	2.44	6.72	2.13	136.12	41.89	3.25	8.72	1.92	102.54	36.90	4.07
0.74	4.82	125.26	11.67	0.81	2.74	1.72	115.92	33.01	1.63	4.74	1.45	85.72	82.69	2.45	6.74	2.16	127.88	41.29	3.26	8.74	1.99	101.29	36.51	4.08
0.76	5.07	120.86	9.97	0.82	2.76	1.68	117.38	33.31	1.64	4.76	1.46	86.94	83.68	2.45	6.76	2.09	123.41	40.50	3.27	8.76	2.03	100.81	36.21	4.09
0.79	5.37	117.06	8.48	0.83	2.78	1.71	116.81	32.91	1.65	4.78	1.41	91.89	98.64	2.46	6.78	1.94	127.85	39.90	3.28	8.78	2.04	104.99	36.11	4.09
0.80	5.29	112.23	9.38	0.84	2.80	1.79	112.85	33.01	1.65	4.80	1.42	90.87	95.45	2.47	6.80	1.92	126.73	40.00	3.29	8.80	2.04	109.30	36.01	4.10
0.82	4.96	122.86	12.07	0.85	2.82	1.86	109.50	32.81	1.66	4.82	1.42	91.06	103.43	2.48	6.82	1.92	126.03	40.00	3.29	8.82	2.05	111.99	36.91	4.11
0.84	4.36	113.26	0.50	0.86	2.84	2.08	108.96	32.91	1.67	4.84	1.43	93.53	100.64	2.49	6.84	1.92	125.52	40.10	3.30	8.84	2.05	114.41	35.41	4.12
0.86	4.01	130.60	4.79	0.86	2.86	2.21	109.76	33.01	1.68	4.86	1.41	96.08	105.73	2.49	6.86	1.93	124.72	40.20	3.31	8.86	2.11	115.53	36.51	4.13
0.88	3.78	141.30	7.18	0.87	2.88	2.28	109.83	33.61	1.69	4.88	1.37	95.99	90.96	2.50	6.89	1.94	124.72	40.20	3.32	8.88	2.17	116.04	36.61	4.13
0.90	3.88	137.12	7.68	0.88	2.90	2.33	114.75	34.11	1.70	4.90	1.42	94.17	81.59	2.51	6.90	2.13	127.72	39.70	3.33	8.90	2.13	120.48	36.31	4.14
0.92	3.78	145.16	1																					

FERRARA DEPARTMENT

Via Annibale Zucchini, 69 - 44122 Ferrara (FE)

Tel.: +39 0532 56771 - Fax.: +39 0532 56119

SOCOTEC ITALIA Srl - P.Iva 01872430648

Headquarters: Via Bariola, 101-103 - 20020 Lainate (MI)

Tel.: +39 02 9375 0000 - Fax: +39 02 9375 0099

www.socotec.it



COMMITTENTE: ENGE0 S.r.l. - Via Suor Maria Adorni, 2

CANTIERE: Via IV Novembre- Orsigna (PR)

PROVA N°: CPTU 05 PROF. FALDA (m da p.c.): 10.30

PUNTA: Tecnopenta G1-CPL2IN (matr. 121114)[a = 0.66]

DATA: 24/10/22

PREFORO (m da p.c.):

LAT. (WGS 84): 44.931180°

LONG. (WGS 84): 10.116159°

COMMESSA: 0345FE/22

C. SITO N°: SF221126 del 08.11.22 OPERATORE: L. Formisano

prof. m	qc Mpa	fs kPa	U kPa	incl. gradi	prof. m	qc Mpa	fs kPa	U kPa	incl. gradi	prof. m	qc Mpa	fs kPa	U kPa	incl. gradi	prof. m	qc Mpa	fs kPa	U kPa	incl. gradi	prof. m	qc Mpa	fs kPa	U kPa	incl. gradi
10.02	1.80	122.80	35.41	4.60	12.02	2.80	162.62	72.41	5.41	14.02	18.28	194.62	208.36	6.23	16.02	6.93	63.01	15.76	7.05	18.02	20.46	147.58	80.69	7.86
10.04	1.78	119.64	35.31	4.61	12.04	2.70	159.91	72.51	5.42	14.04	17.94	188.14	204.17	6.24	16.04	6.80	63.58	14.96	7.05	18.04	19.64	142.00	76.40	7.87
10.06	1.79	116.83	35.31	4.62	12.06	2.66	155.94	72.81	5.43	14.06	17.64	176.39	200.68	6.25	16.06	6.78	62.79	14.66	7.06	18.06	18.44	162.92	71.41	7.88
10.08	1.80	112.29	35.21	4.62	12.08	2.65	151.09	73.01	5.44	14.08	17.20	162.59	197.09	6.25	16.08	6.71	68.34	14.46	7.07	18.08	17.88	153.18	70.02	7.89
10.10	1.90	109.32	36.01	4.63	12.10	2.62	145.40	73.61	5.45	14.10	16.98	148.70	194.89	6.26	16.10	6.68	68.73	14.36	7.08	18.10	17.46	139.60	69.02	7.89
10.12	1.95	107.09	36.90	4.64	12.12	2.71	143.42	74.71	5.46	14.12	16.76	136.78	192.90	6.27	16.12	6.62	65.12	13.86	7.09	18.12	17.07	139.60	68.72	7.90
10.14	1.82	102.88	36.11	4.65	12.14	2.99	142.62	76.40	5.46	14.14	16.53	130.42	191.50	6.28	16.14	6.65	62.98	13.76	7.09	18.14	16.82	135.12	68.82	7.91
10.16	1.66	99.46	34.91	4.66	12.16	3.27	142.14	77.80	5.47	14.16	16.15	130.73	191.30	6.29	16.16	6.54	65.12	13.56	7.10	18.16	16.79	119.70	69.62	7.92
10.18	1.61	95.18	34.51	4.66	12.18	3.38	137.13	77.80	5.48	14.18	16.22	130.57	193.50	6.30	16.18	7.01	65.15	14.86	7.11	18.18	16.83	113.24	70.32	7.93
10.20	1.54	91.99	34.01	4.67	12.20	3.22	116.18	77.50	5.49	14.20	17.34	128.29	203.07	6.30	16.20	7.38	64.58	15.86	7.12	18.20	16.93	95.97	71.71	7.93
10.22	1.46	89.08	33.61	4.68	12.22	3.56	102.89	79.89	5.50	14.22	18.88	130.20	213.75	6.31	16.22	7.89	65.57	17.16	7.13	18.22	17.17	96.12	73.41	7.94
10.24	1.40	86.46	33.41	4.69	12.24	4.08	113.68	82.19	5.50	14.24	20.18	139.67	227.51	6.32	16.24	8.46	67.45	18.75	7.14	18.24	17.12	93.75	73.91	7.95
10.26	1.38	87.10	33.21	4.70	12.26	3.98	110.87	80.69	5.51	14.26	21.49	143.95	224.22	6.33	16.26	9.24	71.35	21.34	7.14	18.26	17.44	94.45	76.20	7.96
10.28	1.35	82.82	33.11	4.71	12.28	3.67	98.51	78.90	5.52	14.28	22.22	147.14	220.63	6.34	16.28	10.52	72.15	24.94	7.15	18.28	17.65	96.14	77.70	7.97
10.30	1.29	77.65	32.91	4.71	12.30	3.42	106.30	78.00	5.53	14.30	22.26	153.55	217.93	6.34	16.30	11.59	67.36	27.73	7.16	18.30	18.08	98.18	80.39	7.98
10.32	1.25	72.64	32.72	4.72	12.32	3.34	101.73	78.00	5.54	14.32	22.06	161.88	208.26	6.35	16.32	12.64	70.68	30.22	7.17	18.32	18.63	98.31	83.08	7.98
10.34	1.23	67.75	32.52	4.73	12.34	3.23	107.93	78.30	5.55	14.34	21.80	172.84	201.38	6.36	16.34	13.60	68.64	32.72	7.18	18.34	19.03	100.16	85.58	7.99
10.36	1.21	63.99	32.42	4.74	12.36	3.21	112.30	78.30	5.55	14.36	21.39	177.18	194.20	6.37	16.36	13.48	86.26	33.11	7.18	18.36	19.23	101.59	87.17	8.00
10.38	1.23	60.76	32.32	4.75	12.38	3.25	113.54	78.60	5.56	14.38	20.80	176.80	183.92	6.38	16.38	13.23	91.43	31.92	7.19	18.38	17.77	98.02	85.68	8.01
10.40	1.18	60.28	32.12	4.75	12.40	3.79	119.67	82.59	5.57	14.40	20.32	178.50	176.54	6.39	16.40	13.53	91.91	33.41	7.20	18.40	18.71	98.30	86.38	8.02
10.42	1.19	60.92	31.92	4.76	12.42	4.70	136.59	87.27	5.58	14.42	19.79	177.90	168.96	6.39	16.42	13.83	95.10	35.21	7.21	18.42	18.35	98.21	85.98	8.02
10.44	1.19	59.74	31.92	4.77	12.44	5.54	138.61	90.57	5.59	14.44	19.23	173.60	162.28	6.40	16.44	14.16	96.51	36.90	7.22	18.44	18.03	98.94	85.18	8.03
10.46	1.26	58.59	32.12	4.78	12.46	5.75	131.77	90.37	5.59	14.46	18.69	168.24	155.70	6.41	16.46	14.30	96.38	38.10	7.23	18.46	17.70	98.11	84.38	8.04
10.48	1.29	57.77	32.22	4.79	12.48	5.22	129.69	86.87	5.60	14.48	18.23	157.57	149.51	6.42	16.48	14.47	95.29	39.50	7.23	18.48	17.42	96.16	83.38	8.05
10.50	1.35	55.76	32.22	4.79	12.50	4.60	125.77	83.78	5.61	14.50	17.78	151.02	144.43	6.43	16.50	14.26	76.87	41.49	7.24	18.50	16.93	93.13	80.79	8.06
10.52	1.38	54.38	32.12	4.80	12.52	4.26	121.90	82.39	5.62	14.52	17.52	148.88	140.93	6.43	16.52	14.45	72.78	42.59	7.25	18.52	16.29	97.60	77.50	8.07
10.54	1.42	55.09	32.02	4.81	12.54	3.92	105.68	81.69	5.63	14.54	17.34	143.20	137.04	6.44	16.54	14.49	71.41	42.89	7.26	18.54	15.38	96.16	73.31	8.07
10.56	1.44	59.18	32.22	4.82	12.56	3.78	109.03	81.99	5.63	14.56	17.38	140.42	134.65	6.45	16.56	14.45	70.48	43.98	7.27	18.56	14.97	93.61	70.62	8.08
10.58	1.49	62.08	32.62	4.83	12.58	3.58	125.92	81.59	5.64	14.58	17.54	134.54	132.96	6.46	16.58	14.43	73.68	44.98	7.27	18.58	14.75	89.71	68.32	8.09
10.60	1.54	62.53	32.62	4.84	12.60	3.31	141.44	80.69	5.65	14.60	17.59	128.25	130.46	6.47	16.60	14.57	76.84	45.38	7.28	18.60	14.87	87.73	67.52	8.10
10.62	1.52	66.40	32.42	4.84	12.62	3.46	157.91	83.18	5.66	14.62	17.69	126.59	129.36	6.47	16.62	14.71	91.97	46.38	7.29	18.62	14.87	88.56	66.23	8.11
10.64	1.53	68.95	32.72	4.85	12.64	4.50	167.56	91.86	5.67	14.64	17.64	123.08	127.47	6.48	16.64	15.33	87.44	49.17	7.30	18.64	15.56	90.51	68.42	8.11
10.66	1.57	69.78	33.11	4.86	12.66	6.14	153.86	99.54	5.68	14.66	17.64	120.27	126.57	6.49	16.66	15.76	86.42	50.97	7.31	18.66	16.38	87.00	70.72	8.12
10.68	1.59	69.63	32.81	4.87	12.68	7.00	140.64	101.54	5.68	14.68	17.54	117.78	125.57	6.50	16.68	16.04	87.21	51.87	7.31	18.68	17.72	87.92	74.61	8.13
10.70	1.57	71.26	32.72	4.88	12.70	8.05	129.56	105.03	5.69	14.70	17.41	117.46	125.18	6.51	16.70	16.28	88.95	53.06	7.32	18.70	18.92	90.73	78.50	8.14
10.72	1.59	70.39	32.72	4.88	12.72	8.79	126.37	108.12	5.70	14.72	17.30	114.74	125.57	6.52	16.72	16.76	88.59	54.66	7.33	18.72	19.68	99.83	80.59	8.15
10.74	1.60	71.93	32.72	4.89	12.74	9.79	120.36	112.41	5.71	14.74	17.28	118.42	126.37	6.52	16.74	17.67	86.35	57.75	7.34	18.74	20.51	107.75	83.08	8.16
10.76	1.60	70.84	32.72	4.90	12.76	10.81	117.52	117.50	5.72	14.76	17.23	118.58	126.77	6.53	16.76	18.67	84.75	61.24	7.35	18.76	20.61	108.78	82.59	8.16
10.78	1.61	71.64	32.52	4.91	12.78	12.39	104.78	125.37	5.72	14.78	17.42	118.29	129.36	6.54	16.78	19.76	100.85	63.24	7.36	18.78	20.68	113.31	82.59	8.17
10.80	1.61	72.79	32.42	4.92	12.80	13.87	101.65	132.86	5.73	14.80	17.81	117.17	131.86	6.55	16.80	18.79	157.40	52.96	7.36	18.80	20.57	115.77	81.99	8.18
10.82	1.62	72.80	32.12	4.93	12.82	14.27	102.31	136.45	5.74	14.82	18.06	115.73	133.25	6.56	16.82	19.43	154.91	54.86	7.37	18.82	20.00	119.00	79.89	8.19
10.84	1.58	74.27	32.12	4.93	12.84	14.43	114.67	141.13	5.75	14.84	18.23	114.49	134.95	6.56	16.84	19.58	160.51	55.86	7.38	18.84	19.41	120.25	78.20	8.20
10.86	1.55	76.60	31.82	4.94	12.86	14.69	120.19	145.02	5.76	14.86	18.37	112.60	135.65	6.57	16.86	19.36	146.10	56.05	7.39	18.86	18.90	125.93	77.90	8.20
10.88	1.55	77.72	31.62	4.95	12.88	15.13	121.02	149.61	5.77	14.88	18.46	112.09	137.04	6.58	16.88	19.55</								

FERRARA DEPARTMENT

Via Annibale Zucchini, 69 – 44122 Ferrara (FE)

Tel.: +39 0532 56771 - Fax.: +39 0532 56119

SOCOTEC ITALIA Srl – P.Iva 01872430648

Headquarters: Via Bariola, 101-103 - 20020 Lainate (MI)

Tel.: +39 02 9375 0000 - Fax: +39 02 9375 0099

www.socotec.it



COMMITTENTE: ENGEО S.r.l. - -Via Suor Maria Adorni, 2

CANTIERE: Via IV Novembre- Orsigna (PR)

PROVA N°: CPTU 05 PROF. FALDA (m da p.c.): 10.30

PUNTA: Tecnopenta G1-CPL2IN (matr. 121114)[a = 0.66]

DATA: 24/10/22

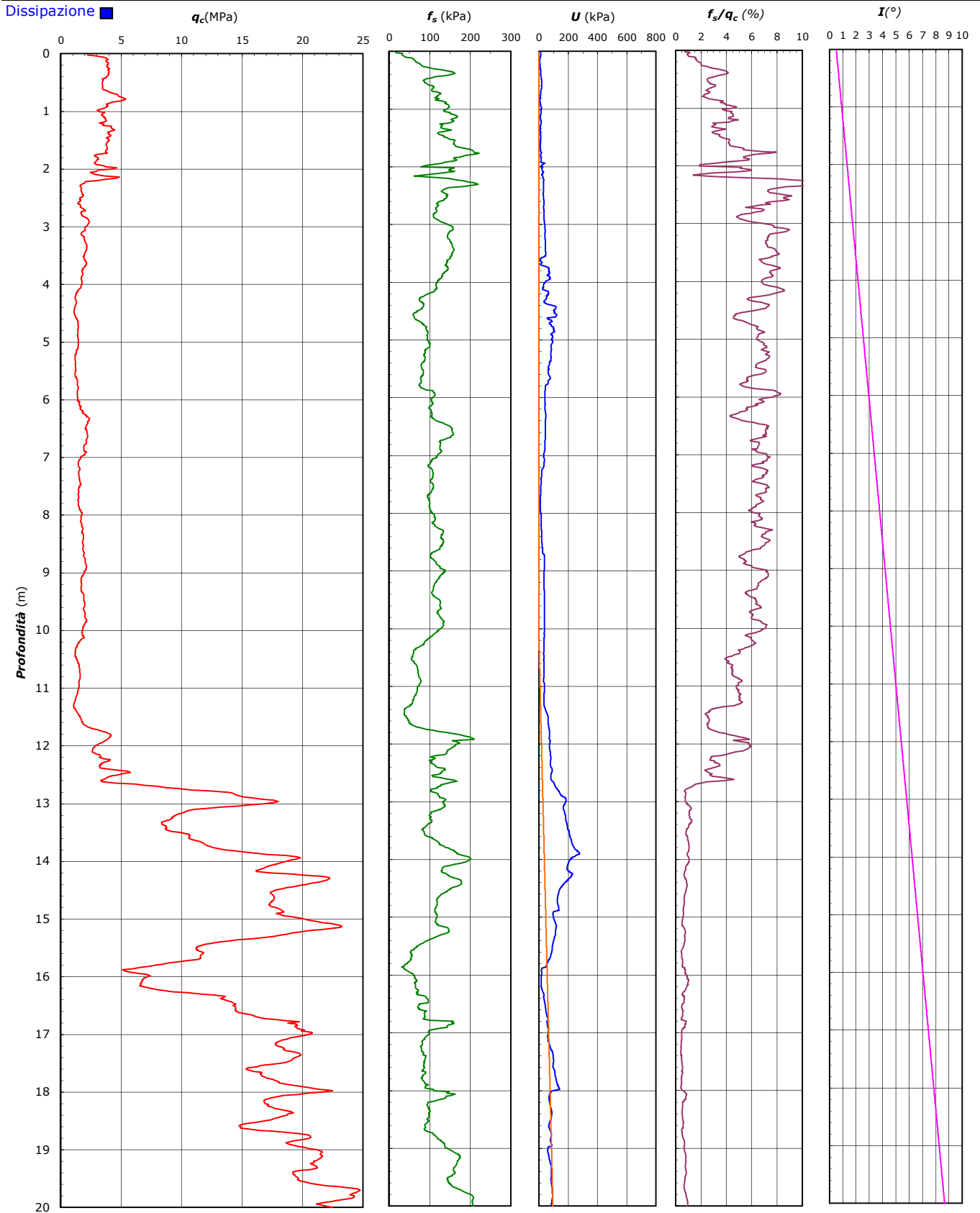
PREFORO (m da p.c.):

LAT. (WGS 84): 44.931180°

LONG. (WGS 84): 10.116159°

COMMESSA: 0345FE/22

C. SITO N°: SF221126 del 08.11.22 OPERATORE: L. Formisano



FERRARA DEPARTMENT

Via Annibale Zucchini, 69 – 44122 Ferrara (FE)

Tel.: +39 0532 56771 - Fax.: +39 0532 56119

SOCOTEC ITALIA Srl – P.Iva 01872430648

Headquarters: Via Bariola, 101-103 - 20020 Lainate (MI)

Tel.: +39 02 9375 0000 - Fax: +39 02 9375 0099

www.socotec.it



COMMITTENTE: ENGEO S.r.l. - -Via Suor Maria Adorni, 2

CANTIERE: Via IV Novembre- Orsigna (PR)

PROVA N°: CPTU 05 PROF. FALDA (m da p.c.): 10.30 PUNTA: Tecnopenta G1-CPL2IN (matr. 121114)[a = 0.66]
DATA: 24/10/22 PREFORO (m da p.c.): LAT. (WGS 84): 44.931180° LONG. (WGS 84): 10.116159°
COMMESSA: 0345FE/22 C. SITO N°: SF221126 del 08.11.22 OPERATORE: L. Formisano

UBICAZIONE

Località: Via IV Novembre- Orsigna (PR)



NOTE: Utilizzato 1 anello allargatore da inizio prova