



PROTEZIONE CIVILE
 Presidenza del Consiglio dei Ministri
 Dipartimento della Protezione Civile

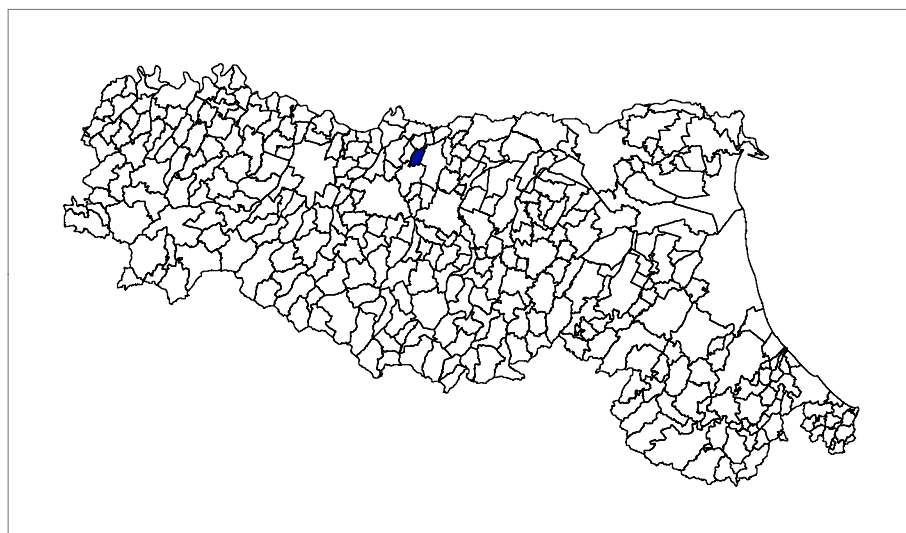


CONFERENZA DELLE REGIONI E
 DELLE PROVINCE AUTONOME

Attuazione dell'articolo 11 della legge 24 giugno 2009, n.77

MICROZONAZIONE SISMICA MODELLAZIONE E CARATTERIZZAZIONE GEOLOGICO TECNICA E SISMICA CONDIZIONE LIMITE PER L'EMERGENZA INDAGINI GEOGNOSTICHE GEOFISICHE DI NUOVA ESECUZIONE

Regione Emilia-Romagna Comune di Rio Saliceto



<p>Regione Emilia Romagna</p> <p><i>Studio realizzato con il contributo di cui all'OPCM 4007/2012. Coordinamento della Regione Emilia-Romagna - Servizio Geologico Luca Martelli</i></p>	<p>Soggetto realizzatore Studio Geologico CENTROGEO</p> <p><i>Progetto:</i> Gian Pietro Mazzetti</p> <p><i>Collaboratori:</i> Stefano Gilli, Andrea Arbizzi, Mauro Mazzetti</p> <p><i>ELaborazioni GIS:</i> Studio Benaglia Professionisti Associati Corrado Ugoletti</p>	<p>Amministrazione comunale <i>Sindaco:</i> Lucio Malvasi <i>Responsabile Servizio Patrimonio e Ambiente:</i> Stefano Faglioni</p> <table border="1" data-bbox="961 1957 1411 2064"> <tr> <td data-bbox="961 1957 1187 2064"> <p>Data Maggio 2015</p> </td> <td data-bbox="1187 1957 1411 2064"></td> </tr> </table>	<p>Data Maggio 2015</p>	
<p>Data Maggio 2015</p>				

INDAGINI RE.MI./MASW

CENTROGEO SURVEY SNC

42015 Correggio (RE) - Piazza S.Quirino, 6 - tel 0522/641001 - Fax: 632162

STUDIO GEOLOGICO CENTROGEO
P.zza S. Quirino, 6 - 42015 Correggio (RE)

INDAGINE Re.Mi. 01

LOCALITA': Rio Saliceto (RE)

COMMITTENTE: Sig. Bernini

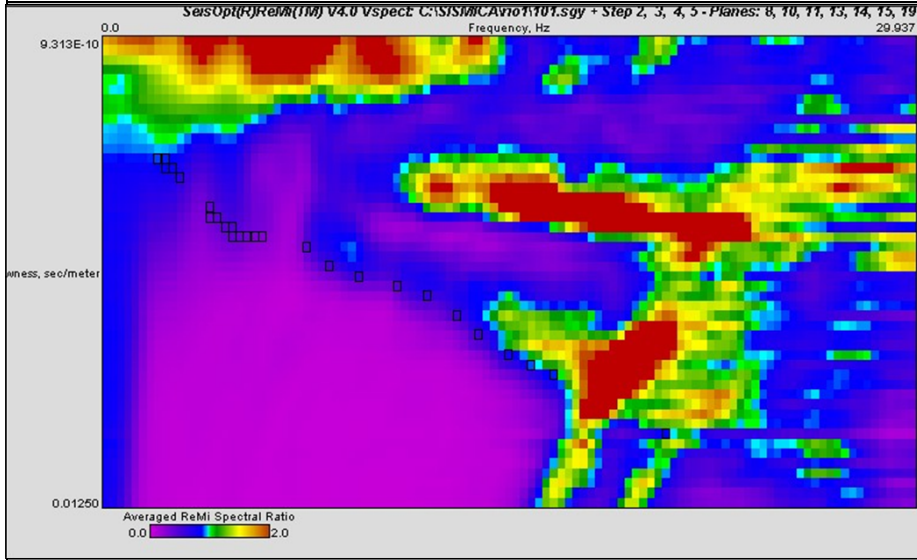
DATA: 27-02-2008

CANTIERE: Via Viottolo Basso

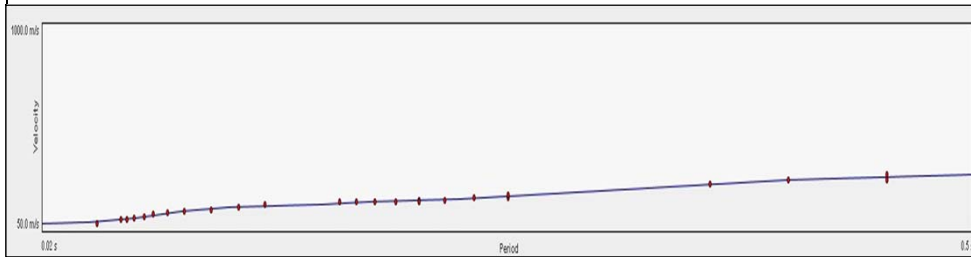
QUOTA: 26 m slm

OPERATORI: M.Mazzetti - Dr. A.Arbizzi

Spettro di potenza



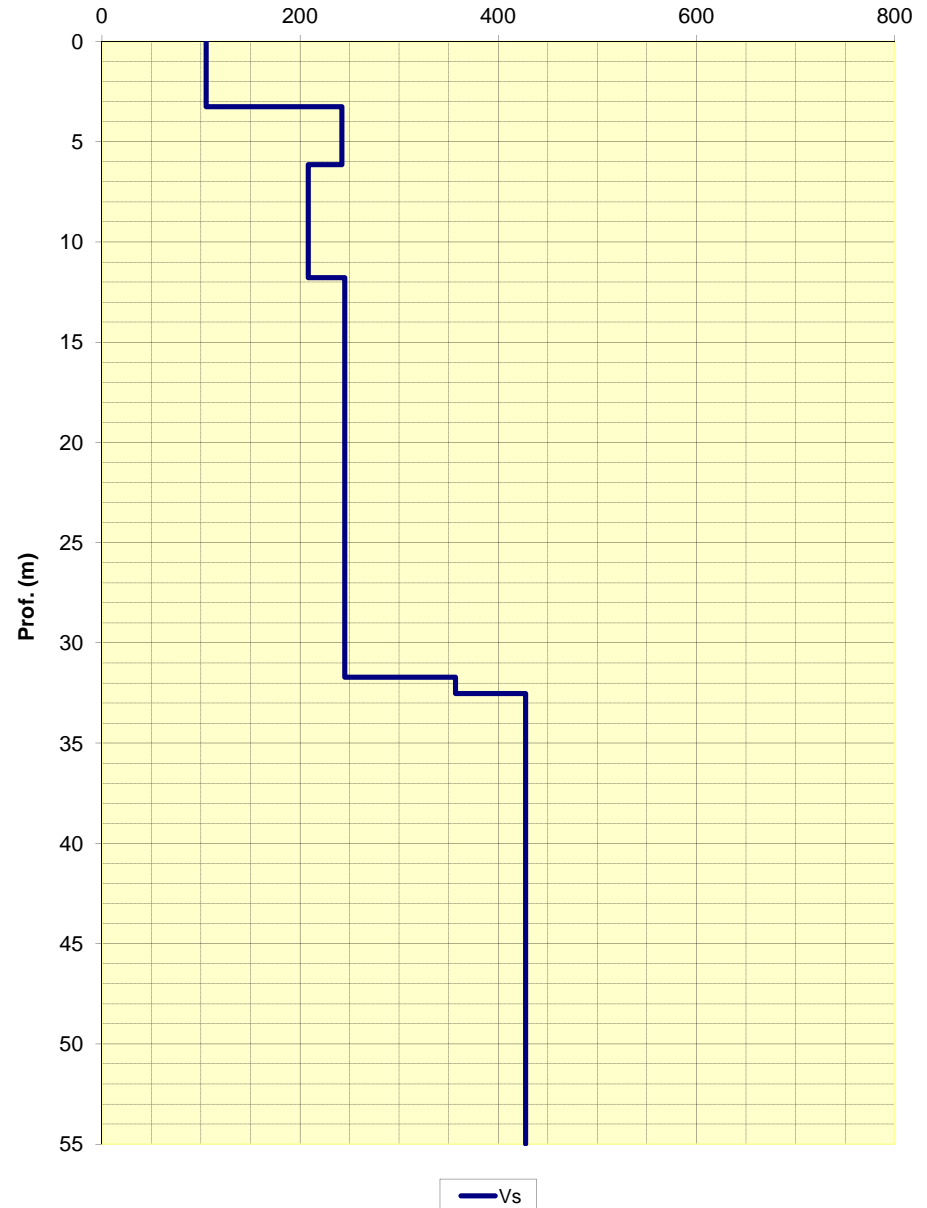
Curva di dispersione



Note:

Modello interpretativo				
Strato n°	Prof. (m)		Spess. (m)	Vs (m/s)
1	0	3,3	3,3	105
2	3,3	6,1	2,8	240
3	6,1	11,8	5,7	210
4	11,8	31,7	19,9	245
5	31,7	32,5	0,8	355
6	32,5	INF	INF	430
7				
8				
9				
10				

**Modello interpretativo
profilo Vs (m/s)**



STUDIO GEOLOGICO CENTROGEO
P.zza S. Quirino, 6 - 42015 CORREGGIO

**INDAGINE Re.Mi.
N° 02**

LOCALITA': Rio Saliceto (RE)

COMMITTENTE: Amm. Comunale

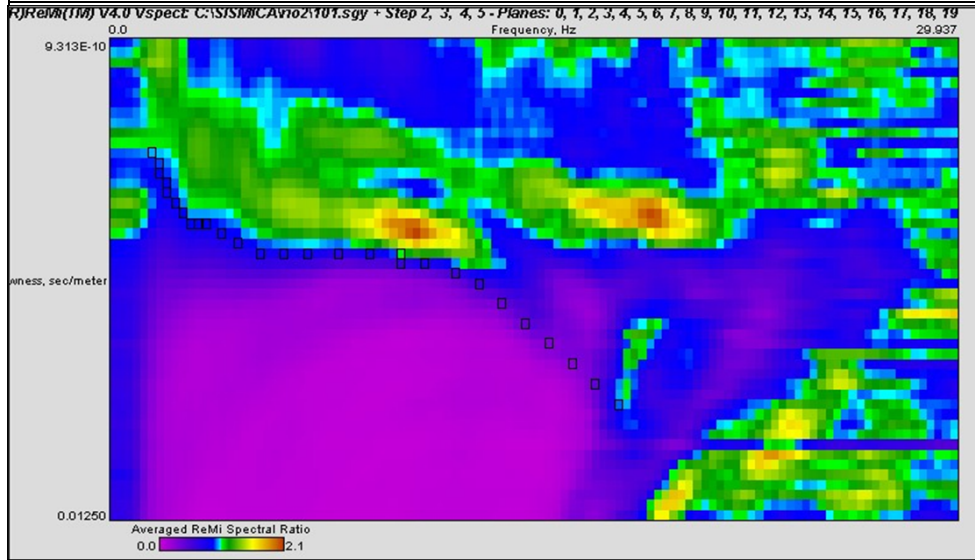
DATA: 23-09-2008

CANTIERE: PSC 2008

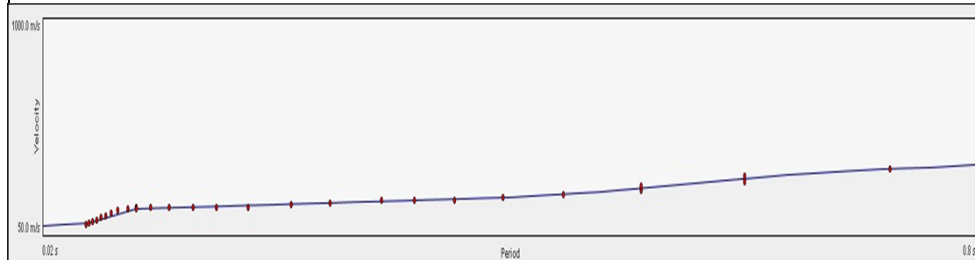
QUOTA: - m slm

OPERATORI: Dr. Arbizzi - Mazzetti M.

Spettro di potenza



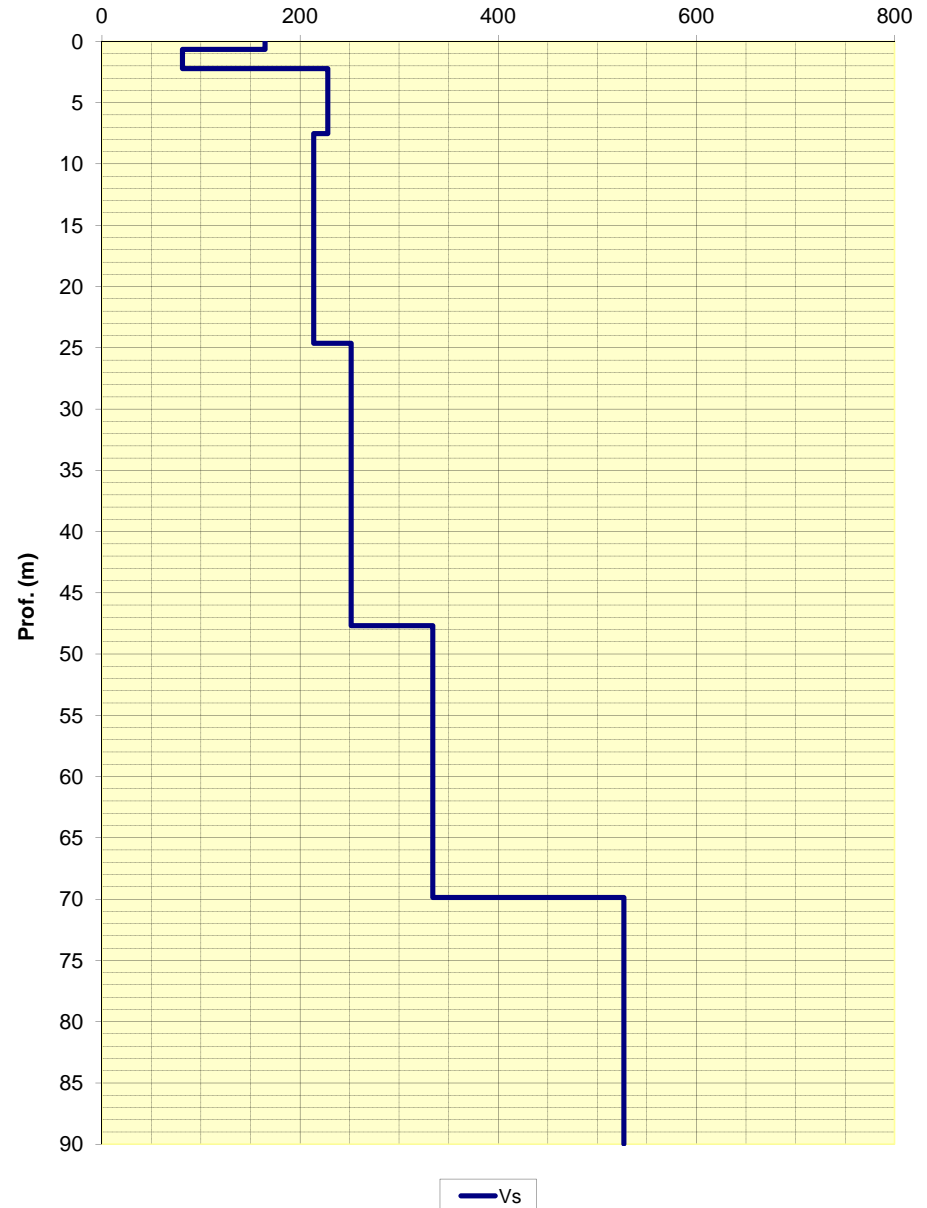
Curva di dispersione



Note:

Modello interpretativo				
Strato n°	Prof. (m)	Spess. (m)	Vs (m/s)	
1	0	0,7	165	
2	0,7	2,2	81	
3	2,2	7,5	230	
4	7,5	24,6	215	
5	24,6	47,7	250	
6	47,7	69,9	330	
7	69,9	INF	525	
8				
9				
10				

**Modello interpretativo
profilo Vs (m/s)**



STUDIO GEOLOGICO CENTROGEO
P.zza S. Quirino, 6 - 42015 CORREGGIO

**INDAGINE Re.Mi.
N° 03**

LOCALITA': Rio Saliceto (RE)

COMMITTENTE: Amm. Comunale

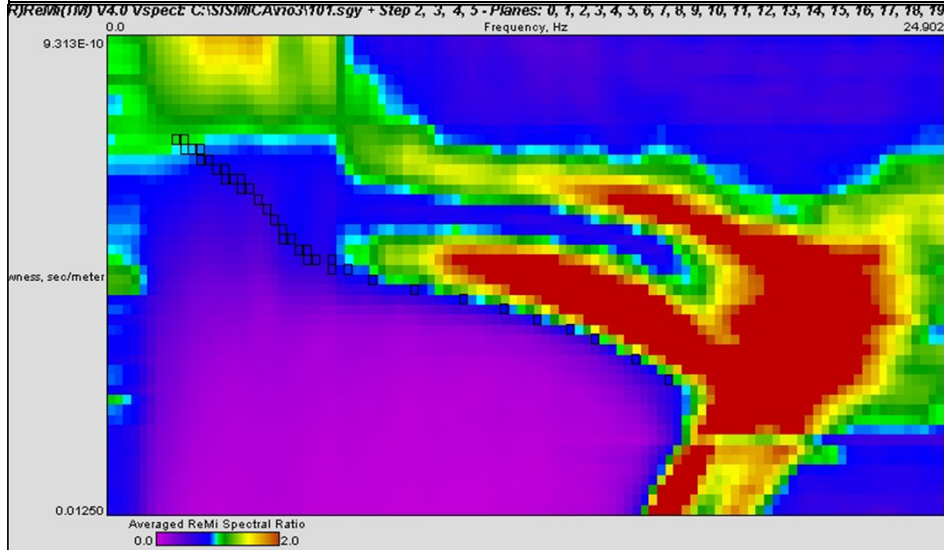
DATA: 23-09-2008

CANTIERE: PSC 2008

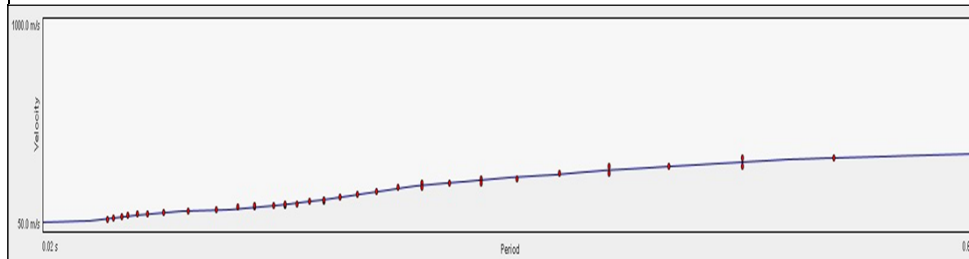
QUOTA: 22 m slm

OPERATORI: Dr. Arbizzi - Mazzetti M.

Spettro di potenza



Curva di dispersione

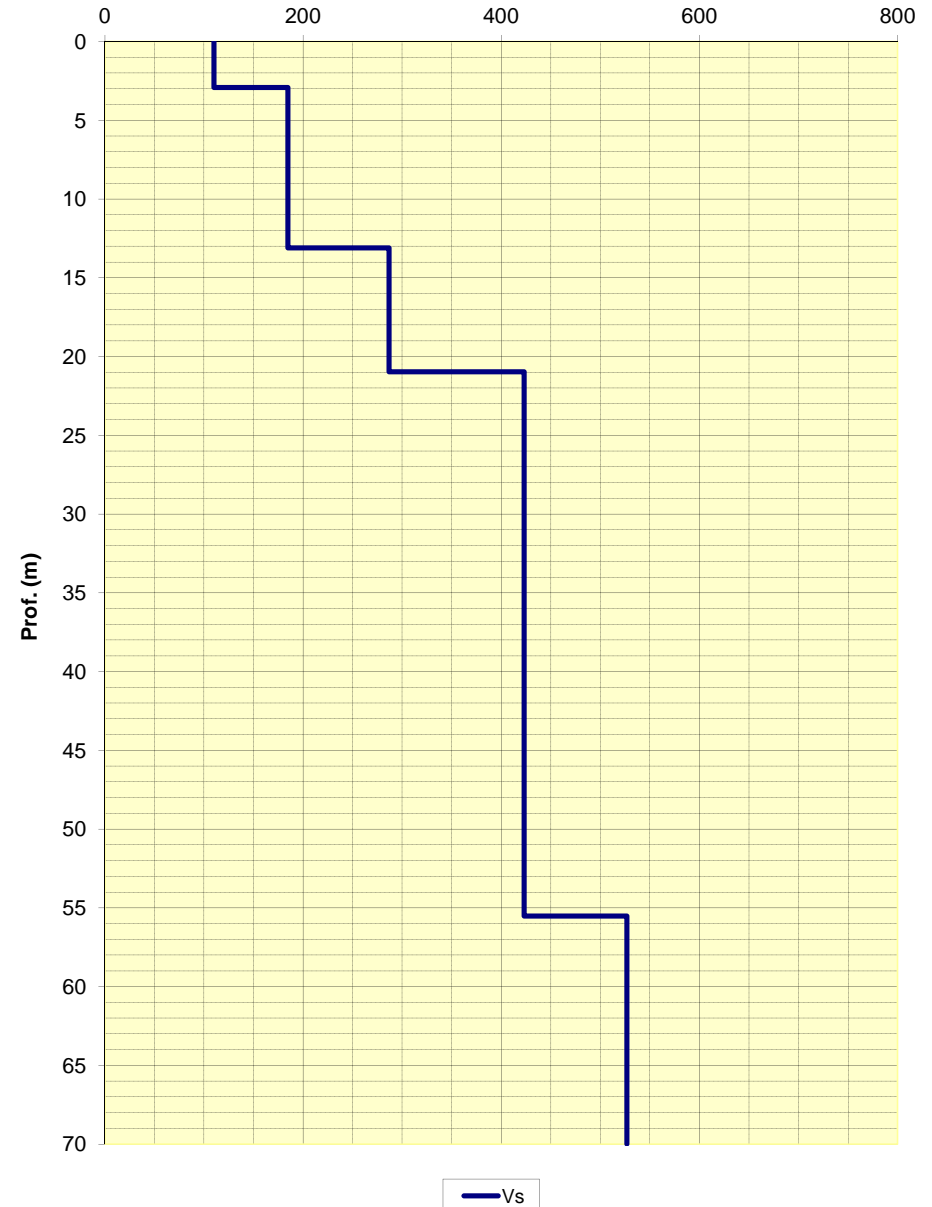


Note:

Modello interpretativo

Strato n°	Prof. (m)	Spess. (m)	Vs (m/s)
1	0	2,9	110
2	2,9	13,1	185
3	13,1	21	285
4	21	55,5	425
5	55,5	INF	525
6			
7			
8			
9			
10			

**Modello interpretativo
profilo Vs (m/s)**



STUDIO GEOLOGICO CENTROGEO
P.zza S. Quirino, 6 - 42015 CORREGGIO

**INDAGINE Re.Mi.
N° 04**

LOCALITA': Rio Saliceto (RE)

COMMITTENTE: Amm. Comunale

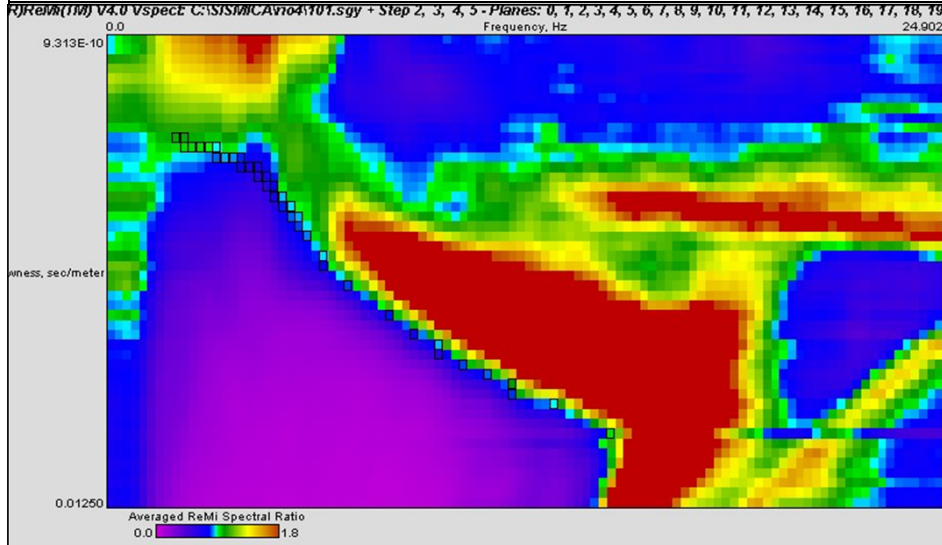
DATA: 23-09-2008

CANTIERE: PSC 2008

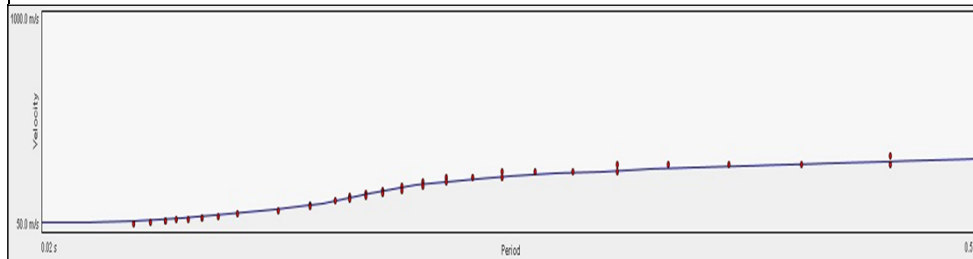
QUOTA: 23 m slm

OPERATORI: Dr. Arbizzi - Mazzetti M.

Spettro di potenza



Curva di dispersione

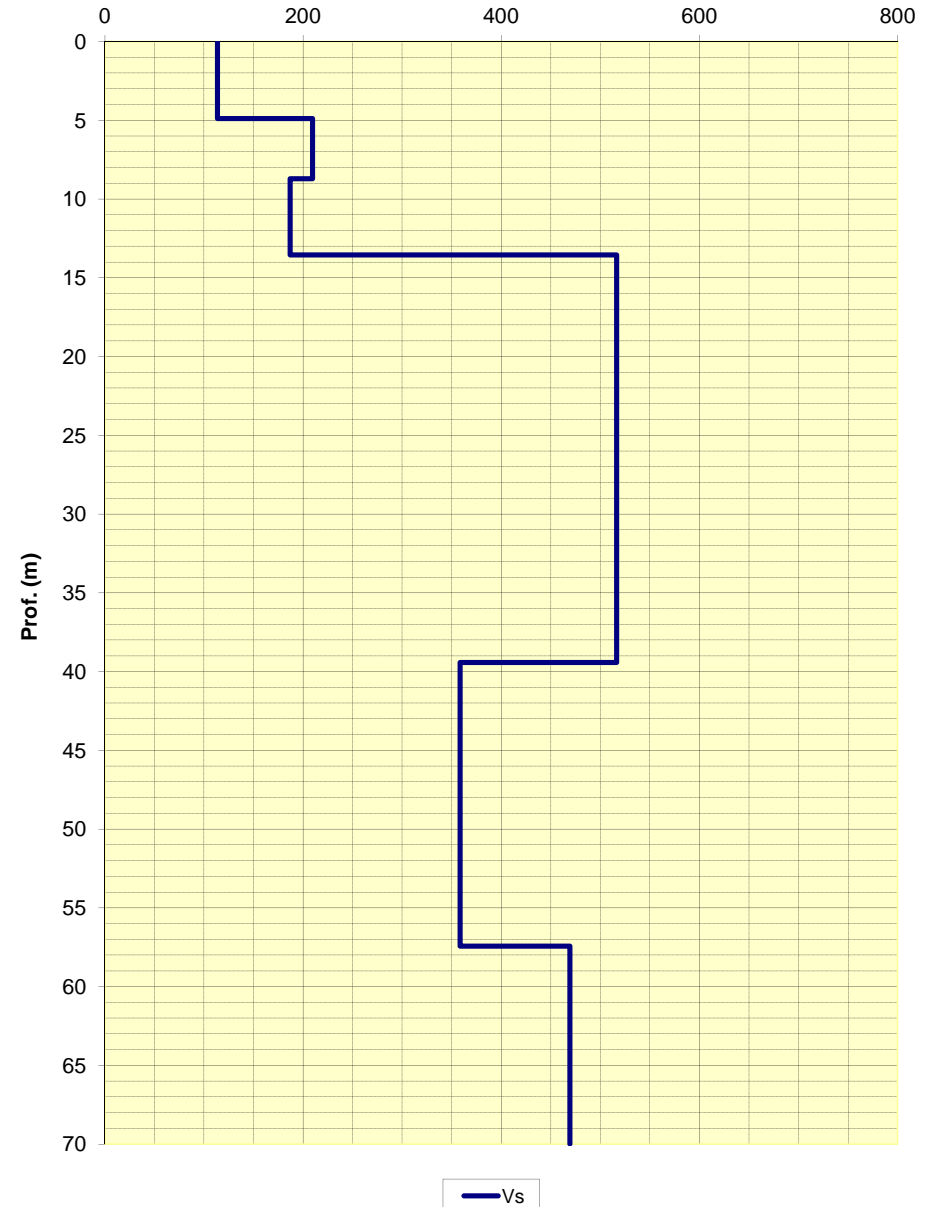


Note:

Modello interpretativo

Strato n°	Prof. (m)	Spess. (m)	Vs (m/s)
1	0	4,9	115
2	4,9	8,7	210
3	8,7	13,6	185
4	13,6	39,4	515
5	39,4	57,4	360
6	57,4	INF	470
7			
8			
9			
10			

**Modello interpretativo
profilo Vs (m/s)**

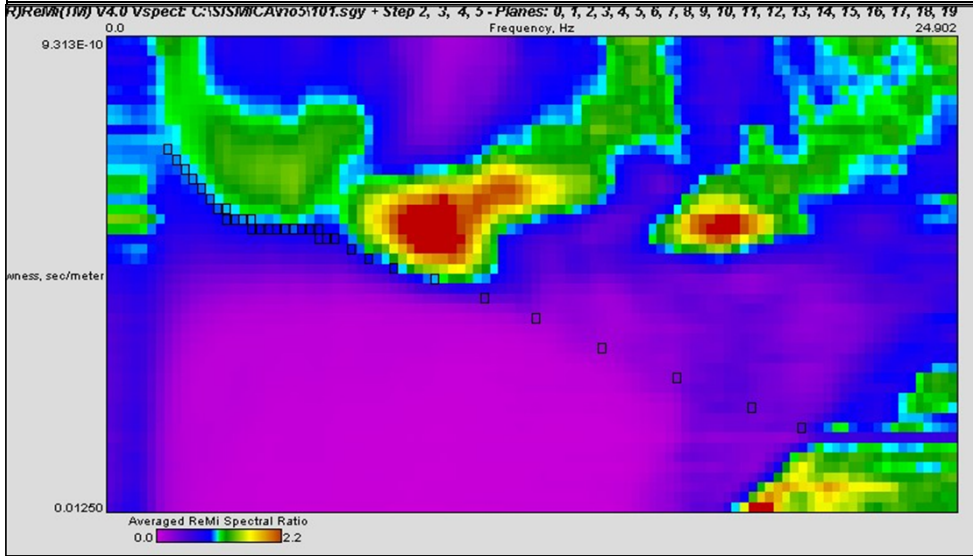


STUDIO GEOLOGICO CENTROGEO
P.zza S. Quirino, 6 - 42015 CORREGGIO

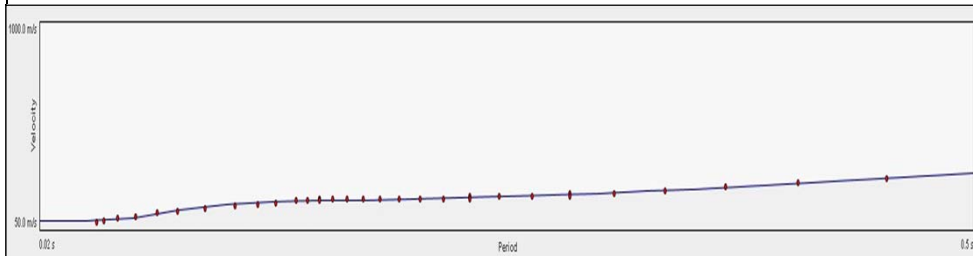
INDAGINE Re.Mi.
N° 05

LOCALITA': Rio Saliceto (RE) COMMITTENTE: Amm. Comunale
 DATA: 23-09-2008 CANTIERE: PSC 2008
 QUOTA: 23 m slm OPERATORI: Dr. Arbizzi - Mazzetti M.

Spettro di potenza



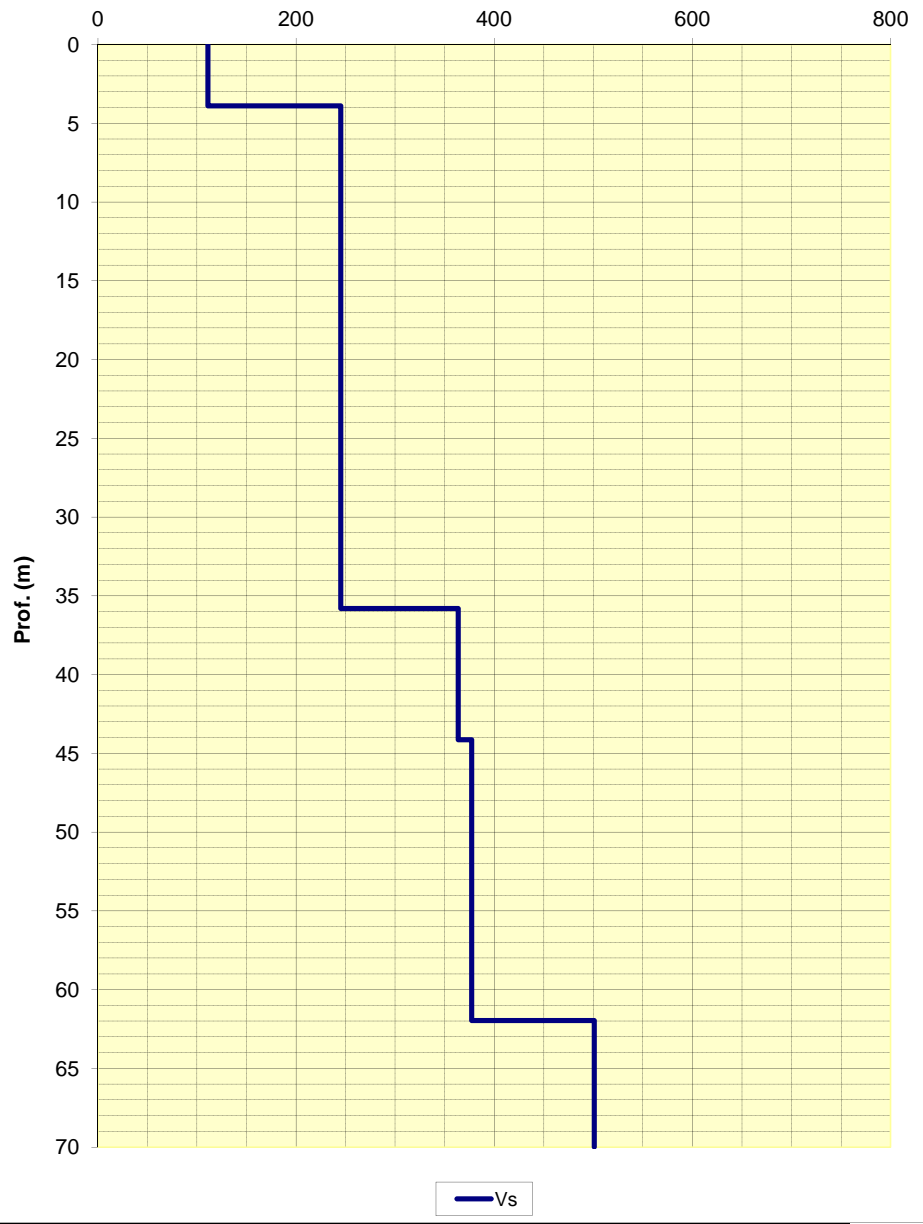
Curva di dispersione



Note:

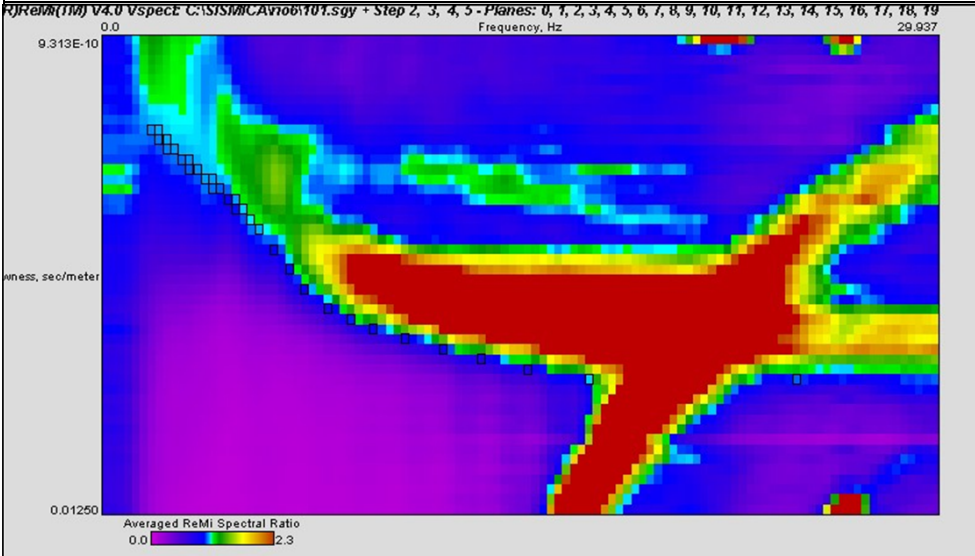
Modello interpretativo				
Strato n°	Prof. (m)		Spess. (m)	Vs (m/s)
1	0	3,9	3,9	110
2	3,9	35,8	31,9	245
3	35,8	44,1	8,3	365
4	44,1	62	17,9	380
5	62	INF	INF	500
6				
7				
8				
9				
10				

Modello interpretativo
profilo Vs (m/s)

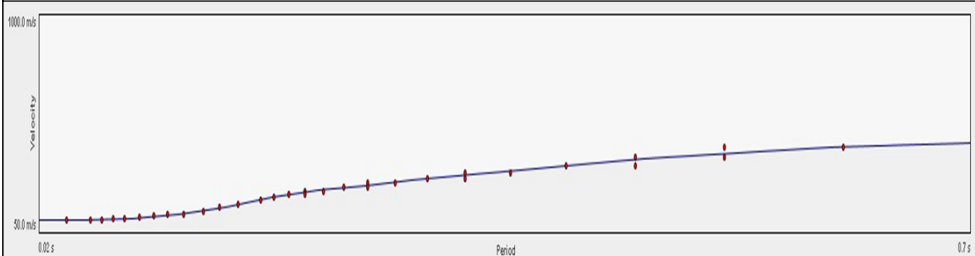


LOCALITA': Rio Saliceto (RE)	COMMITTENTE: Amm. Comunale
DATA: 23-09-2008	CANTIERE: PSC 2008
QUOTA: - m slm	OPERATORI: Dr. Arbizzi - Mazzetti M.

Spettro di potenza



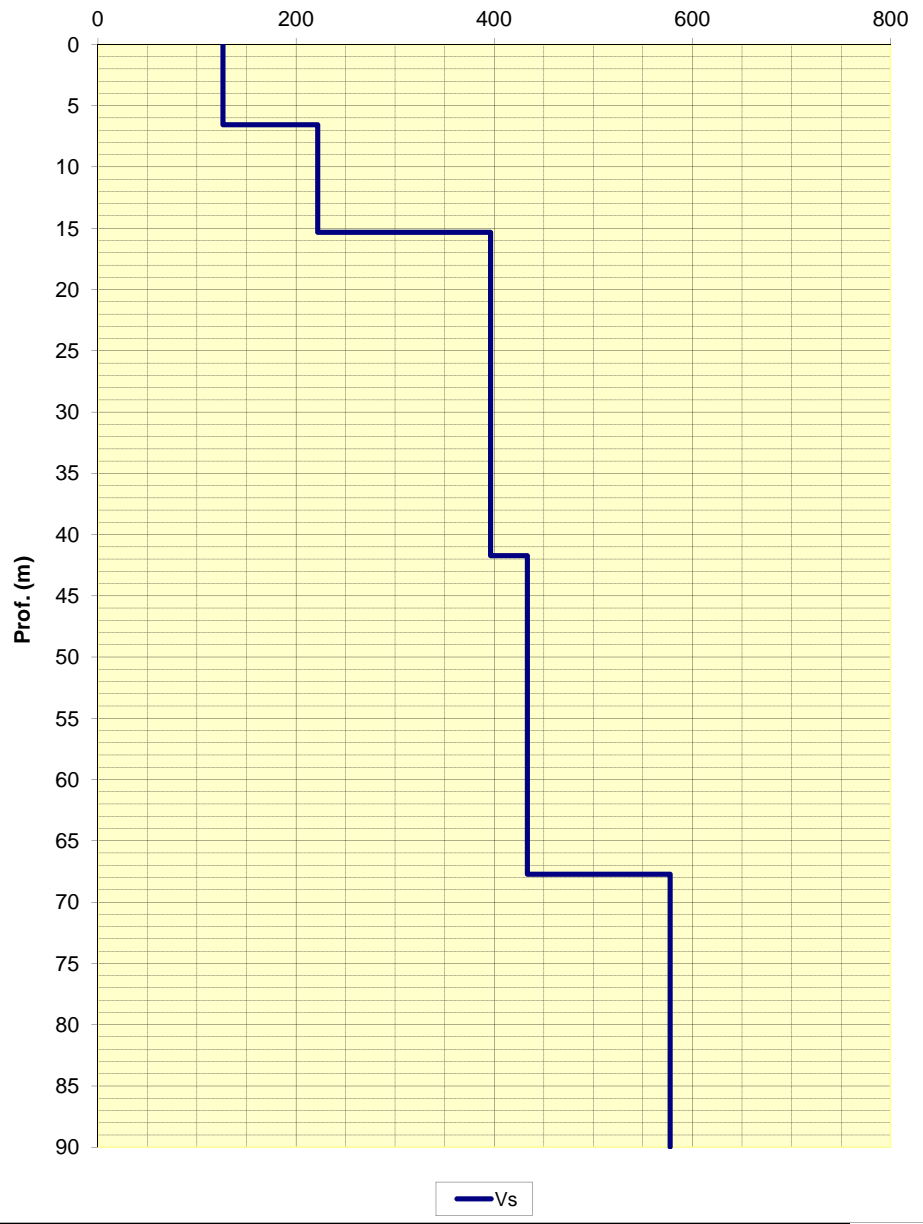
Curva di dispersione



Note:

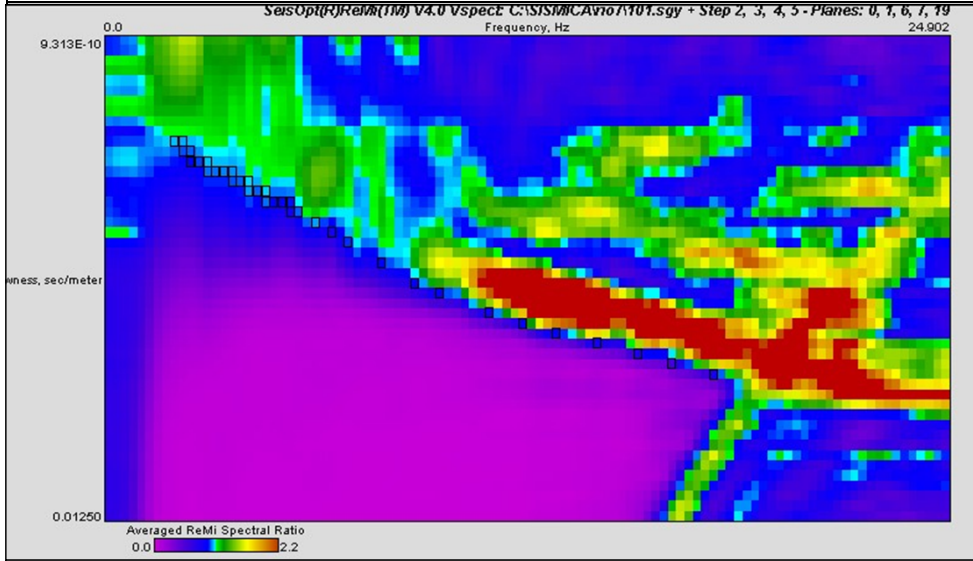
Modello interpretativo				
Strato n°	Prof. (m)		Spess. (m)	Vs (m/s)
1	0	6,5	6,5	125
2	6,5	15,3	8,8	220
3	15,3	41,7	26,4	395
4	41,7	67,7	26	435
5	67,7	INF	INF	580
6				
7				
8				
9				
10				

Modello interpretativo
profilo Vs (m/s)

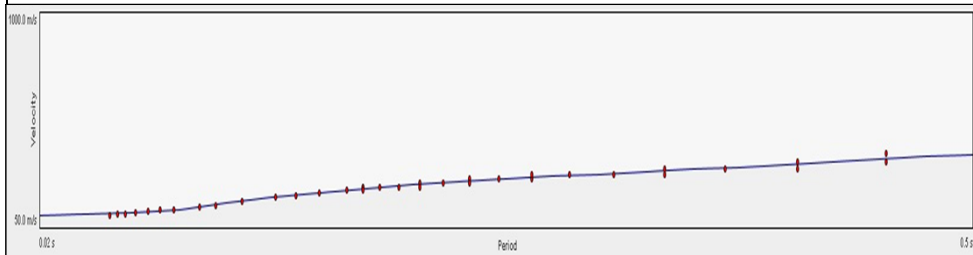


LOCALITA': Rio Saliceto (RE) COMMITTENTE: Amm. Comunale
 DATA: 23-09-2008 CANTIERE: PSC 2008
 QUOTA: 25 m slm OPERATORI: Dr. Arbizzi - Mazzetti M.

Spettro di potenza



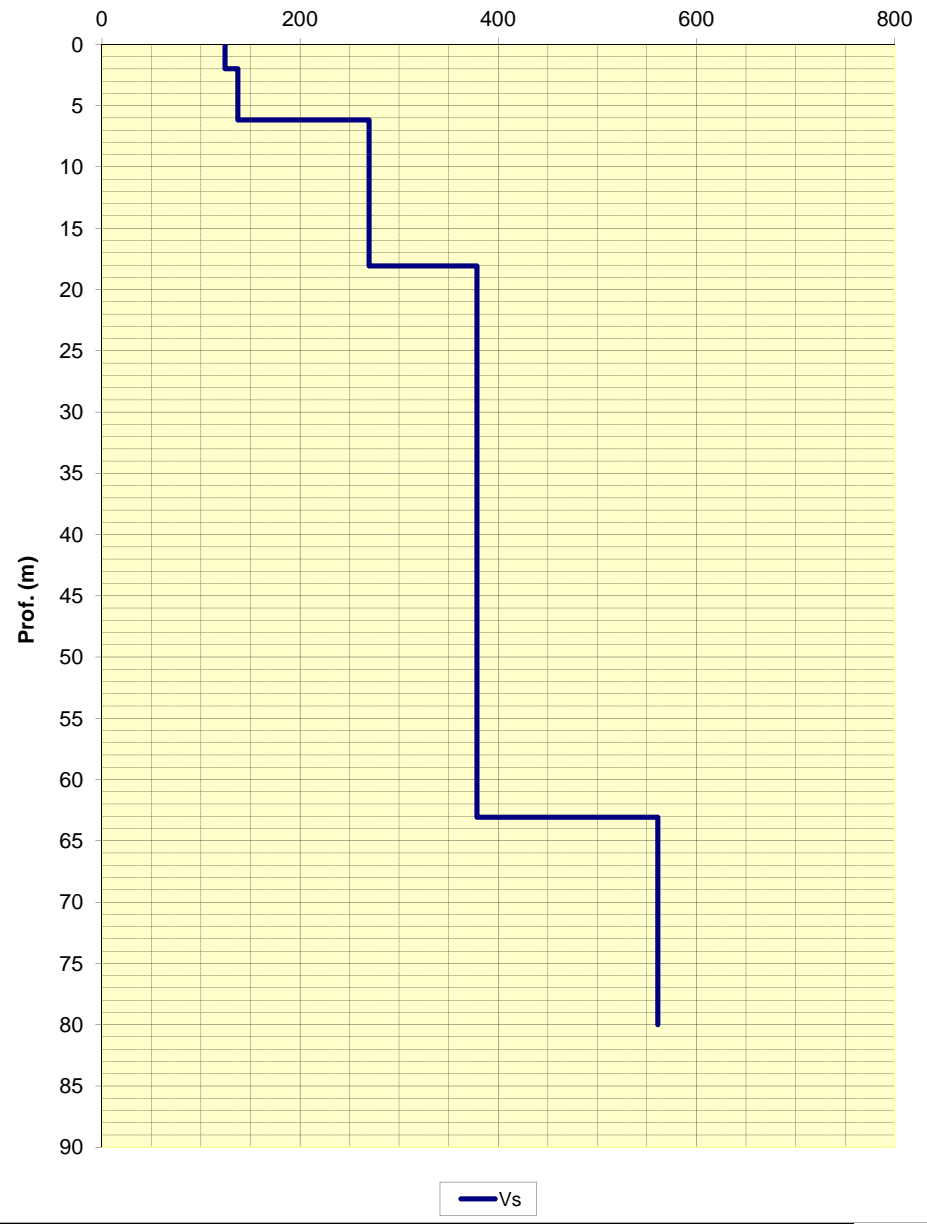
Curva di dispersione



Note:

Modello interpretativo				
Strato n°	Prof. (m)	Spess. (m)	Vs (m/s)	
1	0	2	2	125
2	2	6,2	4,2	135
3	6,2	18,1	11,9	270
4	18,1	63,1	45	380
5	63,1	INF	INF	560
6				
7				
8				
9				
10				

Modello interpretativo
profilo Vs (m/s)



STUDIO GEOLOGICO CENTROGEO
P.zza S. Quirino, 6 - 42015 CORREGGIO

**INDAGINE Re.Mi.
N° 08**

LOCALITA': Rio Saliceto (RE)

COMMITTENTE: Amm. Comunale

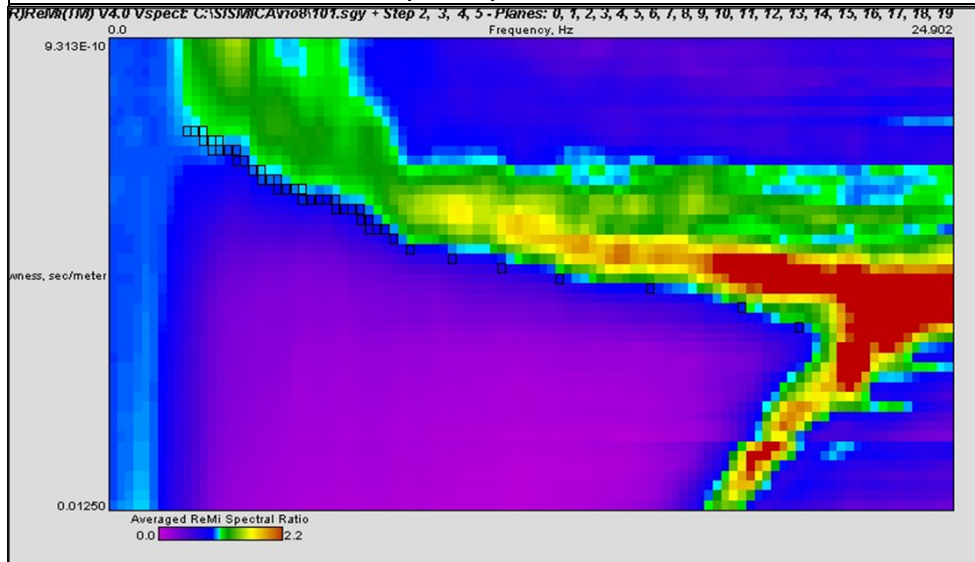
DATA: 23-09-2008

CANTIERE: PSC 2008

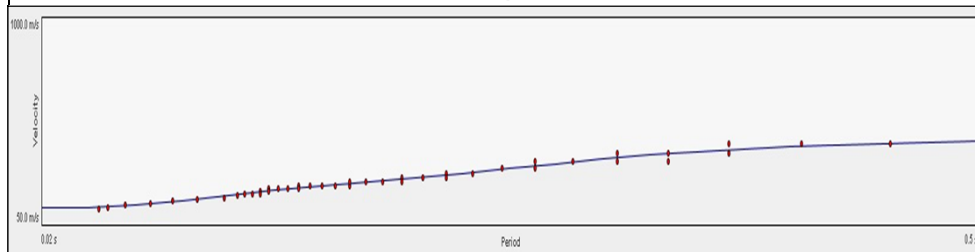
QUOTA: 25 m slm

OPERATORI: Dr. Arbizzi - Mazzetti M.

Spettro di potenza



Curva di dispersione

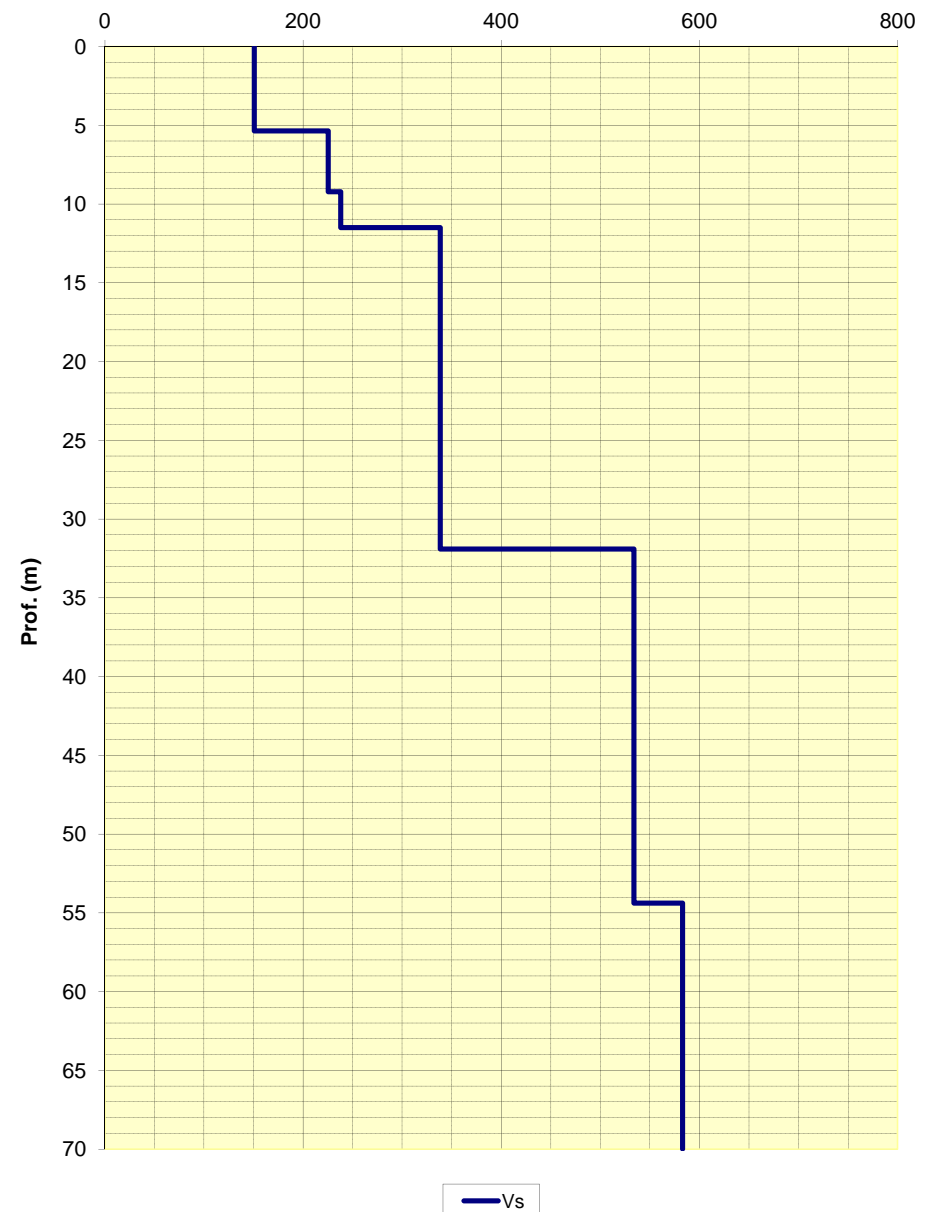


Note:

Modello interpretativo

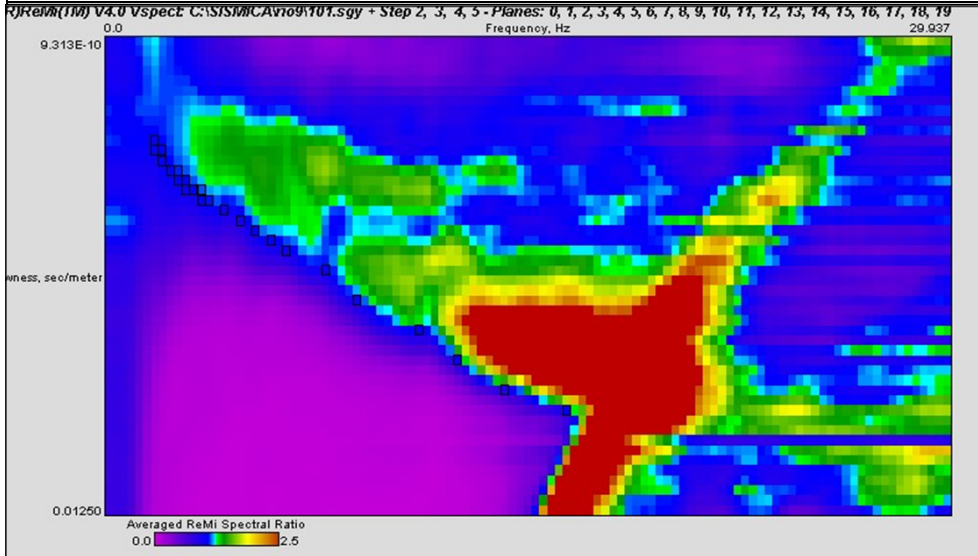
Strato n°	Prof. (m)	Spess. (m)	Vs (m/s)
1	0	5,4	150
2	5,4	9,2	225
3	9,2	11,5	240
4	11,5	31,9	340
5	31,9	54,4	530
6	54,4	INF	580
7			
8			
9			
10			

**Modello interpretativo
profilo Vs (m/s)**

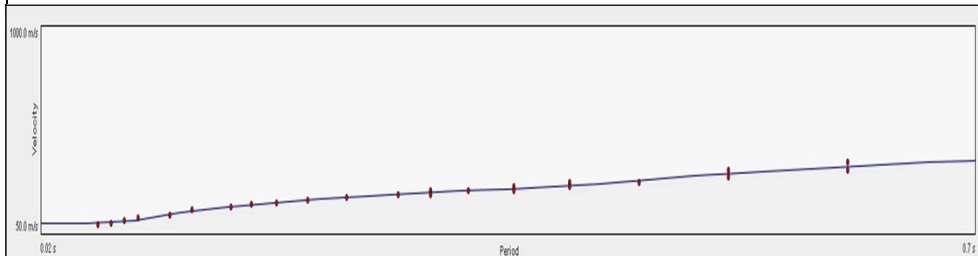


LOCALITA': Rio Saliceto (RE) COMMITTENTE: Amm. Comunale
 DATA: 23-09-2008 CANTIERE: PSC 2008
 QUOTA: - m slm OPERATORI: Dr. Arbizzi - Mazzetti M.

Spettro di potenza



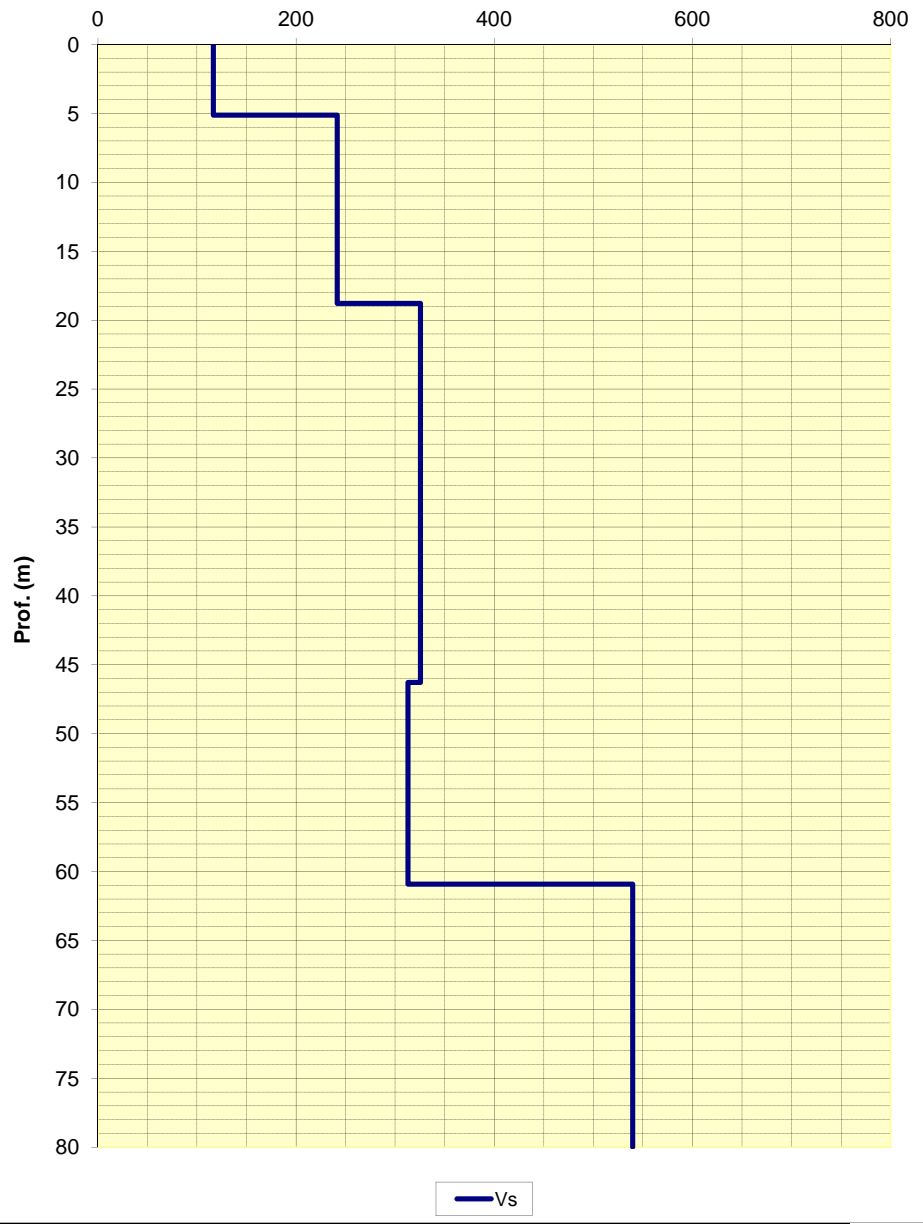
Curva di dispersione



Note:

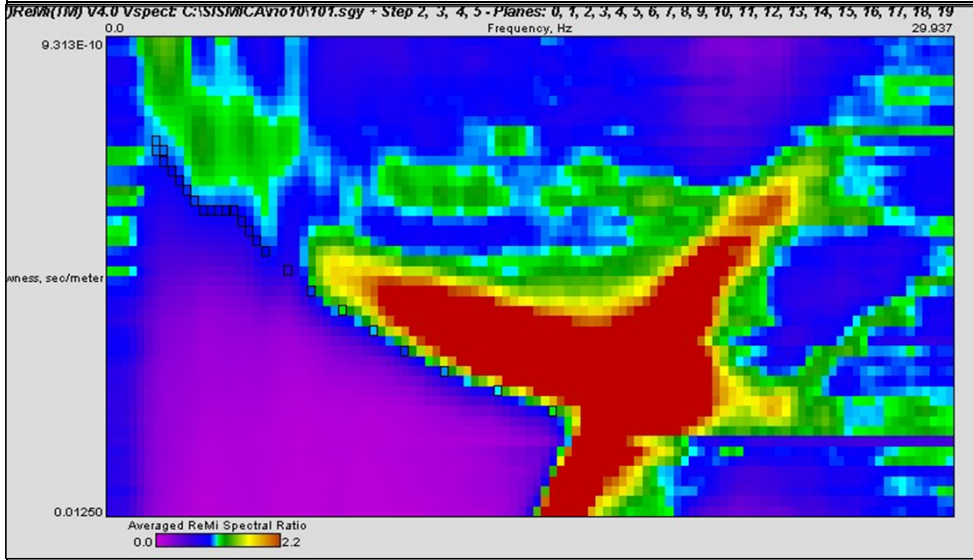
Modello interpretativo				
Strato n°	Prof. (m)		Spess. (m)	Vs (m/s)
1	0	5,1	5,1	115
2	5,1	18,8	13,7	240
3	18,8	46,3	27,5	325
4	46,3	60,9	14,6	315
5	60,9	INF	INF	540
6				
7				
8				
9				
10				

Modello interpretativo
profilo Vs (m/s)

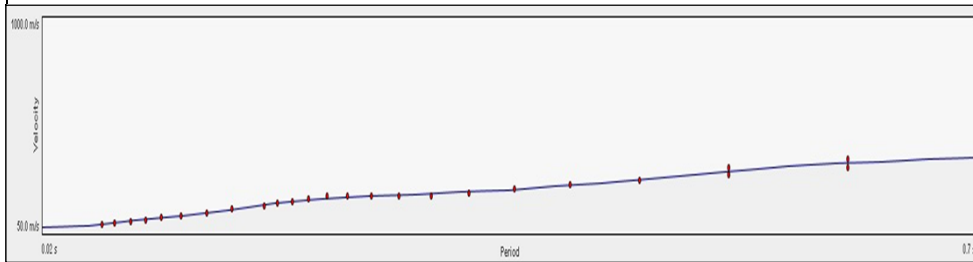


LOCALITA': Rio Saliceto (RE) COMMITTENTE: Amm. Comunale
 DATA: 23-09-2008 CANTIERE: PSC 2008
 QUOTA: - m slm OPERATORI: Dr. Arbizzi - Mazzetti M.

Spettro di potenza



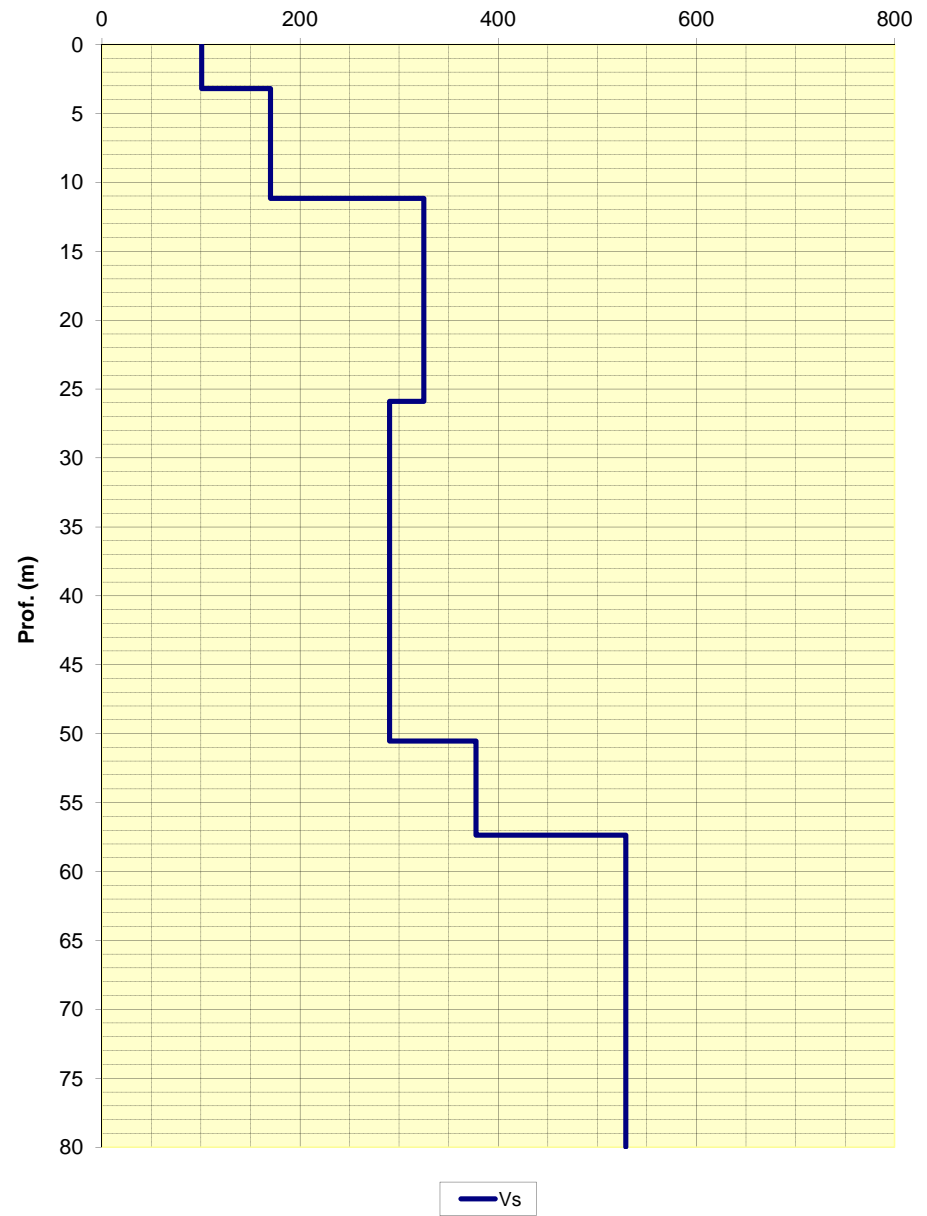
Curva di dispersione



Note:

Modello interpretativo				
Strato n°	Prof. (m)	Spess. (m)	Vs (m/s)	
1	0	3,2	3,2	100
2	3,2	11,2	8	170
3	11,2	25,9	14,7	325
4	25,9	50,5	24,6	290
5	50,5	57,4	6,9	380
6	57,4	INF	INF	530
7				
8				
9				
10				

Modello interpretativo
profilo Vs (m/s)



STUDIO GEOLOGICO CENTROGEO
P.zza S. Quirino, 6 - 42015 CORREGGIO

**INDAGINE MASW/Re.Mi.
R11**

LOCALITA': Rio Saliceto (RE)

COMMITTENTE: Amm. Comunale

DATA: 07-01-2014

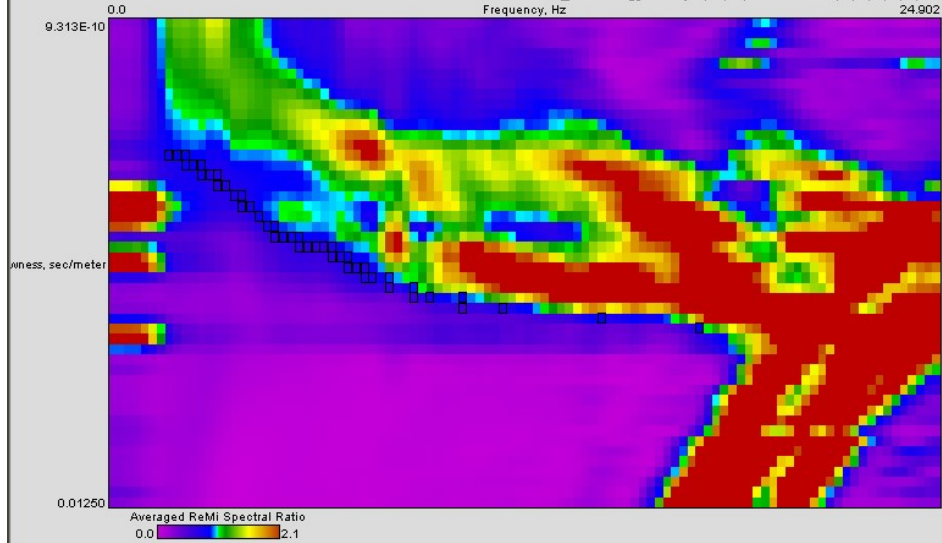
CANTIERE: Microzonazione Sismica PSC

QUOTA: 22 m slm

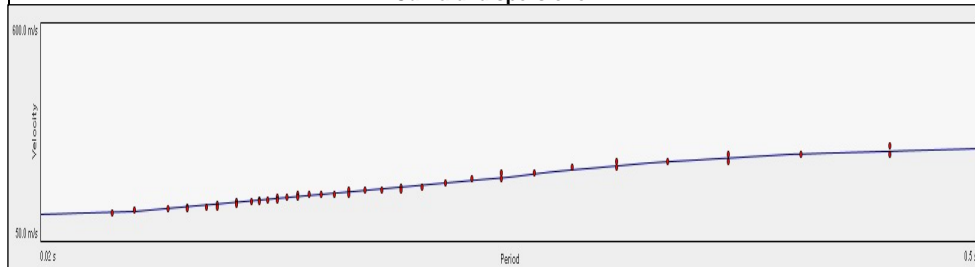
OPERATORI: Dr. Arbizzi - Mazzetti M.

Spettro di potenza

PROIEZIONI 2013 R11 - MICROZONAZIONE 2013 RE.MI - FIVSR/2013/05 - Rio Saliceto - 11/10/1.Sgy + Step 2, 3, 4, 5 - Planes: 1, 2, 3, 4, 5, 6, 7, 9



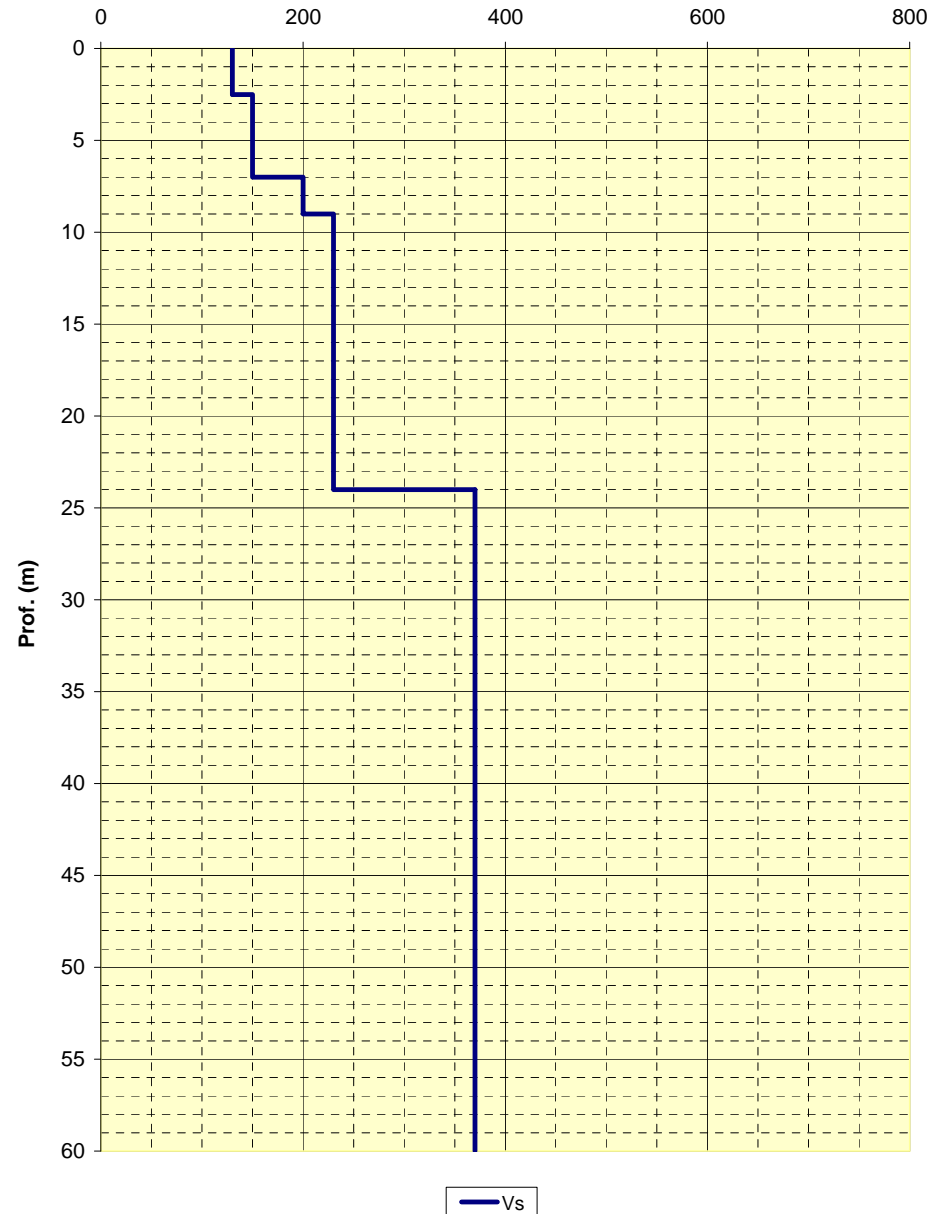
Curva di dispersione



Modello interpretativo

Strato n°	Prof. (m)	Spess. (m)	Vs (m/s)
1	0	2.5	130
2	2.5	7	150
3	7	9	200
4	9	24	230
5	24	INF	370
6			
7			
8			
9			
10			

**Modello interpretativo
profilo Vs (m/s)**



STUDIO GEOLOGICO CENTROGEO
P.zza S. Quirino, 6 - 42015 CORREGGIO

**INDAGINE MASW/Re.Mi.
R12**

LOCALITA': Rio Saliceto (RE)

COMMITTENTE: Amm. Comunale

DATA: 07-01-2014

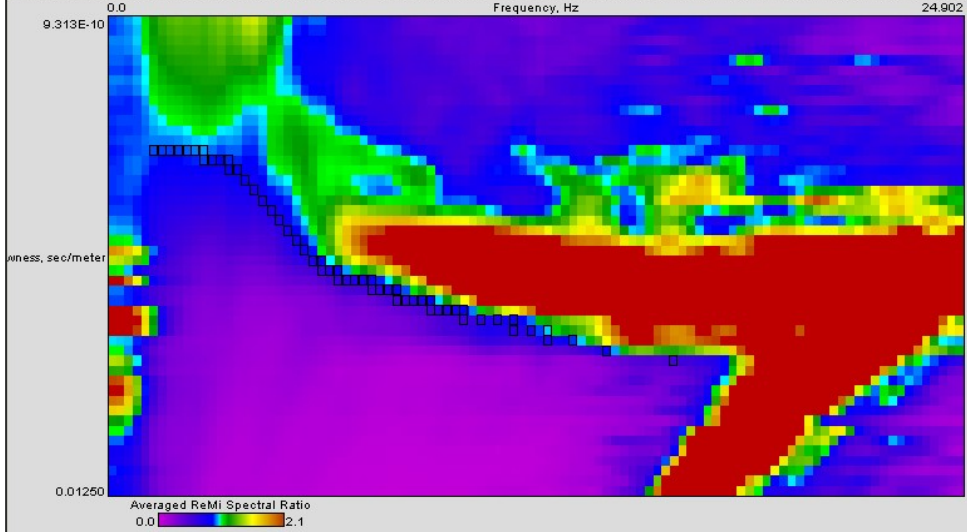
CANTIERE: Microzonazione Sismica PSC

QUOTA: 24 m slm

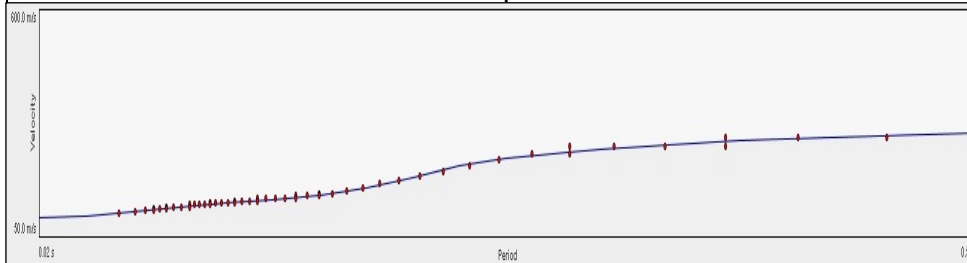
OPERATORI: Dr. Arbizzi - Mazzetti M.

Spettro di potenza

one 2013RE.MI-FVSR:2015vriosaliceto_12101.sgy + Step 2, 3, 4, 5 - Planes: 0, 1, 2, 3, 4, 5, 6, 7, 8, 9, 10, 11, 12, 13, 14, 15, 16, 17, 18, 19



Curva di dispersione

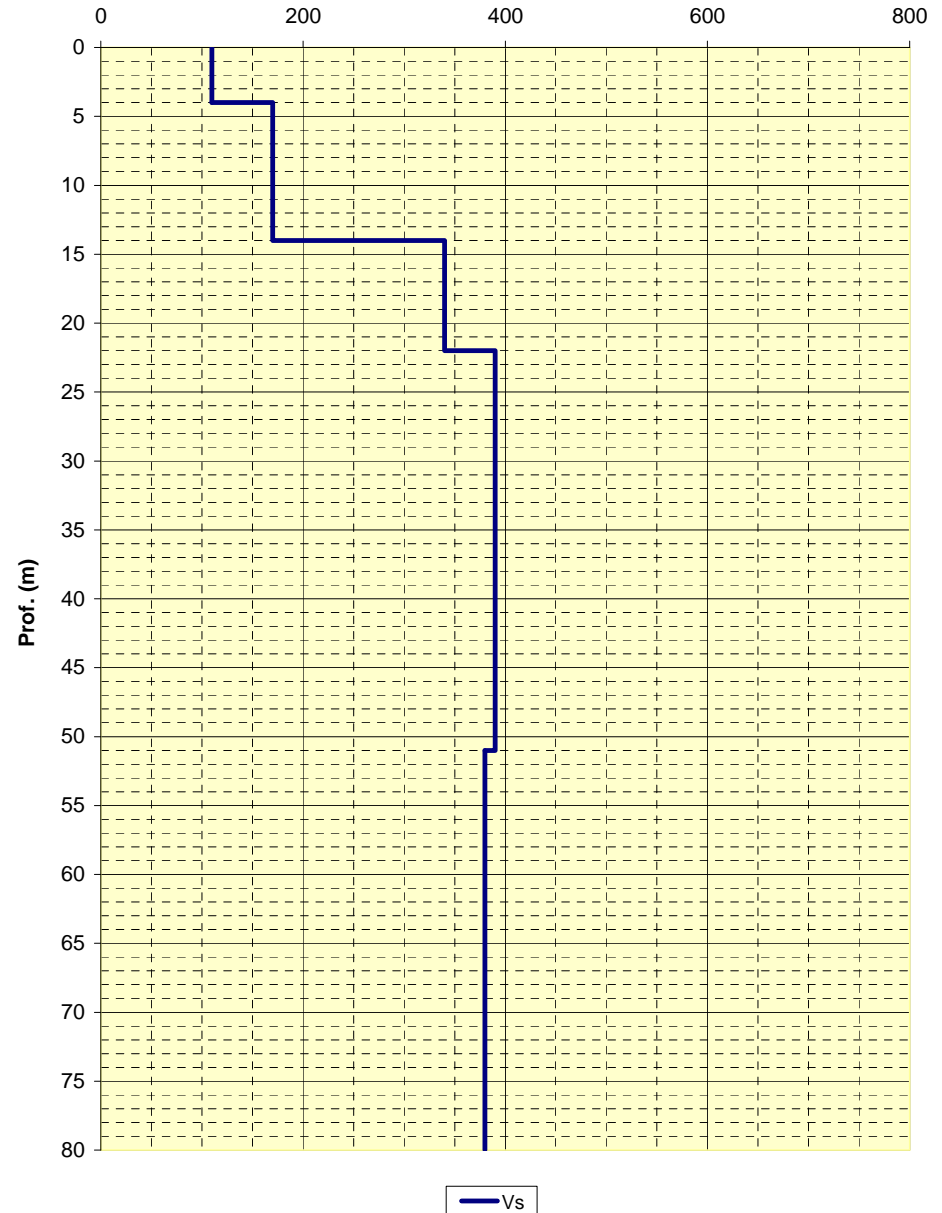


Note:

Modello interpretativo

Strato n°	Prof. (m)	Spess. (m)	Vs (m/s)
1	0	4	110
2	4	14	170
3	14	22	340
4	22	51	390
5	51	INF	380
6			
7			
8			
9			
10			

**Modello interpretativo
profilo Vs (m/s)**



STUDIO GEOLOGICO CENTROGEO
P.zza S. Quirino, 6 - 42015 CORREGGIO

**INDAGINE MASW/Re.Mi.
R13**

LOCALITA': Rio Saliceto (RE)

COMMITTENTE: Amm. Comunale

DATA: 07-01-2014

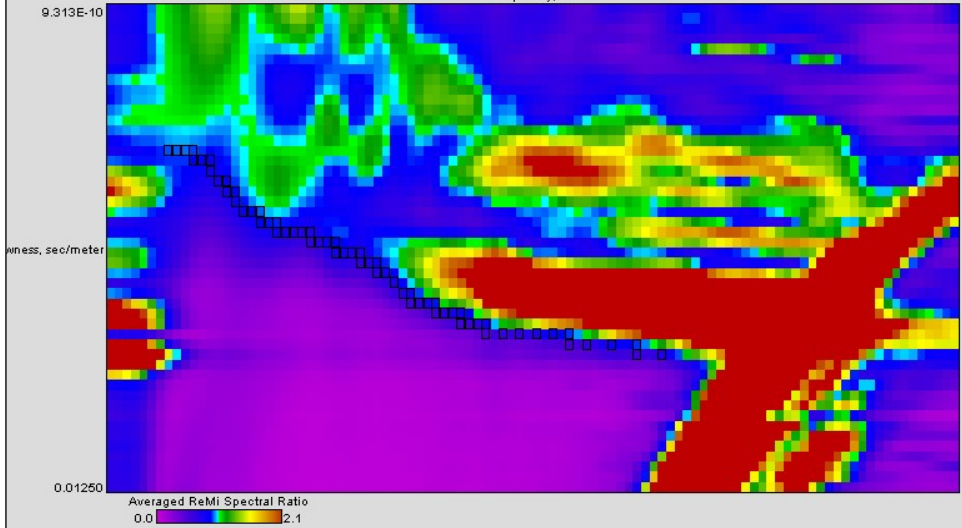
CANTIERE: Microzonazione Sismica PSC

QUOTA: 24 m slm

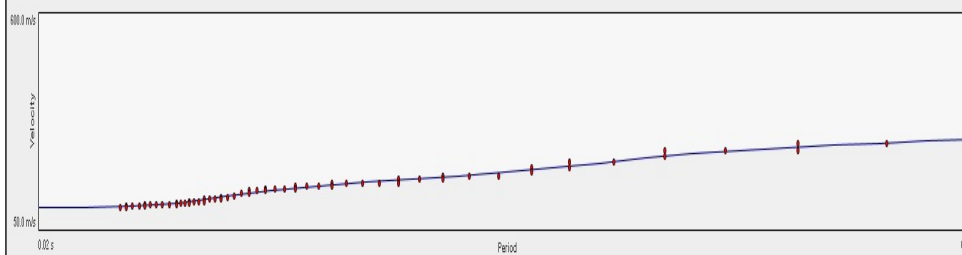
OPERATORI: Dr. Arbizzi - Mazzetti M.

Spettro di potenza

Line 2013REMI-FVSR2013R13Riosalicio_131101.Sgy + Step 2, 3, 4, 5 - Planes: 0, 1, 2, 3, 4, 5, 6, 7, 8, 9, 10, 11, 12, 13, 14, 15, 16, 17, 18, 19



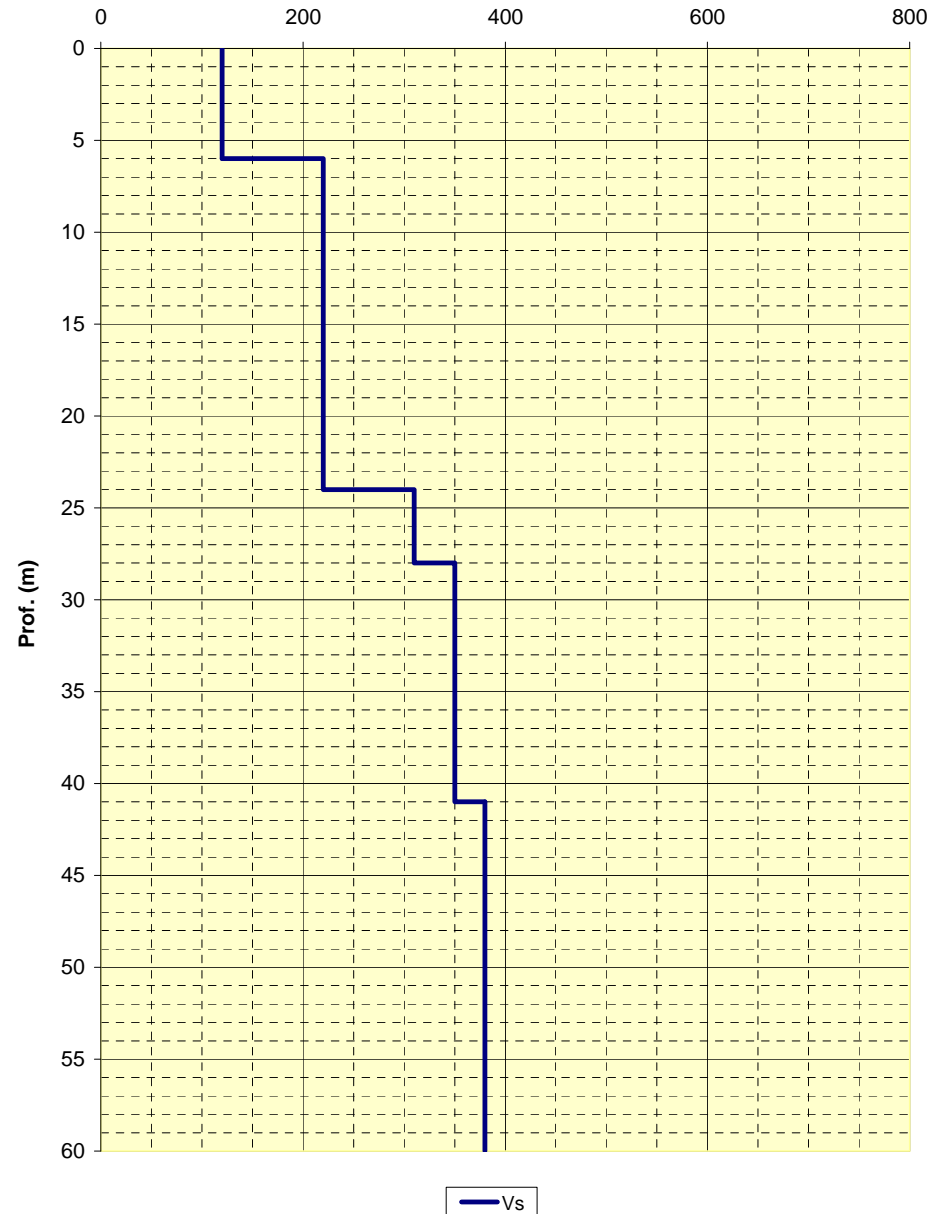
Curva di dispersione



Modello interpretativo

Strato n°	Prof. (m)	Spess. (m)	Vs (m/s)
1	0 - 6	6	120
2	6 - 24	18	220
3	24 - 28	4	310
4	28 - 41	13	350
5	41 - INF	INF	380
6			
7			
8			
9			
10			

**Modello interpretativo
profilo Vs (m/s)**



STUDIO GEOLOGICO CENTROGEO
P.zza S.Quirino, 6 - 42015 CORREGGIO

**INDAGINE MASW/Re.Mi.
R14**

LOCALITA': Rio Saliceto (RE)

COMMITTENTE: Amm. Comunale

DATA: 07-01-2014

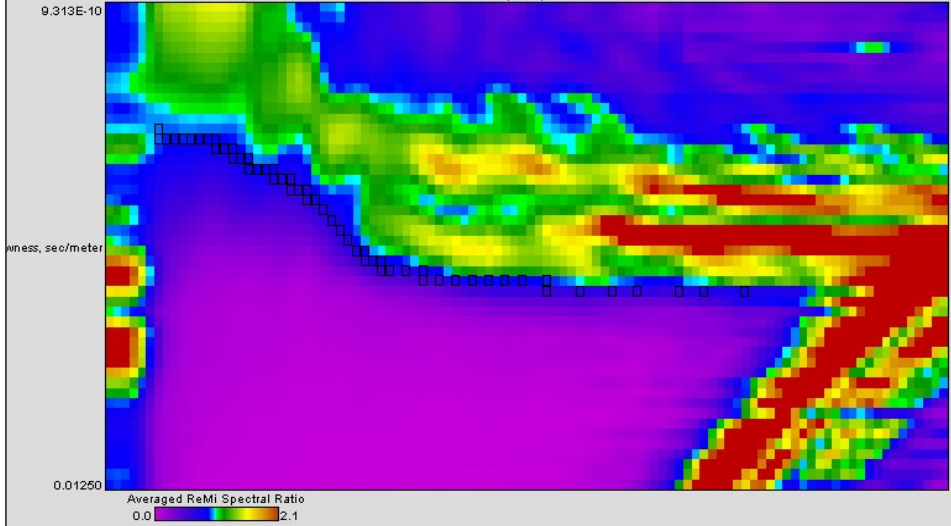
CANTIERE: Microzonazione Sismica PSC

QUOTA: 24 m slm

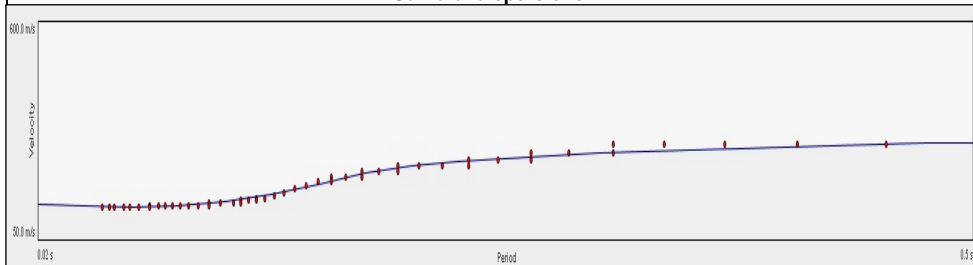
OPERATORI: Dr. Arbizzi - Mazzetti M.

Spettro di potenza

2013RE.MI-HVSR\2015nosalceto_14\101.sgy + Step 2_3_4_5 - Planes: 0, 1, 2, 3, 4, 5, 6, 7, 8, 9, 10, 11, 12, 13, 14, 15, 16, 17, 18, 19, 20
0.0 Frequency, Hz 24.902



Curva di dispersione

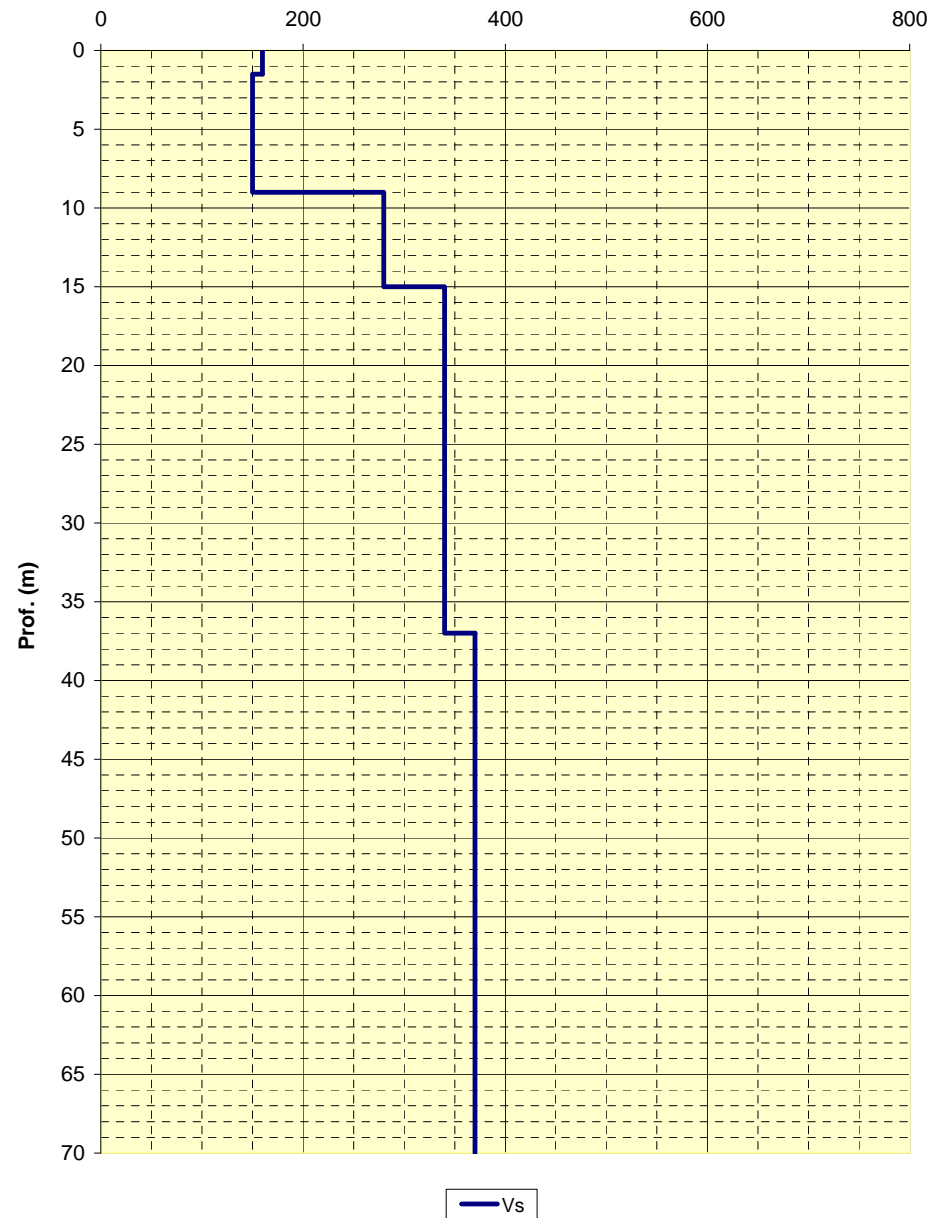


Note:

Modello interpretativo

Strato n°	Prof. (m)	Spess. (m)	Vs (m/s)
1	0	1.5	160
2	1.5	9	150
3	9	15	280
4	15	37	340
5	37	INF	370
6			
7			
8			
9			
10			

**Modello interpretativo
profilo Vs (m/s)**



STUDIO GEOLOGICO CENTROGEO
P.zza S. Quirino, 6 - 42015 CORREGGIO

**INDAGINE MASW/Re.Mi.
R15**

LOCALITA': Rio Saliceto (RE)

COMMITTENTE: Amm. Comunale

DATA: 07-01-2014

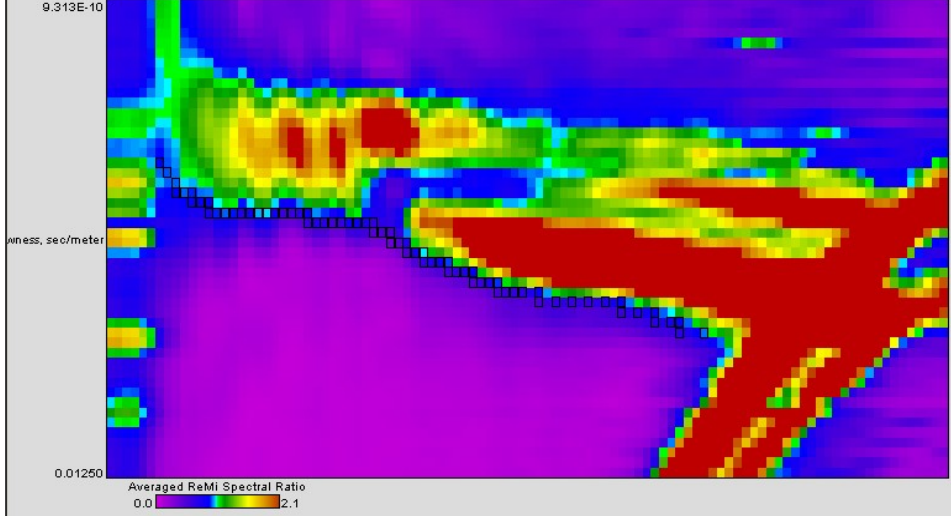
CANTIERE: Microzonazione Sismica PSC

QUOTA: 22 m slm

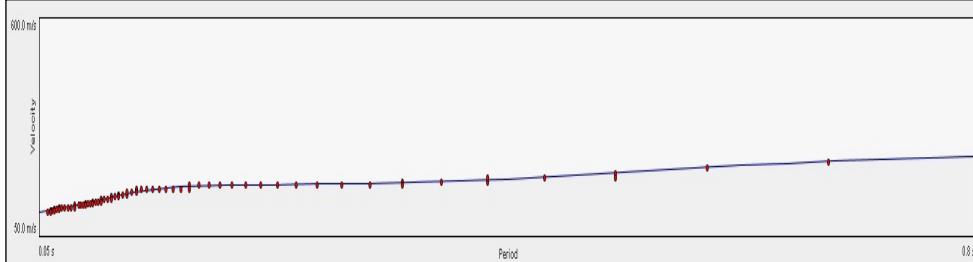
OPERATORI: Dr. Arbizzi - Mazzetti M.

Spettro di potenza

one 2013\REMI-HVSR\2015\riosaliceto_15\101.sgy + Step 2, 3, 4, 5 - Planes: 0, 1, 2, 3, 4, 5, 6, 7, 8, 9, 10, 11, 12, 13, 14, 15, 16, 17, 18, 19
Frequency, Hz 24.902



Curva di dispersione

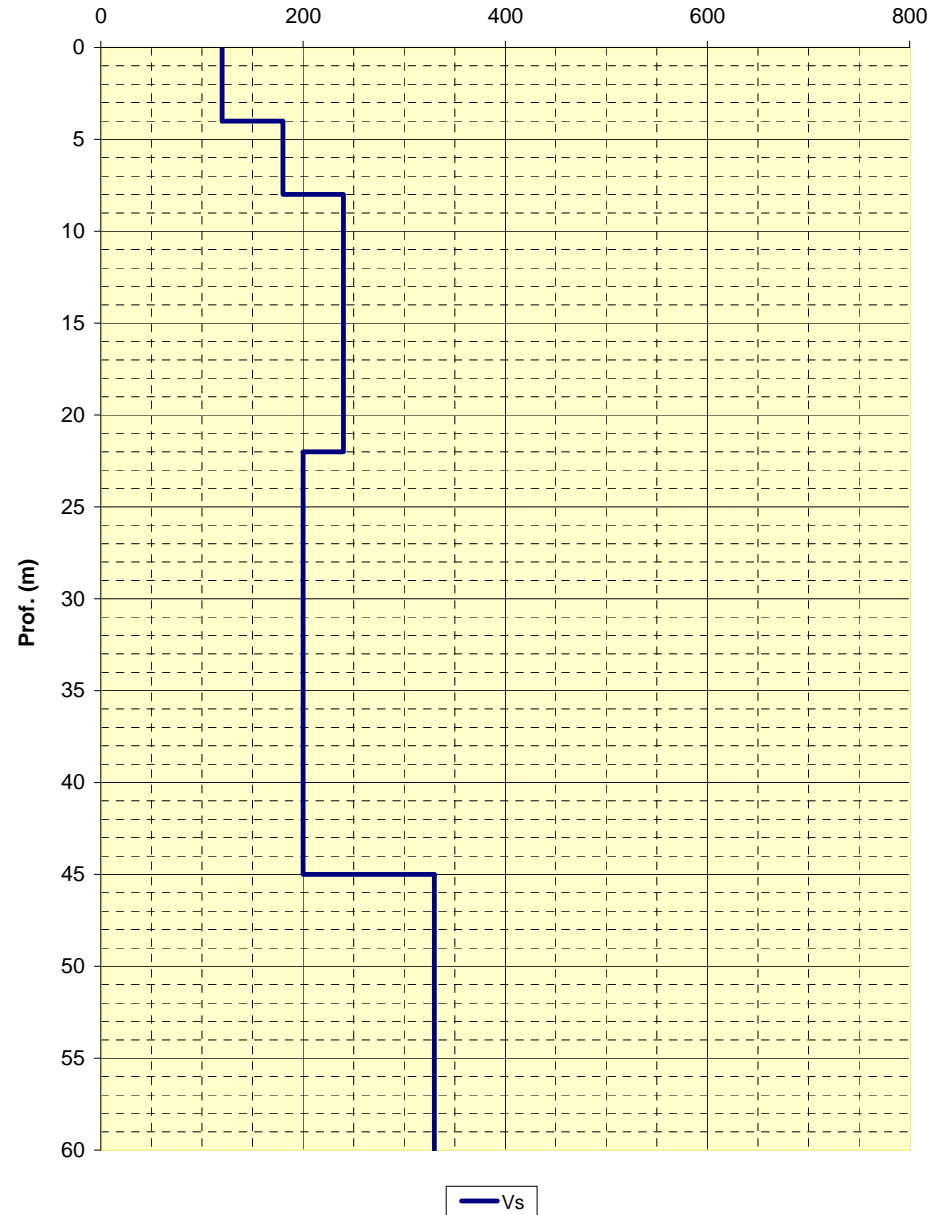


Modello interpretativo

Strato n°	Prof. (m)	Spess. (m)	Vs (m/s)
1	0	4	120
2	4	8	180
3	8	22	240
4	22	45	200
5	45	INF	330
6			
7			
8			
9			
10			

Note:

**Modello interpretativo
profilo Vs (m/s)**



INDAGINI HVSR

CENTROGEO SURVEY SNC

42015 Correggio (RE) - Piazza S. Quirino, 6 - tel 0522/641001 - Fax: 632162

STUDIO GEOLOGICO CENTROGEO
P.zza S.Quirino, 6 - 42015 CORREGGIO

INDAGINE HVSR H01

LOCALITA': Rio Saliceto (RE)

COMMITTENTE: Amm. Comunale

DATA: 29-09-2008

CANTIERE: Ca Magnanini

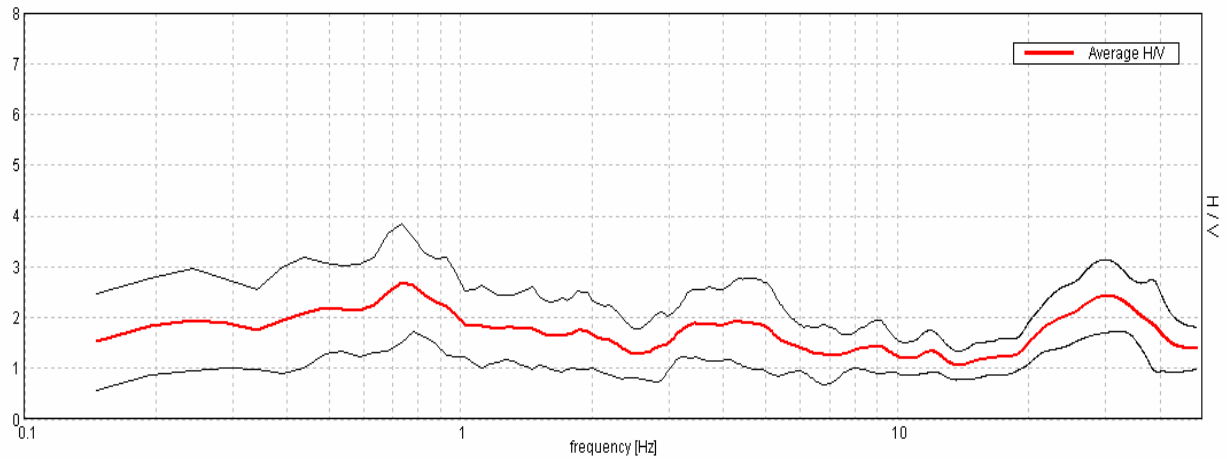
QUOTA: 23 m s.l.m.

OPERATORI: Dr. Arbizzi - Mazzetti M.

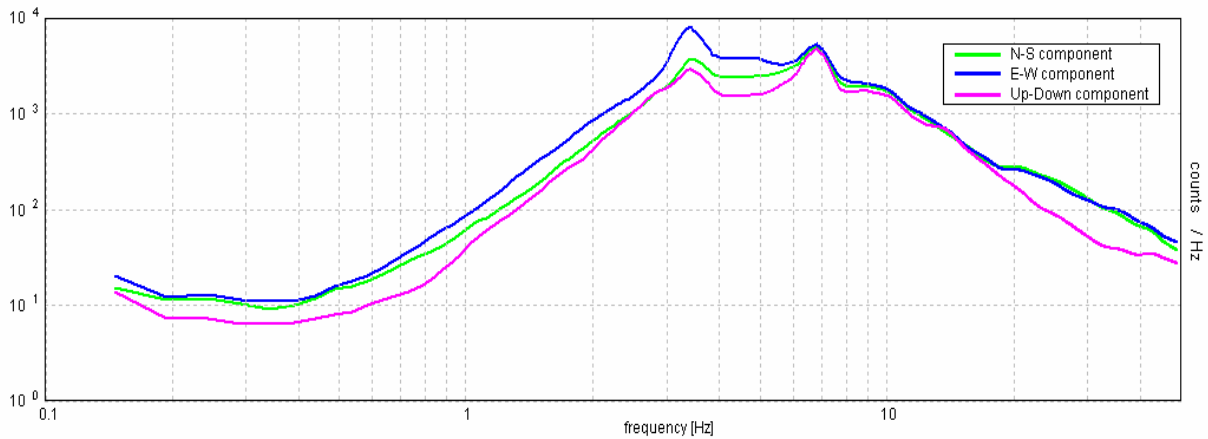
Strumentazione: Sara SR04 HS - 4,5 Hz - matricola N488

Rapporto spettrale

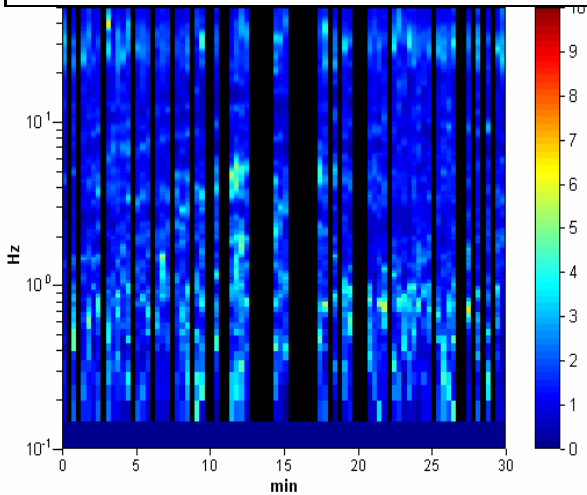
Max. HVV at 0.73 ± 0.49 Hz. (In the range 0.0 - 18.0 Hz).



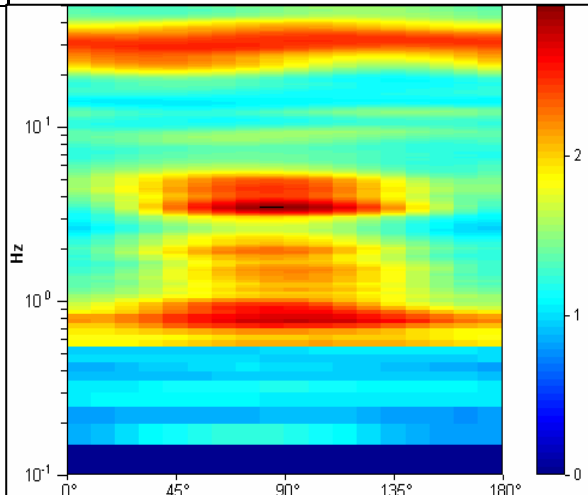
Ampiezza spettrale



Stabilità



Direzionalità



STUDIO GEOLOGICO CENTROGEO
P.zza S.Quirino, 6 - 42015 CORREGGIO

INDAGINE HVSR H02

LOCALITA': Rio Saliceto (RE)

COMMITTENTE: Amm. Comunale

DATA: 29-09-2008

CANTIERE: C.Gigliola

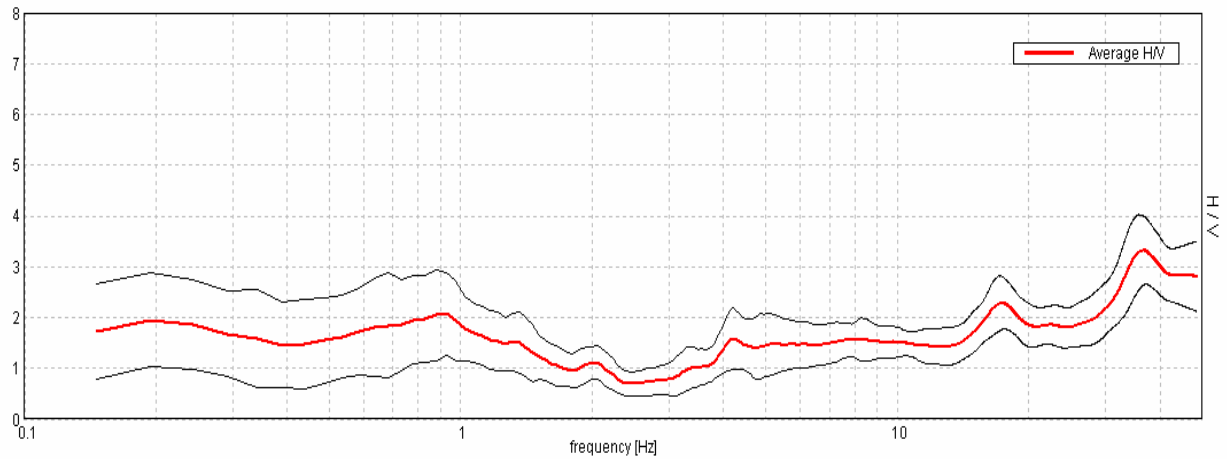
QUOTA: 22 m s.l.m.

OPERATORI: Dr. Arbizzi - Mazzetti M.

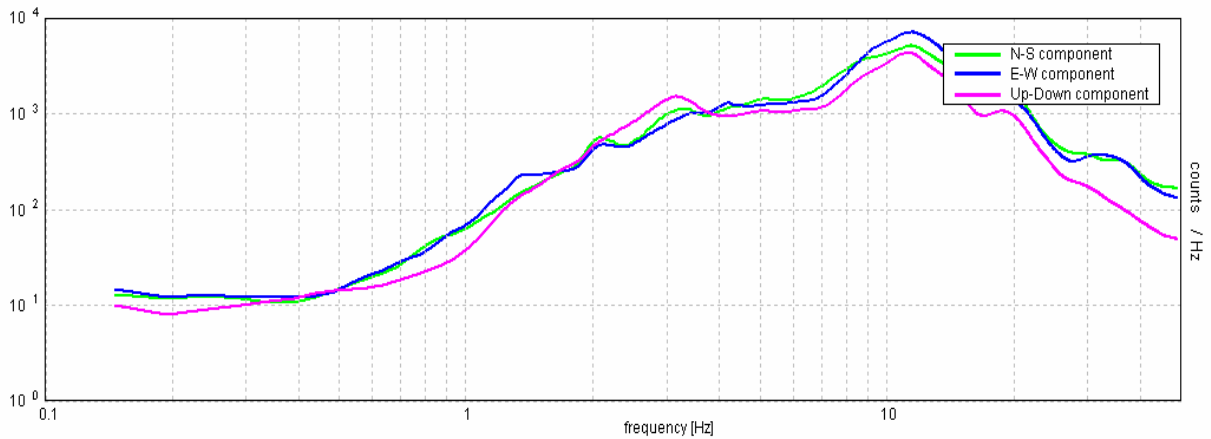
Strumentazione: Sara SR04 HS - 4,5 Hz - matricola N488

Rapporto spettrale

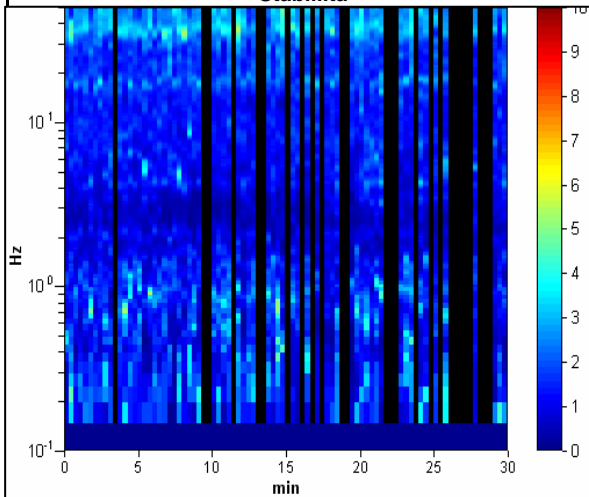
Max. HVV at 17.38 ± 3.7 Hz. (In the range 0.0 - 18.0 Hz).



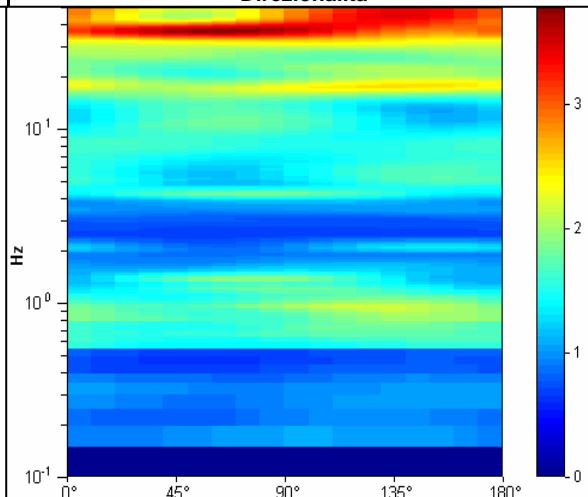
Ampiezza spettrale



Stabilità



Direzionalità



STUDIO GEOLOGICO CENTROGEO
P.zza S.Quirino, 6 - 42015 CORREGGIO

INDAGINE HVSR H03

LOCALITA': Rio Saliceto (RE)

COMMITTENTE: Amm. Comunale

DATA: 29-09-2008

CANTIERE: C.Tirelli

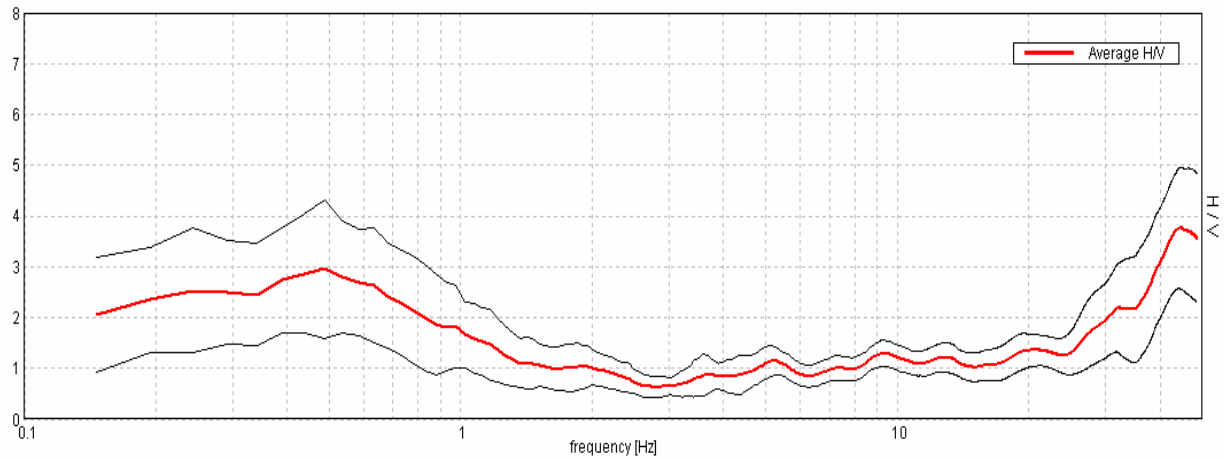
QUOTA: 22 m s.l.m.

OPERATORI: Dr. Arbizzi - Mazzetti M.

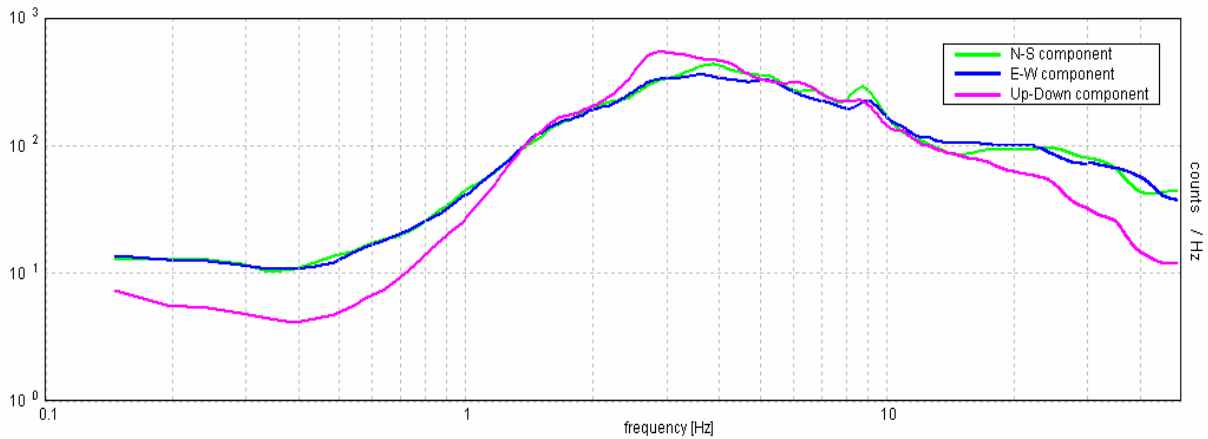
Strumentazione: Sara SR04 HS - 4,5 Hz - matricola N488

Rapporto spettrale

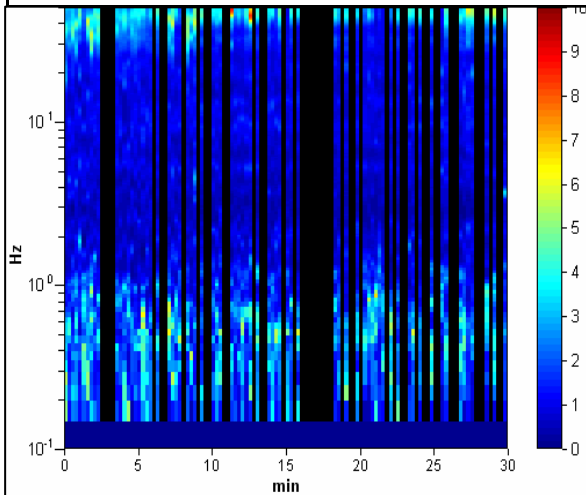
Max. HVV at 0.49 ± 0.11 Hz. (In the range 0.0 - 18.0 Hz).



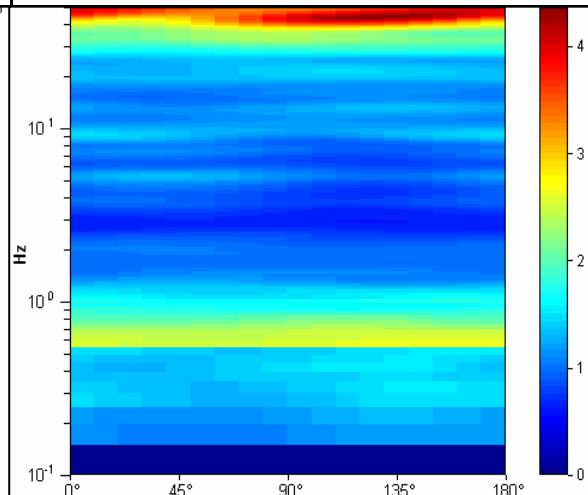
Ampiezza spettrale



Stabilità



Direzionalità



STUDIO GEOLOGICO CENTROGEO
P.zza S.Quirino, 6 - 42015 CORREGGIO

INDAGINE HVSR H04

LOCALITA': Rio Saliceto (RE)

COMMITTENTE: Amm. Comunale

DATA: 29-09-2008

CANTIERE: Via S.Pietro

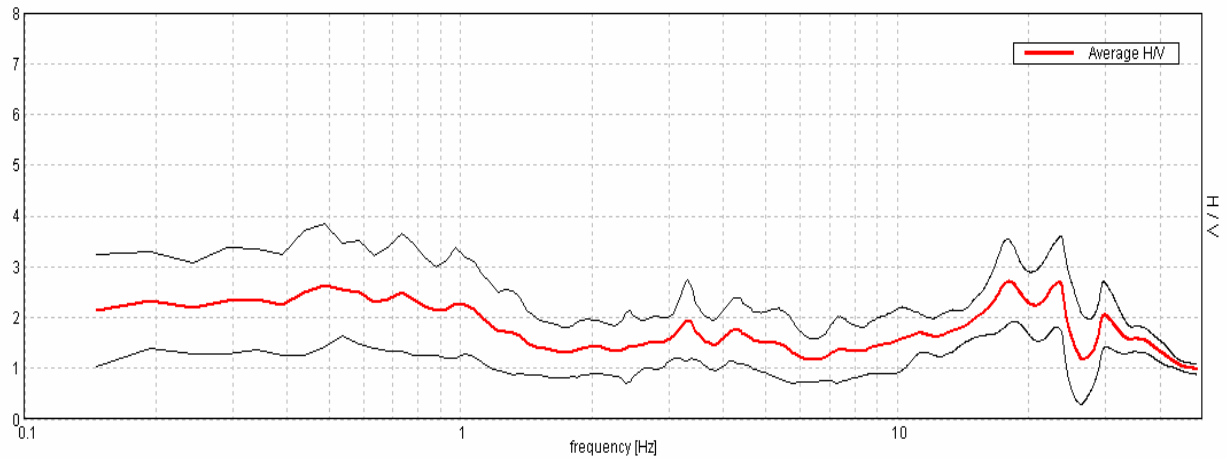
QUOTA: 23 m s.l.m.

OPERATORI: Dr. Arbizzi - Mazzetti M.

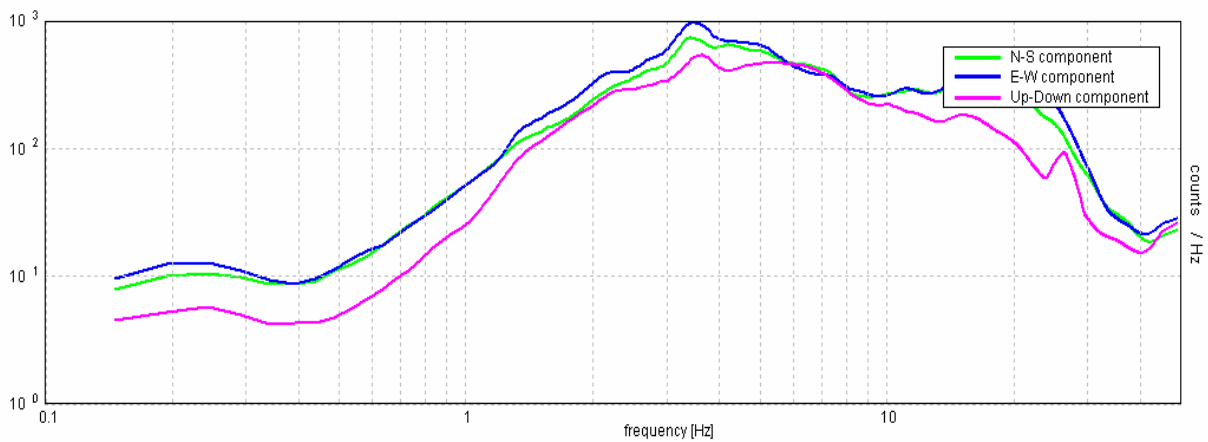
Strumentazione: Sara SR04 HS - 4,5 Hz - matricola N488

Rapporto spettrale

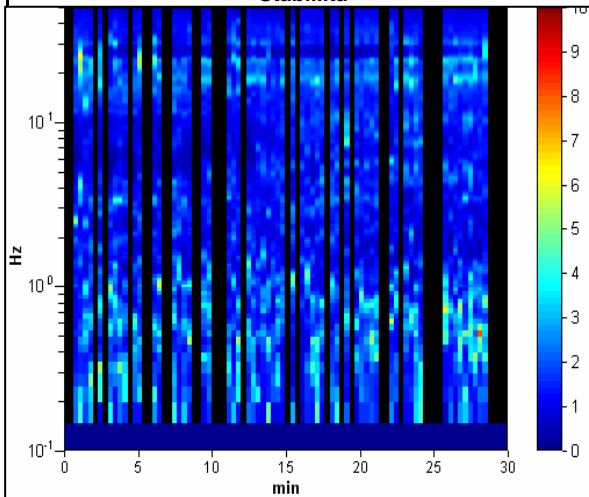
Max. HV at 17.97 ± 12.73 Hz. (In the range 0.0 - 18.0 Hz).



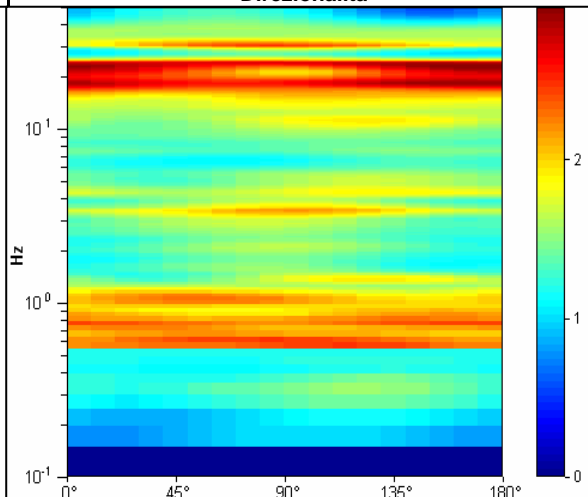
Ampiezza spettrale



Stabilità



Direzionalità



STUDIO GEOLOGICO CENTROGEO
P.zza S.Quirino, 6 - 42015 CORREGGIO

INDAGINE HVSR H05

LOCALITA': Rio Saliceto (RE)

COMMITTENTE: Amm. Comunale

DATA: 29-09-2008

CANTIERE: C.Giorgi

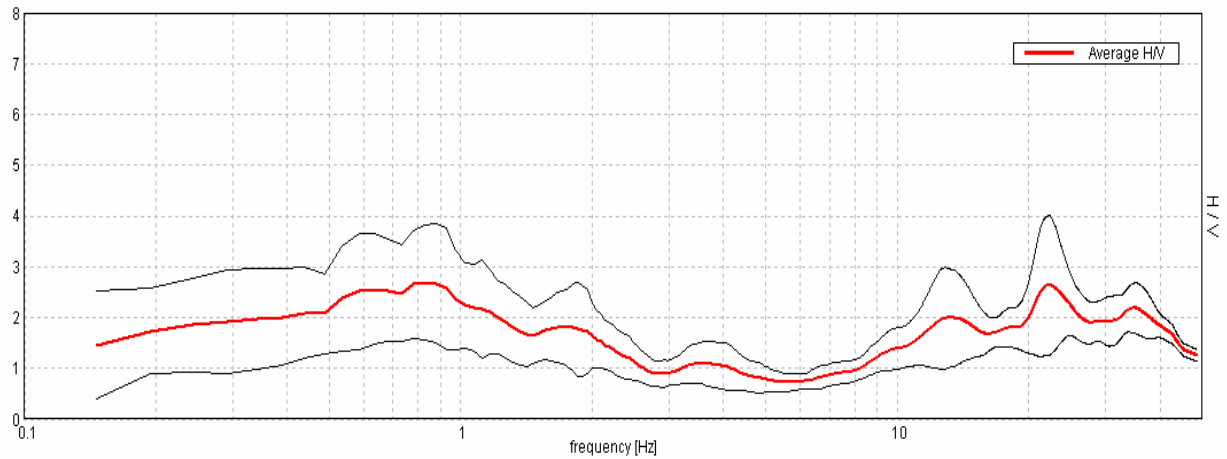
QUOTA: 23 m s.l.m.

OPERATORI: Dr. Arbizzi - Mazzetti M.

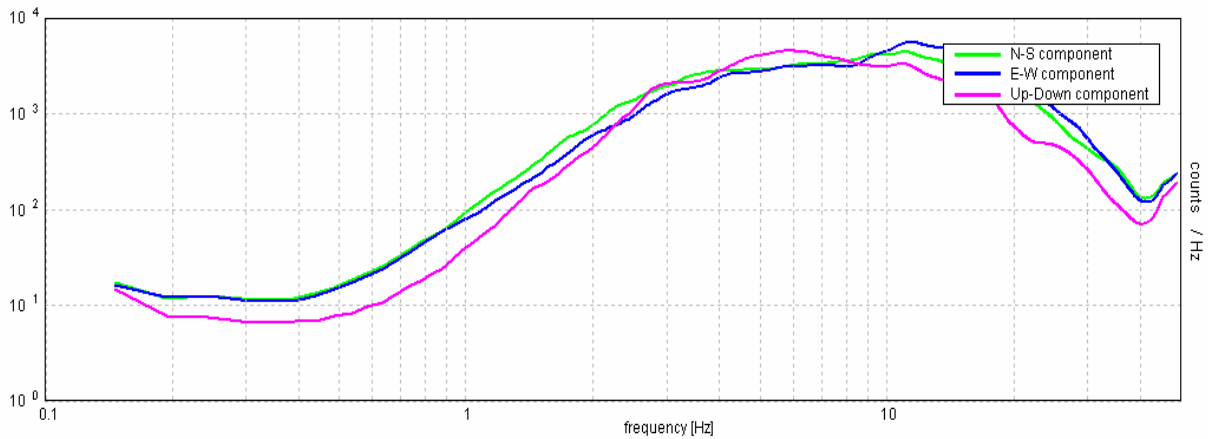
Strumentazione: Sara SR04 HS - 4,5 Hz - matricola N488

Rapporto spettrale

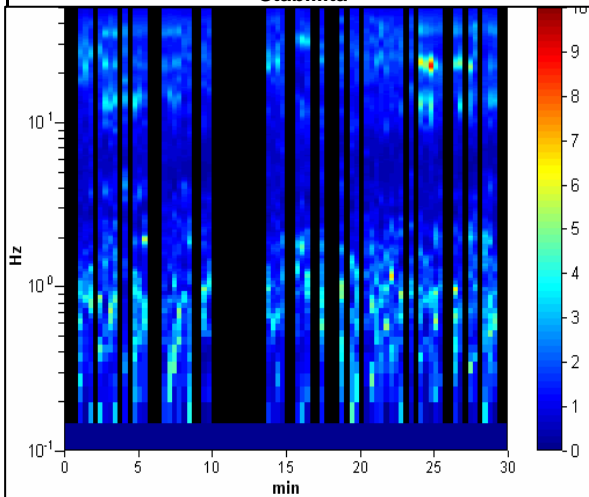
Max. HVV at 0.83 ± 0.04 Hz. (In the range 0.0 - 18.0 Hz).



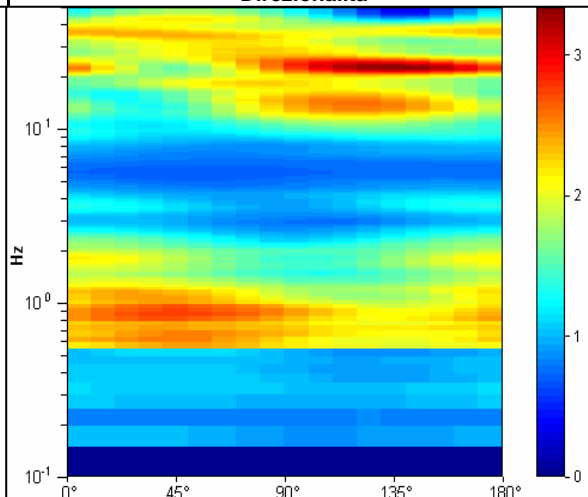
Ampiezza spettrale



Stabilità



Direzionalità



STUDIO GEOLOGICO CENTROGEO
P.zza S.Quirino, 6 - 42015 CORREGGIO

INDAGINE HVSR H06

LOCALITA': Rio Saliceto (RE)

COMMITTENTE: Amm. Comunale

DATA: 29-09-2008

CANTIERE: C.Bartoli

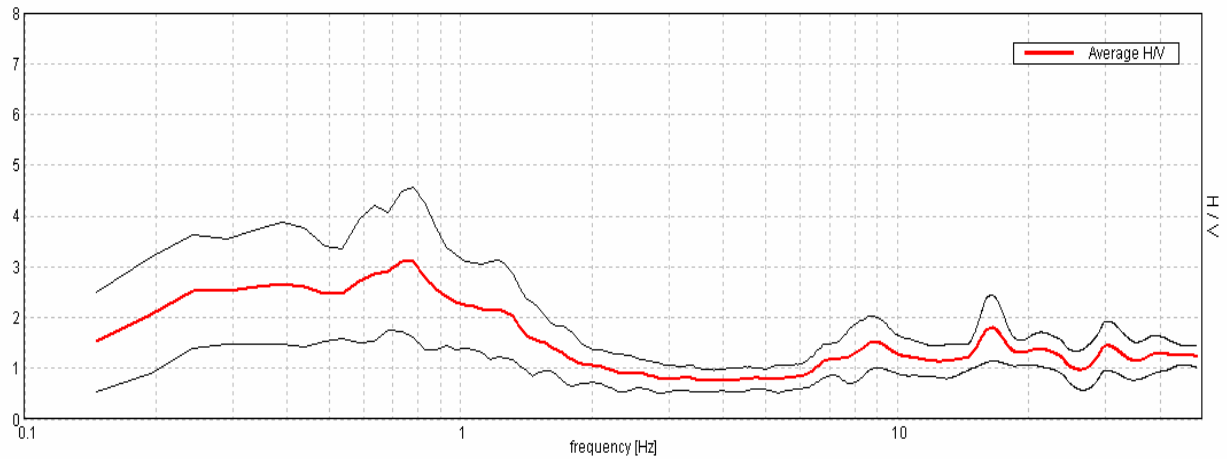
QUOTA: 25 m s.l.m.

OPERATORI: Dr. Arbizzi - Mazzetti M.

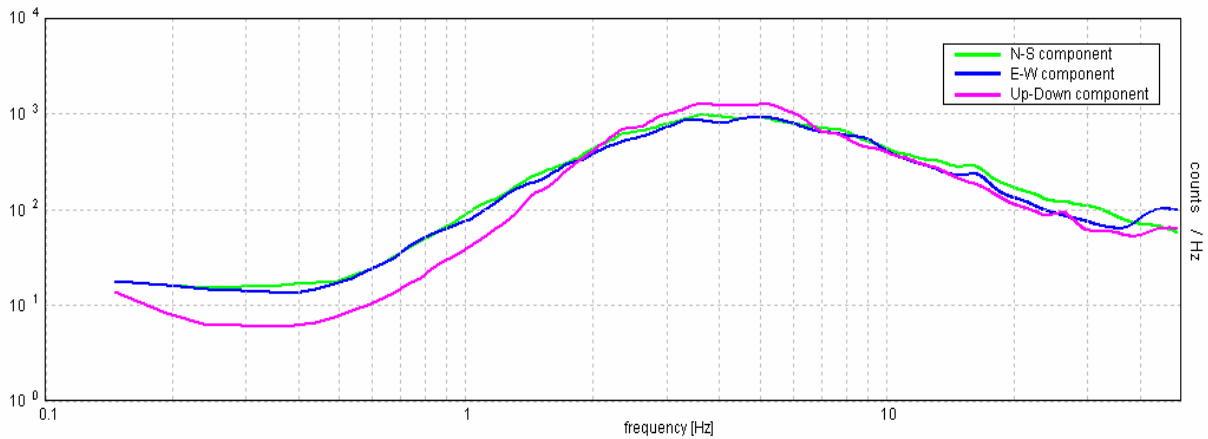
Strumentazione: Sara SR04 HS - 4,5 Hz - matricola N488

Rapporto spettrale

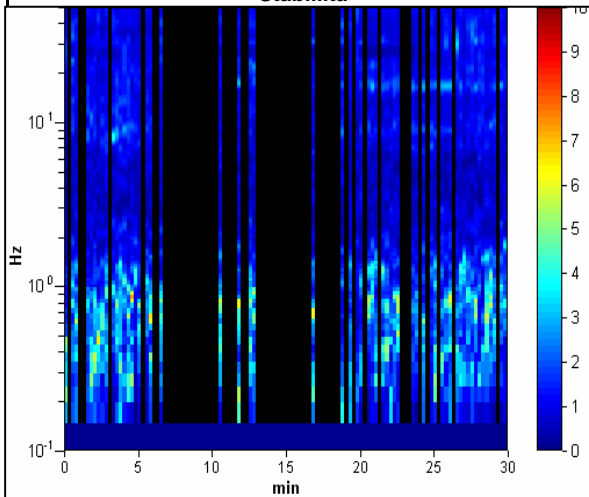
Max. HVV at 0.78 ± 0.2 Hz. (In the range 0.0 - 18.0 Hz).



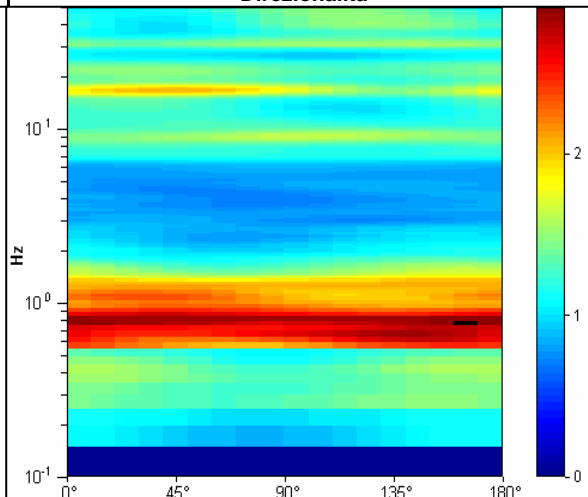
Ampiezza spettrale



Stabilità



Direzionalità



STUDIO GEOLOGICO CENTROGEO
P.zza S.Quirino, 6 - 42015 CORREGGIO

INDAGINE HVSR H07

LOCALITA': Rio Saliceto (RE)

COMMITTENTE: Amm. Comunale

DATA: 30-09-2008

CANTIERE: Rio Saliceto

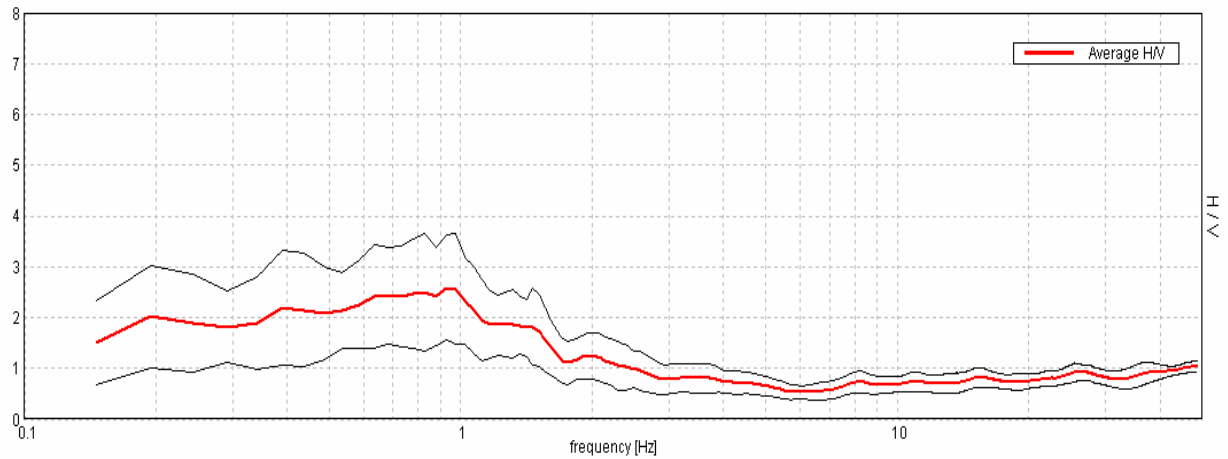
QUOTA: 25 m s.l.m.

OPERATORI: Dr. Arbizzi - Mazzetti M.

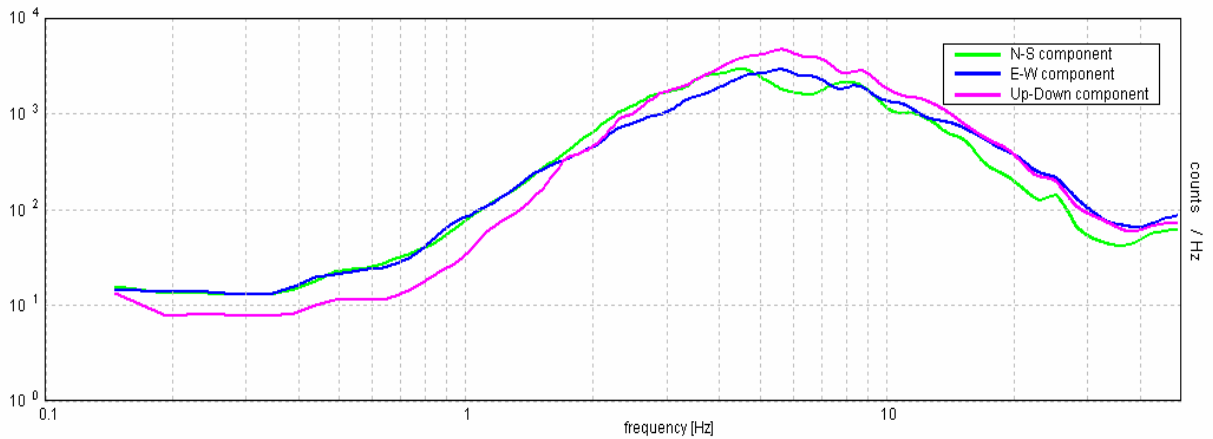
Strumentazione: Sara SR04 HS - 4,5 Hz - matricola N488

Rapporto spettrale

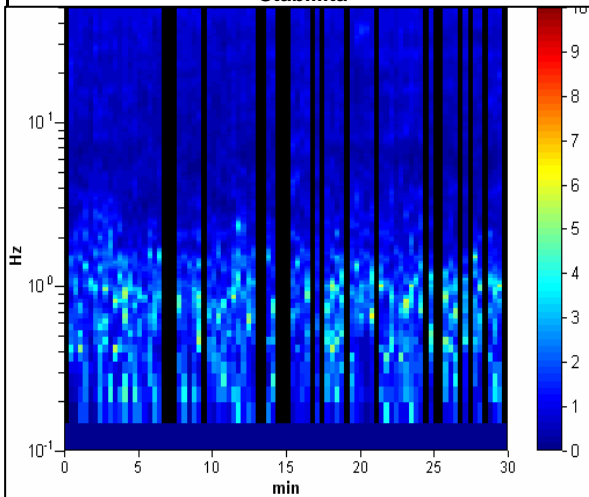
Max. HVV at 0.93 ± 0.22 Hz. (In the range 0.0 - 18.0 Hz).



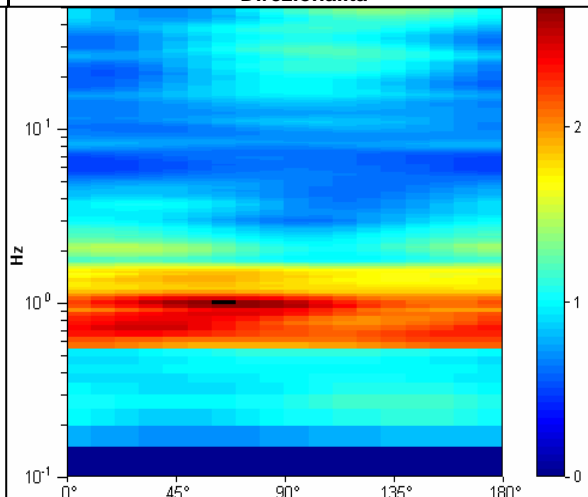
Ampiezza spettrale



Stabilità



Direzionalità



STUDIO GEOLOGICO CENTROGEO
P.zza S. Quirino, 6 - 42015 CORREGGIO

INDAGINE HVSR H08

LOCALITA': Rio Saliceto (RE)

COMMITTENTE: Amm. Comunale

DATA: 30-09-2008

CANTIERE: Rio Saliceto

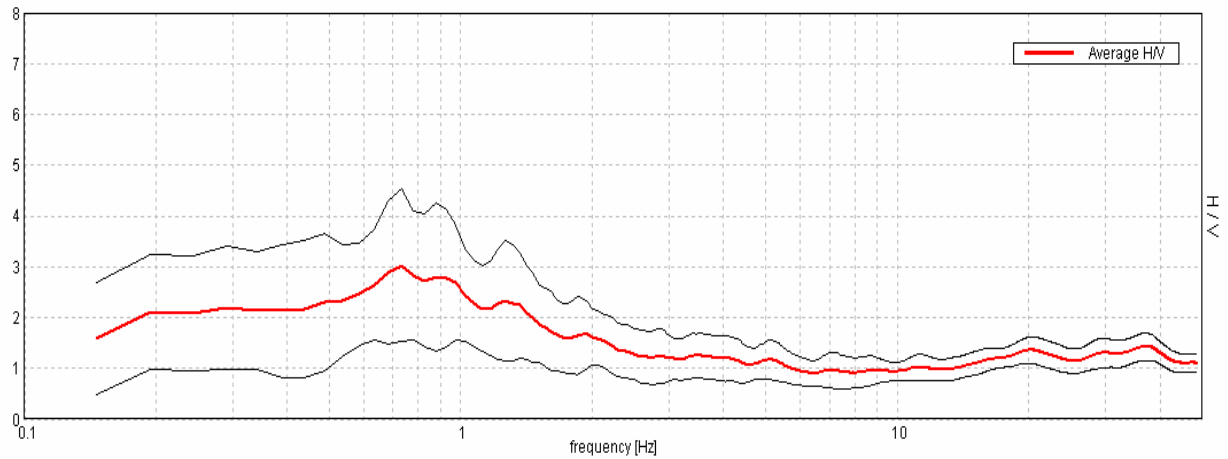
QUOTA: 25 m s.l.m.

OPERATORI: Dr. Arbizzi - Mazzetti M.

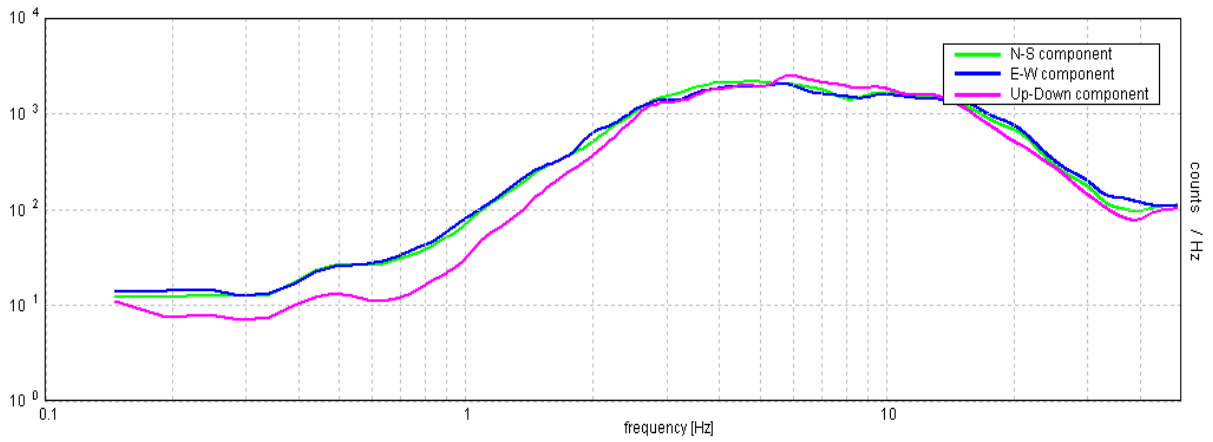
Strumentazione: Sara SR04 HS - 4,5 Hz - matricola N488

Rapporto spettrale

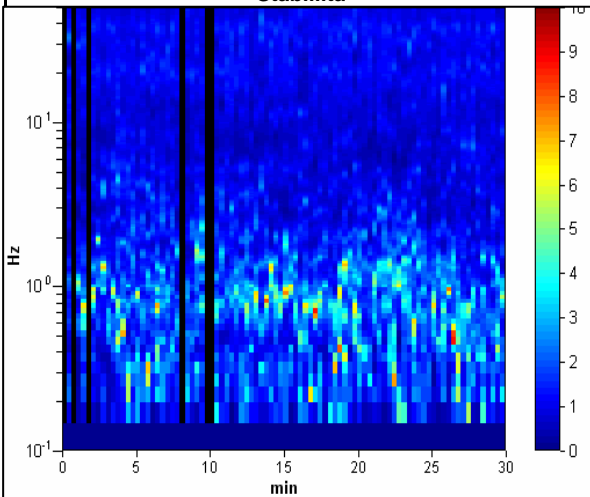
Max. HVV at 0.73 ± 0.12 Hz. (In the range 0.0 - 18.0 Hz).



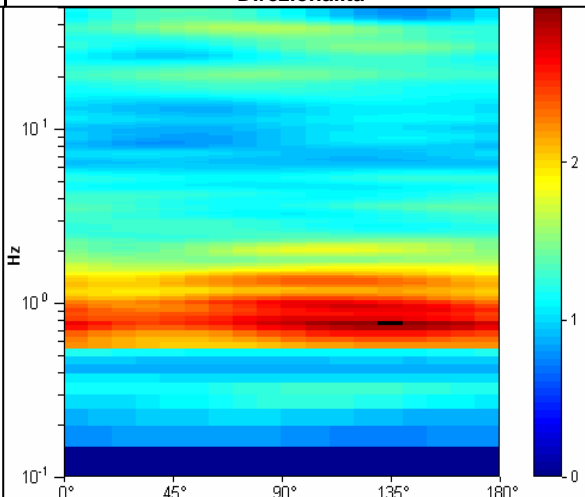
Ampiezza spettrale



Stabilità



Direzionalità



STUDIO GEOLOGICO CENTROGEO
P.zza S. Quirino, 6 - 42015 CORREGGIO

INDAGINE HVSR H09

LOCALITA': Rio Saliceto (RE)

COMMITTENTE: Amm. Comunale

DATA: 30-09-2008

CANTIERE: PSC 2008

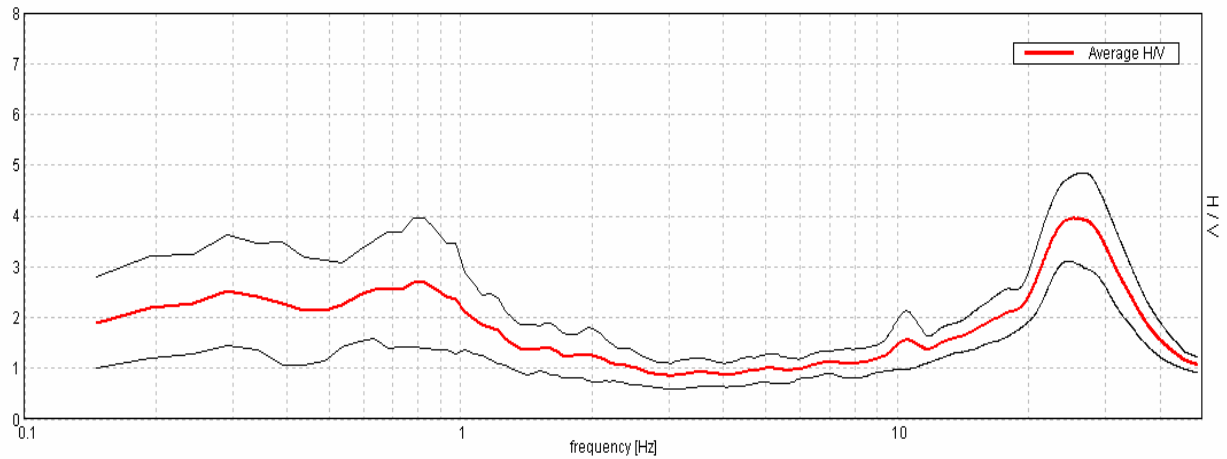
QUOTA: 25 m s.l.m.

OPERATORI: Dr. Arbizzi - Mazzetti M.

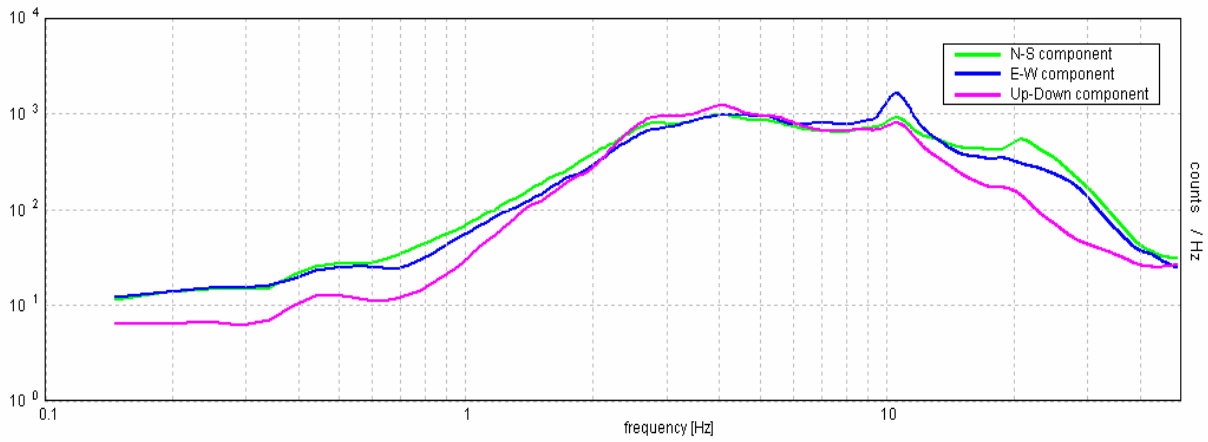
Strumentazione: Sara SR04 HS - 4,5 Hz - matricola N488

Rapporto spettrale

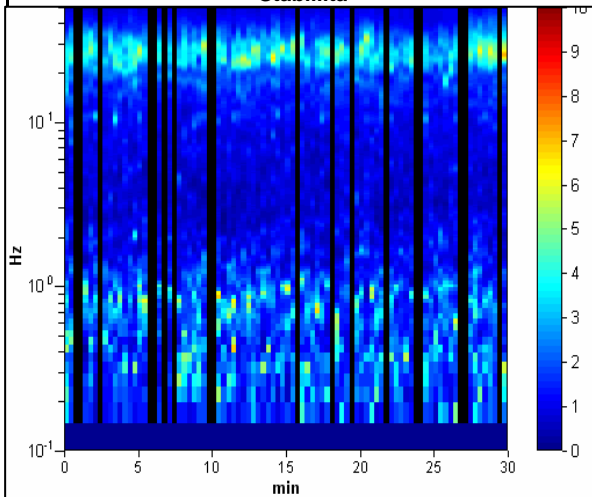
Max. HVV at 0.78 ± 0.11 Hz. (In the range 0.0 - 18.0 Hz).



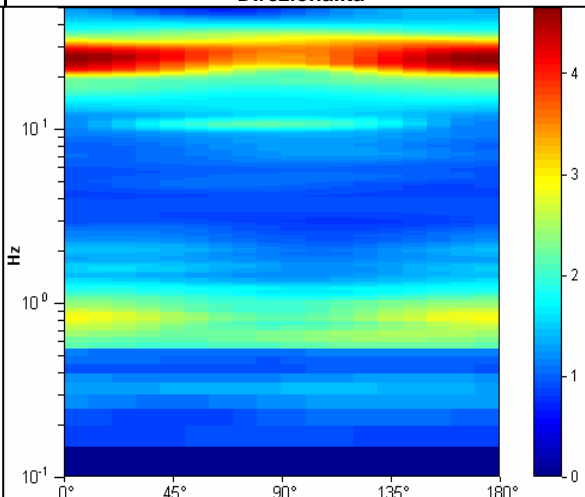
Ampiezza spettrale



Stabilità



Direzionalità



STUDIO GEOLOGICO CENTROGEO
P.zza S.Quirino, 6 - 42015 CORREGGIO

INDAGINE HVSR H10

LOCALITA': Rio Saliceto (RE)

COMMITTENTE: Amm. Comunale

DATA: 30-09-2008

CANTIERE: Osteriola

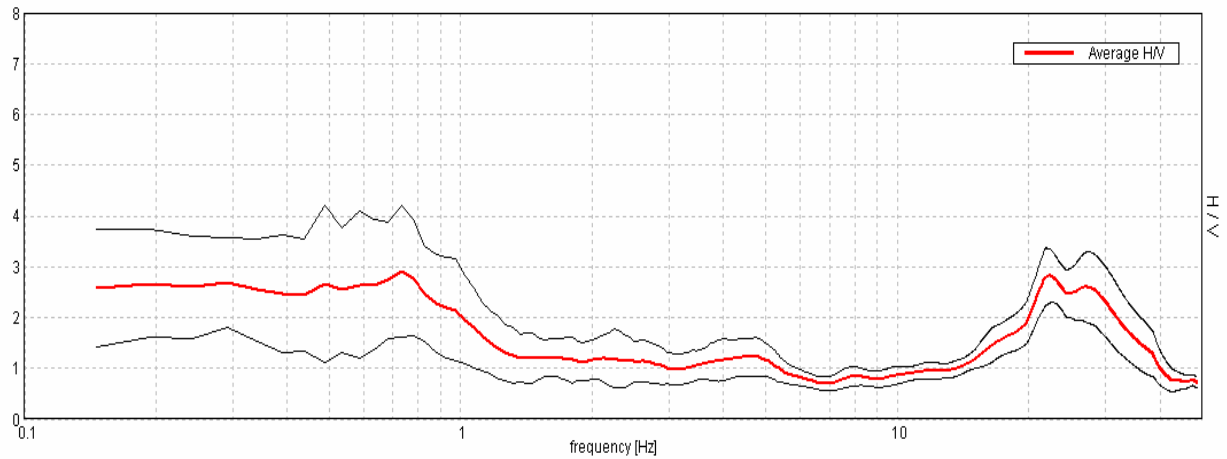
QUOTA: 25 m s.l.m.

OPERATORI: Dr. Arbizzi - Mazzetti M.

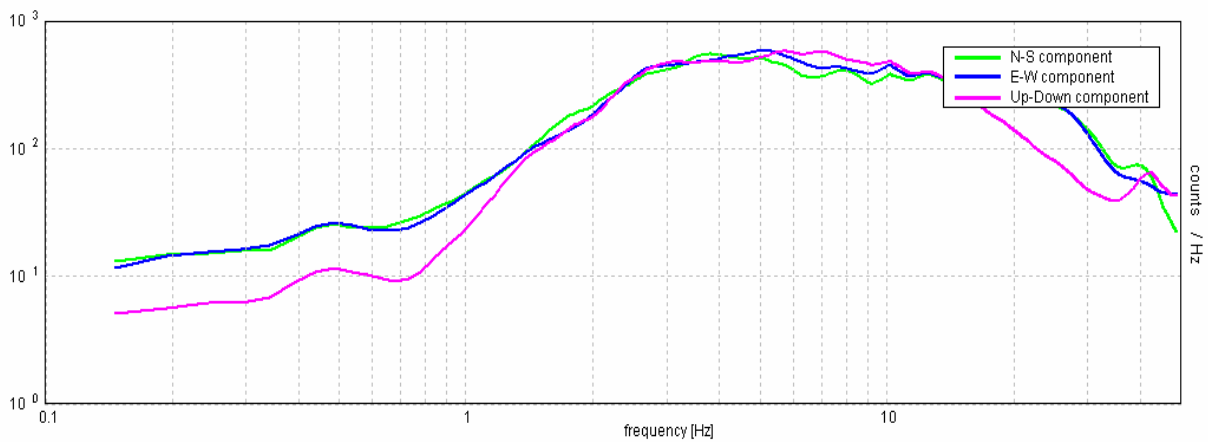
Strumentazione: Sara SR04 HS - 4,5 Hz - matricola N488

Rapporto spettrale

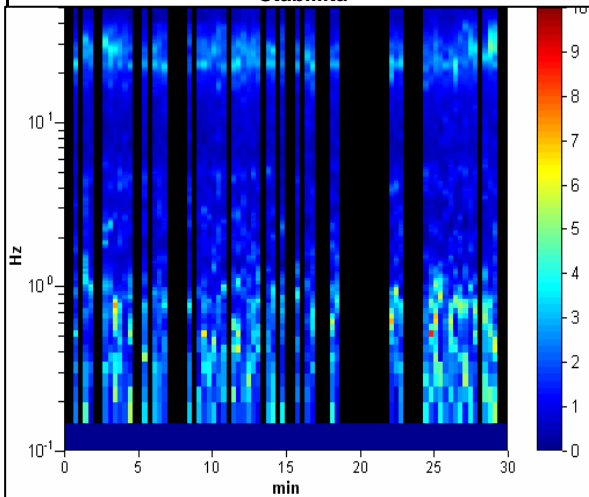
Max. HV at 0.73 ± 0.37 Hz. (In the range 0.0 - 18.0 Hz).



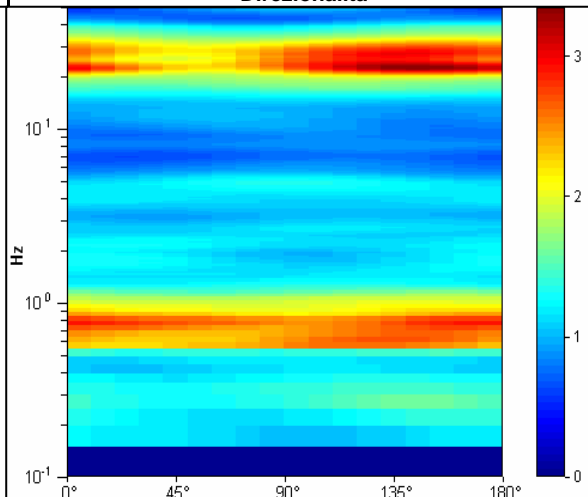
Ampiezza spettrale



Stabilità



Direzionalità



LOCALITA': Rio Saliceto (RE)

COMMITTENTE: Amm. Comunale

DATA: 07-01-2014

CANTIERE: C. Bosco

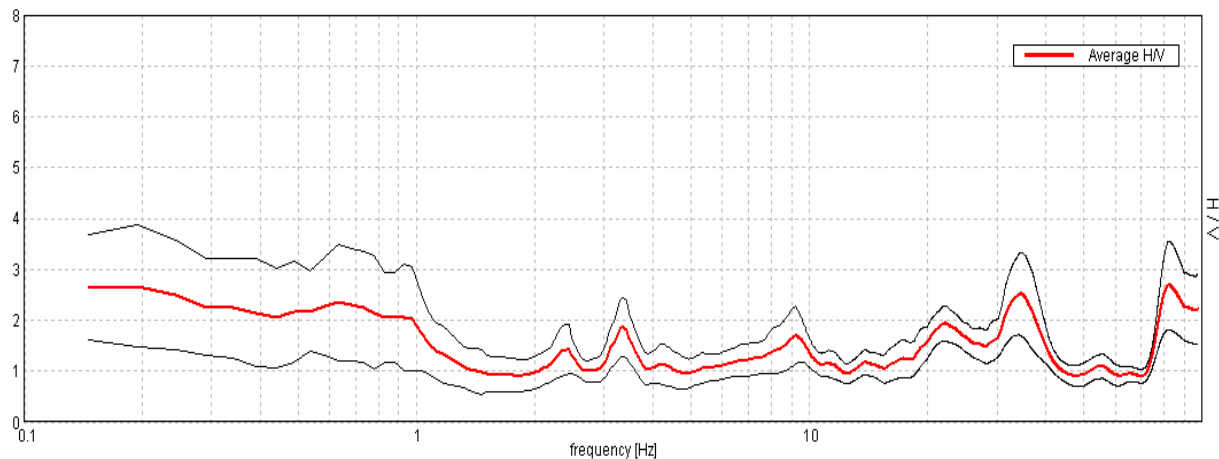
QUOTA: 22 m s.l.m.

OPERATORI: Dr. Arbizzi - Mazzetti M.

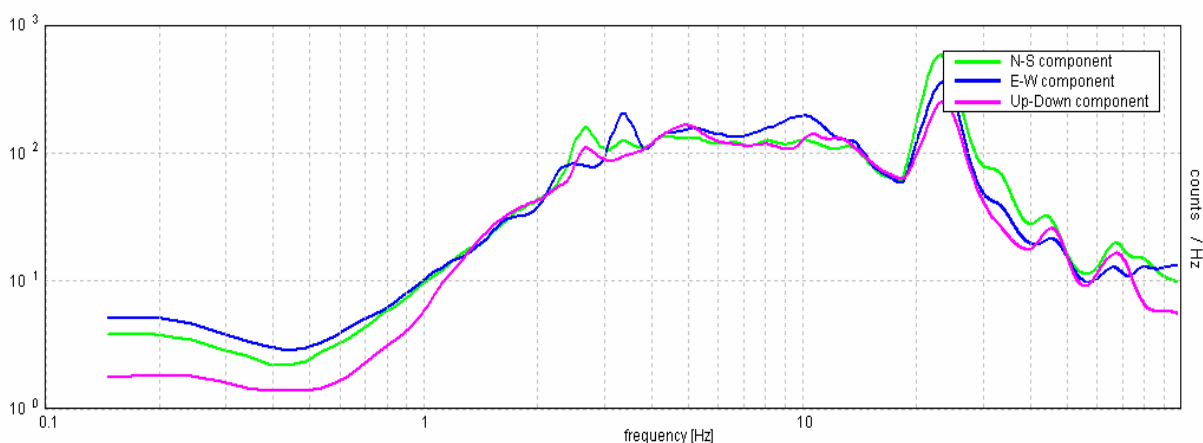
Strumentazione: Sara SR04 HS - 4,5 Hz - matricola N488

Rapporto spettrale

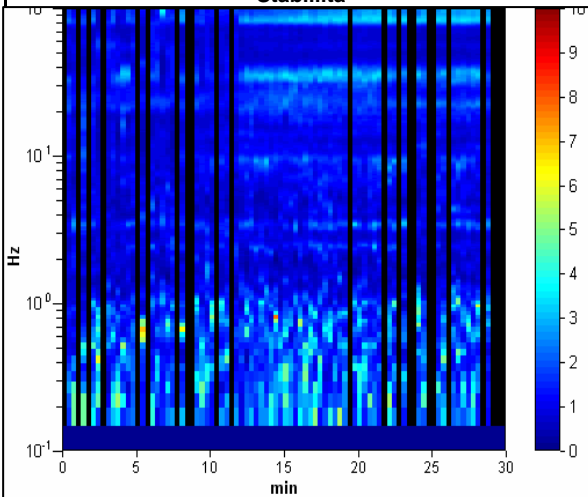
Max. HV at 0.63 ± 1.21 Hz. (In the range 0.4 - 18.0 Hz).



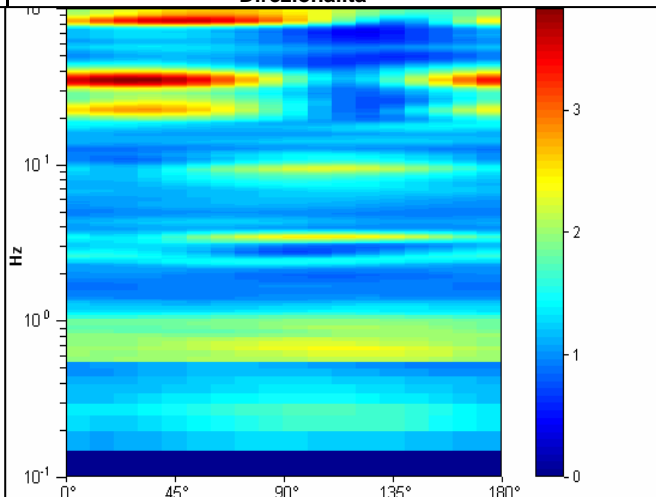
Ampiezza spettrale



Stabilità



Direzionalità



LOCALITA': Rio Saliceto (RE)

COMMITTENTE: Amm. Comunale

DATA: 07-01-2014

CANTIERE: Corno Grande

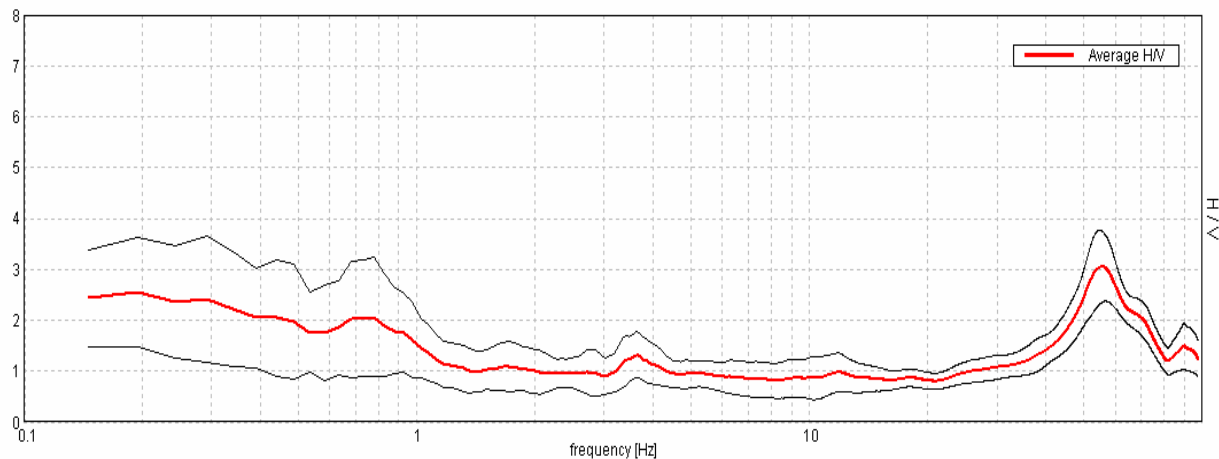
QUOTA: 24 m s.l.m.

OPERATORI: Dr. Arbizzi - Mazzetti M.

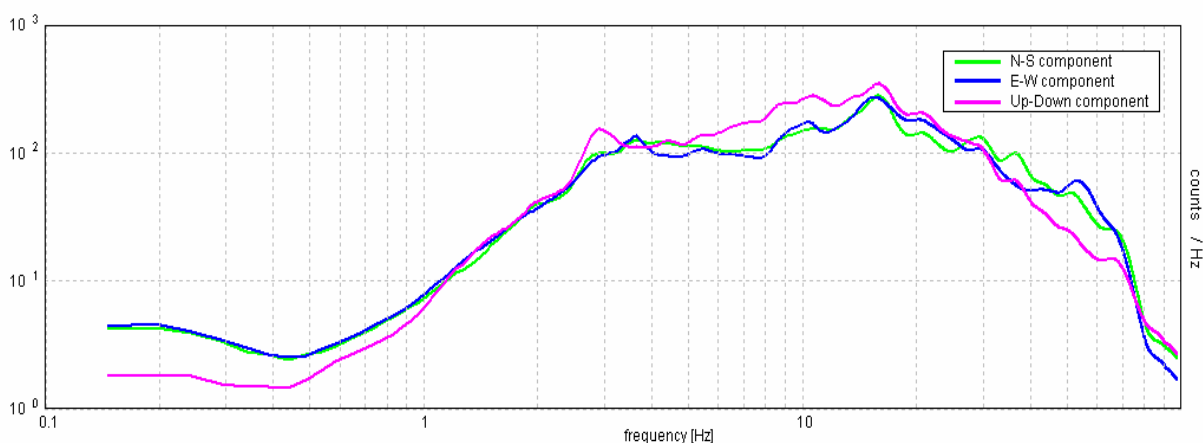
Strumentazione: Sara SR04 HS - 4,5 Hz - matricola N488

Rapporto spettrale

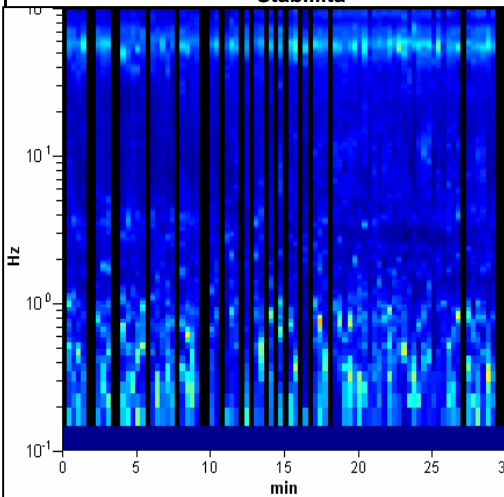
Max. HV at 0.78 ± 0.28 Hz. (In the range 0.4 - 18.0 Hz).



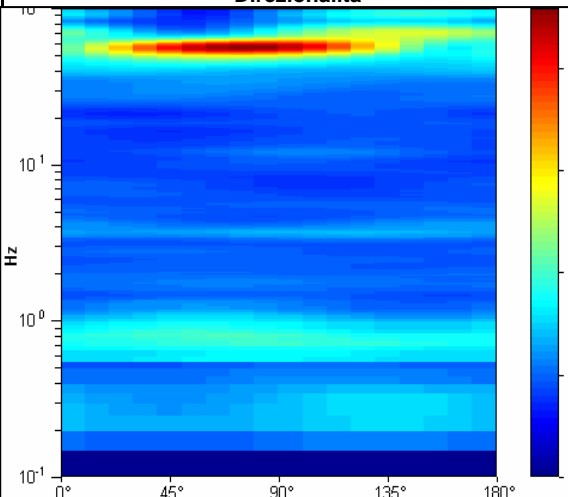
Ampiezza spettrale



Stabilità



Direzionalità



LOCALITA': Rio Saliceto (RE)

COMMITTENTE: Amm. Comunale

DATA: 07-01-2014

CANTIERE: Colombarone

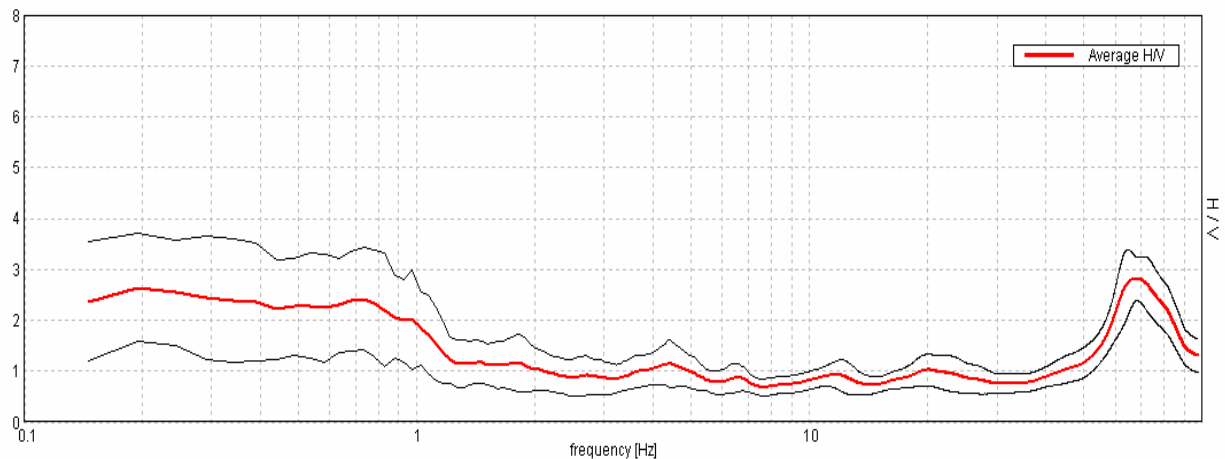
QUOTA: 24 m s.l.m.

OPERATORI: Dr. Arbizzi - Mazzetti M.

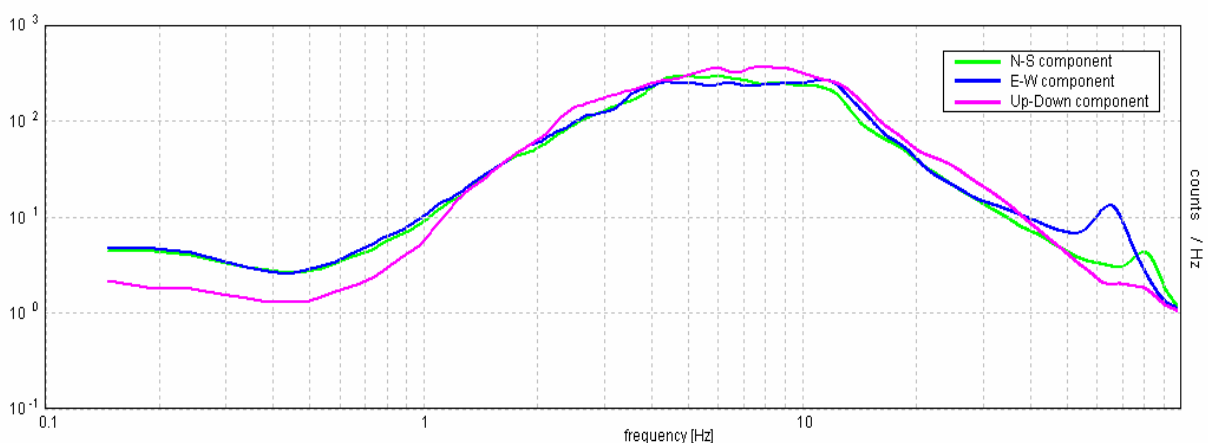
Strumentazione: Sara SR04 HS - 4,5 Hz - matricola N488

Rapporto spettrale

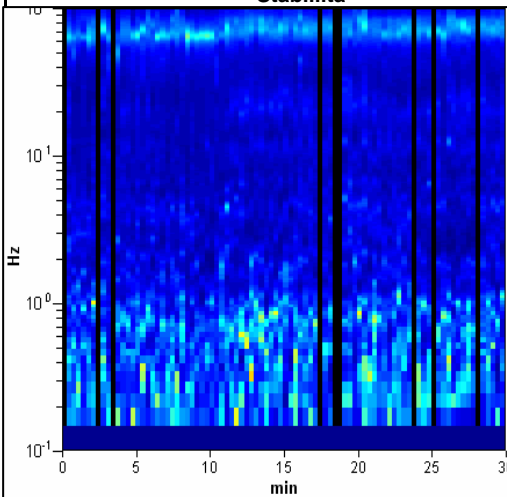
Max. HV at 0.73 ± 0.12 Hz. (In the range 0.4 - 18.0 Hz).



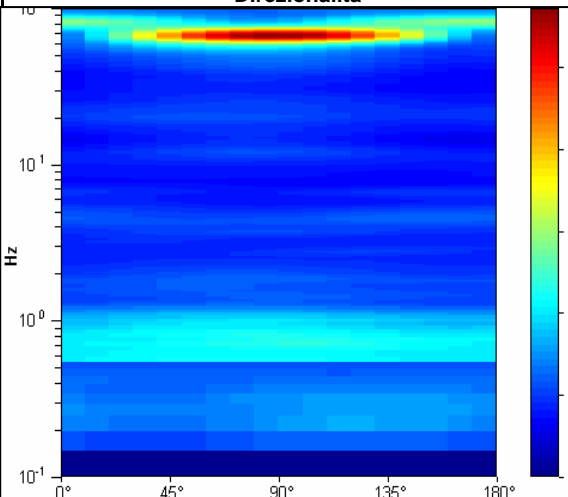
Ampiezza spettrale



Stabilità



Direzionalità



LOCALITA': Rio Saliceto (RE)

COMMITTENTE: Amm. Comunale

DATA: 07-01-2014

CANTIERE: Rio Saliceto

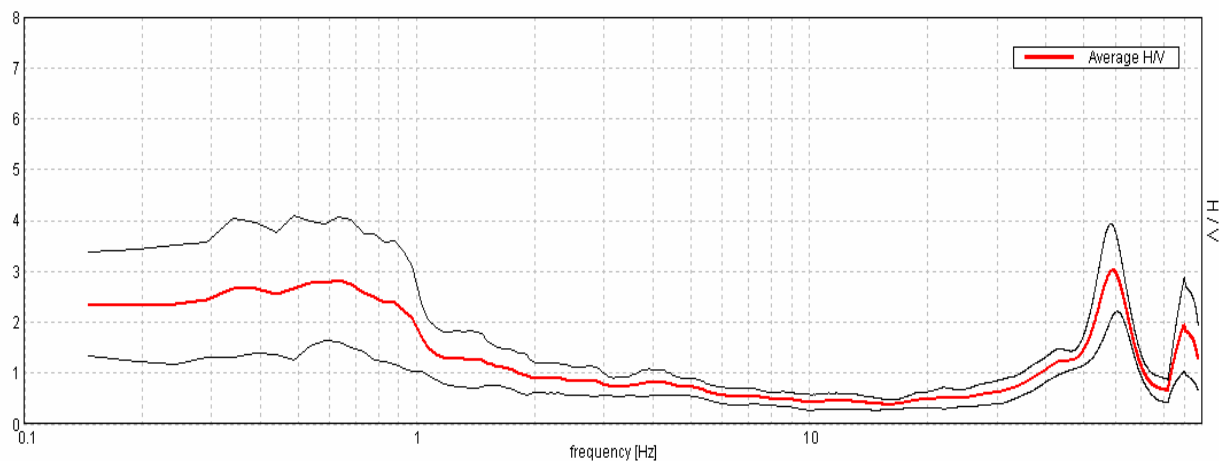
QUOTA: 24 m s.l.m.

OPERATORI: Dr. Arbizzi - Mazzetti M.

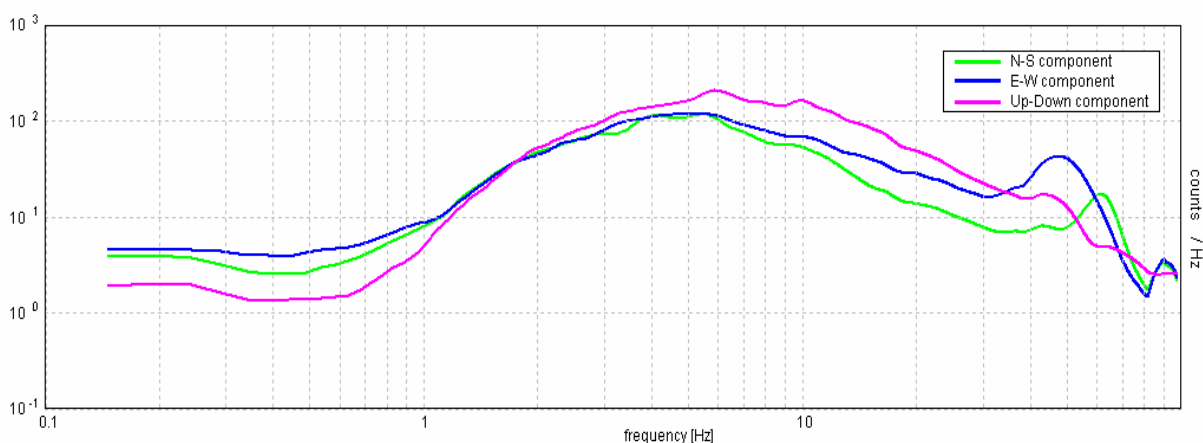
Strumentazione: Sara SR04 HS - 4,5 Hz - matricola N488

Rapporto spettrale

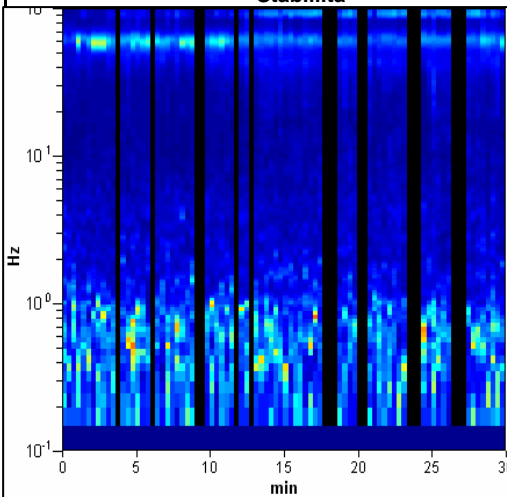
Max. HVV at 0.63 ± 0.1 Hz. (In the range 0.4 - 18.0 Hz).



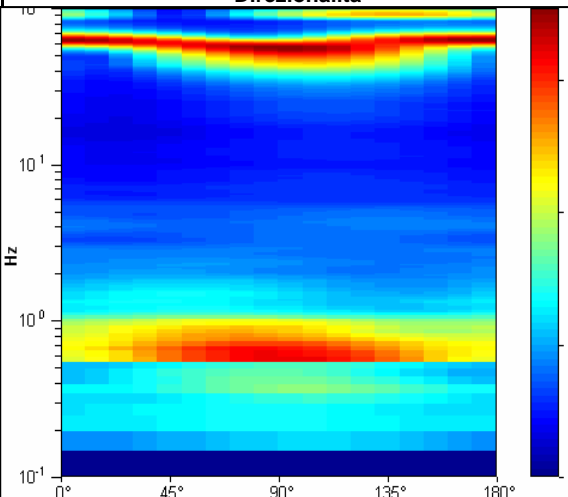
Ampiezza spettrale



Stabilità



Direzionalità



STUDIO GEOLOGICO CENTROGEO
P.zza S.Quirino, 6 - 42015 CORREGGIO

INDAGINE HVSR H15

LOCALITA': Rio Saliceto (RE)

COMMITTENTE: Amm. Comunale

DATA: 07-01-2014

CANTIERE: C.Bassoli

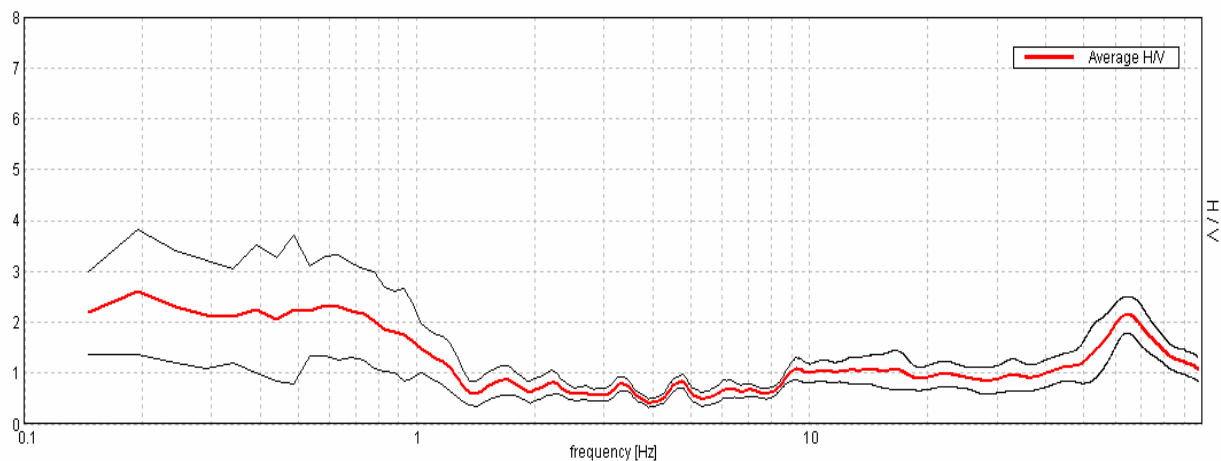
QUOTA: 24 m s.l.m.

OPERATORI: Dr. Arbizzi - Mazzetti M.

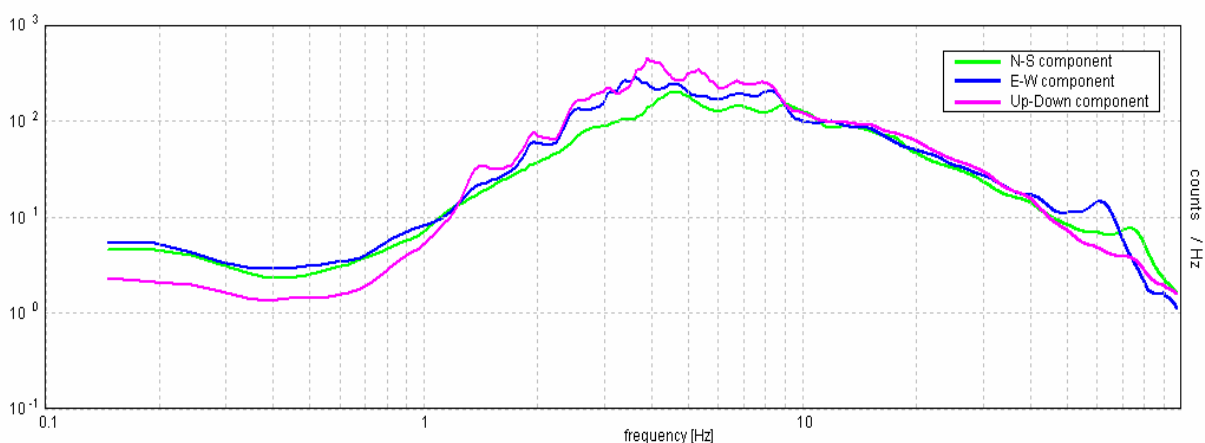
Strumentazione: Sara SR04 HS - 4,5 Hz - matricola N488

Rapporto spettrale

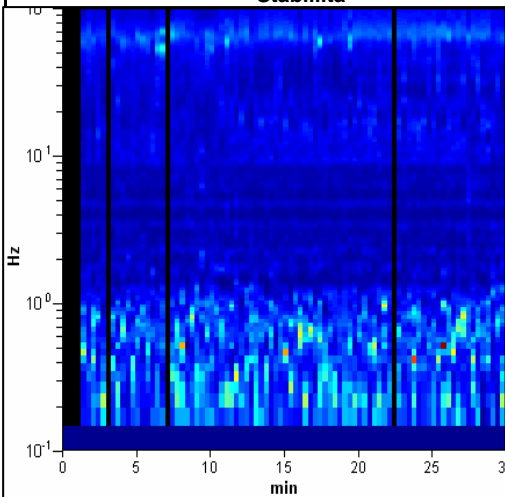
Max. HVV at 0.59 ± 0.09 Hz. (In the range 0.4 - 18.0 Hz).



Ampiezza spettrale



Stabilità



Direzionalità

