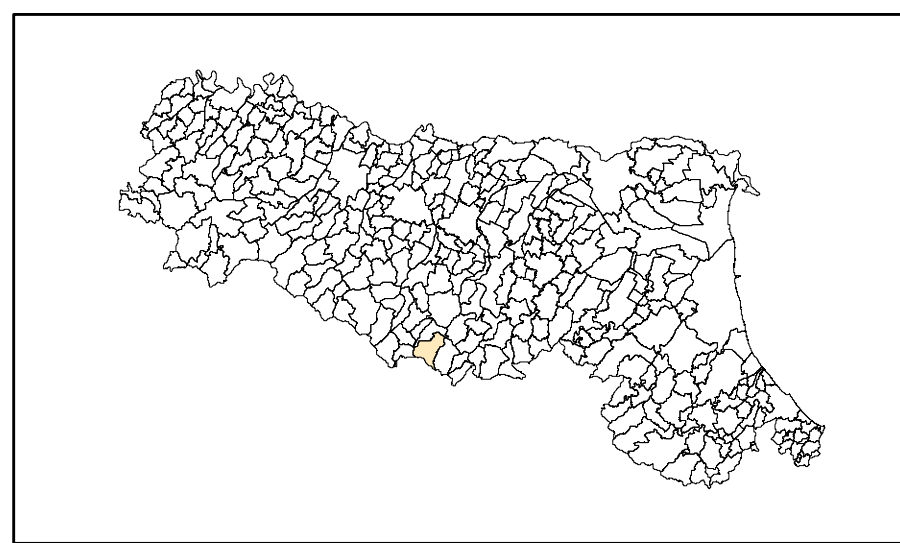


MICROZONAZIONE SISMICA

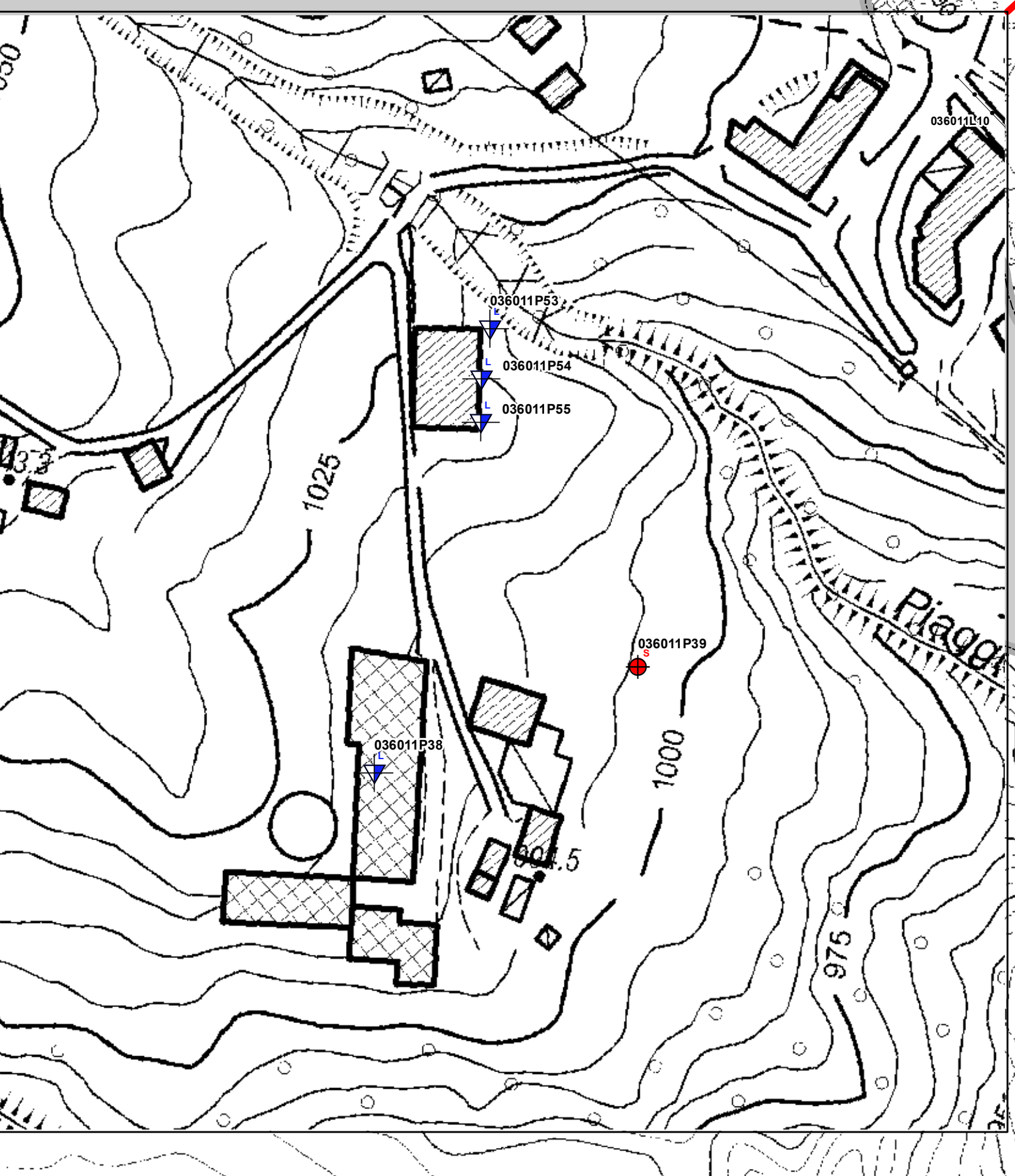
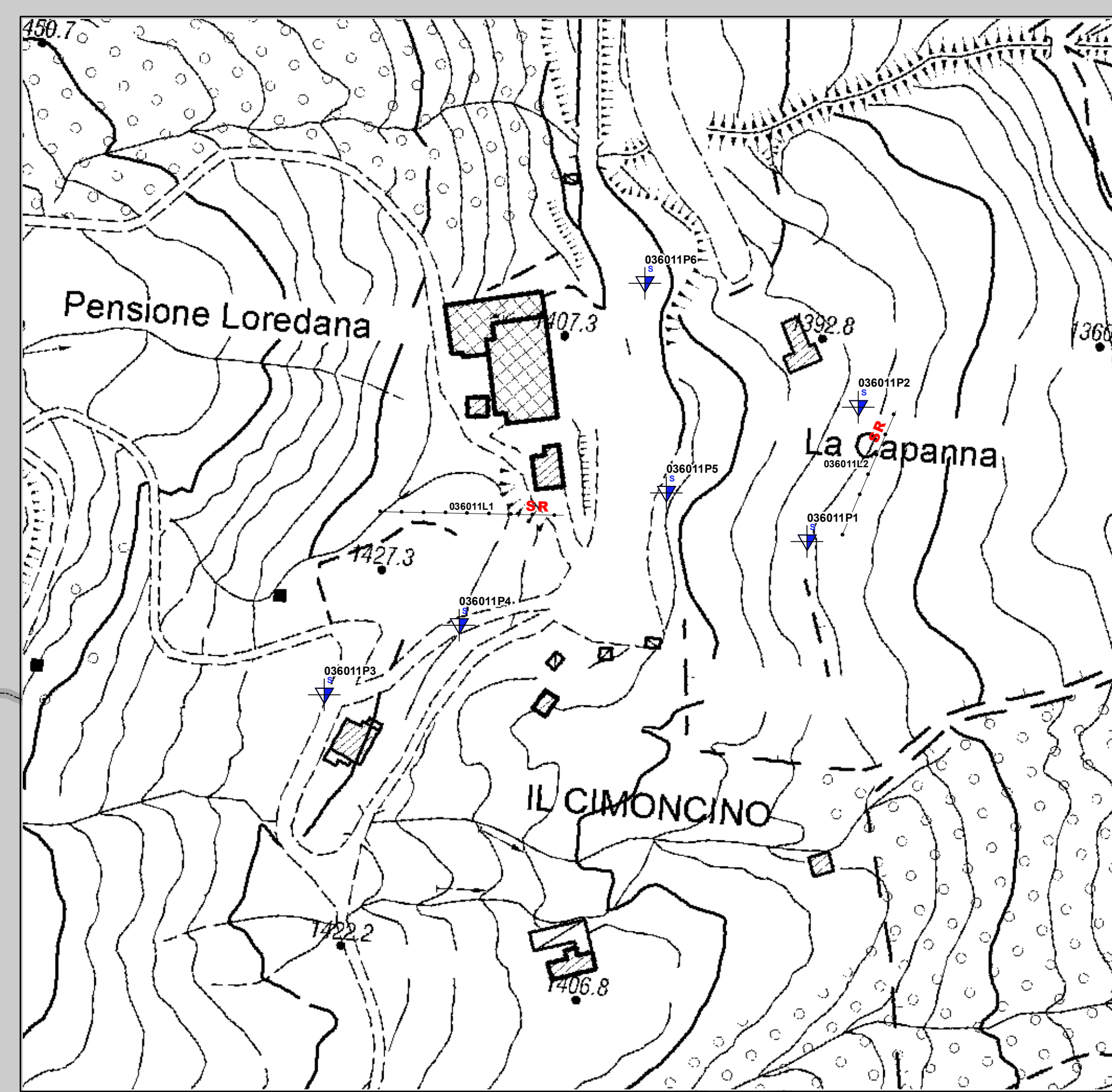
Carta delle indagini








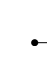
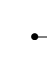
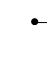

scala 1:10.000

Regione Emilia-Romagna
Comune di Fanano



Regione	Soggetto realizzatore	Data
Emilia Romagna	Studio Geologia Tecnica Dott. Geol. Lorenzo Del Maschio	Ottobre 2017
Collaboratori Ing. Giorgia Tonioni Dott. Geol. Pierluigi Galli		



- ### Legenda
-  Sondaggio a carotaggio continuo
 -  Sondaggio a carotaggio continuo che interseca il substrato
 -  Prova penetrometrica dinamica super pesante
 -  Prova penetrometrica dinamica media
 -  Prova penetrometrica dinamica leggera
 -  Stazione microtremore a stazione singola
 -  Array sismico, ESAC/SPAC
 -  FTN
 -  MASW
 -  RM - Prova Refraction/Microtremor
 -  SR - Profilo sismico a rifrazione

