

QUADRO CONOSCITIVO
CARTE DELLE SICUREZZE DEL TERRITORIO
MICROZONAZIONE SISMICA
 Adottato con DCC n xxx del xx/xx/201x
 Approvato con DCC n xxx del xx/xx/201x

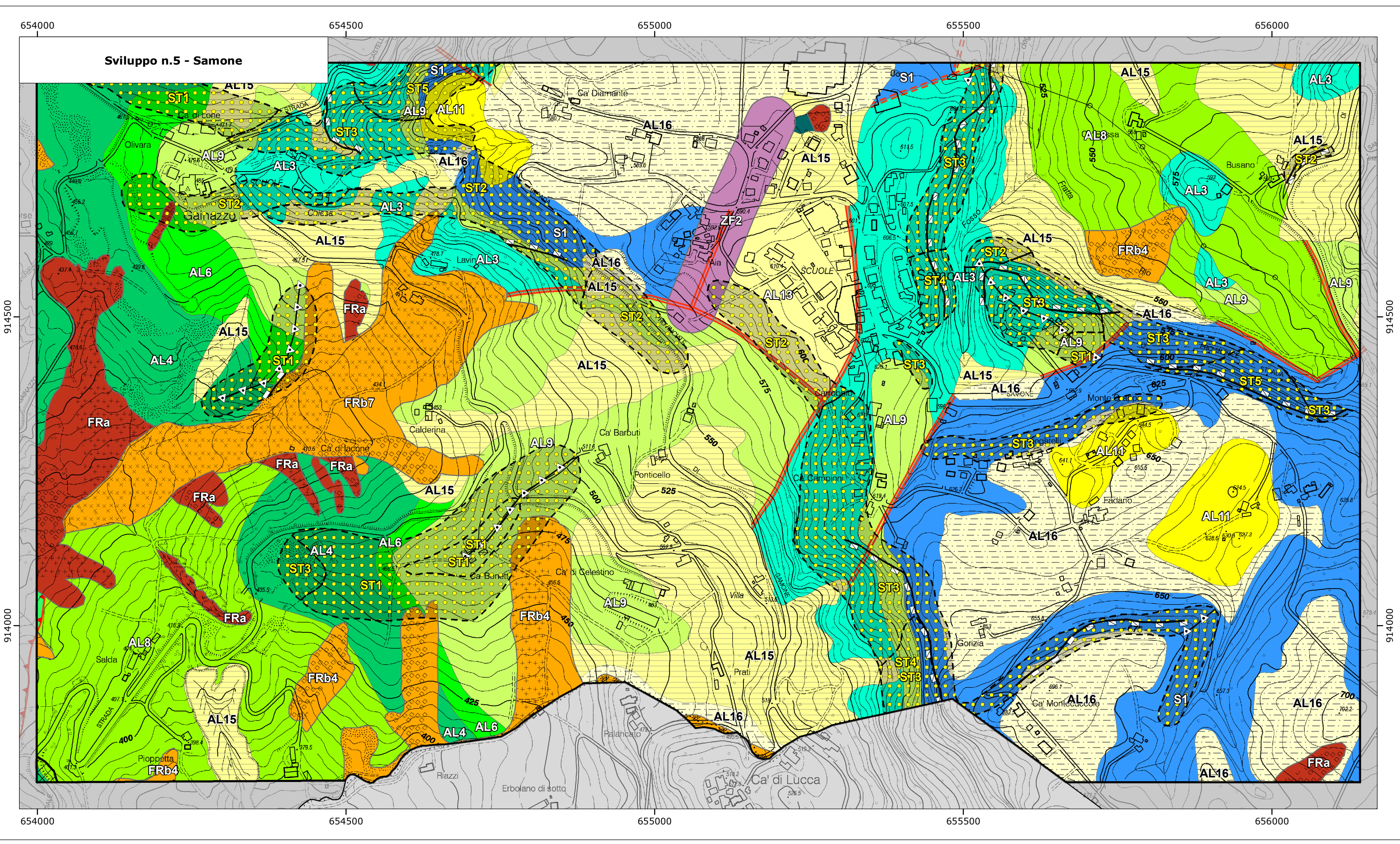
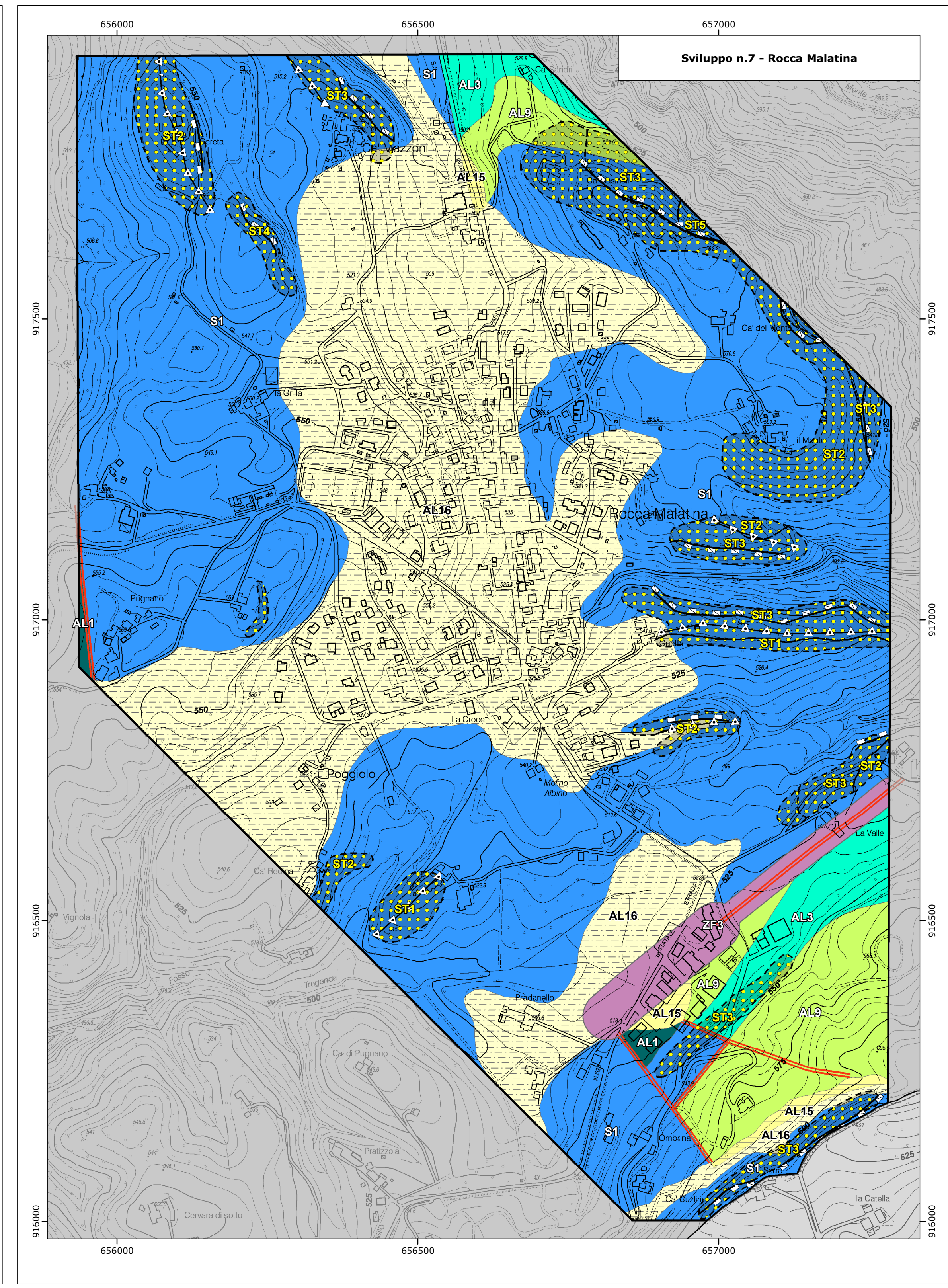
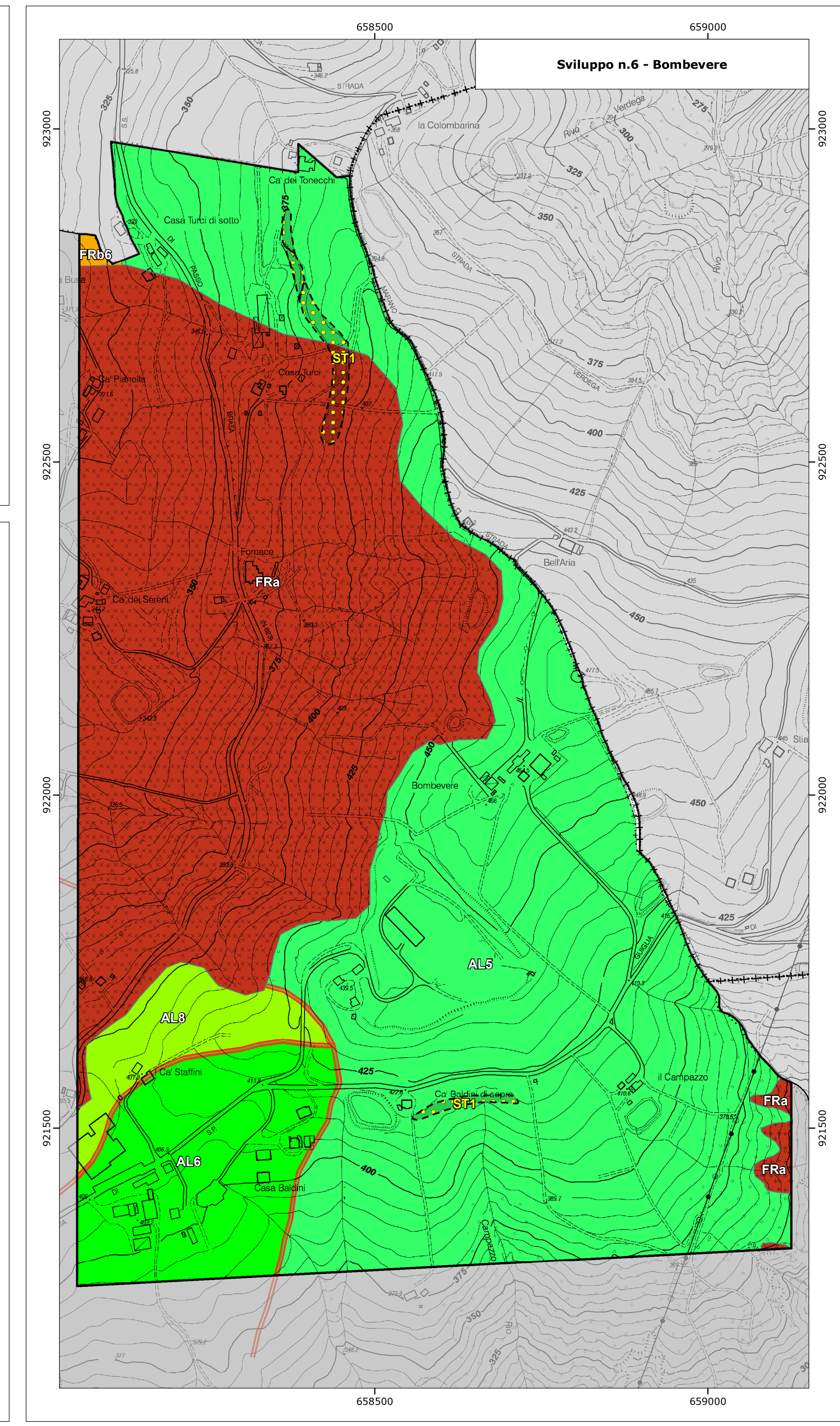
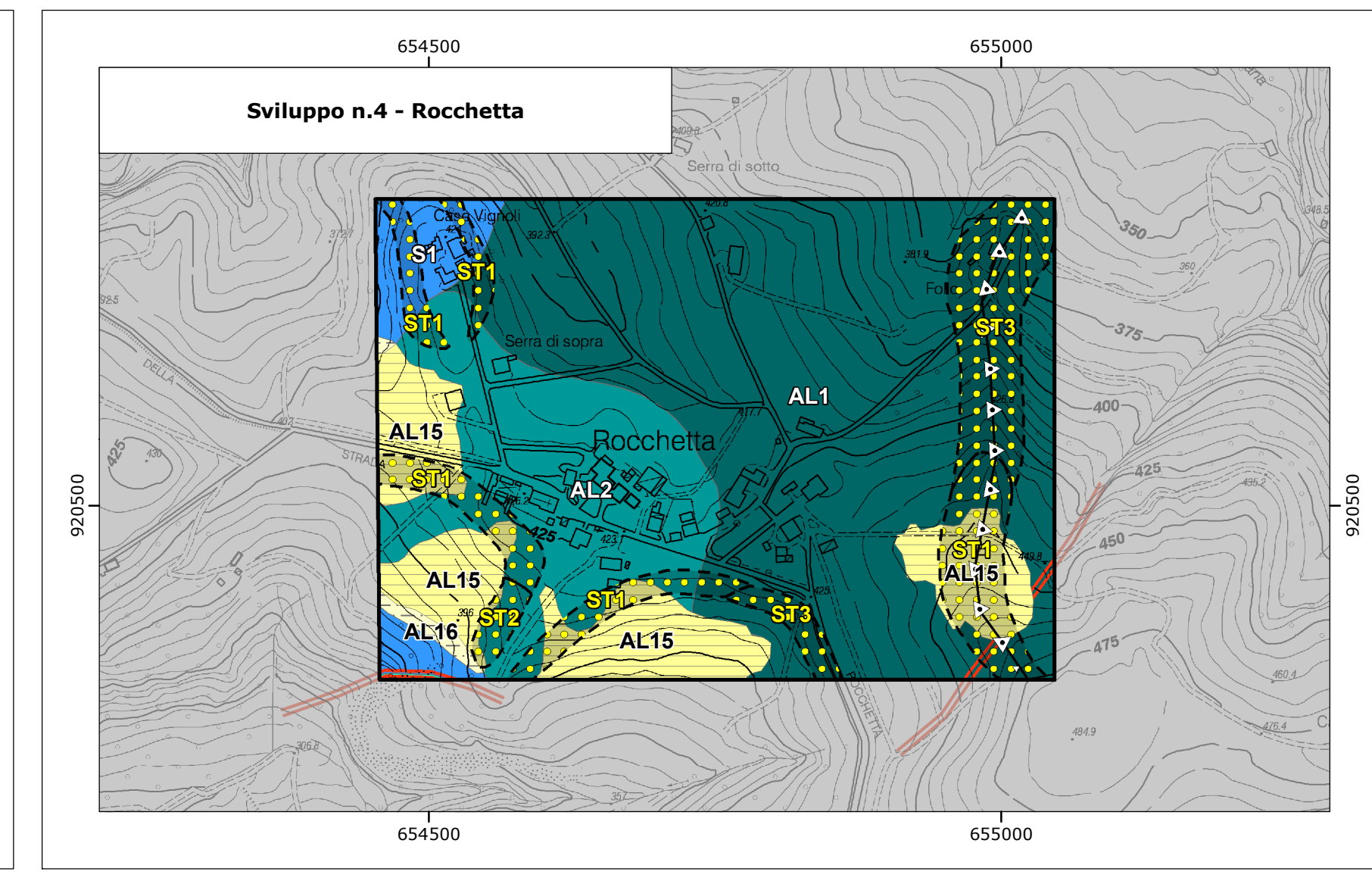
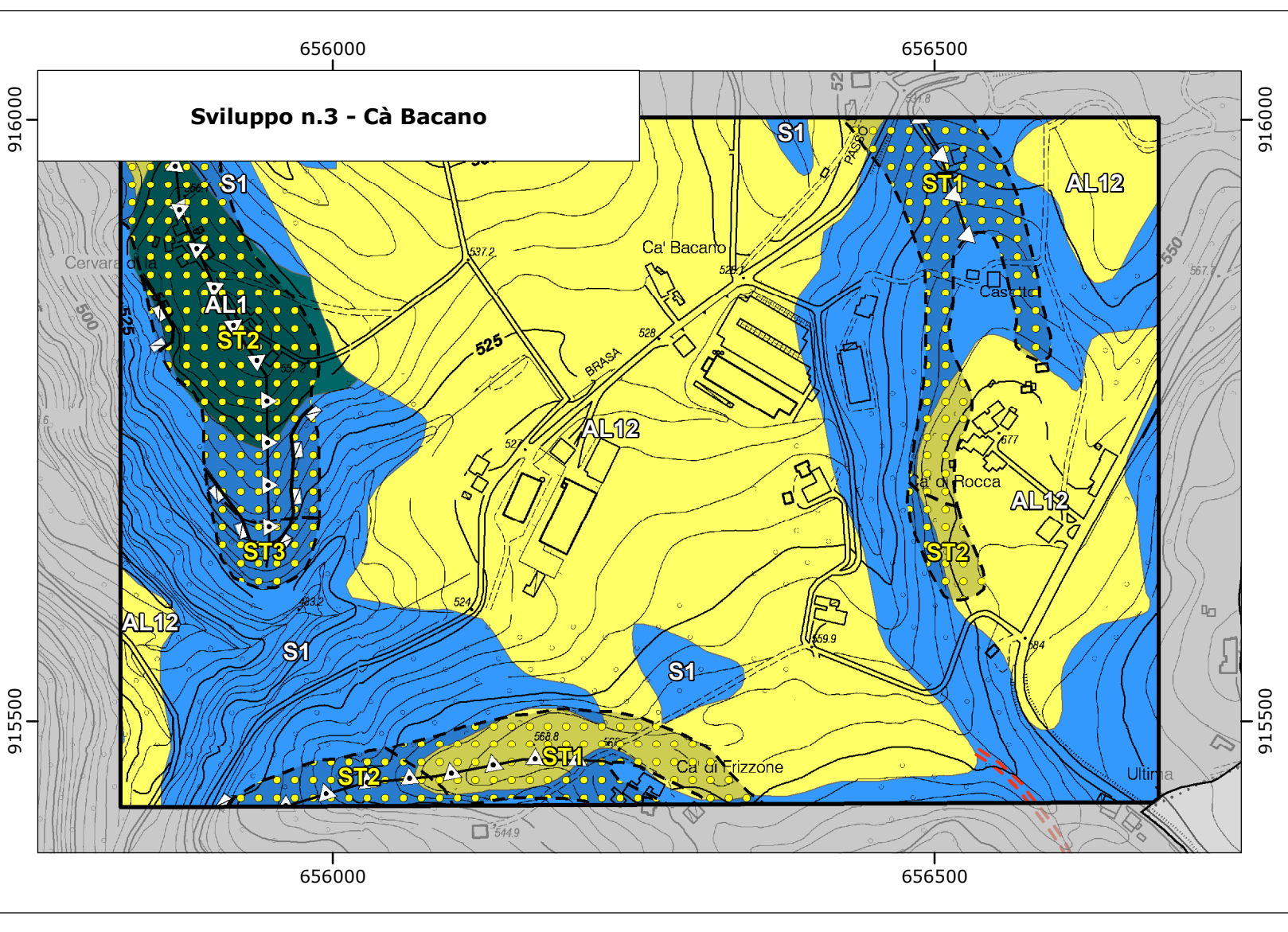
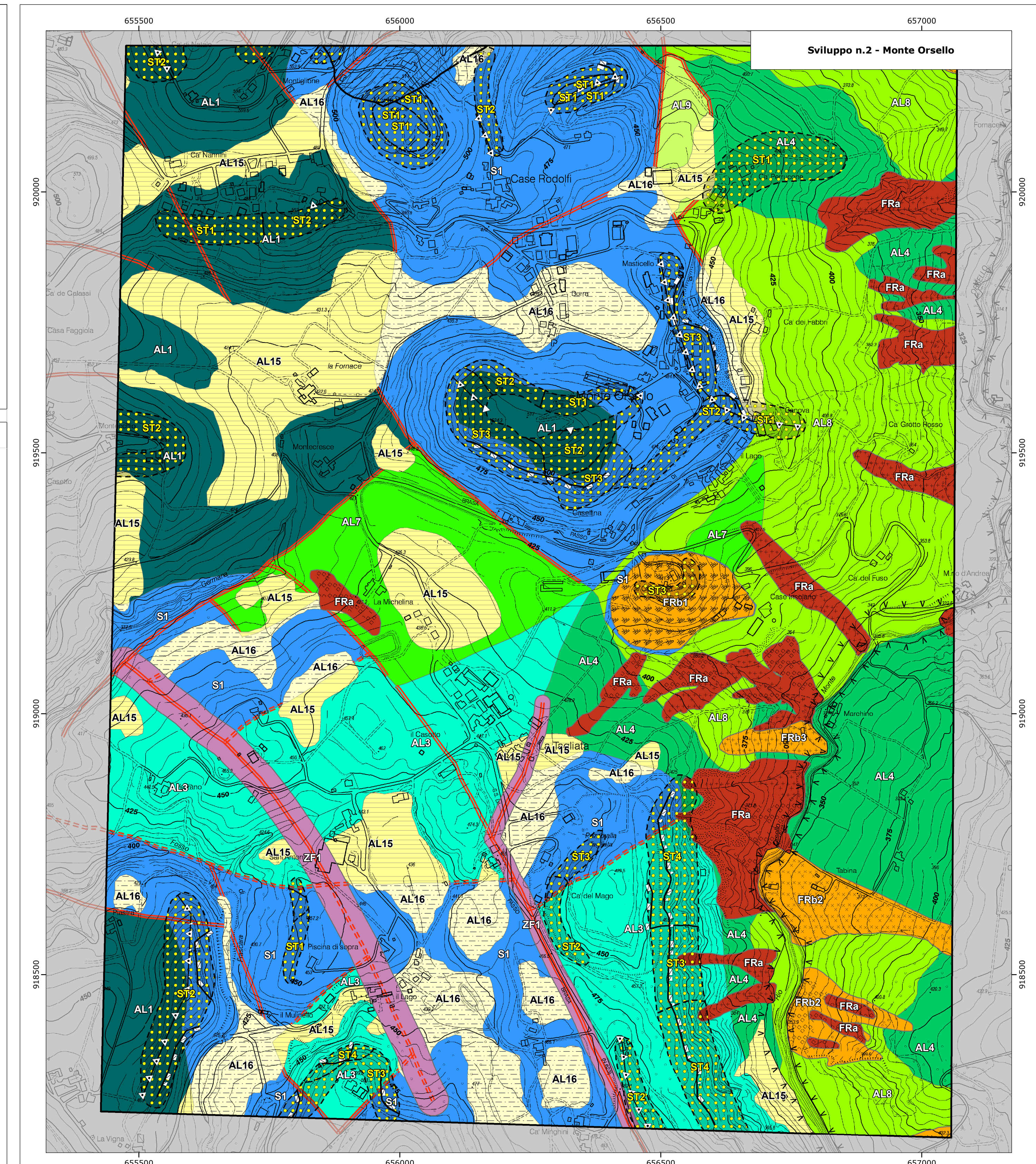
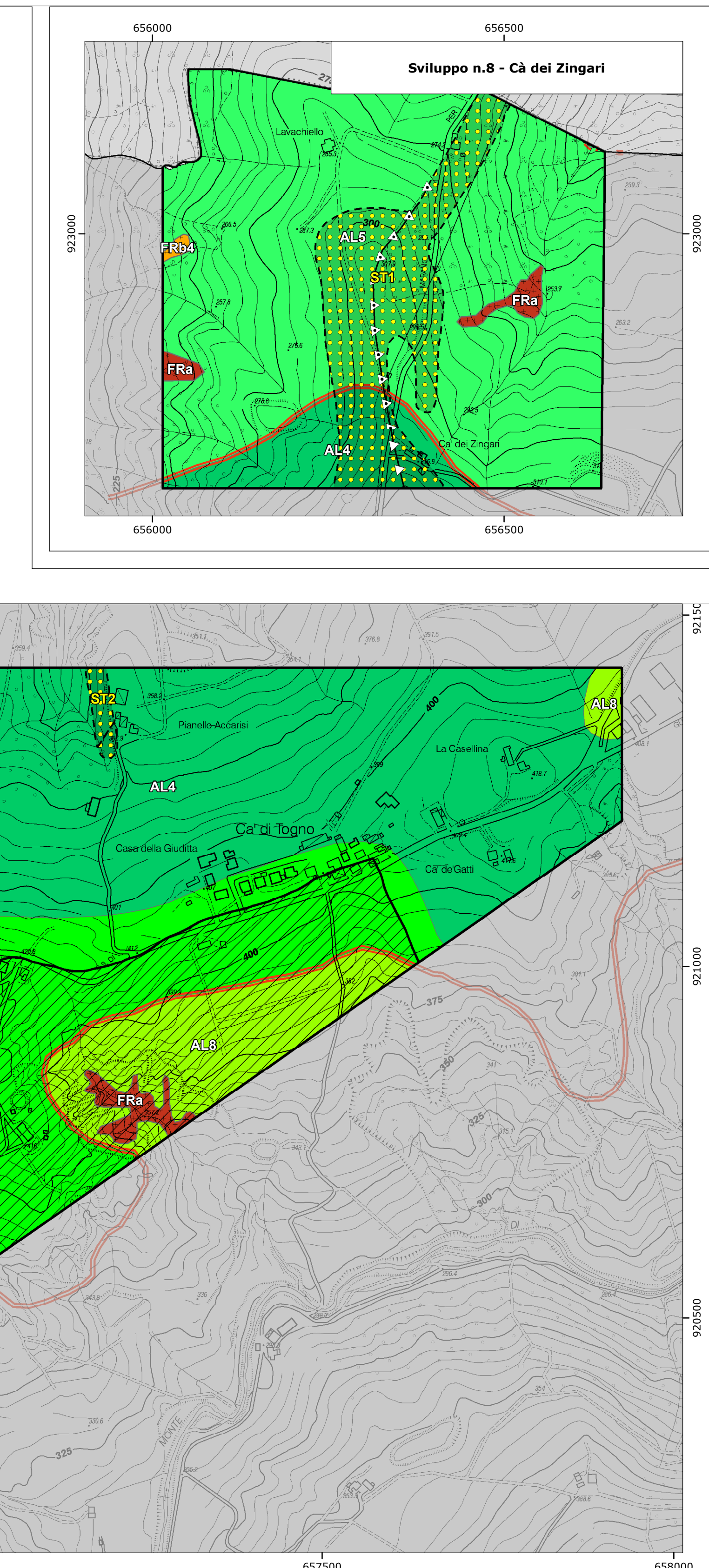
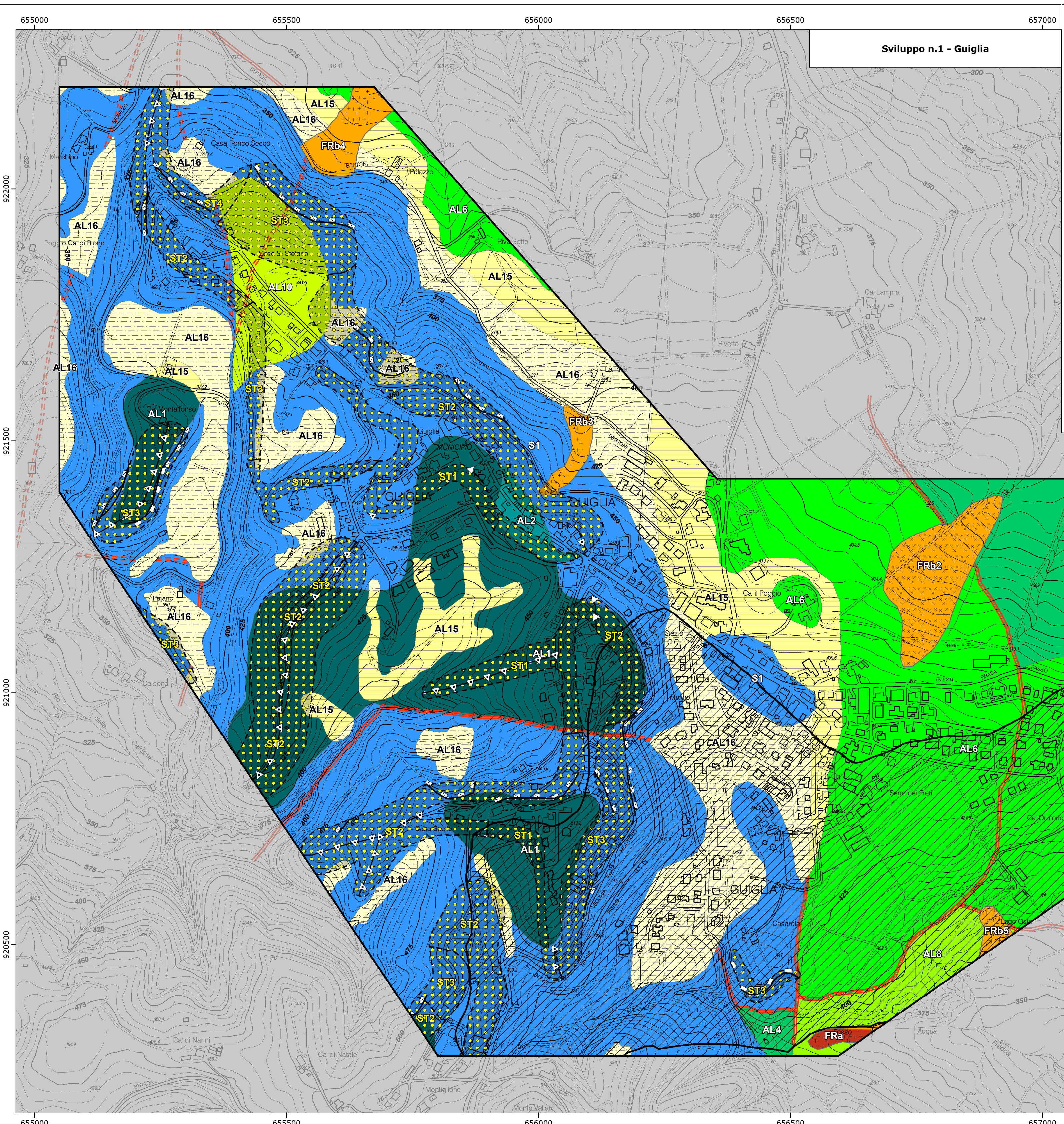
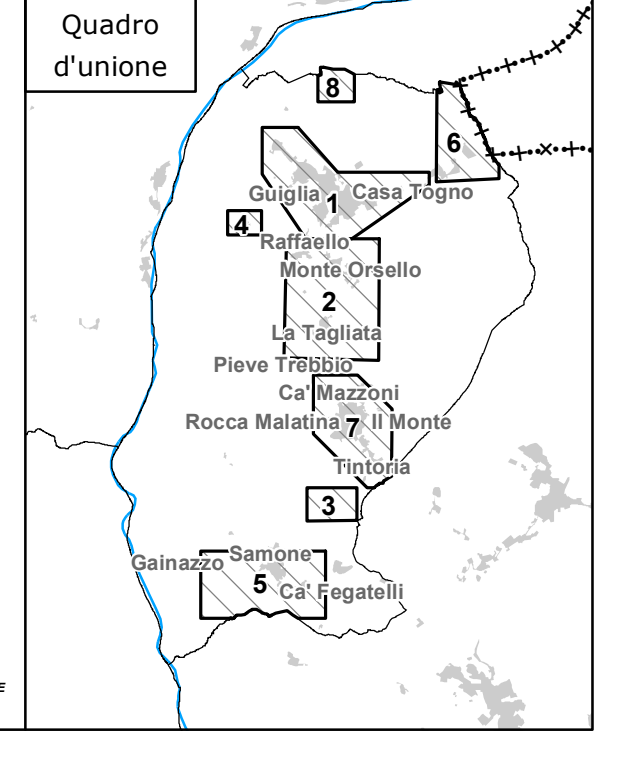


APPROFONDIMENTI DI SECONDO LIVELLO
QC.02.1.2.3 FATTORI DI AMPLIFICAZIONE
 Scala 1:5.000

GRUPPO DI LAVORO
 Ufficio tecnico comunale: Provincia di Modena
 Responsabile: Francesca Vocellari
 Servizio Urbanistica e S.I.T.
 Responsabile: Antonello Mancardi
 Collaboratori: Corrado Uglietti, Amelio Frealini, Barbara Mengoli

MICROZONAZIONE SISMICA
 Studio geologico CENTROED: Provincia di Modena
 Proprietà: Gian Pietro Mazzetti U.O. Cartografia e S.I.T.
 Collaboratori: Stefano Gili, Andrea Arizzi, Mauro Mazzetti
 Sistema Informativo Territoriale:
 Responsabile: Corrado Uglietti
 Studio realizzato con il contributo di GRUPPOPCP 2007/2018. Coordinamento della Regione Emilia Romagna - Servizio Geologico, Sismico e dei Suoni - Luca Martelli

IL SINDACO: Monica Amici



VOCI DI LEGENDA

ZONE STABILI
 F.A. P.G.A. / F.A. IS 0.1-0.5 / F.A. IS 0.5-1

Informazioni sul substrato

Litologia dei terreni di copertura

Rocce allentate

Scale: 0-2m, 0-5m, 0-10m, 0-15m, 0-20m, 0-25m, 0-30m, 0-35m, 0-40m, 0-45m, 0-50m, 0-55m, 0-60m, 0-65m, 0-70m, 0-75m, 0-80m, 0-85m, 0-90m, 0-95m, 0-100m, 0-105m, 0-110m, 0-115m, 0-120m, 0-125m, 0-130m, 0-135m, 0-140m, 0-145m, 0-150m, 0-155m, 0-160m, 0-165m, 0-170m, 0-175m, 0-180m, 0-185m, 0-190m, 0-195m, 0-200m, 0-205m, 0-210m, 0-215m, 0-220m, 0-225m, 0-230m, 0-235m, 0-240m, 0-245m, 0-250m, 0-255m, 0-260m, 0-265m, 0-270m, 0-275m, 0-280m, 0-285m, 0-290m, 0-295m, 0-300m, 0-305m, 0-310m, 0-315m, 0-320m, 0-325m, 0-330m, 0-335m, 0-340m, 0-345m, 0-350m, 0-355m, 0-360m, 0-365m, 0-370m, 0-375m, 0-380m, 0-385m, 0-390m, 0-395m, 0-400m, 0-405m, 0-410m, 0-415m, 0-420m, 0-425m, 0-430m, 0-435m, 0-440m, 0-445m, 0-450m, 0-455m, 0-460m, 0-465m, 0-470m, 0-475m, 0-480m, 0-485m, 0-490m, 0-495m, 0-500m, 0-505m, 0-510m, 0-515m, 0-520m, 0-525m, 0-530m, 0-535m, 0-540m, 0-545m, 0-550m, 0-555m, 0-560m, 0-565m, 0-570m, 0-575m, 0-580m, 0-585m, 0-590m, 0-595m, 0-600m, 0-605m, 0-610m, 0-615m, 0-620m, 0-625m, 0-630m, 0-635m, 0-640m, 0-645m, 0-650m, 0-655m, 0-660m, 0-665m, 0-670m, 0-675m, 0-680m, 0-685m, 0-690m, 0-695m, 0-700m, 0-705m, 0-710m, 0-715m, 0-720m, 0-725m, 0-730m, 0-735m, 0-740m, 0-745m, 0-750m, 0-755m, 0-760m, 0-765m, 0-770m, 0-775m, 0-780m, 0-785m, 0-790m, 0-795m, 0-800m, 0-805m, 0-810m, 0-815m, 0-820m, 0-825m, 0-830m, 0-835m, 0-840m, 0-845m, 0-850m, 0-855m, 0-860m, 0-865m, 0-870m, 0-875m, 0-880m, 0-885m, 0-890m, 0-895m, 0-900m, 0-905m, 0-910m, 0-915m, 0-920m, 0-925m, 0-930m, 0-935m, 0-940m, 0-945m, 0-950m, 0-955m, 0-960m, 0-965m, 0-970m, 0-975m, 0-980m, 0-985m, 0-990m, 0-995m, 1000m.

ZONE STABILI SUSCETTIBILI DI AMPLIFICAZIONI LOCALI
 F.A. P.G.A. / F.A. IS 0.1-0.5 / F.A. IS 0.5-1

Scale: 0-2m, 0-5m, 0-10m, 0-15m, 0-20m, 0-25m, 0-30m, 0-35m, 0-40m, 0-45m, 0-50m, 0-55m, 0-60m, 0-65m, 0-70m, 0-75m, 0-80m, 0-85m, 0-90m, 0-95m, 0-100m, 0-105m, 0-110m, 0-115m, 0-120m, 0-125m, 0-130m, 0-135m, 0-140m, 0-145m, 0-150m, 0-155m, 0-160m, 0-165m, 0-170m, 0-175m, 0-180m, 0-185m, 0-190m, 0-195m, 0-200m, 0-205m, 0-210m, 0-215m, 0-220m, 0-225m, 0-230m, 0-235m, 0-240m, 0-245m, 0-250m, 0-255m, 0-260m, 0-265m, 0-270m, 0-275m, 0-280m, 0-285m, 0-290m, 0-295m, 0-300m, 0-305m, 0-310m, 0-315m, 0-320m, 0-325m, 0-330m, 0-335m, 0-340m, 0-345m, 0-350m, 0-355m, 0-360m, 0-365m, 0-370m, 0-375m, 0-380m, 0-385m, 0-390m, 0-395m, 0-400m, 0-405m, 0-410m, 0-415m, 0-420m, 0-425m, 0-430m, 0-435m, 0-440m, 0-445m, 0-450m, 0-455m, 0-460m, 0-465m, 0-470m, 0-475m, 0-480m, 0-485m, 0-490m, 0-495m, 0-500m, 0-505m, 0-510m, 0-515m, 0-520m, 0-525m, 0-530m, 0-535m, 0-540m, 0-545m, 0-550m, 0-555m, 0-560m, 0-565m, 0-570m, 0-575m, 0-580m, 0-585m, 0-590m, 0-595m, 0-600m, 0-605m, 0-610m, 0-615m, 0-620m, 0-625m, 0-630m, 0-635m, 0-640m, 0-645m, 0-650m, 0-655m, 0-660m, 0-665m, 0-670m, 0-675m, 0-680m, 0-685m, 0-690m, 0-695m, 0-700m, 0-705m, 0-710m, 0-715m, 0-720m, 0-725m, 0-730m, 0-735m, 0-740m, 0-745m, 0-750m, 0-755m, 0-760m, 0-765m, 0-770m, 0-775m, 0-780m, 0-785m, 0-790m, 0-795m, 0-800m, 0-805m, 0-810m, 0-815m, 0-820m, 0-825m, 0-830m, 0-835m, 0-840m, 0-845m, 0-850m, 0-855m, 0-860m, 0-865m, 0-870m, 0-875m, 0-880m, 0-885m, 0-890m, 0-895m, 0-900m, 0-905m, 0-910m, 0-915m, 0-920m, 0-925m, 0-930m, 0-935m, 0-940m, 0-945m, 0-950m, 0-955m, 0-960m, 0-965m, 0-970m, 0-975m, 0-980m, 0-985m, 0-990m, 0-995m, 1000m.

ZONE SUSCETTIBILI DI INSTABILITA'
 Aree sulle quali effettuare approfondimenti di III livello

Instabilità di versante (FR)

Frane potenziali (FR)

Zone ad intensa fratturazione (ZF)

Area a rischio idrogeologico molto elevato

Limiti amministrativi