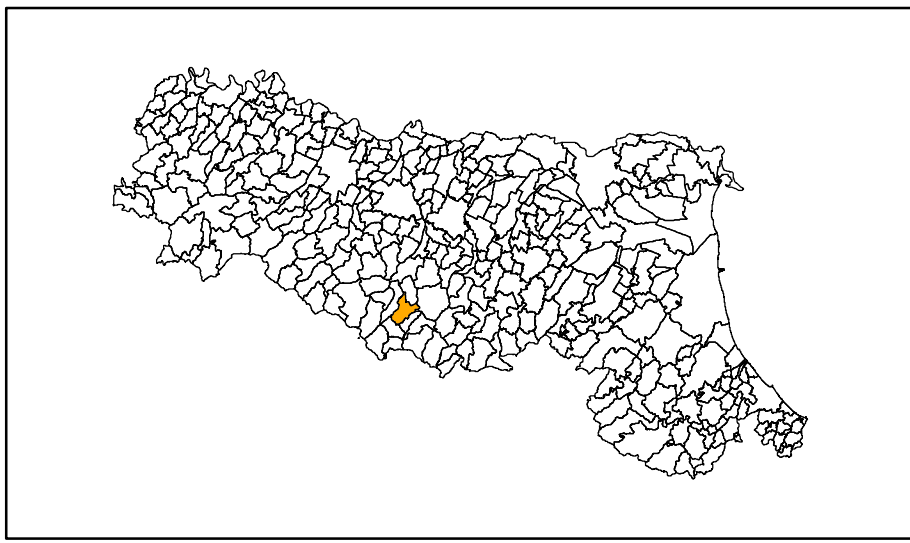


MICROZONAZIONE SISMICA

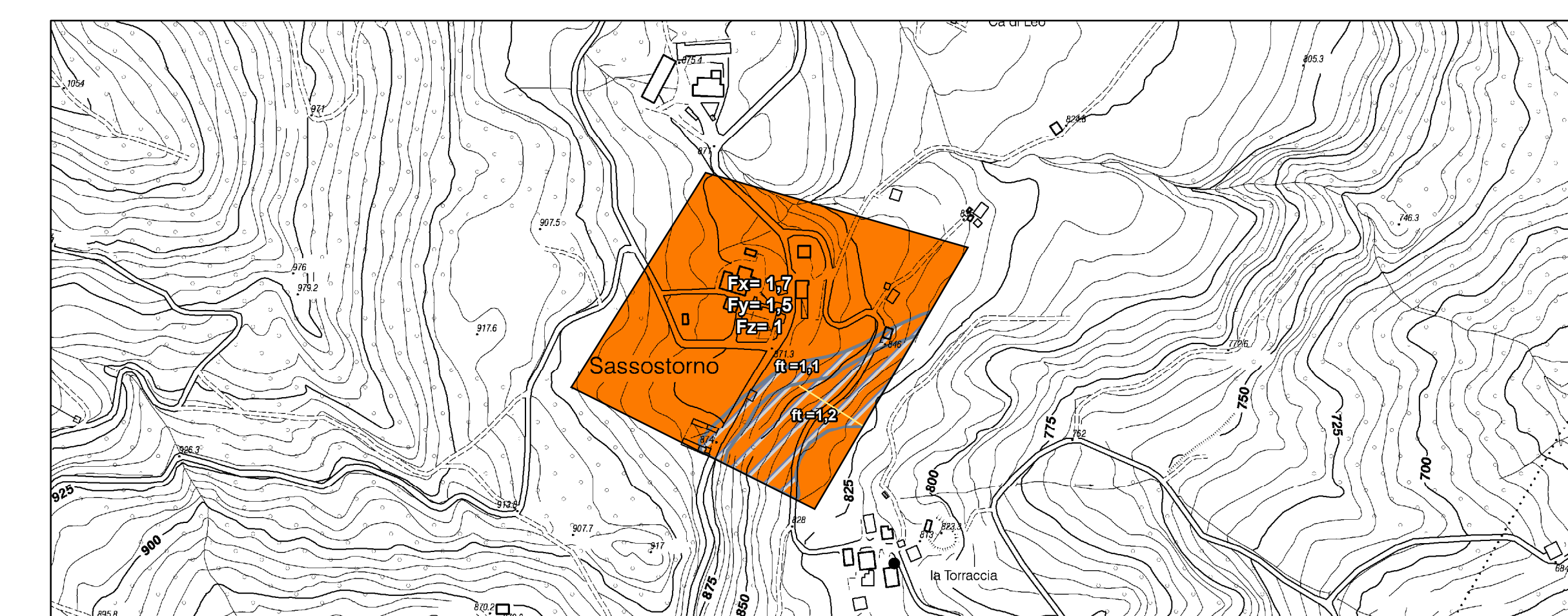
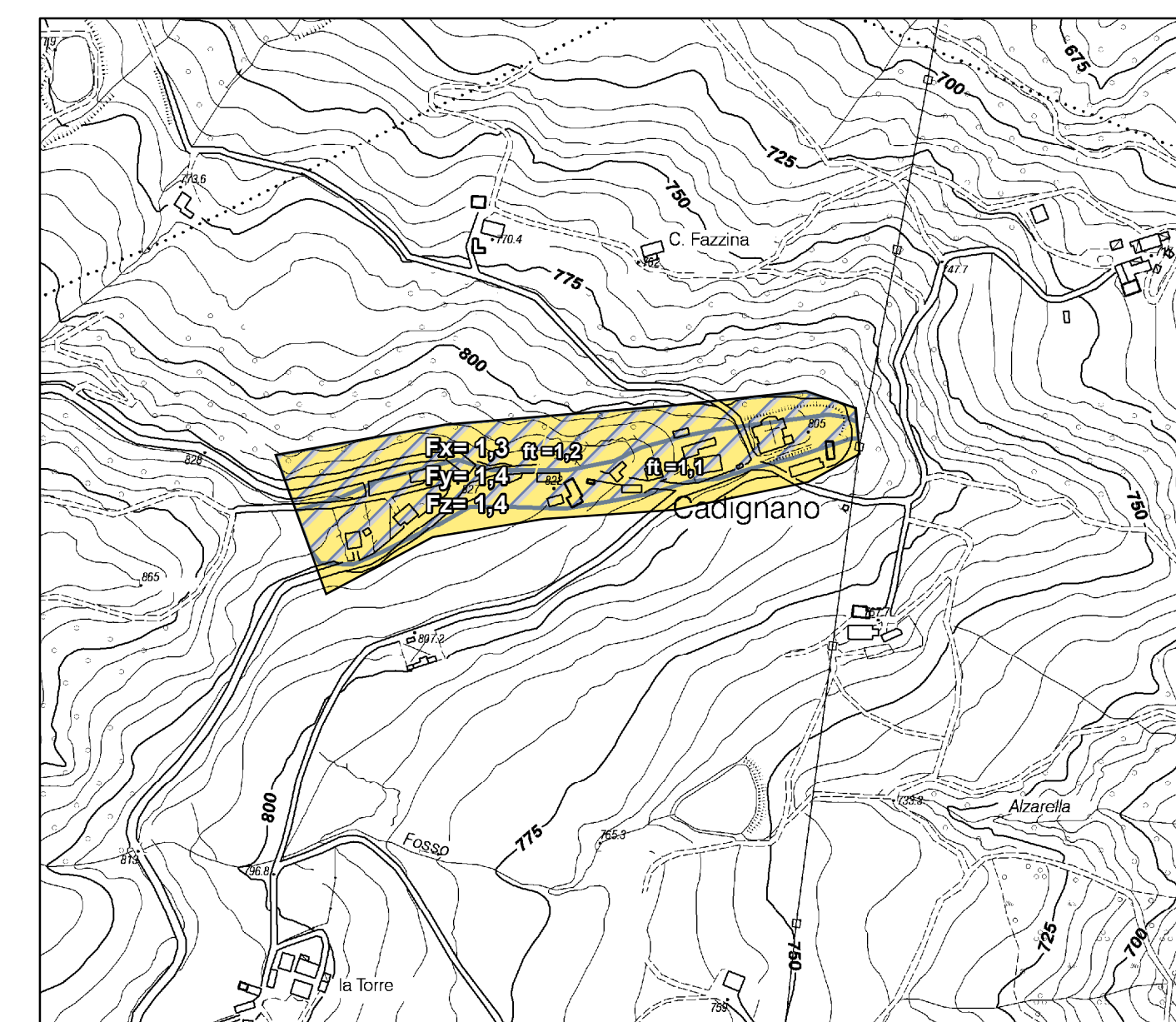
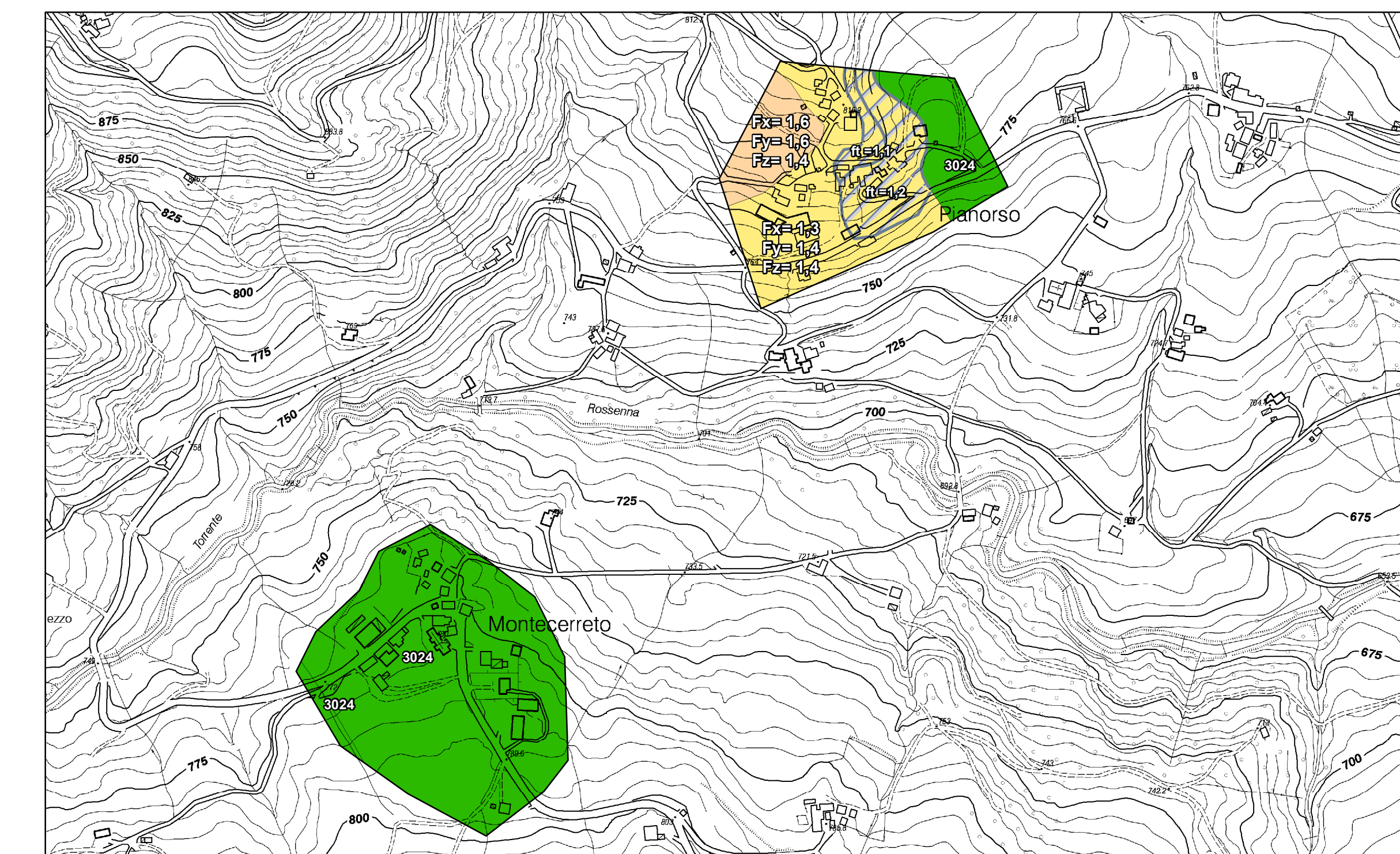
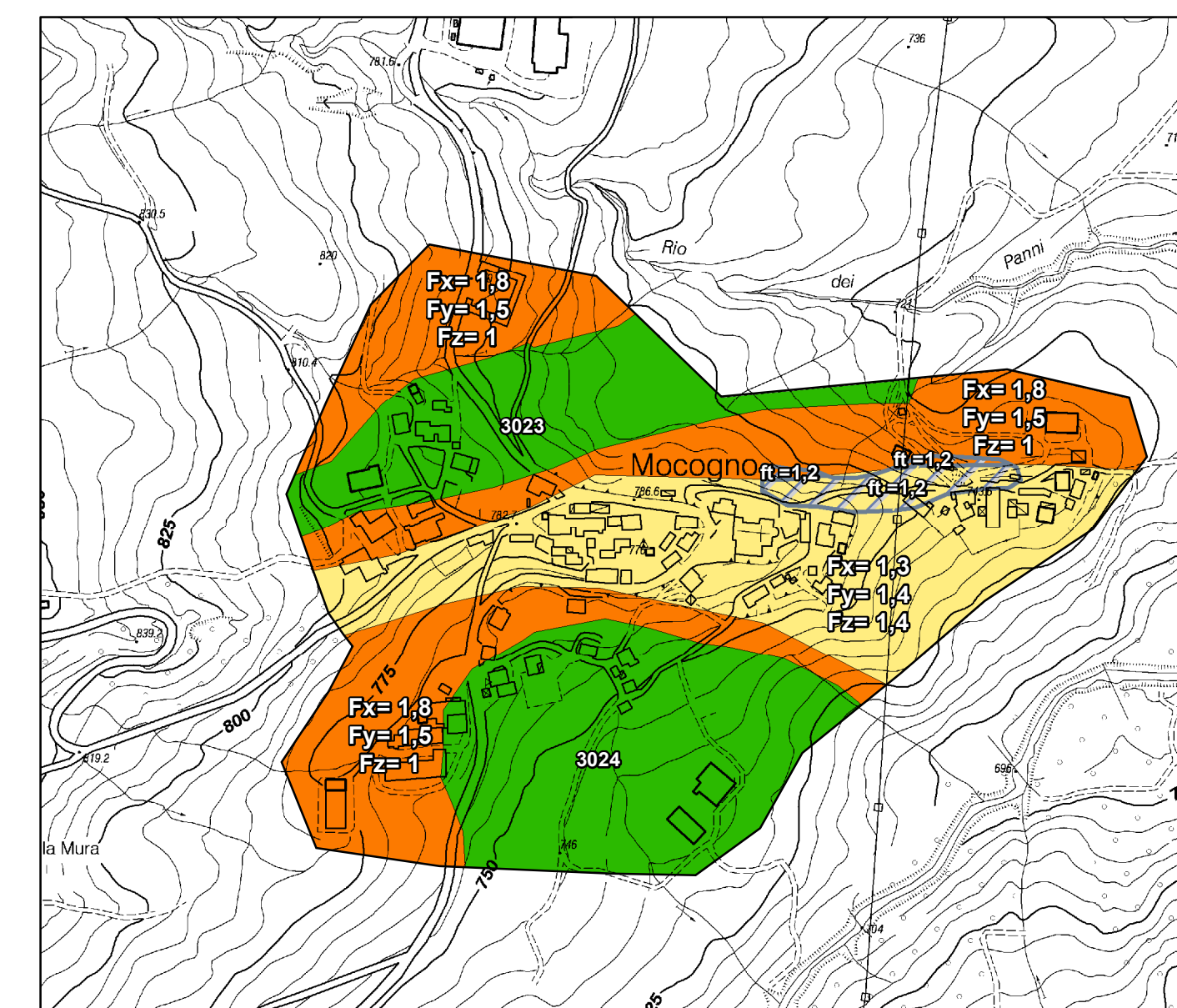
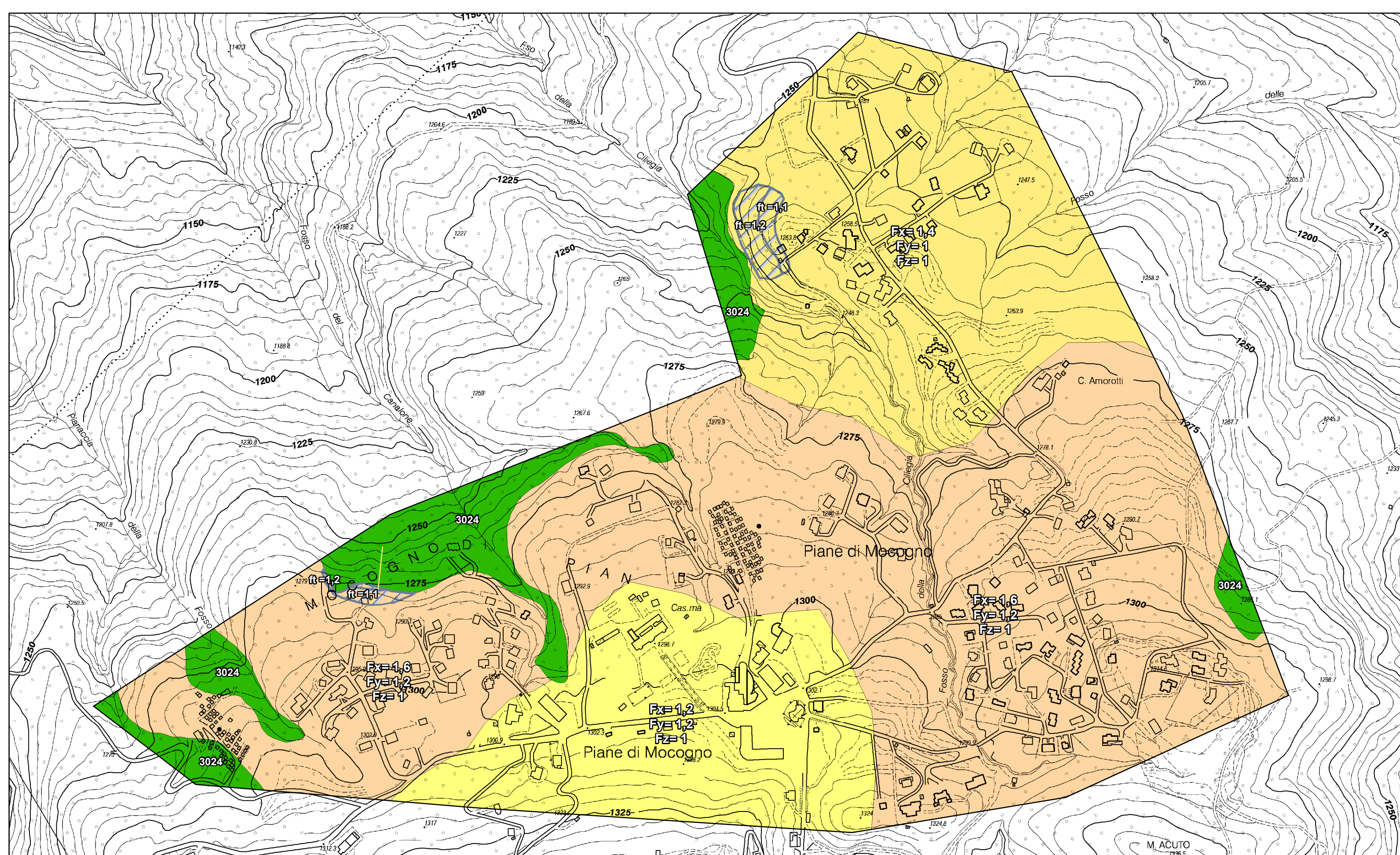
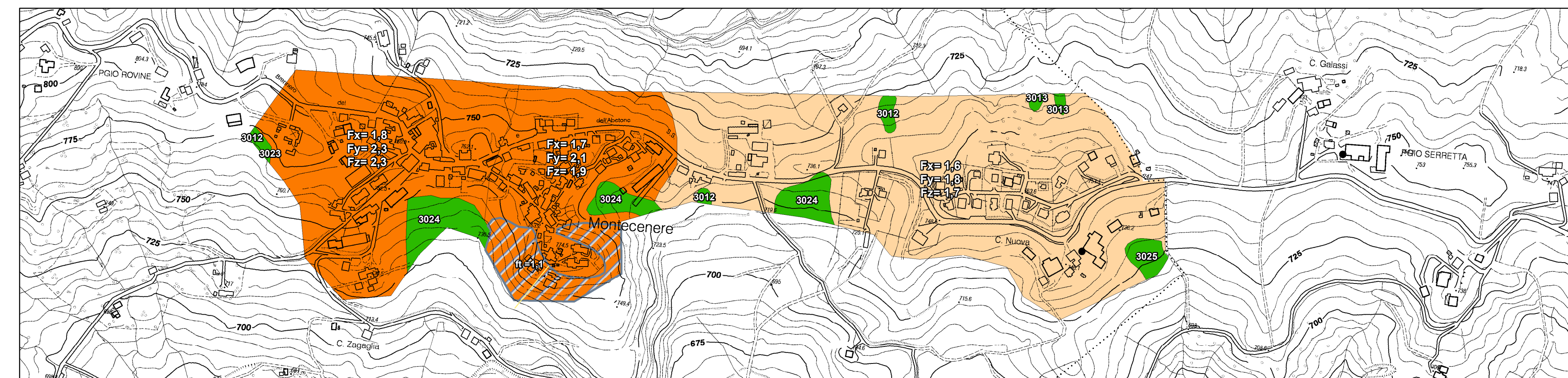
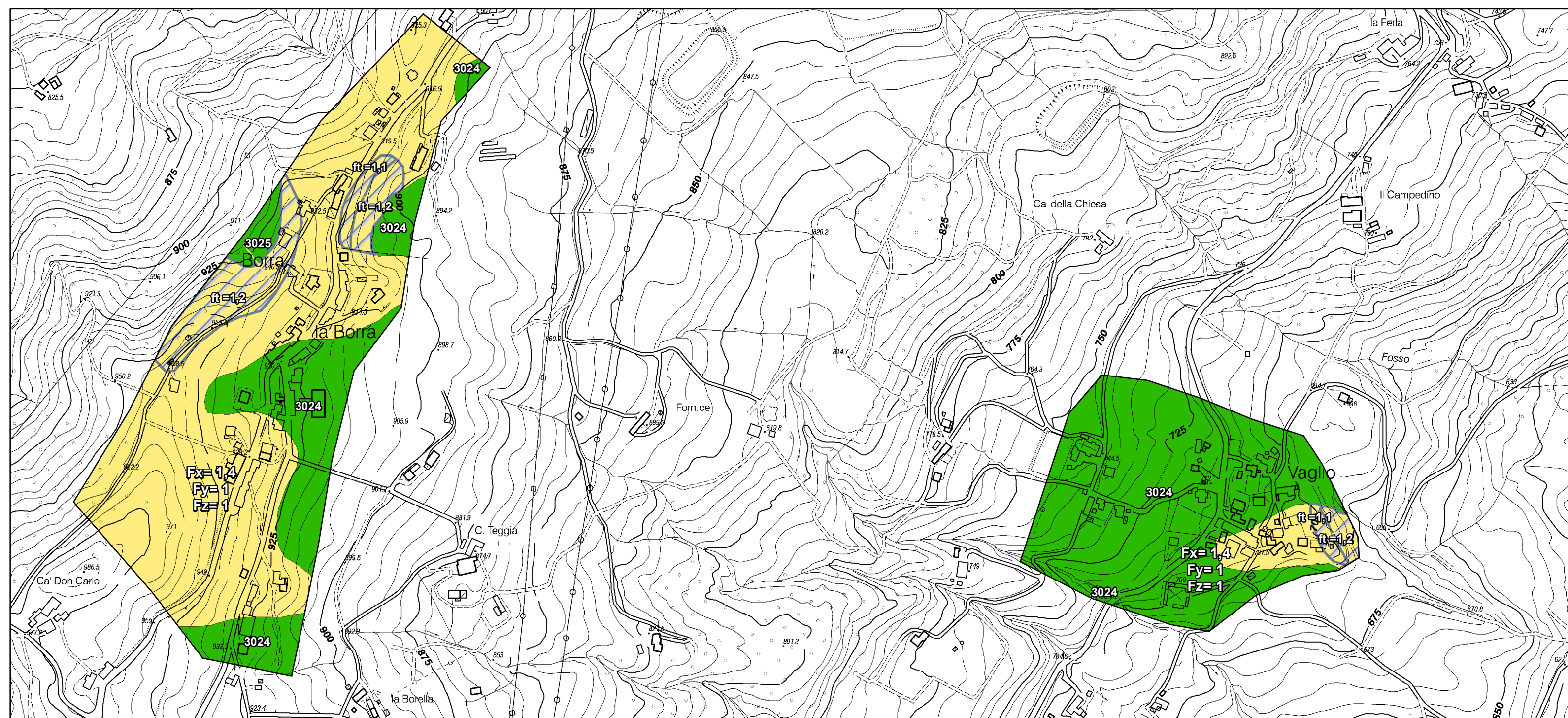
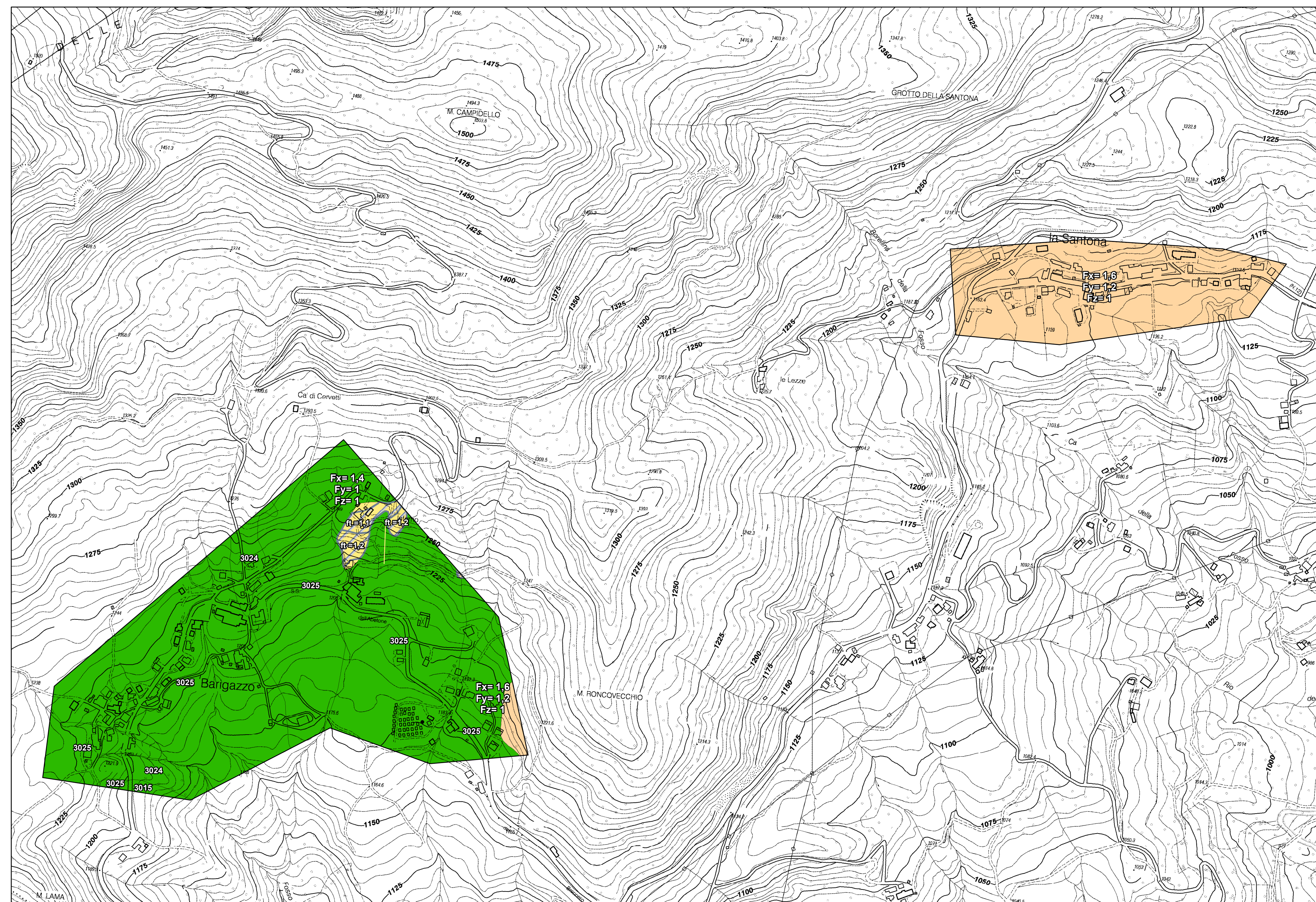
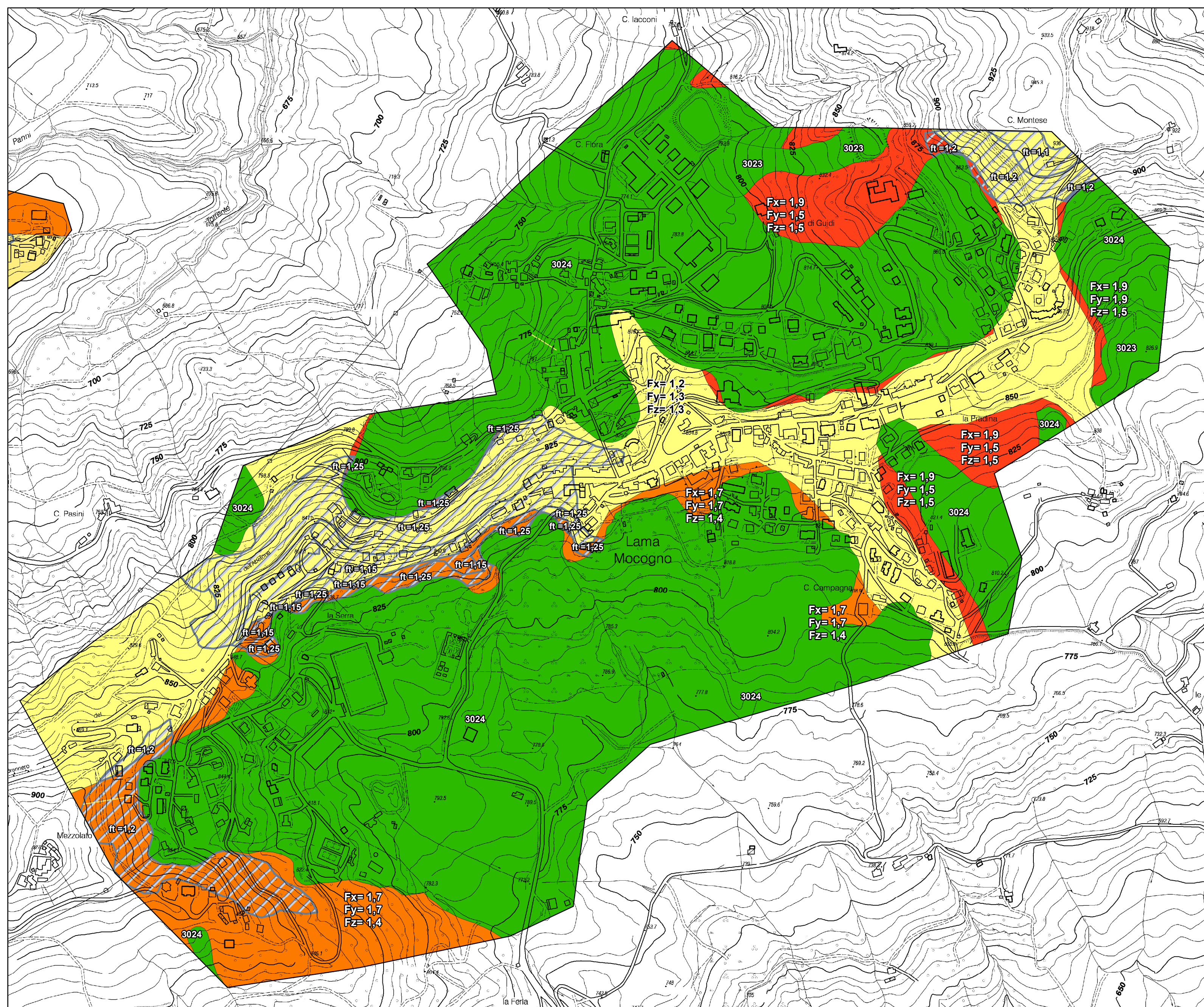
Carta di microzonazione sismica Livello 2

scala 1:5.000

Regione Emilia-Romagna
Comune di Lama Mocogno



Regione	Soggetto realizzatore	Data
Emilia Romagna	Studio Geologia Tecnica Dott. Geol. Lorenzo Del Maschio	Ottobre 2013



Legenda

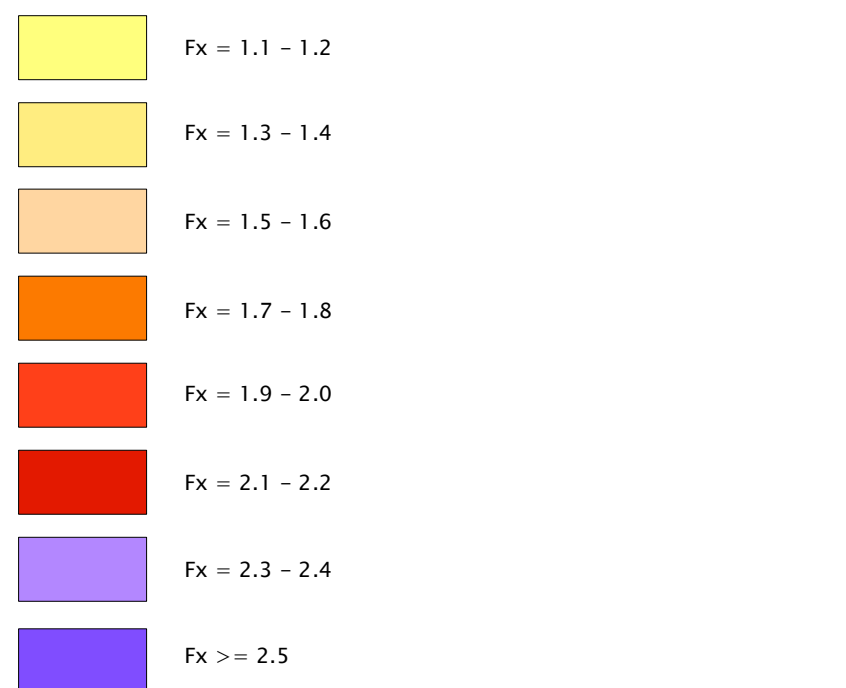
Zone stabili

Zone stabili

Zone suscettibili di instabilità

Instabilità di versante

Zone stabili suscettibili di amplificazioni locali



Traccia per gli approfondimenti delle amplificazioni topografiche

Area di amplificazione topografica

0 100 200 400 Metri

