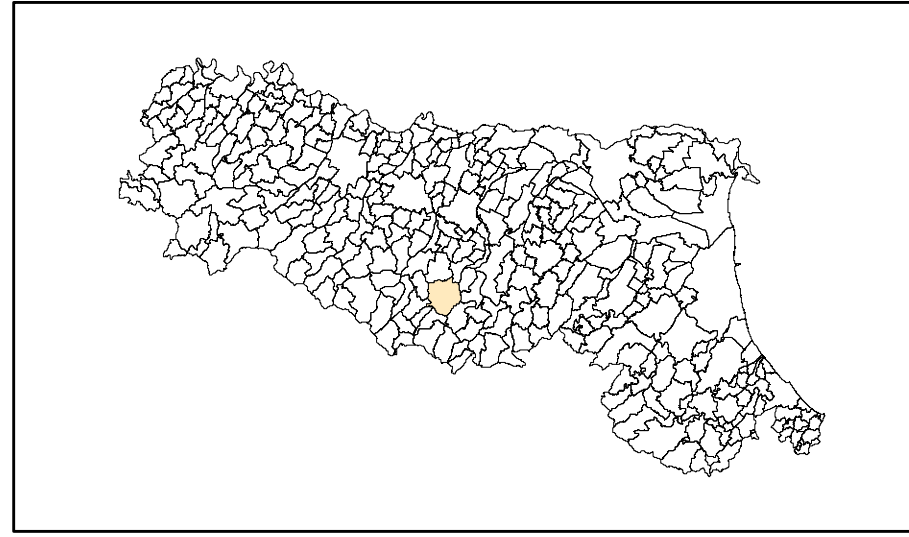


# MICROZONAZIONE SISMICA

## Carta delle VS


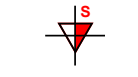


scala 1:10.000

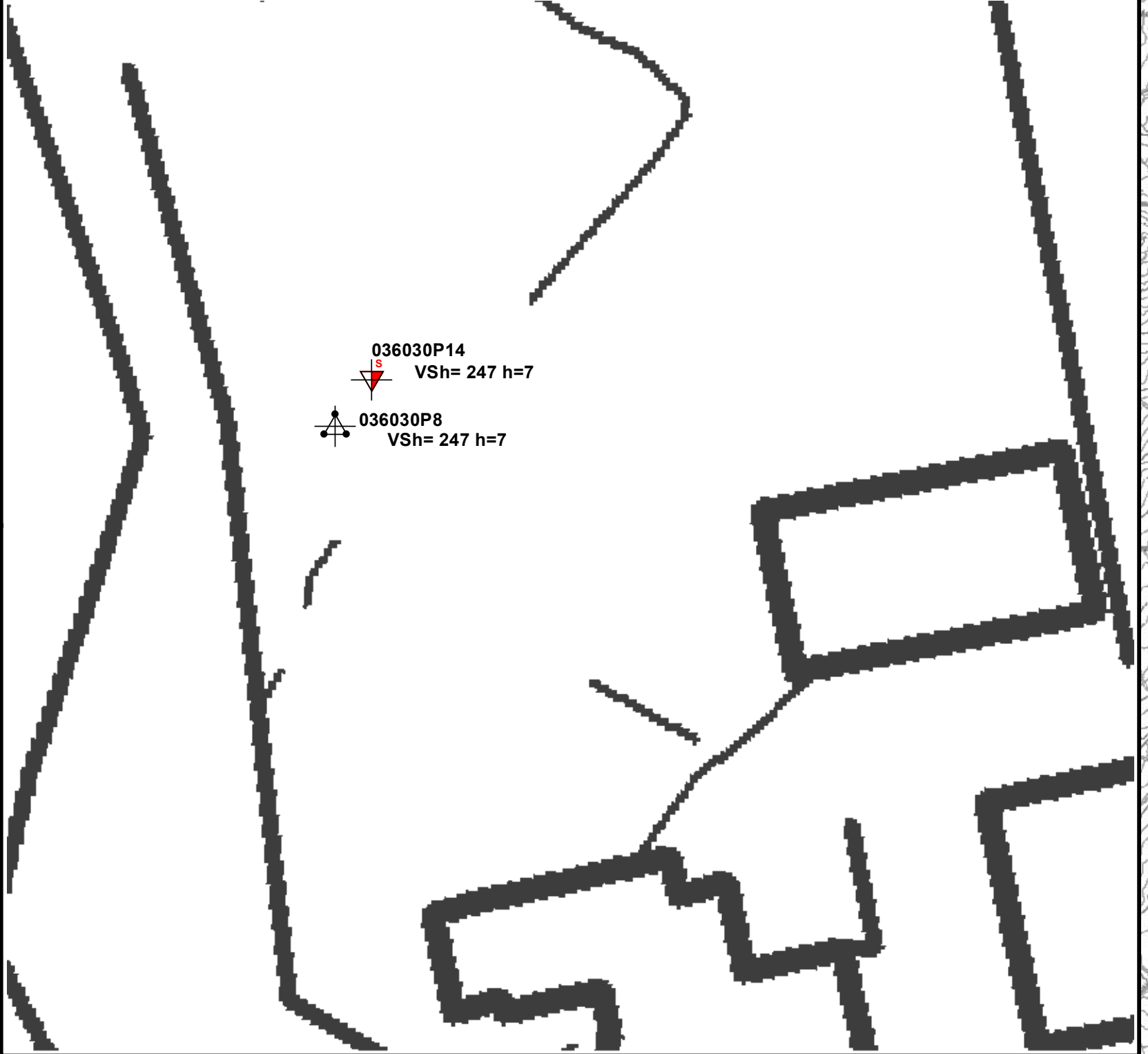
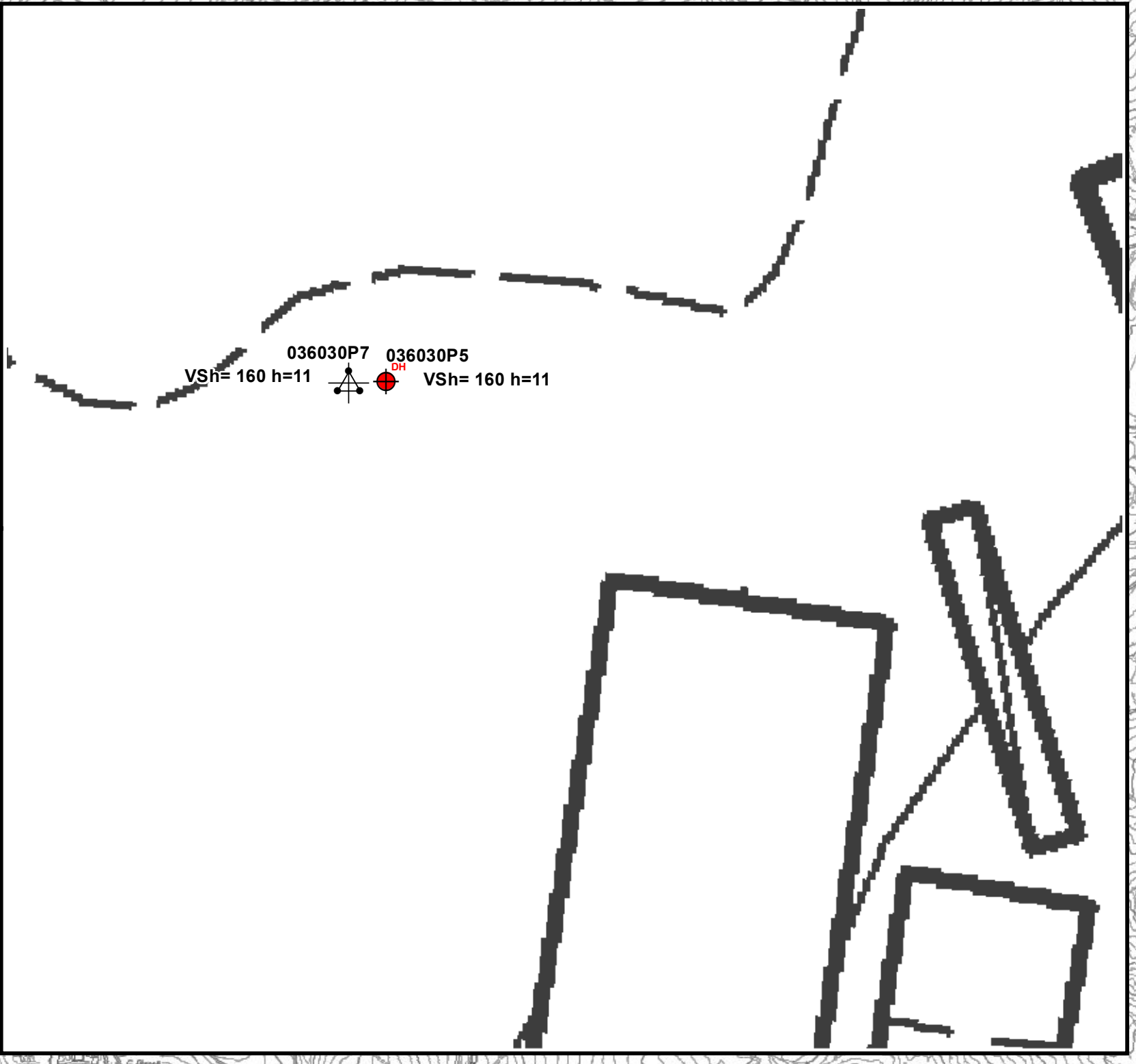
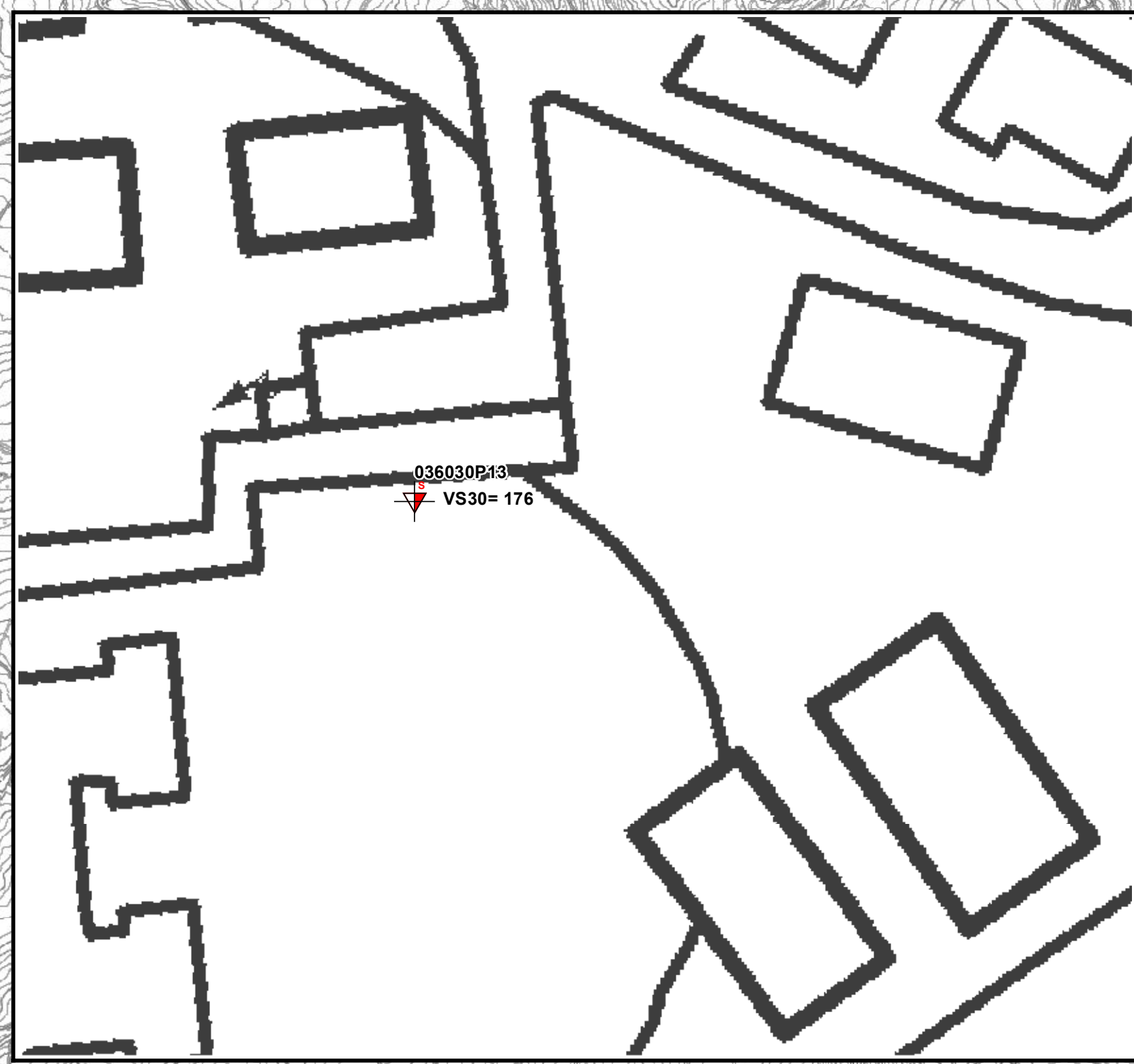
Regione Emilia-Romagna  
Comune di Pavullo nel Frignano



Regione	Soggetto realizzatore	Data
Emilia Romagna	Studio Geologia Tecnica Dott. Geol. Lorenzo Del Maschio	Aprile 2019

### Legenda

-  Prova sismica in foro tipo Downhole
-  Prova penetrometrica dinamica superpesante
-  Array sismico, ESAC/SPAC
-  Sviluppo con approfondimento di III livello



0 125 250 500 Metri

