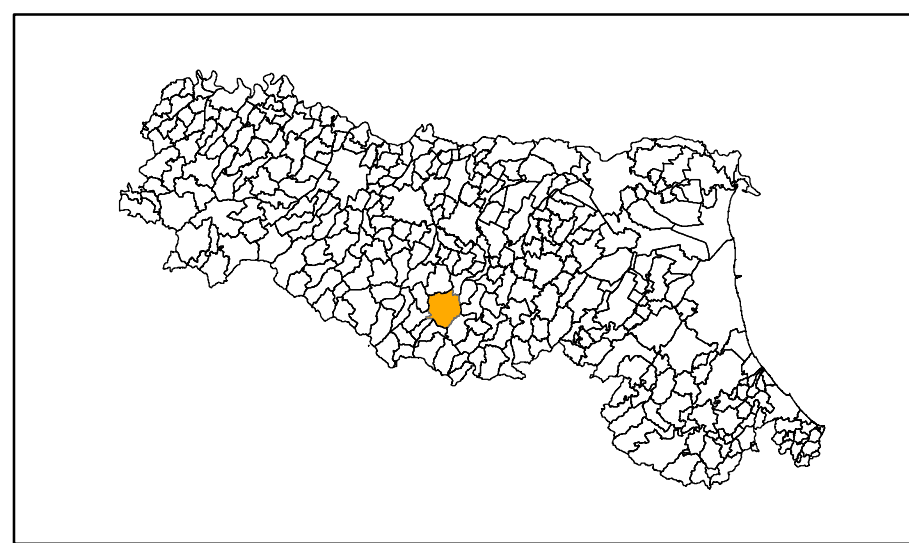


# MICROZONAZIONE SISMICA

## Carta delle indagini


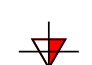
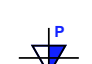
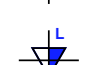
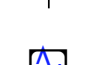


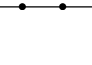
scala 1:10.000

Regione Emilia-Romagna  
Comune di Pavullo nel Frignano



Regione	Soggetto realizzatore	Data
Emilia Romagna	Studio Geologia Tecnica Dott. Geol. Lorenzo Del Maschio	Ottobre 2013

### Legenda

-  Sondaggio a carotaggio continuo
-  Prova penetrometrica statica con punta meccanica (CPT)
-  Prova penetrometrica dinamica pesante
-  Prova penetrometrica dinamica leggera
-  Stazione microtremore a stazione singola
-  Trincea o pozzo esplorativo
-  MASW
-  Prova REFRACTIONMicrotremor

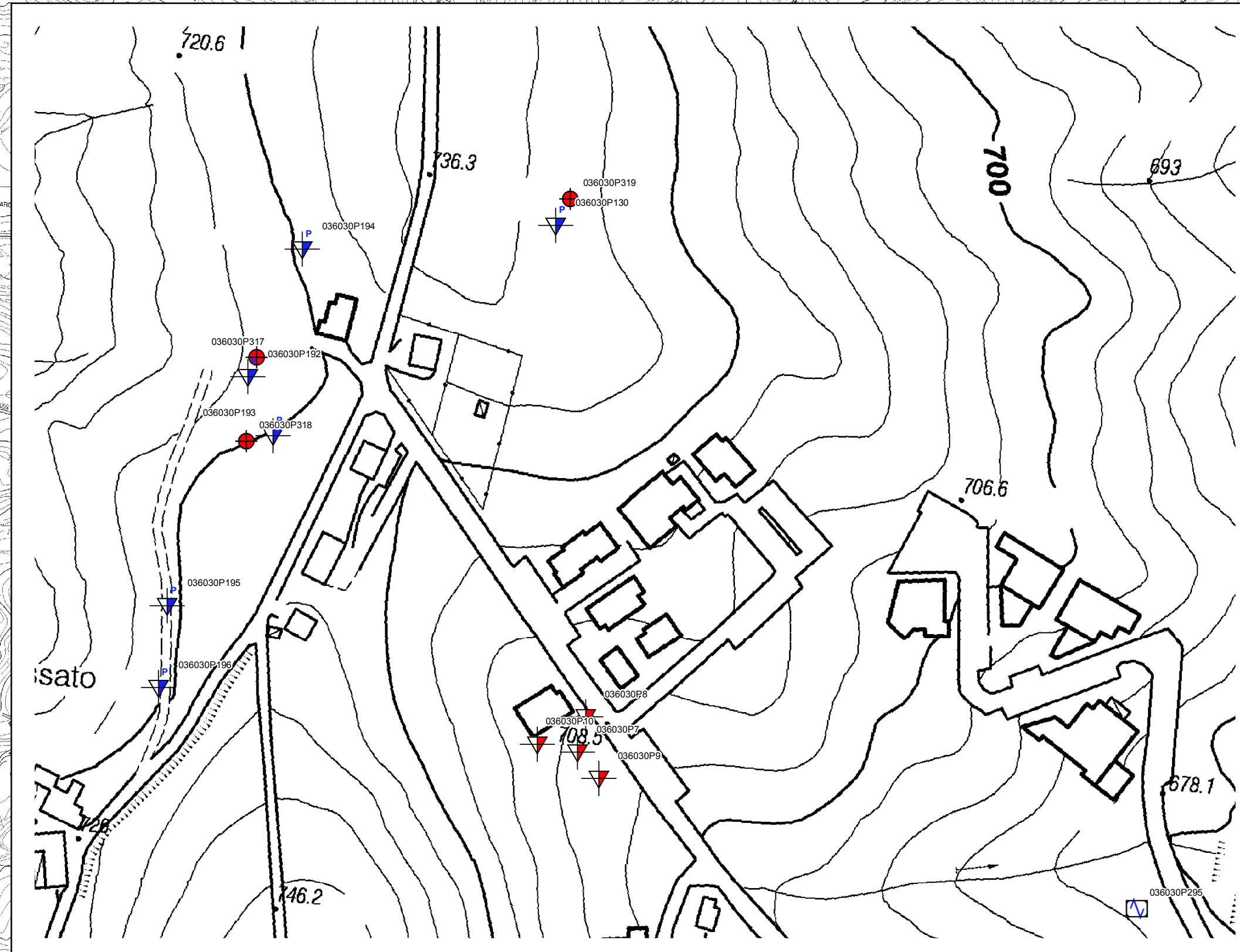
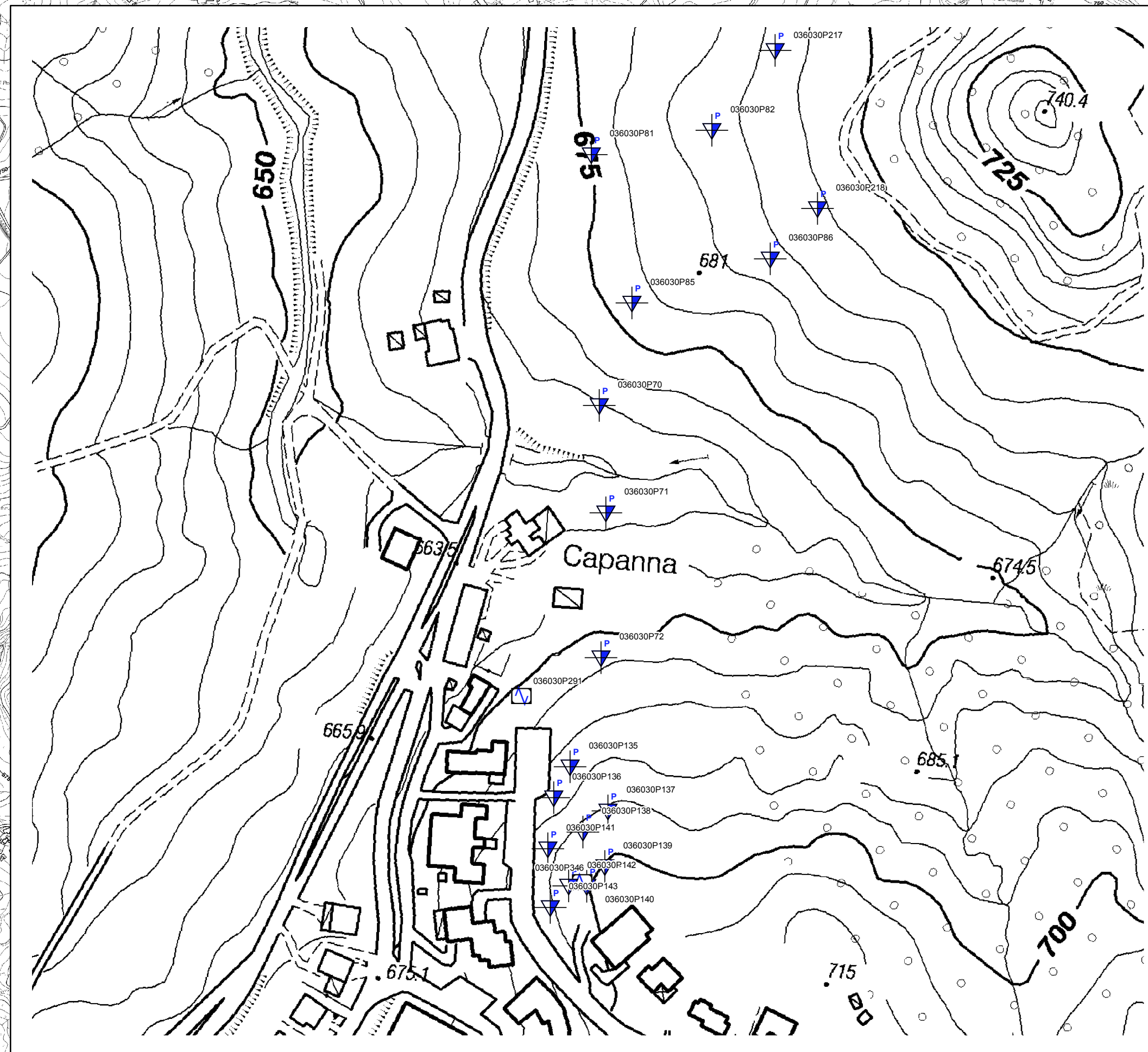
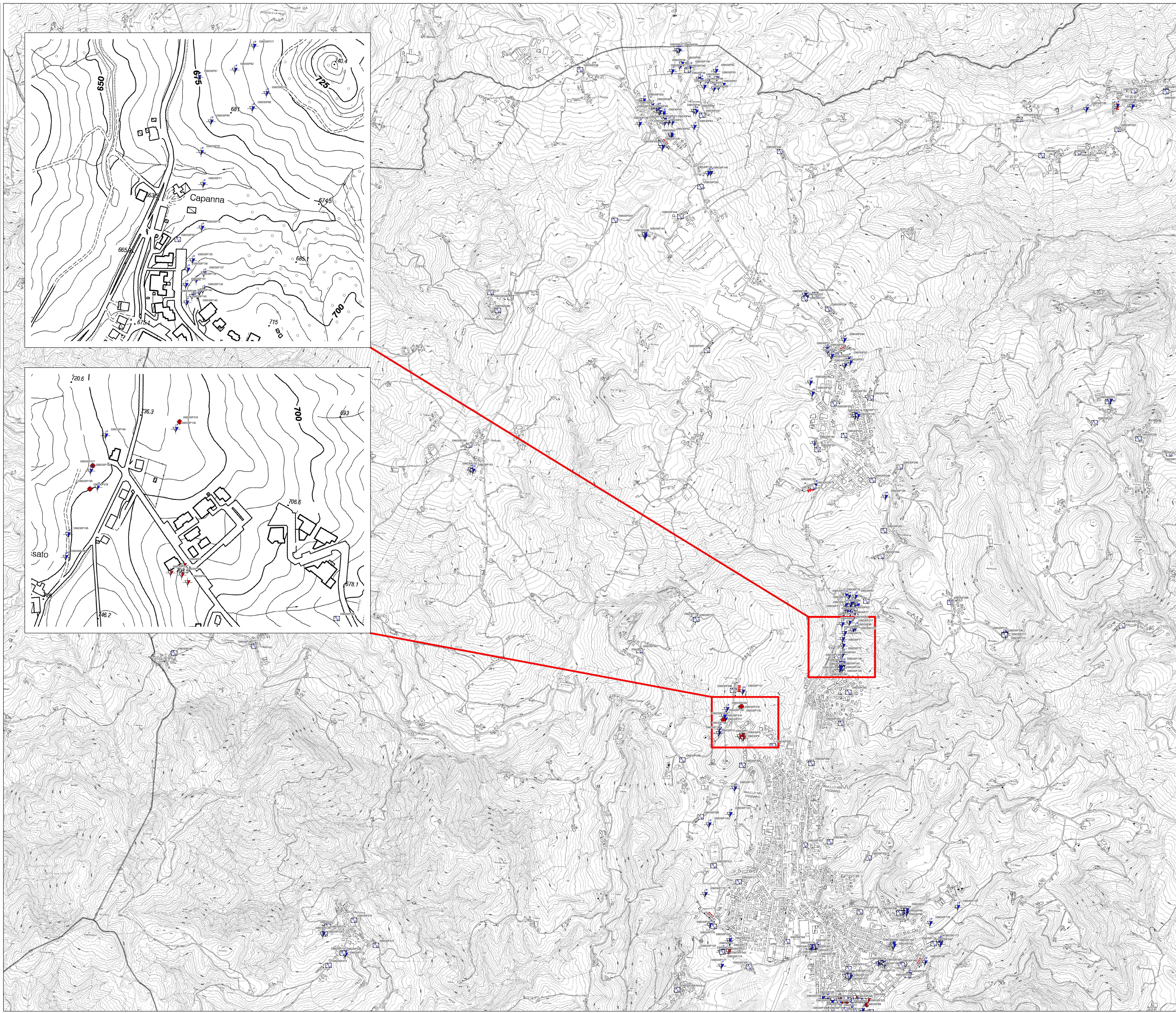
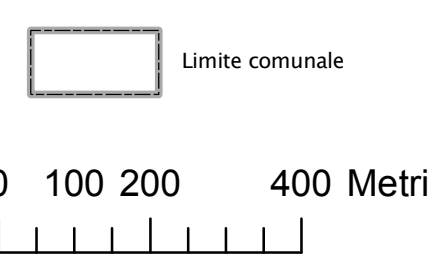


TAVOLA 3 DI 4

