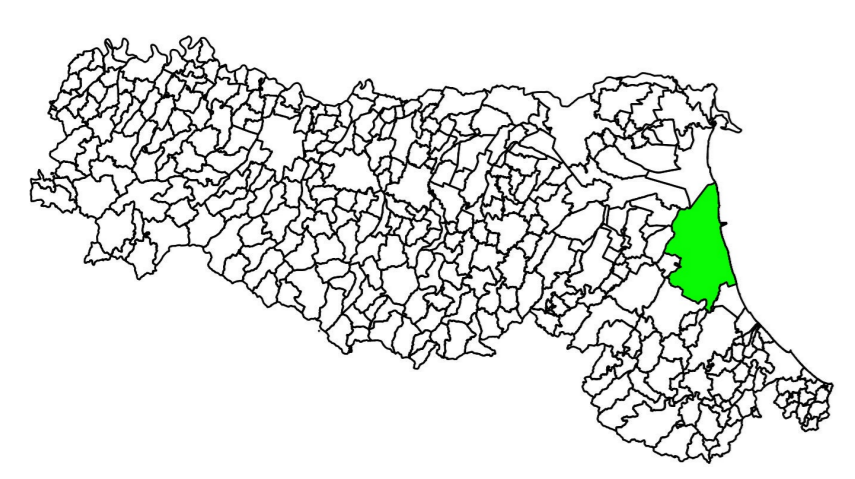


# ANALISI DELLA CONDIZIONE LIMITE PER L'EMERGENZA (CLE)

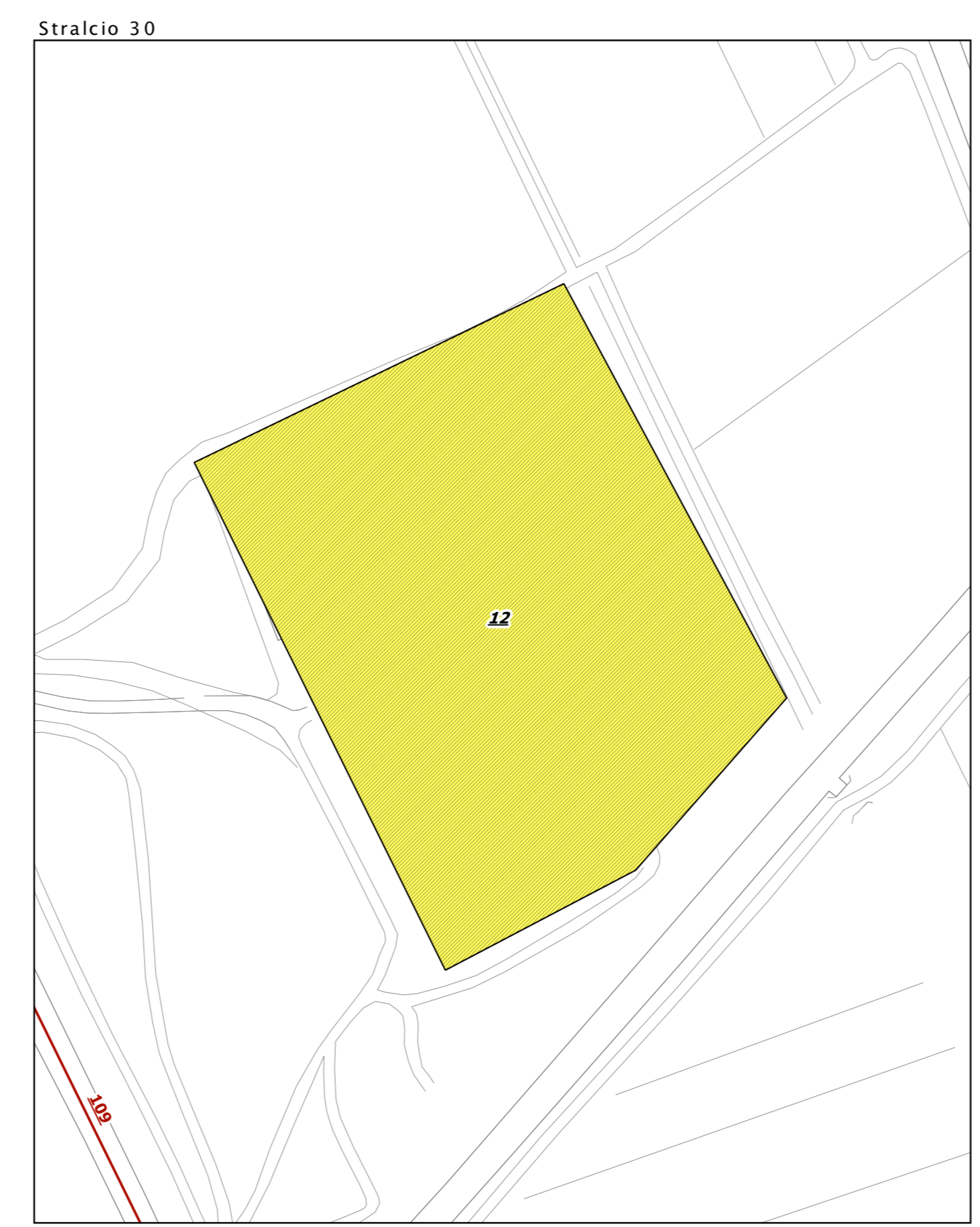
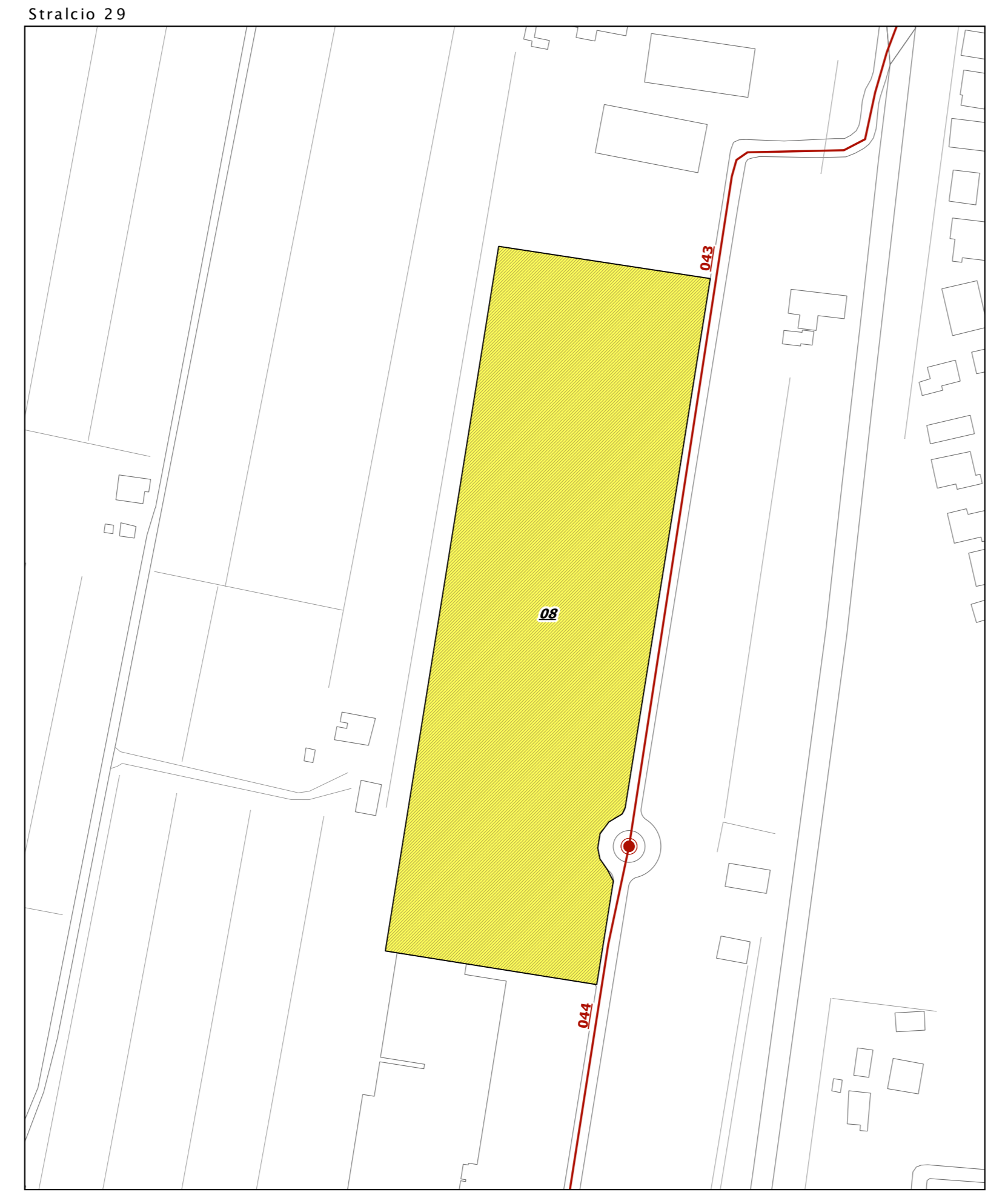
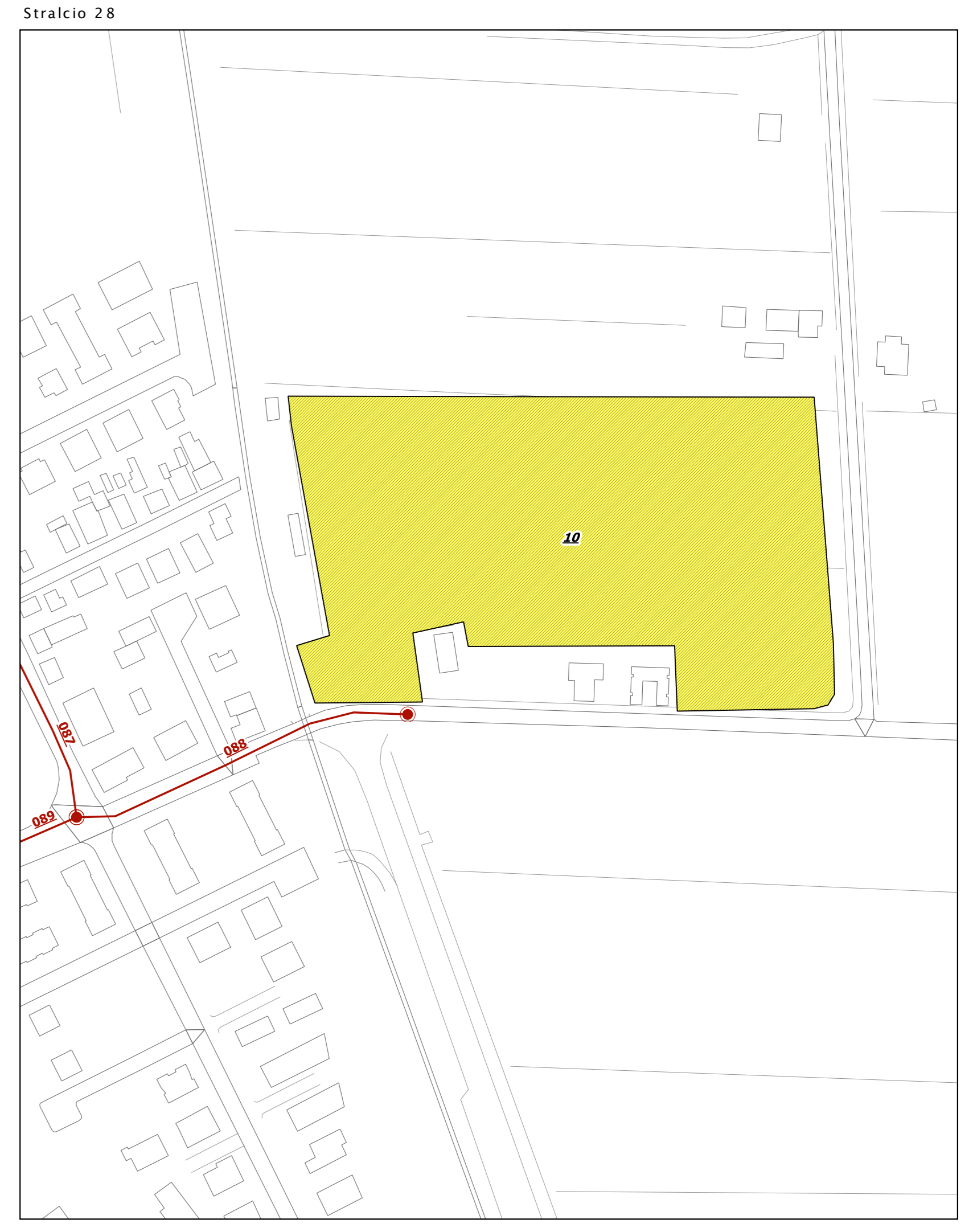
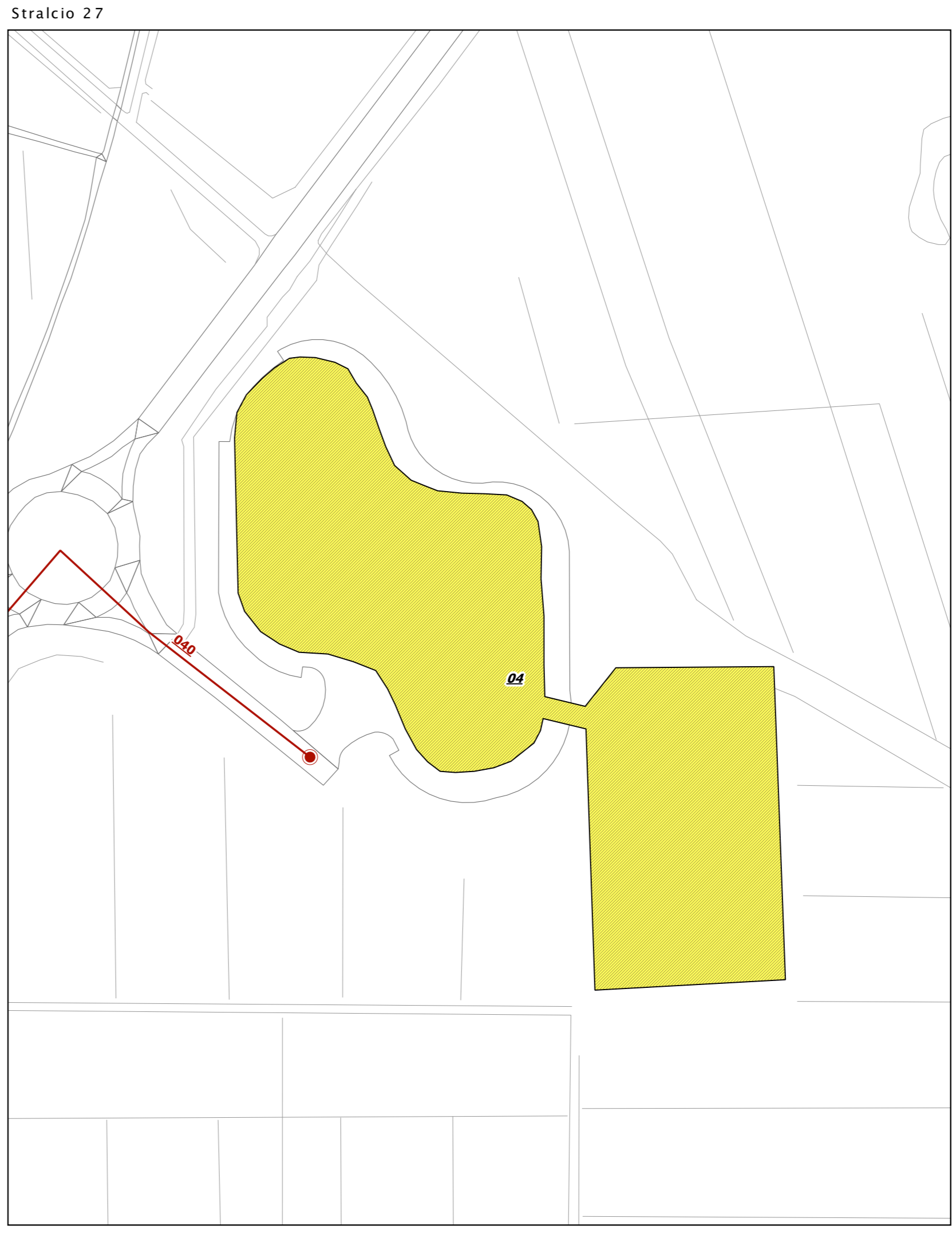
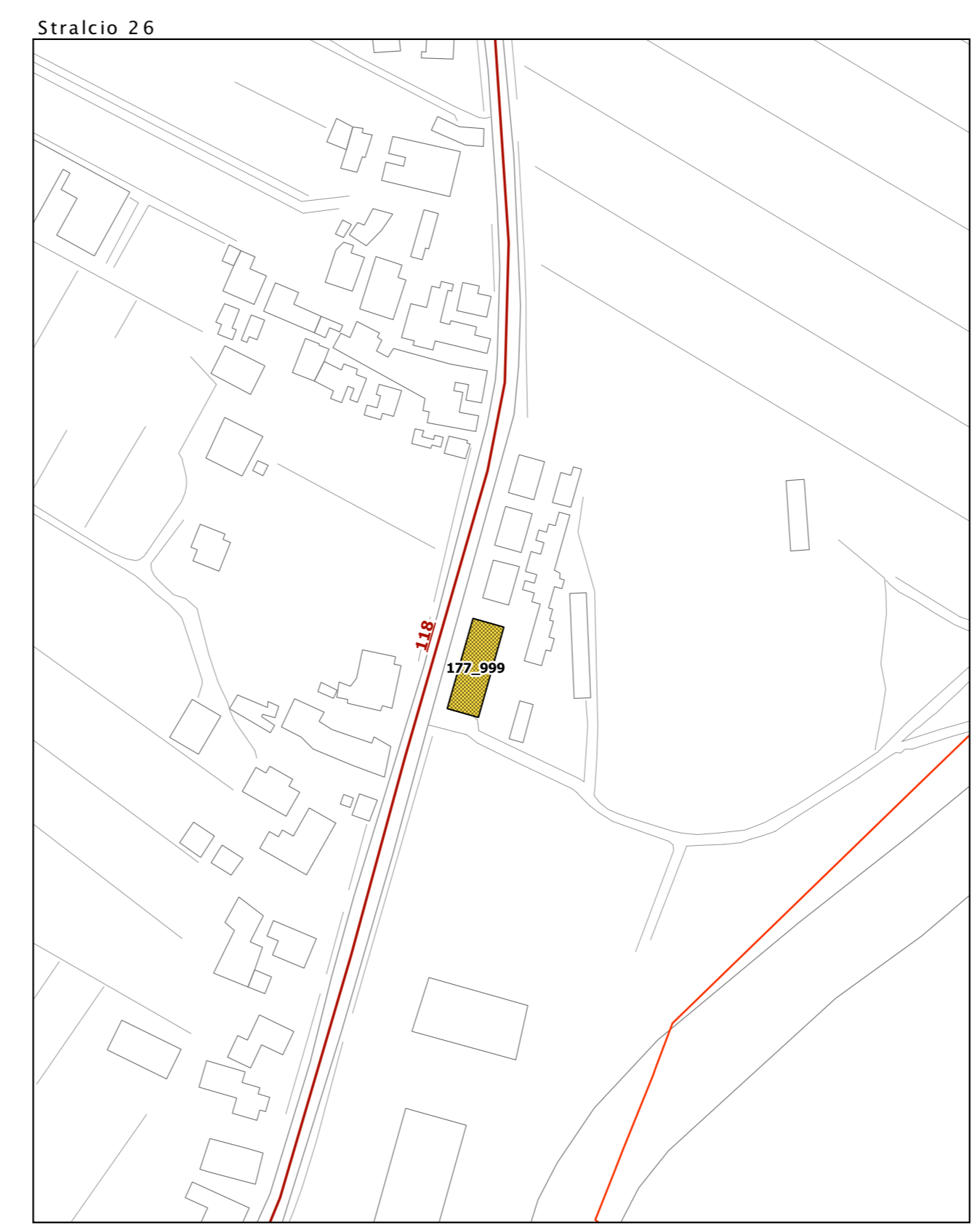
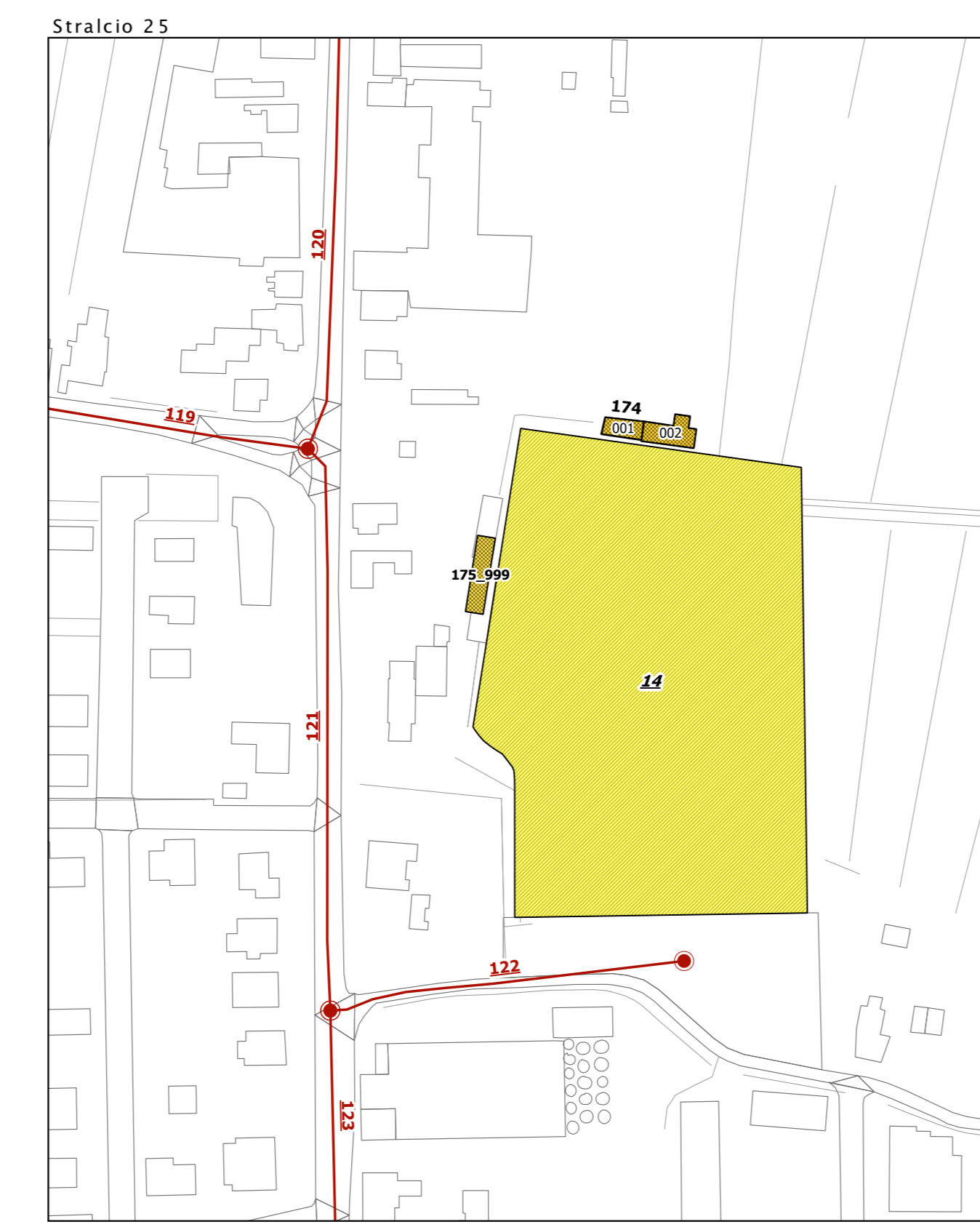
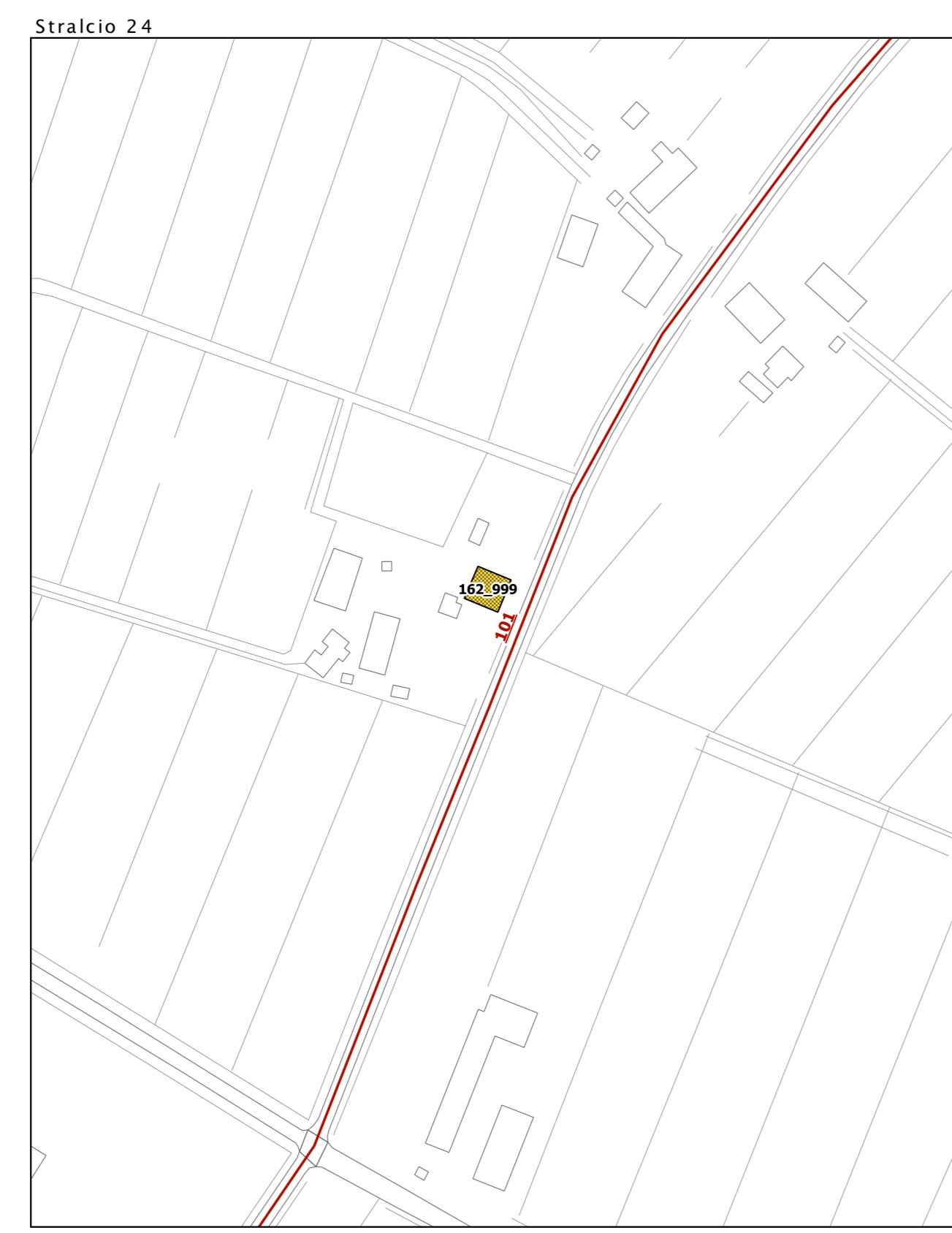
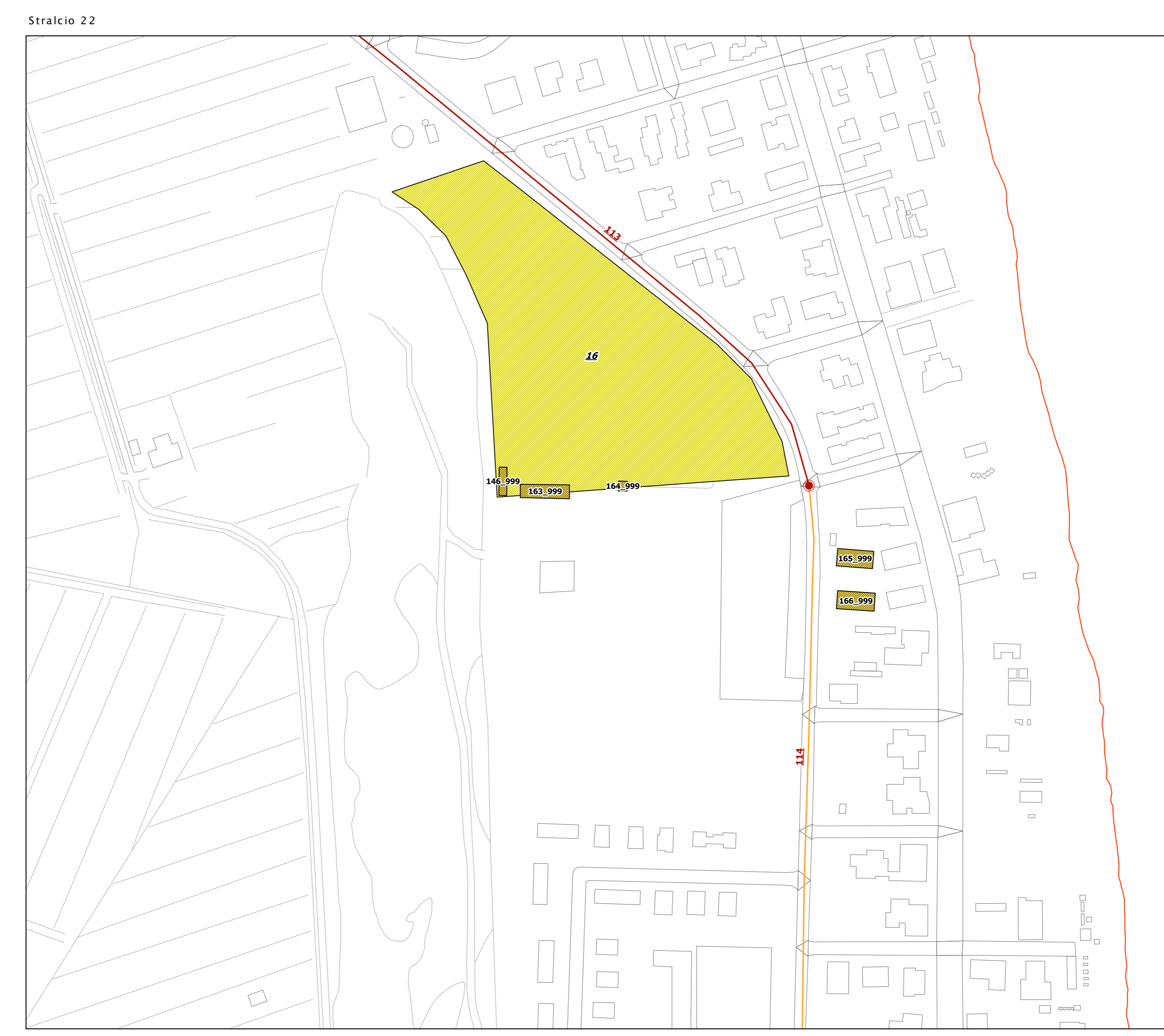
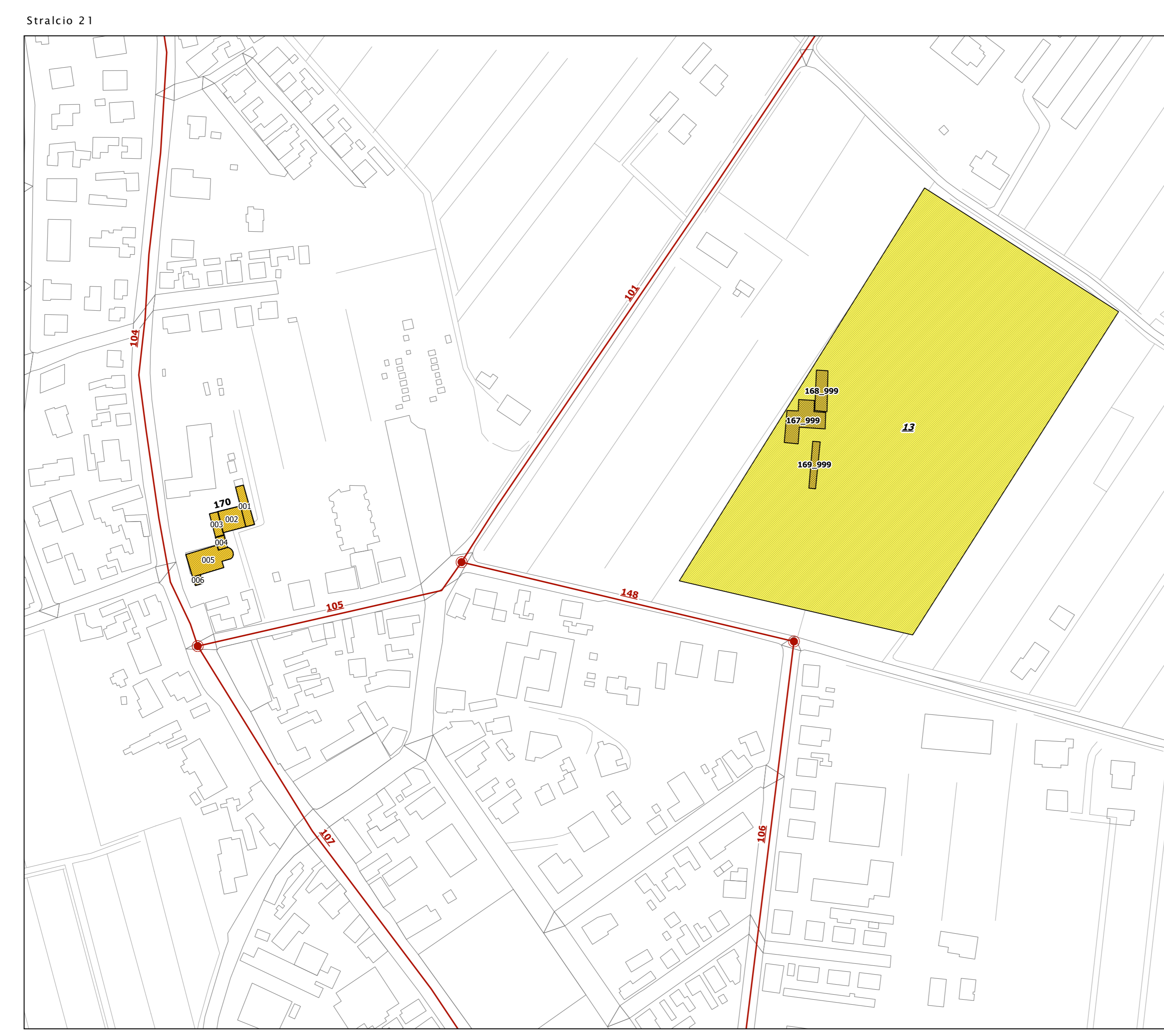
Scala 1:2.000

Regione Emilia Romagna

Comune di Ravenna



Servizio Sismico Regione Emilia Romagna	Soggetto realizzatore: Geologica Toscana Prospezioni Geofisiche Ing. Stefano Mugnaini Comune di Ravenna	Data: 28.12.2017
--	---	---------------------



**Legenda**

Codice Provincia: **039**  
Codice Comune: **014**

**Sistema di gestione dell'emergenza**

- Edificio strategico
- Area di ammassamento - ricovero
- Infrastruttura di connessione
- Infrastruttura di accessibilità
- Aggregato strutturale
- Unità strutturale interferente appartenente ad un AS
- Unità strutturale non interferente appartenente ad un AS
- Unità strutturale interferente isolata

