

MICROZONAZIONE SISMICA

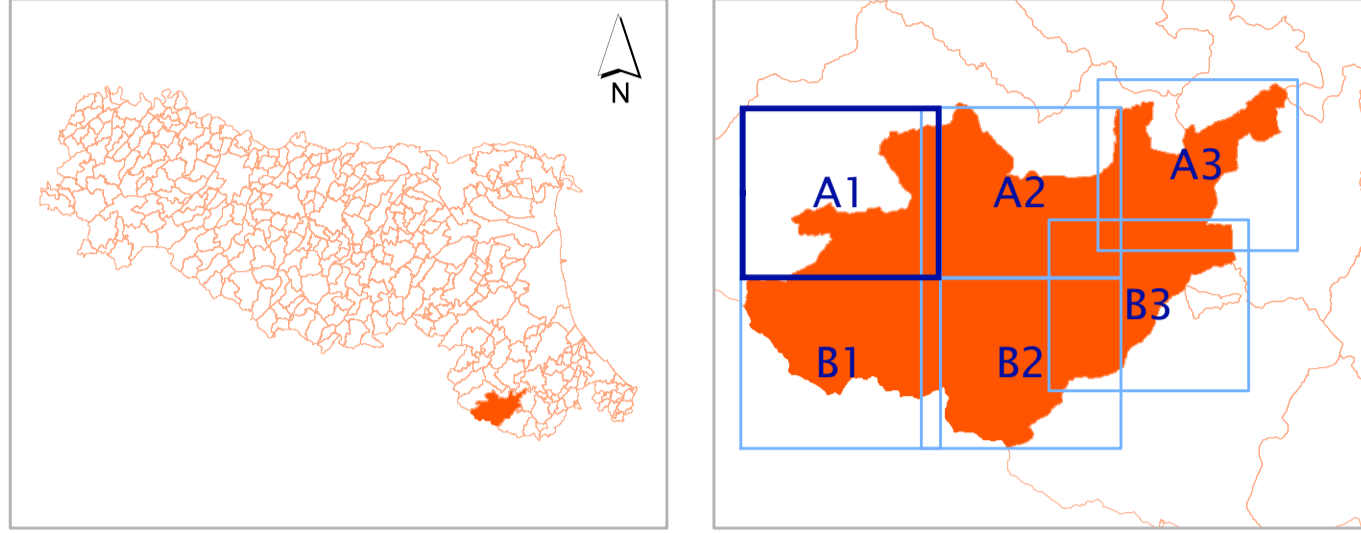
Carta delle frequenze

Tavola A1

scala 1 : 10.000







Regione Emilia Romagna

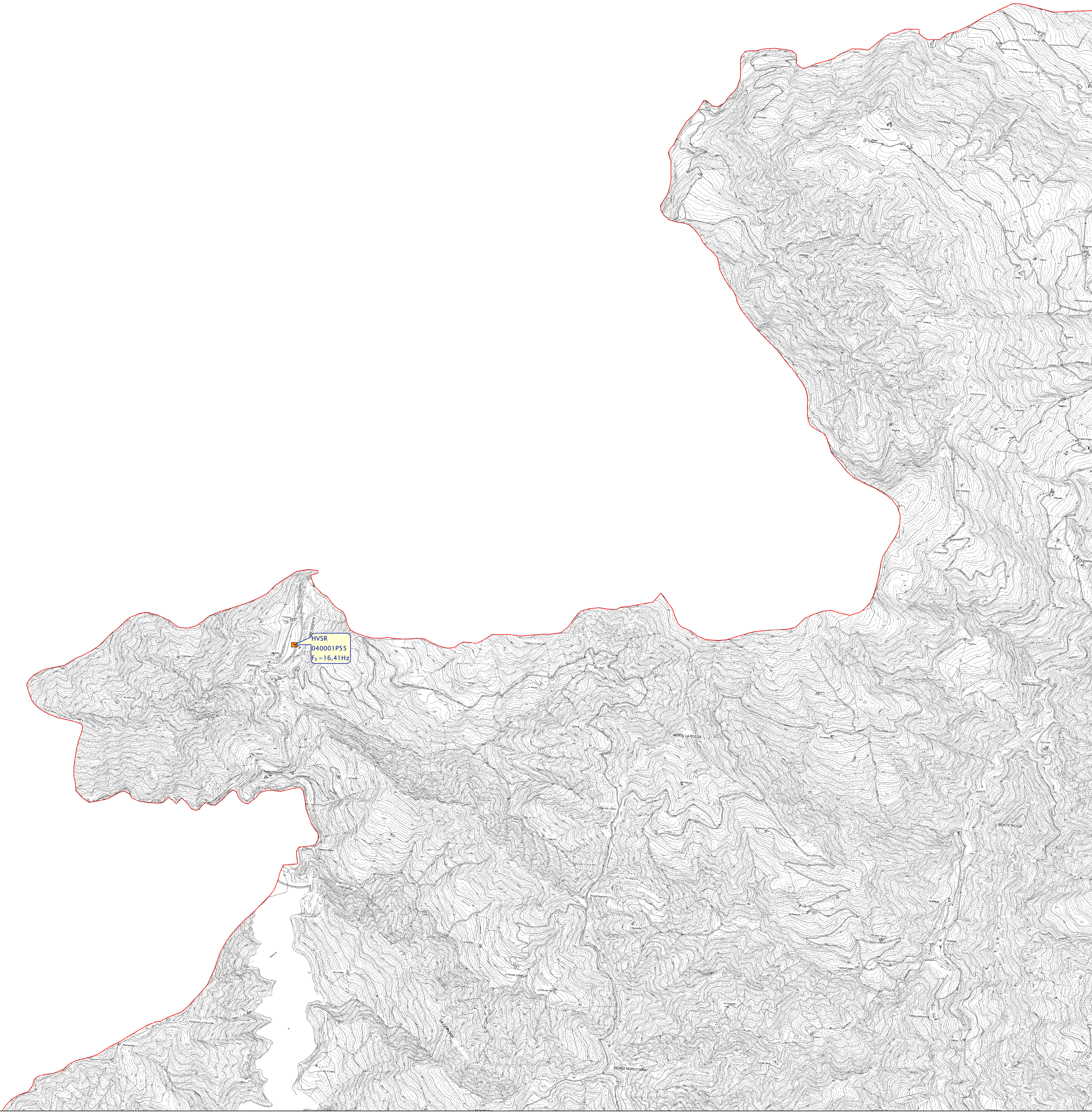
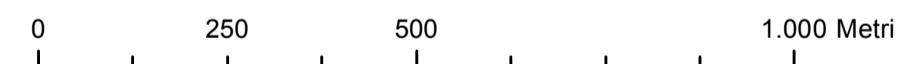
Comune di Bagno di Romagna



	Soggetto Realizzatore	Data
	Dott. Geol. Antonio Maria Baldi	Agosto 2013
		

Legenda

- Punti di misura HVSR**
- Ampiezza HVSR > 3**
-  1Hz <math>f_0 < 2\text{Hz}</math>
 -  2Hz <math>f_0 < 8\text{Hz}</math>
 -  $f_0 > 8\text{Hz}$
- Ampiezza HVSR < 3**
-  2Hz <math>f_0 < 8\text{Hz}</math>
 -  $f_0 > 8\text{Hz}$
 -  Assenza di picco di frequenza fondamentale

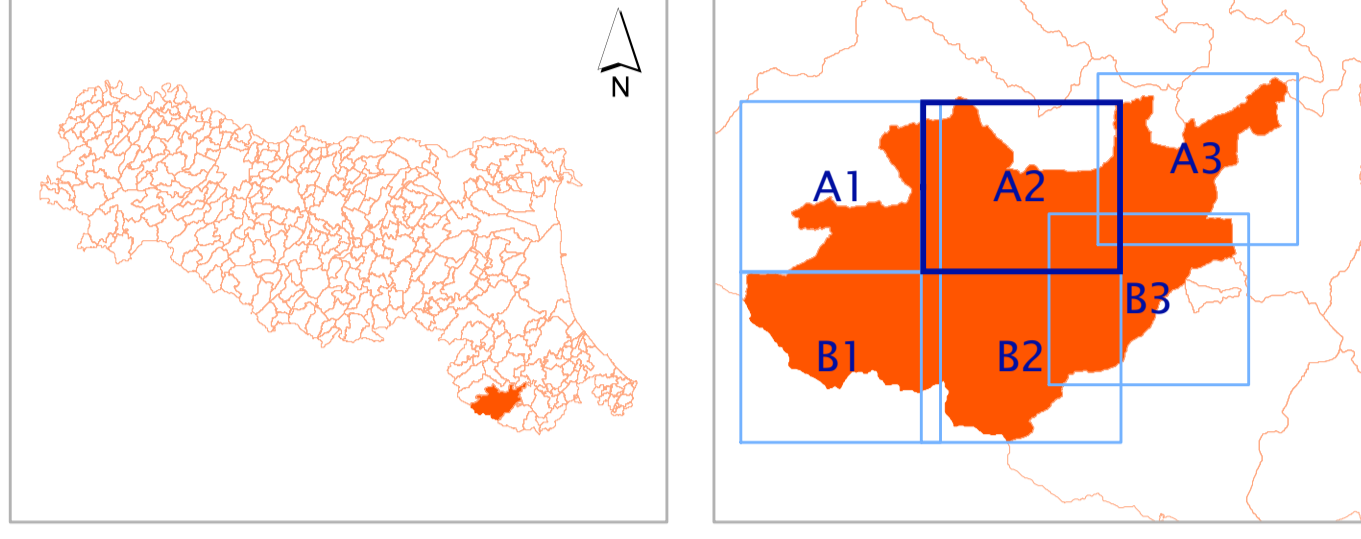


MICROZONAZIONE SISMICA

Carta delle frequenze

Tavola A2
scala 1 : 10.000

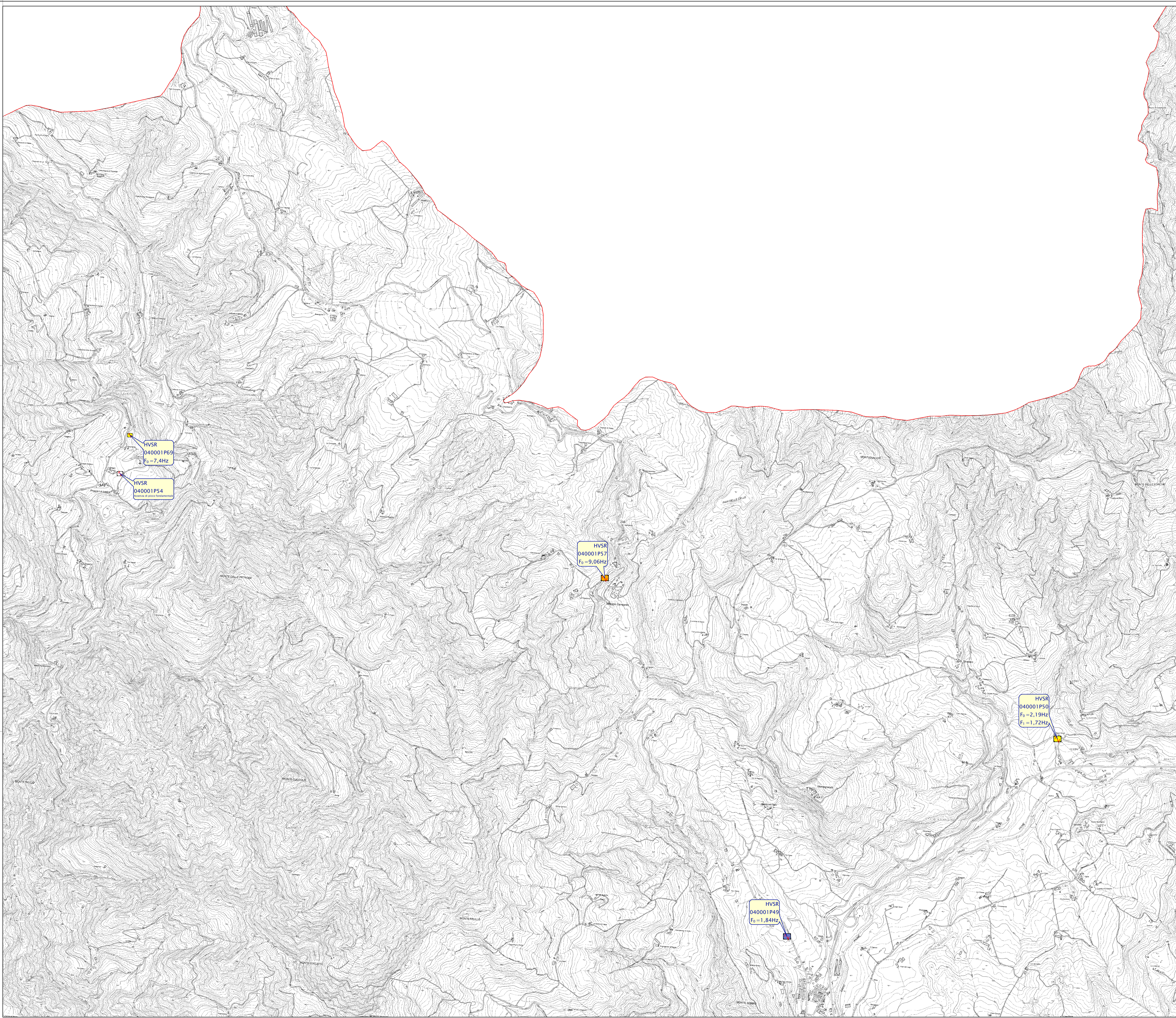
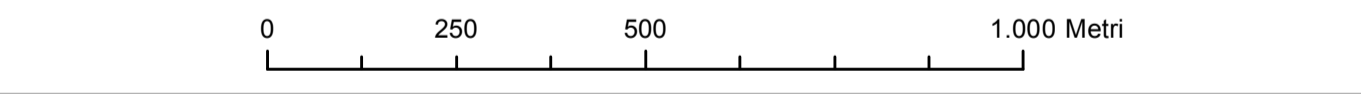
Regione Emilia Romagna
Comune di Bagno di Romagna



	Soggetto Realizzatore	Data
	Dott. Geol. Antonio Maria Baldi	Agosto 2013
		

Legenda

- Punti di misura HVSr**
- Ampiezza HVSr > 3**
- 1Hz <math>F_0 < 2\text{Hz}</math>
 - 2Hz <math>F_0 < 8\text{Hz}</math>
 - $F_0 > 8\text{Hz}$
- Ampiezza HVSr < 3**
- 2Hz <math>F_0 < 8\text{Hz}</math>
 - $F_0 > 8\text{Hz}$
 - Assenza di picco di frequenza fondamentale



MICROZONAZIONE SISMICA

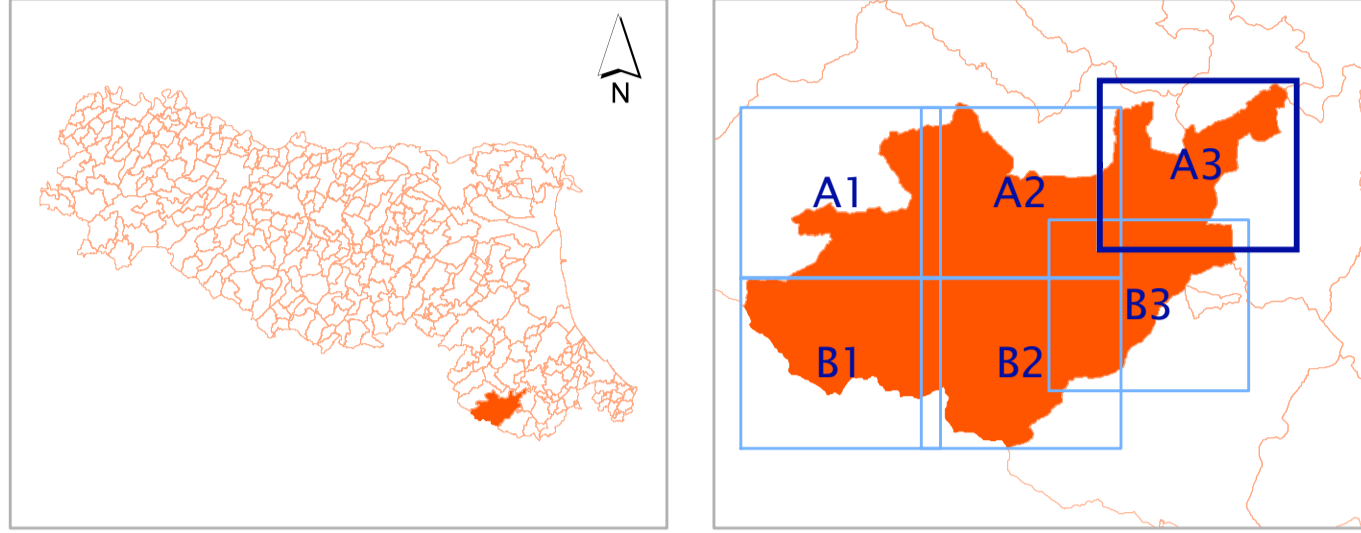
Carta delle frequenze

Tavola A3

scala 1 : 10.000







Regione Emilia Romagna

Comune di Bagno di Romagna



	Soggetto Realizzatore	Data
	Dott. Geol. Antonio Maria Baldi	Agosto 2013
		

Legenda

- Punti di misura HVSR**
- Ampiezza HVSR > 3**
-  1Hz <math>f_0 < 2\text{Hz}</math>
 -  2Hz <math>f_0 < 8\text{Hz}</math>
 -  $f_0 > 8\text{Hz}$
- Ampiezza HVSR < 3**
-  2Hz <math>f_0 < 8\text{Hz}</math>
 -  $f_0 > 8\text{Hz}$
 -  Assenza di picco di frequenza fondamentale

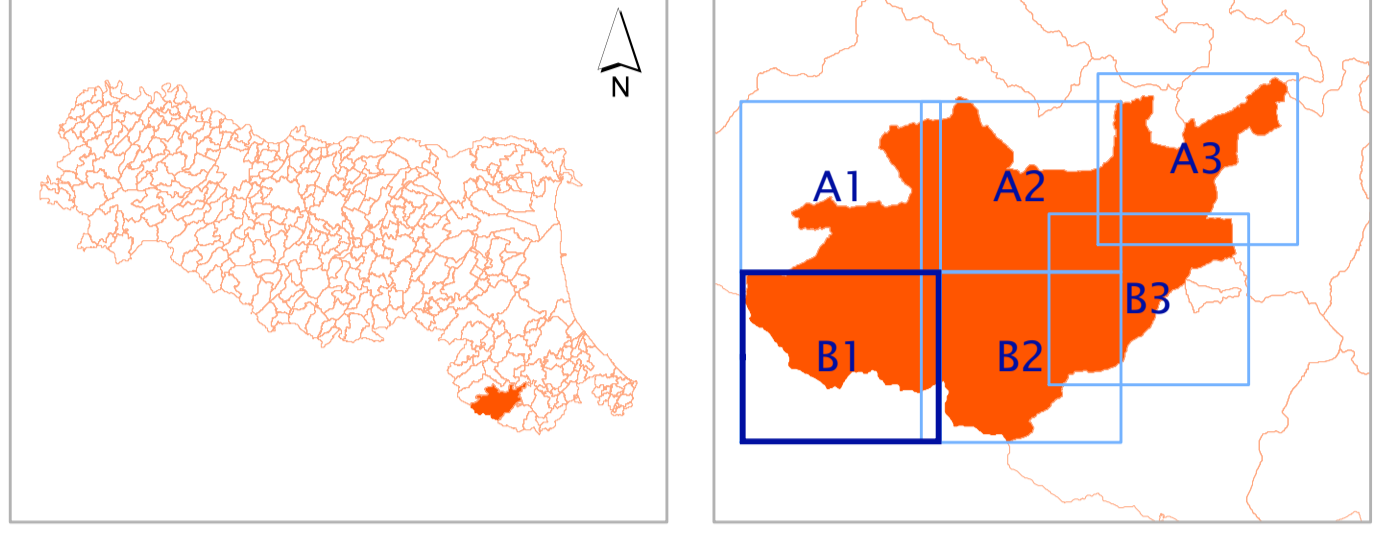


MICROZONAZIONE SISMICA

Carta delle frequenze







Tavola B1
scala 1 : 10.000

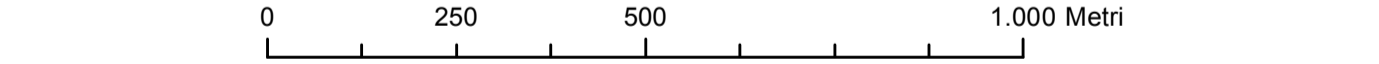
Regione Emilia Romagna
Comune di Bagno di Romagna



	Soggetto Realizzatore	Data
	Dott. Geol. Antonio Maria Baldi	Agosto 2013
		

Legenda

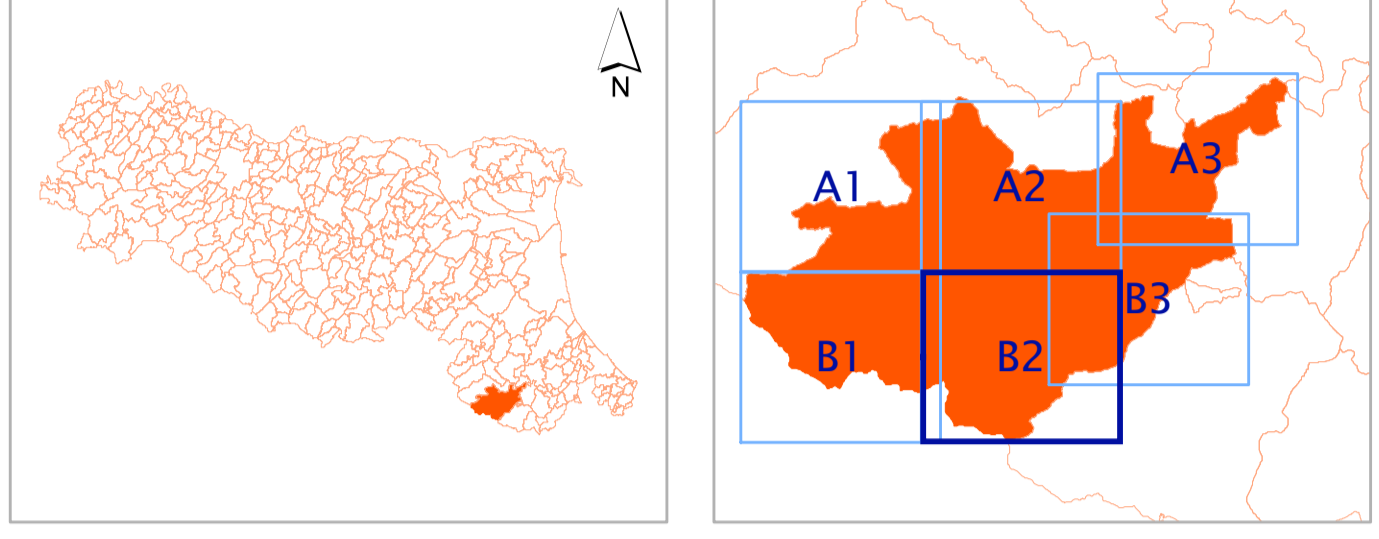
- Punti di misura HVSR**
- Ampiezza HVSR > 3**
-  1Hz <math>f_0 < 2f_0</math>
 -  2Hz <math>f_0 < 8f_0</math>
 -  $f_0 > 8f_0$
- Ampiezza HVSR < 3**
-  2Hz <math>f_0 < 8f_0</math>
 -  $f_0 > 8f_0$
 -  Assenza di picco di frequenza fondamentale



MICROZONAZIONE SISMICA


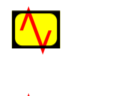


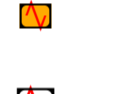
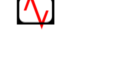
Carta delle frequenze

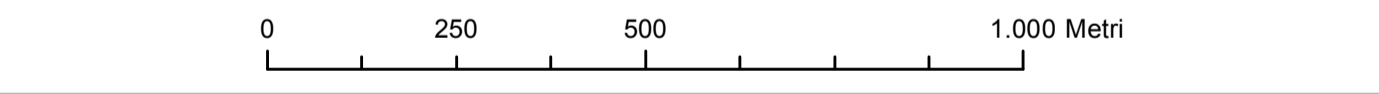
Tavola B2
 scala 1 : 10.000
 Regione Emilia Romagna
 Comune di Bagno di Romagna



	Soggetto Realizzatore Dott. Geol. Antonio Maria Baldi	Data Agosto 2013
		

Legenda

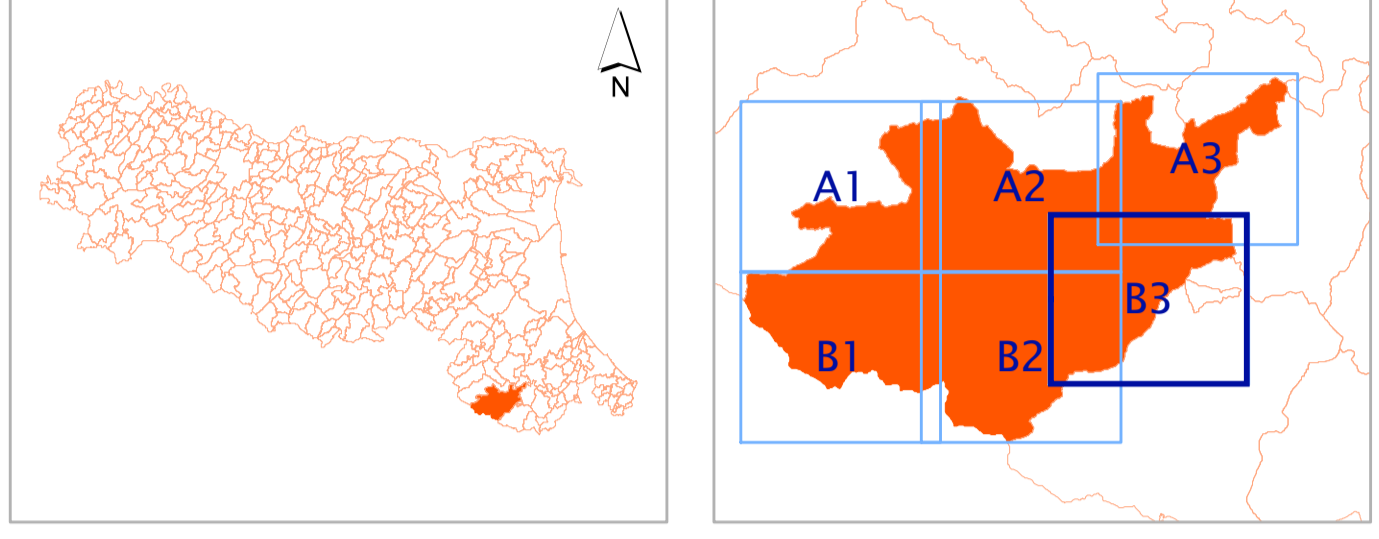
- Punti di misura HVSR**
- Ampiezza HVSR > 3**
-  1Hz <math>F_0 < 2\text{Hz}</math>
 -  2Hz <math>F_0 < 8\text{Hz}</math>
 -  $F_0 > 8\text{Hz}$
- Ampiezza HVSR < 3**
-  2Hz <math>F_0 < 8\text{Hz}</math>
 -  $F_0 > 8\text{Hz}$
 -  Assenza di picco di frequenza fondamentale



MICROZONAZIONE SISMICA


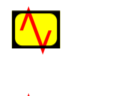



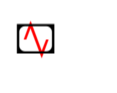
Carta delle frequenze

Tavola B3
 scala 1 : 10.000
 Regione Emilia Romagna
 Comune di Bagno di Romagna




 Soggetto Realizzatore
 Dott. Geol. Antonio Maria Baldi
 Data
 Agosto 2013

Legenda

- Punti di misura HVSR**
- Ampiezza HVSR > 3**
-  1Hz <math>f_0 < 2\text{Hz}</math>
 -  2Hz <math>f_0 < 8\text{Hz}</math>
 -  $f_0 > 8\text{Hz}$
- Ampiezza HVSR < 3**
-  2Hz <math>f_0 < 8\text{Hz}</math>
 -  $f_0 > 8\text{Hz}$
 -  Assenza di picco di frequenza fondamentale

