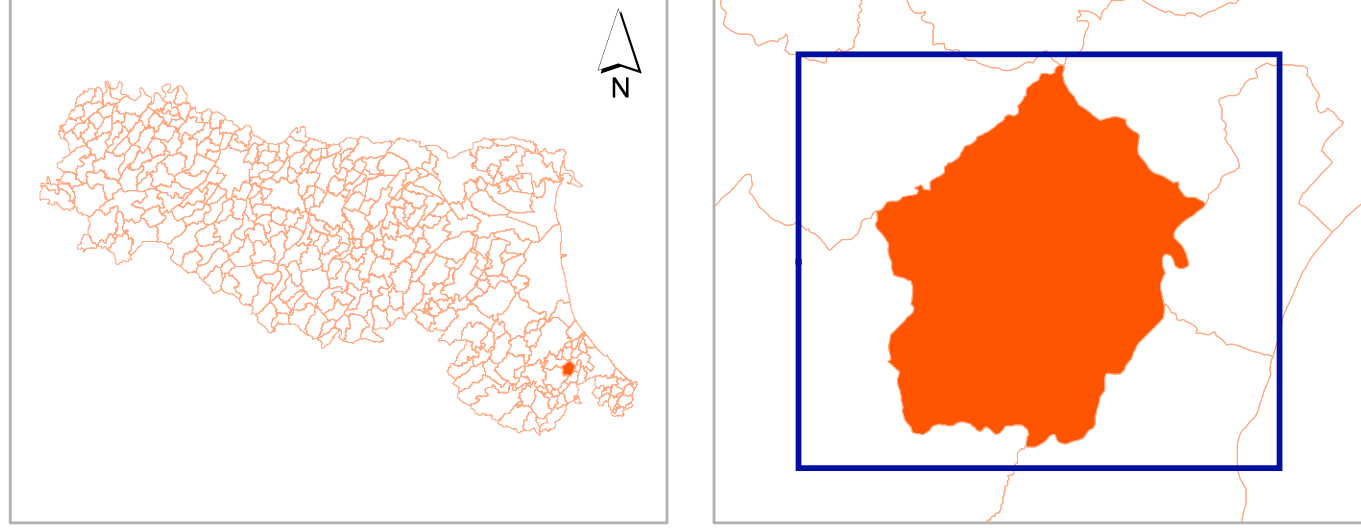


MICROZONAZIONE SISMICA

Carta delle frequenze







Tavola unica
scala 1 : 10.000

Regione Emilia Romagna
Comune di Borghi



	Soggetto Realizzatore	Data
	Dott. Geol. Antonio Maria Baldi	Agosto 2013

Legenda

- Punti di misura HVSR**
- Ampiezza HVSR > 3**
-  1Hz <math>F_0 < 2\text{Hz}</math>
 -  2Hz <math>F_0 < 8\text{Hz}</math>
 -  $F_0 > 8\text{Hz}$
- Ampiezza HVSR < 3**
-  2Hz <math>F_0 < 8\text{Hz}</math>
 -  $F_0 > 8\text{Hz}$
 -  Assenza di picco di frequenza fondamentale

