

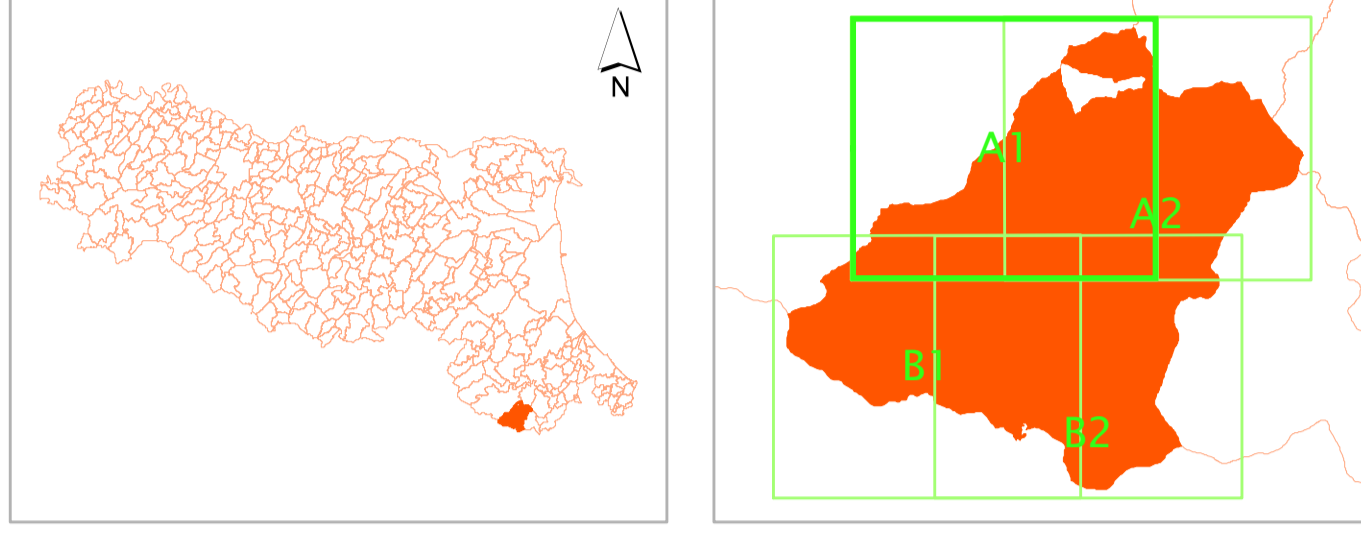
# Analisi della Condizione Limite per l'Emergenza (CLE)

Tavola A1

scala 1 : 10.000

Regione Emilia Romagna

Comune di Verghereto



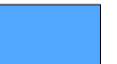

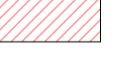






	Soggetto Realizzatore	Data
	Dott. Geol. Antonio Maria Baldi	Agosto 2013



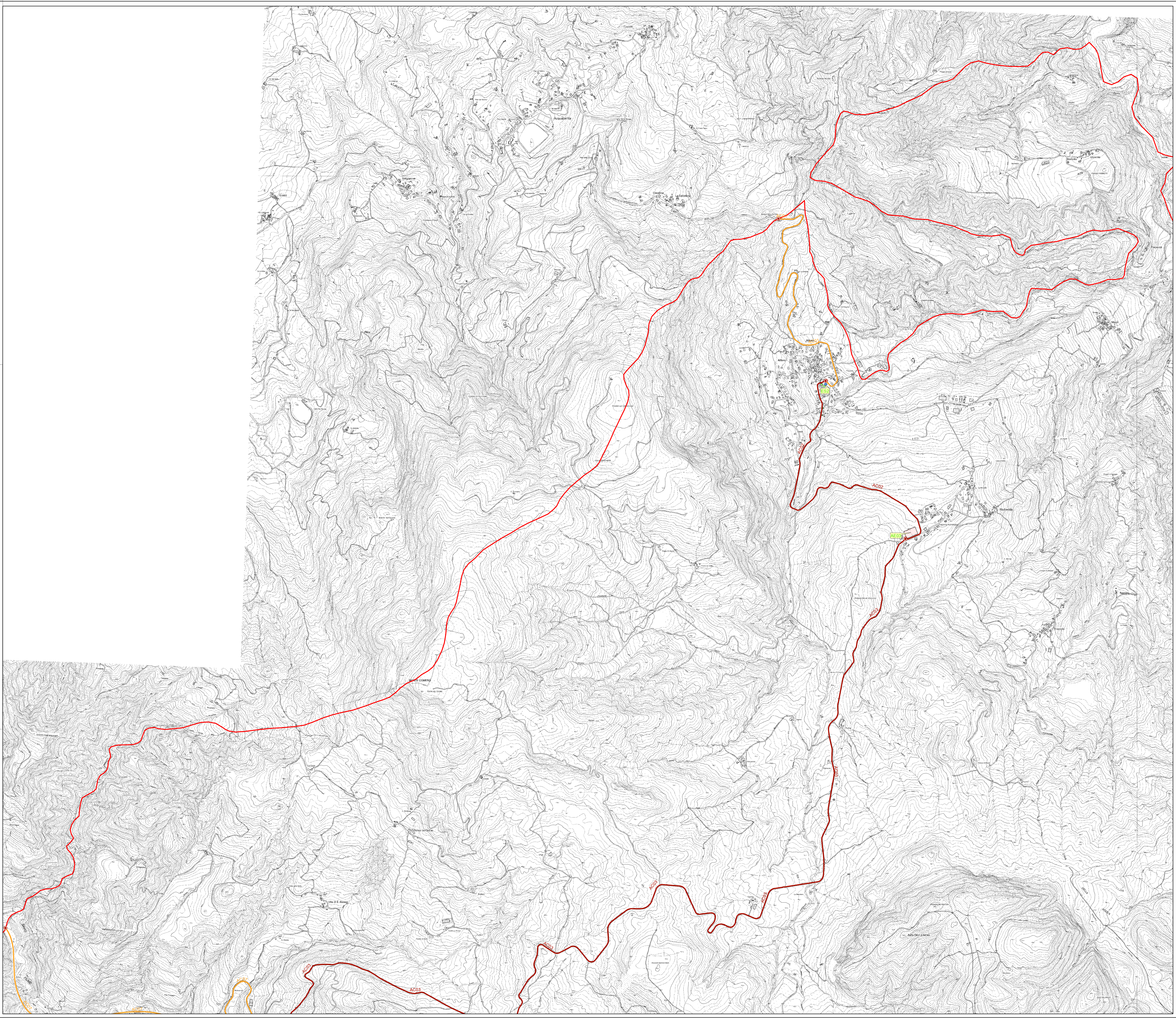
## Legenda

Codice Provincia: 40  
Codice Comune: 050

### Sistema di gestione dell'emergenza

-  Edificio Strategico
-  Aree di emergenza (AMMASSAMENTO)
-  Aree di emergenza (RICOVERO)
-  Infrastruttura di accessibilità
-  Infrastruttura di connessione
-  Unità strutturale isolata interferente su AC
-  Unità strutturale isolata interferente su ES o AE
-  Unità strutturale interferente appartenente ad un aggregato
-  Unità strutturale non interferente appartenente ad un aggregato

0 200 400 800 Metri



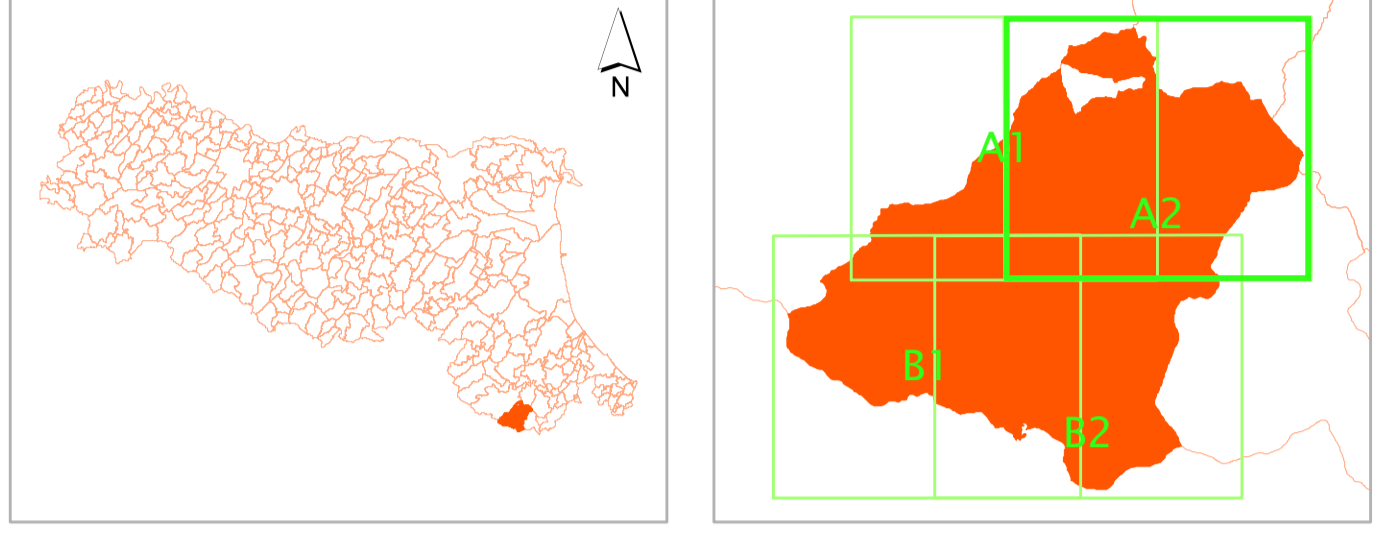
# Analisi della Condizione Limite per l'Emergenza (CLE)

Tavola A2

scala 1 : 10.000

Regione Emilia Romagna

Comune di Verghereto




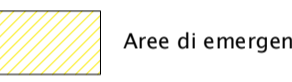
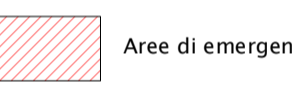


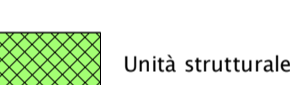
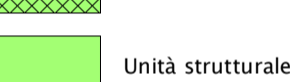
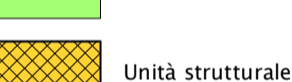
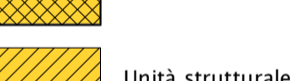
	Soggetto Realizzatore	Data
	Dott. Geol. Antonio Maria Baldi	Agosto 2013
		

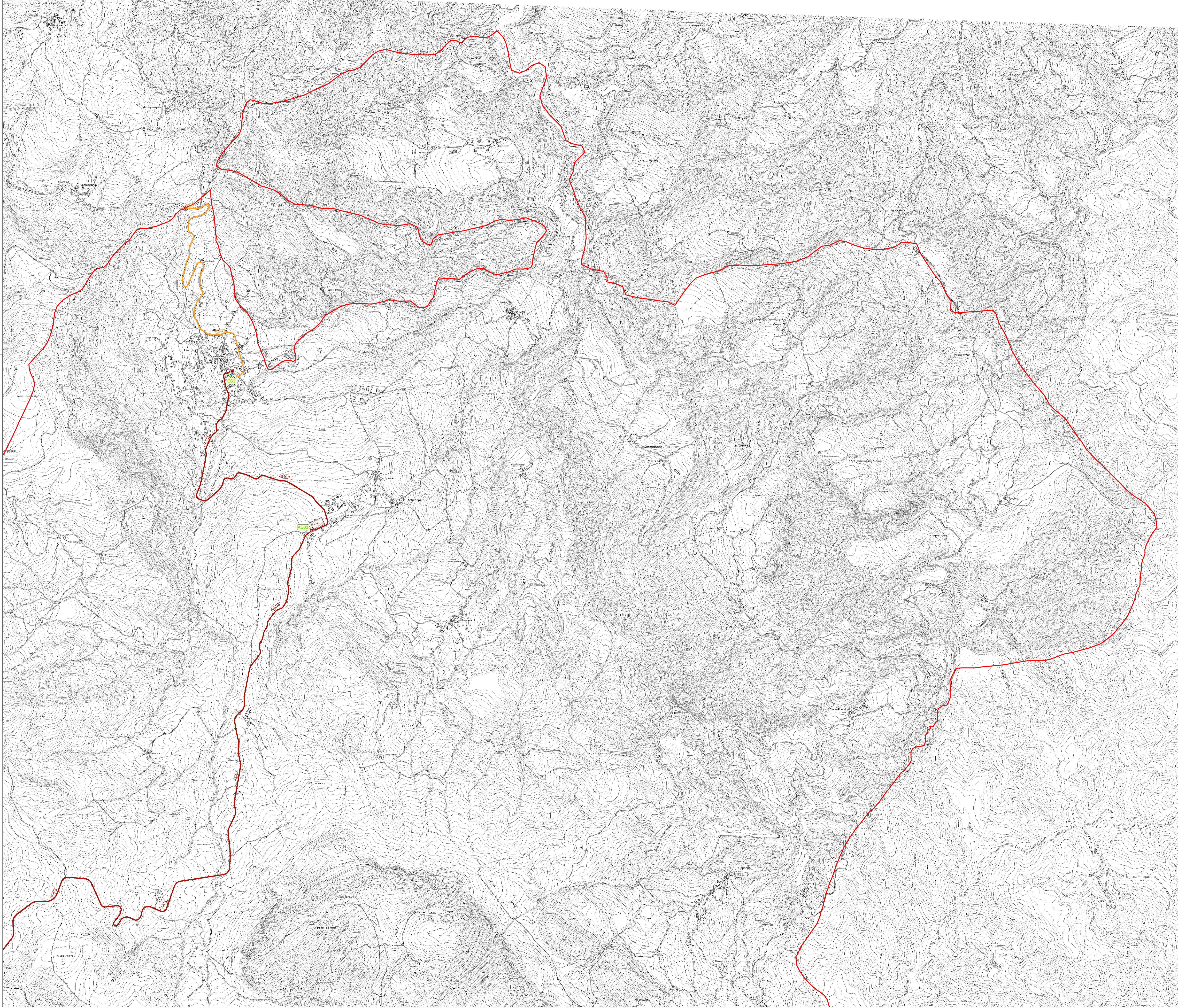
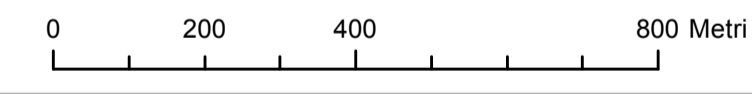
## Legenda

Codice Provincia: 40

Codice Comune: 050

## Sistema di gestione dell'emergenza

-  Edificio Strategico
-  Aree di emergenza (AMMASSAMENTO)
-  Aree di emergenza (RICOVERO)
-  Infrastruttura di accessibilità
-  Infrastruttura di connessione
-  Unità strutturale isolata interferente su AC
-  Unità strutturale isolata interferente su ES o AE
-  Unità strutturale interferente appartenente ad un aggregato
-  Unità strutturale non interferente appartenente ad un aggregato



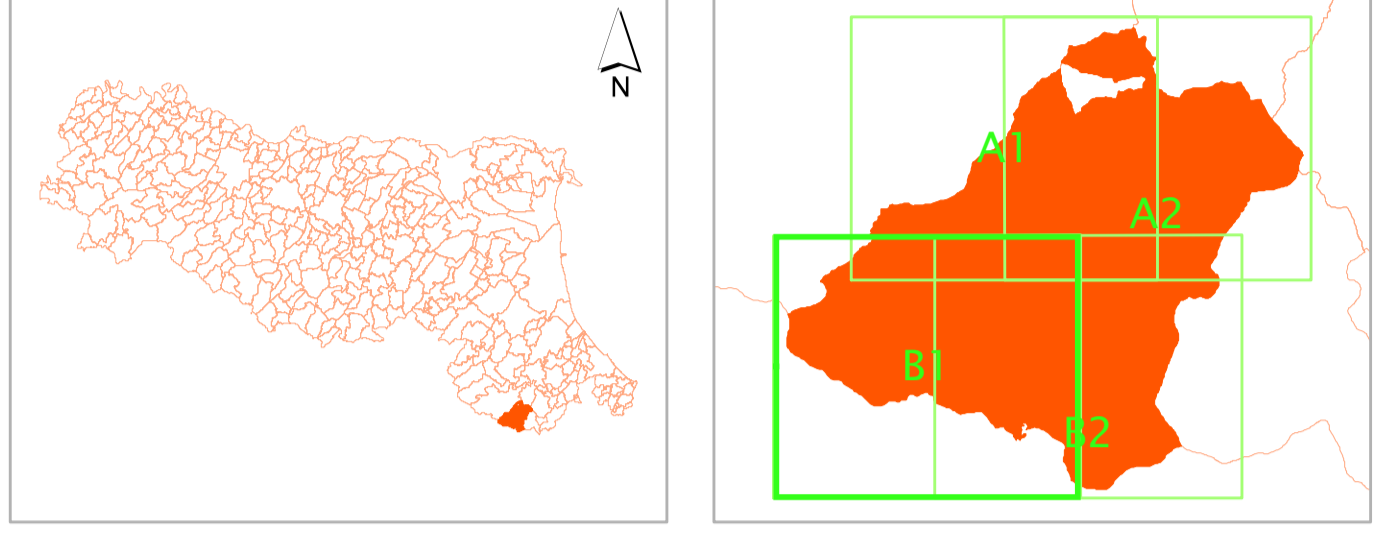
# Analisi della Condizione Limite per l'Emergenza (CLE)

Tavola B1

scala 1 : 10.000

Regione Emilia Romagna

Comune di Verghereto

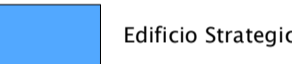
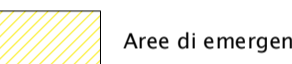
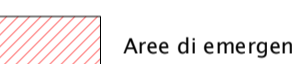


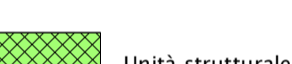





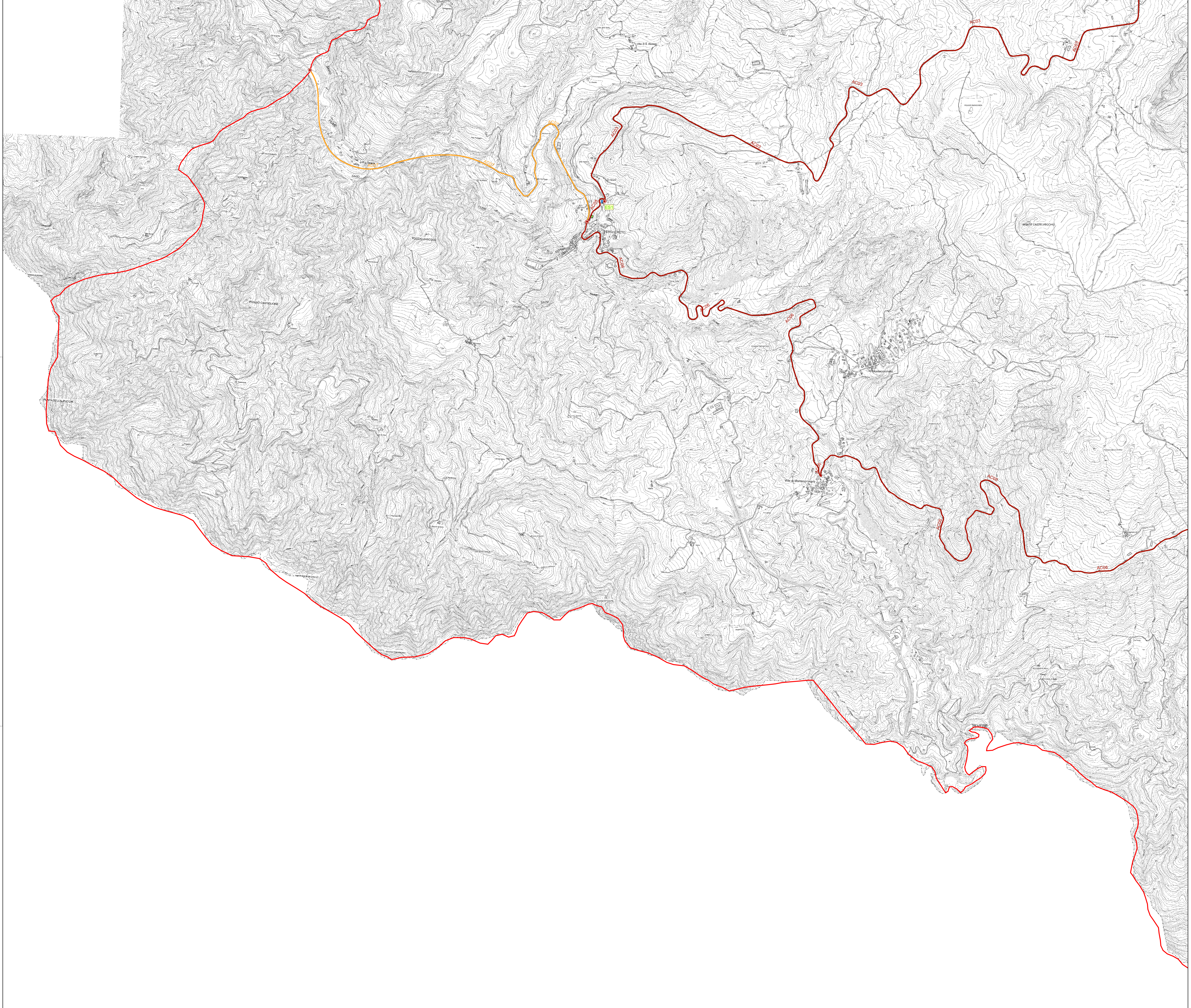
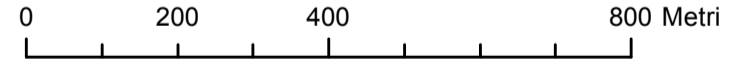
	Soggetto Realizzatore Dott. Geol. Antonio Maria Baldi	Data Agosto 2013
		

## Legenda

Codice Provincia: 40  
Codice Comune: 050

## Sistema di gestione dell'emergenza

-  Edificio Strategico
-  Aree di emergenza (AMMASSAMENTO)
-  Aree di emergenza (RICOVERO)
-  Infrastruttura di accessibilità
-  Infrastruttura di connessione
-  Unità strutturale isolata interferente su AC
-  Unità strutturale isolata interferente su ES o AE
-  Unità strutturale interferente appartenente ad un aggregato
-  Unità strutturale non interferente appartenente ad un aggregato



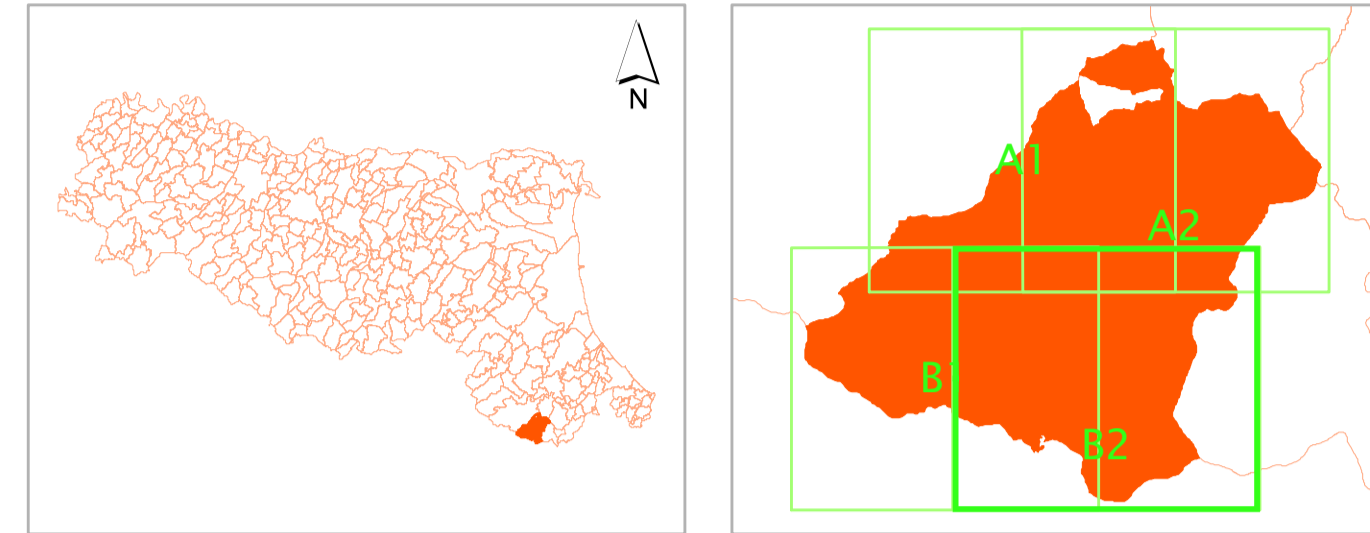
# Analisi della Condizione Limite per l'Emergenza (CLE)

Tavola B2

scala 1 : 10.000

Regione Emilia Romagna

Comune di Verghereto



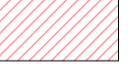








	Soggetto Realizzatore Dott. Geol. Antonio Maria Baldi	Data Agosto 2013
		

## Legenda

Codice Provincia: 40  
Codice Comune: 050

### Sistema di gestione dell'emergenza

-  Edificio Strategico
-  Aree di emergenza (AMMASSAMENTO)
-  Aree di emergenza (RICOVERO)
-  Infrastruttura di accessibilità
-  Infrastruttura di connessione
-  Unità strutturale isolata interferente su AC
-  Unità strutturale isolata interferente su ES o AE
-  Unità strutturale interferente appartenente ad un aggregato
-  Unità strutturale non interferente appartenente ad un aggregato

