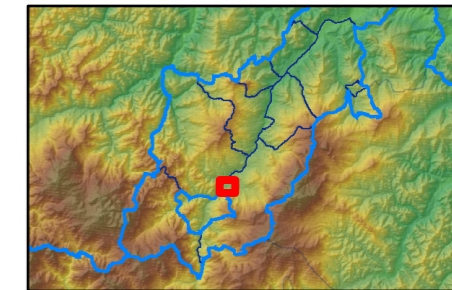
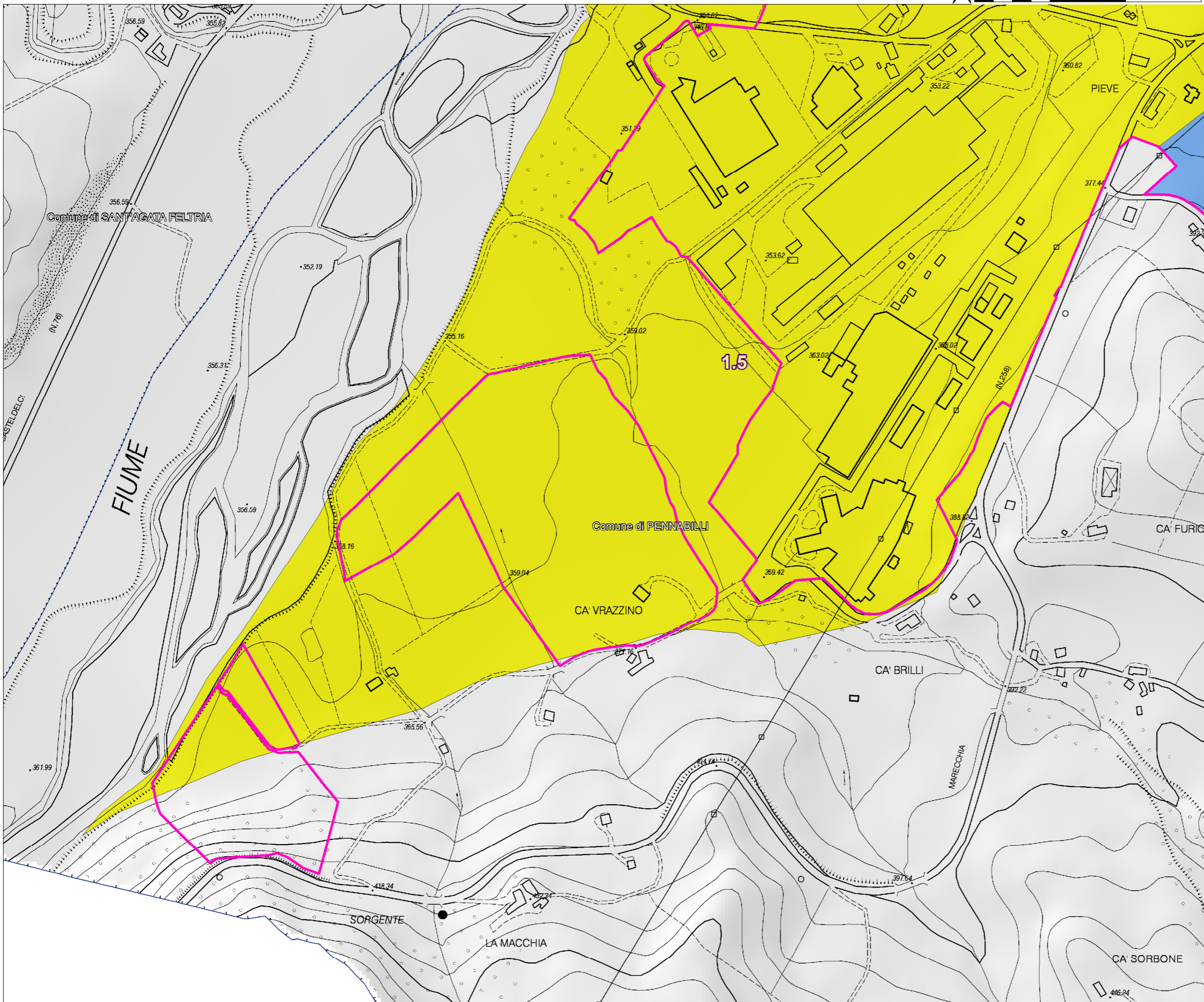


PENNABILLI  
ca' vrazzano



perimetri\_urbani\_expansioni



Profili topografici

- a
- b
- c

limiti FA 0.5 - 1.0

- certo
- incerto

valori di amplificazione topografica medi

- 1.1
- 1.15
- 1.2
- 1.3
- 1.4

FA 0.5 - 1.0

- 1
- 1.2
- 1.5
- 1.8
- 2.1
- 2.3